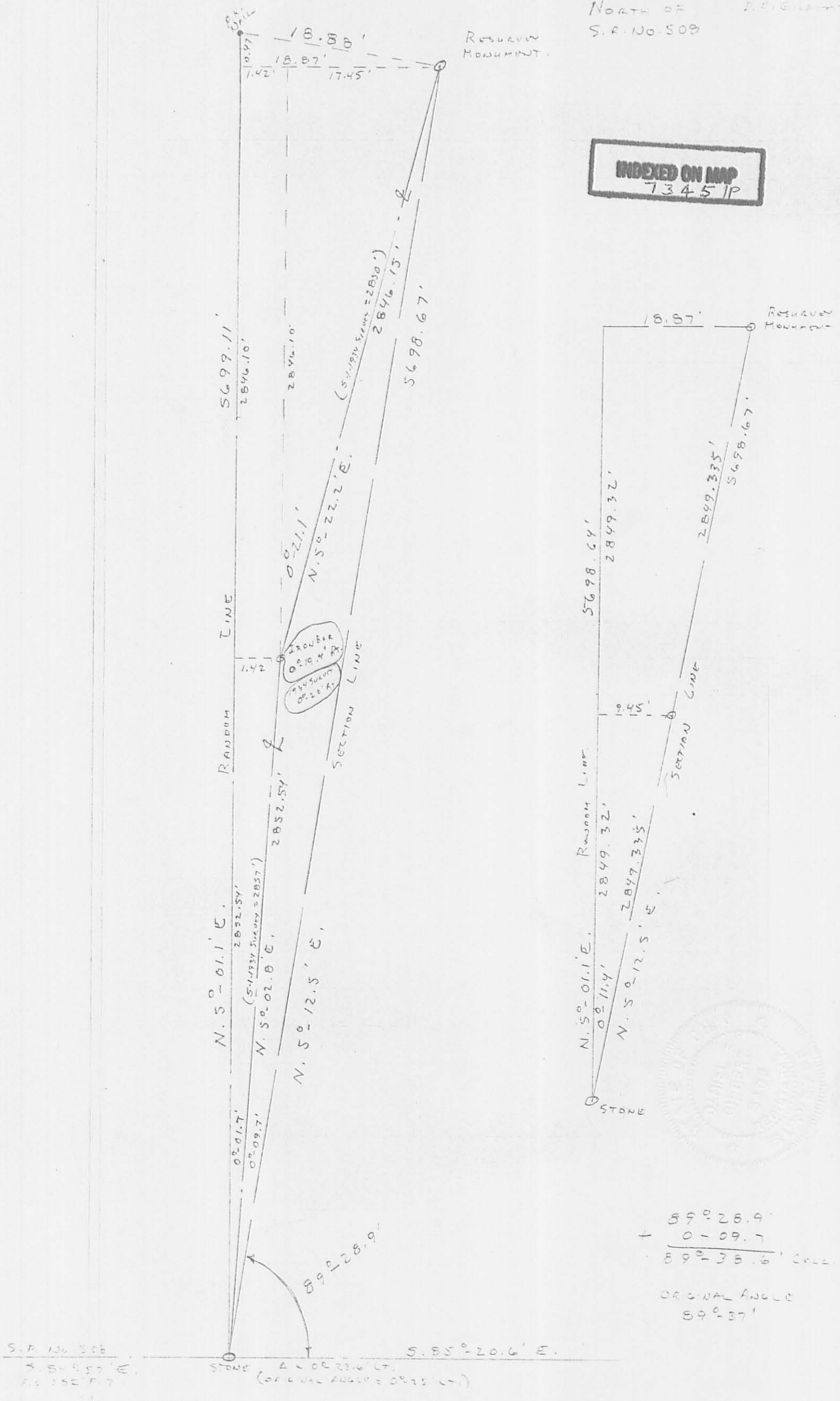


T.R. 33
 NORTH OF
 S.R. NO. 508

MARCH 7, 1985
 D. B. GILBERT

INDEXED ON MAP
 73451P



S.R. No. 508
 S. 54 2.55' E.
 2832.54'

S. 85°-20.6' E.
 2832.54' LT.
 (ORIGINAL ANGLE = 0°25' LT.)

$89^{\circ} 28.9'$
 $+ 0 - 09.7'$
 $89^{\circ} 38.6'$ COR.
 ORIGINAL ANGLE
 $89^{\circ} 37'$

