

Eoad No. 23 Miami, Pleasant, & Bloomfield Twp

25+00 P.O.T. Set RR Spike, 3' from edge.

FB 708

21+26.55 Fd. stone w. brick 1.5' deep, set hub on stone.  
No Angle

20+00 P.O.T. RR Spike set.

15+00 P.O.T. Set RR Spike, 1' from West edge.

10+00 P.O.T. hhd. hub, off West edge pavement.

8+49.48 P.O.T. Set hhd. hub, on West edge pavement  
military crest of ridge.

5+00 P.O.T. Set hhd. hub, on West edge pavement.

0+00 Fd. stone 1' deep, See F.B. 589, pg. 59  
set hub on stone.

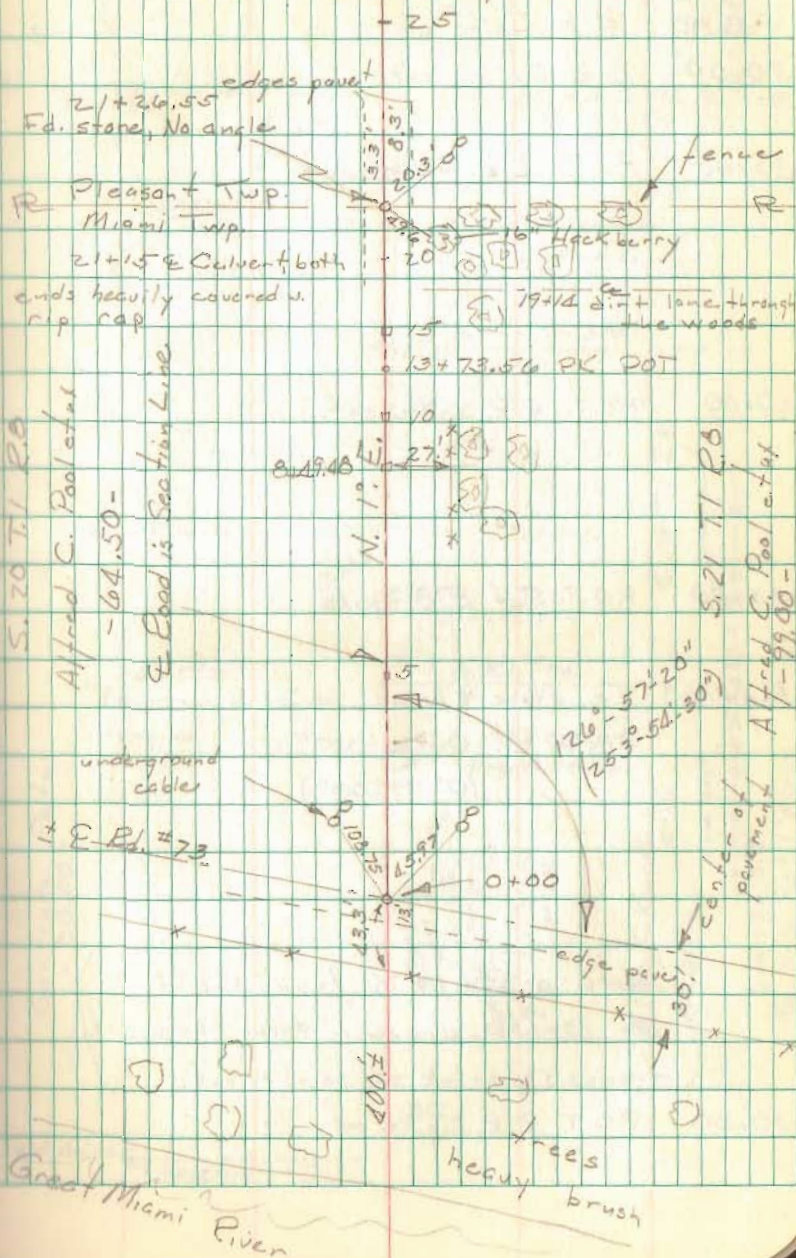
6672

INDEXED ON MAP

Nichols  
Brooks Prall  
Henry X

18 August 1970  
85° Sunny  
Gurley

10



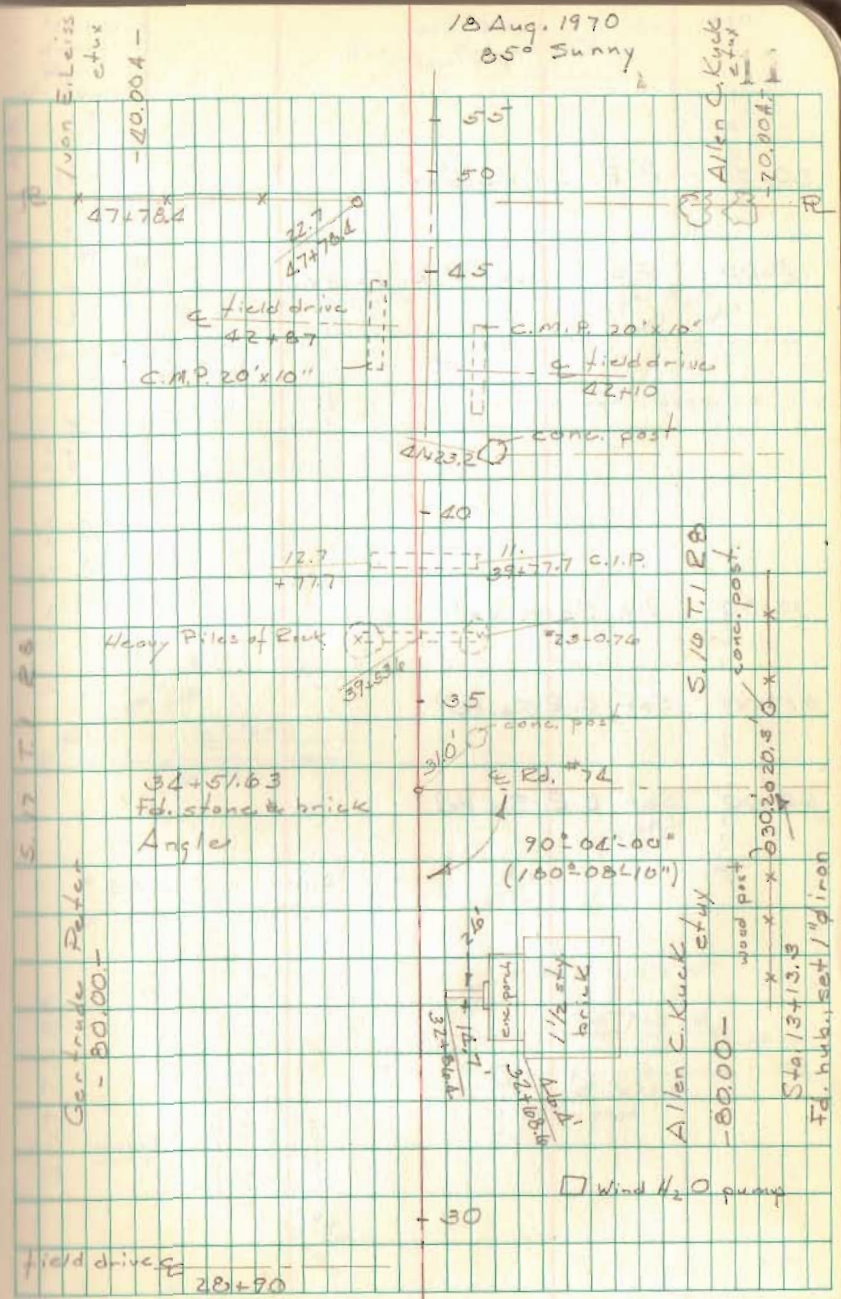
FB 708

Ed. No. 218 Pleasant Twp. cont.

- 55+00 R.R. Spike set
- 50+00 R.R. Spike set
- 45+00 P.O.T. R.R. Spike set
- 40+00 P.O.T. R.R. Spike set.
- 35+00 P.O.T. Set R.R. Spike
- 34+51.63 Fd. stone & brick  
Angle Pt.  $0^{\circ}04'30''$   
 $(0^{\circ}09'00'')$
- 30+00 P.O.T. R.R. Spike set

(Note: on Rd. No. 74 found hub of sta. 13+13.3, drove 1" pipe through it, traces of brick at point of hub.)

18 Aug. 1970  
85° Sunny



S. 7 T. 1 R. 8

Gertrude Peter  
- 80.00 -

Heavy Piles of Rock  
32+51.63  
Fd. stone & brick  
Angles

12.7  
+ 17.7  
39+53.6  
90° 04' 00"  
(160° 08' 10")  
Rd. # 74  
conc. post  
conc. post  
conc. post

S. 10 T. 1 R. 8  
Allen C. Kuck et ux  
- 80.00 -  
Sta. 13+13.3  
Fd. hub, set 1" pipe  
wood post  
x x x 302020.5  
x x x 302020.5  
x x x 302020.5

Wind H<sub>2</sub>O pump

field drive  
28+90

FB 708

Ed. No. 23 cont.

80+00 R.R. Spike set.

75+00 P.O.T. set R.R. Spike

70+00 R.R. Spike set.

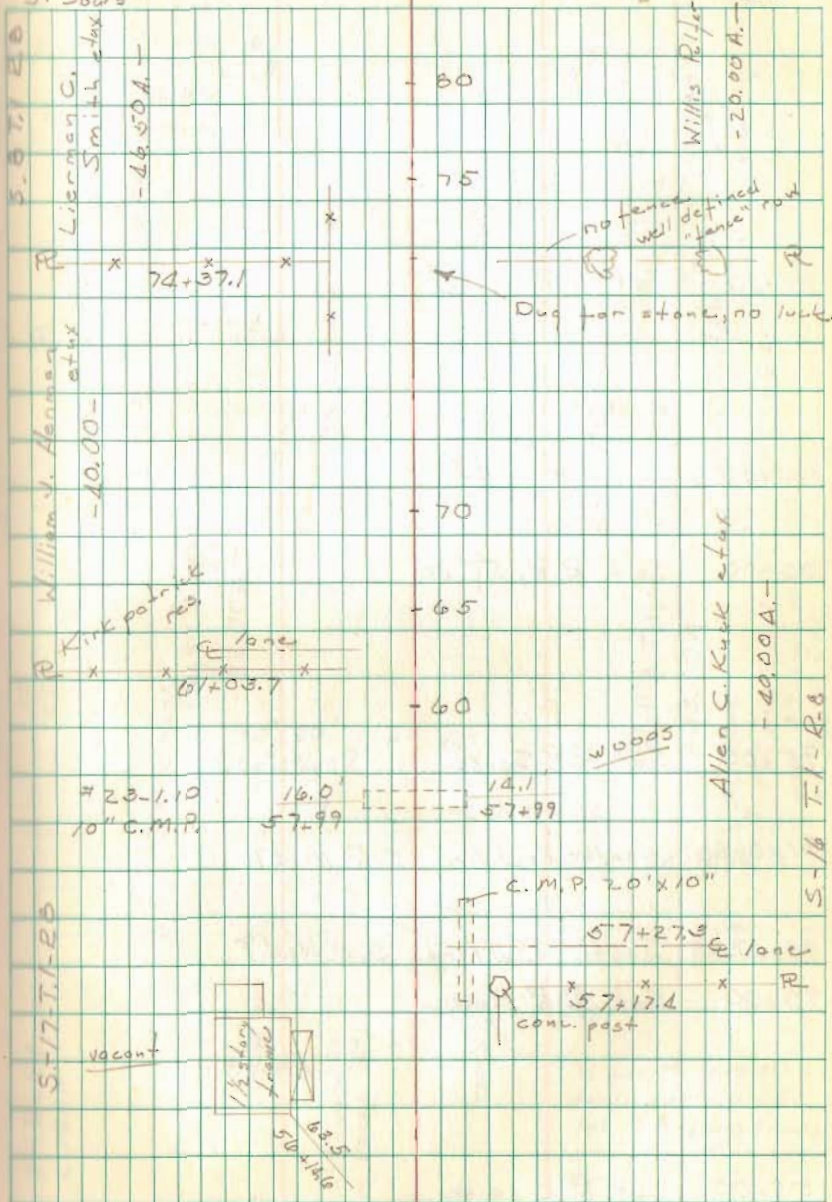
65+00 Set R.R. Spike

60+00 Set R.R. Spike

Nichols  
Henry X  
Droll  
J. Sours

Sta. 6500 - 19 Aug. 1970  
Gurley

12



Rd. No. 23 cont.

FB 708

110+00 Set R.R. Spike

105+00 Set R.R. Spike

100+00 Set R.R. Spike

95+00 Set R.R. Spike

91+06.98 North R/W line S.R. No. 47

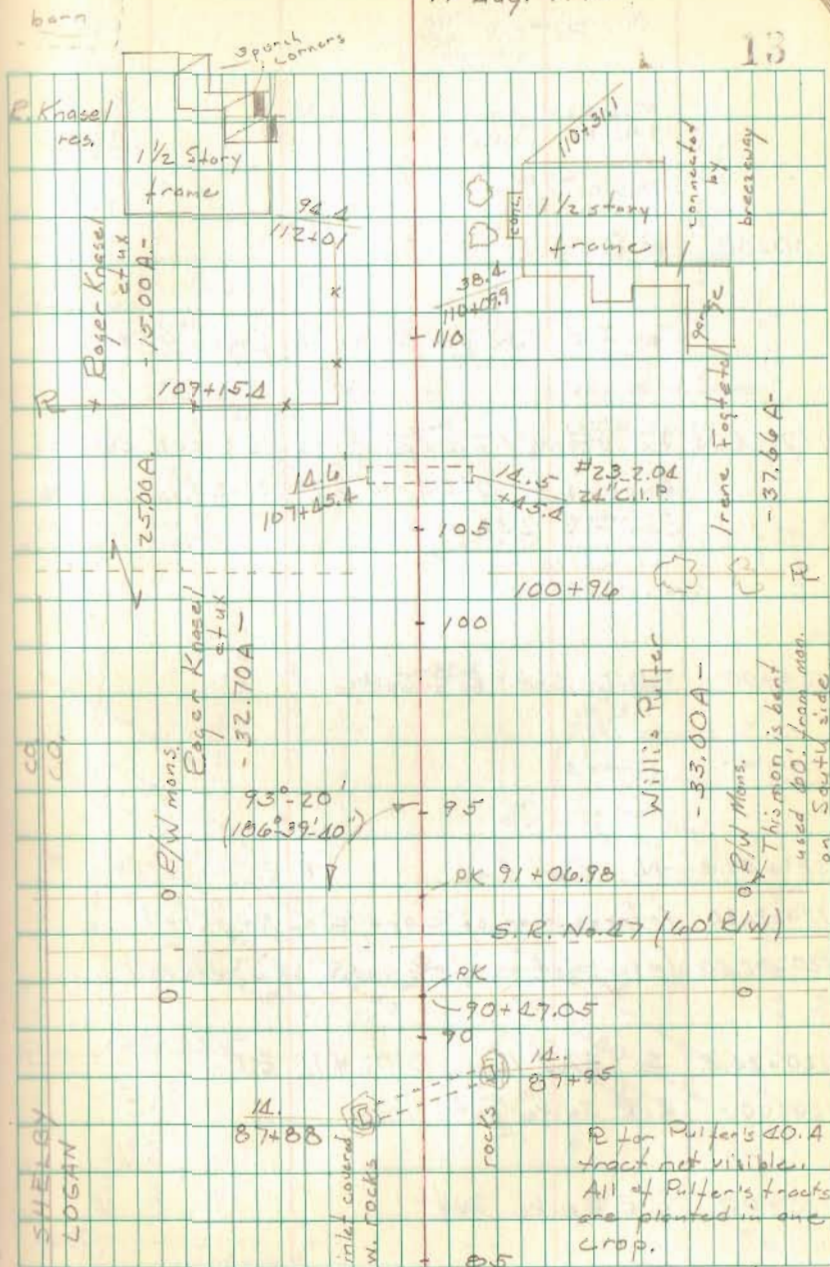
90+47.05 South R/W line S.R. No. 47

90+00 Set R.R. Spike

85+00 Set R.R. Spike

19 Aug. 1970

13



FB 708

Rd. #23 cont.

130+00 R.R. Spike set

(See F.B. 552 for Ed. No. 76, pages 65 & 66)

127+44.04 Fd. stone 1.2' deep, stone is green colored  
 Angle Lt.  $0^{\circ}04'10''/0^{\circ}08'20''$   
 See F.B. 552 pg. 65

125+00 P.O.T. Set R.R. Spike

121+51.4 N. R/W line R.R.

120+91.80 Intersection of E and E of North rail

120+82.50 Intersection of E and E of South rail

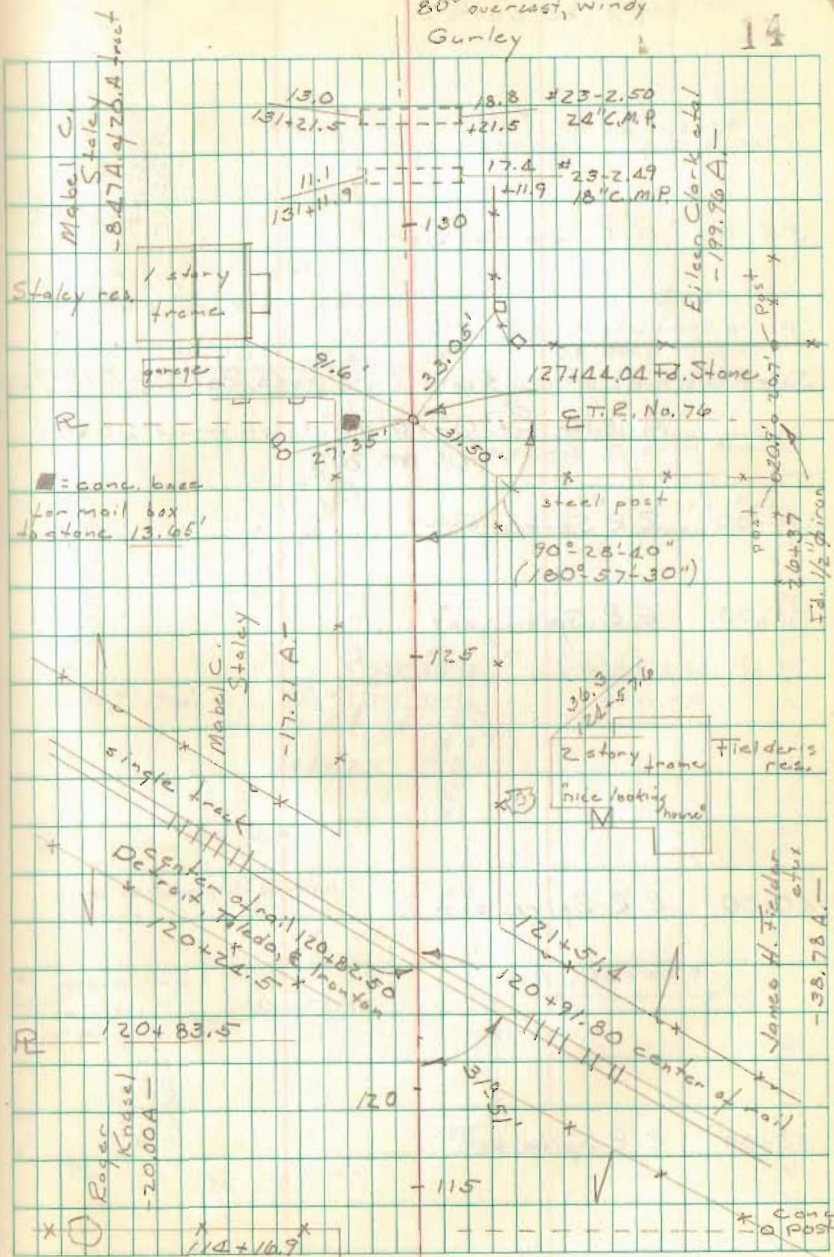
120+24.5 S. R/W line D.T. #1. R.R.

120+00 R.R. Spike set

115+00 R.R. Spike set

19 Aug. 1970  
 80° overcast, windy  
 Gunley

14





FB 708

Rd. No. 23 Pleasant Twp.

195+00 Set R.R. Spike

190+00 Set R.R. Spike

185+00 Set R.R. Spike

Note: (T. R. No. 78 survey in F.B. 575 pg. 72)

180+49.73 Fd. stone w. brick .5' deep.

Angle Lt.  $0^{\circ}15'20''$  ( $0^{\circ}30'40''$ )

180+00 Set R.R. Spike

175+00 Set R.R. Spike

170+00 Set R.R. Spike

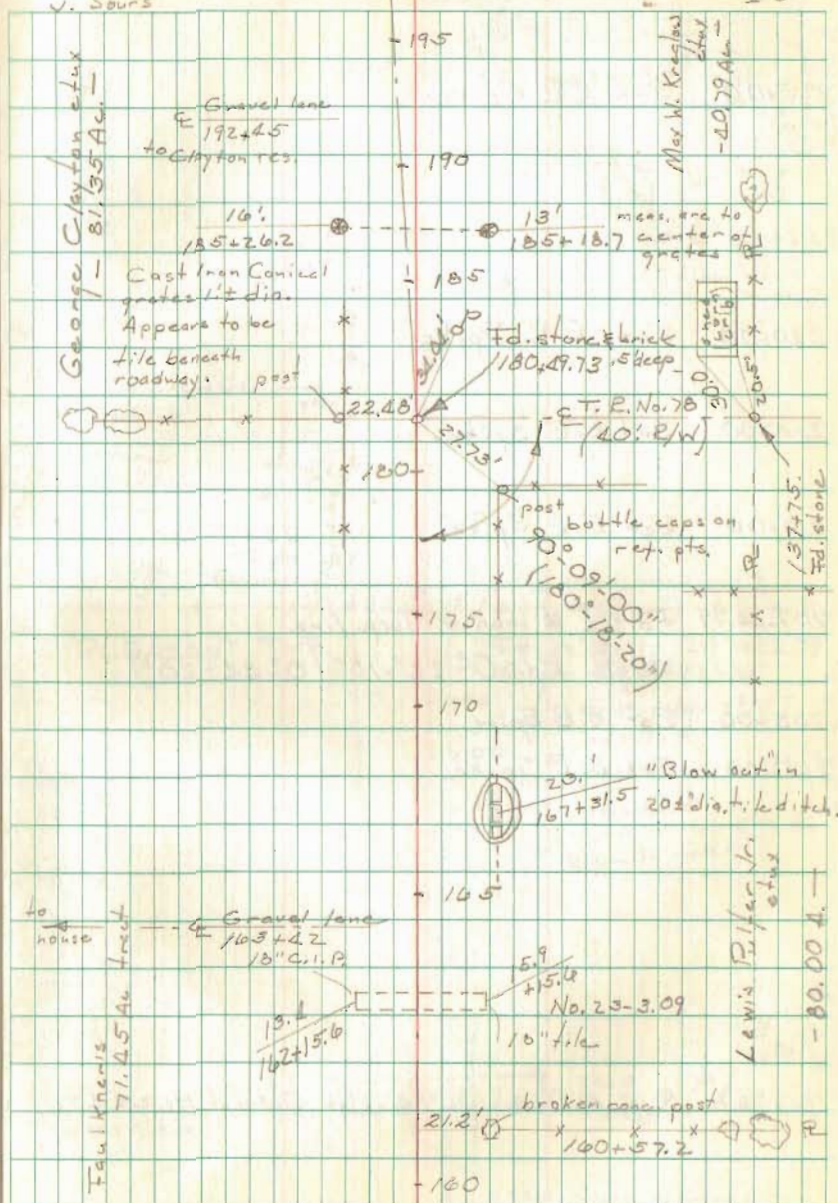
165+00 Set R.R. Spike

160+00 Set R.R. Spike

Nichols  
S. Henry T  
D. Prall  
V. Sours

20 Aug 1970, 180+49.73 on 21 Aug.  
pm 80° overcast

16







FB 708

Rd. No. 23 cont. Bloomfield Twp.

See F.B. 589 pg. 42 for Rd. No. 23 North  
of Road No. 58. (August 1939)

Co. line monument and Rd. No. 58 survey in  
F.B. No. 601 page 29.

233+74.43 Fd. stone .4' deep. F.B. 589 pg. 42

230+00 Set RR Spite

21 Aug. 1970  
pm 7:50 Sunny, windy  
Gurley

18

