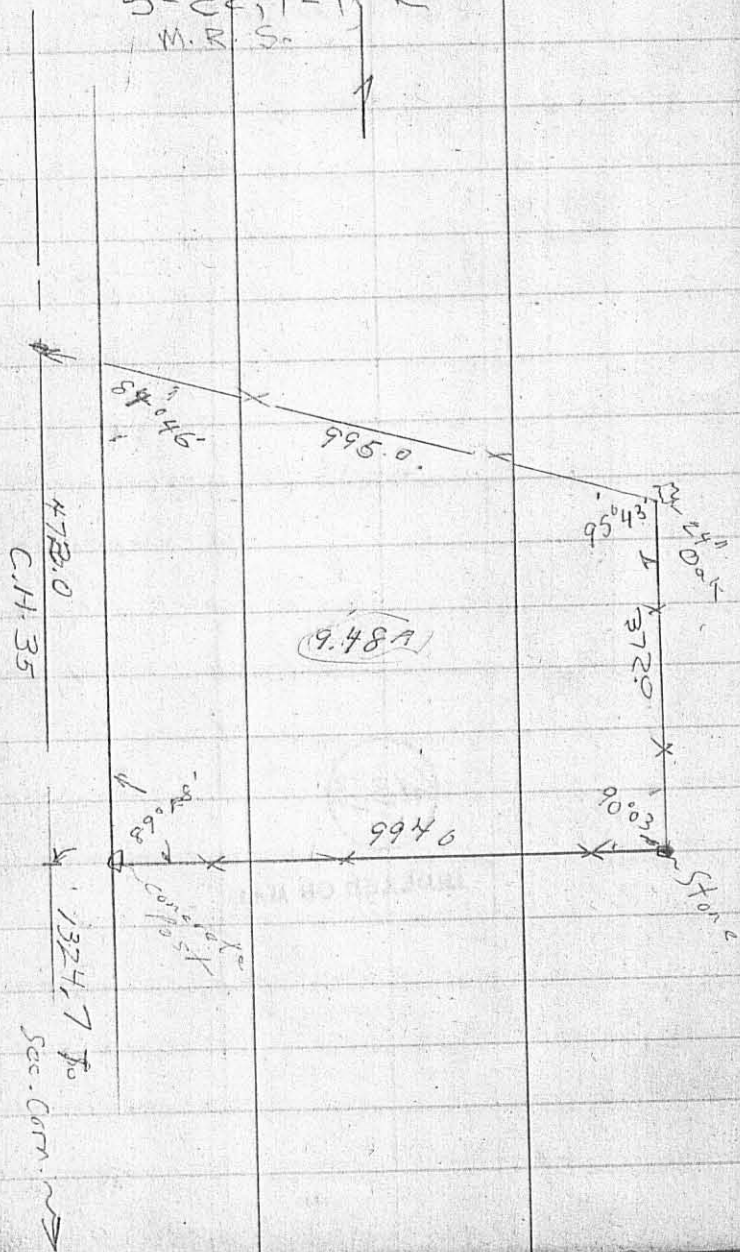


Howard Dodson  
Miami Twp.  
S-22; T-1, R-8  
M. R. S.

Oct., 55

62

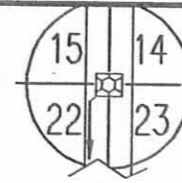


6466 1P

INDEXED ON MAP

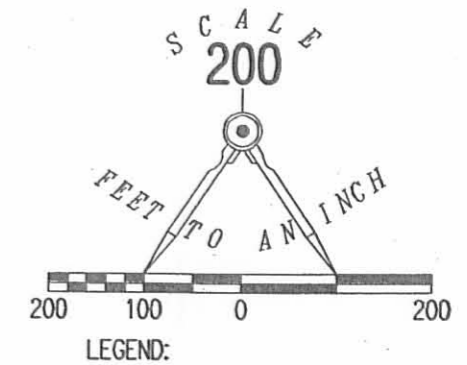
REC'D 2-4-09 SMY BK

TOWNSHIP ROAD 74



PLEASANT TOWNSHIP

MIAMI TOWNSHIP



STEPHEN A. BELL  
53.87 ACRES  
VOL. 404, PG. 496  
TRACT I

STONE FOUND  
1.5' BELOW SURFACE  
NEXT TO TWO OLD  
WOODEN POSTS FOUND

LEE W. DAVIDSON  
75.749 ACRES  
O.R. 906, PG. 485

60" OAK TREE FOUND  
(TREE HAS BEEN CUT OFF  
+/- 5' FROM GROUND)

JUDITH BELL  
9.48 ACRES  
O.R. 854, PG. 522  
TRACT II

MARTHA J. DAVIDSON  
28.52 ACRES  
O.R. 301, PG. 312  
TRACT VI

COUNTY HIGHWAY 35 (50')

RETRACEMENT SURVEY OF THE  
SOUTH AND WEST LINES OF THE  
JUDITH BELL  
9.48 ACRE TRACT  
OFFICIAL RECORD 854, PAGE 522, TRACT II  
SECTION 22, TOWN 1, RANGE 8  
MIAMI TOWNSHIP  
LOGAN COUNTY, OHIO

SURVEYED BY:

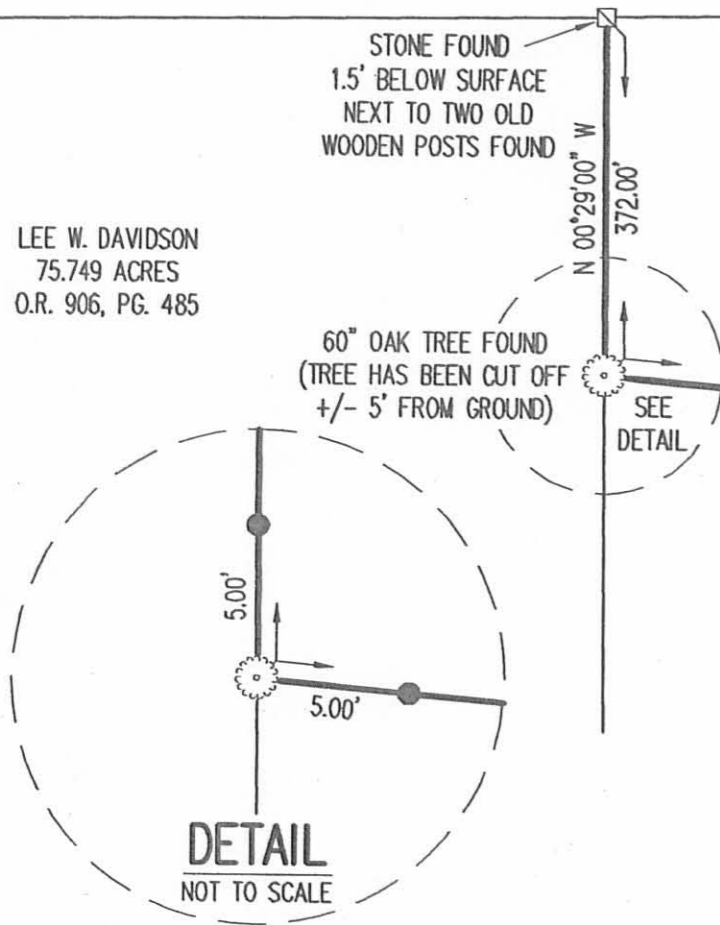
*William K. Bruce*  
WILLIAM K. BRUCE  
PROFESSIONAL SURVEYOR 7437  
FEBRUARY 2, 2009



ORIGINAL STAMP IN GREEN

COPYRIGHT 2009 BY:  
LEE SURVEYING & MAPPING CO., INC.  
117 North Madriver Street  
BELLEFONTAIN, OHIO 43111  
(937) 593-7335  
surveys@lsmcinc.us  
KSS D0209 4748019 L-4748-3

T.S. STATION 29+50.80  
(O.D.O.T. RELOCATION OF  
OHIO ROUTE 235  
PAGE 53 OF 63)



2 WORKING DAYS  
**BEFORE YOU DIG**  
CALL TOLL FREE **800-362-2764**  
OHIO UTILITIES PROTECTION SERVICE

INDEXED ON MAP  
*lettle 2P*