

Leachs Addition to Quincy
Miami Twp.
Logan Co., Ohio

Jefferson Ave. (50')

Stone fd. $5.85^{\circ} 27' 00'' E.$ 841.01'
397.76'

55.26'	55.26'	55.26'	55.26'	55.26'
132.00'	lot #209	132.00'	132.00'	132.00'
55.55'	55.55'	55.55'	55.55'	55.55'

16 1/2 Alley

55.58'	55.58'	55.58'	55.58'	55.58'
132.00'	lot #210	132.00'	132.00'	132.00'
55.86'	55.86'	55.86'	55.86'	55.86'

Leach Ave $5.85^{\circ} 27' 00'' E.$
174.00' 201.00'

55.97'	55.97'	55.97'	55.97'	55.97'
132.00'	lot #225	132.00'	132.00'	132.00'
54.25'	54.25'	54.25'	54.25'	54.25'

379.11'
 $5.85^{\circ} 27' 00'' E.$
541.2' (plat)
570.22' (map)

2146.86'
30'
C.S.R. 706
P.R. Spt. fd.

C. Nichols
C. Dill
P. Simmons
W. Kennedy

June 2002

67

Mag Nail Set

Mag Nail Set
71.67' 338.42' 24.96'

58.56'	58.56'	58.56'	58.56'	58.56'
132.01'	lot #203	132.01'	132.01'	132.01'
79.09'	79.09'	79.09'	79.09'	79.09'

● = R.R. Spts. Set
○ = 5/8" cpd. rebar set

81.66'	81.66'	81.66'	81.66'	81.66'
132.01'	lot #203	132.01'	132.01'	132.01'
102.21'	102.21'	102.21'	102.21'	102.21'

P.C. R.R. Curve

131.30'	131.30'	131.30'	131.30'	131.30'
53.45'	53.45'	53.45'	53.45'	53.45'
54.97'	54.97'	54.97'	54.97'	54.97'
132.01'	lot #218	132.01'	132.01'	132.01'
55.95'	55.95'	55.95'	55.95'	55.95'
81.25'	81.25'	81.25'	81.25'	81.25'

Curve Data
 $A = 4^{\circ} 22' 27''$
 $R = 281.479'$
 $T = 109.41'$
 $L = 218.70'$
 $L.C. = 218.45'$
 $D = 2^{\circ} 00' 00''$

164.10'	164.10'	164.10'	164.10'	164.10'
33'	33'	33'	33'	33'

INDEXED ON MAP
5146

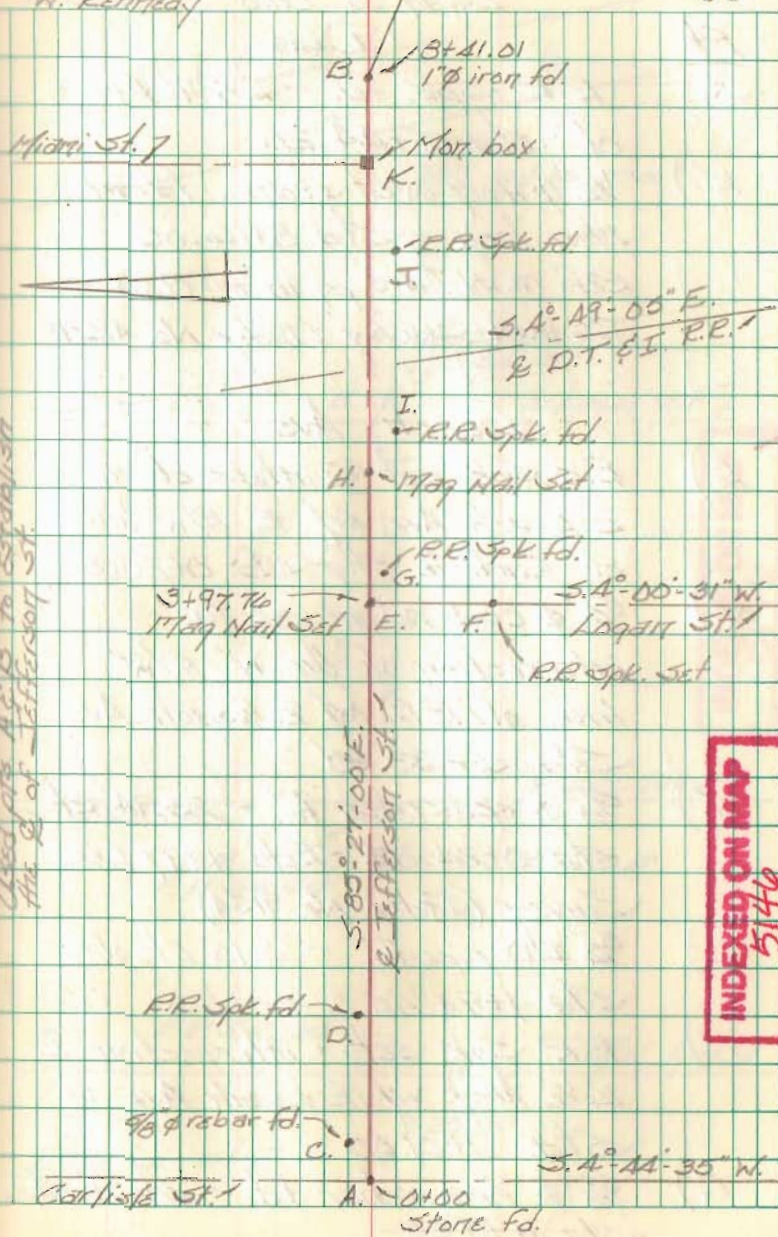
Leach's Addition to Quincy
Miami Twp.
Logan Co., Ohio

- | Pt. | Desc. |
|-----|---|
| A.) | 4" long piece of $\frac{5}{8}$ " ϕ cpd. rebar (O.D.O.T.) fd. over stone. (18" deep) - set mag nail straddles & reset short piece of rebar over stone. - Sta. 0+00 for this survey -
Ref: F.B.K. #415, pg. 10 - R/W plans L-19 |
| B.) | 1" ϕ iron bar fd. - Sta. 8+41.01 for this survey - Ref: F.B.K. #415, pg. 10 |
| C.) | $\frac{5}{8}$ " ϕ rebar fd. - 2.75' Lt. of Sta. 0+01.43 |
| D.) | R.R. Spk. fd. = 1.04' Lt. of Sta. 0+30.11 |
| E.) | Mag Nail Set on line A-B, 397.76' from pt. A - Intersection \mathcal{L} Jefferson St. w/ \mathcal{L} Logan St. |
| F.) | R.R. Spk. set on \mathcal{L} of Logan St. 25.00' from pt. E. |
| G.) | R.R. Spk. fd. 0.48' Rt. of Sta. 3+98.38 |
| H.) | Mag Nail Set on line A-B, 477.43' from pt. A - Intersection \mathcal{L} Jefferson St. w/ the W. R/W line of the D.T. & I. R.R. |
| I.) | R.R. Spk. fd. - 1.08' Rt. of Sta. 4+78.11 |

C. Nichols
C. Dill
P. Simmons
W. Kennedy

June 2002

63



INDEXED ON MAP
5146

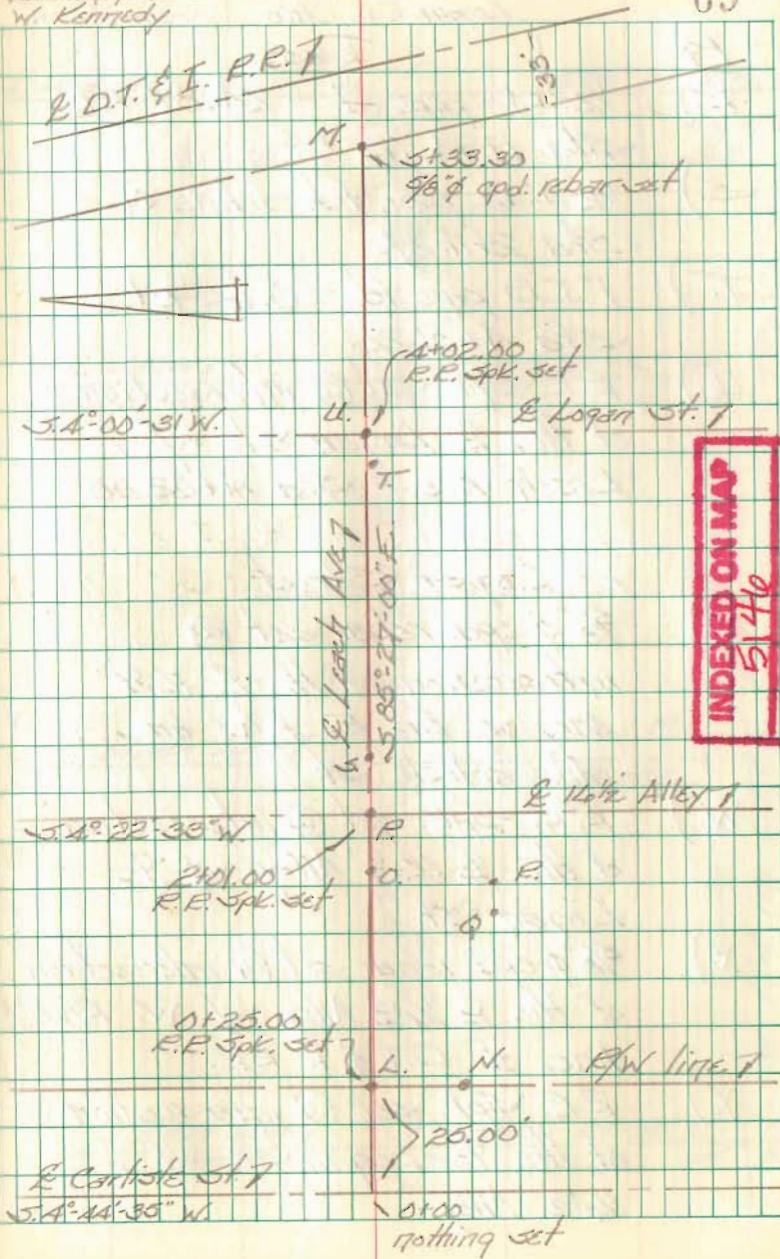
Leach's Addition to Quincy
Miami Twp.
Logan Co., Ohio

- Pt. Desc.
- J.) R.R. Spk. fd. - 2.27' Rt.
of Sta. 5+44.20
- K.) $\frac{1}{2}$ " ϕ iron over stone, fd. in
mon. box - Sta. 8+16.05 -
Ref: F.B.K. #415, pg. 10 - 1948
Dodson Survey (Index No. 4221)
- Leach Ave.
- L.) R.R. Spk. set @ intersection of
& Leach Ave. w/ E. R/W line
of Carlisle St. - Sta. 0+25.00
- M.) $\frac{5}{8}$ " ϕ cpd. rebar set @
intersection of the W. R/W
line of R.R. w/ & Leach Ave.
Sta. 5+33.30
- N.) $\frac{3}{8}$ " ϕ cpd. rebar fd. - 23.94' Rt.
Sta. 0+24.82 - Ref: 1997 Lee
Survey (Index No. 9134)
- O.) $\frac{3}{4}$ " I.D. pipe fd. - 0.10' Lt. of
Sta. 1+94.45
- P.) R.R. Spk. set - intersection &
1/2" Alley w/ & Leach Ave. -
Sta. 2+01.00
- Q.) $\frac{3}{8}$ " ϕ cpd. rebar fd. - 24.51' Rt.
Sta. 1+90.55

C. Nichols
C. Dill
D. Simmons
W. Kennedy

June 2002

69



Leach's Addition to Quincy
Miami Twp.
Logan Co. Ohio

- | Pt. | Desc. |
|-----|---|
| R.) | 1/2" I.D. pipe fd. - 24.87' Rt.
Sta. 1494.72 |
| S.) | 1/2" I.D. pipe fd. - line OK -
Sta. 2411.27 |
| T.) | 1" I.D. pipe fd. - 0.65' Rt.
Sta. 4401.26 |
| U.) | R.R. Spk. set @ intersection
of the E Logan St w/ E
Leach Ave. - Sta. 4402.00 |

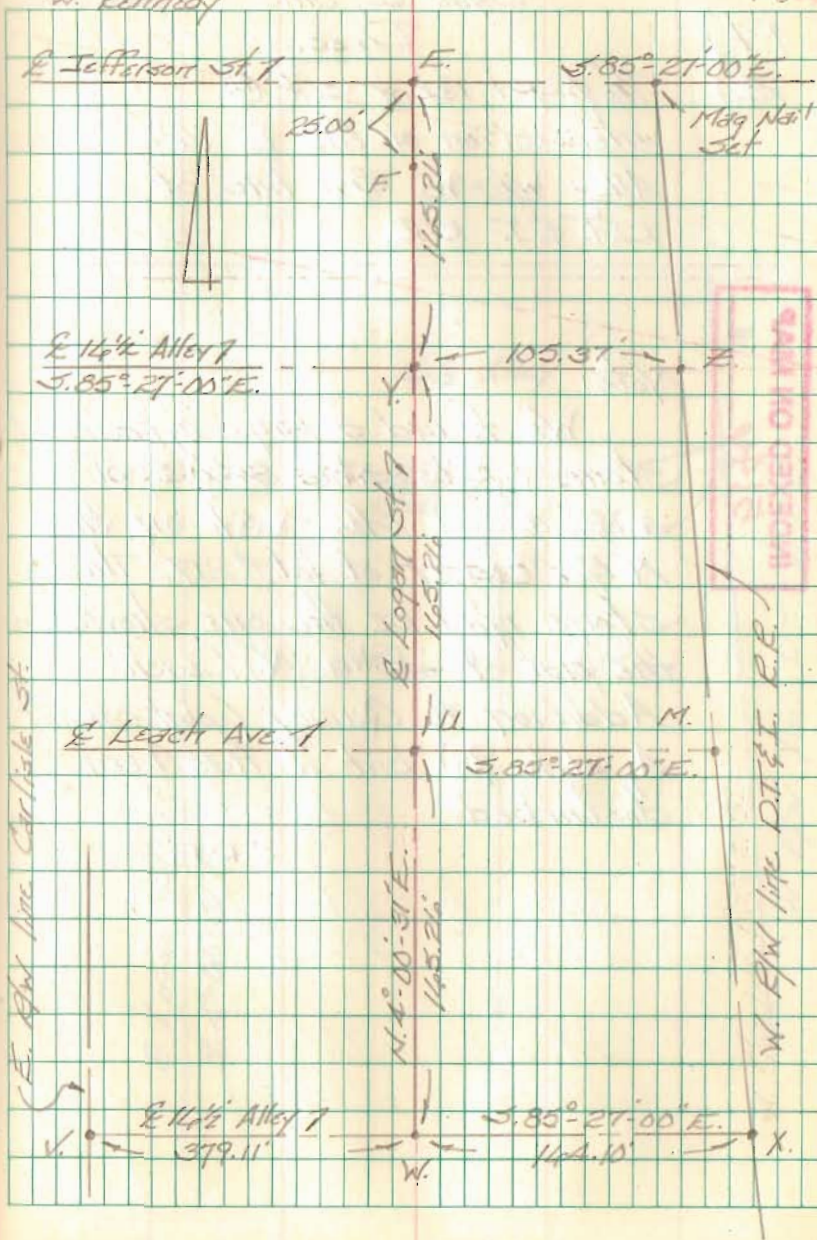
Logan Street

- | | |
|-----|--|
| V.) | 5/8" ϕ cpd. rebar set @
intersection of the E 14 1/2'
Alley w/ the E. R/W line
of Carlisle St. |
| W.) | R.R. Spk. set @ intersection
of the E 14 1/2' Alley w/ E
Logan St. |
| X.) | 5/8" ϕ cpd. rebar set @ intersection
of the E 14 1/2' Alley w/ W. R/W
line of D.T. & I. RR. |
| Y.) | R.R. Spk. set @ intersection
of the E Logan St w/ E
14 1/2' Alley. |

C. Nichols
C. Dill
B. Simmons
W. Kennedy

JUNE 2002

70



Leach's Addition to Quincy
Miami Twp.
Logan Co. Ohio

Pl.)
Z.)

Desc.
3/8" ϕ cpd. rebar set @
intersection of the E 14 1/2'
Alley w/ W. R/W line of
D.T. & I. R.R.

INDEXED ON MAP
5144

Note:

We found a large cylindrical
stone on its side 0.5' S. of
a 3/8" ϕ cpd. rebar set on the
N.E. corner of lot #217. This
stone may be the one shown on
the plat of John N. Leach's
Addition to Quincy (plat cabinet
A, slide 98) but it has been
disturbed.

C.P.R.

C. Nichols
C. Dill
B. Simmons
W. Kennedy

JUNE 2002

71

