

REV'D 10-31-07 smy ok

# Lee Surveying and Mapping Co., Inc.

Land Surveys • Topography • Subdivisions • Construction Layout

117 N. Madriver St.  
Bellefontaine OH 43311



Phone: (937) 593-7335  
Fax: (937) 593-7444

## FARLEY 3.185 ACRES

Lying in Section 34, Town 4, Range 13, Miami Township, Logan County, Ohio.

Being out of the Robert A. Farley and Connie K. Farley 36 acre tract and original 100 acre tract as deeded and described in Official Record 80, Page 358 and Official Record 319, Page 991 of the Logan County Records of Deeds and being more particularly described as follows:

Commencing on a 1 inch iron rod found at P.I. Station 40+45.1 (Logan County Engineer's Field Book 700, Page 3) of County Highway 62 on the east line of Section 34, the east line of Miami Township and the west line of Union Township.

THENCE, with the center-line of County Highway 62 (60 feet wide), the east line of Section 34, the east line of Miami Township and the west line of Union Township, S 4°-29'-33"W, a distance of 2069.22 feet to a railroad spike set at the TRUE POINT OF BEGINNING.

THENCE, with the center-line of County Highway 62, the east line of Section 34, the east line of Miami Township and the west line of Union Township, S 4°-29'-33"W, a distance of 150.00 feet to a railroad spike set, passing a railroad spike set at 75.00 feet.

THENCE, N 85°-30'-26"W, a distance of 30.00 feet to a 5/8 inch iron rod set on the west right-of-way of County Highway 62.

THENCE, with the west right-of-way of County Highway 62, N 4°-29'-33"E, a distance of 63.10 feet to a 5/8 inch iron rod set.

THENCE, N 89°-05'-36"W, a distance of 81.10 feet to a 5/8 inch iron rod set.

THENCE, S 82°-26'-23"W, a distance of 145.23 feet to a 5/8 inch iron rod set.

THENCE, S 67°-38'-13"W, a distance of 136.21 feet to a 5/8 inch iron rod set.

THENCE, N 83°-00'-53"W, a distance of 202.20 feet to a 5/8 inch iron rod set.

THENCE, N 76°-56'-29"W, a distance of 358.80 feet to a 5/8 inch iron rod set.

THENCE, N 72°-48'-02"W, a distance of 140.55 feet to a 5/8 inch iron rod set.

THENCE, N 81°-47'-46"W, a distance of 285.29 feet to a 5/8 inch iron rod set.

THENCE, N 75°-29'-26"W, a distance of 300.00 feet to a 5/8 inch iron rod set.

THENCE, N 4°-29'-42"E, a distance of 363.00 feet to a 5/8 inch iron rod set.

THENCE, S 75°-29'-26"E, a distance of 300.00 feet to a 5/8 inch iron rod set.

THENCE, with the west line of the James R. McDonald 13.00 acre tract (O.R. 583, Pg. 19) and west line extended, S 4°-29'-42"W, a distance of 342.96 feet to a 5/8 inch iron rod set.

THENCE, S 81°-47'-46"E, a distance of 288.15 feet to a 5/8 inch iron rod set.

THENCE, S 72°-48'-02"E, a distance of 141.40 feet to a 5/8 inch iron rod set.

THENCE, S 76°-56'-29"E, a distance of 357.02 feet to a 5/8 inch iron rod set.

INDEXED ON MAP  
4957 1D-1

# Lee Surveying and Mapping Co., Inc.

Land Surveys • Topography • Subdivisions • Construction Layout

117 N. Madriver St.  
Bellefontaine OH 43311



Phone: (937) 593-7335  
Fax: (937) 593-7444

THENCE, S 83°-00'-53"E, a distance of 195.90 feet to a 5/8 inch iron rod set.

THENCE, N 67°-38'-13"E, a distance of 133.57 feet to a 5/8 inch iron rod set.

THENCE, N 82°-26'-23"E, a distance of 149.31 feet to a 5/8 inch iron rod set.

THENCE, S 89°-05'-36"E, a distance of 83.83 feet to a 5/8 inch iron rod set on the west right-of-way of County Highway 62.

THENCE, with the west right-of-way of County Highway 62, N 4°-29'-33"E, a distance of 66.86 feet to a 5/8 inch iron rod set.

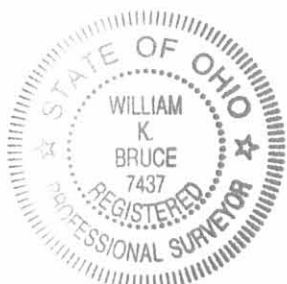
THENCE, S 85°-30'-26"E, a distance of 30.00 feet to the point of beginning.

Containing 3.185 acres, of which 0.103 acre is within the highway right-of-way.

The basis for bearings is the east line of Section 34, being S 4°-29'-33"W, and all other bearings are from angles and distances measured in a field survey by Lee Surveying and Mapping Co., Inc. on September 26, 2007.

Description prepared by:

William K. Bruce  
Professional Surveyor 7437  
September 27, 2008



ORIGINAL STAMP IN GREEN

2848087



REV'D 10-31-07 SMY OK

# Lee Surveying and Mapping Co., Inc.

Land Surveys • Topography • Subdivisions • Construction Layout

117 N. Madriver St.  
Bellefontaine OH 43311



Phone: (937) 593-7335  
Fax: (937) 593-7444

## FARLEY 20.00 FEET WIDE INGRESS/EGRESS EASEMENT

Lying in Section 34, Town 4, Range 13, Miami Township, Logan County, Ohio.

Being a 20.00 feet wide ingress/egress easement over the Robert A. Farley and Connie K. Farley 36 acre tract as deeded and described in Official Record 80, Page 358 of the Logan County Records of Deeds and being more particularly described as follows:

Commencing on a 1 inch iron rod found at P.I. Station 40+45.1 (Logan County Engineer's Field Book 700, Page 3) of County Highway 62 on the east line of Section 34, the east line of Miami Township and the west line of Union Township.

THENCE, with the center-line of County Highway 62 (60 feet wide), the east line of Section 34, the east line of Miami Township and the west line of Union Township, S 4°-29'-33"W, a distance of 2069.22 feet to a railroad spike set.

THENCE, with the center-line of County Highway 62, the east line of Section 34, the east line of Miami Township and the west line of Union Township, S 4°-29'-33"W, a distance of 64.98 feet to a point at the TRUE POINT OF BEGINNING.

THENCE, with the center-line of County Highway 62, the east line of Section 34, the east line of Miami Township and the west line of Union Township, S 4°-29'-33"W, a distance of 20.04 feet to a point, passing a railroad spike set at 10.02 feet.

THENCE, N 89°-05'-36"W, a distance of 30.06 feet to a 5/8 inch iron rod set.

THENCE, N 89°-05'-36"W, a distance of 81.10 feet to a 5/8 inch iron rod set.

THENCE, S 82°-26'-23"W, a distance of 145.23 feet to a 5/8 inch iron rod set.

THENCE, S 67°-38'-13"W, a distance of 136.21 feet to a 5/8 inch iron rod set.

THENCE, N 83°-00'-53"W, a distance of 202.20 feet to a 5/8 inch iron rod set.

THENCE, N 76°-56'-29"W, a distance of 358.80 feet to a 5/8 inch iron rod set.

THENCE, N 72°-48'-02"W, a distance of 140.55 feet to a 5/8 inch iron rod set.

THENCE, N 81°-47'-46"W, a distance of 285.29 feet to a 5/8 inch iron rod set.

THENCE, with an east line of the Robert A. Farley and Connie K. Farley original 100 acre tract (O.R. 319, Pg. 991), N 4°-29'-42"E, a distance of 20.04 feet to a 5/8 inch iron rod set.

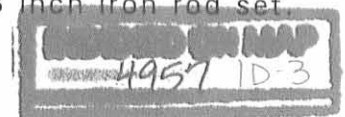
THENCE, S 81°-47'-46"E, a distance of 288.15 feet to a 5/8 inch iron rod set.

THENCE, S 72°-48'-02"E, a distance of 141.40 feet to a 5/8 inch iron rod set.

THENCE, S 76°-56'-29"E, a distance of 357.02 feet to a 5/8 inch iron rod set.

THENCE, S 83°-00'-53"E, a distance of 195.90 feet to a 5/8 inch iron rod set.

THENCE, N 67°-38'-13"E, a distance of 133.57 feet to a 5/8 inch iron rod set.



# Lee Surveying and Mapping Co., Inc.

Land Surveys • Topography • Subdivisions • Construction Layout

117 N. Madriver St.  
Bellefontaine OH 43311



Phone: (937) 593-7335  
Fax: (937) 593-7444

THENCE, N 82°-26'-23"E, a distance of 149.31 feet to a 5/8 inch iron rod set.

THENCE, S 89°-05'-36"E, a distance of 83.83 feet to a 5/8 inch iron rod set on the west right-of-way of County Highway 62.

THENCE, S 89°-05'-36"E, a distance of 30.06 feet to the point of beginning.

The basis for bearings is the east line of Section 34, being S 4°-29'-33"W, and all other bearings are from angles and distances measured in a field survey by Lee Surveying and Mapping Co., Inc. on September 26, 2007.

Description prepared by:

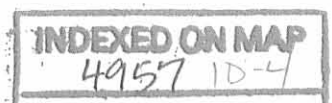
A handwritten signature in black ink that reads "William K. Bruce".

William K. Bruce  
Professional Surveyor 7437  
September 27, 2008

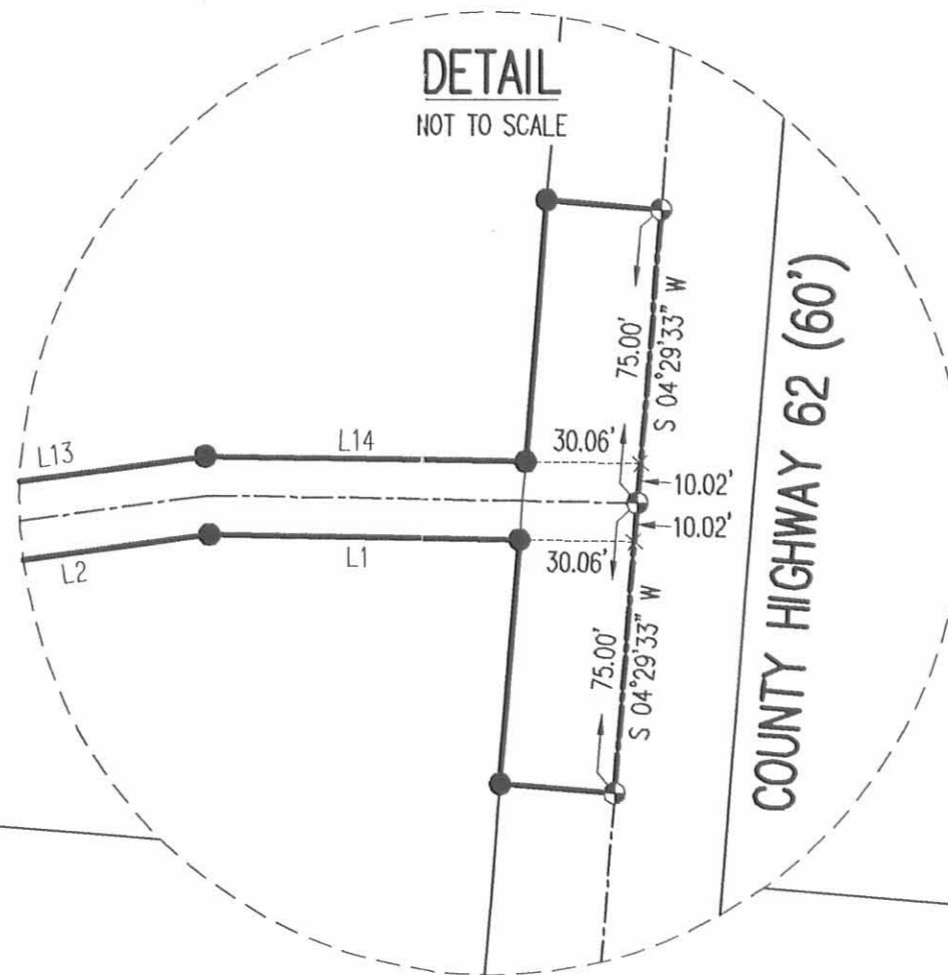
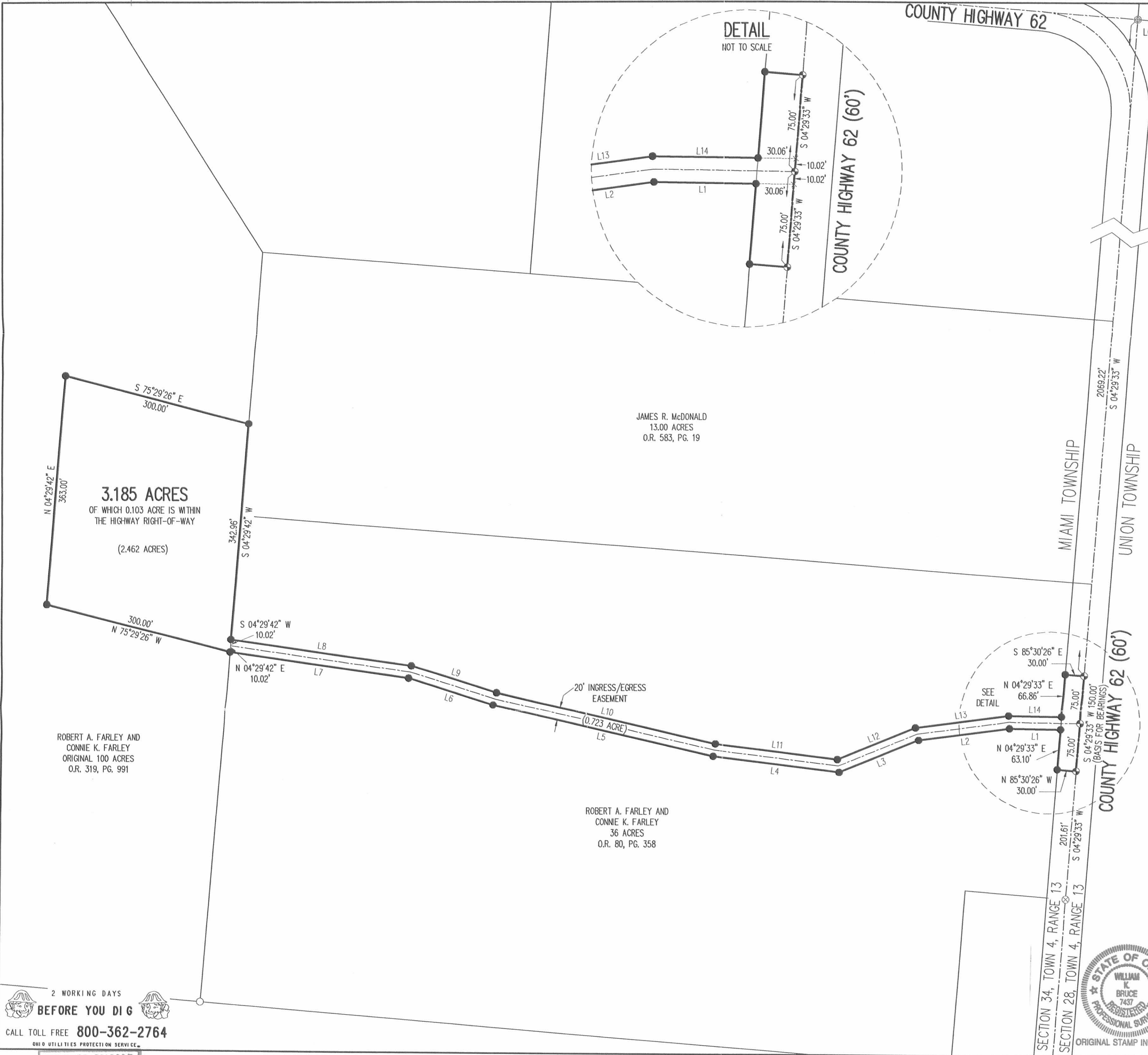


ORIGINAL STAMP IN GREEN

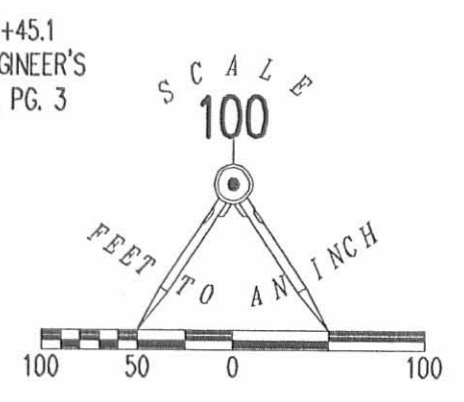
2848087



REV'D 10-31-07 SWM DM



P.I. STATION 40+45.1  
LOGAN COUNTY ENGINEER'S  
FIELD BOOK 700, PG. 3



- LEGEND:
- ⊕ 1 INCH IRON ROD FOUND
  - ⊗ RAILROAD SPIKE FOUND
  - ⊕ RAILROAD SPIKE SET
  - 5/8 INCH IRON ROD SET
  - 5/8 INCH IRON ROD FOUND

LINE	BEARING	DISTANCE
L1	N 89°05'36" W	81.10'
L2	S 82°26'23" W	145.23'
L3	S 67°38'13" W	136.21'
L4	N 83°00'53" W	202.20'
L5	N 76°56'29" W	358.80'
L6	N 72°48'02" W	140.55'
L7	N 81°47'46" W	285.29'
L8	S 81°47'46" E	288.15'
L9	S 72°48'02" E	141.40'
L10	S 76°56'29" E	357.02'
L11	S 83°00'53" E	195.90'
L12	N 67°38'13" E	133.57'
L13	N 82°26'23" E	149.31'
L14	S 89°05'36" E	83.83'

JAMES R. McDONALD  
13.00 ACRES  
O.R. 583, PG. 19

**3.185 ACRES**  
OF WHICH 0.103 ACRE IS WITHIN  
THE HIGHWAY RIGHT-OF-WAY  
(2.462 ACRES)

ROBERT A. FARLEY AND  
CONNIE K. FARLEY  
ORIGINAL 100 ACRES  
O.R. 319, PG. 991

ROBERT A. FARLEY AND  
CONNIE K. FARLEY  
36 ACRES  
O.R. 80, PG. 358

**SURVEY OF 3.185 ACRES OUT OF THE  
ROBERT A. FARLEY AND  
CONNIE K. FARLEY  
36 ACRE TRACT AND  
ORIGINAL 100 ACRE TRACT  
OFFICIAL RECORD 80, PAGE 358  
OFFICIAL RECORD 319, PAGE 991  
SECTION 34, TOWN 4, RANGE 13  
MIAMI TOWNSHIP  
LOGAN COUNTY, OHIO**

SURVEYED BY:

*William K. Bruce*  
WILLIAM K. BRUCE  
PROFESSIONAL SURVEYOR 7437  
SEPTEMBER 26, 2007



COPYRIGHT 2007 BY:  
**LEE SURVEYING & MAPPING CO., INC.**  
117 North Madriver Street  
BELLEFONTAIN, OHIO 43311  
(937) 593-7335  
surveys@lsmcinc.us  
KSS D0907 2848087 L-2848-2

2 WORKING DAYS  
**BEFORE YOU DIG**  
CALL TOLL FREE **800-362-2764**  
OHIO UTILITIES PROTECTION SERVICE

INDEXED ON MAP  
4957 IF

1  
LONGBRAKE SURVEY

Received 11-17-87

MAP ROOM  
OK (CR)

The following described real estate situated in the Township of Miami, County of Logan, State of Ohio and being a part of the southeast quarter of Section 34, Town 4, Range 13, Between the Miami Rivers Survey and being a part of Dean A. and Judith E. Longbrake's present 37.00 Acre tract as recorded in Deed Volume 346 Pages 80-81 (4-6-1973) and being a part of Permanent Parcel No. 25-132-00-00-030 and being more particularly described as follows:

Beginning at an 1 inch Bronze Shaft found at the southeast corner to Section 34 and being Station No. 13 + 50.4 of the survey of C. H. No. 62 as recorded in Logan County Engineer's Field Book No. 700 Page 2 and being on the Line between Champaign and Logan Counties, and being the southeast corner to Miami Township and the southwest corner to Union Township and being the southeast corner to the 37.00 Acre tract as above mentioned;

Thence with the south line of Section 34 and the County Line and the south line of said 37.00 Acre tract, N. 89° 55' W. 158.40 feet to a 5/8" x 30" Rebar set, passing through a County Line monument at 20.00 feet;

Thence with a line parallel to the east line of said Section, North 275.00 feet to a 5/8" x 30" Rebar set;

Thence with a line parallel to the south line of said Section, S. 89° 55' E. 158.40 feet to a R. R. Spike set in the east line of said Section, passing through a 5/8" x 30" Rebar set at 128.40 feet;

Thence with the east line of said Section, which is also the line between Miami and Union Townships, South 275.00 feet (this line is the basis of bearing for this survey) to the place of beginning, containing 43,560.00 square feet or 1.00 Acre, more or less.

Of the above described tract, there is 8,250.00 square feet or 0.189 Acres in the right of way of C. H. No. 62.

I hereby certify that the above description is the result of a field survey made by me on November 11, 1987.



*Daniel E. Gilbert*

Daniel E. Gilbert, P.S.  
Reg. Sur. No. 5402  
400 N. Park St.  
Bellefontaine, Ohio 43311

INDEXED ON MAP  
4957 2D



**LESLIE H. GEESLIN**

**REGISTERED SURVEYOR 5248**

**P. O. BOX 274**

**RUSHSVLVANIA, OHIO 43347**

**TELEPHONE: (937) 468-2793**

**FAX: (937) 468-2080**

SNAPP SURVEY

November 4, 1998

The following described real estate situated in the State of Ohio, County of Logan Township of Miami, being part of Section 34, Town 4, Range 13, M. R. S., and more particularly described as follows:

Beginning at a magnetic nail set in the centerline of County Highway 62 that is S. 85° 00' 00" E. 556.57 feet from a magnetic nail found at the northeast corner of Samuel E. Harpest, etal's 59.27 acre tract as described in D. B. Vol. 391 Page 781.

Thence with the centerline of said C. H. 62 S. 85° 00' 00" E. 229.46 feet to a magnetic nail set.

Thence S. 8° 13' 11" W. 380.28 feet to a 5/8 inch iron bar set, passing a 5/8 inch iron bar set at 30.05 feet.

Thence N. 85° 00' 00" W. 229.46 feet to a 5/8 inch iron bar set.

Thence N. 8° 13' 11" E. 380.28 feet to the place of beginning, passing a 5/8 inch iron bar set at 350.23 feet.

Containing 2.000 acres more or less, of which 0.158 acre is in the right of way of C. H. 62.

The above described 2.000 acre tract being part of Kerry L. Snapp etal's 23.976 acre tract as described in O. R. 363 Page 957.

Bearings are based on an assumed bearing ( S. 85° 00' 00" E. ) for the centerline of C. H. 62 in this field survey by Leslie H. Geeslin, Reg. Surveyor # 5248 on November 4, 1998.



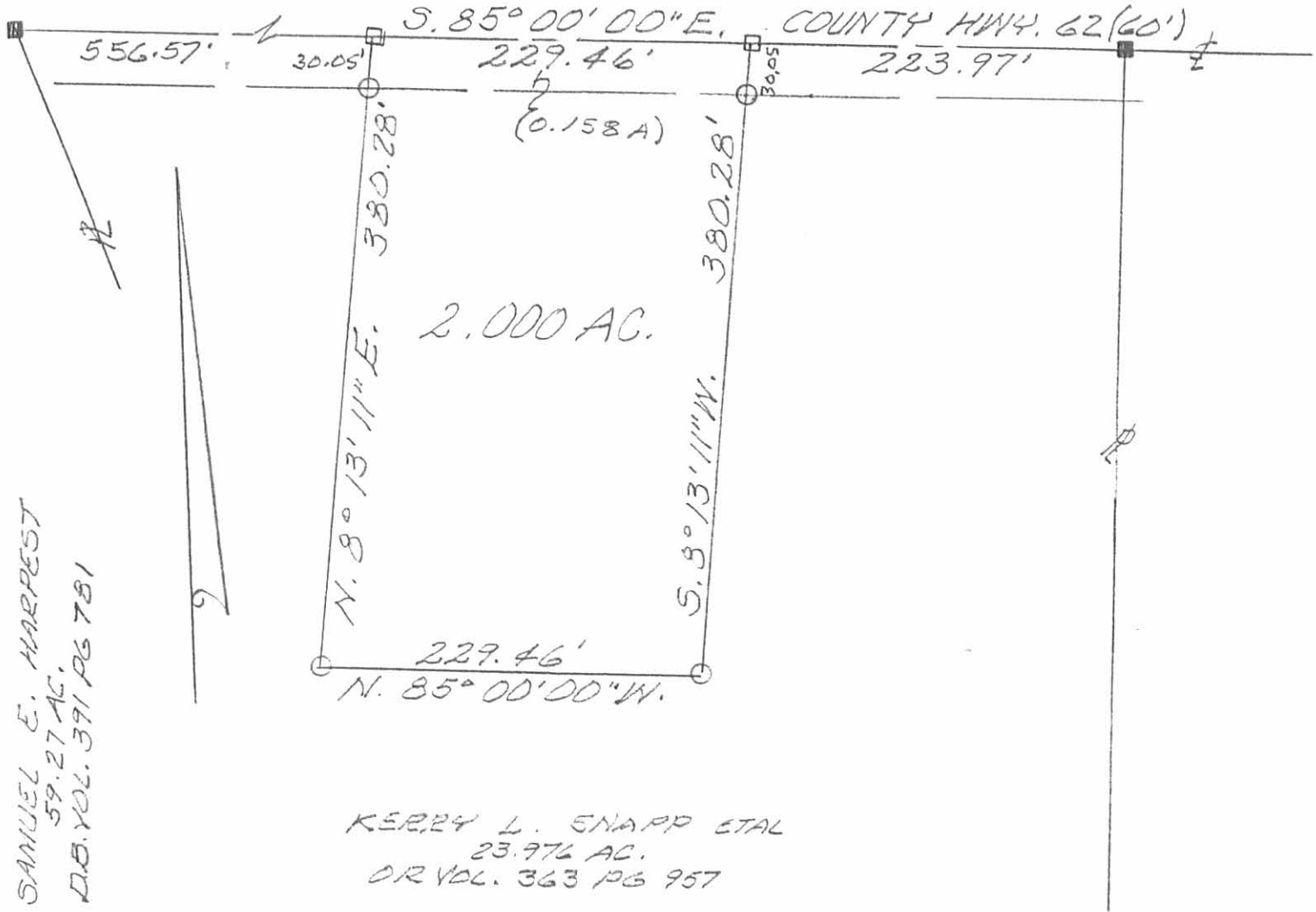
MIAMI24\SNAPP.SAM

INDEXED ON MAP  
4957 3D

*Leslie H. Geeslin*



SAMUEL E. HARPEST  
 59.27 AC.  
 D.B. VOL. 371 PG 781



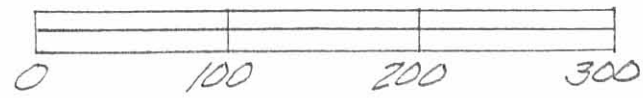
KERRY L. SNAPP ETAL  
 23.976 AC.  
 OR VOL. 363 PG 957

SURVEY OF 2.00 ACRE TRACT  
 IN SECTION 34, TOWN 4, RANGE 13, MRS. 1  
 MIAMI TOWNSHIP, LOGAN COUNTY, OHIO  
 FOR KERRY SNAPP.

NOVEMBER 4, 1998  
 SCALE: 1"=100'

LEGEND

- = MAG. NAIL SET
- = MAG. NAIL FOUND
- = 5/8" IRON BAR SET



4957 3P

Leslie H. Geeslin  
 LESLIE H. GEESLIN  
 RUSHLYANIA, OHIO  
 PH 937-268-2793

Ropp Description  
December 1971

Being situated in Miami Township, Logan County, Ohio; and  
being a part of Section 34, Town 4, Range 13.

Beginning at the southeast corner of Section 34.

Thence with the south line of Section 34 (also the line between  
Logan and Champaign Counties.) N 89<sup>0</sup> - 55' W 1355.5 feet to an iron.

Thence North 1188.0 feet to an iron.

Thence East 1355.5 feet to an iron in the east line of Section 34.

Thence with the east line of Section 34 (also the line between  
Miami and Union Townships and also the center of County Road 62)  
South 1190.0 feet to the place of beginning.

Containing 37.00 acres more or less. Being surveyed from  
a 137.00 acre tract.

---

Owen E. Shirk  
Surveyor 4271

INDEXED ON MAP  
4957 4D

ROPP SURVEY

MIAMI TOWNSHIP, LOGAN COUNTY, OHIO  
SECTION 34, TOWN 4, RANGE 13  
1" = 300' - • DENOTES IRONS



Owen K. Shirk  
Surveyor 4271  
Surveyed: 12-22-71

INDEXED ON MAP  
4957 4P

**LESLIE H. GEESLIN**

**REGISTERED SURVEYOR 5248**

**P. O. BOX 274**

**RUSHSVLVANIA, OHIO 43347**

**TELEPHONE: (937) 468-2793**

**FARLEY SURVEY**

March 5, 1998

The following described real estate situated in the State of Ohio, County of Logan, Township of Miami, being part of Section 34, Town 4, Range 13, M. R. S. and more particularly described as follows:

Beginning at a 5/8 inch iron bar found in the centerline of County Highway 62 at the northeast corner of Scott C. and Jill R. Hepner's 13.00 acre tract as described in O. R. Vol. 305 pages 500-502.

Thence with said Hepner's north line N. 85° 01' 08" W. 928.66 feet to a 5/8 inch iron bar set, passing a 5/8 inch iron bar set at 30.00 feet.

Thence N. 4° 58' 21" E. 1506.03 feet to a magnetic nail set in the centerline of said C. H. 62, passing a 5/8 inch iron bar set at 1476.03 feet.

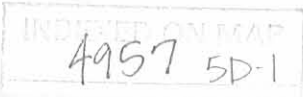
Thence with the centerline of said C. H. 62 S. 85° 00' 00" E. 928.66 feet to a 1 inch iron bar found.

Thence again with the centerline of said C. H. 62 S. 4° 58' 21" W. 1505.73 feet to the place of beginning.

Containing 32.104 acres more or less of which 1.656 acre is in the right of way of County Highway 62.

The above described 32.104 acre tract being part of Robert A. and Connie K. Farley's 100.00 acre tract as described in O. R. Vol. 319 Page 991.

Bearings are based on an assumed bearing (S. 85° 00' 00" E.) for the centerline of County Highway 62 in this field survey by Leslie H. Geeslin, Reg. Surveyor 5248 on March 5, 1998.



*Leslie H. Geeslin*

**LESLIE H. GEESLIN**

REGISTERED SURVEYOR 5248

P. O. BOX 274

RUSHSVLVANIA, OHIO 43347

TELEPHONE: (937) 468-2793

FARLEY SURVEY

March 5, 1998

The following described real estate situated in the State of Ohio, County of Logan, Township of Miami, being part of Section 34, Town 4, Range 13, M. R. S. and more particularly described as follows:

Beginning at a 5/8 inch iron bar found at the northwest corner of Scott C. and Jill R. Hepner's 13.00 acre tract as described in O. R. Vol. 305 pages 500-502.

Thence N. 10° 55' 46" W. 479.09 feet to a 12 inch concrete post found at the southeast corner of Samuel Eugene and Annette Suzann Harpest's 59.27 acre tract as described in D. B. Vol. 391 page 781.

Thence with said Harpest's east line N. 18° 30' 01" W. 1140.03 feet to a magnetic nail set in the centerline of County Highway 62, passing a R. R. tie post found at 1107.33 feet.

Thence with the centerline of said C. H. 62 S. 85° 00' 00" E. 1010.00 feet to a magnetic nail set.

Thence S. 4° 58' 21" W. 1506.03 feet to a 5/8 inch iron bar set in said Hepner's north line, passing a 5/8 inch iron bar set at 30.00 feet.

Thence with said Hepner's north line N. 85° 01' 08" W. 424.64 feet to the place of beginning.

Containing 23.976 acres more or less of which 0.696 acre is in the right of way of County Highway 62.

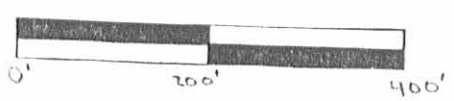
The above described 23.976 acre tract being part of Robert A. and Connie K. Farley's 100.00 acre tract as described in O. R. Vol. 319 Page 991.

Bearings are based on an assumed bearing (S.85° 00' 00" E.) for the centerline of County Highway 62 in this field survey by Leslie H. Geeslin, Reg. Surveyor 5248 on March 5, 1998.



INDEXED ONLINE  
49575D-2

*Leslie H. Geeslin*



SCALE: 1" = 200'

LEGEND:

- = MAG. NAIL SET
- ⊙ = 1" IRON BAR FO.
- = 5/8" IRON BAR FO.
- = R/R TIE POST FO.
- △ = 12" CONC POST FO.
- = 5/8" IRON BAR SET

SURVEY OF 23.976 ACRES AND  
 32.104 ACRES IN SECTION 34,  
 TOWN 4, RANGE 13, M.R.S., MIAMI  
 TOWNSHIP, LOGAN COUNTY, OHIO  
 FOR ROBERT FARLEY ON  
 MARCH 5, 1998



Leslie H. Geslin  
 LESLIE H. GESLIN  
 RUSHLUANIA, OHIO  
 PH: (737) 468-2793  
 (D.L.G.)

INDEXED ON MAP  
 4957 5P

# Lee Surveying and Mapping Co., Inc.

Land Surveys • Topography • Subdivisions • Construction Layout

117 N. Madriver St.  
Bellefontaine OH 43311



Phone: (937) 593-7335  
Fax: (937) 593-7444

## ECKART 6.396 ACRES TRACT A

Lying in Section 34, Town 4, Range 13, Miami Township, Logan County, Ohio.

Being out of the Roger C. Eckart and Patricia L. Eckart 32.104 acre tract as deeded and described in Official Record 431, Page 486 of the Logan County Records of Deeds and being more particularly described as follows:

Beginning at a 1 inch iron rod found at the northeast corner of the southeast quarter of Section 34 on the east line of Miami Township at the point of intersection station 40+45.1 (Logan County Engineers' Field Book 700, Page 3) of County Highway 62.

THENCE, with the east lines of Section 34 and Miami Township and the center-line of County Highway 62, (60 feet wide), S 4°-58'-21" W, a distance of 1205.58 feet to a MAG nail set at the TRUE POINT OF BEGINNING.

THENCE, with the east lines of Section 34 and Miami Township and the center-line of County Highway 62, S 4°-58'-21" W, a distance of 300.00 feet to a 5/8 inch iron rod found.

THENCE, with the north line of the Scott C. Hepner 13.000 acre tract, (O.R. 426, Pg. 361), N 85°-00'-43" W, a distance of 928.65 feet to a 5/8 inch iron rod found, passing a 5/8 inch iron rod set at 30.00 feet.

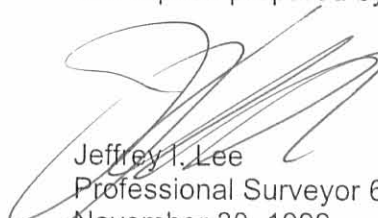
THENCE, with the east line of the Kerry L. Snapp 23.976 acre tract, (O.R. 363, Pg. 957), N 4°-58'-14" E, a distance of 300.00 feet to a 5/8 inch iron rod set.

THENCE, S 85°-00'-43" E, a distance of 928.66 feet to the point of beginning, passing a 5/8 inch iron rod set at 898.66 feet.

Containing 6.396 acres of which 0.207 acre is within the highway right-of-way.

The basis for bearings is the east line of Section 34, being S 4°-58'-21" W, and all other bearings are from angles and distances measured in a field survey by Lee Surveying and Mapping Co., Inc. on November 26, 1999.

Description prepared by:

  
Jeffrey I. Lee  
Professional Surveyor 6359  
November 30, 1999



ORIGINAL STAMP IN GREEN  
L-2848

4957 6D-1

# Lee Surveying and Mapping Co., Inc.

Land Surveys • Topography • Subdivisions • Construction Layout

117 N. Madriver St.  
Bellefontaine OH 43311



Phone: (937) 593-7335  
Fax: (937) 593-7444

## ECKART 6.396 ACRES TRACT B

Lying in Section 34, Town 4, Range 13, Miami Township, Logan County, Ohio.

Being out of the Roger C. Eckart and Patricia L. Eckart 32.104 acre tract as deeded and described in Official Record 431, Page 486 of the Logan County Records of Deeds and being more particularly described as follows:

Beginning at a 1 inch iron rod found at the northeast corner of the southeast quarter of Section 34 on the east line of Miami Township at the point of intersection station 40+45.1 (Logan County Engineers' Field Book 700, Page 3) of County Highway 62.

THENCE, with the east lines of Section 34 and Miami Township and the center-line of County Highway 62, (60 feet wide), S 4°-58'-21" W, a distance of 905.58 feet to a MAG nail set at the TRUE POINT OF BEGINNING.

THENCE, with the east lines of Section 34 and Miami Township and the center-line of County Highway 62, S 4°-58'-21" W, a distance of 300.00 feet to a MAG nail set.

THENCE, N 85°-00'-43" W, a distance of 928.66 feet to a 5/8 inch iron rod set, passing a 5/8 inch iron rod set at 30.00 feet.

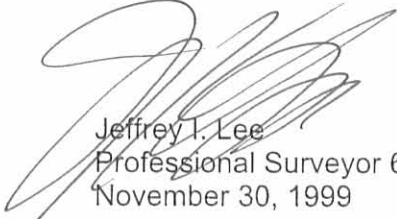
THENCE, with the east line of the Kerry L. Snapp 23.976 acre tract, (O.R. 363, Pg. 957), N 4°-58'-14" E, a distance of 300.00 feet to a 5/8 inch iron rod set.

THENCE, S 85°-00'-43" E, a distance of 928.67 feet to the point of beginning, passing a 5/8 inch iron rod set at 898.67 feet.

Containing 6.396 acres of which 0.207 acre is within the highway right-of-way.

The basis for bearings is the east line of Section 34, being S 4°-58'-21" W, and all other bearings are from angles and distances measured in a field survey by Lee Surveying and Mapping Co., Inc. on November 26, 1999.

Description prepared by:

  
Jeffrey I. Lee  
Professional Surveyor 6359  
November 30, 1999



ORIGINAL STAMP IN GREEN  
L-2848

4957 UD-2



# Lee Surveying and Mapping Co., Inc.

Land Surveys • Topography • Subdivisions • Construction Layout

117 N. Madriver St.  
Bellefontaine OH 43311



Phone: (937) 593-7335  
Fax: (937) 593-7444

## ECKART 6.396 ACRES TRACT C

Lying in Section 34, Town 4, Range 13, Miami Township, Logan County, Ohio.

Being out of the Roger C. Eckart and Patricia L. Eckart 32.104 acre tract as deeded and described in Official Record 431, Page 486 of the Logan County Records of Deeds and being more particularly described as follows:

Beginning at a 1 inch iron rod found at the northeast corner of the southeast quarter of Section 34 on the east line of Miami Township at the point of intersection station 40+45.1 (Logan County Engineers' Field Book 700, Page 3) of County Highway 62.

THENCE, with the east lines of Section 34 and Miami Township and the center-line of County Highway 62, (60 feet wide), S 4°-58'-21" W, a distance of 605.58 feet to a MAG nail set at the TRUE POINT OF BEGINNING.

THENCE, with the east lines of Section 34 and Miami Township and the center-line of County Highway 62, S 4°-58'-21" W, a distance of 300.00 feet to a MAG nail set.

THENCE, N 85°-00'-43" W, a distance of 928.67 feet to a 5/8 inch iron rod set, passing a 5/8 inch iron rod set at 30.00 feet.

THENCE, with the east line of the Kerry L. Snapp 23.976 acre tract, (O.R. 363, Pg. 957), N 4°-58'-14" E, a distance of 300.00 feet to a 5/8 inch iron rod set.

THENCE, S 85°-00'-43" E, a distance of 928.68 feet to the point of beginning, passing a 5/8 inch iron rod set at 288.70 and 898.68 feet.

Containing 6.396 acres of which 0.207 acre is within the highway right-of-way.

The basis for bearings is the east line of Section 34, being S 4°-58'-21" W, and all other bearings are from angles and distances measured in a field survey by Lee Surveying and Mapping Co., Inc. on November 26, 1999.

Description prepared by:

A handwritten signature in black ink, appearing to read 'Jeffrey I. Lee', is written over a circular stamp.

Jeffrey I. Lee  
Professional Surveyor 6359  
November 30, 1999



ORIGINAL STAMP IN GREEN

L-2848

4957 6D-3

# Lee Surveying and Mapping Co., Inc.

Land Surveys • Topography • Subdivisions • Construction Layout

117 N. Madriver St.  
Bellefontaine OH 43311



Phone: (937) 593-7335  
Fax: (937) 593-7444

## ECKART 4.014 ACRES TRACT D

Lying in Section 34, Town 4, Range 13, Miami Township, Logan County, Ohio.

Being out of the Roger C. Eckart and Patricia L. Eckart 32.104 acre tract as deeded and described in Official Record 431, Page 486 of the Logan County Records of Deeds and being more particularly described as follows:

Beginning at a 1 inch iron rod found at the northeast corner of the southeast quarter of Section 34 on the east line of Miami Township at the point of intersection station 40+45.1 (Logan County Engineers' Field Book 700, Page 3) of County Highway 62.

THENCE, with the north line of the southeast quarter of Section 34 and the center-line of County Highway 62, (60 feet wide), N 85°-00'-06" W, a distance of 640.00 feet to a MAG nail set at the TRUE POINT OF BEGINNING.

THENCE, S 4°-58'-14" W, a distance of 605.69 feet to a 5/8 inch iron rod set, passing a 5/8 inch iron rod set at 30.00 feet.

THENCE, N 85°-00'-43" W, a distance of 288.70 feet to a 5/8 inch iron rod set.

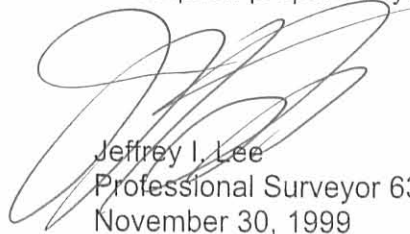
THENCE, with the east line of the Kerry L. Snapp 23.976 acre tract, (O.R. 363, Pg. 957), N 4°-58'-14" E, a distance of 605.74 feet to a MAG nail found, passing a 5/8 inch iron rod found at 575.60 feet.

THENCE, with the north line of the southeast quarter of Section 34 and the center-line of County Highway 62, S 85°-00'-06" E, a distance of 288.70 feet to the point of beginning.

Containing 4.014 acres of which 0.199 acre is within the highway right-of-way.

The basis for bearings is the east line of Section 34, being S 4°-58'-21" W, and all other bearings are from angles and distances measured in a field survey by Lee Surveying and Mapping Co., Inc. on November 26, 1999.

Description prepared by:

  
Jeffrey I. Lee  
Professional Surveyor 6359  
November 30, 1999



ORIGINAL STAMP IN GREEN  
L-2848

4957 6D-4

# Lee Surveying and Mapping Co., Inc.

Land Surveys • Topography • Subdivisions • Construction Layout

117 N. Madriver St.  
Bellefontaine OH 43311



Phone: (937) 593-7335  
Fax: (937) 593-7444

## ECKART 8.898 ACRES TRACT E

Lying in Section 34, Town 4, Range 13, Miami Township, Logan County, Ohio.

Being out of the Roger C. Eckart and Patricia L. Eckart 32.104 acre tract as deeded and described in Official Record 431, Page 486 of the Logan County Records of Deeds and being more particularly described as follows:

Beginning at a 1 inch iron rod found at the northeast corner of the southeast quarter of Section 34 on the east line of Miami Township at the point of intersection station 40+45.1 (Logan County Engineers' Field Book 700, Page 3) of County Highway 62.

THENCE, with the east lines of Section 34 and Miami Township and the center-line of County Highway 62, (60 feet wide), S 4°-58'-21" W, a distance of 605.58 feet to a MAG nail set.

THENCE, N 85°-00'-43" W, a distance of 639.98 feet to a 5/8 inch iron rod set, passing a 5/8 inch iron rod set at 30.00 feet.

THENCE, N 4°-58'-14" E, a distance of 605.69 feet to a MAG nail set, passing a 5/8 inch iron rod set at 575.69 feet.

THENCE, with the north line of the southeast quarter of Section 34 and the center-line of County Highway 62, S 85°-00'-06" E, a distance of 640.00 feet to the point of beginning.

Containing 8.898 acres of which 0.797 acre is within the highway right-of-way.

The basis for bearings is the east line of Section 34, being S 4°-58'-21" W, and all other bearings are from angles and distances measured in a field survey by Lee Surveying and Mapping Co., Inc. on November 26, 1999.

Description prepared by:

A handwritten signature in black ink, appearing to read 'Jeffrey I. Lee', is written over the typed name and title.

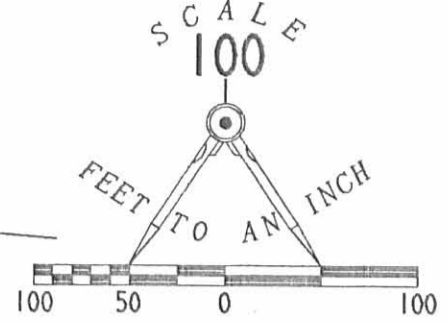
Jeffrey I. Lee  
Professional Surveyor 6359  
November 30, 1999



ORIGINAL STAMP IN GREEN  
L-2848

4957 4D-5

STA. 40+45.1  
LOGAN COUNTY ENGINEERS'  
FIELD BOOK 700, PAGE. 3



LEGEND

- 5/8 INCH IRON ROD SET
- 5/8 INCH IRON ROD FOUND
- ⊙ MAG NAIL SET
- ⊗ MAG NAIL FOUND
- ⊕ 1 INCH IRON ROD FOUND
- ⊠ CONCRETE RIGHT-OF-WAY MONUMENT FOUND

KERRY L. SNAPP AND  
JOYCE C. SNAPP  
23.976 ACRES  
O.R. 363, PG. 957

TRACT D  
4.014 ACRES  
OF WHICH 0.199 ACRE IS WITHIN  
THE HIGHWAY RIGHT-OF-WAY

TRACT E  
8.898 ACRES  
OF WHICH 0.797 ACRE IS WITHIN  
THE HIGHWAY RIGHT-OF-WAY

TRACT C  
6.396 ACRES  
OF WHICH 0.207 ACRE IS WITHIN  
THE HIGHWAY RIGHT-OF-WAY

TRACT B  
6.396 ACRES  
OF WHICH 0.207 ACRE IS WITHIN  
THE HIGHWAY RIGHT-OF-WAY

TRACT A  
6.396 ACRES  
OF WHICH 0.207 ACRE IS WITHIN  
THE HIGHWAY RIGHT-OF-WAY

SCOTT C. HEPNER  
13.000 ACRES  
O.R. 426, PG. 361

SURVEY OF FIVE TRACTS OUT OF  
THE ROGER C. ECKART AND  
PATRICIA L. ECKART  
32.104 ACRE TRACT  
OFFICIAL RECORD 431, PAGE 486  
SECTION 34, TOWN 4, RANGE 13  
MIAMI TOWNSHIP  
LOGAN COUNTY, OHIO



SURVEYED BY:

JEFFREY I. LEE  
PROFESSIONAL SURVEYOR 6359  
NOVEMBER 26, 1999  
COPYRIGHT 1999 BY:  
LEE SURVEYING & MAPPING CO., INC.  
117 North Madriver Street  
BELLEFONTAINE, OHIO 43311  
(937) 593-7335

D 365 RECKART

L-2848-2

2 WORKING DAYS  
BEFORE YOU DIG  
CALL TOLL FREE 800-362-2764  
OHIO UTILITIES PROTECTION SERVICE.