

FB 685

Survey C.H. #65 - Miami Twp.

- (36+00) Hubs set
- (34+00) Hubs set
- (31+00) Hubs set
- (27+33.65) Hubs set
- (26+29.0) Hubs set

- o - Wood post
- - Stone
- o - Hub
- △ - RR spike

Curve Staked to fit existing gravel

PI 27+02.0
 PC 26+29.0
 PT 27+33.65
 T = 73.0'
 Δ = 89°-28'-40"
 R = 73.66
 D = 85°-30'
 L = 109.65'

- (20+00) Hubs set
- (16+00) Hubs set

Note: - R/W Monuments set - August 1950.

- (10+00) Hubs set
- (6+50) Hubs set

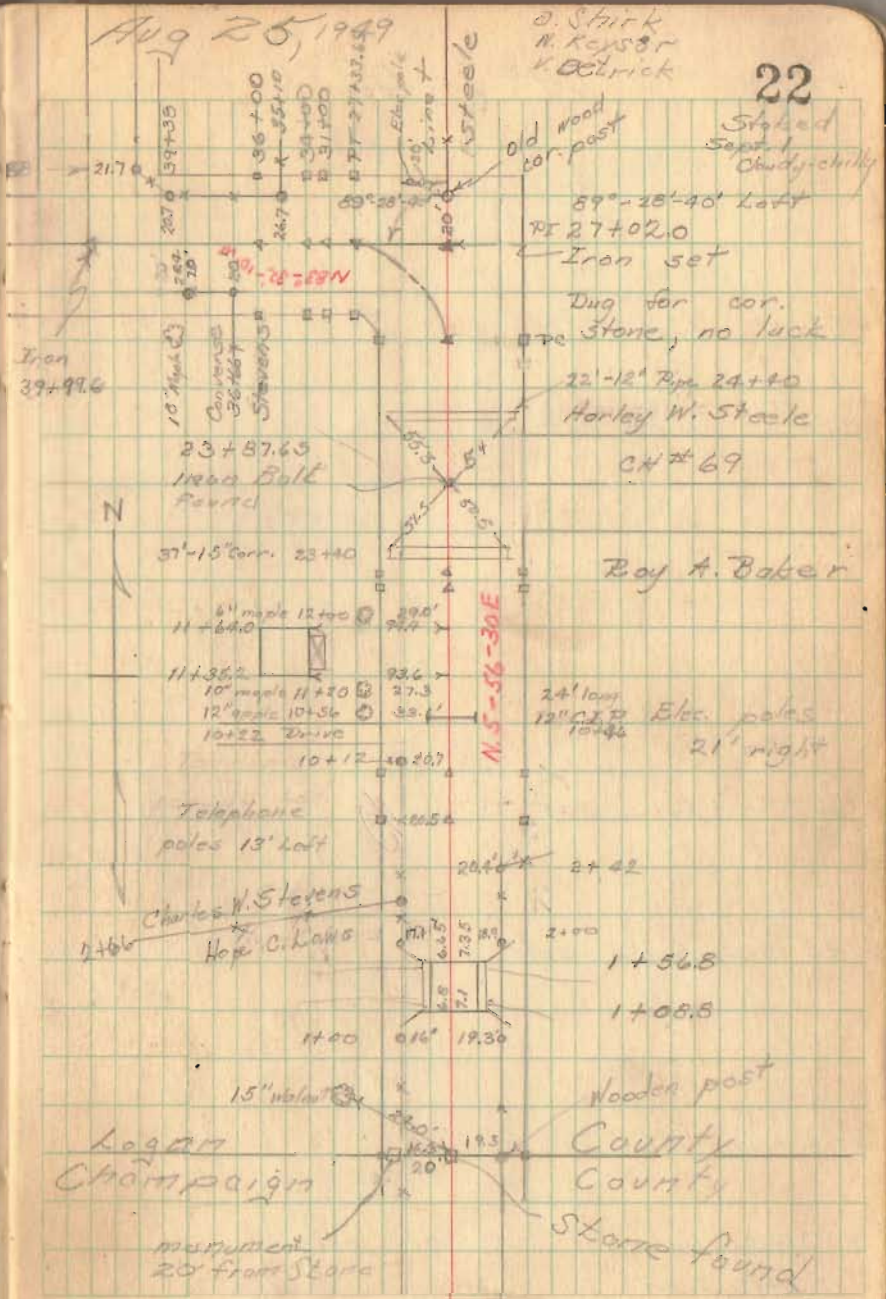
(4385)

- (0+00) Hubs set for 50' R/W Monuments

Aug 25, 1949

D. Strick
 N. Keysor
 K. Delrick

22



Staked Sept. 1 Chudy-chiky

89°-28'-40" Left

PI 27+02.0

Iron set

Dug for cor. Stone, no luck

22'-12" Pipe 24+10

Harley W. Steele

CH #69

Roy A. Baker

24' long 12" C.P.P. Etc. poles
 21' right

1+56.8

1+08.8

Wooden post

County County

Stone found

monument 20' from Stone

FB 685

CH# 65 (cont'd)

61+00 Hubs set

55+00 Hubs set

50+00 Hubs set

45+00 Hubs set

PT 40+31.2 Hubs set

PC 39+26.5 Hub set on right only

PI 39+99.6 In on

Sept. 2, 1949

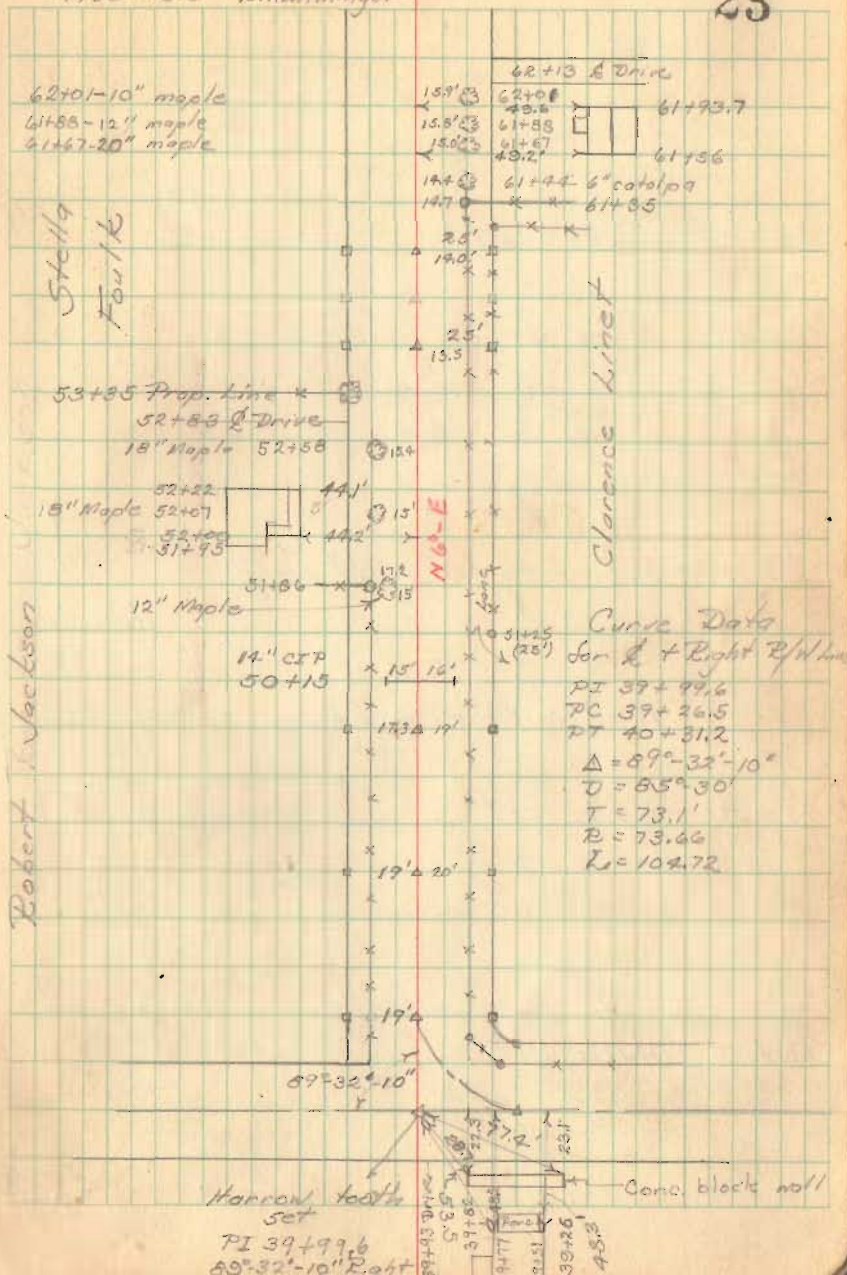
O. Kedson

D. Dedson D. Mitchell

V. Detrick R. Hemminger

Fair-Warning

23



FB 685

CH #65 (contd)

90+00 Hubs set

85+00 Hubs set

80+00 Hub set on right only

76+00 to 84+00 stakes set 35' left h.

75+00 Hubs set

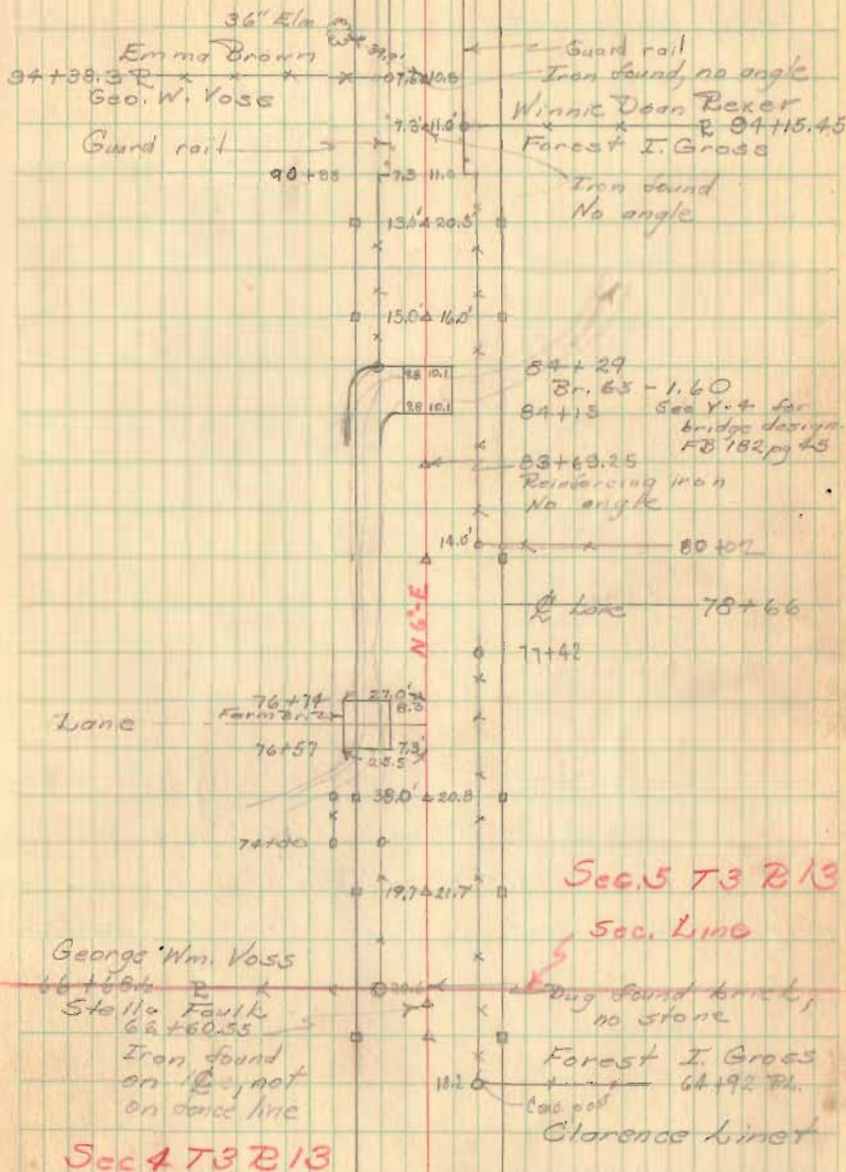
70+00 Hubs set

76+00

66+00 Hubs set

Sept. 13, 1949
Rain

24



FB 685

CH #65 (cont'd)

115+50 Hubs set

110+00 Hubs set

106+50 Hubs set

102 to 105 staked 40' but 100' R/W

101 to 105 ± 100' R/W around 2'

100+00 Hubs set

Sept. 14, 1949

25

