

Received 11-2-00 OKJH

Lee Surveying and Mapping Co., Inc.

Land Surveys • Topography • Subdivisions • Construction Layout

117 N. Madriver St.
Bellefontaine OH 43311



Phone: (937) 593-7335
Fax: (937) 593-7444

MEADE TRACT A 0.813 ACRE

Lying in Section 12, Town 3, Range 13, Miami Township, Logan County, Ohio.

Being out of the Steven L. Meade and Lori M. Meade 6.777 acre tract as deeded and described in Official Record 476, Page 419 of the Logan County Records of Deeds and being more particularly described as follows:

Beginning at a MAG nail set at the intersection of the west line of Section 12 and the center-line of County Highway 63.

THENCE, with the west line of Section 12 and the east line of the Arnold O. Thompson, Jr. 7.71 acre tract (O.R. 176, Pg. 788), N 0°-20'-12" E, a distance of 272.86 feet to a 5/8 inch iron rod set, passing a 5/8 inch iron rod set at 30.03 feet.

THENCE, with the south line of the C.C.C. & St. Louis Railroad 22.680 acre tract (Vol. 129, Pg. 390), N 80°-33'-39" E, a distance of 121.27 feet to a 5/8 inch iron rod set.

THENCE, S 2°-16'-49" E, a distance of 287.69 feet to a MAG nail set, passing a 5/8 inch iron rod set at 257.69 feet.

THENCE, with the center-line of County Highway 63, S 87°-43'-11" W, a distance of 132.79 feet to the place of beginning.


Containing 0.813 acre of which 0.091 acre is within the highway right-of-way.

The basis for bearings is the center-line of County Highway 63 west of County Highway 64 being N 82°-16'-00" W, and all other bearings are from angles and distances measured in a field survey by Lee Surveying and Mapping Co., Inc. on October 30, 2000.

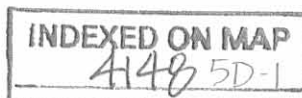
Description prepared by:



ORIGINAL STAMP IN GREEN


Jeffrey I. Lee
Professional Surveyor 6359
November 6, 2000

L-3010



Lee Surveying and Mapping Co., Inc.

Land Surveys • Topography • Subdivisions • Construction Layout

117 N. Madriver St.
Bellefontaine OH 43311



Phone: (937) 593-7335
Fax: (937) 593-7444

MEADE TRACT N 1.199 ACRES

Lying in Section 12, Town 3, Range 13, Miami Township, Logan County, Ohio.

Being out of the Steven L. Meade and Lori M. Meade 5.286 acre tract as deeded and described in Official Record 476, Page 421 of the Logan County Records of Deeds and being more particularly described as follows:

Beginning at a MAG nail set at the intersection of the west line of Section 12 and the center-line of County Highway 63.

THENCE, with the center-line of County Highway 63 (60 feet wide), N 87°-43'-11" E, a distance of 1332.79 feet to a MAG nail set at the TRUE POINT OF BEGINNING.

THENCE, N 2°-16'-49" W, a distance of 296.74 feet to a 5/8 inch iron rod set, passing a 5/8 inch iron rod set at 30.00 feet.

THENCE, with the south line of the remainder of the Steven L. Meade original 38.459 acre tract (O.R. 459, Pg. 821, Tract I), N 87°-43'-11" E, a distance of 105.87 feet to a point, passing a 5/8 inch iron rod set at 100.87 feet.

THENCE, with the south line of the remainder of the said 38.459, S 82°-16'-00" E, a distance of 96.12 feet to a 5/8 inch iron rod set, passing a 5/8 inch iron rod set at 5.00 feet.

THENCE, S 7°-44'-00" W, a distance of 296.74 feet to a MAG nail set, passing a 5/8 inch iron rod set at 266.74 feet.

THENCE, with the center-line of County Highway 63, N 82°-16'-00" W, a distance of 70.13 feet to a railroad spike found.

THENCE, continuing with the center-line of County Highway 63, S 87°-43'-11" W, a distance of 79.87 feet to the place of beginning.

Containing 1.199 acres of which 0.105 acre is within the highway right-of-way.

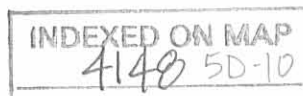
The basis for bearings is the center-line of County Highway 63 west of County Highway 64 being N 82°-16'-00" W, and all other bearings are from angles and distances measured in a field survey by Lee Surveying and Mapping Co., Inc. on October 30, 2000.

Description prepared by:


Jeffrey I. Lee
Professional Surveyor 6359
November 6, 2000



L-3010



Lee Surveying and Mapping Co., Inc.

Land Surveys • Topography • Subdivisions • Construction Layout

117 N. Madriver St.
Bellefontaine OH 43311



Phone: (937) 593-7335
Fax: (937) 593-7444

MEADE TRACT P 1.022 ACRES

Lying in Section 12, Town 3, Range 13, Miami Township, Logan County, Ohio.

Being out of the Steven L. Meade and Lori M. Meade 5.286 acre tract as deeded and described in Official Record 476, Page 421 of the Logan County Records of Deeds and being more particularly described as follows:

Beginning at a MAG nail set at the intersection of the west line of Section 12 and the center-line of County Highway 63.

THENCE, with the center-line of County Highway 63 (60 feet wide), N 87°-43'-11" E, a distance of 1412.66 feet to a railroad spike found.

THENCE, continuing with the center-line of County Highway 63, S 82°-16'-00" E, a distance of 70.13 feet to a MAG nail set at the TRUE POINT OF BEGINNING.

THENCE, N 7°-44'-00" E, a distance of 296.74 feet to a 5/8 inch iron rod set, passing a 5/8 inch iron rod set at 30.00 feet.

THENCE, with the south line of the remainder of the Steven L. Meade original 38.459 acre tract (O.R. 459, Pg. 821, Tract I), S 82°-16'-00" E, a distance of 150.00 feet to a 5/8 inch iron rod set.

THENCE, with a west line of the remainder of the said 38.459 acre tract, S 7°-44'-00" W, a distance of 296.74 feet to a MAG nail set, passing a 5/8 inch iron rod set at 266.74 feet.

THENCE, with the center-line of County Highway 63, N 82°-16'-00" W, a distance of 150.00 feet to the point of beginning.

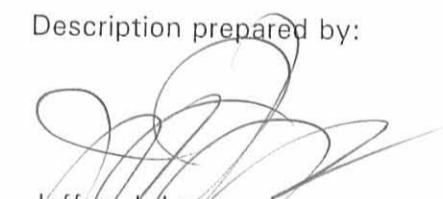
Containing 1.022 acres of which 0.103 acre is within the highway right-of-way.

The basis for bearings is the center-line of County Highway 63 west of County Highway 64 being N 82°-16'-00" W, and all other bearings are from angles and distances measured in a field survey by Lee Surveying and Mapping Co., Inc. on October 30, 2000.

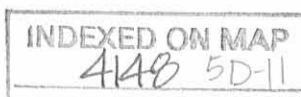
Description prepared by:



ORIGINAL STAMP IN GREEN


Jeffrey I. Lee
Professional Surveyor 6359
November 6, 2000

L-3010



Lee Surveying and Mapping Co., Inc.

Land Surveys • Topography • Subdivisions • Construction Layout

117 N. Madriver St.
Bellefontaine OH 43311



Phone: (937) 593-7335
Fax: (937) 593-7444

MEADE TRACT Q 11.281 ACRES

Lying in Section 12, Town 3, Range 13, Miami Township, Logan County, Ohio.

Being out of the Steven L. Meade and Lori M. Meade original 38.459 acre tract as deeded and described in Official Record 459, Page 821, Tract I of the Logan County Records of Deeds and being more particularly described as follows:

Beginning at a 5/8 inch iron rod found at the intersection of the center-lines of County Highway 63 and County Highway 64.

THENCE, with the center-line of County Highway 63 (60 feet wide), N 82°-16'-00" W, a distance of 1099.28 feet to a MAG nail found at the TRUE POINT OF BEGINNING.

THENCE, continuing with the center-line of County Highway 63, N 82°-16'-00" W, a distance of 60.00 feet to a MAG nail set.

THENCE, with the lines of the Steven L. Meade 5.286 acre tract (O.R. 476, Pg. 421), the following three (3) courses:

N 7°-44'-00" E, a distance of 296.74 feet to a 5/8 inch iron rod set, passing a 5/8 inch iron rod set at 30.00 feet.

N 82°-16'-00" W, a distance of 246.12 feet to a point, passing a 5/8 inch iron rod set at 241.12 feet.

S 87°-43'-11" W, a distance of 555.87 feet to a 5/8 inch iron rod set, passing a 5/8 inch iron rod set at 5.00 feet.

THENCE, with the east line of the Steven L. Meade 6.777 acre tract (O.R. 476, Pg. 419), N 2°-16'-49" W, a distance of 120.86 feet to a 5/8 inch iron rod set.

THENCE, with the south line of the C.C.C. & St. Louis Railroad 22.680 acre tract (Vol. 129, Pg. 390), a curve to the left having a central angle of 9°-44'-39", a radius of 7823.25 feet, an arc length of 1330.50 feet, and having a chord bearing N 70°-13'-59" E, a distance of 1328.89 feet to a 5 inch square concrete post found.

THENCE, S 3°-17'-53" E, a distance of 797.60 feet to a 5/8 inch iron rod found.

THENCE, with the lines of the Gary Goings 1.001 acre tract (O.R. 448, Pg. 149), the following two (2) courses:

N 82°-08'-11" W, a distance of 67.21 feet to a 5/8 inch iron rod found.

N 73°-03'-25" W, a distance of 212.73 feet to a 5/8 inch iron rod found.

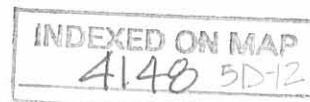
THENCE, with the lines of the Boyd David Manning 1.055 acre tract (O.R. 468, Pg. 882, Tract I), the following five courses:

N 7°-44'-00" E, a distance of 64.47 feet to a 5/8 inch iron rod found.

N 82°-16'-00" W, a distance of 48.78 feet to a 5/8 inch iron rod found.

N 86°-52'-27" W, a distance of 36.46 feet to a 5/8 inch iron rod found.

N 82°-16'-00" W, a distance of 94.50 feet to a 5/8 inch iron rod found.



Lee Surveying and Mapping Co., Inc.

Land Surveys • Topography • Subdivisions • Construction Layout

117 N. Madriver St.
Bellefontaine OH 43311



Phone: (937) 593-7335
Fax: (937) 593-7444

S 7°-44'-00" W, a distance of 245.60 feet to the point of beginning, passing a 5/8 inch iron rod found at 215.60 feet.

Containing 11.281 acres of which 0.041 acre is within the highway right-of-way.

The basis for bearings is the center-line of County Highway 63 west of County Highway 64 being N 82°-16'-00" W, and all other bearings are from angles and distances measured in a field survey by Lee Surveying and Mapping Co., Inc. on October 30, 2000.



ORIGINAL STAMP IN GREEN

Description prepared by:

A handwritten signature in black ink, appearing to read 'J. Lee', written over the typed name and title.

Jeffrey I. Lee
Professional Surveyor 6359
November 6, 2000

L-3010

INDEXED ON MAP
4148 5D-13

Lee Surveying and Mapping Co., Inc.

Land Surveys • Topography • Subdivisions • Construction Layout

117 N. Madriver St.
Bellefontaine OH 43311



Phone: (937) 593-7335
Fax: (937) 593-7444

MEADE TRACT R 10.549 ACRES

Lying in Section 12, Town 3, Range 13, Miami Township, Logan County, Ohio.

Being out of the Steven L. Meade and Lori M. Meade original 38.459 acre tract as deeded and described in Official Record 459, Page 821, Tract I of the Logan County Records of Deeds and being more particularly described as follows:

Beginning at a 5/8 inch iron rod found at the intersection of the center-lines of County Highway 63 and County Highway 64.

THENCE, with the center-line of County Highway 63 (60 feet wide), N 82°-16'-00" W, a distance of 389.79 feet to a railroad spike found at the TRUE POINT OF BEGINNING.

THENCE, continuing with the center-line of County Highway 63, N 82°-16'-00" W, a distance of 252.67 feet to a railroad spike found.

THENCE, with the east line of the Gary Goings 1.001 acre tract (O.R. 448, Pg. 149), N 7°-43'-59" E, a distance of 149.86 feet to a 5/8 inch iron rod found, passing a 5/8 inch iron rod found at 30.00 feet.

THENCE, N 3°-17'-53" W, a distance of 797.60 feet to a 5 inch square concrete post found.

THENCE, with the southerly line of C.C.C. & St. Louis Railroad 22.680 acre tract (Vol. 129, Pg. 390), N 16°-52'-33" W, a distance of 55.51 feet to a 5 inch square concrete post found.

THENCE, continuing with the C.C.C. & St. Louis Railroad tract, a curve to the left with a central angle of 2°-35'-24", a radius of 7768.25 feet, an arc length of 351.14 feet, a tangent of 175.60 feet, a chord length of 351.11 feet and a chord bearing N 64°-00'-39" E, to a point, passing a 5/8 inch iron rod set at a chord length of 343.54 feet.

THENCE, with the west line of the J. Malcolm Meade 108.00 acre tract (Vol. 282, Pg. 29), S 19°-07'-49" E, a distance of 993.26 feet to a 1-1/2 inch iron pipe found.

THENCE, with the lines of the William L. Weiskittle 2.28 acre tract (O.R. 31, Pg. 327), the following three courses:

N 81°-39'-19" W, a distance of 200.00 feet to a 1 inch iron pipe found.

S 43°-33'-01" W, a distance of 138.80 feet to a point in water.

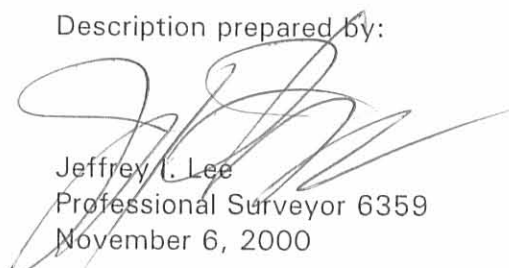
S 17°-29'-25" W, a distance of 184.30 feet to the place of beginning.

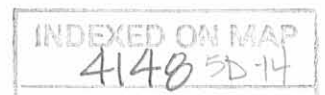
Containing 10.549 acres of which 0.176 acre is within the highway right-of-way.

The basis for bearings is the center-line of County Highway 63 west of County Highway 64 being N 82°-16'-00" W, and all other bearings are from angles and distances measured in a field survey by Lee Surveying and Mapping Co., Inc. on October 30, 2000.

Description prepared by:




Jeffrey T. Lee
Professional Surveyor 6359
November 6, 2000



Lee Surveying and Mapping Co., Inc.

Land Surveys • Topography • Subdivisions • Construction Layout

117 N. Madriver St.
Bellefontaine OH 43311



Phone: (937) 593-7335
Fax: (937) 593-7444

MEADE TRACT E 1.024 ACRES

Lying in Section 12, Town 3, Range 13, Miami Township, Logan County, Ohio.

Being out of the Steven L. Meade and Lori M. Meade 6.777 acre tract as deeded and described in Official Record 476, Page 419 of the Logan County Records of Deeds and being more particularly described as follows:

Beginning at a MAG nail set at the intersection of the west line of Section 12 and the center-line of County Highway 63.

THENCE, with the center-line of County Highway 63 (60 feet wide), N 87°-43'-11" E, a distance of 132.79 feet to a MAG nail set at the TRUE POINT OF BEGINNING.

THENCE, N 2°-16'-49" W, a distance of 287.69 feet to a 5/8 inch iron rod set, passing a 5/8 inch iron rod set at 30.00 feet.

THENCE, with the south line of the C.C.C. & St. Louis Railroad 22.680 acre tract (Vol. 129, Pg. 390), N 80°-33'-39" E, a distance of 16.56 feet to a 5/8 inch iron rod set.

THENCE, with the south line of the said 22.680 acre tract, a curve to the left having a central angle of 0°-59'-13", a radius of 7823.25 feet, an arc length of 134.77 feet and having a chord bearing N 80°-04'-02" E, a distance of 134.77 feet to a 5/8 inch iron rod set.

THENCE, S 2°-16'-49" E, a distance of 307.70 feet to a MAG nail set, passing a 5/8 inch iron rod set at 277.70 feet.

THENCE, with the center-line of County Highway 63, S 87°-43'-11" W, a distance of 150.00 feet to the place of beginning.

Containing 1.024 acre of which 0.103 acre is within the highway right-of-way.

The basis for bearings is the center-line of County Highway 63 west of County Highway 64 being N 82°-16'-00" W, and all other bearings are from angles and distances measured in a field survey by Lee Surveying and Mapping Co., Inc. on October 30, 2000.



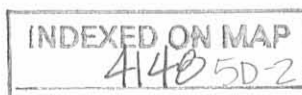
ORIGINAL STAMP IN GREEN

Description prepared by:

A handwritten signature in black ink, appearing to read 'Jeffrey I. Lee'.

Jeffrey I. Lee
Professional Surveyor 6359
November 6, 2000

L-3010



Lee Surveying and Mapping Co., Inc.

Land Surveys • Topography • Subdivisions • Construction Layout

117 N. Madriver St.
Bellefontaine OH 43311



Phone: (937) 593-7335
Fax: (937) 593-7444

MEADE TRACT F 1.098 ACRES

Lying in Section 12, Town 3, Range 13, Miami Township, Logan County, Ohio.

Being out of the Steven L. Meade and Lori M. Meade 6.777 acre tract as deeded and described in Official Record 476, Page 419 of the Logan County Records of Deeds and being more particularly described as follows:

Beginning at a MAG nail set at the intersection of the west line of Section 12 and the center-line of County Highway 63.

THENCE, with the center-line of County Highway 63 (60 feet wide), N 87°-43'-11" E, a distance of 282.79 feet to a MAG nail set at the TRUE POINT OF BEGINNING.

THENCE, N 2°-16'-49" W, a distance of 307.70 feet to a 5/8 inch iron rod set, passing a 5/8 inch iron rod set at 30.00 feet.

THENCE, with the south line of the C.C.C. & St. Louis Railroad 22.680 acre tract (Vol. 129, Pg. 390), a curve to the left having a central angle of 1°-06'-41", a radius of 7823.25 feet, an arc length of 151.75 feet and having a chord bearing N 79°-01'-05" E, a distance of 151.75 feet to a 5/8 inch iron rod set.

THENCE, S 2°-16'-49" E, a distance of 330.66 feet to a MAG nail set, passing a 5/8 inch iron rod set at 300.66 feet.

THENCE, with the center-line of County Highway 63, S 87°-43'-11" W, a distance of 150.00 feet to the place of beginning.


Containing 1.098 acre of which 0.103 acre is within the highway right-of-way.

The basis for bearings is the center-line of County Highway 63 west of County Highway 64 being N 82°-16'-00" W, and all other bearings are from angles and distances measured in a field survey by Lee Surveying and Mapping Co., Inc. on October 30, 2000.

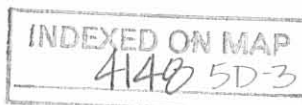
Description prepared by:



ORIGINAL STAMP IN GREEN


Jeffrey I. Lee
Professional Surveyor 6359
November 6, 2000

L-3010



Lee Surveying and Mapping Co., Inc.

Land Surveys • Topography • Subdivisions • Construction Layout

117 N. Madriver St.
Bellefontaine OH 43311



Phone: (937) 593-7335
Fax: (937) 593-7444

MEADE TRACT G 1.182 ACRES

Lying in Section 12, Town 3, Range 13, Miami Township, Logan County, Ohio.

Being out of the Steven L. Meade and Lori M. Meade 6.777 acre tract as deeded and described in Official Record 476, Page 419 of the Logan County Records of Deeds and being more particularly described as follows:

Beginning at a MAG nail set at the intersection of the west line of Section 12 and the center-line of County Highway 63.

THENCE, with the center-line of County Highway 63 (60 feet wide), N 87°-43'-11" E, a distance of 432.79 feet to a MAG nail set at the TRUE POINT OF BEGINNING.

THENCE, N 2°-16'-49" W, a distance of 330.66 feet to a 5/8 inch iron rod set, passing a 5/8 inch iron rod set at 30.00 feet.

THENCE, with the south line of the C.C.C. & St. Louis Railroad 22.680 acre tract (Vol. 129, Pg. 390), a curve to the left having a central angle of 1°-06'-54", a radius of 7823.25 feet, an arc length of 152.23 feet and having a chord bearing N 77°-54'-18" E, a distance of 152.23 feet to a 5/8 inch iron rod set.

THENCE, S 2°-16'-49" E, a distance of 356.60 feet to a MAG nail set, passing a 5/8 inch iron rod set at 326.60 feet.

THENCE, with the center-line of County Highway 63, S 87°-43'-11" W, a distance of 150.00 feet to the place of beginning.

Containing 1.182 acre of which 0.103 acre is within the highway right-of-way.

The basis for bearings is the center-line of County Highway 63 west of County Highway 64 being N 82°-16'-00" W, and all other bearings are from angles and distances measured in a field survey by Lee Surveying and Mapping Co., Inc. on October 30, 2000.

Description prepared by:

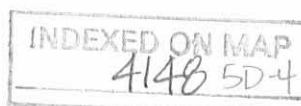


ORIGINAL STAMP IN GREEN

A handwritten signature in black ink, appearing to read 'Jeffrey I. Lee'.

Jeffrey I. Lee
Professional Surveyor 6359
November 6, 2000

L-3010



Lee Surveying and Mapping Co., Inc.

Land Surveys • Topography • Subdivisions • Construction Layout

117 N. Madriver St.
Bellefontaine OH 43311



Phone: (937) 593-7335
Fax: (937) 593-7444

MEADE TRACT H 1.277 ACRES

Lying in Section 12, Town 3, Range 13, Miami Township, Logan County, Ohio.

Being out of the Steven L. Meade and Lori M. Meade 6.777 acre tract as deeded and described in Official Record 476, Page 419 of the Logan County Records of Deeds and being more particularly described as follows:

Beginning at a MAG nail set at the intersection of the west line of Section 12 and the center-line of County Highway 63.

THENCE, with the center-line of County Highway 63 (60 feet wide), N 87°-43'-11" E, a distance of 582.79 feet to a MAG nail set at the TRUE POINT OF BEGINNING.

THENCE, N 2°-16'-49" W, a distance of 356.60 feet to a 5/8 inch iron rod set, passing a 5/8 inch iron rod set at 30.00 feet.

THENCE, with the south line of the C.C.C. & St. Louis Railroad 22.680 acre tract (Vol. 129, Pg. 390), a curve to the left having a central angle of 1°-07'-08", a radius of 7823.25 feet, an arc length of 152.77 feet and having a chord bearing N 76°-47'-17" E, a distance of 152.77 feet to a 5/8 inch iron rod set.

THENCE, S 2°-16'-49" E, a distance of 385.58 feet to a MAG nail set, passing a 5/8 inch iron rod set at 355.58 feet.

THENCE, with the center-line of County Highway 63, S 87°-43'-11" W, a distance of 150.00 feet to the place of beginning.

Containing 1.277 acre of which 0.103 acre is within the highway right-of-way.

The basis for bearings is the center-line of County Highway 63 west of County Highway 64 being N 82°-16'-00" W, and all other bearings are from angles and distances measured in a field survey by Lee Surveying and Mapping Co., Inc. on October 30, 2000.



ORIGINAL STAMP IN GREEN

Description prepared by:

A handwritten signature in black ink, appearing to read 'Jeffrey I. Lee', written over a light blue background.

Jeffrey I. Lee
Professional Surveyor 6359
November 6, 2000

L-3010



Lee Surveying and Mapping Co., Inc.

Land Surveys • Topography • Subdivisions • Construction Layout

117 N. Madriver St.
Bellefontaine OH 43311



Phone: (937) 593-7335
Fax: (937) 593-7444

MEADE TRACT J 1.382 ACRES

Lying in Section 12, Town 3, Range 13, Miami Township, Logan County, Ohio.

Being out of the Steven L. Meade and Lori M. Meade 6.777 acre tract as deeded and described in Official Record 476, Page 419 of the Logan County Records of Deeds and being more particularly described as follows:

Beginning at a MAG nail set at the intersection of the west line of Section 12 and the center-line of County Highway 63.

THENCE, with the center-line of County Highway 63 (60 feet wide), N 87°-43'-11" E, a distance of 732.79 feet to a MAG nail set at the TRUE POINT OF BEGINNING.

THENCE, N 2°-16'-49" W, a distance of 385.58 feet to a 5/8 inch iron rod set, passing a 5/8 inch iron rod set at 30.00 feet.

THENCE, with the south line of the C.C.C. & St. Louis Railroad 22.680 acre tract (Vol. 129, Pg. 390), a curve to the left having a central angle of 1°-07'-24", a radius of 7823.25 feet, an arc length of 153.38 feet and having a chord bearing N 75°-40'-01" E, a distance of 153.38 feet to a 5/8 inch iron rod set.

THENCE, with the west line of the remainder of the Steven L. Meade original 38.459 acre tract (O.R. 459, Pg. 821, Tract I) and the Steven L. Meade 5.286 acre tract (O.R. 476, Pg. 421), S 2°-16'-49" E, a distance of 417.60 feet to a MAG nail set, passing a 5/8 inch iron rod set at 387.60 feet.

THENCE, with the center-line of County Highway 63, S 87°-43'-11" W, a distance of 150.00 feet to the place of beginning.

Containing 1.382 acre of which 0.103 acre is within the highway right-of-way.

The basis for bearings is the center-line of County Highway 63 west of County Highway 64 being N 82°-16'-00" W, and all other bearings are from angles and distances measured in a field survey by Lee Surveying and Mapping Co., Inc. on October 30, 2000.



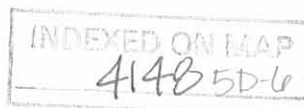
ORIGINAL STAMP IN GREEN

Description prepared by:

A handwritten signature in black ink, appearing to read 'Jeffrey I. Lee'.

Jeffrey I. Lee
Professional Surveyor 6359
November 6, 2000

L-3010



Lee Surveying and Mapping Co., Inc.

Land Surveys • Topography • Subdivisions • Construction Layout

117 N. Madriver St.
Bellefontaine OH 43311



Phone: (937) 593-7335
Fax: (937) 593-7444

MEADE TRACT K 1.022 ACRES

Lying in Section 12, Town 3, Range 13, Miami Township, Logan County, Ohio.

Being out of the Steven L. Meade and Lori M. Meade 5.286 acre tract as deeded and described in Official Record 476, Page 421 of the Logan County Records of Deeds and being more particularly described as follows:

Beginning at a MAG nail set at the intersection of the west line of Section 12 and the center-line of County Highway 63.

THENCE, with the center-line of County Highway 63 (60 feet wide), N 87°-43'-11" E, a distance of 882.79 feet to a MAG nail set at the TRUE POINT OF BEGINNING.

THENCE, with the east line of the Steven L. Meade 6.777 acre tract (O.R. 476, Pg. 419), N 2°-16'-49" W, a distance of 296.74 feet to a 5/8 inch iron rod set, passing a 5/8 inch iron rod set at 30.00 feet.

THENCE, with the south line of the remainder of the Steven L. Meade original 38.459 acre tract (O.R. 459, Pg. 821, Tract I), N 87°-43'-11" E, a distance of 150.00 feet to a 5/8 inch iron rod set.

THENCE, S 2°-16'-49" E, a distance of 296.74 feet to a MAG nail set, passing a 5/8 inch iron rod set at 266.74 feet.

THENCE, with the center-line of County Highway 63, S 87°-43'-11" W, a distance of 150.00 feet to the place of beginning.

Containing 1.022 acres of which 0.103 acre is within the highway right-of-way.

The basis for bearings is the center-line of County Highway 63 west of County Highway 64 being N 82°-16'-00" W, and all other bearings are from angles and distances measured in a field survey by Lee Surveying and Mapping Co., Inc. on October 30, 2000.

Description prepared by:

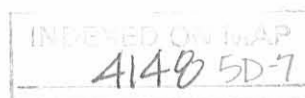


ORIGINAL STAMP IN GREEN

A handwritten signature in black ink, appearing to read 'Jeffrey I. Lee', written over a faint circular stamp.

Jeffrey I. Lee
Professional Surveyor 6359
November 6, 2000

L-3010



Lee Surveying and Mapping Co., Inc.

Land Surveys • Topography • Subdivisions • Construction Layout

117 N. Madriver St.
Bellefontaine OH 43311



Phone: (937) 593-7335
Fax: (937) 593-7444

MEADE TRACT L 1.022 ACRES

Lying in Section 12, Town 3, Range 13, Miami Township, Logan County, Ohio.

Being out of the Steven L. Meade and Lori M. Meade 5.286 acre tract as deeded and described in Official Record 476, Page 421 of the Logan County Records of Deeds and being more particularly described as follows:

Beginning at a MAG nail set at the intersection of the west line of Section 12 and the center-line of County Highway 63.

THENCE, with the center-line of County Highway 63 (60 feet wide), N 87°-43'-11" E, a distance of 1032.79 feet to a MAG nail set at the TRUE POINT OF BEGINNING.

THENCE, N 2°-16'-49" W, a distance of 296.74 feet to a 5/8 inch iron rod set, passing a 5/8 inch iron rod set at 30.00 feet.

THENCE, with the south line of the remainder of the Steven L. Meade original 38.459 acre tract (O.R. 459, Pg. 821, Tract I), N 87°-43'-11" E, a distance of 150.00 feet to a 5/8 inch iron rod set.

THENCE, S 2°-16'-49" E, a distance of 296.74 feet to a MAG nail set, passing a 5/8 inch iron rod set at 266.74 feet.

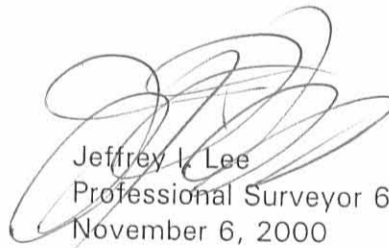
THENCE, with the center-line of County Highway 63, S 87°-43'-11" W, a distance of 150.00 feet to the place of beginning.

Containing 1.022 acres of which 0.103 acre is within the highway right-of-way.

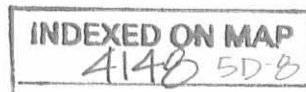
The basis for bearings is the center-line of County Highway 63 west of County Highway 64 being N 82°-16'-00" W, and all other bearings are from angles and distances measured in a field survey by Lee Surveying and Mapping Co., Inc. on October 30, 2000.

Description prepared by:




Jeffrey I. Lee
Professional Surveyor 6359
November 6, 2000

L-3010



Lee Surveying and Mapping Co., Inc.

Land Surveys • Topography • Subdivisions • Construction Layout

117 N. Madriver St.
Bellefontaine OH 43311



Phone: (937) 593-7335
Fax: (937) 593-7444

MEADE TRACT M 1.022 ACRES

Lying in Section 12, Town 3, Range 13, Miami Township, Logan County, Ohio.

Being out of the Steven L. Meade and Lori M. Meade 5.286 acre tract as deeded and described in Official Record 476, Page 421 of the Logan County Records of Deeds and being more particularly described as follows:

Beginning at a MAG nail set at the intersection of the west line of Section 12 and the center-line of County Highway 63.

THENCE, with the center-line of County Highway 63 (60 feet wide), N 87°-43'-11" E, a distance of 1182.79 feet to a MAG nail set at the TRUE POINT OF BEGINNING.

THENCE, N 2°-16'-49" W, a distance of 296.74 feet to a 5/8 inch iron rod set, passing a 5/8 inch iron rod set at 30.00 feet.

THENCE, with the south line of the remainder of the Steven L. Meade original 38.459 acre tract (O.R. 459, Pg. 821, Tract I), N 87°-43'-11" E, a distance of 150.00 feet to a 5/8 inch iron rod set.

THENCE, S 2°-16'-49" E, a distance of 296.74 feet to a MAG nail set, passing a 5/8 inch iron rod set at 266.74 feet.

THENCE, with the center-line of County Highway 63, S 87°-43'-11" W, a distance of 150.00 feet to the place of beginning.

Containing 1.022 acres of which 0.103 acre is within the highway right-of-way.

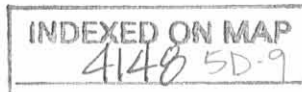
The basis for bearings is the center-line of County Highway 63 west of County Highway 64 being N 82°-16'-00" W, and all other bearings are from angles and distances measured in a field survey by Lee Surveying and Mapping Co., Inc. on October 30, 2000.

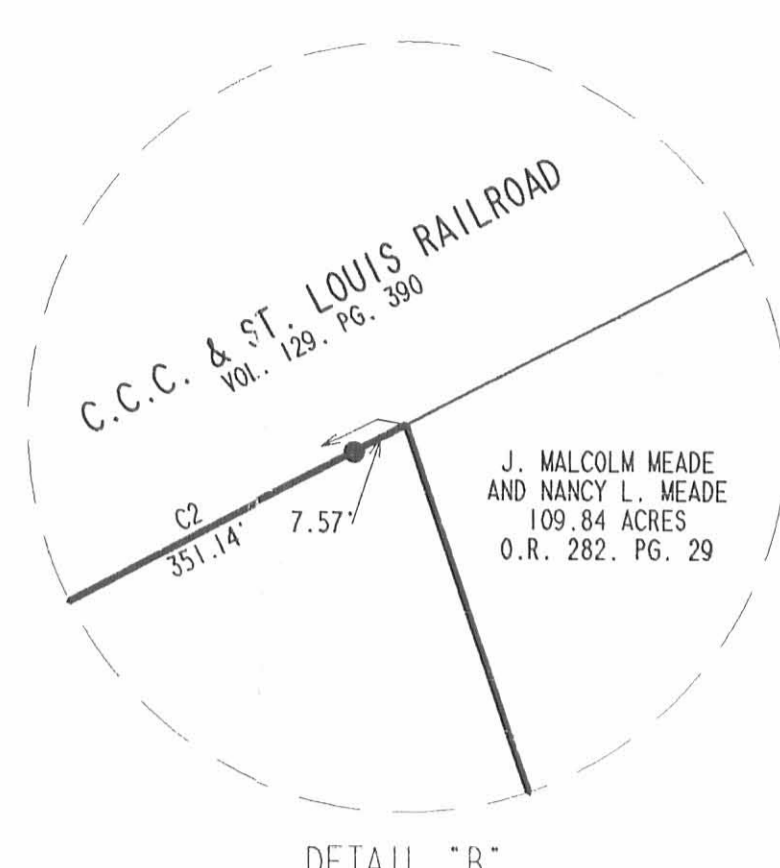
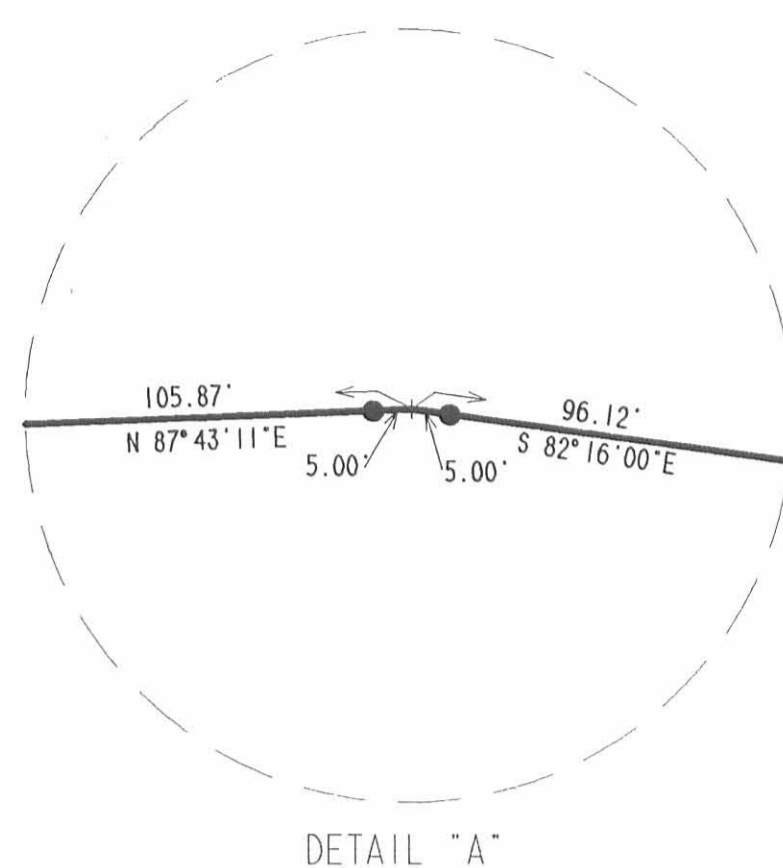


Description prepared by:

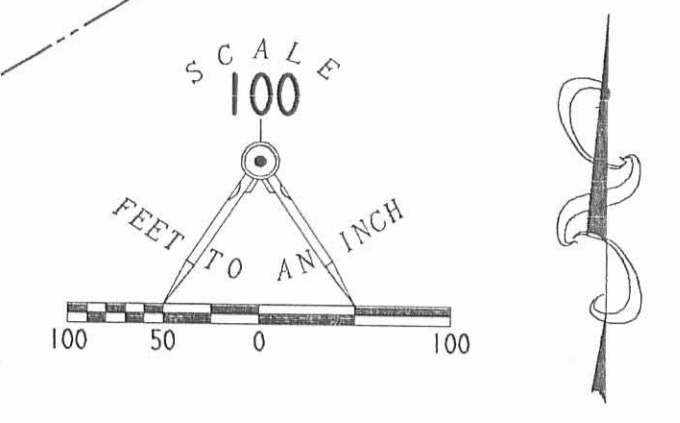
A handwritten signature in black ink, appearing to read 'Jeffrey J. Lee', is written over the typed name and title.
Jeffrey J. Lee
Professional Surveyor 6359
November 6, 2000

L-3010

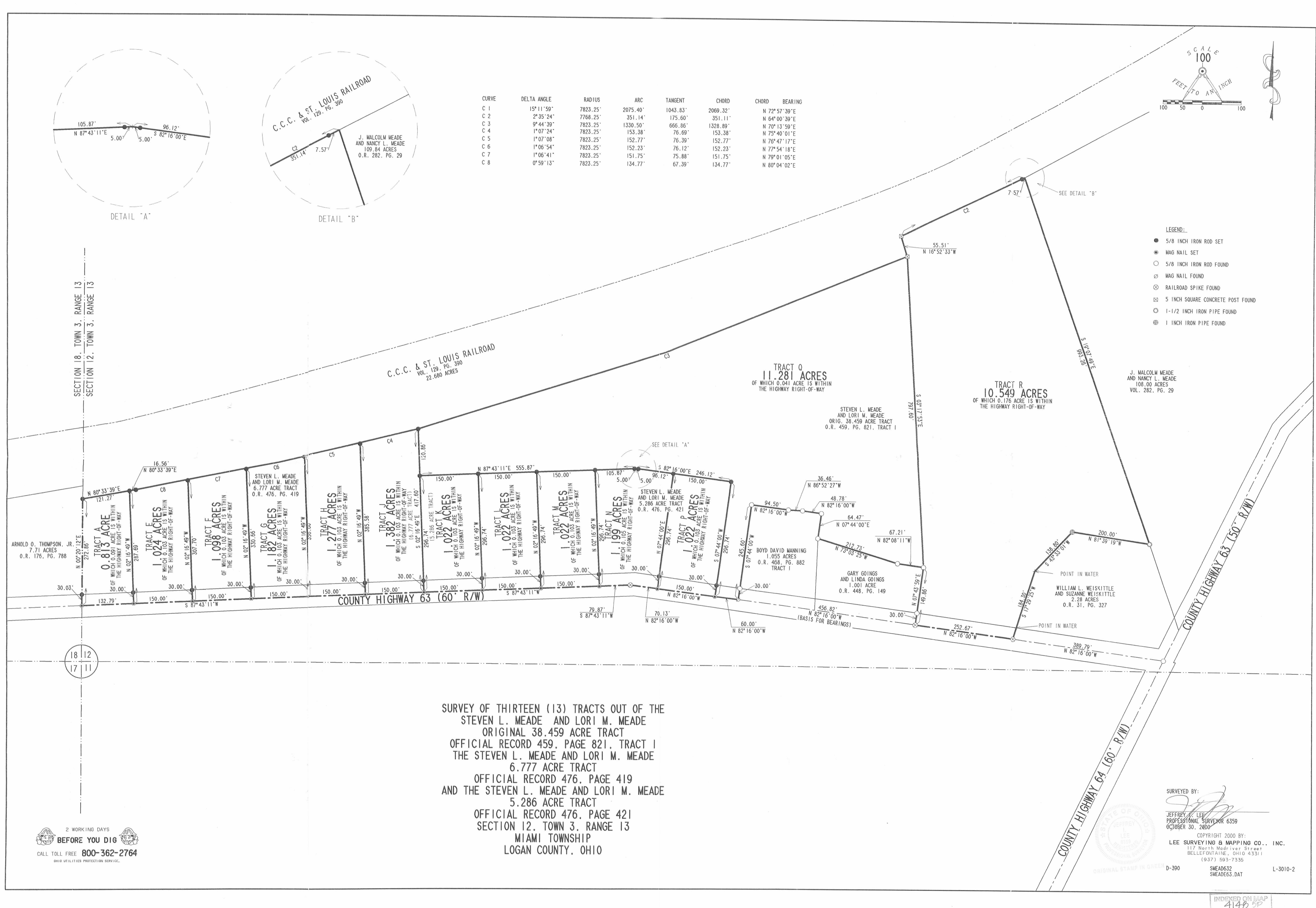




CURVE	DELTA ANGLE	RADIUS	ARC	TANGENT	CHORD	CHORD BEARING
C 1	15° 11' 59"	7823.25'	2075.40'	1043.83'	2069.32'	N 72° 57' 39" E
C 2	2° 35' 24"	7768.25'	351.14'	175.60'	351.11'	N 64° 00' 39" E
C 3	9° 44' 39"	7823.25'	1330.50'	666.86'	1328.89'	N 70° 13' 59" E
C 4	1° 07' 24"	7823.25'	153.38'	76.69'	153.38'	N 75° 40' 01" E
C 5	1° 07' 08"	7823.25'	152.77'	76.39'	152.77'	N 76° 47' 17" E
C 6	1° 06' 54"	7823.25'	152.23'	76.12'	152.23'	N 77° 54' 18" E
C 7	1° 06' 41"	7823.25'	151.75'	75.88'	151.75'	N 79° 01' 05" E
C 8	0° 59' 13"	7823.25'	134.77'	67.39'	134.77'	N 80° 04' 02" E



SECTION 18, TOWN 3, RANGE 13
SECTION 12, TOWN 3, RANGE 13



- LEGEND:
- 5/8 INCH IRON ROD SET
 - MAG NAIL SET
 - 5/8 INCH IRON ROD FOUND
 - ⊗ MAG NAIL FOUND
 - ⊗ RAILROAD SPIKE FOUND
 - ⊗ 5 INCH SQUARE CONCRETE POST FOUND
 - ⊗ 1-1/2 INCH IRON PIPE FOUND
 - ⊗ 1 INCH IRON PIPE FOUND

SURVEY OF THIRTEEN (13) TRACTS OUT OF THE
STEVEN L. MEADE AND LORI M. MEADE
ORIGINAL 38.459 ACRE TRACT
OFFICIAL RECORD 459, PAGE 821, TRACT I
THE STEVEN L. MEADE AND LORI M. MEADE
6.777 ACRE TRACT
OFFICIAL RECORD 476, PAGE 419
AND THE STEVEN L. MEADE AND LORI M. MEADE
5.286 ACRE TRACT
OFFICIAL RECORD 476, PAGE 421
SECTION 12, TOWN 3, RANGE 13
MIAMI TOWNSHIP
LOGAN COUNTY, OHIO

J. MALCOLM MEADE
AND NANCY L. MEADE
108.00 ACRES
VOL. 282, PG. 29

STEVEN L. MEADE
AND LORI M. MEADE
ORIG. 38.459 ACRE TRACT
O.R. 459, PG. 821, TRACT I

TRACT R
10.549 ACRES
OF WHICH 0.176 ACRE IS WITHIN
THE HIGHWAY RIGHT-OF-WAY

SURVEYED BY:
Jeffrey L. Lee
JEFFREY L. LEE
PROFESSIONAL SURVEYOR 6359
OCTOBER 30, 2000
COPYRIGHT 2000 BY:
LEE SURVEYING & MAPPING CO., INC.
117 North Madriver Street
BELLEFONTAINE, OHIO 43311
(937) 593-7335
D-390 SMEAD632 SMEAD63.DAT L-3010-2

2 WORKING DAYS
BEFORE YOU DIG
CALL TOLL FREE 800-362-2764
OHIO UTILITIES PROTECTION SERVICE.

INDEXED ON MAP
4140 5P

MEADE TO MEANS DESCRIPTION
(October, 1967)

Being situated in Section 12, Town 3, Range 13, in Miami Township, Logan County, Ohio.

Beginning at a point where the west line of Section 12 intersects the center line of County Road #63.

Thence with the said west line of Section 12 $N 0^{\circ}-35'E$ 274.6 feet to a concrete post in the south right of way line of C.C.C. & St. L. Railroad. (Said right of way line is 180.0 feet from the center of the main track).

Thence with said south right of way line $S 80^{\circ}-45'E$ 139.0 feet to the P.T. of a curve whose radius calculates to be 7823.25 feet.

Thence continuing with said right of way line on said curve to the left in a northeasterly direction for 2047.0 feet to a concrete post.

Thence with a jog in the said right of way $N 24^{\circ}-15'W$ 55.0 feet to a concrete post.

Thence continuing with said right of way (said right of way from here on is 125.0 feet from the center of the main track) on said curve to the left in a northeasterly direction 380.3 feet to an iron in the west bank of Stony Creek.

Thence with said west bank of Stony Creek $S 19^{\circ}-38'E$ 994.3 feet to an iron.

Thence $N 81^{\circ}-41'W$ 200.0 feet to an iron.

Thence $S 43^{\circ}-42'W$ 138.8 feet to an iron.

Thence $S 17^{\circ}-24'W$ 184.3 feet to an iron in the center of County Road #63.

Thence with the center of County Road #63 $N 82^{\circ}-16'W$ 992.4 feet to an angle in the road.

Thence continuing with the center of County Road #63 $S 67^{\circ}-59'W$ 1413.5 feet to the place of beginning.

Containing 39.46 acres more or less.

Surveyed from a 111.49 acre tract.

NOTE: GOES AROUND THE 2.28 ACRE TRACT

Owen K. Shirk
Surveyor 4271

INDEXED ON MAP

4148

4D

BEADE TO WEISKITTLE DESCRIPTION
(October, 1967)

Being situated in Section 12, Town 3, Range 13, in Miami Township, Logan County, Ohio.

Beginning at an iron at the intersection of County Road #63 and County Road #64 (see County Engineer's Field Book #587, p.43)-

Thence with the center of County Road #63 N82°-16'W 389.7 feet to an iron.

Thence N17°-27'E 184.3 feet to an iron.

Thence N43°-42'E 138.8 feet to an iron.

Thence S81°-41'E 200.0 feet to an iron in the west bank of Stony Creek.

Thence with the west bank of Stony Creek S19°-08'E 233.3 feet to the center of County Road #63.

Thence with the center of County Road #63 S26°-17'W 88.5 feet to the place of beginning.

Containing 2.28 acres more or less.

Surveyed from a 111.49 acre tract.

Owen K. Shirk
Surveyor 4271

INDEXED ON MAP

4148

TD

O.K. S. F. B. 10

Oct 14, 1967

53

