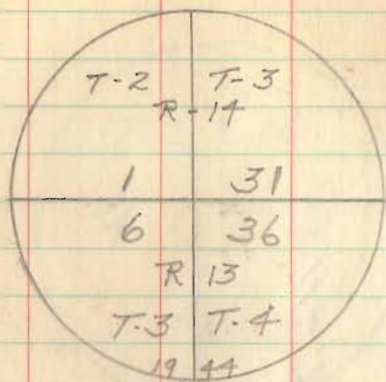


(2)

Rd. 45

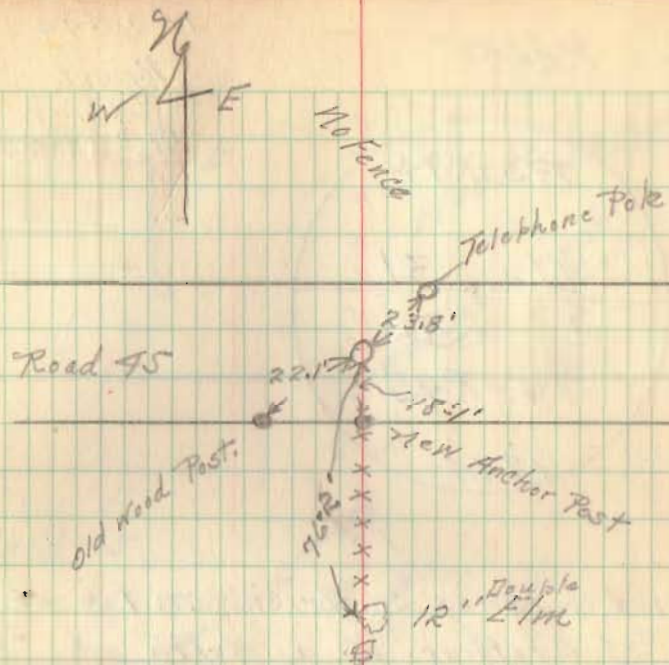
10-9-99
 Lysert
 Robbins
 Mr. Adams



Found Stone ^{and} Brick - Book 559 P. 65
 Set Concrete Mon. 3'-6" long
 Top 12" Below Surface of road

See Field Book 559 p. 65

25



INDEXED ON MAP

2639

Pleasant &
 Miami Turps.

INDEXED ON MAP

Found 31 Dec. 1968
 C.N.