

Road 71
Miami Twp.
Sec. 17 T. 3 R. 13

Stakes Placed 15' from $\frac{1}{2}$ for 30' Road.

See Survey 241 Book D Page 85

See Survey 944 Drawer R.

Note Ditch stationing starts at
Glett-Hahn line and runs South.

This road record found
1935. Commis Journal
5 Page 167 - 60'

1300

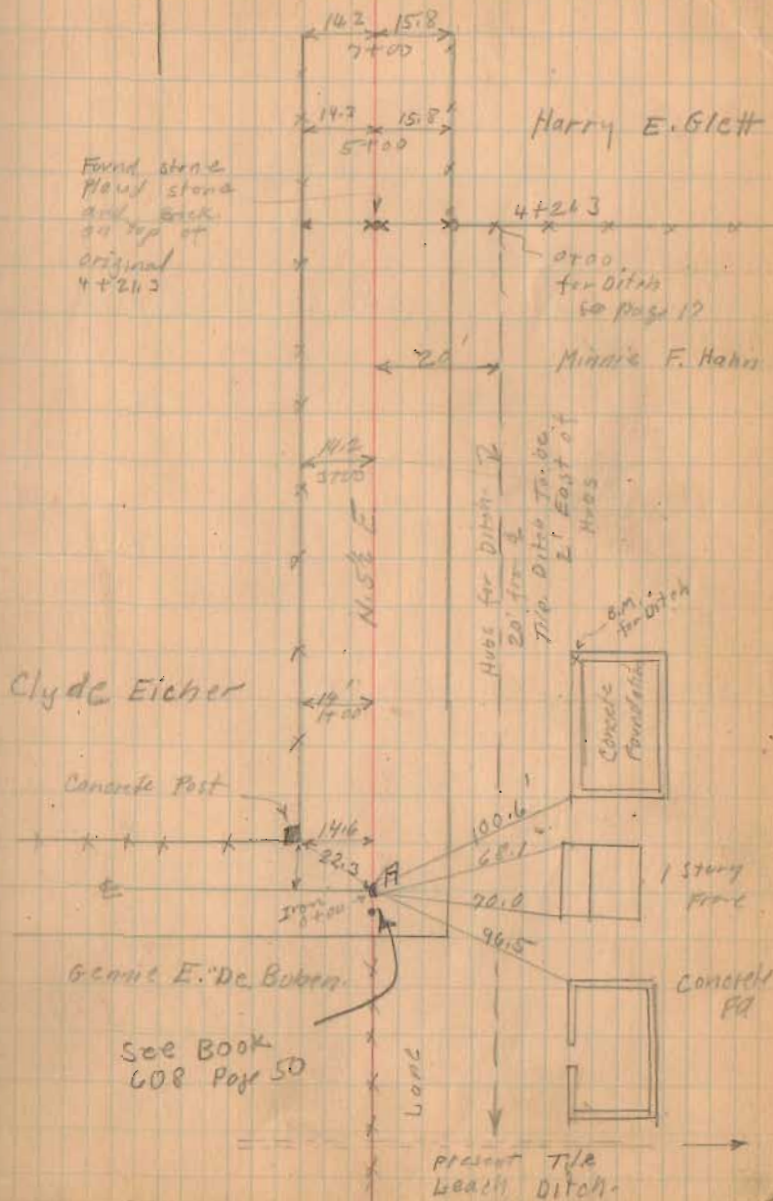
INDEXED ON MAP

Altered Comm Journal
10 Page 264 - 30'

Feb. 24 1932
Cloudy
Wright
McKishan

15

W. — E.



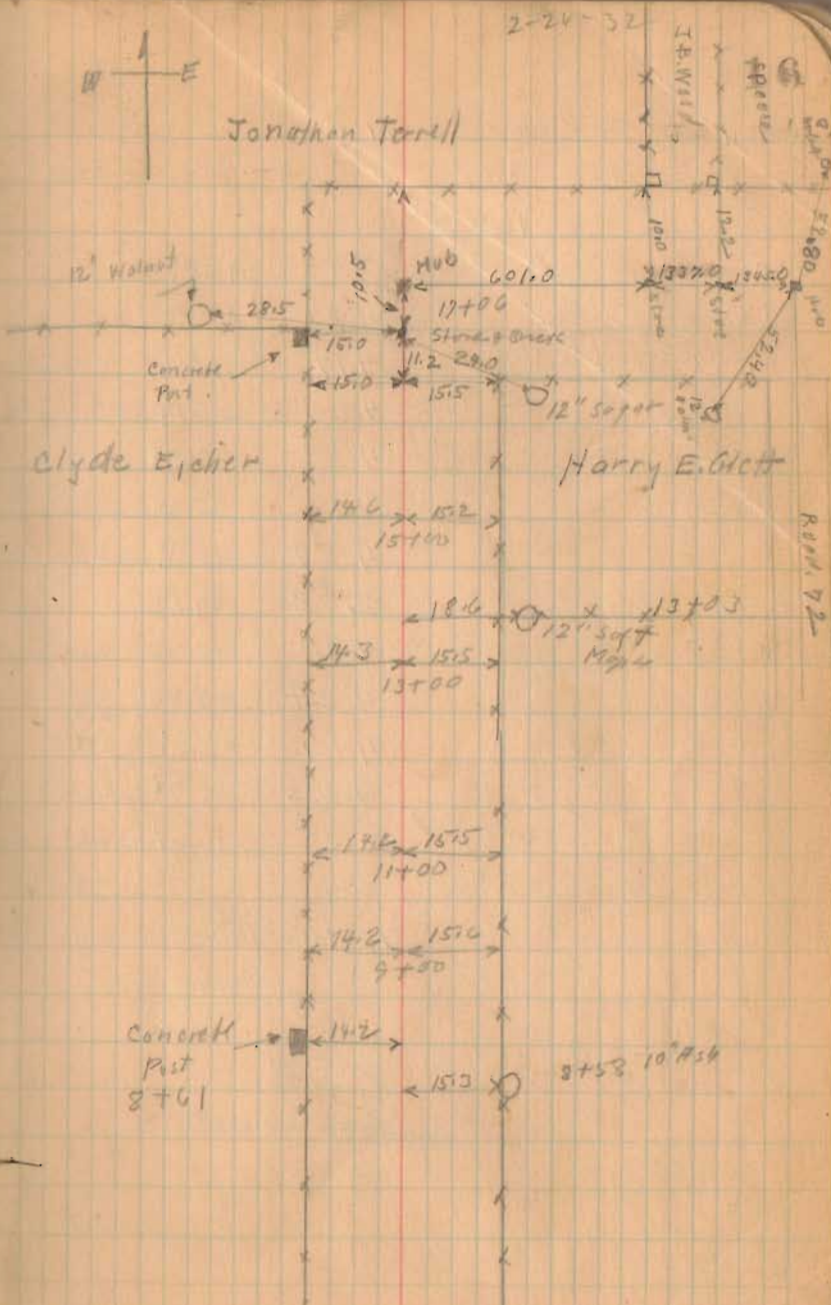
Road 71

staked 30' from \odot on N. side Glett

$\frac{3283' \times 5'}{43560} = .38$ Acres (Extra from
Glett N. side)

1300

INDEXED ON MAP



Road. 71

St.	H.L.	-S.	ELEV.	GRODE
	100.00			
0	"	3.93	96.07	93.50
0+50		4.20	95.80	92.37
1		4.17	95.83	93.25
+50		4.26	95.74	93.12
2		4.59	95.41	93.00
+50		4.66	95.34	92.87
3		4.59	95.41	92.75
B.M. (Not T.R.)		2.78	97.22	
3+50		4.30	95.70	92.62
4		4.24	95.76	92.50
+50		4.19	95.81	92.37
5		4.22	95.78	92.25
+50		3.33	96.67	92.12
5+65 Approx. end.				92.09
	10.00		90.00	

1300

INDEXED ON MAP.

cut.

(Ditch see Page 15)

2.57-2'7"	
2.43-2'5"	
2.58-2'7"	
2.62-2'7½"	
2.41-2'5"	
2.47-2'5½"	
2.66-2'8"	
B.M. N.W. Cor of Concrete Fd.	
306 3'-1"	} Sta. 2+70 (of Ditch) 50'± East
326 3'-3"	
} of Ditch	
2.44 3'-5"	
3.53 3'-0"	
4.55 4'-6½"	

Flow line of old Tilt. (Assumed Elev. 90.)