

REC'D 10-2-07 SMY OK

Lee Surveying and Mapping Co., Inc.

Land Surveys • Topography • Subdivisions • Construction Layout

117 N. Madriver St.
Bellefontaine OH 43311



Phone: (937) 593-7335
Fax: (937) 593-7444

FARLEY 3.185 ACRES

Lying in Section 34, Town 4, Range 13, Miami Township, Logan County, Ohio.

Being out of the Robert A. Farley and Connie K. Farley 36 acre tract and original 100 acre tract as deeded and described in Official Record 80, Page 358 and Official Record 319, Page 991 of the Logan County Records of Deeds and being more particularly described as follows:

Commencing on a 1 inch iron rod found at P.I. Station 40+45.1 (Logan County Engineer's Field Book 700, Page 3) of County Highway 62 on the east line of Section 34, the east line of Miami Township and the west line of Union Township.

THENCE, with the center-line of County Highway 62 (60 feet wide), the east line of Section 34, the east line of Miami Township and the west line of Union Township, S 4°-29'-33"W, a distance of 2069.22 feet to a railroad spike set at the TRUE POINT OF BEGINNING.

THENCE, with the center-line of County Highway 62, the east line of Section 34, the east line of Miami Township and the west line of Union Township, S 4°-29'-33"W, a distance of 150.00 feet to a railroad spike set, passing a railroad spike set at 75.00 feet.

THENCE, N 85°-30'-26"W, a distance of 30.00 feet to a 5/8 inch iron rod set on the west right-of-way of County Highway 62.

THENCE, with the west right-of-way of County Highway 62, N 4°-29'-33"E, a distance of 63.10 feet to a 5/8 inch iron rod set.

THENCE, N 89°-05'-36"W, a distance of 81.10 feet to a 5/8 inch iron rod set.

THENCE, S 82°-26'-23"W, a distance of 145.23 feet to a 5/8 inch iron rod set.

THENCE, S 67°-38'-13"W, a distance of 136.21 feet to a 5/8 inch iron rod set.

THENCE, N 83°-00'-53"W, a distance of 202.20 feet to a 5/8 inch iron rod set.

THENCE, N 76°-56'-29"W, a distance of 358.80 feet to a 5/8 inch iron rod set.

THENCE, N 72°-48'-02"W, a distance of 140.55 feet to a 5/8 inch iron rod set.

THENCE, N 81°-47'-46"W, a distance of 285.29 feet to a 5/8 inch iron rod set.

THENCE, N 75°-29'-26"W, a distance of 300.00 feet to a 5/8 inch iron rod set.

THENCE, N 4°-29'-42"E, a distance of 363.00 feet to a 5/8 inch iron rod set.

THENCE, S 75°-29'-26"E, a distance of 300.00 feet to a 5/8 inch iron rod set.

THENCE, with the west line of the James R. McDonald 13.00 acre tract (O.R. 583, Pg. 19) and west line extended, S 4°-29'-42"W, a distance of 342.96 feet to a 5/8 inch iron rod set.

THENCE, S 81°-47'-46"E, a distance of 288.15 feet to a 5/8 inch iron rod set.

THENCE, S 72°-48'-02"E, a distance of 141.40 feet to a 5/8 inch iron rod set.

THENCE, S 76°-56'-29"E, a distance of 357.02 feet to a 5/8 inch iron rod set.

Lee Surveying and Mapping Co., Inc.

Land Surveys • Topography • Subdivisions • Construction Layout

117 N. Madriver St.
Bellefontaine OH 43311



Phone: (937) 593-7335
Fax: (937) 593-7444

THENCE, S 83°-00'-53"E, a distance of 195.90 feet to a 5/8 inch iron rod set.

THENCE, N 67°-38'-13"E, a distance of 133.57 feet to a 5/8 inch iron rod set.

THENCE, N 82°-26'-23"E, a distance of 149.31 feet to a 5/8 inch iron rod set.

THENCE, S 89°-05'-36"E, a distance of 83.83 feet to a 5/8 inch iron rod set on the west right-of-way of County Highway 62.

THENCE, with the west right-of-way of County Highway 62, N 4°-29'-33"E, a distance of 66.86 feet to a 5/8 inch iron rod set.

THENCE, S 85°-30'-26"E, a distance of 30.00 feet to the point of beginning.

Containing 3.185 acres, of which 0.103 acre is within the highway right-of-way.

The basis for bearings is the east line of Section 34, being S 4°-29'-33"W, and all other bearings are from angles and distances measured in a field survey by Lee Surveying and Mapping Co., Inc. on September 26, 2007.



ORIGINAL STAMP IN GREEN

Description prepared by:

A handwritten signature in black ink that reads 'William K. Bruce'.

William K. Bruce
Professional Surveyor 7437
September 27, 2008

2848087



REC'D 10-2-07 SWJ OK

Lee Surveying and Mapping Co., Inc.

Land Surveys • Topography • Subdivisions • Construction Layout

117 N. Madriver St.
Bellefontaine OH 43311



Phone: (937) 593-7335
Fax: (937) 593-7444

FARLEY 20.00 FEET WIDE INGRESS/EGRESS EASEMENT

Lying in Section 34, Town 4, Range 13, Miami Township, Logan County, Ohio.

Being a 20.00 feet wide ingress/egress easement over the Robert A. Farley and Connie K. Farley 36 acre tract as deeded and described in Official Record 80, Page 358 of the Logan County Records of Deeds and being more particularly described as follows:

Commencing on a 1 inch iron rod found at P.I. Station 40+45.1 (Logan County Engineer's Field Book 700, Page 3) of County Highway 62 on the east line of Section 34, the east line of Miami Township and the west line of Union Township.

THENCE, with the center-line of County Highway 62 (60 feet wide), the east line of Section 34, the east line of Miami Township and the west line of Union Township, S 4°-29'-33"W, a distance of 2069.22 feet to a railroad spike set.

THENCE, with the center-line of County Highway 62, the east line of Section 34, the east line of Miami Township and the west line of Union Township, S 4°-29'-33"W, a distance of 64.98 feet to a point at the TRUE POINT OF BEGINNING.

THENCE, with the center-line of County Highway 62, the east line of Section 34, the east line of Miami Township and the west line of Union Township, S 4°-29'-33"W, a distance of 20.04 feet to a point, passing a railroad spike set at 10.02 feet.

THENCE, N 89°-05'-36"W, a distance of 30.06 feet to a 5/8 inch iron rod set.

THENCE, N 89°-05'-36"W, a distance of 81.10 feet to a 5/8 inch iron rod set.

THENCE, S 82°-26'-23"W, a distance of 145.23 feet to a 5/8 inch iron rod set.

THENCE, S 67°-38'-13"W, a distance of 136.21 feet to a 5/8 inch iron rod set.

THENCE, N 83°-00'-53"W, a distance of 202.20 feet to a 5/8 inch iron rod set.

THENCE, N 76°-56'-29"W, a distance of 358.80 feet to a 5/8 inch iron rod set.

THENCE, N 72°-48'-02"W, a distance of 140.55 feet to a 5/8 inch iron rod set.

THENCE, N 81°-47'-46"W, a distance of 285.29 feet to a 5/8 inch iron rod set.

THENCE, with an east line of the Robert A. Farley and Connie K. Farley original 100 acre tract (O.R. 319, Pg. 991), N 4°-29'-42"E, a distance of 20.04 feet to a 5/8 inch iron rod set.

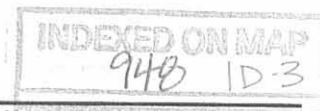
THENCE, S 81°-47'-46"E, a distance of 288.15 feet to a 5/8 inch iron rod set.

THENCE, S 72°-48'-02"E, a distance of 141.40 feet to a 5/8 inch iron rod set.

THENCE, S 76°-56'-29"E, a distance of 357.02 feet to a 5/8 inch iron rod set.

THENCE, S 83°-00'-53"E, a distance of 195.90 feet to a 5/8 inch iron rod set.

THENCE, N 67°-38'-13"E, a distance of 133.57 feet to a 5/8 inch iron rod set.



Lee Surveying and Mapping Co., Inc.

Land Surveys • Topography • Subdivisions • Construction Layout

117 N. Madriver St.
Bellefontaine OH 43311



Phone: (937) 593-7335
Fax: (937) 593-7444

THENCE, N 82°-26'-23"E, a distance of 149.31 feet to a 5/8 inch iron rod set.

THENCE, S 89°-05'-36"E, a distance of 83.83 feet to a 5/8 inch iron rod set on the west right-of-way of County Highway 62.

THENCE, S 89°-05'-36"E, a distance of 30.06 feet to the point of beginning.

The basis for bearings is the east line of Section 34, being S 4°-29'-33"W, and all other bearings are from angles and distances measured in a field survey by Lee Surveying and Mapping Co., Inc. on September 26, 2007.



ORIGINAL STAMP IN GREEN

Description prepared by:

A handwritten signature in cursive script that reads 'William K. Bruce'.

William K. Bruce
Professional Surveyor 7437
September 27, 2008

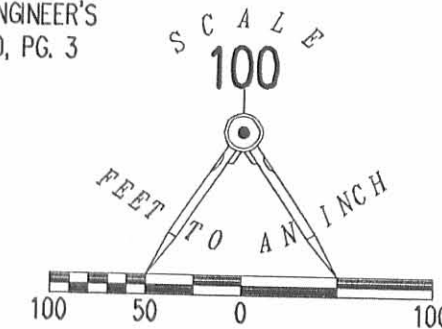
2848087



REC'D 10-2-07 SWJ OK

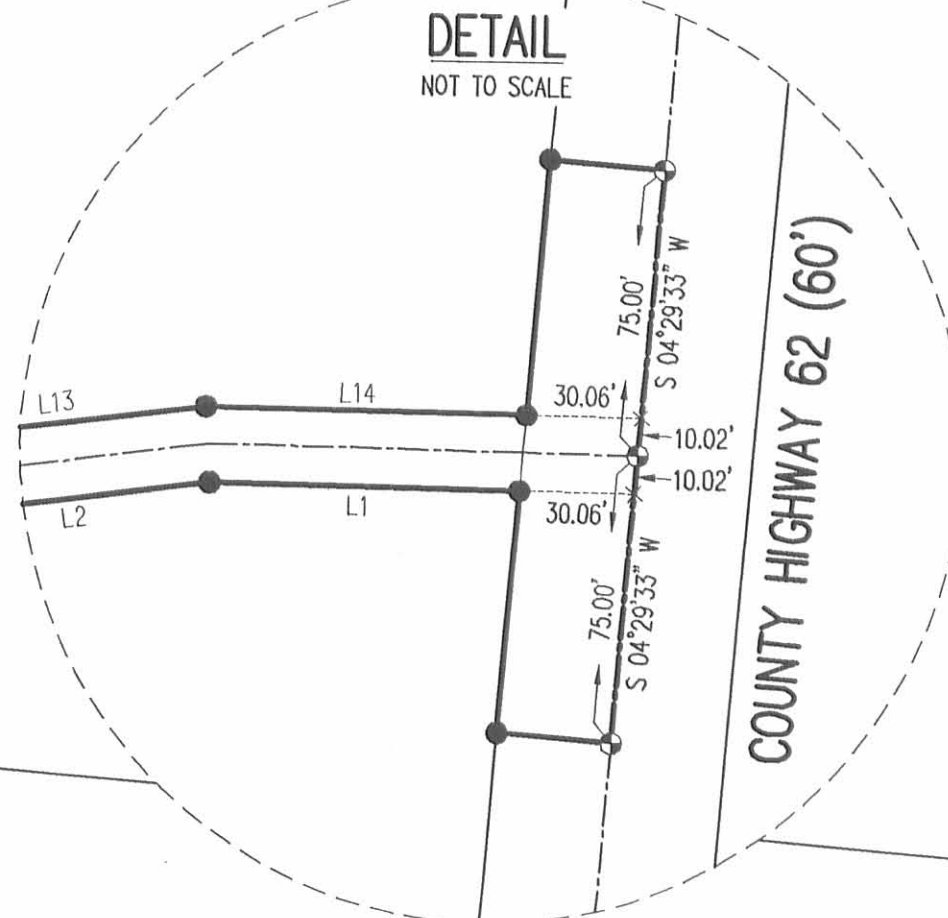
COUNTY HIGHWAY 62

P.I. STATION 40+45.1
LOGAN COUNTY ENGINEER'S
FIELD BOOK 700, PG. 3



LEGEND:

- ⊕ 1 INCH IRON ROD FOUND
- ⊗ RAILROAD SPIKE FOUND
- ⊕ RAILROAD SPIKE SET
- 5/8 INCH IRON ROD SET
- 5/8 INCH IRON ROD FOUND



LINE	BEARING	DISTANCE
L1	N 89°05'36" W	81.10'
L2	S 82°26'23" W	145.23'
L3	S 67°38'13" W	136.21'
L4	N 83°00'53" W	202.20'
L5	N 76°56'29" W	358.80'
L6	N 72°48'02" W	140.55'
L7	N 81°47'46" W	285.29'
L8	S 81°47'46" E	288.15'
L9	S 72°48'02" E	141.40'
L10	S 76°56'29" E	357.02'
L11	S 83°00'53" E	195.90'
L12	N 67°38'13" E	133.57'
L13	N 82°26'23" E	149.31'
L14	S 89°05'36" E	83.83'

JAMES R. McDONALD
13.00 ACRES
O.R. 583, PG. 19

3.185 ACRES
OF WHICH 0.103 ACRE IS WITHIN
THE HIGHWAY RIGHT-OF-WAY
(2.462 ACRES)

ROBERT A. FARLEY AND
CONNIE K. FARLEY
ORIGINAL 100 ACRES
O.R. 319, PG. 991

ROBERT A. FARLEY AND
CONNIE K. FARLEY
36 ACRES
O.R. 80, PG. 358

SURVEY OF 3.185 ACRES OUT OF THE
ROBERT A. FARLEY AND
CONNIE K. FARLEY
36 ACRE TRACT AND
ORIGINAL 100 ACRE TRACT
OFFICIAL RECORD 80, PAGE 358
OFFICIAL RECORD 319, PAGE 991
SECTION 34, TOWN 4, RANGE 13
MIAMI TOWNSHIP
LOGAN COUNTY, OHIO

SURVEYED BY:

William K. Bruce
WILLIAM K. BRUCE
PROFESSIONAL SURVEYOR 7437
SEPTEMBER 26, 2007



COPYRIGHT 2007 BY:
LEE SURVEYING & MAPPING CO., INC.
117 North Madriver Street
BELLEFONTAINE, OHIO 43311
(937) 593-7335
surveys@lsmcinc.us

KSS D0907 2848087 L-2848-2

2 WORKING DAYS
BEFORE YOU DIG
CALL TOLL FREE 800-362-2764
OHIO UTILITIES PROTECTION SERVICE

INDEXED ON MAP
948 1P

SECTION SURVEY

Miami Twp

Sec 4 T3 R13, Sec 34 T4 R13

(948)

INDEXED ON MAP



May 13. 1845

A.A. Harbison

C.S.L. Co. O