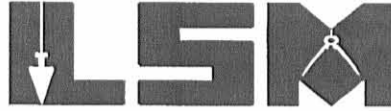


RECID 11-18-02 SMJ RL

Lee Surveying and Mapping Co., Inc.

Land Surveys • Topography • Subdivisions • Construction Layout

117 N. Madriver St.
Bellefontaine OH 43311



Phone: (937) 593-7335
Fax: (937) 593-7444

DAVIS 143.036 ACRES

Lying in Virginia Military Survey 9905, McArthur Township, Logan County, Ohio.

Being all of the Virginia Davis original 142.30 acre tract as deeded and described in Volume 242, Page 234 of the Logan County Records of Deeds and being more particularly described as follows:

Beginning at a railroad spike found at an angle in the center-line of Ohio Route 274 at station 86+92.5 (Logan County Engineer's Field Book 559, Pg. 72).

THENCE, with the center-line of Ohio Route 274 (60 feet wide), N 47°-30'-00" E, a distance of 43.48 feet to a railroad spike found at the TRUE POINT OF BEGINNING.

THENCE, with the center-line of Ohio Route 274, N 47°-30'-00" E, a distance of 1136.65 feet to a MAG nail set.

THENCE, with the west line of the John T. Blumenschein 10.57 acre tract (O.R. 194, Pg. 572), S 12°-32'-05" E, a distance of 397.00 feet to a 5/8 inch iron rod set, passing a 5/8 inch iron rod set at 34.63 feet.

THENCE, with the south line of the said 10.57 acre tract, N 80°-19'-06" E, a distance of 642.00 feet to a 5/8 inch iron rod set.

THENCE, with the west lines of the Jonas Hershberger orig. 111.08 acre tract, (Vol. 387, Pg. 921), and the Allen A. Barnhart, Trustee, 55.231 acre tract (O.R. 438, Pg. 603), S 6°-59'-11" E, a distance of 3856.79 feet to a 5/8 inch iron rod set.

THENCE, with the north line of the Ned R. Buchenroth original 100.43 acre tract (Vol. 248, Pg. 58), S 83°-16'-02" W, a distance of 1614.86 feet to a 5/8 inch iron rod set.

THENCE, with the east lines of the James E. Milroy, Trustee, 50.92 acre tract (O.R. 360, Pg. 916, Second Tract), and the Garnet L. Shanahan 13.319 acre tract (O.R. 506, Pg. 599), N 6°-49'-33" W, a distance of 3554.33 feet to the point of beginning, passing a 5/8 inch iron rod found at 3517.39 feet.

Containing 143.036 acres, of which 0.784 acre is within the highway right-of-way.

The basis for bearings is the center-line of Ohio Route 274, being N 47°-30'-00" E, and all other bearings are from angles and distances measured in a field survey by Lee Surveying and Mapping Co., Inc. on October 28, 2002.



ORIGINAL STAMP IN GREEN

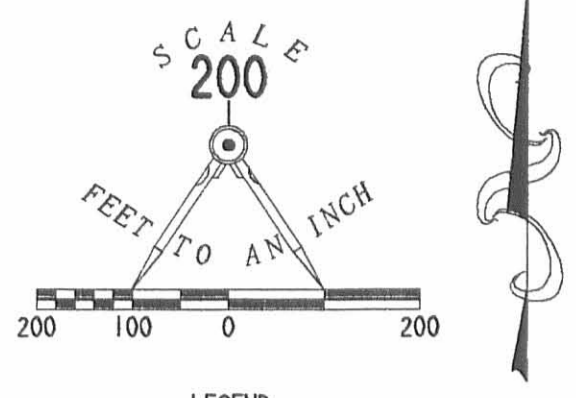
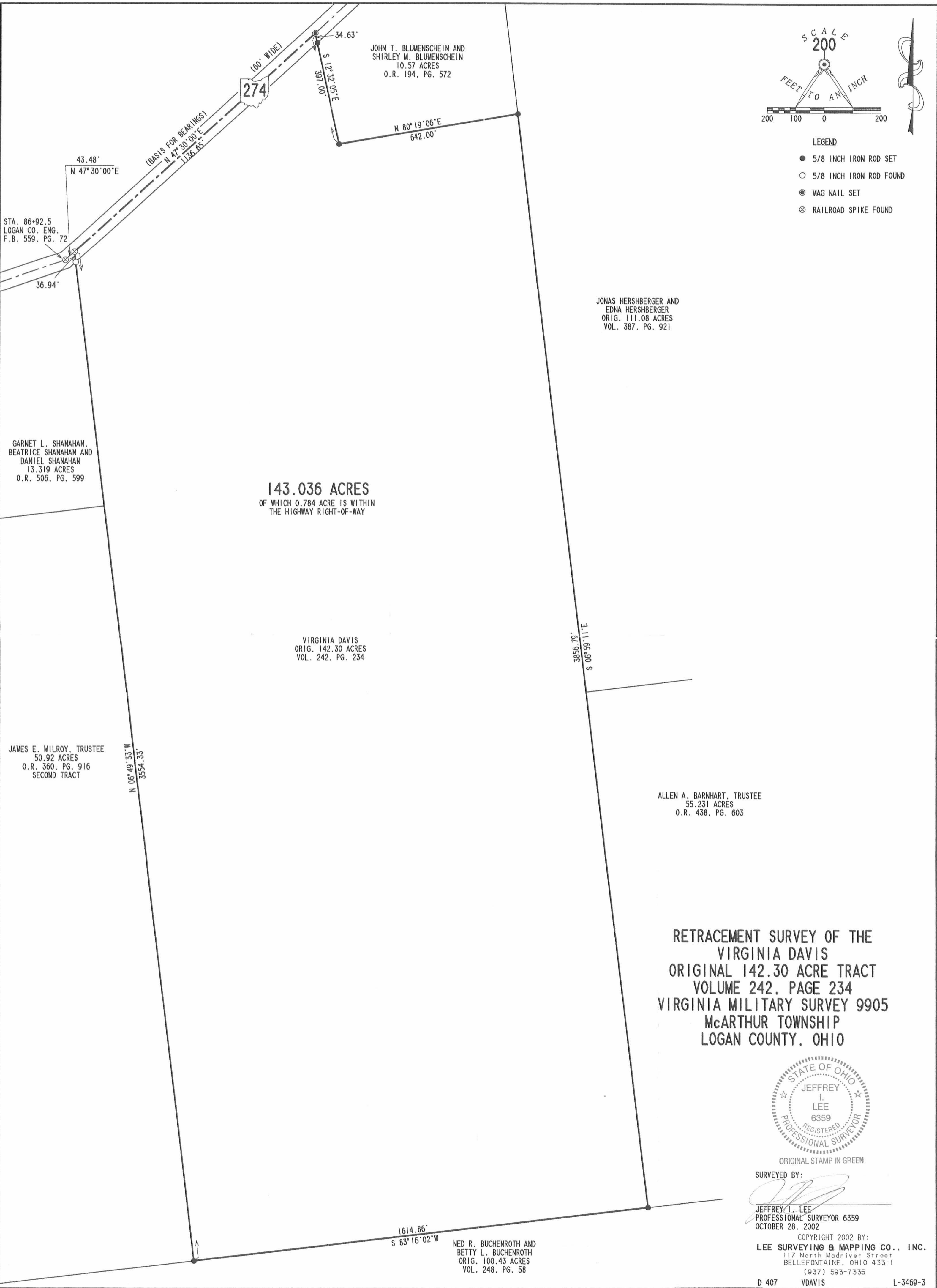
Description prepared by:

Jeffrey I. Lee
Professional Surveyor 6359
November 11, 2002

L-3469

INDEXED ON MAP
9414 ID

Revised 11-18-02 SMJ/AL



RETRACEMENT SURVEY OF THE
VIRGINIA DAVIS
ORIGINAL 142.30 ACRE TRACT
VOLUME 242, PAGE 234
VIRGINIA MILITARY SURVEY 9905
McARTHUR TOWNSHIP
LOGAN COUNTY, OHIO



ORIGINAL STAMP IN GREEN

SURVEYED BY:
Jeffrey I. Lee
JEFFREY I. LEE
PROFESSIONAL SURVEYOR 6359
OCTOBER 28, 2002

COPYRIGHT 2002 BY:
LEE SURVEYING & MAPPING CO., INC.
117 North Medriver Street
BELLEFONTAINE, OHIO 43311
(937) 593-7335

INDEXED ON MAP
9414 IP

RECID 12-20-11 SMM OK

Lee Surveying and Mapping Co., Inc.

Land Surveys • Topography • Subdivisions • Construction Layout

117 N. Madriver St.
Bellefontaine OH 43311



Phone: (937) 593-7335
Fax: (937) 593-7444
surveys@lsminc.us

FORSYTHE 11.000 ACRES

Lying in Virginia Military Survey 9905, McArthur Township, Logan County, Ohio.

Being out of the John A. Forsythe 143.036 acre tract as deeded and described in Official Record 831, Page 996 and the Joseph A. Forsythe and Kimberly J. Forsythe 143.036 acre tract as deeded and described in Official Record 846, Page 735 of the Logan County Records of Deeds and being more particularly described as follows:

Commencing on a railroad spike found on the center-line of Ohio Route 274 at Station 86+56 (Logan County Engineer's Field Book 559, Page 72).

THENCE, with the center-line of Ohio Route 274 (60 feet wide), N 47°-30'-00"E, a distance of 228.13 feet to a MAG nail set at the TRUE POINT OF BEGINNING.

THENCE, with the center-line of Ohio Route 274, N 47°-30'-00"E, a distance of 930.07 feet to a MAG nail set.

THENCE, S 12°-32'-05"E, a distance of 573.06 feet to a 5/8 inch iron rod set, passing a 5/8 inch iron rod set at 34.63 feet.

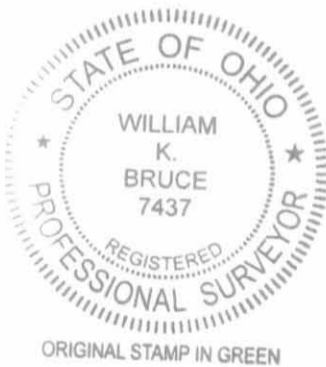
THENCE, S 47°-30'-00"W, a distance of 1000.24 feet to a 5/8 inch iron rod set.

THENCE, N 06°-49'-33"W, a distance of 611.14 feet to the point of beginning, passing a 5/8 inch iron rod set at 574.21 feet.

Containing 11.000 acres, of which 0.642 acre is within the highway right-of-way.

Property is subject to any and all previous easements and rights-of-way of record.

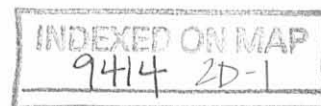
The basis for bearings is the center-line of Ohio Route 274, east of Station 86+56, being N 47°-30'-00"E, and all other bearings are from angles and distances measured in a field survey by Lee Surveying and Mapping Co., Inc. on October 5, 2011, Revised December 19, 2011.



Description prepared by:

William K. Bruce
Professional Surveyor 7437
October 5, 2011, Revised December 20, 2011

34691011



REV'D 12-20-11 SWY/BU

Lee Surveying and Mapping Co., Inc.

Land Surveys • Topography • Subdivisions • Construction Layout

117 N. Madriver St.
Bellefontaine OH 43311



Phone: (937) 593-7335
Fax: (937) 593-7444
surveys@lsmcinc.us

FORSYTHE 19.00 FEET WIDE INGRESS/EGRESS EASEMENT

Lying in Virginia Military Survey 9905, McArthur Township, Logan County, Ohio.

Being a 19.00 feet wide ingress/egress easement over a portion of the John A. Forsythe 143.036 acre tract as deeded and described in Official Record 831, Page 996 and the Joseph A. Forsythe and Kimberly J. Forsythe 143.036 acre tract as deeded and described in Official Record 846, Page 735 of the Logan County Records of Deeds and being more particularly described as follows:

Commencing on a railroad spike found on the center-line of Ohio Route 274 at Station 86+56 (Logan County Engineer's Field Book 559, Page 72).

THENCE, with the center-line of Ohio Route 274 (60 feet wide), N 47°-30'-00"E, a distance of 1158.20 feet to a MAG nail set at the TRUE POINT OF BEGINNING, passing a MAG nail set at 228.13 feet.

THENCE, with the center-line of Ohio Route 274, N 47°-30'-00"E, a distance of 21.93 feet to a MAG nail found.

THENCE, with the west line of the John T. Blumenschein 10.57 acre tract (O.R. 194, Pg. 572), S 12°-32'-05"E, a distance of 397.00 feet to a 5/8 inch iron rod found, passing a 5/8 inch iron rod found at 34.63 feet.

THENCE, S 12°-32'-05"E, a distance of 187.01 feet to a 5/8 inch iron rod set.

THENCE, S 77°-27'-55"W, a distance of 19.00 feet to a 5/8 inch iron rod set.

THENCE, N 12°-32'-05"W, a distance of 573.06 feet to the point of beginning, passing a 5/8 inch iron rod set at 538.43 feet.

Property is subject to any and all previous easements and rights-of-way of record.

The basis for bearings is the center-line of Ohio Route 274, east of Station 86+56, being N 47°-30'-00"E, and all other bearings are from angles and distances measured in a field survey by Lee Surveying and Mapping Co., Inc. on October 5, 2011, revised December 19, 2011.

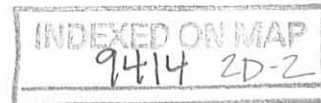


ORIGINAL STAMP IN GREEN

Description prepared by:

William K. Bruce
Professional Surveyor 7437
December 20, 2011

34691011



Rec'd 12/22/11 dicglt

Lee Surveying and Mapping Co., Inc.

Land Surveys • Topography • Subdivisions • Construction Layout

117 N. Madriver St.
Bellefontaine OH 43311



Phone: (937) 593-7335
Fax: (937) 593-7444
surveys@lsminc.us

FORSYTHE 0.252 ACRES

Lying in Virginia Military Survey 9905, McArthur Township, Logan County, Ohio.

Being out of the John A. Forsythe 143.036 acre tract as deeded and described in Official Record 831, Page 996 and the Joseph A. Forsythe and Kimberly J. Forsythe 143.036 acre tract as deeded and described in Official Record 846, Page 735 of the Logan County Records of Deeds and being more particularly described as follows:

Commencing on a railroad spike found on the center-line of Ohio Route 274 at Station 86+56 (Logan County Engineer's Field Book 559, Page 72).

THENCE, with the center-line of Ohio Route 274 (60 feet wide), N 47°-30'-00"E, a distance of 1158.20 feet to a MAG nail set at the TRUE POINT OF BEGINNING, passing a MAG nail set at 228.13 feet.

THENCE, with the center-line of Ohio Route 274, N 47°-30'-00"E, a distance of 21.93 feet to a MAG nail found.

THENCE, with the west line of the John T. Blumenschein 10.57 acre tract (O.R. 194, Pg. 572), S 12°-32'-05"E, a distance of 397.00 feet to a 5/8 inch iron rod found, passing a 5/8 inch iron rod found at 34.63 feet.

THENCE, S 12°-32'-05"E, a distance of 187.01 feet to a 5/8 inch iron rod set.

THENCE, S 77°-27'-55"W, a distance of 19.00 feet to a 5/8 inch iron rod set.

THENCE, N 12°-32'-05"W, a distance of 573.06 feet to the point of beginning, passing a 5/8 inch iron rod set at 538.43 feet.

Containing 0.252 acre, of which 0.015 acre is within the highway right-of-way.

Property is subject to any and all previous easements and rights-of-way of record.

The basis for bearings is the center-line of Ohio Route 274, east of Station 86+56, being N 47°-30'-00"E, and all other bearings are from angles and distances measured in a field survey by Lee Surveying and Mapping Co., Inc. on October 5, 2011, revised December 21, 2011.



Description prepared by:

A handwritten signature in black ink that reads 'William K. Bruce'.

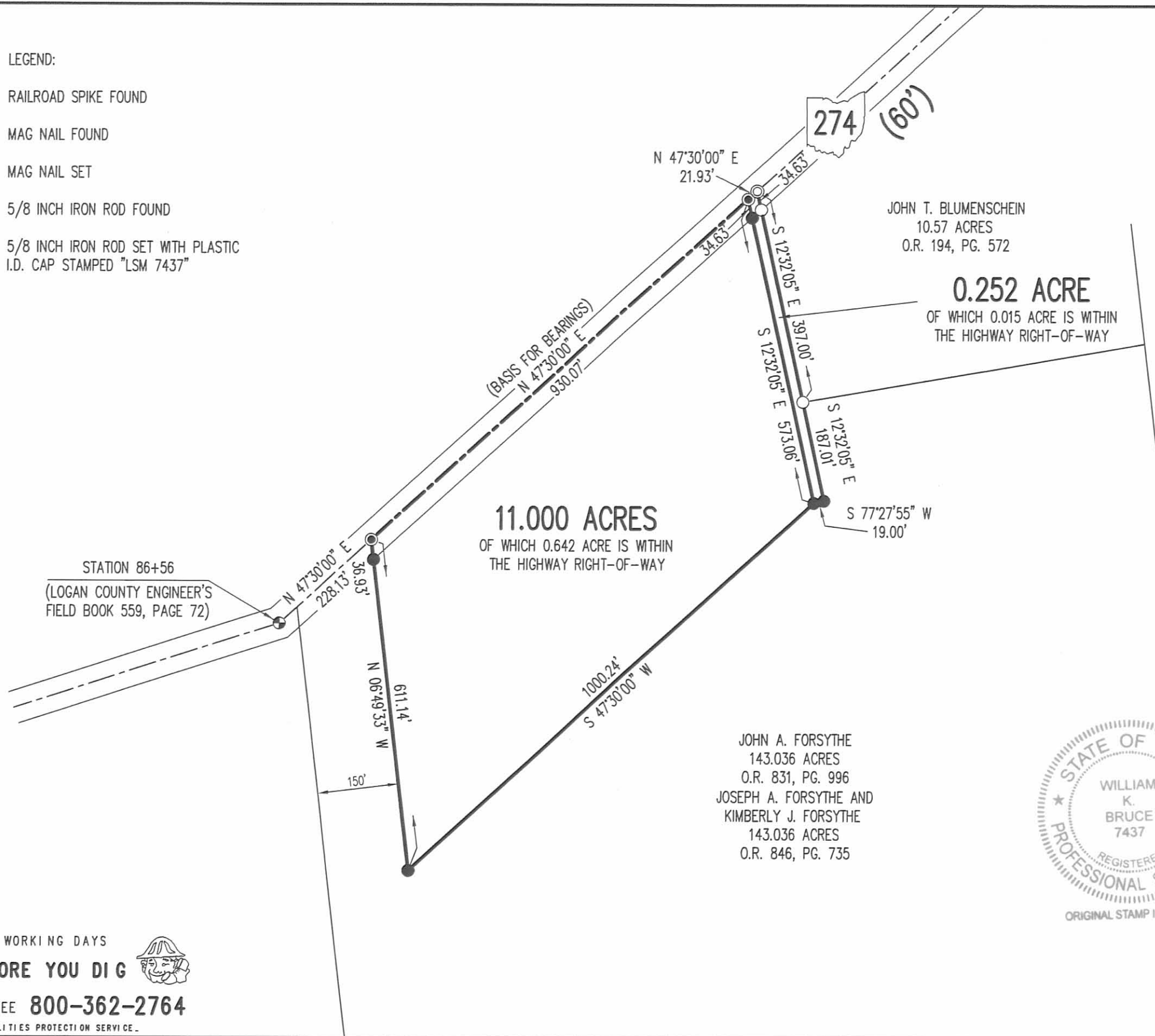
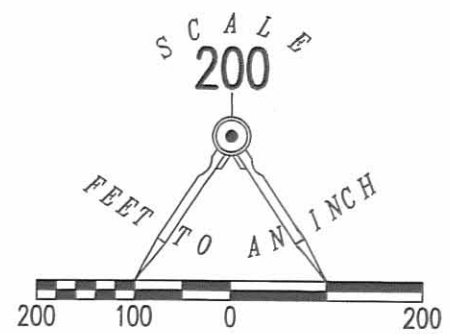
William K. Bruce
Professional Surveyor 7437
December 21, 2011

34691011A



LEGEND:

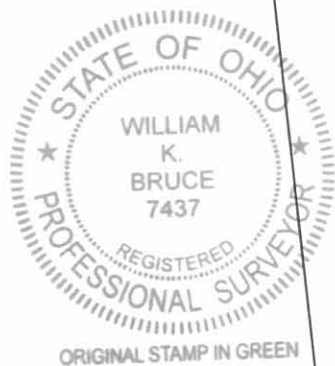
- ⊕ RAILROAD SPIKE FOUND
- ⊙ MAG NAIL FOUND
- MAG NAIL SET
- 5/8 INCH IRON ROD FOUND
- 5/8 INCH IRON ROD SET WITH PLASTIC I.D. CAP STAMPED "LSM 7437"



SURVEY OF 11.000 ACRE AND 0.252 ACRE TRACT OUT OF THE JOHN A. FORSYTHE 143.036 ACRE TRACT OFFICIAL RECORD 831, PAGE 996 AND JOSEPH A. FORSYTHE AND KIMBERLY J. FORSYTHE 143.036 ACRE TRACT OFFICIAL RECORD 846, PAGE 735 VIRGINIA MILITARY SURVEY 9905 McARTHUR TOWNSHIP LOGAN COUNTY, OHIO

SURVEYED BY:

William K. Bruce
WILLIAM K. BRUCE
PROFESSIONAL SURVEYOR 7437
OCTOBER 5, 2011
REVISED DECEMBER 21, 2011



2 WORKING DAYS
BEFORE YOU DIG
CALL TOLL FREE **800-362-2764**
OHIO UTILITIES PROTECTION SERVICE

COPYRIGHT 2011 BY:
LEE SURVEYING & MAPPING CO., INC.
117 North Madriver Street
BELLEFONTAINE, OHIO 43111
(937) 593-7335
WWW.LSMINC.US
surveys@lsminc.us
KSS/ADW D1011 34691011A L-3469-3

INDEXED ON MAP
9414 2P