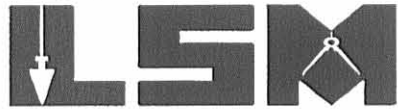


REC'D 8-23-01 SMY OK

Lee Surveying and Mapping Co., Inc.

Land Surveys • Topography • Subdivisions • Construction Layout

117 N. Madriver St.
Bellefontaine OH 43311



Phone: (937) 593-7335
Fax: (937) 593-7444

WISH 2.500 ACRES

Lying in Virginia Military Survey 9884, McArthur Township, Logan County, Ohio.

Being out of the Joseph P. Wish 13.0 acre tract as deeded and described in Official Record 380, Page 840 of the Logan County Records of Deeds and being more particularly described as follows:

Beginning at a MAG nail found on the south line of McArthur Township at the intersection of the center-lines of County Highway 57 and U.S. Route 68.

THENCE, with the center-line of U.S. Route 68 (varied width), N 15°-12'-05" E, a distance of 379.94 feet to a railroad spike found at highway station 61+00.

THENCE, continuing with the center-line of U.S. Route 68, N 15°-10'-00" E, a distance of 1892.51 feet to a railroad spike found at the TRUE POINT OF BEGINNING.

THENCE, with the center-line of U.S. Route 68, N 15°-10'-00" E, a distance of 216.81 feet to a MAG nail set.

THENCE, N 82°-27'-17" E, a distance of 502.70 feet to a 5/8 inch iron rod set, passing a 5/8 inch iron rod set at 48.78 feet.

THENCE, S 7°-32'-43" E, a distance of 200.00 feet to a 5/8 inch iron rod set.

THENCE, with the north line of the Robert Dean Dodds 49.009 acre tract (O.R. 84, Pg. 195), S 82°-27'-17" W, a distance of 586.41 feet to the point of beginning, passing a 5/8 inch iron rod set at 537.63 feet.

Containing 2.500 acres, of which 0.224 acre is within the highway right-of-way.

The basis for bearings is the center-line of U.S. Route 68 at the point of beginning, being N 15°-10'-00" E, and all other bearings are from angles and distances measured in a field survey by Lee Surveying and Mapping Co., Inc. on August 21, 2001

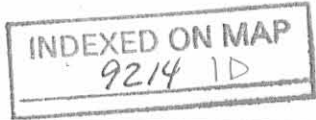
Description prepared by:

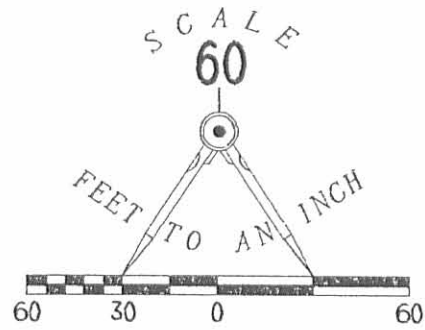


ORIGINAL STAMP IN GREEN

Jeffrey I. Lee
Jeffrey I. Lee
Professional Surveyor 6359
August 23, 2001

L-3215





LEGEND

- 5/8 INCH IRON ROD SET
- ⊗ RAILROAD SPIKE FOUND
- ⊙ MAG NAIL SET
- ⊘ MAG NAIL FOUND

JOSEPH P. WISH
13 ACRES
O.R. 380, PG. 840



N 82° 27' 17" E
502.70'

2.500 ACRES
OF WHICH 0.224 ACRE ARE WITHIN
THE HIGHWAY RIGHT-OF-WAY

ROBERT DEAN DODDS
49.009 ACRES
O.R. 84, PG. 195

SURVEY OF 2.500 ACRES
OUT OF THE JOSEPH P. WISH
13.0 ACRE TRACT
OFFICIAL RECORD 380, PAGE 840
VIRGINIA MILITARY SURVEY 9884
McARTHUR TOWNSHIP
LOGAN COUNTY, OHIO



SURVEYED BY:
Jeffrey I. Lee
JEFFREY I. LEE
PROFESSIONAL SURVEYOR 6359
AUGUST 21, 2001

COPYRIGHT 2001 BY:
LEE SURVEYING & MAPPING CO., INC.
117 North Madriver Street
BELLEFONTAINE, OHIO 43311
(937) 593-7335

COUNTY HIGHWAY 57 McARTHUR TOWNSHIP
LAKE TOWNSHIP

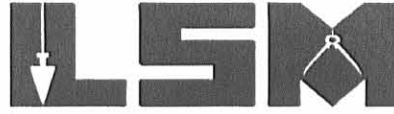
INDEXED ON MAP
9214 1P

REC'D 10-11-06 SML/AL

Lee Surveying and Mapping Co., Inc.

Land Surveys • Topography • Subdivisions • Construction Layout

117 N. Madriver St.
Bellefontaine OH 43311



Phone: (937) 593-7335
Fax: (937) 593-7444

1975-2005 - 30 YEARS OF EXCELLENCE

**WISH
3.576 ACRES**

Lying in Virginia Military Survey 9884, McArthur Township, Logan County, Ohio.

Being out of the Paul F. Wish, Trustee and Marjorie V. Wish, Trustee, original 133.71 acre tract as deeded and described in Official Record 196, Page 143, Parcel Three, Tract II of the Logan County Records of Deeds and being more particularly described as follows:

Commencing on a MAG nail found on the south line of McArthur Township at the intersection of center-lines of County Highway 57 and U.S. Route 68.

THENCE, with the center-line of U.S. Route 68 (80 feet wide), the following three courses:

N 15°-12'-05"E, a distance of 379.94 feet to a MAG nail found at highway center-line station 61+00.

N 15°-10'-00"E, a distance of 2298.19 feet to a MAG nail found at highway center-line station 84+00.

N 15°-51'-05"E, a distance of 477.78 feet to a MAG nail set.

THENCE, S 71°-25'-55"E, a distance of 467.91 feet to a point in a pond at the TRUE POINT OF BEGINNING, passing 5/8 inch iron rods set at 40.04 feet and 305.62 feet.

THENCE, with the east line of the Joseph P. Wish original 13 acre tract (O.R. 380, Pg. 840), N 6°-48'-09"W, a distance of 122.39 feet to a 5/8 inch iron rod set, passing a 5/8 inch iron rod found at 74.77 feet.

THENCE, N 74°-34'-25"E, a distance of 328.57 feet to a 5/8 inch iron rod set.

THENCE, N 86°-24'-38"E, a distance of 290.40 feet to a 5/8 inch iron rod set.

THENCE, S 3°-35'-22"E, a distance of 300.00 feet to a 5/8 inch iron rod set.

THENCE, S 86°-24'-38"W, a distance of 290.40 feet to a 5/8 inch iron rod set.

THENCE, N 78°-04'-39"W, a distance of 142.14 feet to a 5/8 inch iron rod found.

THENCE, with the northerly line of the Joseph P. Wish 0.940 acre tract (O.R. 844, Pg. 941 & 943), N 71°-25'-55"W, a distance of 191.93 feet to the point of beginning.


Containing 3.576 acres.

The basis for bearings is the center-line of U.S. Route 68 north of center-line station 61+00, being N 15°-10'-00"E, and all other bearings are from angles and distances measured in a field survey by Lee Surveying and Mapping Co., Inc. on October 9, 2006.



ORIGINAL STAMP IN GREEN

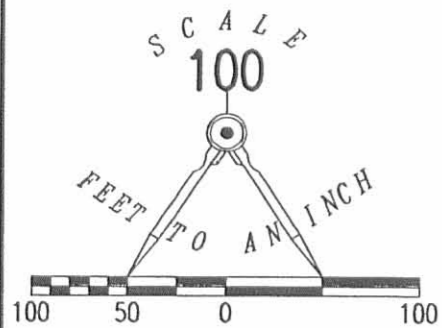
Description prepared by:


Jeffrey I. Lee
Professional Surveyor 6359
October 10, 2006

3215096A

INDEXED ON MAP
9214 2D

REC'D 10-11-06 SURV OK



- LEGEND
- 5/8 INCH IRON ROD SET
 - 5/8 INCH IRON ROD FOUND
 - ⊙ MAG NAIL SET
 - ⊘ MAG NAIL FOUND

STATION 84+00

STATION 61+00

2 WORKING DAYS
BEFORE YOU DIG
 CALL TOLL FREE 800-362-2764
 OHIO UTILITIES PROTECTION SERVICE.

BASIS FOR BEARINGS
N 15°10'00" E

N 15°12'05" E
379.94'

COUNTY HIGHWAY 57
 McARTHUR TOWNSHIP
 LAKE TOWNSHIP

68
 (80')

JOSEPH P. WISH
 ORIGINAL 13 ACRE TRACT
 O.R. 380, PG. 840

JOSEPH P. WISH
 ORIGINAL 13 ACRE TRACT
 O.R. 380, PG. 840

JOSEPH P. WISH
 0.940 ACRE
 O.R. 844, PG. 941
 O.R. 844, PG. 943

3.576 ACRES

POND

PAUL F. WISH, TRUSTEE AND
 MARJORIE V. WISH, TRUSTEE
 ORIGINAL 133.71 ACRE TRACT
 O.R. 196, PG. 143
 PARCEL THREE, TRACT II

A SURVEY OF 3.576 ACRES OUT OF THE
 PAUL F. WISH, TRUSTEE AND
 MARJORIE V. WISH, TRUSTEE
 ORIGINAL 133.71 ACRE TRACT
 OFFICIAL RECORD 196, PAGE 143
 PARCEL THREE, TRACT II
 VIRGINIA MILITARY SURVEY 9884
 McARTHUR TOWNSHIP
 LOGAN COUNTY, OHIO



ORIGINAL STAMP IN GREEN

SURVEYED BY:

(Signature)
 JEFFREY I. LEE
 PROFESSIONAL SURVEYOR 6359
 OCTOBER 9, 2006

COPYRIGHT 2006 BY:
 LEE SURVEYING & MAPPING CO., INC.
 117 North Madriver Street
 BELLEFONTAINE, OHIO 43311
 (937) 593-7335

KSR D1006 3215096A L-3215-3

INDEXED ON MAP
 9214 2P

REC'D 9-29-06 SMY OK

Lee Surveying and Mapping Co., Inc.

Land Surveys • Topography • Subdivisions • Construction Layout

117 N. Madriver St.
Bellefontaine OH 43311



Phone: (937) 593-7335
Fax: (937) 593-7444

1975 - 2005 - 30 YEARS OF EXCELLENCE

WISH 8.489 ACRES

Lying in Virginia Military Survey 9884, McArthur Township, Logan County, Ohio.

Being out of the Joseph P. Wish original 13 acre tract as deeded in Official Record 380, Page 840 and all of the 0.940 acre tract as deeded and described in Official Record 844, Pages 941 & 943 of the Logan County Records of Deeds and being more particularly described as follows:

Commencing at a MAG nail found at the intersection of center-lines of U.S. Route 68 (80 feet wide) and County Highway 57, on the south line of McArthur Township.

THENCE, with the center-line of U.S. Route 68 the following two courses:

N 15°-12'-05"E, a distance of 379.94 feet to a MAG nail found at Station 61 + 00.

N 15°-10'-00"E, a distance of 2109.32 feet to a MAG nail found at the TRUE POINT OF BEGINNING.

THENCE, with the center-line of U.S. Route 68, N 15°-10'-00"E, a distance of 188.87 feet to a MAG nail found at Station 84 + 00.

THENCE, with the center-line of U.S. Route 68, N 15°-51'-05"E, a distance of 477.78 feet to MAG nail set.

THENCE, S 71°-25'-55"E, a distance of 467.91 feet to a point in a pond, passing 5/8 inch iron rods set at 40.04 and 305.62 feet.

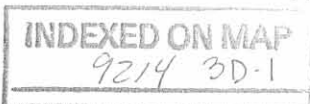
THENCE, with the lines of the remainder of the Paul F. Wish Trustee and Marjorie V. Wish, Trustee original 133.71 acre tract (O.R. 196, Pg. 143, Parcel Three, Tract II), the following three courses:

S 71°-25'-55"E, a distance of 191.93 feet to a 5/8 inch iron rod set.

S 17°-09'-31"W, a distance of 427.03 feet to a 5/8 inch iron rod found.

S 6°-48'-09"E, a distance of 134.35 feet to a 5/8 inch iron rod found.

THENCE, with the north line of the Robert Dean Dodds, Trustee of the Robert Dean Dodds Trust Dated September 23, 2004 40.009 acre tract (O.R. 744, Pg. 809, Tract III), S 82°-27'-17"W, a distance of 172.23 feet to a 5/8 inch iron rod set.



Lee Surveying and Mapping Co., Inc.

Land Surveys • Topography • Subdivisions • Construction Layout

117 N. Madriver St.
Bellefontaine OH 43311



Phone: (937) 593-7335
Fax: (937) 593-7444

1975 - 2005 - 30 YEARS OF EXCELLENCE

THENCE, with the lines of the Charles M. Bailey 2.500 acre tract (O.R. 527, Pg. 888), the following two courses:

N 7°-32'-43"W, a distance of 200.00 feet to a 5/8 inch iron rod set.

S 82°-27'-17"W, a distance of 502.70 feet to the point of beginning, passing a 5/8 inch iron rod set at 453.92 feet.


Containing 8.489 acres of which 0.604 acre is within the highway right-of-way.

The basis for bearings is the center-line of U.S. 68 being N 15°-10'-00"E and all other bearings are from angles and distances measured in a field survey by Lee Surveying and Mapping Co., Inc. on July 28, 2006.

Description prepared by:



ORIGINAL STAMP IN GREEN


Jeffrey I. Lee
Professional Surveyor 6359
September 28, 2006

3215096B

MEMBER: AMERICAN CONGRESS ON SURVEYING & MAPPING (ACSM) • NATIONAL SOCIETY OF PROFESSIONAL SURVEYORS (NSPS)
PROFESSIONAL LAND SURVEYORS OF OHIO (PLSO) • SURVEYORS HISTORICAL SOCIETY

INDEXED ON MAP

9214 3D-2

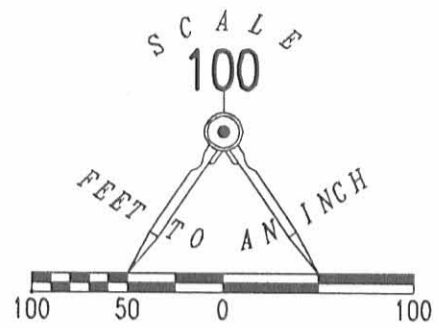
REC'D 9-29-06 SMY OK

LEGEND

- 5/8 INCH IRON ROD SET
- 5/8 INCH IRON ROD FOUND
- ⊙ MAG NAIL SET
- ⊘ MAG NAIL FOUND



JOSEPH P. WISH
ORIGINAL 13 ACRE TRACT
O.R. 380, PG. 840



STATION 84+00

8.489 ACRES

OF WHICH 0.604 ACRE IS WITHIN THE
HIGHWAY RIGHT-OF-WAY

JOSEPH P. WISH
ORIGINAL 13 ACRE TRACT
O.R. 380, PG. 840

JOSEPH P. WISH
0.940 ACRE
O.R. 844, PG. 941
O.R. 844, PG. 943

CHARLES M. BAILEY
2.500 ACRE TRACT
O.R. 527, PG. 888

ROBERT DEAN DODDS, TRUSTEE OF THE ROBERT DEAN DODDS TRUST DATED
SEPTEMBER 23, 2004
40.009 ACRE TRACT
O.R. 744, PG. 809
TRACT 111

PAUL F. WISH, TRUSTEE AND MARJORIE
V. WISH, TRUSTEE
ORIGINAL 133.71 ACRE TRACT
O.R. 196, PG. 143
PARCEL THREE, TRACT 11

A SURVEY OF 8.489 ACRES OUT OF THE
 JOSEPH P. WISH
 ORIGINAL 13 ACRE TRACT
 OFFICIAL RECORD 380, PAGE 840
 AND ALL OF THE
 JOSEPH P. WISH
 0.940 ACRE
 OFFICIAL RECORD 844, PAGE 941
 OFFICIAL RECORD 844, PAGE 943
 VIRGINIA MILITARY SURVEY 9884
 McARTHUR TOWNSHIP
 LOGAN COUNTY, OHIO

SURVEYED BY:

Jeffrey I. Lee
 JEFFREY I. LEE
 PROFESSIONAL SURVEYOR 6359
 JULY 28, 2006
 REVISED SEPTEMBER 28, 2006



INDEXED ON MAP

9214 3P

COPYRIGHT 2006 BY:
 LEE SURVEYING & MAPPING CO., INC.
 117 North Madriver Street
 BELLEFONTAINE, OHIO 43311
 (937) 593-7335

ADW/KSR D0906 3215096B L-3215-3

2 WORKING DAYS
BEFORE YOU DIG
 CALL TOLL FREE **800-362-2764**
 OHIO UTILITIES PROTECTION SERVICE.

REC'D 8-4-06 SMC

Lee Surveying and Mapping Co., Inc.

Land Surveys • Topography • Subdivisions • Construction Layout

117 N. Madriver St.
Bellefontaine OH 43311



Phone: (937) 593-7335
Fax: (937) 593-7444

1975 - 2005 - 30 YEARS OF EXCELLENCE

**WISH
6.349 ACRES**

Lying in Virginia Military Survey 9884, McArthur Township, Logan County, Ohio.

Being out of the Joseph P. Wish original 13 acre tract as deeded in Official Record 380, Page 840 of the Logan County Records of Deeds and being more particularly described as follows:

Commencing at a MAG nail found at the intersection of center-lines of U.S. Route 68 (80 feet wide) and County Highway 57, on the south line of McArthur Township.

THENCE, with the center-line of U.S. Route 68 the following two courses:

N 15°-12'-05"E, a distance of 379.94 feet to a MAG nail found at Station 61 + 00.

N 15°-10'-00"E, a distance of 2109.32 feet to a MAG nail found at the TRUE POINT OF BEGINNING.

THENCE, with the center-line of U.S. Route 68, N 15°-10'-00"E, a distance of 188.87 feet to a MAG nail found at Station 84 + 00.

THENCE, with the center-line of U.S. Route 68, N 15°-51'-05"E, a distance of 167.75 feet to a MAG nail found.

THENCE, S 80°-56'-26"E, a distance of 320.08 feet to a 5/8 inch iron rod set, passing a 5/8 inch iron rod set at 40.28 feet.

THENCE, N 9°-03'-34"E, a distance of 168.60 feet to a 5/8 inch iron rod set.

THENCE, N 80°-56'-26"W, a distance of 300.00 feet to a MAG nail found, passing a 5/8 inch iron rod set at 259.72 feet.

THENCE, with the center-line of U.S. Route 68, N 15°-51'-05"W, a distance of 140.24 feet to a MAG nail set.

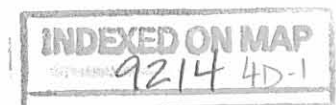
THENCE, S 71°-25'-55"E, a distance of 467.91 feet to a point in a pond, passing 5/8 inch iron rods set at 40.04 and 305.62 feet.

THENCE, with the west line of the Paul F. Wish Trustee and Marjorie V. Wish, Trustee original 133.71 acre tract (O.R. 196, Pg. 143, Parcel Three, Tract II), S 6°-48'-09"E, a distance of 606.82 feet to a 5/8 inch iron rod found, passing a 5/8 inch iron rod found at 472.47 feet.

THENCE, with the north line of the Robert Dean Dodds, Trustee of the Robert Dean Dodds Trust Dated September 23, 2004 40.009 acre tract (O.R. 744, Pg. 809, Tract III), S 82°-27'-17"W, a distance of 172.23 feet to a 5/8 inch iron rod set.

THENCE, with the lines of the Charles M. Bailey 2.500 acre tract (O.R. 527, Pg. 888), the following two courses:

N 7°-32'-43"W, a distance of 200.00 feet to a 5/8 inch iron rod set.



Lee Surveying and Mapping Co., Inc.

Land Surveys • Topography • Subdivisions • Construction Layout

117 N. Madriver St.
Bellefontaine OH 43311



Phone: (937) 593-7335
Fax: (937) 593-7444

1975 - 2005 - 30 YEARS OF EXCELLENCE

S 82°-27'-17"W, a distance of 502.70 feet to the point of beginning, passing a 5/8 inch iron rod set at 453.92 feet.

Containing 6.349 acres of which 0.448 acre is within the highway right-of-way.

The basis for bearings is the center-line of U.S. 68 being N 15°-10'-00"E and all other bearings are from angles and distances measured in a field survey by Lee Surveying and Mapping Co., Inc. on July 28, 2006.



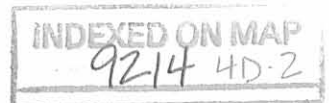
ORIGINAL STAMP IN GREEN

Description prepared by:

A handwritten signature in black ink, appearing to read 'Jeffrey I. Lee'.

Jeffrey I. Lee
Professional Surveyor 6359
August 1, 2006

L-3215076



REC'D 8-4-06 SMM OK
Lee Surveying and Mapping Co., Inc.

Land Surveys • Topography • Subdivisions • Construction Layout

117 N. Madriver St.
Bellefontaine OH 43311



Phone: (937) 593-7335
Fax: (937) 593-7444

1975 - 2005 - 30 YEARS OF EXCELLENCE

**WISH, TRUSTEE
0.940 ACRES**

Lying in Virginia Military Survey 9884, McArthur Township, Logan County, Ohio.

Being out of Paul F. Wish, Trustee and Marjorie V. Wish, Trustee original 133.71 acre tract as deeded in Official Record 196, Page 143, Parcel Three, Tract II of the Logan County Records of Deeds and being more particularly described as follows:

Commencing at a MAG nail found at the intersection of center-lines of U.S. Route 68 (80 feet wide) and County Highway 57, on the south line of McArthur Township.

THENCE, with the center-line of U.S. Route 68 the following two courses:

N 15°-12'-05"E, a distance of 379.94 feet to a MAG nail found at Station 61 + 00.

N 15°-10'-00"E, a distance of 2298.19 feet to a MAG nail found at Station 84 + 00.

N 15°-51'-05"E, a distance of 477.78 feet to a MAG nail set.

THENCE, S 71°-25'-55"E, a distance of 467.91 feet to a point in a pond at THE TRUE POINT OF BEGINNING, passing 5/8 inch iron rods set at 40.04 and 305.62 feet.

THENCE, S 71°-25'-55"E, a distance of 191.93 feet to a 5/8 inch iron rod set.

THENCE, S 17°-09'-31"W, a distance of 427.03 feet to a 5/8 inch iron rod found.

THENCE, with the east line of the Joseph P. Wish 13 acre tract (O.R. 380, Pg. 840), N 6°-48'-09"W, a distance of 472.47 feet to the point of beginning.

Containing 0.940 acre.

The basis for bearings is the center-line of U.S. 68 being N 15°-10'-00"E and all other bearings are from angles and distances measured in a field survey by Lee Surveying and Mapping Co., Inc. on July 28, 2006.

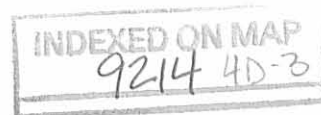


ORIGINAL STAMP IN GREEN

Description prepared by:

A handwritten signature in black ink, appearing to read 'Jeffrey I. Lee'.
Jeffrey I. Lee
Professional Surveyor 6359
August 1, 2006

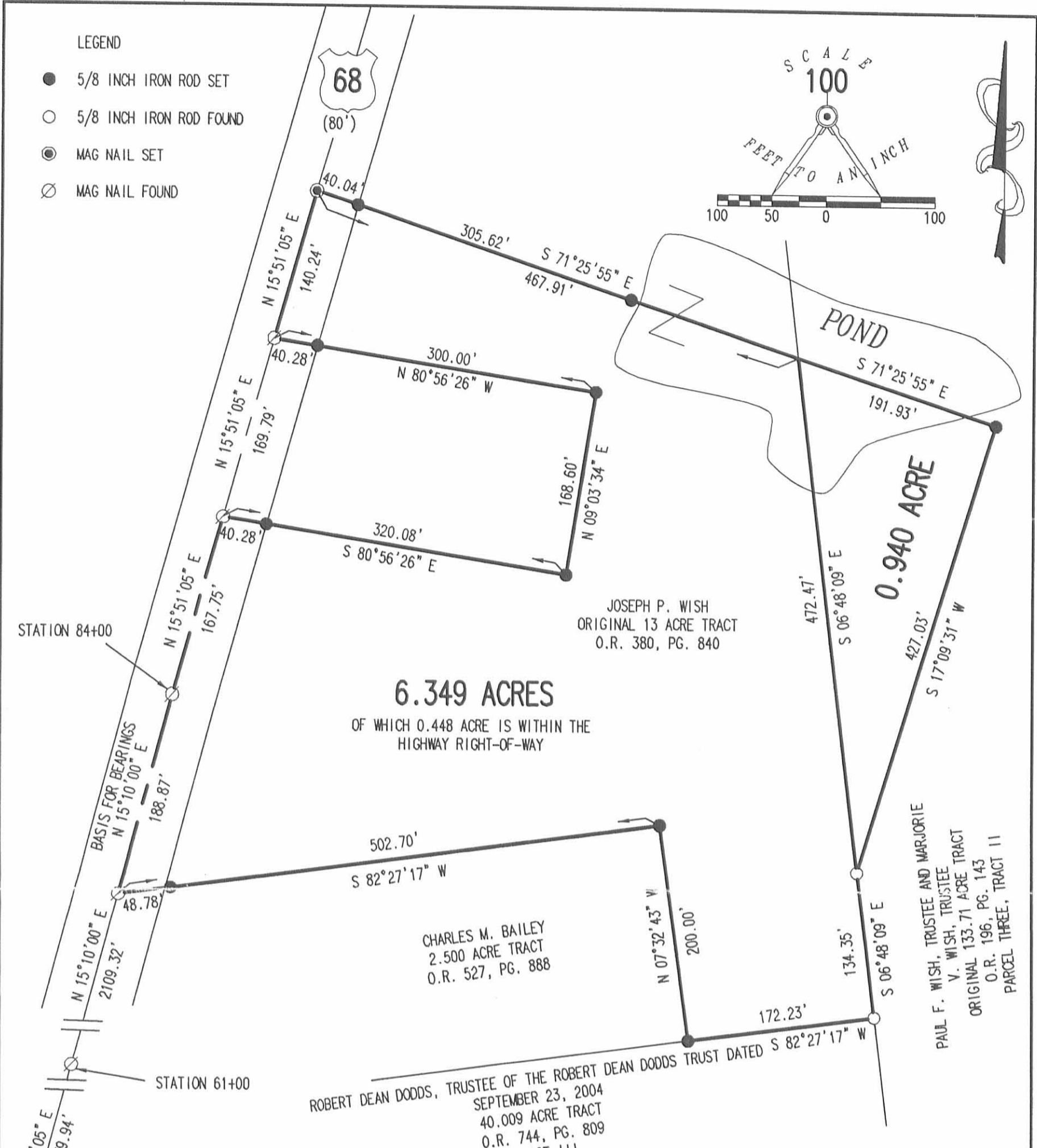
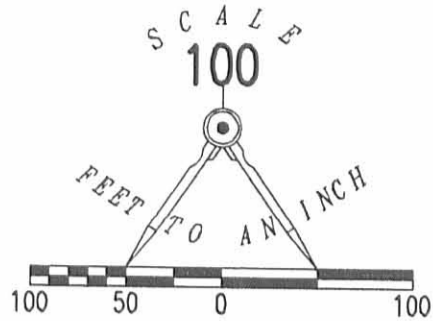
L-3215076



REC'D 8-4-06 SUMMER

LEGEND

- 5/8 INCH IRON ROD SET
- 5/8 INCH IRON ROD FOUND
- ⊙ MAG NAIL SET
- ⊘ MAG NAIL FOUND



A SURVEY OF A 6.349 ACRE TRACT OUT OF THE
 JOSEPH P. WISH ORIGINAL 13 ACRE TRACT
 OFFICIAL RECORD 380, PAGE 840
 AND A 0.940 ACRE TRACT OUT OF THE
 PAUL F. WISH, TRUSTEE
 AND MARJORIE V. WISH, TRUSTEE
 ORIGINAL 133.71 ACRE TRACT
 OFFICIAL RECORD 196, PAGE 143, PARCEL THREE, TRACT 11
 VIRGINIA MILITARY SURVEY 9884
 McARTHUR TOWNSHIP
 LOGAN COUNTY, OHIO

SURVEYED BY:

Jeffrey I. Lee
 JEFFREY I. LEE
 PROFESSIONAL SURVEYOR 6359
 JULY 28, 2006



ORIGINAL STAMP IN GREEN

COPYRIGHT 2006 BY:

LEE SURVEYING & MAPPING CO., INC.
 117 North Madriver Street
 BELLEFONTAINE, OHIO 43311
 (937) 593-7335

2 WORKING DAYS
BEFORE YOU DIG
 CALL TOLL FREE 800-362-2764
 OHIO UTILITIES PROTECTION SERVICE.

INDEXED ON MAP
 9214 4P

ADW D0806 3215076 L-3215076-2

REC'D 9-15-98 SWY OK JCH

LESLIE H. GEESLIN

REGISTERED SURVEYOR 5248

P. O. BOX 274

RUSHSVLVANIA, OHIO 43347

TELEPHONE: (937) 468-2793

FAX: (937) 468-2082

WISH SURVEY

September 15, 1998

The following described real estate situated in the State of Ohio, County of Logan, Township of McArthur, being part of Virginia Military Survey 9884 and more particularly described as follows:

Beginning at a R. R. spike found in the centerline of U. S. Route 68 at the northwest corner of Robert D. Dodds' 49.009 acre tract as described in O. R. Vol. 84 Page 195.

Thence with the centerline of said U. S. R. 68 N. 13° 45' 31" E. 405.77 feet to a magnetic nail set.

Thence again with the centerline of said U. S. R. 68 N. 14° 26' 42" E. 731.18 feet to a magnetic nail set at the southwest corner of West Ohio Annual Conference of United Methodist Church's 50.00 acre tract as described in O. R. Vol. 52 Page 758.

Thence with the south line of said 50.00 acre tract N. 81° 13' 30" E. 989.79 feet to a 5/8 inch iron bar set, passing a 16 inch concrete post found at 32.00 feet and the right of way of said U. S. R. 68 at 43.53 feet.

Thence S. 4° 04' 10" E. 998.65 feet to a 5/8 inch iron bar set.

Thence S. 88° 34' 59" W. 328.97 feet to a 5/8 inch iron bar set.

Thence N. 89° 28' 52" W. 269.00 feet to a 5/8 inch iron bar set.

Thence S. 8° 12' 46" E. 134.35 feet to a 5/8 inch iron bar found at said Dodds' northeast corner.

Thence with said Dodds' north line S. 81° 01' 16" W. 758.59 feet to the place of beginning, passing a 5/8 inch iron bar found at 715.23 feet.

Containing 26.853 acres more or less of which 1.044 acres are in the right of way of U. S. Route 68.

The above described 26.853 acre tract being all (13.037 acre) of Paul F. Wish, Trustee and Marjorie V. Wish, Trustee's 13 acre tract as described in O. R. Vol. 196 page 143 (Par. 1) and 13.816 acres is out of said Wish's 133.71 acre tract as described in O. R. Vol. 196 page 143 (Par. 3, Tr. II).

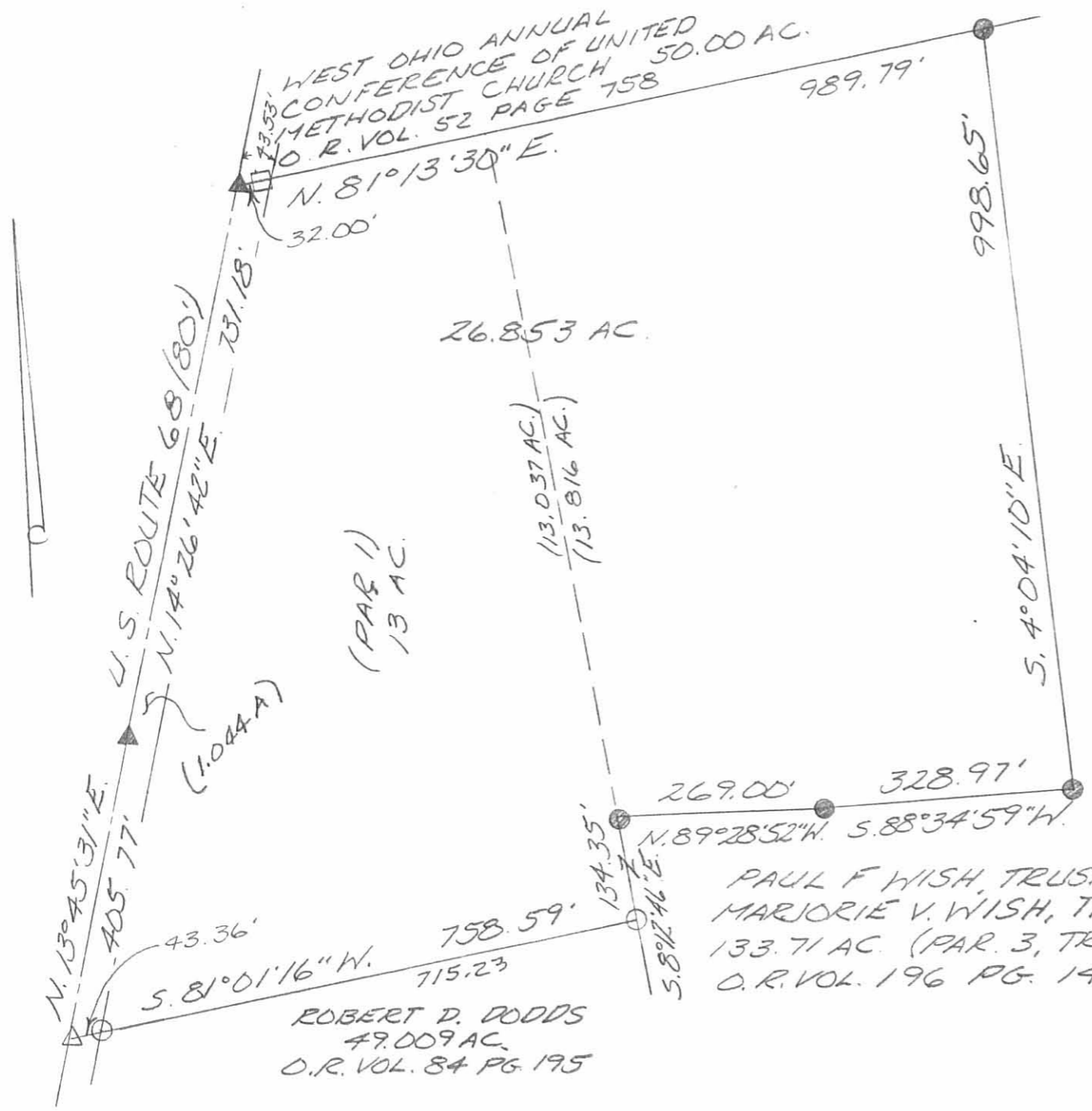
Bearings are based on an assumed bearing (N. 81° 13' 30" E.) for the south line of West Ohio Annual Conference of United Methodist Church's 50.00 acre tract as described in O. R. Vol. 52 Page 758 in this field survey by Leslie H. Geeslin, Reg. Surveyor 5248 on September 15, 1998



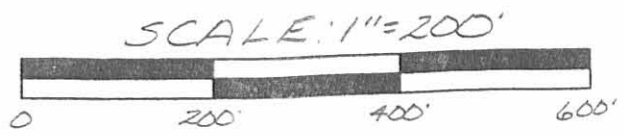
MCARTHUR21JWISH.SAM

INDEXED ON MAP
9214 5D

Leslie H. Geeslin



- LEGEND:
- = 16 INCH CONCRETE POST FOUND
 - △ = R.R. SPIKE FOUND
 - = 5/8 INCH IRON BAR FOUND
 - ▲ = MAGNETIC NAIL SET
 - ⊙ = 5/8 INCH IRON BAR SET



SURVEY OF 26.853 ACRES IN VIRGINIA MILITARY SURVEY 9884, McARTHUR TOWNSHIP, LOGAN COUNTY, OHIO FOR JOE WISH ON SEPTEMBER 15, 1998



INDEXED ON MAP
9214 SR

Leslie H. Geeslin
LESLIE H. GEESLIN
RUSHSVLVANIA, O
PH (937) 468-2793
FAX (937) 468-2080

REC'D 9-9-02 SMY OK

Lee Surveying and Mapping Co., Inc.

Land Surveys • Topography • Subdivisions • Construction Layout

117 N. Madriver St.
Bellefontaine OH 43311



Phone: (937) 593-7335
Fax: (937) 593-7444

WISH 3.760 ACRES

Lying in Virginia Military Survey 9884, McArthur Township, Logan County, Ohio.

Being out of the Joseph P. Wish 13.0 acre tract as deeded and described in Official Record 380, Page 840 of the Logan County Records of Deeds and being more particularly described as follows:

Beginning at a MAG nail found on the south line of McArthur Township at the intersection of the center-lines of County Highway 57 and U.S. Route 68.

THENCE, with the center-line of U.S. Route 68 (80 feet wide), N 15°-12'-05" E, a distance of 379.94 feet to a railroad spike found at highway center-line station 61+00.

THENCE, continuing with the center-line of U.S. Route 68, N 15°-10'-00" E, a distance of 2298.19 feet to a MAG nail found at highway center-line station 84+00.

THENCE, continuing with the center-line of U.S. Route 68, N 15°-51'-05" E, a distance of 367.75 feet to a MAG nail set at the TRUE POINT OF BEGINNING.

THENCE, with the center-line of U.S. Route 68, N 15°-51'-05" E, a distance of 363.46 feet to a MAG nail found.

THENCE, with the south line of the West Ohio Annual Conference of United Methodist Church original 50.00 acre tract (O.R. 52, Pg. 758), N 82°-39'-22" E, a distance of 325.19 feet to a 5/8 inch iron rod found, passing a 16 inch concrete post found at 32.15 feet.

THENCE, with the west line of the Paul F. Wish, Trustee, original 133.71 acre tract (O.R. 196, Pg. 143, Parcel Three, Tract II), S 6°-48'-09" E, a distance of 470.66 feet to a point in a pond, passing a 5/8 inch iron rod set at 362.66 feet.

THENCE, N 80°-56'-26" W, a distance of 483.58 feet to the point of beginning, passing 5/8 inch iron rods set at 183.00 feet and at 443.30 feet.

Containing 3.760 acres, of which 0.339 acre is within the highway right-of-way.

The basis for bearings is the center-line of U.S. Route 68 north of center-line station 61+00, being N 15°-10'-00" E, and all other bearings are from angles and distances measured in a field survey by Lee Surveying and Mapping Co., Inc. on September 3, 2002.

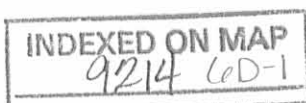
Description prepared by:

Jeffrey I. Lee
Professional Surveyor 6359
September 5, 2002



ORIGINAL STAMP IN GREEN

L-3215

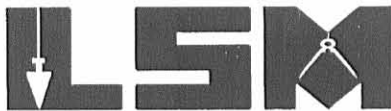


REC'D 9-9-02 SMY OK

Lee Surveying and Mapping Co., Inc.

Land Surveys • Topography • Subdivisions • Construction Layout

117 N. Madriver St.
Bellefontaine OH 43311



Phone: (937) 593-7335
Fax: (937) 593-7444

WISH 1.200 ACRES

Lying in Virginia Military Survey 9884, McArthur Township, Logan County, Ohio.

Being out of the Joseph P. Wish 13.0 acre tract as deeded and described in Official Record 380, Page 840 of the Logan County Records of Deeds and being more particularly described as follows:

Beginning at a MAG nail found on the south line of McArthur Township at the intersection of the center-lines of County Highway 57 and U.S. Route 68.

THENCE, with the center-line of U.S. Route 68 (80 feet wide), N 15°-12'-05" E, a distance of 379.94 feet to a railroad spike found at highway center-line station 61+00.

THENCE, continuing with the center-line of U.S. Route 68, N 15°-10'-00" E, a distance of 2298.19 feet to a MAG nail found at highway center-line station 84+00.

THENCE, continuing with the center-line of U.S. Route 68, N 15°-51'-05" E, a distance of 167.75 feet to a MAG nail set at the TRUE POINT OF BEGINNING.

THENCE, with the center-line of U.S. Route 68, N 15°-51'-05" E, a distance of 169.79 feet to a MAG nail set.

THENCE, S 80°-56'-26" E, a distance of 300.00 feet to a 5/8 inch iron rod set, passing a 5/8 inch iron rod set at 40.28 feet.

THENCE, S 9°-03'-34" W, a distance of 168.60 feet to a 5/8 inch iron rod set.

THENCE, N 80°-56'-26" W, a distance of 320.08 feet to the point of beginning, passing a 5/8 inch iron rod set at 279.80 feet.


Containing 1.200 acres, of which 0.156 acre is within the highway right-of-way.

The basis for bearings is the center-line of U.S. Route 68 north of center-line station 61+00, being N 15°-10'-00" E, and all other bearings are from angles and distances measured in a field survey by Lee Surveying and Mapping Co., Inc. on September 3, 2002.

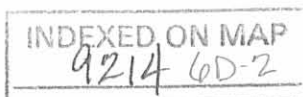
Description prepared by:



ORIGINAL STAMP IN GREEN

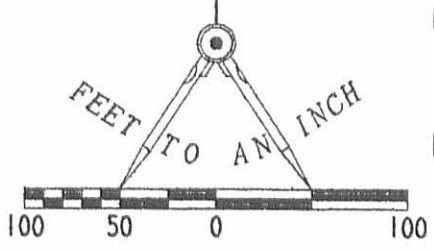

Jeffrey I. Lee
Professional Surveyor 6359
September 5, 2002

L-3215



REC'D 9-9-02 SMJ OK

SCALE
100
FEET TO AN INCH



LEGEND

- 5/8 INCH IRON ROD SET
- 5/8 INCH IRON ROD FOUND
- ⊙ MAG NAIL SET
- MAG NAIL FOUND
- ⊗ RAILROAD SPIKE FOUND
- ⊕ 16" CONCRETE POST FOUND

WEST OHIO ANNUAL CONFERENCE
OF UNITED METHODIST CHURCH
ORIG. 50.00 ACRES
O.R. 52, PG. 758

PAUL F. WISH, TRUSTEE
ORIG. 133.71 ACRES
O.R. 196, PG. 143
PARCEL THREE
TRACT 11

3.760 ACRES
OF WHICH 0.339 ACRE IS WITHIN
THE HIGHWAY RIGHT-OF-WAY

1.200 ACRES
OF WHICH 0.156 ACRE IS WITHIN
THE HIGHWAY RIGHT-OF-WAY

JOSEPH P. WISH
ORIG. 13.0 ACRES
O.R. 380, PG. 840

CHARLES M. BAILEY
2.500 ACRES
O.R. 527, PG. 888

**SURVEY OF TWO TRACTS OUT OF
THE JOSEPH P. WISH
ORIG. 13.0 ACRE TRACT
OFFICIAL RECORD 380, PAGE 840
VIRGINIA MILITARY SURVEY 9884
McARTHUR TOWNSHIP
LOGAN COUNTY, OHIO**



SURVEYED BY:

[Signature]
JEFFREY I. LEE
PROFESSIONAL SURVEYOR 6359
SEPTEMBER 3, 2002

COPYRIGHT 2002 BY:
LEE SURVEYING & MAPPING CO., INC.
117 North Madriver Street
BELLEFONTAINE, OHIO 43311
(937) 593-7335

INDEXED ON MAP
9214 LP

ORIGINAL STAMP IN GREEN

D 407

JWISH2

L-3215-3



McARTHUR TOWNSHIP
COUNTY HIGHWAY 57

LAKE TOWNSHIP

(80')

30.21'
N 15°51'05"E

32.15'

N 82°39'22"E
325.19'

N 15°51'05"E
363.46'

470.66'
S 06°48'09"E

N 15°51'05"E
169.79'

40.28'

S 80°56'26"E 483.58'
N 80°56'26"W 300.00'

183.00'

POND
APPROXIMATE
LOCATION

320.08'
N 80°56'26"W

168.60'
S 09°03'34"W

N 15°51'05"E
167.75'

STA. 84+00

(BASIS FOR BEARINGS)
N 15°10'00"E
2298.19'

N 15°12'05"E
379.94'

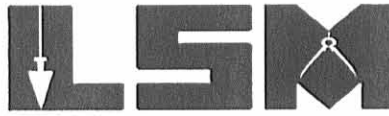
STA. 61+00

REV'D 9-21-06 SML/OK

Lee Surveying and Mapping Co., Inc.

Land Surveys • Topography • Subdivisions • Construction Layout

117 N. Madriver St.
Bellefontaine OH 43311



Phone: (937) 593-7335
Fax: (937) 593-7444

1975-2005 - 30 YEARS OF EXCELLENCE

WISH

30.00 FEET WIDE INGRESS/EGRESS EASEMENT

Lying in Virginia Military Survey 9884, McArthur Township, Logan County, Ohio.

Being a 30.00 feet wide ingress/egress easement over the Joseph P. Wish original 13 acre tract as deeded in Official Record 380, Page 840 of the Logan County Records of Deeds and being more particularly described as follows:

Commencing on a MAG nail found on the intersection of center-lines of U.S. Route 68 (80 feet wide) and County Highway 57, on the south line of McArthur Township.

THENCE, with the center-line of U.S. Route 68 the following three courses:

N 15°-12'-05"E, a distance of 379.94 feet to a MAG nail found at Station 61 + 00.

N 15°-10'-00"E, a distance of 2298.19 feet to a MAG nail found at Station 84 + 00.

N 15°-51'-05"E, a distance of 337.54 feet to a MAG nail found at the TRUE POINT OF BEGINNING.

THENCE, with the center-line of U.S. Route 68, N 15°-51'-05"E, a distance of 30.21 feet to a MAG nail found.

THENCE, S 80°-56'-26"E, a distance of 245.33 feet to a point.

THENCE, N 35°-49'-42"E, a distance of 72.65 feet to a point.

THENCE, S 71°-25'-55"E, a distance of 31.41 feet to a point.

THENCE, S 35°-49'-42"W, a distance of 100.44 feet to a point.

THENCE, with the north line of a proposed 1.200 acre tract, N 80°-56'-26"W, a distance of 267.37 feet to the point of beginning, passing a 5/8 inch iron rod set at 227.09 feet.

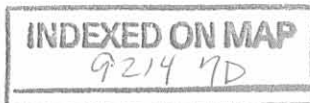
The basis for bearings is the center-line of U.S. 68 being N 15°-10'-00"E and all other bearings are from angles and distances measured in a field survey by Lee Surveying and Mapping Co., Inc. on July 28, 2006 and September 20, 2006.



ORIGINAL STAMP IN GREEN

Description prepared by:

Jeffrey I. Lee
Jeffrey I. Lee
Professional Surveyor 6359
September 20, 2006



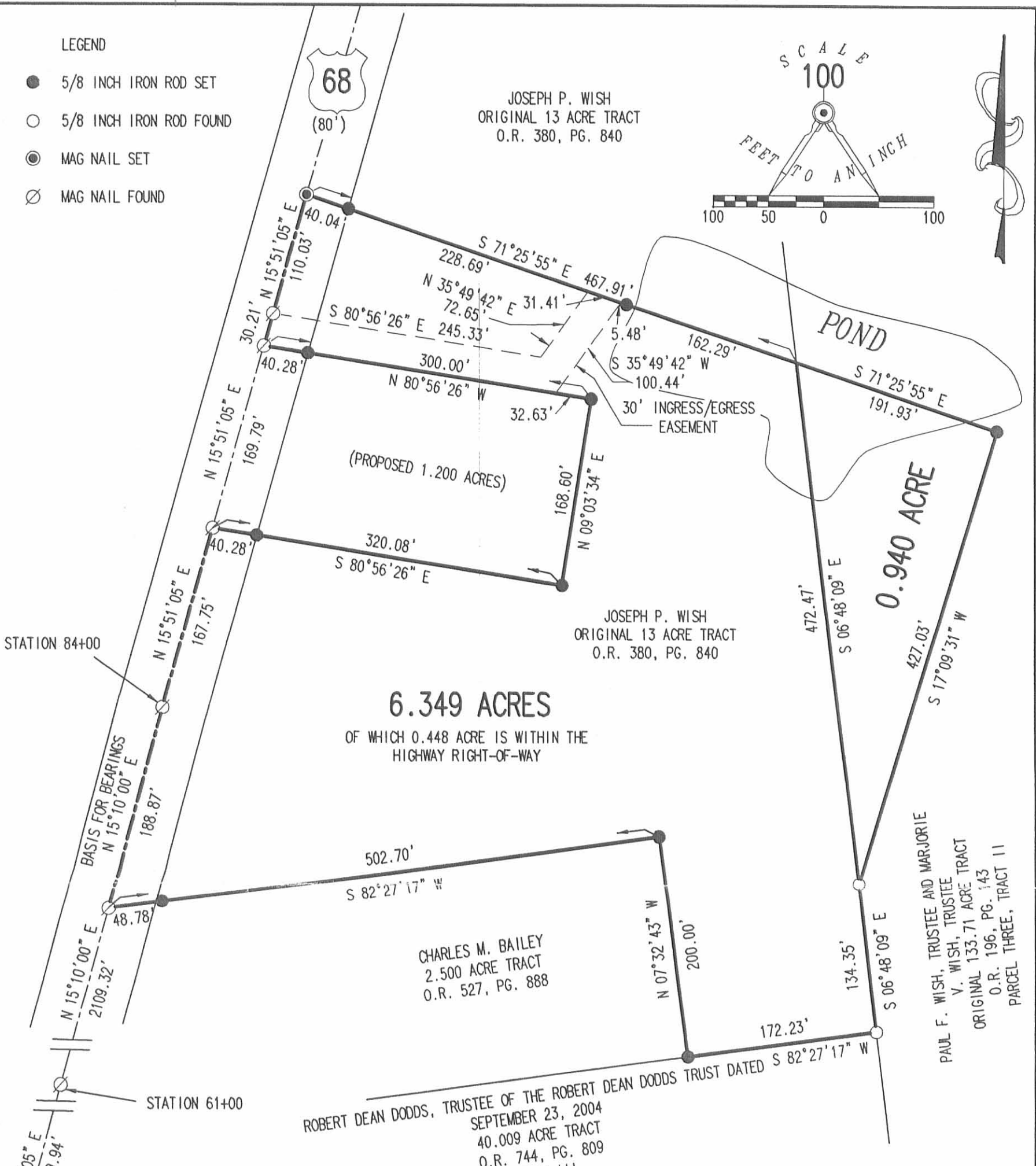
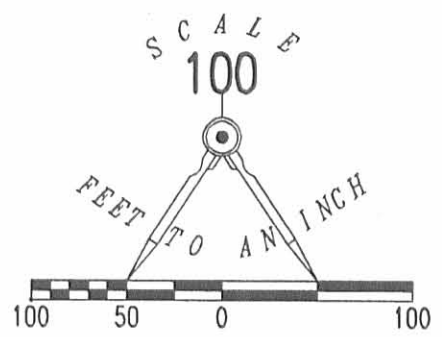
3215096

REC'D 9-21-06 SML/OLC

LEGEND

- 5/8 INCH IRON ROD SET
- 5/8 INCH IRON ROD FOUND
- ⊙ MAG NAIL SET
- ⊘ MAG NAIL FOUND

JOSEPH P. WISH
ORIGINAL 13 ACRE TRACT
O.R. 380, PG. 840



A SURVEY OF A 6.349 ACRE TRACT OUT OF THE
JOSEPH P. WISH
 ORIGINAL 13 ACRE TRACT
 OFFICIAL RECORD 380, PAGE 840
 AND A 0.940 ACRE TRACT OUT OF THE
PAUL F. WISH, TRUSTEE
 AND **MARJORIE V. WISH, TRUSTEE**
 ORIGINAL 133.71 ACRE TRACT
 OFFICIAL RECORD 196, PAGE 143, PARCEL THREE, TRACT II
 VIRGINIA MILITARY SURVEY 9884
McARTHUR TOWNSHIP
LOGAN COUNTY, OHIO

SURVEYED BY:

Jeffrey I. Lee
JEFFREY I. LEE
 PROFESSIONAL SURVEYOR 6359
 JULY 28, 2006
 REVISED SEPTEMBER 20, 2006 (30' INGRESS/EGRESS EASEMENT)



COPYRIGHT 2006 BY:
LEE SURVEYING & MAPPING CO., INC.
 117 North Madriver Street
 BELLEFONTAINE, OHIO 43311
 (937) 593-7335

2 WORKING DAYS
BEFORE YOU DIG
 CALL TOLL FREE **800-362-2764**
 OHIO UTILITIES PROTECTION SERVICE.

INDEXED ON MAP
 9214 7P

ORIGINAL STAMP IN GREEN

ADW/KSR D0906 3215096 L-3215-3