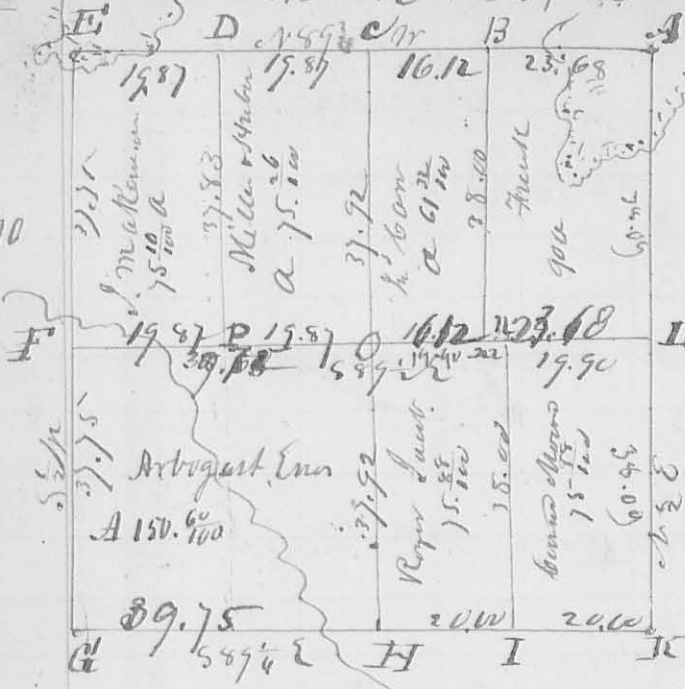


3110

S 30. 74. 12 13 N. 12



The annexed diagram represents the subdivision of S 30. 74. 12 13 N. 12 made Nov. 1829 for Isaac Rogers & others. Magnetic Meridian.

Description of Canees.
 A Stem in a prairie.
 B Stem in a field.
 C Bur Oak 22 inches diameter N 22 W 50 Links, Walnut 15 inches diameter S 18 W 60 Links

- D Elm 8 inches 20th S 52 W 9 Links, Stem in a Prairie.
- F Hickory 12 in. Diameter S 51 E 50 Links, Stem.
- G White oak 12 in. " South 26 Links, (hickory count N 76 E 14 S
- H White oak 16 " 20 S 20 W 8 Links, White oak 20 S. D N 47 E 28 S
- I White oak 20 " " N 52 W 34 " White oak 20 " " N 31 E 33 S
- K Little tree 20 " " S 7 E 26 " White oak 12 " " N 53 W 40 S
- L Hickory 6 inches dia. N 72 E 24 Links, W. O 12 " " N 45 W 10
- M Bl Oak 24 data 56 E 17 1/2 " W. O 15 " " " " " 39.
- m White oak 15 " " N 3 E 12 1/2 " " " " " " "
- P White oak 15 " " " N 21 W 23. " " W. O. 24 " " S 43 E 30

071

8464

Surveyed Nov. 2, 1840 for S. G. Lawson, Chiswell Barlett, Surveyor N^o 9507 as follows. Beginning at a Sugar & White Oak in the West line and S 11¹/₂ E 109 poles from the NW corner; thence S 11¹/₂ E 28 poles crossing the Kenton Road and a branch several times to an Ash, Beech & Red Oak, SW corner of the Survey; thence N 78¹/₂ E 802 poles to 3 Bur Oaks & Beech, North side of a pond, S. E. corner to said Survey; thence N 11¹/₂ E 285 poles to a stake; corner to part of said tract formerly owned by Matthew Birney; at 3 Bur; thence S 78¹/₂ E 40 poles to the beginning. — Then from the center of the West line Beginning at a hewn Ash Hickory and Beech, 142 poles from either corner thence N 78¹/₂ E 40 poles crossing several branches to 2 Bur Oaks, N 11¹/₂ E 145

145 poles from the S.E. corner of the Survey; and S11¹/₂E 1100 poles from the State at 2 Bunks; this line passes 3 Sugar at 124 poles from which a line runs N11¹/₂W 142 poles to 2 Bunks - and S11¹/₂E 143 poles to a White Oak and Ash in the original line - Then from said 3 Sugar, running N78¹/₂E at 138 poles passed a Dogwood 2 Sugar, & Beech from which a line runs N11¹/₂W 141 poles to a Beech Oak & White Oak; and S11¹/₂E 149 poles to a Sugar & Red Oak in the South line of the Survey; making the two Eastern lots 1100 poles wide; the S.E. lot contains 126¹/₂ ac; the N.E. 123¹/₂ ac; the N.W. lot contains 110¹/₂ ac & the S.E. 110¹/₂ ac - the Center lots have been changed by subsequent Survey -
 Tho. J. Hulton ch. man. Dear Hopkin, Sur. L.C.O

472

8465

Survey No 3. 1840 for J. P. Dawson or Agent for J. Fuller Survey 9908 as follows Beginning 3 bur. Oaks & Beech N.W. corner to the Survey; thence N79¹/₂E 400 poles crossing a big road at 310 poles to a buck Ash and sugar - thence N11¹/₂W 386 poles crossing a big road at 100 poles to a Red Elm and small sugar; thence S78¹/₂E 400 poles to 2 Buck Sugar and Horn Beam; thence S11¹/₂E 394 poles to the beginning containing 975 ac. -
 Tho. J. Hulton ch. man. - Dear Hopkin, C. S. L. C. O.