

# Plat of Cherokee

8263



14
15
16
17
18
19
20
21

## Fountain

36	35	34	33	32	31	30	29	28
----	----	----	----	----	----	----	----	----

22
23
24
25
26
27

### Notes.

Main Street runs N & S. Fountain Street crosses it at right angles, and all the alleys, and lots are laid off at right angles, and parallel with these Main Street is 70 feet wide and Fountain Street is 60 feet wider. The alleys are all 10 feet wide. - the lots are all 50 feet in front and extend back 165 feet except lots N 182 which front on Fountain Street 124 1/2 feet and extend back 50 feet

Main Street

13
12
11
10
9

8
7
6

5	4	3

Street

1	2
---	---

The is a stone placed at the south west corner of lot r<sup>o</sup> 1. - lots r<sup>o</sup> 28, 29, 30, 31, 32, 33, 34, 35 & 36 are on Alexander Thomson's land; lots r<sup>o</sup> 14, 15, 16, 17, 18, 19, 20 & 21 are Samuel A. Norton's land; all the others are on Robert Edmiston's land, and the whole plat is located on Robert Gambles Survey, r<sup>o</sup> 9904 on the waters of Cherokee-man's run, and is to be known by the name of Cherokee

I certify that the above is correctly laid by a scale of 100 feet to the inch, from actual survey made by me March 17 1832

William Thomson }  
 William Edmiston }  
 W.C.

J. M. Harmon  
 C. S. L. Co.

David Miller

Hay to  
Castell

Castell to Hay

Bellefontaine Feb 7 1836  
 Surveyed for Hays and Castell the three following lots  
 of land to wit Military Survey N<sup>o</sup> 9903 the first lot Be-  
 ginning at a stake in a prairie near a bunch of willow  
 center of the north line of said Survey, thence with said line  
 N 78<sup>o</sup> E 74<sup>3</sup>/<sub>10</sub> poles to a stake, corner to Castell, thence S 11<sup>o</sup> E  
 70 poles to a stake near a water Elm another of his corners  
 thence N 78<sup>o</sup> E 44 poles to a stake in said Castell, west line  
 thence with said line S 11<sup>o</sup> E 3<sup>3</sup>/<sub>10</sub> poles to a stake, thence S 71<sup>o</sup> W  
 118<sup>3</sup>/<sub>10</sub> poles to a W. Elm Jack Oak & Quaking asp all small -  
 thence N 11<sup>o</sup> W 73<sup>3</sup>/<sub>10</sub> poles to the beginning containing thirty six  
 acres Also Beginning at a stake in the north line  
 of said Survey S 78<sup>o</sup> W 118<sup>3</sup>/<sub>10</sub> poles from the N E corner thence  
 thence S 78<sup>o</sup> W 44 poles to a stake, thence S 11<sup>o</sup> E 70 poles to a water  
 Elm, thence N 78<sup>o</sup> E 44 poles to stake in a prairie, thence N 11<sup>o</sup> W  
 70 poles to the beginning containing 17<sup>1</sup>/<sub>2</sub> acres.  
 Also Beginning at a stone near a white oak  
 in the line of A. Elders land and 118<sup>3</sup>/<sub>10</sub> poles S 78<sup>o</sup> W from  
 said Elders N. E. corner thence N 78<sup>o</sup> E 44 poles to two  
 white oaks, thence N 11<sup>o</sup> W 7 poles to two Bar oaks, thence  
 S 78<sup>o</sup> W 44 poles to a stake in the edge of a prairie, thence  
 S 11<sup>o</sup> E to the beginning, containing 17<sup>1</sup>/<sub>2</sub> acres -  
 Feb 7. 1836 David Hopkins County Surveyor S. C.

Surveyed for James Collins 97<sup>1</sup>/<sub>100</sub> acres of ground as  
 follows Beginning at a stake on road westerly from the  
 N W corner of lot N<sup>o</sup> 36 of the town of Cherokee and in  
 a range with the front of said lot thence S 82<sup>o</sup> W 14<sup>3</sup>/<sub>10</sub>  
 poles to a stone near a Beech tree, thence S 4<sup>o</sup> E 10<sup>3</sup>/<sub>10</sub> poles, cross-  
 ing a spring branch to a stake, thence N 86<sup>o</sup> E 14<sup>3</sup>/<sub>10</sub> poles  
 to a stone, thence N 4<sup>o</sup> W 11<sup>3</sup>/<sub>10</sub> poles to the beginning contain-  
 ing 97<sup>1</sup>/<sub>100</sub> acres Feb 5. 1836 David Hopkins S. C.

Military Survey N<sup>o</sup> 881. Stewart & Coy -

Surveyed for James Stewart Beginning at a Red oak in  
 a NW direction from A. Georians Mill house in the Linn  
 Road, thence S 78<sup>o</sup> W 1 pole to a stake, thence N 12<sup>o</sup> W 9 poles, 11 links,  
 to stake, thence N 78<sup>o</sup> E 17 poles to stake, thence S 12<sup>o</sup> E 9 poles, 11 links,  
 to the beginning - one acre Feb 5. 1836 D Hopkins S. C.



Feb 1836 ✓

233

N<sup>o</sup> 310

8263

Surveyed for Robert Edmiston a lot of ground adjoining the town of Cherokee as follows Beginning at the S.E. corner of Lot N<sup>o</sup> 3 thence N 86° E 6 poles, thence N 46° 32 poles to a stake - thence S 78° W 16 2/10 poles to a stone, thence S 46° E 18 7/10 poles to a stake in the North Side of the North Alley of said town, thence thence N 86° E 10 poles to a stake parallel with the East line of Lot N<sup>o</sup> 3 above said, thence S 46° E 11 poles to the beginning. Containing 3 Acres 41 hundredths.

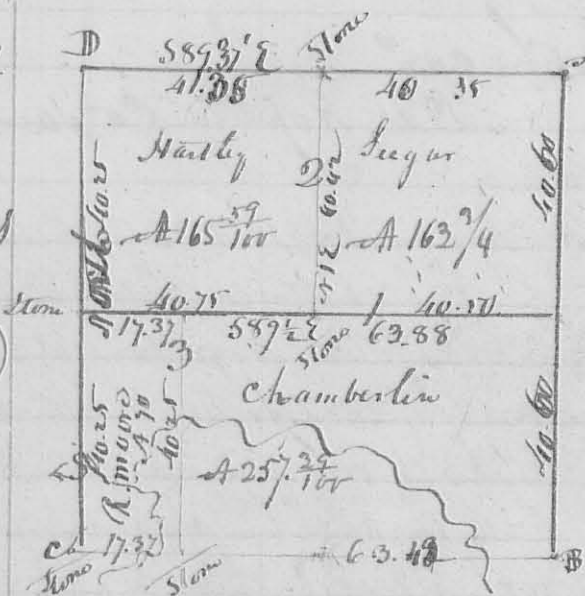
Feb 5. 1836

D. Hopkins County Surveyor &c

N<sup>o</sup> 311

S1353  
R14MRS

8370



Surveyed February 10<sup>th</sup> 1836 for Aaron Hartley and Chamberlin S12 S3 R14 MRS as follows Beginning at the N.E. Corner of the section at a Stone the original corner trees gone thence N 79 1/4° W 81 ch 20 links to a Stone bearing trees yet standing thence N 89 1/4° W 80 ch 57 Links cupping branch at 30 poles a tall pine and

another small branch to a Stone bearing trees yet standing - thence North 80 ch 57 Links cupping a branch at 31.32 & 36 poles to the N.W. corner of the lot thence S 87 3/4° E 81.75 ch to the beginning. Containing 657 7/10 acres. First Division line begins at a Stone in the West line of the section in a prairie 16 1/10 poles from either corner of the section a White Oak 22 S 1/2 S 1/2 E 134 Links - thence S 89 1/2° E 25 links to East line of the section a Jack Oak 3 S 1/2 S 1/2 E 12 links Plum bush 2 S 1/2 N 56 W 5 Links. 162 7/10 poles from either corner of the section. The second line begins at the original gn. corner 165 1/10 poles Eastward from the N.W. corner of the section, a Stone. The original bearing trees in a decaying condition. thence S 17° W 40 ch 42 links to a Stone 163 poles from the center of the West line of the lot. - the 3<sup>rd</sup> line begins at a Bur. O. 8 S 1/2 N 77° E 16 links and Bur. O. 12 S 1/2 S 1/2 E then South 40.25 to Stone in a prairie.

D. Chamberlin S. Sugar ch. com.

D. Hopkins Co. Surveyor &c

No 475  
3263

South ally of old town

126	Stem
1	55
118	
2	55
110	
3	55
102	
100	
4	85
91	
Meeting House	66
75	

Main Street

A dettition to Cherokee Survey for Edmister February 19. 1841.  
 planted a stem on the West side of Main Street, and South side of the South ally of the old town for the beginning of lot N. 1 - See plat. Also see plat for the size of the lots in feet front and rear. Course & area of the old town -

L. Hopkins C.S. & C.O.

No 476  
3466

Survey March 13 1841 for Duncan How the South part of the NW q. of S. 5 T. 3. R. 14 N. R. as follows.  
 Beginning at the S. W. Corner of said q. original corner a White Oak 22 Inches Diameter S 45 W 46 links - and White Oak 12 Inches Diameter N 10 E 23 links - thence N 2 E 21 chain 52 links to a White Oak 18 Inches diameter S 89 E 37 links - thence S 89 E 39.07 chain crossing a run to a cherry S. D. 534 W 22 links - thence N 29 W 19 links - thence S 1 W 21 chain 40 links, crossing a creek to a White O. 22 S. D. Corner tree - thence N 89 W 39 chain crossing a small run to the beginning. Containing 83 <sup>69</sup>/<sub>100</sub> ac.

L. Hopkins C.S. & C.O.

No 477  
3468

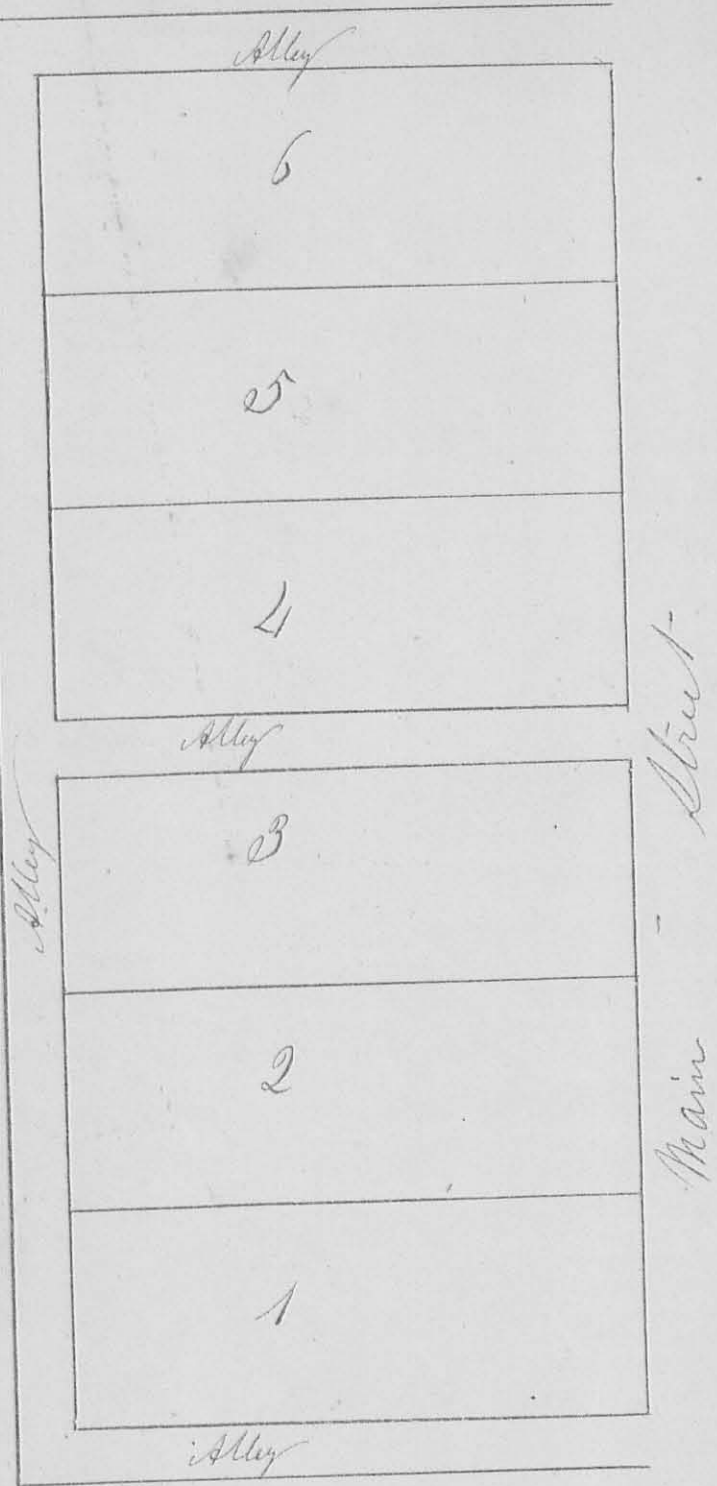
Survey April 8. 1841 for David Hopper and brother the SW q. of S. 5 T. 3. R. 14 N. R. as follows. Beginning at the SW Corner of the section thence N 2 E 40 chain 33 links crossing a run at 22.50 chain to the original q. corner. (See the beginning corner in the preceding survey) thence S 89 E 38.75 links to a White Oak 22 S. D. corner tree, thence S 1 W 40 chain 12 links to a stem, thence N 89 W 39 chain 90 links to the beginning. Then from center of south line at a Bl. Wood nut 22 S. D. N 21 E 71 links, and a Red Oak 24 S. D. N 33 W 57 links, run a line N 13 E 40.20 ch. to a stem center of chain

L. Hopkins C.S. & C.O.

24  
8263

Survey  
No 542

North South



This plot must be reversed in order to be drawn exactly correct  
 being at the South End of the Addition or of at the North End

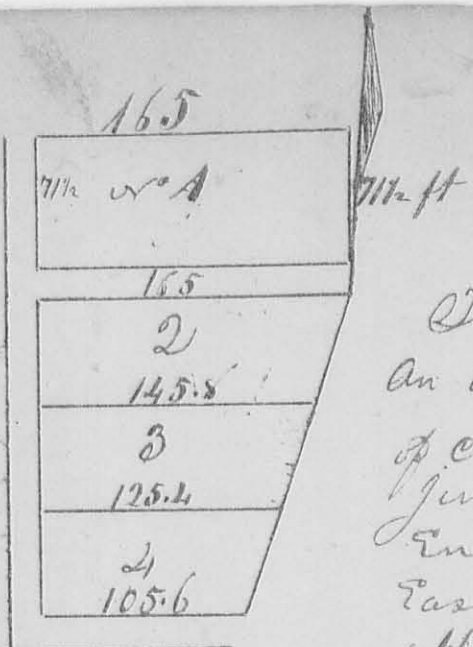
The Above plat represents Harrens Addition to the Cherokee  
 Made August 1st 1845 by Harrens, being part of Survey  
 No 9902, Planted a stone with west side of Main Street  
 & South side of North Alley in said addition. Lots each front  
 55 feet on Main Street & extend 155 ft. back, There is one  
 Alley north of Lot No 1, one north of Lot No 4 & one south of Lot No 6 &  
 one running parallel with Main Street at the East side of said addition each 16  
 ft wide, Course of Main Street same as in Old plat of town, Crossover alleys  
 at right angles  
 A. J. Harrison C. S. G. Co. &



Survey

533

8263



The Annexed diagram represents an addition made to the town of Cherokee by James Collins June 23 1846, The line of west end of lots runs  $N 3^{\circ} 20' W$  East End of Lots No 2, 3 & 4, ~~parallel to~~ bears  $N 17^{\circ} E$  side lines

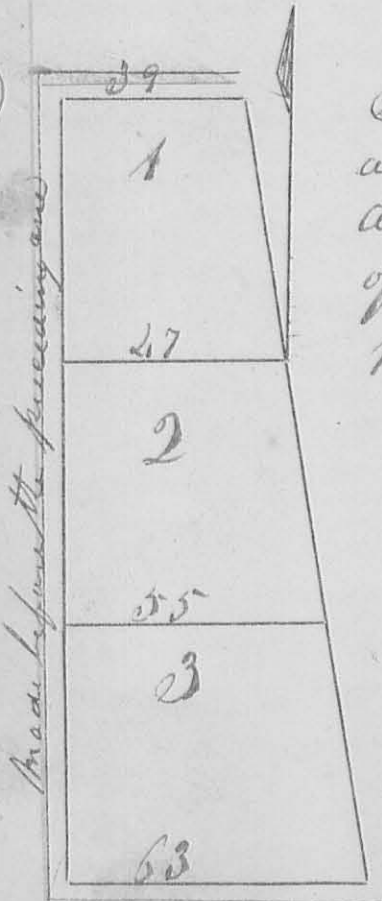
of Lots run at right angles with western boundary of addition, an alley is continued from alley across west end of Underwoods addition. An alley extends along the south side of Lot No 1, & one along the south side of Lot No 2, & one side of Lots in ft see plot

A. Harrison  
CS Geo

8263

Survey No 554

This plot should have been made before the preceding one



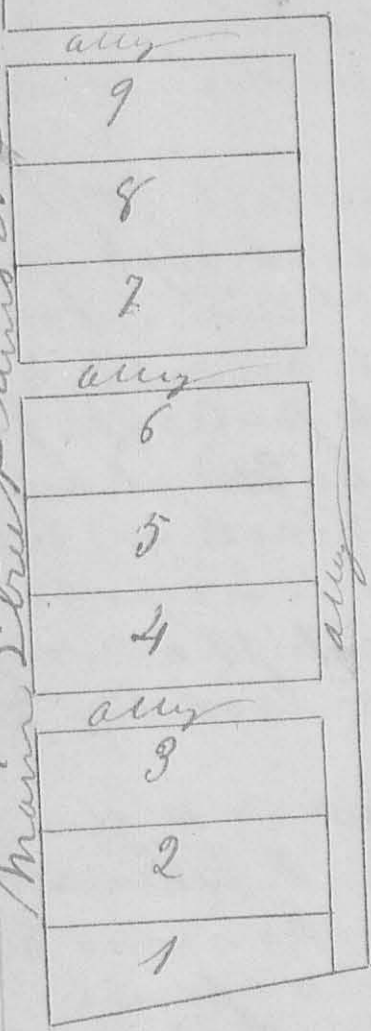
The Annexed diagram represents an addition <sup>June 2 1846</sup> made to <sup>the</sup> Cherokee being additions made to Lots No 1, 2 & 3 of Edmonstons addition, Stone planted at West Corner of Lot No 1. An alley extends along the south side of Lot No 3 & another along the west end of the lots and south alley of old town along the north line of No 1, Courses same as old town, & one side of Lots in plot, alleys each 16 1/2 ft wide, Course of East line of addition  $N 11 1/2 W$

A. Harrison  
CS Geo

8463

Survey  
558

Main Street runs N 36° W



✓

Surveyed September <sup>29</sup> 1826 for  
 William R Hamilton the  
 annexed diagram which  
 represents an addition to  
 the town of Cherokee being  
 part of Survey or 9902, on  
 the East side of Main Street  
 Lots from No 2 to 9 in  
 clusion are each 55 ft  
 front & 165 ft back  
 Irregular lot No 1 is  
 55 ft on front 165 ft  
 back & 33 ft on ally  
 Allys each 16 1/2 ft wide  
 Lots all front on Main  
 Street of Cherokee town  
 Stone planted at SW corner

of Lot No 9

W. Harrison