

Received 8-15-91

OR 8-20-91 C.R.

**LESLIE H. GEESLIN**  
REGISTERED SURVEYOR NO 5248  
P O. BOX 274  
RUSHSVLVANIA, OHIO 43347

TELEPHONE: (513) 468-2793

LILE SURVEY

August 16, 1991

The following described real estate situated in the State of Ohio, County of Logan, Township of McArthur, being part of Virginia Military Survey 9932 and more particularly described as follows:

Beginning at a cap and nail set in the centerline of State Route 638 at the southeast corner of Ronald G. and Linda J. Elliott's 1.02 acre tract as described in D. B. Vol. 332 Page 122.

Thence with said centerline S. 12° 09' 54" E. 412.70 feet to a 5/8 inch iron bar set .

Thence S. 78° 01' 17" W. 298.89 feet to a 4 inch steel post found, passing a 5/8 inch iron bar set at 40.00 feet.

Thence N. 12° 09' 54" W. 423.64 feet to a 5/8 inch iron bar set in the south line of Steven Elliott's 15.071 acre tract as described in O. R. Vol. 27 Page 478, said iron bar being N.80°07'00"E. 2.93 feet from a 5/8 inch iron bar found.

Thence with said Steven Elliott's south line and the south line of said Ronald Elliott's 1.02 acre tract S. 80° 07' 00" E. 299.17 feet to the place of beginning, passing a 3/4 inch iron pipe found at 259.67 feet.

Containing 2.869 acres more or less of which 0.190 acre is in the right-of-way of State Route 638.

The above described 2.869 acre tract being in the northeast corner of Thelma G. Liles' 91.52 acre tract as described in O. R. Vol. 46 Page 474.

Bearings are based on the south line (N. 80° 07' 00" E.) of Ronald G. and Linda J. Elliott's 1.02 acre tract as described in D. B. Vol. 332. Page 122.



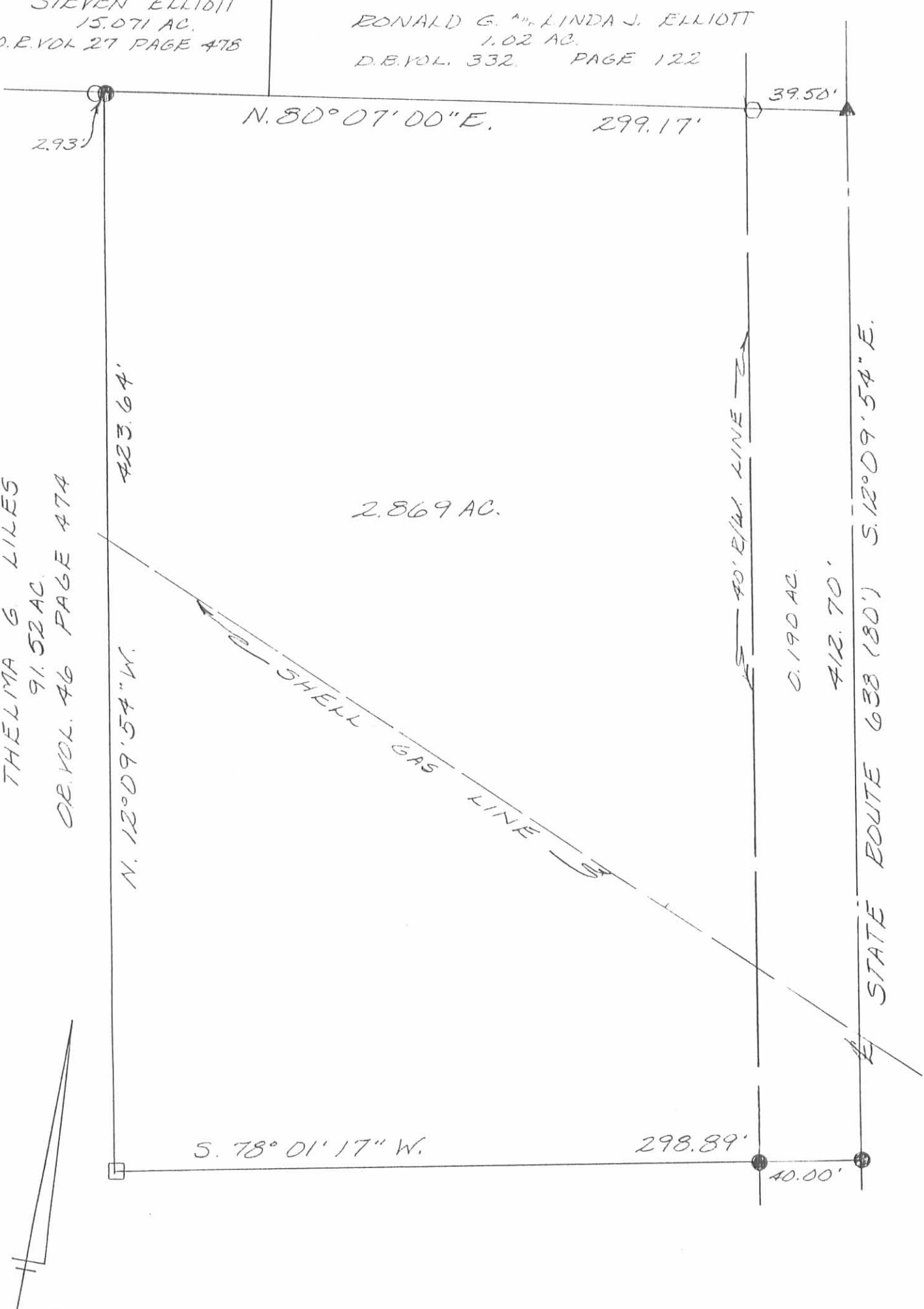
*Leslie H. Geeslin*

INDEXED ON MAP  
8166 1D

STEVEN ELLIOTT  
15.071 AC.  
D.B. VOL. 27 PAGE 478

RONALD G. & LINDA J. ELLIOTT  
1.02 AC.  
D.B. VOL. 332. PAGE 122

THELMA G. LILES  
91.52 AC.  
D.B. VOL. 46 PAGE 474



- LEGEND:
- = 3/4 INCH IRON PIPE FOUND
  - = 4 INCH STEEL POST FOUND
  - = 5/8 INCH IRON BAR FOUND
  - = 5/8 INCH IRON BAR SET
  - ▲ = CAP & NAIL SET

SURVEY OF A 2.869 ACRE TRACT  
IN VIRGINIA MILITARY SURVEY  
9932, 17<sup>th</sup> ARTHUR TOWNSHIP,  
LOGAN COUNTY, OHIO FOR  
WILBUR LILE  
AUGUST 16, 1991

SCALE: 1" = 50'



INDEXED ON MAP  
8166 1P



*Leslie H. Geeslin*  
LESLIE H. GEESLIN  
RUSHSVLVANIA, OH  
(513) 468-2793

REC'D 8-7-03 SML/OK

# Lee Surveying and Mapping Co., Inc.

Land Surveys • Topography • Subdivisions • Construction Layout

117 N. Madriver St.  
Bellefontaine OH 43311



Phone: (937) 593-7335  
Fax: (937) 593-7444

## LILES 3.438 ACRES

Lying in Virginia Military Survey 9932, McArthur Township, Logan County, Ohio.

Being out of the Wilbur E. Liles and Eileen A. Liles original 95.851 acre tract as deeded and described in Official Record 252, Page 652 of the Logan County Records of Deeds and being more particularly described as follows:

Beginning at a PK nail found on Station 95 + 58.40 (Logan County Engineer's Plan L-29, Page 2).

THENCE, with the south lines of the Ronald G. Elliott 1.02 acre tract (Vol. 332, Pg. 122), and the Stephen R. Elliott 15.071 acre tract (O.R. 27, Pg. 478), S 80°-04'-42"W, a distance of 302.07 feet to a 5/8 inch iron rod found at the TRUE POINT OF BEGINNING.

THENCE, with the west line of the Larry Lee Liles 2.869 acre tract (O.R. 138, Pg. 132), S 12°-33'-51"E, a distance of 423.67 feet to a 5/8 inch iron rod set.

THENCE, S 78°-01'-17"W, a distance of 327.19 feet to a 5/8 inch iron rod set.

THENCE, N 17°-41'-18"W, a distance of 439.34 feet to a 5/8 inch iron rod set.

THENCE, with the south line of the said 15.071 acre tract, N 80°-07'-52"E, a distance of 366.82 feet to the point of beginning.

Containing 3.438 acres.

The basis for bearings is the north line of the Larry Lee Liles 2.869 acre tract, being S 80°-04'-42"W, and all other bearings are from angles and distances measured in a field survey by Lee Surveying and Mapping Co., Inc. on August 4, 2003.

Description prepared by:



ORIGINAL STAMP IN GREEN

Jeffrey I. Lee  
Professional Surveyor 6359  
August 5, 2003



L-3638

REC'D 8-7-03 SML

STEPHEN R. ELLIOTT  
15.071 ACRES  
O.R. 27, PG. 478

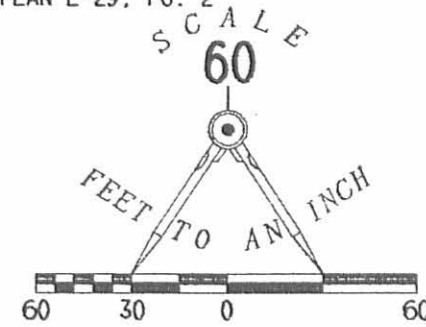
RONALD G. ELLIOTT  
1.02 ACRE TRACT  
VOL. 332, PG. 122

STA. 95 + 58.40  
LO.CO. ENG.'S PLAN L-29, PG. 2

S 80°04'42"W  
302.07'

N 80°07'52"E  
366.82'

STATE ROUTE 638 (180')



- LEGEND
- 5/8 INCH IRON ROD SET
  - 5/8 INCH IRON ROD FOUND
  - ⊗ PK NAIL FOUND

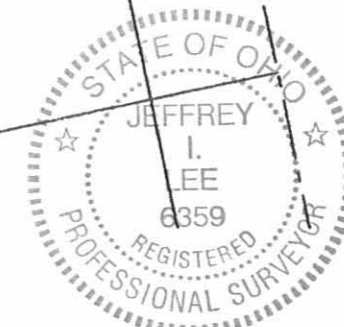
LARRY LEE LILES  
2.869 ACRES  
O.R. 138, PG. 132

3.438 ACRES

S 12°35'51"E  
423.67'

**SURVEY OF 3.438 ACRES  
OUT OF THE  
WILBUR E. LILES AND  
EILEEN A. LILES  
ORIGINAL 95.851 ACRE TRACT  
OFFICIAL RECORD 252, PAGE 652  
VIRGINIA MILITARY SURVEY 9932  
McARTHUR TOWNSHIP  
LOGAN COUNTY, OHIO**

N 17°41'18"W  
439.34'



SURVEYED BY:  
  
JEFFREY I. LEE  
PROFESSIONAL SURVEYOR 6359  
AUGUST 4, 2003

ORIGINAL STAMP IN GREEN

WILBUR E. LILES  
AND EILEEN A. LILES  
ORIGINAL 95.851 ACRES  
O.R. 252, PG. 653

COPYRIGHT 2003 BY:  
**LEE SURVEYING & MAPPING CO., INC.**  
117 North Madriver Street  
BELLEFONTAINE, OHIO 43311  
(937) 593-7335

D 411 LALILES L-3638-3

CALL TOLL FREE **800-362-2764**  
OHIO UTILITIES PROTECTION SERVICE  
**BEFORE YOU DIG**  
2 WORKING DAYS

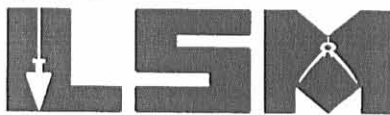
INDEXED ON MAP  
8/16/03 2P

Received 1-16-04 OK gwt

# Lee Surveying and Mapping Co., Inc.

Land Surveys • Topography • Subdivisions • Construction Layout

117 N. Madriver St.  
Bellefontaine OH 43311



Phone: (937) 593-7335  
Fax: (937) 593-7444

## TROYER 4.805 ACRES

Lying in Virginia Military Survey 9932, McArthur Township, Logan County, Ohio

Being out of the Leon H. Troyer and Ruth A. Troyer original 92.413 acre tract as deeded and described in Official Record 688 Page 646 of the Logan County Records of Deeds and being more particularly described as follows:

Beginning at a PK nail found in the center-line of Ohio Route 638 at Station 95+58.40 (Logan County Engineer's Plan L-29, Page 2).

THENCE, with the center-line of Ohio Route 638 (80 feet wide), S 12°-09'-54"E, a distance of 412.81 feet to a 5/8 inch iron rod found at the TRUE POINT OF BEGINNING.

THENCE, with the center-line of Ohio Route 638, S 12°-09'-54"E, a distance of 274.49 feet to a MAG nail set.

THENCE, S 61°-32'-04"W, a distance of 331.19 feet to a 5/8 inch iron rod set, passing a 5/8 inch iron rod set at 41.68 feet.

THENCE, S 78°-17'-25"W, a distance of 274.30 feet to a 5/8 inch iron rod set.

THENCE, N 17°-26'-23"W, a distance of 368.87 feet to a 5/8 inch iron rod found.

THENCE, with the south lines of the Larry Lee Liles and Judy K. Liles 3.438 acre tract (O.R. 687, Pg. 932), and the Larry Lee Liles and Judy Kay Liles 2.869 acre tract (O.R. 138, Pg. 132), N 78°-01'-17"E, a distance of 626.08 feet to the point of beginning, passing a 5/8 inch iron rod found at 586.00 feet.

Containing 4.805 acres, of which 0.260 acre is within the highway right-of-way.

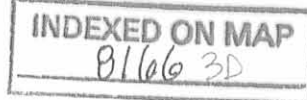
The basis for bearings is the centerline of Ohio Route 638, being S 12°-09'-54"E, and all other bearings are from angles and distances measured in a field survey by Lee Surveying and Mapping Co., Inc. on January 5, 2004.

Description prepared by:



ORIGINAL STAMP IN GREEN

*Jeffrey I. Lee*  
Jeffrey I. Lee  
Professional Surveyor 6359  
January 6, 2004



L-3638

LARRY LEE LILES AND  
JUDY K. LILES  
3.438 ACRES  
O.R. 687, PG. 932

LARRY LEE LILES AND  
JUDY KAY LILES  
2.869 ACRES  
O.R. 138, PG. 132

N 78° 01' 17" E  
626.08'

STA. 95+58.40 (LO. CO. ENG.'S PLAN L-29, PG. 2)

S 12° 09' 54" E  
412.81'

40.08'

638

(BASIS FOR BEARING)  
S 12° 09' 54" E  
274.49'

(80°)

SURVEY OF 4.805 ACRES OUT OF  
THE LEON H. TROYER AND  
RUTH A. TROYER  
ORIGINAL 92.413 ACRE TRACT  
OFFICIAL RECORD 688 PAGE 646  
VIRGINIA MILITARY SURVEY 9932  
McARTHUR TOWNSHIP  
LOGAN COUNTY, OHIO

4.805 ACRES  
OF WHICH 0.260 ACRE IS WITHIN  
THE HIGHWAY RIGHT-OF-WAY

N 17° 26' 23" W  
368.87'

41.68'

331.19'  
S 61° 32' 04" W

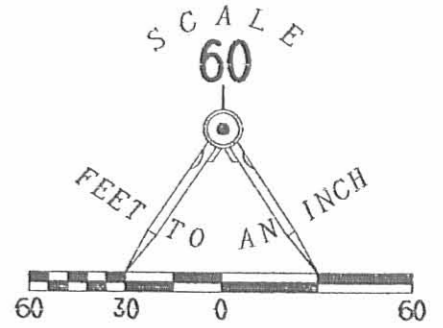
274.30'  
S 78° 17' 25" W

LEON H. TROYER AND  
RUTH A. TROYER  
ORIGINAL 92.413 ACRES  
O.R. 688, PG. 646

- LEGEND:
- 5/8 INCH IRON ROD SET
  - ⊙ MAG NAIL SET
  - 5/8 INCH IRON ROD FOUND
  - ⊗ PK NAIL FOUND



ORIGINAL STAMP IN GREEN



SURVEYED BY:

*Jeffrey I. Lee*  
JEFFREY I. LEE  
PROFESSIONAL SURVEYOR 6359  
JANUARY 05, 2004

COPYRIGHT 2004 BY:  
LEE SURVEYING & MAPPING CO., INC.  
117 North Madriver Street  
BELLEFONTAINE, OHIO 43311  
(937) 593-7335

D411 LALILES2 L-3638-3

2 WORKING DAYS  
**BEFORE YOU DIG**  
CALL TOLL FREE 800-362-2764  
OHIO UTILITIES PROTECTION SERVICE.

INDEXED ON MAP  
8166 3P