

Mast to Wallace Survey Description
October, 1974

Being situated in M^oArthur Township, Logan County, Ohio; and being a part of V.M.S. #9903 - 9928.

Beginning at the northwest corner of a 4.94 acre tract of Robert V. Wallace.

Thence with the west line of said 4.94 acre tract S 21° - 35'W 789.0 feet to a corner post.

Thence with the south line of said 4.94 acre tract N 87° - 28'E 463.5 feet to a iron.

Thence S 5° - 32'E 47.0 feet to a iron.

Thence S 75° - 13'W 800.0 feet to a iron.

Thence N 35° - 00'W 1109.0 feet to a point in the south line of a 78.08 acre tract, passing thru a iron at 996.0 feet.

Thence with the south line of said 78.08 acre tract N 87° - 25'E 1233.5 feet to the place of beginning.

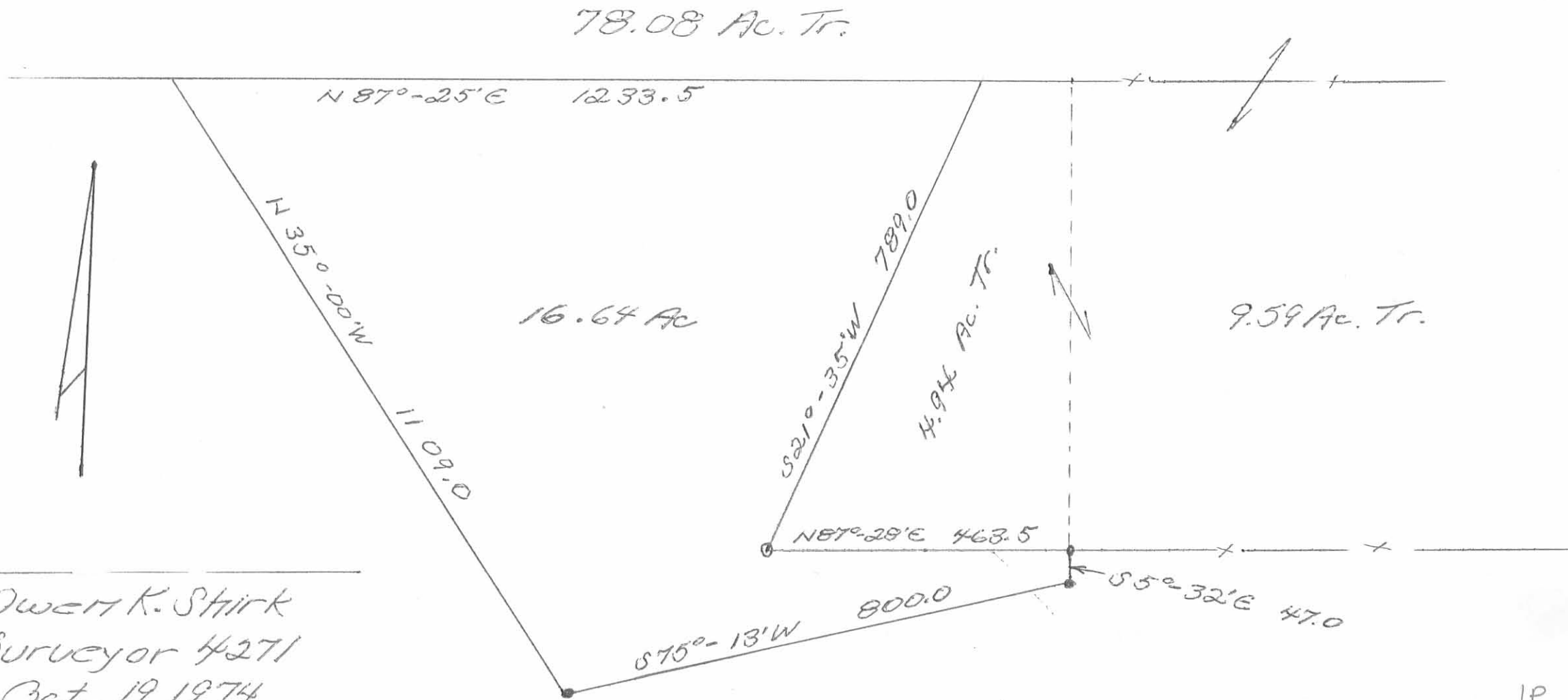
Containing 16.64 acres more or less. Being surveyed from a 73.37 acre tract.

Owen K. Shirk
Surveyor 4271

10
5587

INDEXED ON MAP

MAST to WALLACE SURVEY
 McARTHUR TOWNSHIP, LOGAN COUNTY, OHIO
 V.M.S. 9903-9928 1" = 200'



Owen K. Stirk
 Surveyor 4271
 Oct. 19, 1974

IP
 5587



Lee Surveying and Mapping Co., Inc.

Farm Surveys • Lot Surveys • Topography • Subdivisions • Construction Layout

117 NORTH MADRIVER STREET
BELLEFONTAINE, OHIO 43311

(937) 593-7335
FAX (937) 593-7444

JAMES MAST 68.600 ACRES

Lying in Virginia Military Survey 9903-9928, McArthur Township, Logan County, Ohio.

Being all of the James Mast 58.7 acre tract as deeded and described in Official Record 114, Page 276, Tract III, Parcels 1 and 2.

Beginning at a railroad spike found at the intersection of center-lines of County Highway 37 and Township Road 56.

THENCE, with the center-line of County Highway 37, N 83°-40'-00" E, a distance of 809.55 feet to a railroad spike found at the TRUE POINT OF BEGINNING.

THENCE, with the lines of the Timothy Irwin 10.89 acre tract (O.R. 163, Pg. 786) the following six courses:

N 10°-50'-42" W, a distance of 312.96 feet to a 3/4 inch metal pipe found, passing a 5/8 inch iron rod set at 30.10 feet.

N 18°-15'-46" W, a distance of 285.42 feet to a 1/2 inch metal pipe found.

N 42°-54'-38" W, a distance of 189.78 feet to a 1/2 inch metal pipe found.

S 69°-51'-45" W, a distance of 324.34 feet to a 1/2 inch metal pipe found.

S 33°-10'-50" W, a distance of 326.58 feet to a 3/4 inch metal pipe found.

S 38°-11'-40" W, a distance of 209.12 feet to a point in the middle of Cherokee Mans Run, passing a 5/8 inch iron rod set at 174.12 feet.

THENCE, with the center-line of Cherokee Mans Run and the easterly line of the J. Robert Renick original 169.24 acre tract (O.R. 276, Pg. 342) the following three courses:

N 31°-29'-00" W, 237.92 feet to a point referenced by a 5/8 inch iron rod set

N 58°-31'-00" E, a distance of 11.34 feet.

N 24°-29'-23" W, a distance of 193.91 feet to a point referenced by a 5/8 inch iron rod set N 83°-40'-00" E, a distance of 15.00.

N 45°-03'-26" W, a distance of 299.42 feet to a point referenced by a 5/8 inch iron rod set N 83°-40'-00" E, a distance of 40.00 feet.

THENCE, continuing with the center-line of Cherokee Mans Run, the easterly line of the said 169.24 acre tract and the easterly line of the Floy Fry original 103.62 acre tract (Vol. 237, Pg. 473, Tr. 1), N 15°-09'-06" W, a distance of 650.65 feet to a point referenced by a 5/8 inch iron rod set N 43°-15'-58" E, a distance of 40.00 feet.

THENCE, with the center-line of Cherokee Mans Run and the easterly line of the said 103.62 acre tract the following three courses:

N 3°-51'-38" W, a distance of 190.56 feet to a point referenced by a 5/8 inch iron rod set

S 46°-44'-02" E, a distance of 50.00 feet.

N 52°-03'-31" E, a distance of 65.97 feet to a point referenced by a 5/8 inch iron rod set

S 84°-44'-06" E, a distance of 20.00 feet.

N 10°-43'-57" E, a distance of 633.80 feet to a point.

THENCE, with the south line of the James Wallace 30.30 acre tract (O.R. 230, Pg. 190, Parcel I, Tract I), S 59°-09'-06" E, a distance of 406.00 feet to a point, passing a 3/4 inch metal pipe found at 15.75 feet.

THENCE, with the lines of the James Wallace 16.64 acre tract (O.R. 230, Pg. 190, Parcel Four) the following three courses:

S 37°-56'-12" E, a distance of 1109.00 feet to a 5/8 inch iron rod found, passing a 5/8 inch iron rod found at 113.00 feet.

5507 2D-1
INDEXED ON MAP

N 72°-16'-41" E, a distance of 800.34 feet to a 5/8 inch iron rod found.
N 9°-24'-55" W, a distance of 47.02 feet to a 5/8 inch iron rod found.

THENCE, with the south line of the James Wallace original 10.0 acre tract (O.R. 230, Pg. 190, Parcel one, Tract III), N 84°-36'-37" E, a distance of 525.81 feet to a 4 inch concrete post found.

THENCE, with the westerly line of the Dayton Power and Light Company property (O.R. 329, Pg. 713) with a curve to the left having a central angle of 13°-50'-02", a radius of 5789.64, an arc length of 1397.88 feet, and a chord bearing S 3°-24'-12" E, a distance of 1394.49 feet to a railroad spike found, passing a 5/8 inch iron rod set at 1367.87 feet (arc).

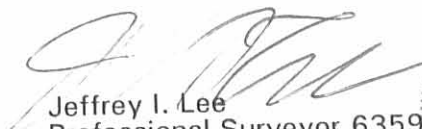
THENCE, with the center-line of County Highway 37 (60 feet wide), S 84°-25'-33" W, a distance of 1055.03 feet to a nail found.

THENCE, continuing with the center-line of County Highway 37, S 83°-40'-00" W, a distance of 21.90 feet to the point of beginning.

Containing 68.600 acres of which 0.742 acre is within the highway right-of-way.

The basis for bearings is the center-line of County Highway 37 at the intersection of Township Road 56 being S 83°-40'-00" W, and all other bearings are from angles and distances measured in a field survey by Lee Surveying and Mapping Co., Inc. on November 26, 1997.

Description prepared by:


Jeffrey I. Lee
Professional Surveyor 6359
December 5, 1997



L 2597

ORIGINAL STAMP IN GREEN

INCORPORATED
5587202

FLOY FRY
 ORIG. 103.62 AC.
 VOL. 237, PG. 473
 TR. NO. 1

PAR ONE. TR. I
 30.30 AC.

CURVE	DELTA ANGLE	RADIUS	ARC	TANGENT	CHORD	CHORD BEARING
C 1	13° 50' 02"	5789.64'	1397.88'	702.35'	1394.49'	S 03° 24' 12" E

JAMES WALLACE
 O.R. 230, PG. 190
 PAR. FOUR
 16.64 AC.

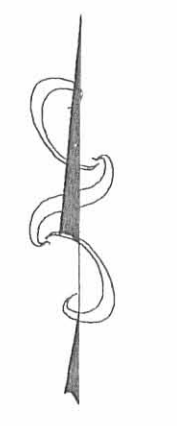
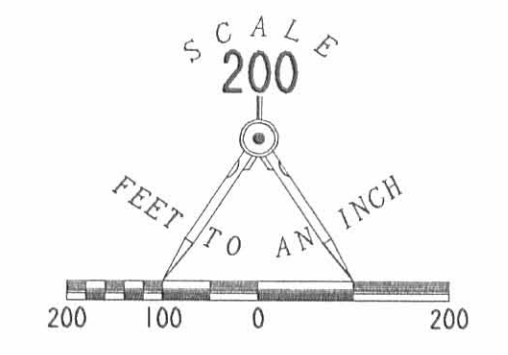
PAR ONE. TR. III
 ORIG. 10.0 AC.

JAMES MAST
 58.7 AC.
 O.R. 114, PG. 276
 TR. III, PAR. 1 & 2

J. ROBERT RENICK
 ORIG. 169.24 AC.
 O.R. 276, PG. 342

TIMOTHY IRWIN
 10.89 AC.
 O.R. 163, PG. 786

68.600 ACRES
 OF WHICH 0.742 ACRE IS
 WITHIN THE HIGHWAY
 RIGHT-OF-WAY.



- LEGEND**
- ⊗ RAILROAD SPIKE FOUND
 - 5/8" I. ROD FOUND
 - 1/2" METAL PIPE FOUND
 - 3/4" METAL PIPE FOUND
 - ⊕ MAG NAIL FOUND
 - NAIL FOUND
 - ⊕ 4" CONCRETE FENCE POST FOUND
 - 5/8" I. ROD SET



RETRACEMENT SURVEY OF 68.600 ACRES
 ALL OF THE JAMES MAST 58.7 ACRE TRACT
 OFFICIAL RECORD 114, PAGE 276
 TRACT III, PARCELS 1 AND 2
 VIRGINIA MILITARY SURVEY 9903-9928
 McARTHUR TOWNSHIP
 LOGAN COUNTY, OHIO

REFERENCES:
 DEEDS AS CITED AND
 VOLUME 132, PAGE 305
 VOLUME 132, PAGE 326
 VOLUME 132, PAGE 349
 VOLUME 46, PAGE 84
 VOLUME 114, PAGE 209

LOGAN COUNTY ENGINEER'S RECORDS:
 RAILROAD PLAN 47
 FIELD BOOK 577, PAGES 27-31
 FIELD BOOK 628, PAGES 39-65
 FIELD BOOK 86, PAGES 86-90
 R-3042, 7542, 6216, 5587, 2559

2 WORKING DAYS
BEFORE YOU DIG
 CALL TOLL FREE **800-362-2764**
 OHIO UTILITIES PROTECTION SERVICE.

SURVEYED BY:

 JEFFREY I. LEE
 PROFESSIONAL SURVEYOR 6359
 NOVEMBER 26, 1997



COPYRIGHT 1997 BY:
LEE SURVEYING & MAPPING CO., INC.
 117 North Madriver Street
 BELLEFONTAINE, OHIO 43311
 (937) 593-7335

INDEXED ON MAP
 5587 2P