

REC'D 5-15-06 SMY OK

Lee Surveying and Mapping Co., Inc.

Land Surveys • Topography • Subdivisions • Construction Layout

117 N. Madriver St.
Bellefontaine OH 43311



Phone: (937) 593-7335
Fax: (937) 593-7444

1975 - 2005 - 30 YEARS OF EXCELLENCE

V. E. BEARD OIL COMPANY 4.575 ACRES

Lying in Virginia Military Survey 9929, McArthur Township, Logan County, Ohio.

Being all of the V. E. Beard Oil Company 1.38 acre tract and 3.201 acre tract as deeded and described in Official Record 760, Page 732 Tracts I and II and being more particularly described as follows:

Commencing at a MAG nail set the intersection of center-lines of Ohio Route 274 (60 feet wide) and Ohio Route 117 (60 feet wide).

THENCE, with the center-line of Ohio Route 117, N 7°-32'-00"W, a distance of 253.55 feet to a point, at THE TRUE POINT OF BEGINNING.

THENCE, with the center-line of Ohio Route 117, N 7°-32'-00"W, a distance of 200.00 feet to a point.

THENCE, with the south line of the Thomas G. Horn and Florence L. Horn 8.00 acre tract (Vol. 399, Pg. 532) and the south line of the Roland M. Swonguer 59.280 acre tract (O.R. 53, Pg. 592), N 83°-09'-24"E, a distance of 996.28 feet to a 5/8 inch iron rod found, passing a 5/8 inch iron rod set at 30.00 feet.

THENCE, with the west line of the Roger J. Schulze and Treva A. Schulze, Trustee 96.17 acre tract (O.R. 756, Pg. 646 Tract IV), S 7°-41'-39"E, a distance of 200.01 feet to a 5/8 inch iron rod found.

THENCE, with the north line of the Robert F. Ammons 4.01 acre tract (O.R. 9, Pg. 773) and the north line of the Robert F. Ammons 0.500 acre tract (Vol. 374, Pg. 721), S 83°-09'-24"W, a distance of 996.84 feet to the point of beginning, passing a 5/8 inch iron rod set at 966.84 feet.

Containing 4.575 acres of which 0.138 acre is within the highway right-of-way.

The basis for bearings is the center-line of Ohio Route 117 being N 7°-32'-00"W, and all other bearings are from angles and distances measured in a field survey by Lee Surveying and Mapping Co., Inc. on May 9, 2006.



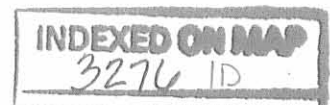
ORIGINAL STAMP IN GREEN

Description prepared by:

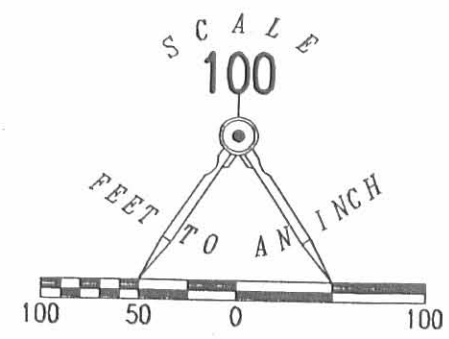
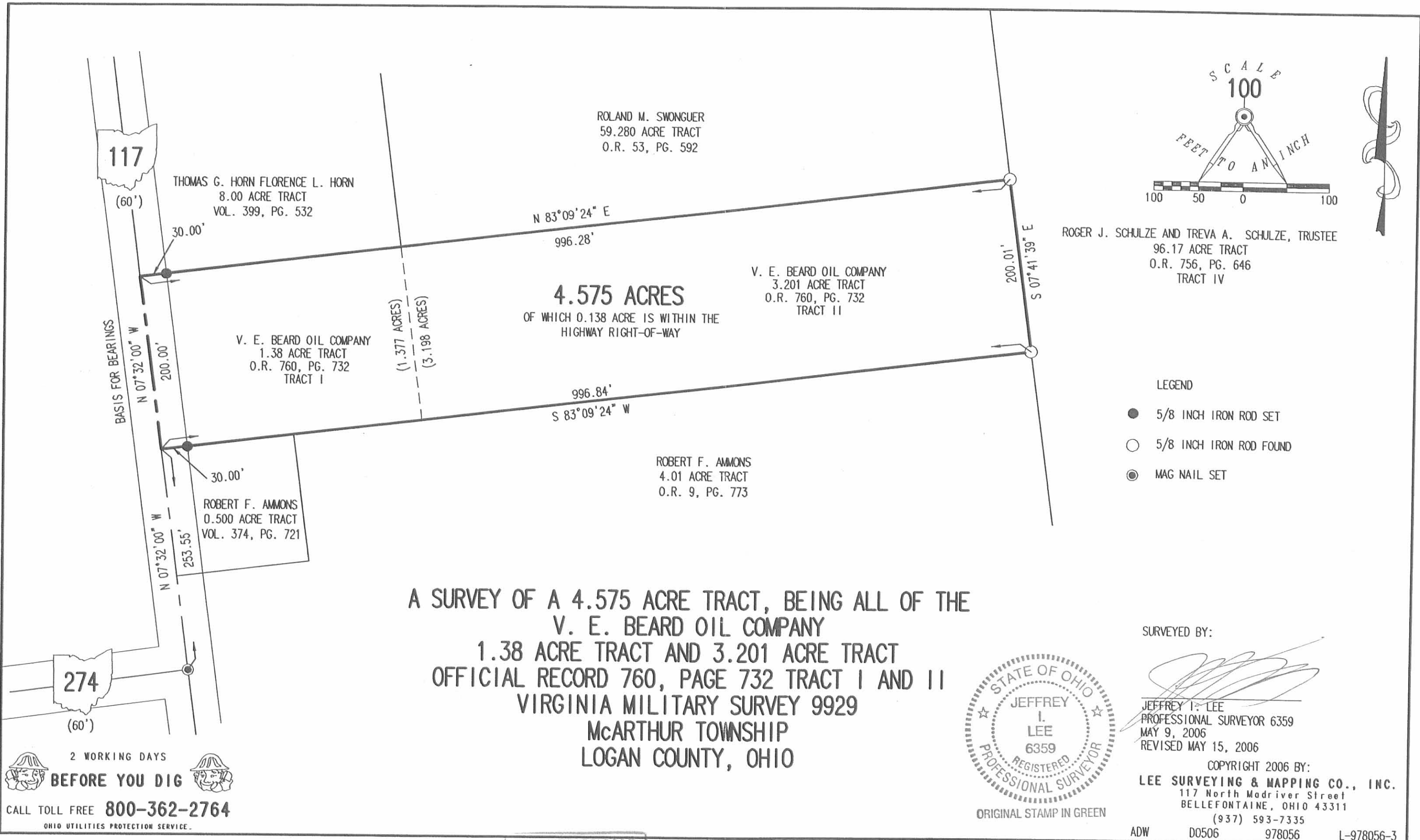
[Handwritten Signature]
Jeffrey I. Lee
Professional Surveyor 6359
May 9, 2006

Revised May 15, 2006

L-978056



REV'D 5-15-06 SMY/OK

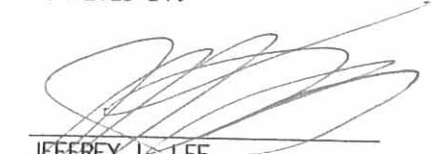


ROGER J. SCHULZE AND TREVA A. SCHULZE, TRUSTEE
 96.17 ACRE TRACT
 O.R. 756, PG. 646
 TRACT IV

- LEGEND
- 5/8 INCH IRON ROD SET
 - 5/8 INCH IRON ROD FOUND
 - ⊙ MAG NAIL SET

A SURVEY OF A 4.575 ACRE TRACT, BEING ALL OF THE
 V. E. BEARD OIL COMPANY
 1.38 ACRE TRACT AND 3.201 ACRE TRACT
 OFFICIAL RECORD 760, PAGE 732 TRACT I AND II
 VIRGINIA MILITARY SURVEY 9929
 McARTHUR TOWNSHIP
 LOGAN COUNTY, OHIO



SURVEYED BY:

 JEFFREY I. LEE
 PROFESSIONAL SURVEYOR 6359
 MAY 9, 2006
 REVISED MAY 15, 2006

COPYRIGHT 2006 BY:
 LEE SURVEYING & MAPPING CO., INC.
 117 North Madriver Street
 BELLEFONTAINE, OHIO 43311
 (937) 593-7335

2 WORKING DAYS
BEFORE YOU DIG
 CALL TOLL FREE **800-362-2764**
 OHIO UTILITIES PROTECTION SERVICE.

INDEXED ON MAP
 3276 IP

ADW D0506 978056 L-978056-3

REC'D 3-18-96 SWJ OK ✓



Lee Surveying and Mapping Co., Inc.

Farm Surveys • Lot Surveys • Topography • Subdivisions • Construction Layout

143 EAST COLUMBUS AVENUE
BELLEFONTAINE, OHIO 43311

(513) 593-7335
FAX (513) 593-7444

ROLAND M. SWONGUER 3.201 ACRES

Lying in Virginia Military Survey 9929, McArthur Township, Logan County, Ohio.

Being out of the Roland M Swonguer and Leslie A. Swonguer 59.28 acre tract as deeded and described in Official Record 53, Page 592 of the Logan County Records of Deeds and being more particularly described as follows:

Beginning at a 5/8 inch iron rod set at the southeast corner of the Vernon E. Beard 1.38 acre tract (Vol. 386, Pg. 755).

THENCE, with the east line of the said 1.38 acre tract, N 7°-32'-00" W, a distance of 200.00 feet to a 5/8 inch iron rod set at the northeast corner of the 1.38 acre tract.

THENCE, N 83°-16'-15" E, a distance of 697.15 feet to a 5/8 inch iron rod set.

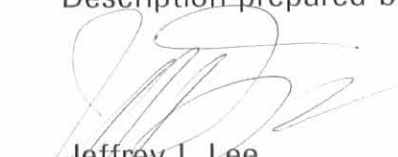
THENCE, with the west line of the Roger J. Schulze 96.17 acre tract (O.R. 200, Pg. 817), S 7°-33'-30" E, a distance of 200.00 feet to a 5/8 inch iron rod set.

THENCE, with the north line of the Robert F. Ammons 4.01 acre tract (O.R. 9, Pg. 773), S 83°-16'-15" W, a distance of 697.23 feet to the point of beginning.

Containing 3.201 acres.

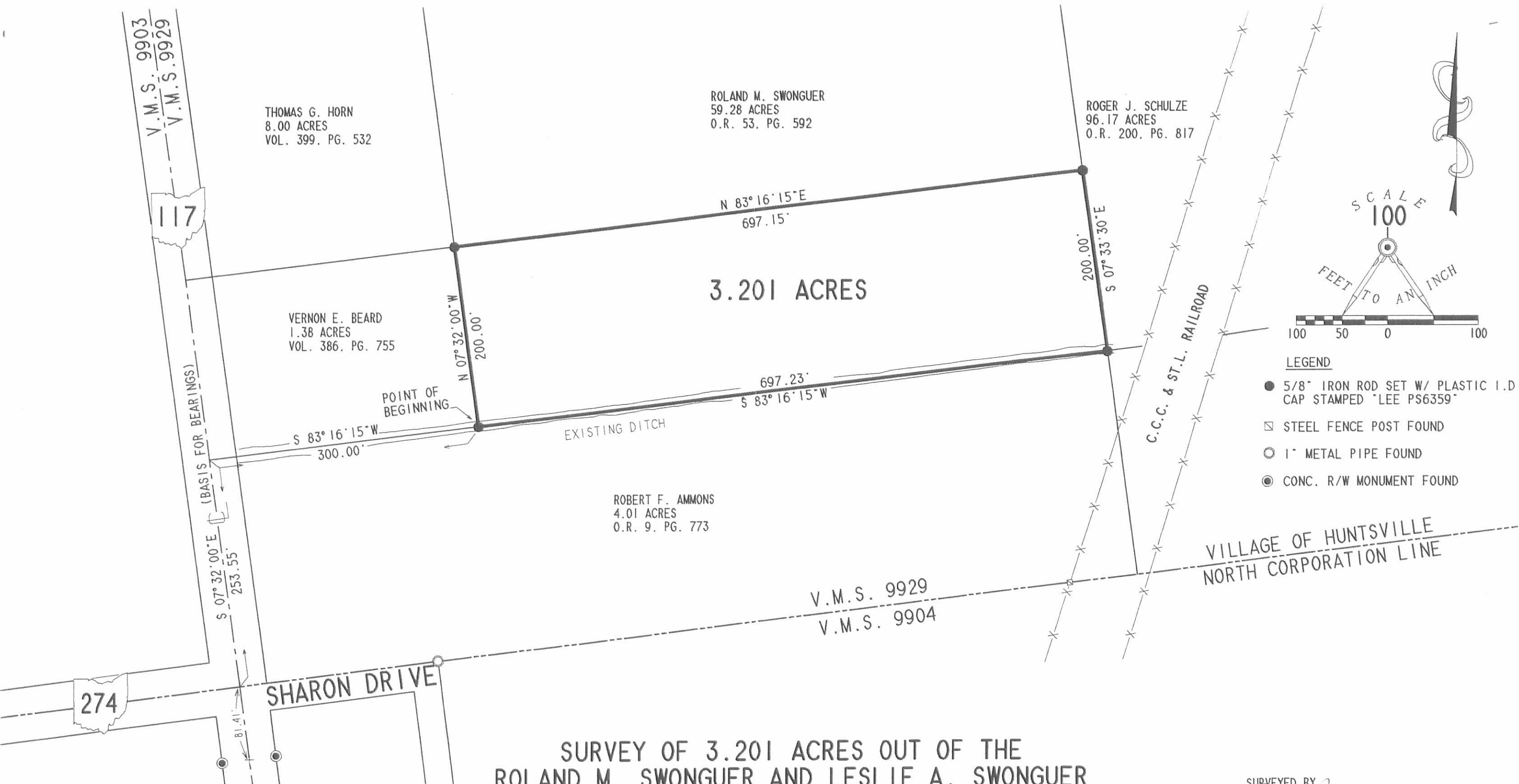
The basis for bearings is the center-line of Ohio Route 117 being S 7°-32'-00" E, and all other bearings are from angles and distances measured in a field survey by Lee Surveying and Mapping Co., Inc. on March 15, 1996

Description prepared by:


Jeffrey I. Lee
Professional Surveyor 6359
March 18, 1996



INDEXED ON MAP
3276 2D



**SURVEY OF 3.201 ACRES OUT OF THE
ROLAND M. SWONGUER AND LESLIE A. SWONGUER
59.28 ACRE TRACT
OFFICIAL RECORD BOOK 53, PAGE 592
VIRGINIA MILITARY SURVEY 9929
McARTHUR TOWNSHIP
LOGAN COUNTY, OHIO**

REFERENCES
LOGAN COUNTY ENGINEER'S MAP ROOM, DRAWER R,
FILE NUMBERS 4064, 6808, 5335 & 5538.

STATE OF OHIO
JEFFREY I. LEE
REGISTERED
PROFESSIONAL SURVEYOR
6359

SURVEYED BY
Jeffrey I. Lee
JEFFREY I. LEE
PROFESSIONAL SURVEYOR 6359
MARCH 11, 1996

COPYRIGHT 1996 BY:
LEE SURVEYING & MAPPING CO., INC.
143 East Columbus Avenue
BELLEFONTAINE, OHIO 43311
(513) 593-7335

ORIGINAL STAMP IN GREEN
D278 BEARD01L L 978-3

2 WORKING DAYS
BEFORE YOU DIG
CALL TOLL FREE **800-362-2764**
OHIO UTILITIES PROTECTION SERVICE.

3276 2P

Cooke Survey McArthur Township August 1962 69.66 Acres

The following described land in McArthur Township, Logan County Ohio and being in V.M.S. 9929

Beginning at an iron in the center of State Route Number 117 (Old U.S.Route Number 33) at the center of State Route Number 274 known as the Jackson Center Pike and also being the S.W. corner of V.M.S. 9929. Thence with the center of State Route Number 117 N. 7 - 32 W. 253.65 feet for the true beginning point of this survey. Said beginning point being the N.W. corner of Robert C. Ammons 5.76 acre tract.

Thence with the center of State Route Number 117 the following three courses and distances :

N. 7 - 32 W. 1435.40 feet.

N. 6 - 00 W. 494.60 feet.

N. 7 - 24 W. 1130.00 feet to an iron.

Thence with the south line of Richard H. Schlumbohm 318.95 acre tract N. 83 - 14 E. 980.00 to a large round wood post at an interior corner of said Schlumbohm land.

Thence with a west line of said Schlumbohm 318.95 acre tract and also with the west line of Grant L. McCormick 105.42 acre tract S. 7.- 32 E. 3073.00 feet to the N.E. corner of Robert C. Ammons 5.76 acre tract. The last described line passing the S.W. corner of the Schlumbohm tract and the N.W. corner of the McCormick tract at 1934.00 feet.

Thence with the north line of said Ammons 5.76 acre tract S. 83 - 53 W. 996.00 feet to the place of beginning. The last described line being 5.00 feet north of and parallel with the present fence line.

The above described tract contains 69.66 acres. and being the same tract as now shown on the Logan County Auditor's Duplicate as 69.24 acres.

cc
Logan County Engineer

INDEXED ON MAP

3276 3D



On Plat Book
D.E.G.



Lee Surveying and Mapping Co., Inc.

APPROVED

Land Surveys • Topography • Subdivisions • Construction Layout

117 N. Madriver St.
Bellefontaine OH 43311



Phone: (937) 593-7335
Fax: (937) 593-7444
surveys@lsminc.us

SWONGUER 4.000 ACRES

Lying in Virginia Military Survey 9929, McArthur Township, Logan County, Ohio.

Being out of the Roland M. Swonguer and Leslie A. Swonguer 59.28 acre tract as deeded and described in Official Record 53, Page 592 of the Logan County Records of Deeds and being more particularly described as follows:

Commencing on a MAG nail found on the northeast corner of Virginia Military Survey 9903-9928 on the center-line of Ohio Route 117.

THENCE, with the east line of Virginia Military Survey 9903-9928 and the center-line of Ohio Route 117 (variable widths), S 07°-36'-50"E, a distance of 835.59 feet to a MAG nail set at the TRUE POINT OF BEGINNING.

THENCE, N 82°-55'-44"E, a distance of 310.00 feet to a 5/8 inch iron rod set, passing a 5/8 inch iron rod set at 40.00 feet.

THENCE, S 03°-52'-35"E, a distance of 600.91 feet to a 5/8 inch iron rod set.

THENCE, S 82°-55'-44"W, a distance of 270.83 feet to a MAG nail set on the east line of Virginia Military Survey 9903-9928 and the center-line of Ohio Route 117, passing a 5/8 inch iron rod set at 230.83 feet.

THENCE, with the east line of Virginia Military Survey 9903-9928 and the center-line of Ohio Route 117 (70 feet wide, 30 feet west and 40 feet east), N 07°-36'-50"W, a distance of 600.00 feet to the point of beginning.

Containing 4.000 acres, of which 0.551 acre is within the highway right-of-way.

Property is subject to any and all previous easements and rights-of-way of record.

The basis for bearings is the east line of Virginia Military Survey 9903-9928 and the center-line of Ohio Route 117, being S 07°-36'-50"E, and all other bearings are from angles and distances measured in a field survey by Lee Surveying and Mapping Co., Inc. on December 20, 2013.



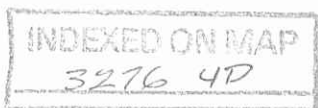
ORIGINAL STAMP IN GREEN

Description prepared by:

William K. Bruce

William K. Bruce
Professional Surveyor 7437
December 23, 2013

56561113



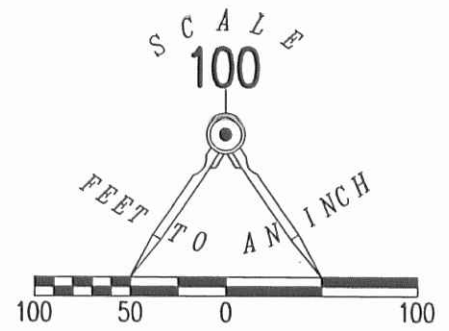
APPROVED

V.M.S. 12320
V.M.S. 9903-9928

(BASIS FOR BEARINGS)
S 07°36'50" E

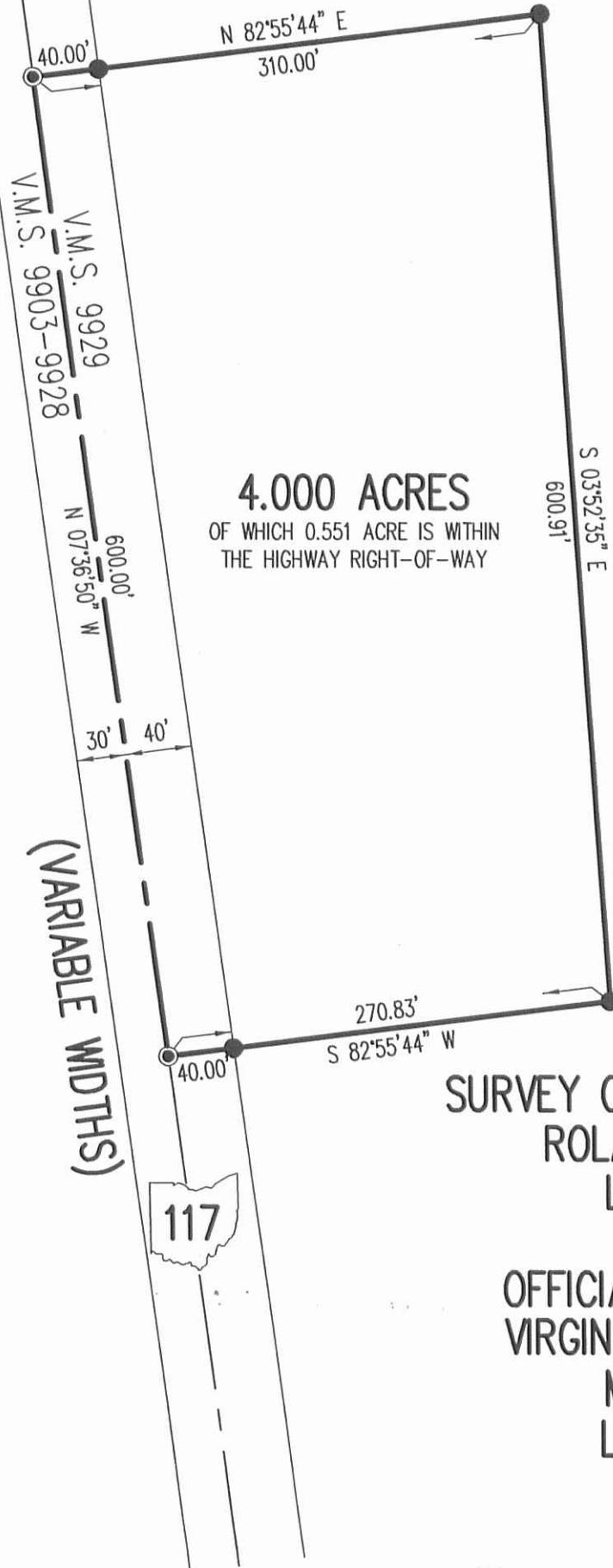
835.59'
30' 30'

ROLAND M. SWONGUER AND
LESLIE A. SWONGUER
72.285 ACRES
O.R. 661, PG. 137



LEGEND:

- MAG NAIL SET
- MAG NAIL FOUND
- 5/8 INCH IRON ROD FOUND
- 5/8 INCH IRON ROD SET WITH PLASTIC I.D. CAP STAMPED "LSM 7437"



4.000 ACRES
OF WHICH 0.551 ACRE IS WITHIN
THE HIGHWAY RIGHT-OF-WAY

ROLAND M. SWONGUER AND
LESLIE A. SWONGUER
59.28 ACRES
O.R. 53, PG. 592

**SURVEY OF 4.000 ACRES OUT OF THE
ROLAND M. SWONGUER AND
LESLIE A. SWONGUER
59.28 ACRE TRACT
OFFICIAL RECORD 53, PAGE 592
VIRGINIA MILITARY SURVEY 9929
McARTHUR TOWNSHIP
LOGAN COUNTY, OHIO**

SURVEYED BY:

William K. Bruce

WILLIAM K. BRUCE
PROFESSIONAL SURVEYOR 7437
DECEMBER 20, 2013

COPYRIGHT 2013 BY:

LEE SURVEYING & MAPPING CO., INC.
117 North Madriver Street
BELLEFONTAINE, OHIO 43311
(937) 593-7335
WWW.LSMINC.US
surveys@lsminc.us



ORIGINAL STAMP IN GREEN

2 WORKING DAYS



CALL TOLL FREE **800-362-2764**

OHIO UTILITIES PROTECTION SERVICE

INDEXED ON MAP
3276 4P