

MAXWELL TO STOKES & MAXWELL DESCRIPTION  
(August, 1962)

Being situated in McArthur Township, Logan County, Ohio;  
and being a part of V. M. S. #9929.

Beginning at the northwest corner of V. M. S. #9929 which  
is the intersection of State Route #117 and County Highway #100.

Thence with the center of County Highway #100 N81°-40'E  
250.0 feet.

Thence S 7°-30'E 120.0 feet to an iron, passing through  
an iron at 16.5 feet.

Thence S81°-40'W 250.0<sup>feet</sup> to the center of State Route #117,  
passing through an iron at 222.5 feet.

Thence with the center of State Route #117 N 7°-30'W 120.0  
feet to the place of beginning.

Containing 0.69 of an acre more or less.

Owen K. Shirk  
Surveyor #4271

INDEXED ON MAP

3274 ID

W. P. ... Bank  
D. L. ...

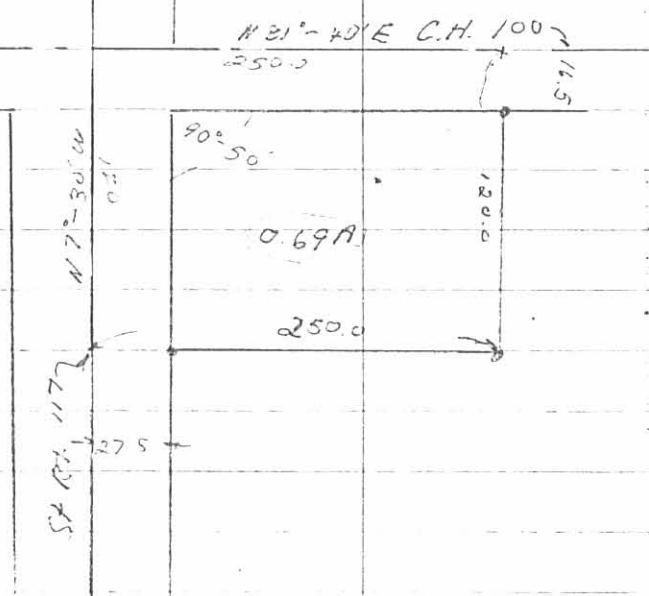
LOGAN COUNTY

MCARTHUR TWP.

V.M.S. 9929

26

81-10  
81-40



3274 1P

INDEXED ON MAP

OKS BK 7 PG 36