

R&B SURVEYING
4293 Rd. 171
West Liberty, OH. 43357

(513) 465-7412

FRY SURVEY

The following described real estate situated in the State of Ohio, County of Logan, Township of McArthur and being part of the Virginia Military Survey No. 9903, 9928 and being part of that 103.26 acre tract in the name of Floy Fry as described in D.B. Volume 237, Page 473 of the Logan County Deed Records and being more particulary described as follows:

Commencing at a bolt in the center of Township Road No. 221 at the northwest corner of Floy Fry's 2.03 acre tract as described as Tract No. 2 in D.B. Volume 237, Page 473 of the Logan County Deed Records, said bolt also being Station 8+64.71 as referenced in the T.R. 221 survey by the Logan County Engineer.

Thence with the center of T.R. 221, N.57°30'52"E. 176.12 feet to a 1 inch pipe found.

Thence continuing with the center of T.R. 221, N.70°38'58"E. 34.95 feet to a P.K. nail set. Said nail being in the center of Bridge No. 221-0.20 and Cherokee-Mans Run, Said nail also being the beginning point of this description.

Thence continuing with the center of T.R. 221, N.70°38'58"E. 197.50 feet to a 5/8 inch iron found.

Thence continuing with the center of T.R. 221, S.69°06'12"E. 541.99 feet to a 1½ inch pipe found, passing a bolt found at 27.20 feet.

INDEXED ON MAP
307/1b-1

Thence continuing with the center of T.R. 221, N.83°04'32"E. 171.36 feet to a point in the center of an open ditch, passing a P.K. nail set for reference at 94.67 feet.

Thence with the center of said open ditch, S.60°02'46"W. 178.58 feet to a point from which a 5/8 inch iron set for reference bears N.28°59'09"W. 30.01 feet.

Thence continuing with the center of said open ditch, S.61°59'39"W 327.54 feet to a point in the center of Cherokee-Mans Run from which a 5/8 inch iron set for reference bears N.5°53'06"W. 32.39 feet.

Thence with the center of Cherokee-Mans Run, N.73°45'48"W. 163.09 feet to a point from which a 5/8 inch iron set for reference bears N.27°59'12"E. 30.64 feet

Thence continuing with the center of Cherokee-Mans Run, N.50°15'32"W. 185.32 feet to a point from which a 5/8 inch iron set for reference bears N.48°17'17"E. 30.34 feet.

Thence continuing with the center of Cherokee-Mans Run, N.32°46'17"W. 221.32 feet to the place of beginning.

Containing 3.907 acres, more or less.

Basis of Bearing: Magnetic North

This description prepared from an actual field survey.

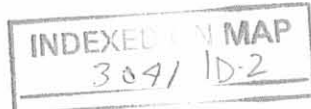
Prepared by:

Richard A. Bruce

Richard A. Bruce

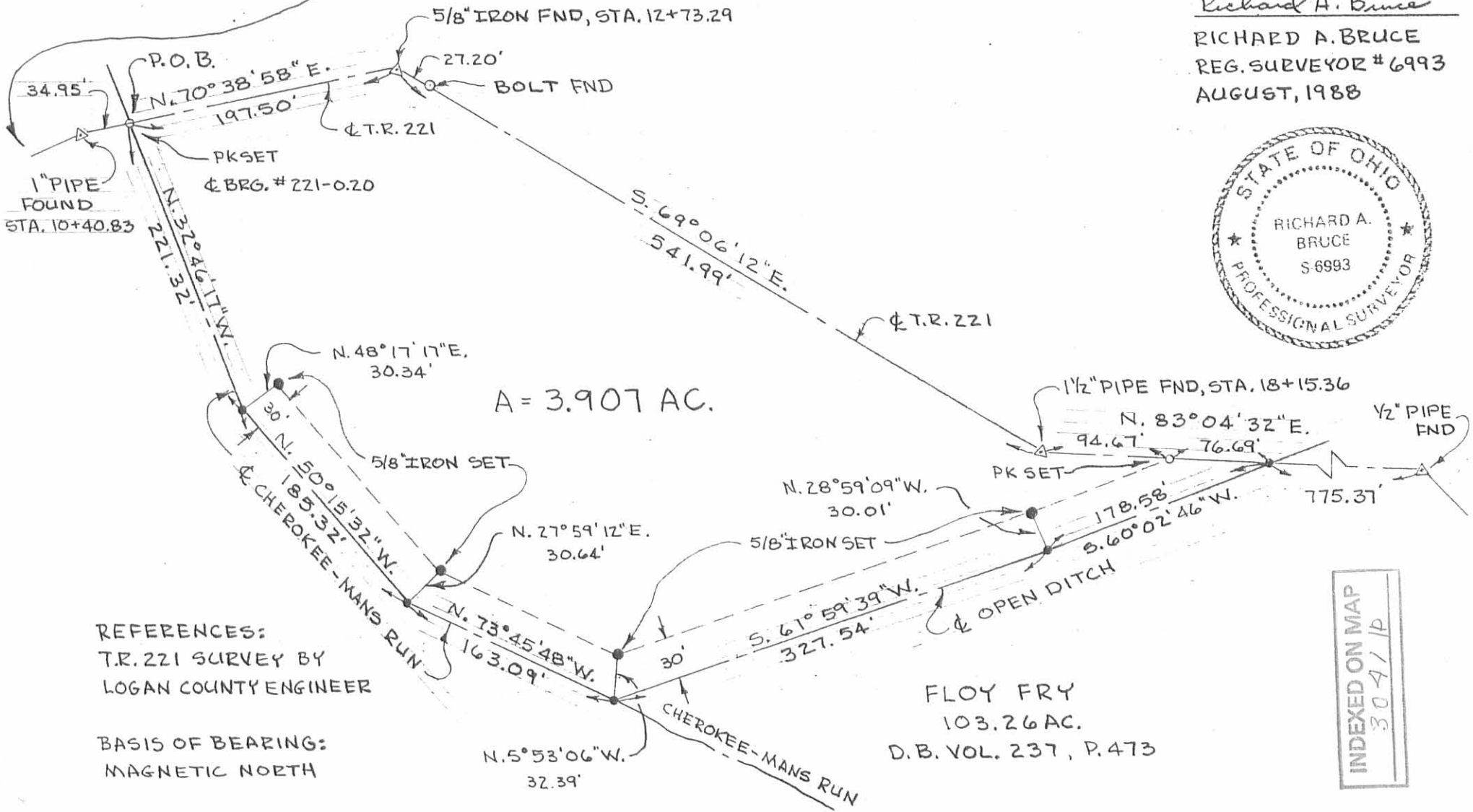
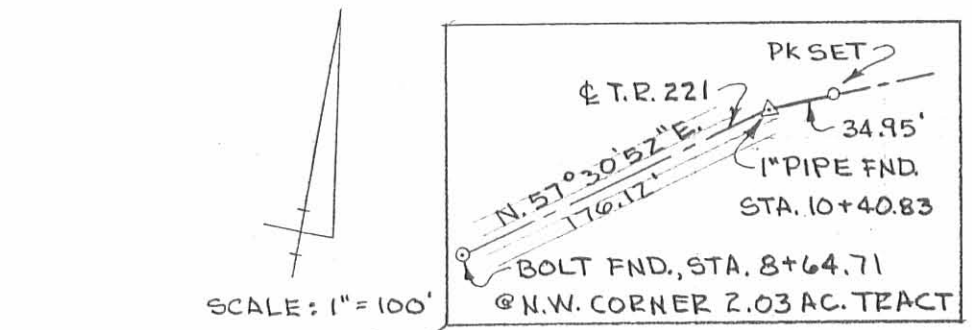
Reg. Surveyor No. 6993

August 15, 1988



SURVEY OF 3.907 AC. OUT OF
 FLOY FRY'S 103.26 AC. TRACT
 VMS 9903 & 9928
 MCARTHUR TWP., LOGAN COUNTY, OHIO

SURVEY BY:
Richard A. Bruce
 RICHARD A. BRUCE
 REG. SURVEYOR #6993
 AUGUST, 1988



REFERENCES:
 T.R. 221 SURVEY BY
 LOGAN COUNTY ENGINEER

BASIS OF BEARING:
 MAGNETIC NORTH

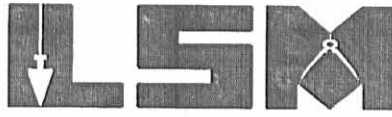
FLOY FRY
 103.26 AC.
 D.B. VOL. 237, P. 473

INDEXED ON MAP
 3041/P

SCALE: 1" = 100'

Lee Surveying and Mapping Co., Inc.

Land Surveys • Topography • Subdivisions • Construction Layout

117 N. Madriver St.
Bellefontaine OH 43311Phone: (937) 593-7335
Fax: (937) 593-7444

SHARP 96.722 ACRES

Lying in Virginia Military Survey 9903-9928, McArthur Township, Logan County, Ohio.

Being all of the remainder of the Floy Sharp, Trustee, original 103.62 acre and 2.04 acre tracts as deeded and described in Official Record 452, Page 385, Tract No. 1 and Tract No. 2, of the Logan County Records of Deeds and being more particularly described as follows:

Beginning at a MAG nail set on the west line of Virginia Military Survey 9903-9928 at the intersection of the center-lines of Township Road 99 (60 feet wide) and Township Road 221 (60 feet wide).

THENCE, with the center-line of Township Road 221, the following four (4) courses:

N 83°-11'-48" E, a distance of 350.24 feet to a 1/2 inch iron pipe found;

S 53°-45'-52" E, a distance of 315.06 feet to a 1/2 inch iron pipe found;

N 81°-30'-12" E, a distance of 71.06 feet to a 1/2 inch iron pipe found;

N 48°-18'-54" E, a distance of 128.23 feet to a 3/4 inch square iron bolt found at the TRUE POINT OF BEGINNING.

THENCE, with the center-line of Township Road 221, the following two (2) courses:

N 50°-23'-25" E, a distance of 176.12 feet to a 1 inch iron pipe found;

N 63°-31'-31" E, a distance of 34.95 feet to a P.K. nail found.

THENCE, with the center-line of Cherokee-Mans Run and the lines of the Jon P. Harpst 3.907 acre tract (O.R. 443, Pg. 648), the following five (5) courses:

S 39°-53'-44" E, a distance of 221.32 feet to a point referenced by a 5/8 inch iron rod found
N 41°-09'-50" E, a distance of 30.34 feet, passing a 5/8 inch iron rod set at 30.84 feet;

S 57°-22'-59" E, a distance of 185.32 feet to a point referenced by a 5/8 inch iron rod found
N 20°-51'-45" E, a distance of 30.64 feet.

S 80°-53'-15" E, a distance of 163.09 feet to a point referenced by a 5/8 inch iron rod found
N 13°-00'-33" W, a distance of 32.39 feet.

N 54°-52'-12" E, a distance of 327.54 feet to a point referenced by a 5/8 inch iron rod found
N 36°-06'-36" W, a distance of 30.01 feet.

N 52°-58'-51" E, a distance of 178.63 feet to a point referenced by a P.K. nail found
S 75°-57'-27" W, a distance of 76.69 feet.

THENCE, with the center-line of Township Road 221, the following three (3) courses:

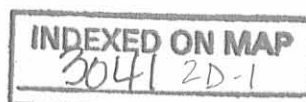
N 75°-57'-27" E, a distance of 775.35 feet to a 1/2 inch iron pipe found;

S 59°-58'-54" E, a distance of 214.27 feet to a harrow tooth found;

S 48°-27'-40" E, a distance of 554.78 feet to a stone found.

THENCE, with a west line of the James Wallace 30.30 acre tract (O.R. 230, Pg. 190, Parcel One, Tract I), S 39°-59'-12" W, a distance of 151.25 feet to a point, passing 5/8 inch iron rods set at 30.01 feet and at 136.25 feet.

THENCE, with the center-line of Cherokee-Mans Run and the west lines of the said 30.30 acre tract, the following two (2) courses:



Lee Surveying and Mapping Co., Inc.

Land Surveys • Topography • Subdivisions • Construction Layout

117 N. Madriver St.
Bellefontaine OH 43311



Phone: (937) 593-7335
Fax: (937) 593-7444

S 8°-46'-34" E, a distance of 696.20 feet to a point referenced by a 5/8 inch iron rod set
S 81°-13'-26" W, a distance of 22.00 feet.

S 47°-48'-00" E, a distance of 208.50 feet to a point referenced by a 3/4 inch iron pipe found
S 59°-09'-06" E, a distance of 15.76 feet.

THENCE, with the center-line of Cherokee-Mans Run and the west lines of the Carolyn S. Hurley, Trustee, 68.600 acre tract (O.R. 432, Pg. 632, Tract I), the following four (4) courses:

S 10°-43'-57" W, a distance of 633.80 feet to a point referenced by a 5/8 inch iron rod found
S 84°-44'-06" E, a distance of 20.00 feet;

S 52°-03'-31" W, a distance of 65.97 feet to a point referenced by a 5/8 inch iron rod found
S 46°-44'-02" E, a distance of 50.00 feet;

S 3°-51'-38" E, a distance of 190.56 feet to a point referenced by a 5/8 inch iron rod found
N 43°-15'-58" E, a distance of 40.00 feet.

S 15°-09'-06" E, a distance of 154.06 feet to a point.

THENCE, with the lines of the J. Robert Renick, Trustee, 167.326 acre tract (O.R. 588, Pg. 805, Parcel Twelve, Tract I), the following three (3) courses:

S 84°-45'-43" W, a distance of 1659.30 feet to a 2 inch iron pipe found at the southeast corner of a concrete post;

N 9°-31'-14" W, a distance of 2088.69 feet to a 5/8 inch iron rod set;

N 65°-52'-34" W, a distance of 480.12 feet to the point of beginning, passing a 5/8 inch iron rod set at 446.66 feet.

Containing 96.722 acres, of which 1.218 acres are within the highway right-of-way.

The basis for bearings is the center-line of County Highway 37 at the center-line of Township Road 56, being S 83°-40'-00" W, and all other bearings are from angles and distances measured in a field survey by Lee Surveying and Mapping Co., Inc. on August 11, 2003.



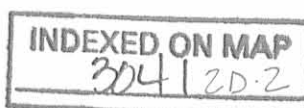
ORIGINAL STAMP IN GREEN

Description prepared by:

A handwritten signature in black ink, appearing to read 'Jeffrey I. Lee'.

Jeffrey I. Lee
Professional Surveyor 6359
August 12, 2003

L-3536



Lela N. Irvin to Everett H. Madden

The following described land situated in McArthur Township, Logan County, Ohio, and being part of original Military Survey No. 9903:-

Beginning at a stone in the center of County Road No. 221, being the southwest corner of a 40.00 Acre tract belonging to Henry Clay Cupp; thence with the center of said road N. 81° E. 536.3 feet to a stone; N. 72°-30' E. 940.5 feet to a stone; S. 63° E. 214.5 feet to a stone, and S. 51°-30' E. 554.4 feet to a stone being the northwest corner of a 79.25 acre tract belonging to Charles S. Mc Cleary; thence leaving said road and proceeding S. 33° W. 177.4 feet to a post in Cherokee Creek; thence with the center of said Creek S. 22° E. 511.5 feet; S. 25°-30' E. 165.0 feet, S. 1° E. 280.5 feet, and S. 8°-45' W. 726.0 feet to a post at the intersection with the old Harlan's Mill Race; thence continuing with the center of said Creek South 184.1 feet to the northeast corner of a 115.49 acre tract belonging to ~~Carrie Murdock's~~ ^{H. Clay Cupp;} thence with said ~~Murdock's~~ ^{Cupp's} north line S. 76° W. 1623.50 feet to a stone and brick south of said Race; thence N. 12°-30' W. 43.6 feet crossing said Race to a stone and brick; thence N. 12°-30' W. 2437.0 feet with the east line of Henry Clay Cupp's 38.13 acre tract to the place of beginning, containing 103.62 acres.

(This is the same land as 101.23 acres carried on the band Duplicate.)

3041 3D-1

INDEXED ON MAP

The following described land situated in McArthur Township, Logan County, Ohio, and being part of Original Military Survey No. 9903 & 9928:-

Beginning at an iron bar and stone in the center of County Road No. 221, being the northwest corner of a 103.62 acre tract belonging to Lela M. Irvin; thence S. $64^{\circ}-30'$ W. 3.84 chains with said road to a stake 3 links west of the west end of a bridge over Cherokee Creek; thence continuing S. 43° W. 2.67 chains to an iron bolt; thence S. 68° E. 7.15 chains to a stake in the west line of Lela M. Irvin's 103.62 acre tract; thence N. $12^{\circ}-30'$ W. 6.23 chains with said Irvin's west line to the place of beginning, containing 2.04 acres.

3041 3D-2

INDEXED ON MAP