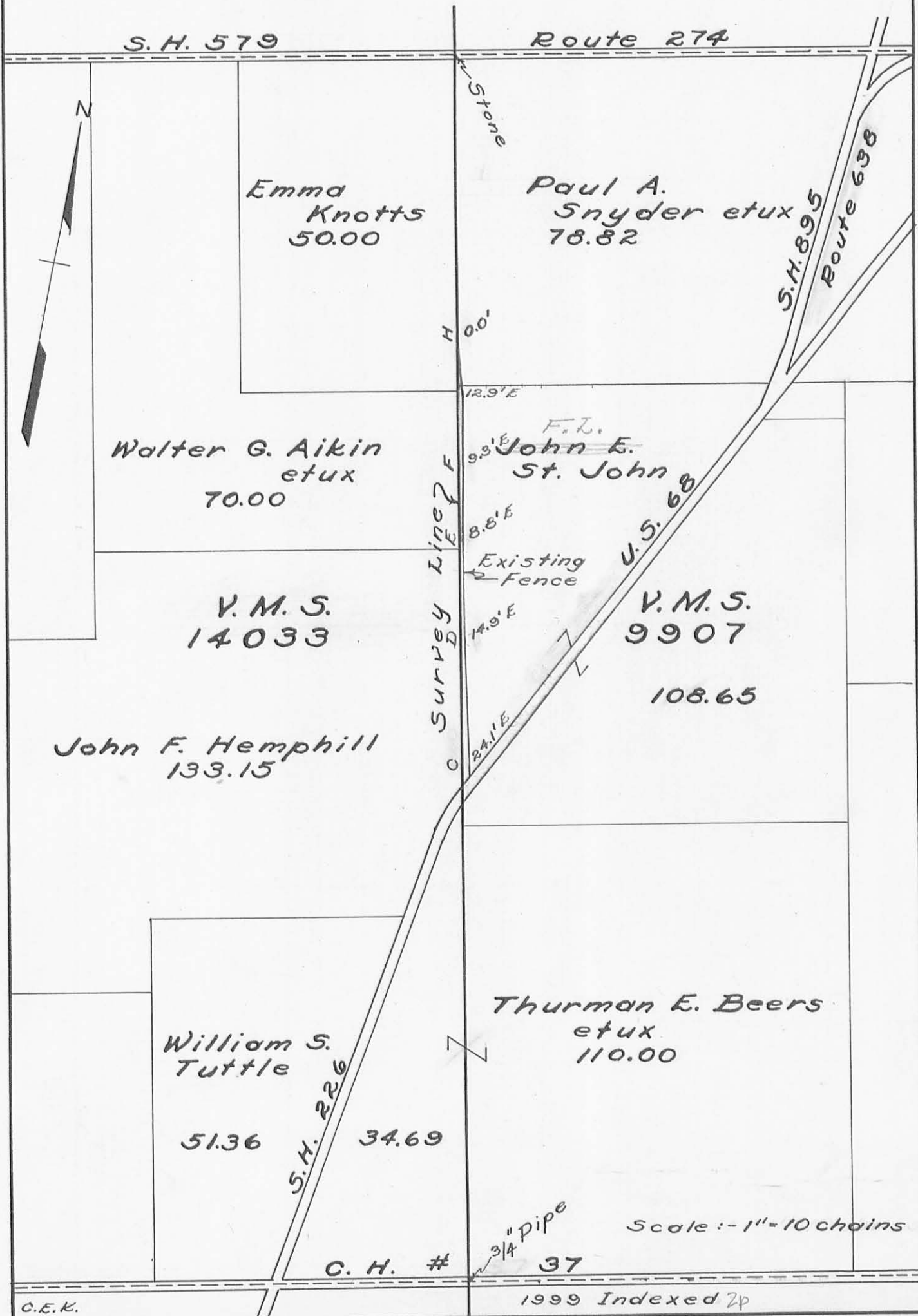


PLAT SHOWING RELATIONSHIP
between
EXISTING FENCE and SURVEY LINE
between
V.M.S's 14033 and 9907 **MCARTHUR TWP.**
LOGAN COUNTY **OHIO**



11 May 49

Survey Line Survey
between VMS 14033 & 9907
McArthur Twp.

Ch. #37 FB 552 pg 63

Sta.	Relationship of Pandern Line to Survey Line	Relationship of fence to Survey Line
C	17.93'E	24.13'E
D	10.89'E	14.89'E
E	4.84'E	8.84'E
F	30.68'W	9.32'E
G	97.19'W	
H	81.1'W	0.0'
I	0.0'	0.0'

Party - C. Kassar

T. Nelson

V. Patrick

H. Kassar

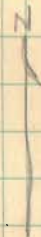
Walter G. Aiken
+ + + + +

John E. St. John

Hub D
6+60
0° 1' 30" L
(0° 3' 00")

John F. Hemphill

VMS 14033



Hub 22+100
30° 10' 00" L
(30° 21' 20")

John E. St. John

Survey Line

VMS 9907

Rebecca J. Connor

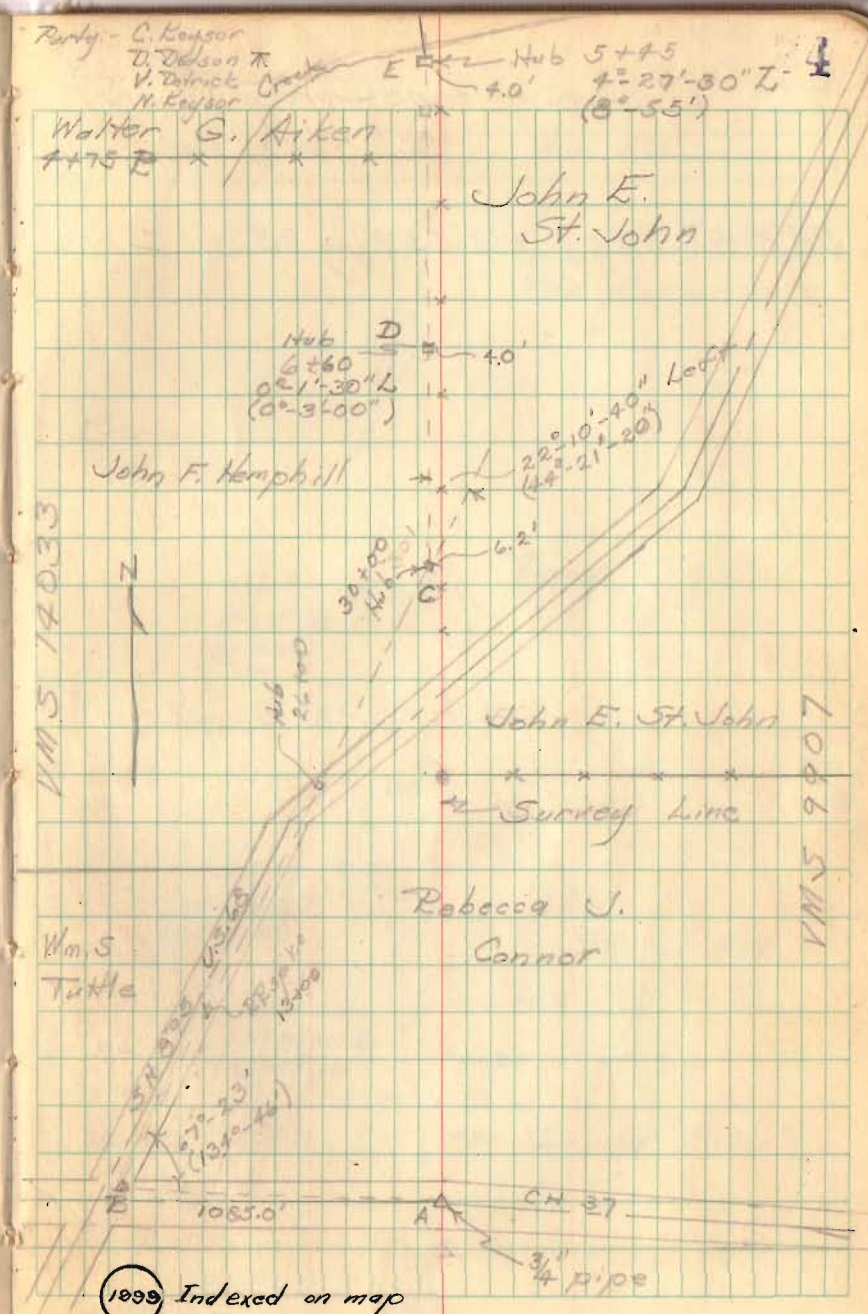
Wm. S. Tuttle

1069

Indexed on map

Ch. 37

3/4 pipe

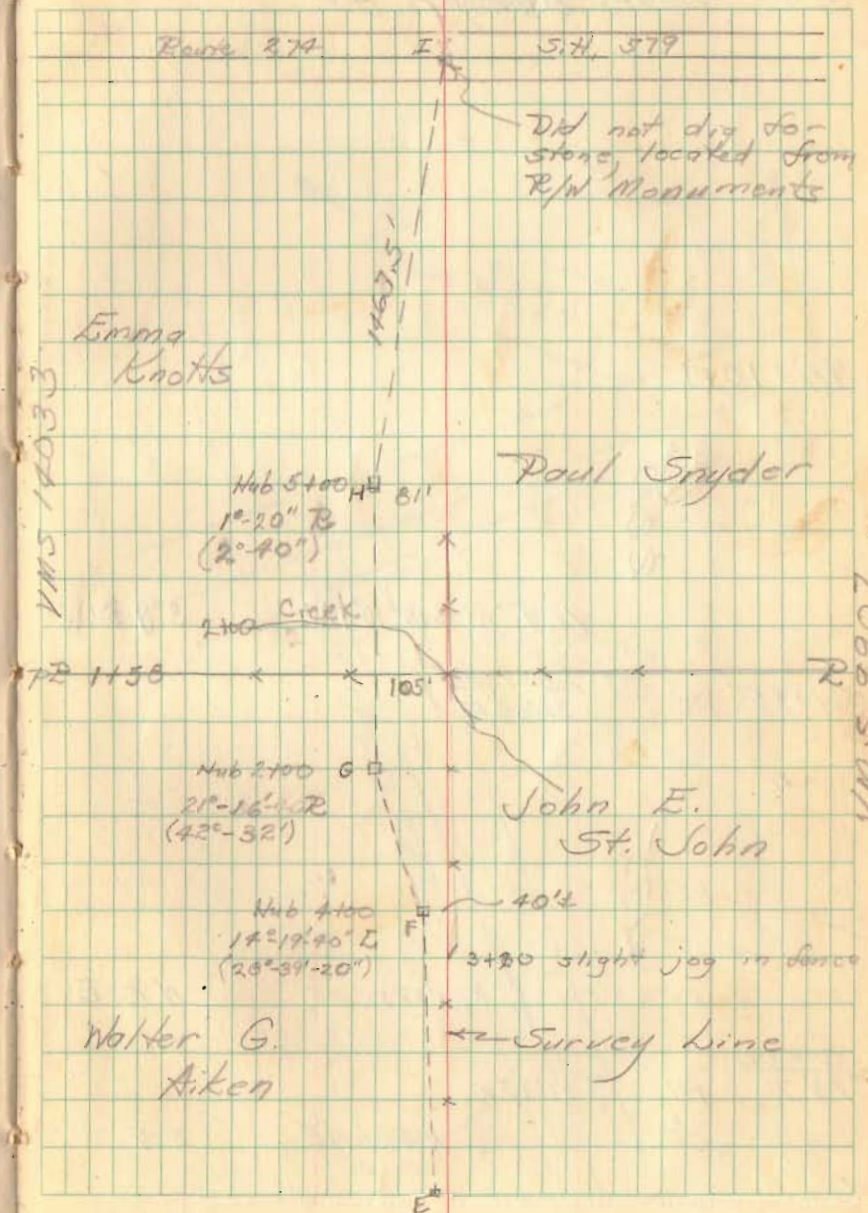


Survey Line Survey (contd)

SH 579 (CH 22) FB 559 pg 75

Party: C. Kayser
D. Dodson
Y. Detrick

14 May 49
75



Survey Line Survey
Sta. D.M. Del. High Cal. Bear.

44+10 PI

2270-

105° 15' RL S. 15° 10' 40" W

S. 8° 30' W

21+35 PI

105° 15' RL
74° 45' RL

2135-

105° 15' RL N. 89° 55' 40" E

N. 63° E

0+00
PI

PI

86° 45' RL

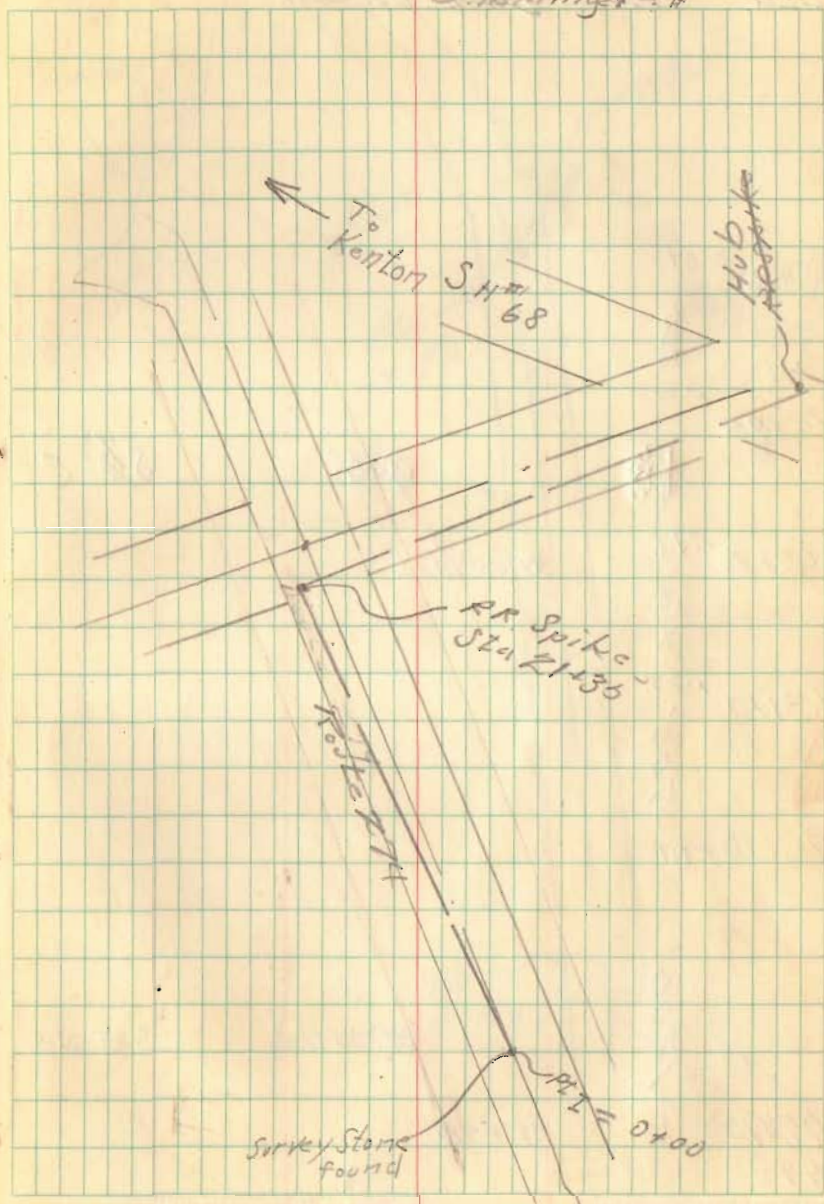
N. 3° 10' 40" E

N. 4° W

July 23, 1949

O. Shirk ——— ch.
D. Dodson ——— ch.
D. Mitchell ——— ch.
B. Heringer ——— ch.

76



Survey Line Survey Cont.

Sta: Dist D.P.L. Cal. Bearing Mag. Bearings

PLC

N 21° 30' E

PLA

112° 32' E

1080

92+13 = PLA

18'

S 88° 57' W

92+013 PI

88° 57' E

65'

85+70 P.O.T.

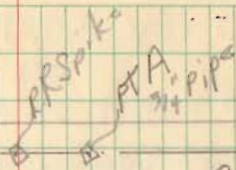
445'
570'

80+85

P.O.T.

South

78



A 80+95