

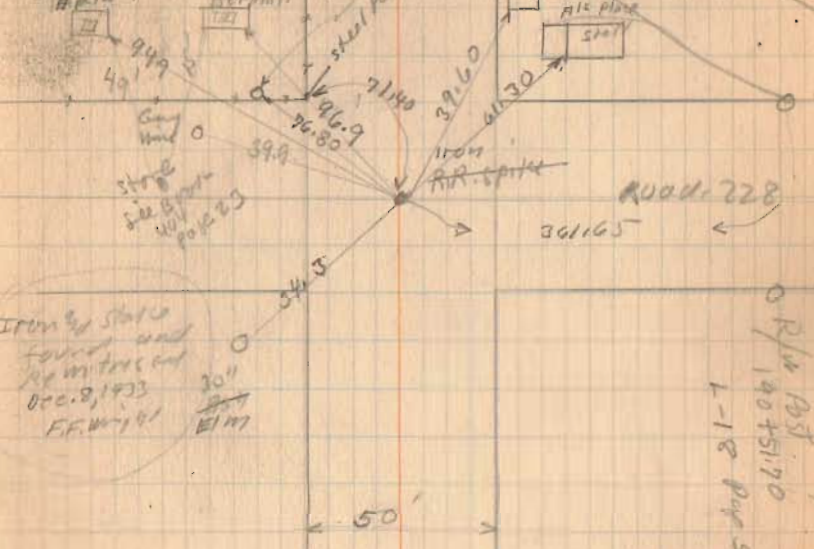
Fulton Cemetery

1877-1924  
H.P.M.

July 4-1880  
Morton Merrill

8 Blocky  
shel Post

SH. 222



Iron & State  
Found and  
Reinterred  
Dec. 2, 1933  
F.F.W. 1901

30"  
E.M.

ROAD 228

o R/L  
1905-1910  
L-18  
Pop 500

1503

INDEXED ON MAP

Bridge 190+

Top Br 5.4

channel 12.4

Cross section

Sp	16	11	00	13	18
Sp	9.1	6.1	5.6	5.8	8.8

2 x 26' stone walls to connect

14' off for clearance

1503

INDEXED ON MAP

Public Road

See Box  
471  
Page 32

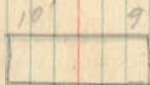
T = 194.1293

 $\Delta = 74^{\circ}15'$  $\square = 12^{\circ}$ 

T = 361.44

PC = 190+51.7

190+27



Span 8'  
Wood Top  
Stone Walls  
back  
new