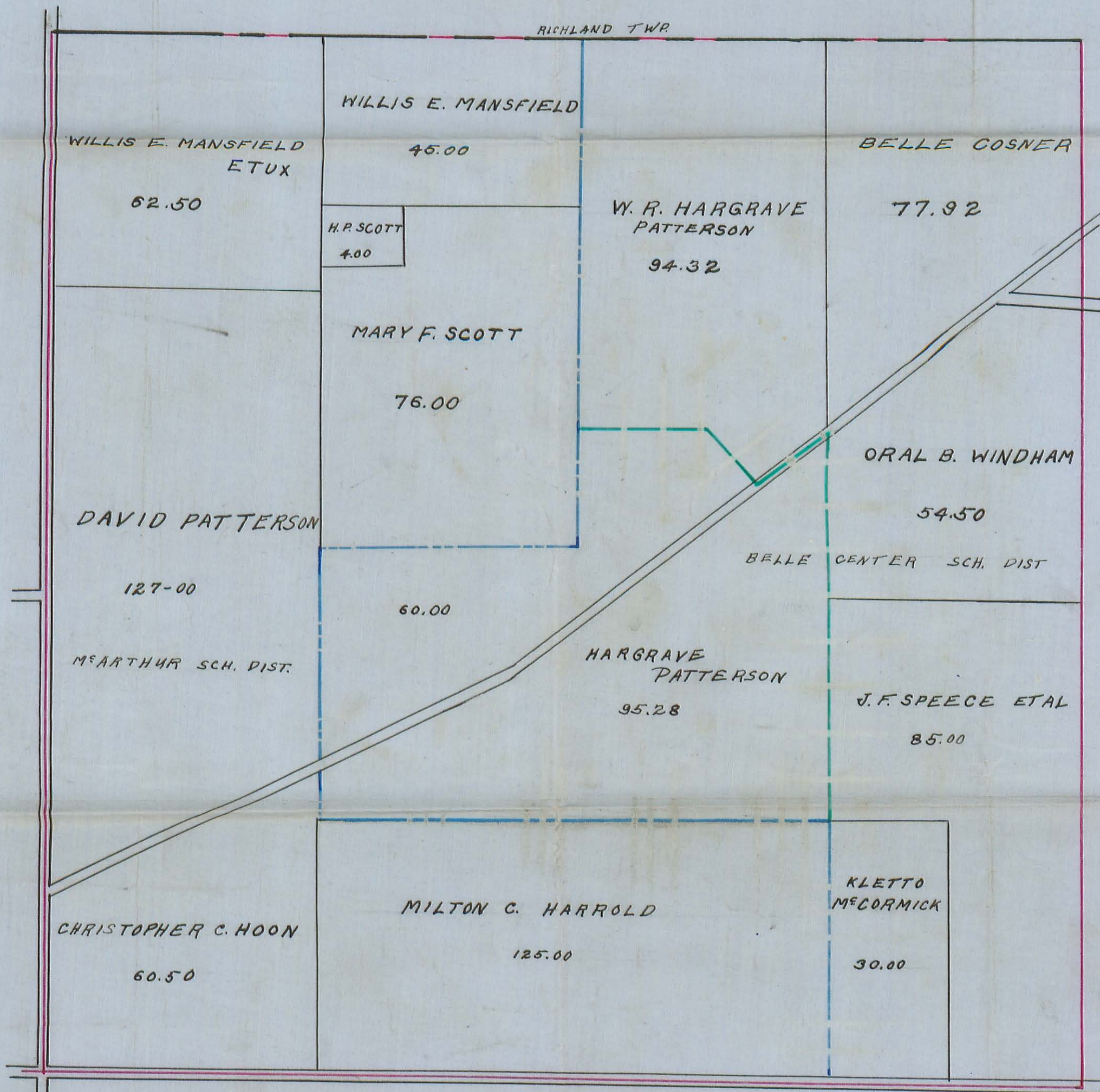


Transfer of Patterson land

(941) 1P

McARTHUR TOWNSHIP
PLAT OF V. M. S. # 9931



THIS PLAT REPRESENTS THE TRASFER OF
W. R. HARGRAVE PATTERSON'S LAND FROM
McARTHUR SCHOOL DISTRICT TO BELLE CENTER
Aug. 13, 1928

— = PRESENT LINE
— = FORMER LINE