

Field Notes.
 Me Arthur Tup.
 Sam'l Hover farm SURV.

NOV 21st 1902.

East line Hover farm. Path. pike N 7 3/4 W

166 1/2 fut = 25.17 ch.

West line, same, N 7 3/4 W 1683 ft = 25.50 ch

N. line " N 82 3/4 E 3270 ft. = 49.54 ch.

S. " " S 82 1/4 W 3268 1/2 ft = 49.52 ch

North line run by transit from a. to d. straight

south " " center stakes proposed pike "

"a." stake corner to Jas. A. Peoples & Geo
 Hover. at 1 foot N. of north end post in line

"b." stake corner Geo & Robt. Hover mit.

" Beech 20" S 80 3/4 W 31.9 fut.

" W. Elm 20" S 65 E, 5.2 fut.

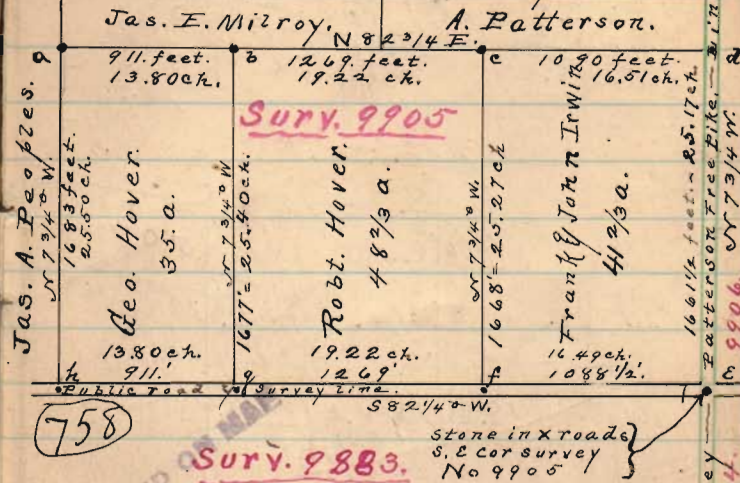
"c" stake corner Robt. Hover & Linn Bros

" mit. Black Mal. 12" N 82 E 18.6 fut.

"d." post. center Patterson free pike north
 east corner Sam'l Hover farm.

e. stone in X roads south east cor. Surv.
 9905. and S.E. cor. Sam'l Hover farm.

Sub divided, Nov. 21st 1902. by S. A. B.



- f. Stake. corner Linn Bros &
 " Robt. Hover. mit. Beech 24" N 4 W
 " 27.7 fut. of Shel Hick 6" N 49 1/2 W. 37.7 fut.
 "g" stake corner Robt. & Geo. Hover. mit. Elm
 " 15" N 47 1/2 E 36.8 fut. of Shel Hick 8" N 74 W 53.3 fut.
 "h" stake in line in fence. S.W. corner
 Sam'l Hover farm. mit. Ash 18" N. 15 W.
 46.2 fut Black Mal. 5" N 39 1/2 E 36.8 fut.
 For Survey notes see page
 67 to 69 of this Book.