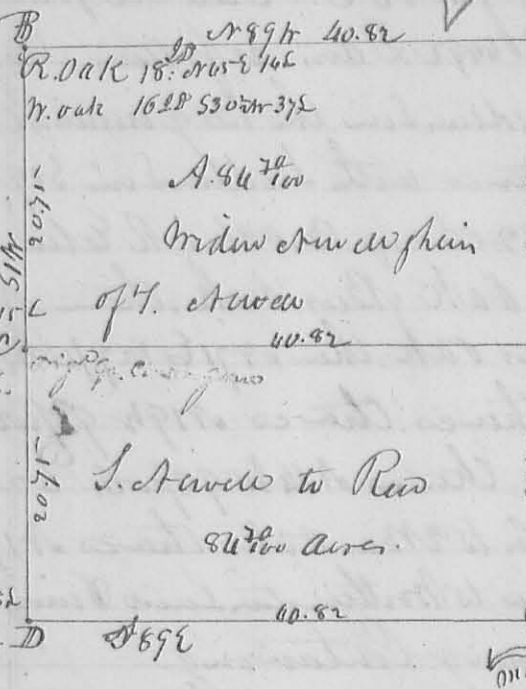


270

May 1837

N<sup>o</sup> 379

W. Corner of the Section



Stems E. Corner to H. W. White  
 This plat represents the survey and sub division of the NW 1/4 of Sec. 8. T. 5. R. 13. N. W. D. made for S. A. New say. May 10. 1837.  
 S. A. Hopkins Co. Sur. S. C.

8411

W. Oak 20 1/2 S 61 1/2 W 11 1/2 N 16 1/2 E 53 1/2 W 37 1/2

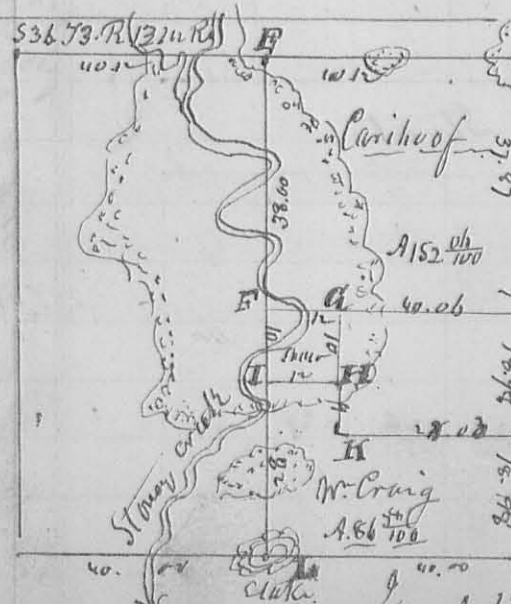
State by 16 1/2 S 61 1/2 W 11 1/2 N 16 1/2 E 53 1/2 W 37 1/2

N<sup>o</sup> 380

Surveyed May 26. 1837 for Joseph Wallaw part of Military Survey N<sup>o</sup> 9903 as follows. Beginning in the West end of a line survey at a W. Oak log wood & Elm on a hill side, thence S 45 E 40 poles to a Bur Oak with bend of a creek thence S 50 1/2 E 18 poles, to a Red Oak, thence S 75 1/2 E 30 1/2 poles crossing the bend of a Creek at 20 poles to a large White Oak thence S 14 1/2 E 152 1/2 poles crossing a Creek at 20 poles to a State on the south side of a Mill Race, thence on the South and West side of said Race N 65 1/2 W 3 1/4 poles to a State, thence N 25 W 18 poles to a State, thence N 80 W 48 poles to White Oak in the West end of the Survey, thence N 11 1/2 W to the beginning containing Acres.  
 S. A. Hopkins Co. Sur. S. C.

8412

N<sup>o</sup> 380



Stems E. Corner, a true Meridian with 40 E variation - Description of Corner -  
 A. W. Oak 12 1/2 S 10 1/2 W 26 Sinks the other down.  
 B. Stone & White Oak 30 1/2 N 33 E 26 Sinks  
 C. W. Oak N 83 W 26 Sinks. Wide over 11 1/2 S 57 E 49 1/2  
 D. Stone in Prairie. Set C corner  
 E. White Oak 18 1/2 E 40 Sinks  
 Bur. Oak 20 1/2 S 78 W 27 1/2 H. W. D. 15 1/2 S 92 1/2 W 32  
 A. F. A. H. L. State in a Prairie -  
 S. A. Hopkins Co. Sur. S. C.

8413

June 1. 1837