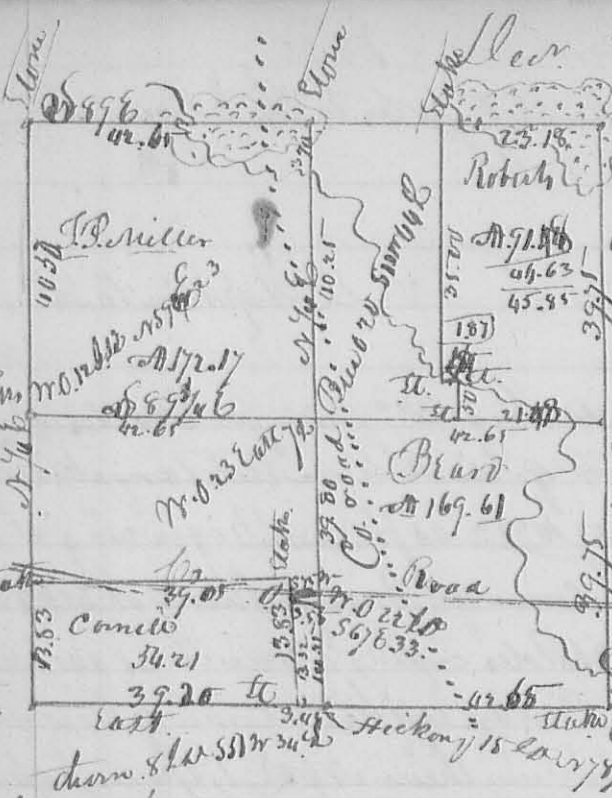


N. 300



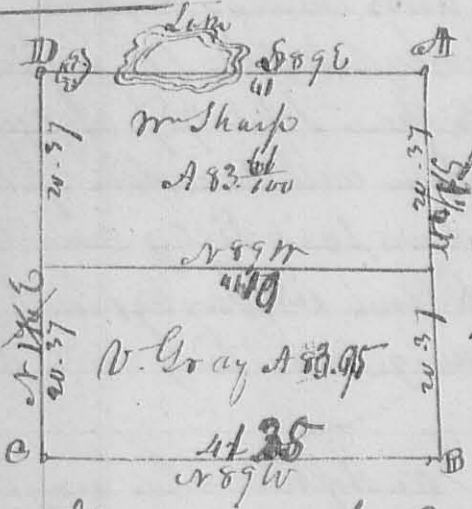
Dec. 1835 ✓
 State Lake O. a. l. P. N. 69 1/2 E. 107 Links
 to 1st S. 82 E 102 1/2 Links -
 Cornelia O. S. 75 W 355 Links N. 22 E 56 1/2
 32 Links in a N. O. 16 W. S. 9 W 49 E. Hick
 12 E. P. N. 89 E 56 Links
 Wh. O. 15 W. S. 21 E 8 Links.

This plat represents the survey &
 sub-division of S. 33. T. 5. R. 12. W. 2. N.
 between P. Miller, Cornelia &
 Robert.

John Richards & John McSmith & John Samples & others
 Dec. 1835
 John Richards & John McSmith & John Samples & others
 Dec. 1835
 John Richards & John McSmith & John Samples & others
 Dec. 1835
 John Richards & John McSmith & John Samples & others
 Dec. 1835

N. 301

8363



Surveyed & sub. divided, Dec. 10. 1835
 for Sharp & Gray the N. W. q. of S. 1. T. 5. R. 12. W. 2. N.
 as follows: Begining at station
 N. E. corner of the q. then N. 89 W. 41
 3/4 Links to station (see letter B) then W. N. 89 W
 41 chain 35 Links to station, then W. N. 89 W
 40 ch. 75 Links to the NW corner of the
 section. a white oak 18 1/2 D. N. 70 E 41
 Links, then N. 89 E 41 ch. to the beginning. Containing 167 1/2
 divided from center of West line beginning at a Black oak
 14 W. N. 22 1/2 E 82 Links, then N. 89 E 41 ch. 19 Links to
 White oak W. S. 75 W 45 Links same 15 W. N. 82 E 47 1/2
 center of East line of the spot.

John Grindley
 J. A. Hopkins } Ch. Cor.
 Dec. 10. 1835

Dan Hopkins L. C. Surveyor