

March 18. 1835

2215

N.W. cor.

than Scaman's land or poles, to wit. at the N.E. corner of Worthington Survey N^o 4399, in the line of R. Davis Survey N^o 3683 and S.E. Corner to Saml. Wallace's Survey N^o 2873. Original call, 3 White Oaks, two of them now cut down. Stumps standing about two feet high, one yet stands about 15 inches in diameter bears 57¹/₂ links distant, planted here a Blue Lime Stone of a triangular form about one foot under ground marked thus: X. thence Surveyed that North line of said Survey N^o 4399 running from said triangular Stone West 1/4th Pole, crossing a small branch at 12¹/₂ poles about of the same at 16¹/₂ poles, a Gum Wight tree 10 inches in diameter at 24 poles, to the N.W. corner of said Survey N^o 4399 in said Miller's South line, Original call, two Gum & White Walnut, all now down and in a decaying condition, planted here a flat Sand Stone marked X from which a hickory 6 inches in diameter bears 166¹/₂ links distant.

beginning - 36.05

I certify the foregoing to be a true copy of Survey made by me in pursuance of an agreement of the parties concerned all of whom have by a notice of the line & place of making the same, and that Jonathan Scaman & Joshua Pett were present as chain carriers, and George Scaman as Blazer.

Geo. Hopkins L. C. Surveyor

N^o 271

8345

Surveyed March 19th 1835 for Robert Satchers the S.E. 1/4 of S18. T3. R14 MRS as follows. Beginning at the Corner between sections 11, 12, 17, 18 of T3. R14. at a Stone the original corner tree down, thence N 75^o E 40 chains to a White Oak 20th N 23^o E 20 Links, and White Oak 12th S 14^o E 16 Links thence N 89^o W 40 ch. 65 Links to a Stone White Oak 18th S 22^o E 19¹/₂ Links, and White Oak 12th S 22^o W 68¹/₂ Links, thence N 75^o W 40 ch. 46 Links to a stake in a spring, and in the South line of the Section, thence with said line S 89^o E 40 ch. 65 Links, to the beginning containing 164³/₄ acres.

Geo. Hopkins L. C. Surveyor

N^o 272

8346

March 20th 1835 for J. P. Miller the South half of S 28, T 3, R 13 MRS Beginning at the N.W. corner of the section a White Oak 20th N 40^o E 14 Links, and White Oak S 30^o W 15 Links, thence N 7^o E 40 chains to Stone & White Oak 15th S 15^o W 38 Links, Hickory 16th W 30^o E 38 Links, then S 89^o E 80 chains, crossing several roads and Mad Run to a Stone, thence S 16^o W 60 ch to a Stone, thence S 89^o W 80 ch

to the beginning containing 30 acres

Dan Hopkins L. C. Surveyor

N^o 273

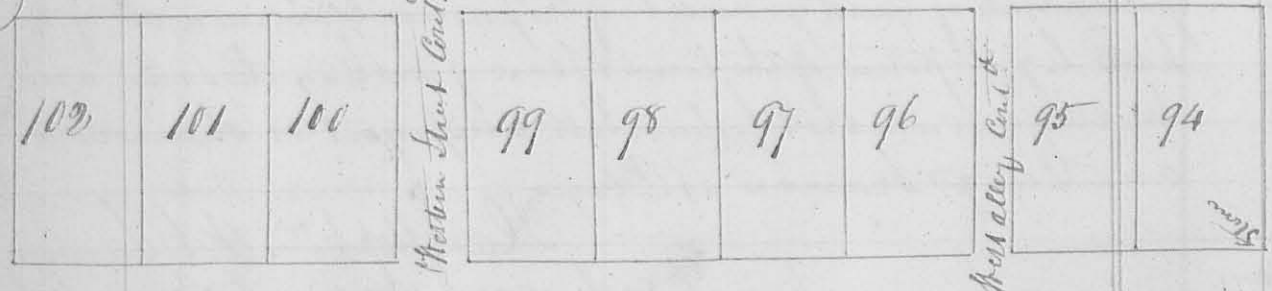
Surveyed for J. P. Miller a lot of ^{land} embracing the Carding
 Machine south of the town of West Liberty being a part of
 the N^o 9th of S 27 35 R 13 W N 1 or follow beginning at a stake
 in the side of the Road a cherry 12 1/2 ft. bears S 67 1/2 W 50 Links
 then with said Road S 15 1/2 E 4 chains to a stake then S 75 W
 5 chains to a White Oak S 85 D S 45 1/2 E 37 links then N 15 W 4 ch
 to a Jack Oak S 8 D S 77 E 12 1/2 Links and same 10 D N 7 1/2 W
 12 1/2 Links then S 75 E 5 chains to the beginning containing
 30 Acres

Dan Hopkins L. C. Surveyor

N^o 274

Addition to Middleburg by Levi Grubbs & William Grubbs

(8271)



North Street of former addition 60 feet wide

Surveyed April 2nd 1835 for ~~the~~ Grubbs an Addition to the former
 plat of Middleburg in Logan as shown by the foregoing plat from
 lot N^o 94 the S.E. corner of which represents the S.W. corner of lot N^o 66 of
 a former addition (see page 190) at which stone is planted marked F
 to lot N^o 102 inclusive; which lots were surveyed beginning at a stone
 at the stone fronting on North Street which form West to East S 42 1/2 E
 66 feet extending back N 47 E 133 feet. Western Alley Continued is
 18 1/2 feet wide, Western Street Continued is 33 feet wide At the
 same time

Also