

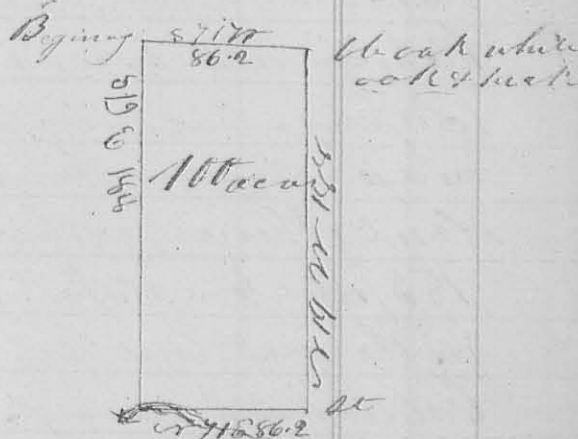
8<sup>th</sup> mo. Aug. 13<sup>th</sup> 1830

Surveyor 1142

Surveyed one hundred acres for Christopher Piper, beginning at a black oak stump in the road, from Bellefontaine to Urbana, the north west corner of Samuel Finley's Survey no 449 & 4525 in Ludlow's line thence with said line  $S 71^{\circ} E$  (magnetic variation) 188 poles crossing the road from Jamesfield to Westberry at 90 poles to a stake in Mad River near its eastern bank, thence  $S 71^{\circ} E$  crossing the old chan-

8246

nel of the river at 20 poles, the channel which Meets made at 27 poles, (86.2 poles to a stake in the prairie thence  $S 19^{\circ} W$  crossing the road from Jamesfield to Westberry, 188 poles to a black oak white oak and Hickory bush in the north line



of the original survey; thence  $S 71^{\circ} E$  86.2 poles (with the original line, to the beginning, being in the north west corner of Finley's said Survey - John Hill } C.C., La M. Warner } C.C.P.C.

8<sup>th</sup> mo. (Aug.) 13<sup>th</sup> 1830. Surveyor 1143

Surveyed 100 acres of land for John Smith. Beginning at a stake in the east line of sec 30 in Town. 5 R. 13, the q<sup>r</sup> sec. corner in said line and corner between Jno. Shelby & Jno. Smith - thence  $S 89^{\circ} E$  100 poles to a Hickory 15 in. diam.  $S 48^{\circ} W$  28 links dist, a hickory  $S 15^{\circ} W$  10 links dist. thence  $S 1^{\circ} W$  160 poles, a black oak  $S 46^{\circ} W$  34 links dist. in the north line of T. 24. S. 5 R. 13 M.R. thence with said line west, 100 poles to the N.E. corner of sec. 35 in said T. & R.; thence with the east line thereof 160 poles to the beginning it being in the N.W. corner of said sec 24 - John Hill, James Smith C.C. - La M. Warner C.C.P.C.

