

REC'D 12-18-06 SMY OK

Lee Surveying and Mapping Co., Inc.

Land Surveys • Topography • Subdivisions • Construction Layout

117 N. Madriver St.
Bellefontaine OH 43311



Phone: (937) 593-7335
Fax: (937) 593-7444

1975-2005 - 30 YEARS OF EXCELLENCE

**ZEUS INVESTMENTS, INC.
5.698 ACRES**

Lying in Section 28, Town 5, Range 13, Village of West Liberty, Liberty Township, Logan County, Ohio.

Being all of the Zeus Investments, Inc., 5.70 acre tract as deeded and described in Official Record 753, Page 172, Parcel II of the Logan County Records of Deeds and being more particularly described as follows:

Commencing on a railroad spike found on the intersection of center-lines of County Highway 14 and County Highway 189.

THENCE, with the center-line of County Highway 189 (60 feet wide), S 16°-30'-00"E, a distance of 1657.74 feet to a MAG nail set at the TRUE POINT OF BEGINNING.

THENCE, with the center-line of County Highway 189, S 16°-30'-00"E, a distance of 358.24 feet to a MAG nail set.

THENCE, with the lines of the Adriel School, Inc., 68.54 acre tract (O.R. 12, Pg. 654), the following two courses:

S 73°-30'-00"W, a distance of 532.82 feet to a 5/8 inch iron rod set, passing a 5/8 inch iron rod set at 30.00 feet.

N 16°-30'-00"W, a distance of 573.51 feet to a 5/8 inch iron rod found.

THENCE, with the south line of the Zeus Investments, Inc., 9.30 acre tract (O.R. 753, Pg. 172, Parcel I), S 84°-30'-00"E, a distance of 574.66 feet to the point of beginning, passing a 5/8 inch iron rod set at 542.30 feet.

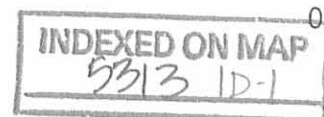
Containing 5.698 acres, of which 0.251 acre is within the highway right-of-way.

The basis for bearings is the center-line of County Highway 189, south of County Highway 14, being S 16°-30'-00"E, and all other bearings are from angles and distances measured in a field survey by Lee Surveying and Mapping Co., Inc. on December 13, 2006.

Description prepared by:



[Signature]
Jeffrey I. Lee
Professional Surveyor 6359
December 14, 2006



0104126

REC'D 12-18-06 SAM OK
Lee Surveying and Mapping Co., Inc.

Land Surveys • Topography • Subdivisions • Construction Layout

117 N. Madriver St.
Bellefontaine OH 43311



Phone: (937) 593-7335
Fax: (937) 593-7444

1975-2005 - 30 YEARS OF EXCELLENCE
ZEUS INVESTMENTS, INC.
1.518 ACRES

Lying in Section 28, Town 5, Range 13, Village of West Liberty, Liberty Township, Logan County, Ohio.

Being out of the Zeus Investments, Inc., 9.30 acre tract as deeded and described in Official Record 753, Page 172, Parcel I of the Logan County Records of Deeds and being more particularly described as follows:

Commencing on a railroad spike found on the intersection of center-lines of County Highway 14 and County Highway 189.

THENCE, with the center-line of County Highway 189 (60 feet wide), S 16°-30'-00"E, a distance of 1426.03 feet to a MAG nail set at the TRUE POINT OF BEGINNING.

THENCE, with the center-line of County Highway 189, S 16°-30'-00"E, a distance of 231.71 feet to a MAG nail set.

THENCE, with the north line of the Zeus Investments, Inc., 5.70 acre tract (O.R. 753, Pg. 172, Parcel II), N 84°-30'-00"W, a distance of 574.66 feet to a 5/8 inch iron rod found, passing a 5/8 inch iron rod set at 32.36 feet.

THENCE, with the east line of the Q3 Comdyne Cylinders, Inc., 51.73 acre tract (O.R. 251, Pg. 231), N 16°-30'-00"W, a distance of 16.44 feet to a 5/8 inch iron rod set.

THENCE, N 73°-30'-00"E, a distance of 532.82 feet to the point of beginning, passing a 5/8 inch iron rod set at 502.82 feet.

Containing 1.518 acres, of which 0.155 acre is within the highway right-of-way.

The basis for bearings is the center-line of County Highway 189, south of County Highway 14, being S 16°-30'-00"E, and all other bearings are from angles and distances measured in a field survey by Lee Surveying and Mapping Co., Inc. on December 13, 2006.

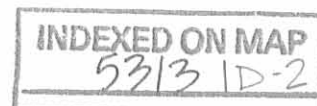
Description prepared by:



ORIGINAL STAMP IN GREEN

A handwritten signature in black ink, appearing to read 'Jeffrey I. Lee'.
Jeffrey I. Lee
Professional Surveyor 6359
December 14, 2006

0104126



BEID 12-18-06 SMOKE
Lee Surveying and Mapping Co., Inc.

Land Surveys • Topography • Subdivisions • Construction Layout

117 N. Madriver St.
Bellefontaine OH 43311



Phone: (937) 593-7335
Fax: (937) 593-7444

1975-2005 - 30 YEARS OF EXCELLENCE
ZEUS INVESTMENTS, INC.
7.779 ACRES

Lying in Section 28, Town 5, Range 13, Village of West Liberty, Liberty Township, Logan County, Ohio.

Being out of the Zeus Investments, Inc., 9.30 acre tract as deeded and described in Official Record 753, Page 172, Parcel I of the Logan County Records of Deeds and being more particularly described as follows:

Commencing on a railroad spike found on the intersection of center-lines of County Highway 14 and County Highway 189.

THENCE, with the center-line of County Highway 189 (60 feet wide), S 16°-30'-00"E, a distance of 790.09 feet to a MAG nail set at the TRUE POINT OF BEGINNING.

THENCE, with the center-line of County Highway 189, S 16°-30'-00"E, a distance of 635.94 feet to a MAG nail set.

THENCE, S 73°-30'-00"W, a distance of 532.82 feet to a 5/8 inch iron rod set, passing a 5/8 inch iron rod set at 30.00 feet.

THENCE, with the east lines of the Q3 Comdyne Cylinders, Inc., 51.73 acre tract (O.R. 251, Pg. 231) and the Village of West Liberty, West Liberty, Ohio 0.23 acre tract (Vol. 374, Pg. 867), N 16°-30'-00"W, a distance of 635.94 feet to a 5/8 inch iron rod set.

THENCE, with a southerly line of the said 51.73 acre tract, N 73°-30'-00"E, a distance of 532.82 feet to the point of beginning, passing a 5/8 inch iron rod set at 502.82 feet.

Containing 7.779 acres, of which 0.438 acre is within the highway right-of-way.

The basis for bearings is the center-line of County Highway 189, south of County Highway 14, being S 16°-30'-00"E, and all other bearings are from angles and distances measured in a field survey by Lee Surveying and Mapping Co., Inc. on December 13, 2006.



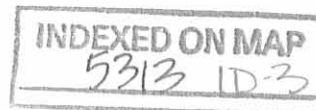
ORIGINAL STAMP IN GREEN

Description prepared by:

A handwritten signature in black ink, appearing to read 'Jeffrey I. Lee'.

Jeffrey I. Lee
Professional Surveyor 6359
December 14, 2006

0104126

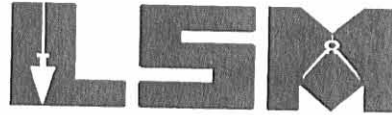


REV'D 12-18-04 SAM OK

Lee Surveying and Mapping Co., Inc.

Land Surveys • Topography • Subdivisions • Construction Layout

117 N. Madriver St.
Bellefontaine OH 43311



Phone: (937) 593-7335
Fax: (937) 593-7444

1975-2005 - 30 YEARS OF EXCELLENCE

ZEUS INVESTMENTS, INC.

10.00 FEET WIDE UTILITY EASEMENT #1

Lying in Section 28, Town 5, Range 13, Village of West Liberty, Liberty Township, Logan County, Ohio.

Being a 10.00 feet wide utility easement over the Zeus Investments, Inc., 9.30 acre tract as deeded and described in Official Record 753, Page 172, Parcel I of the Logan County Records of Deeds and being more particularly described as follows:

Commencing on a railroad spike found on the intersection of center-lines of County Highway 14 and County Highway 189.

THENCE, with the center-line of County Highway 189 (60 feet wide), S 16°-30'-00"E, a distance of 1426.03 feet to a MAG nail set.

THENCE, S 73°-30'-00"W, a distance of 265.09 feet to a point at the TRUE POINT OF BEGINNING, passing a 5/8 inch iron rod set at 30.00 feet.

THENCE, with the center-line of this easement, the following two courses:

N 27°-38'-54"W, a distance of 16.88 feet to a power pole found.

N 80°-02'-24"W, a distance of 255.17 feet to a power pole found at the terminus of this easement.

The basis for bearings is the center-line of County Highway 189, south of County Highway 14, being S 16°-30'-00"E, and all other bearings are from angles and distances measured in a field survey by Lee Surveying and Mapping Co., Inc. on December 13, 2006.



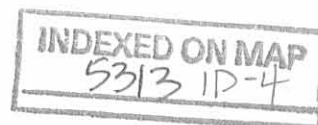
ORIGINAL STAMP IN GREEN

Description prepared by:

A handwritten signature in black ink, appearing to read 'J. Lee'.

Jeffrey I. Lee
Professional Surveyor 6359
December 14, 2006

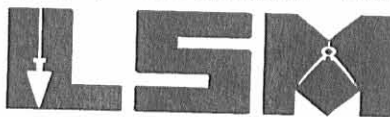
0104126



Lee Surveying and Mapping Co., Inc.

Land Surveys • Topography • Subdivisions • Construction Layout

117 N. Madriver St.
Bellefontaine OH 43311



Phone: (937) 593-7335
Fax: (937) 593-7444

1975-2005 - 30 YEARS OF EXCELLENCE

ZEUS INVESTMENTS, INC.

10.00 FEET WIDE UTILITY EASEMENT #2

Lying in Section 28, Town 5, Range 13, Village of West Liberty, Liberty Township, Logan County, Ohio.

Being a 10.00 feet wide utility easement over the Zeus Investments, Inc., 9.30 acre tract as deeded and described in Official Record 753, Page 172, Parcel I of the Logan County Records of Deeds and being more particularly described as follows:

Commencing on a railroad spike found on the intersection of center-lines of County Highway 14 and County Highway 189.

THENCE, with the center-line of County Highway 189 (60 feet wide), S 16°-30'-00"E, a distance of 1426.03 feet to a MAG nail set.

THENCE, S 73°-30'-00"W, a distance of 496.69 feet to a point at the TRUE POINT OF BEGINNING, passing a 5/8 inch iron rod set at 30.00 feet.

THENCE, with the center-line of this easement, the following five courses:

N 16°-32'-43"W, a distance of 130.26 feet to a power pole found.

N 16°-38'-16"W, a distance of 237.73 feet to a power pole found.

N 16°-38'-33"W, a distance of 238.17 feet to a power pole found.

N 73°-24'-50"E, a distance of 232.08 feet to a power pole found.

N 73°-38'-25"E, a distance of 234.02 feet to a power pole found at the terminus of this easement.

The basis for bearings is the center-line of County Highway 189, south of County Highway 14, being S 16°-30'-00"E, and all other bearings are from angles and distances measured in a field survey by Lee Surveying and Mapping Co., Inc. on December 13, 2006.



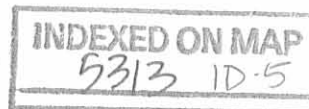
ORIGINAL STAMP IN GREEN

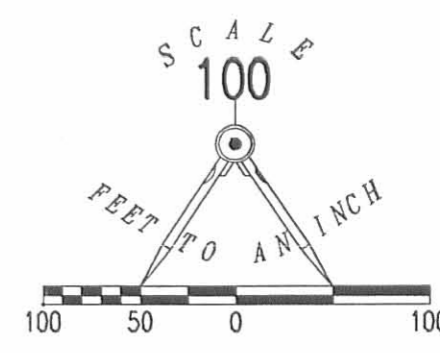
Description prepared by:

A handwritten signature in black ink, appearing to read 'J. Lee', written over the printed name and title.

Jeffrey I. Lee
Professional Surveyor 6359
December 14, 2006

0104126

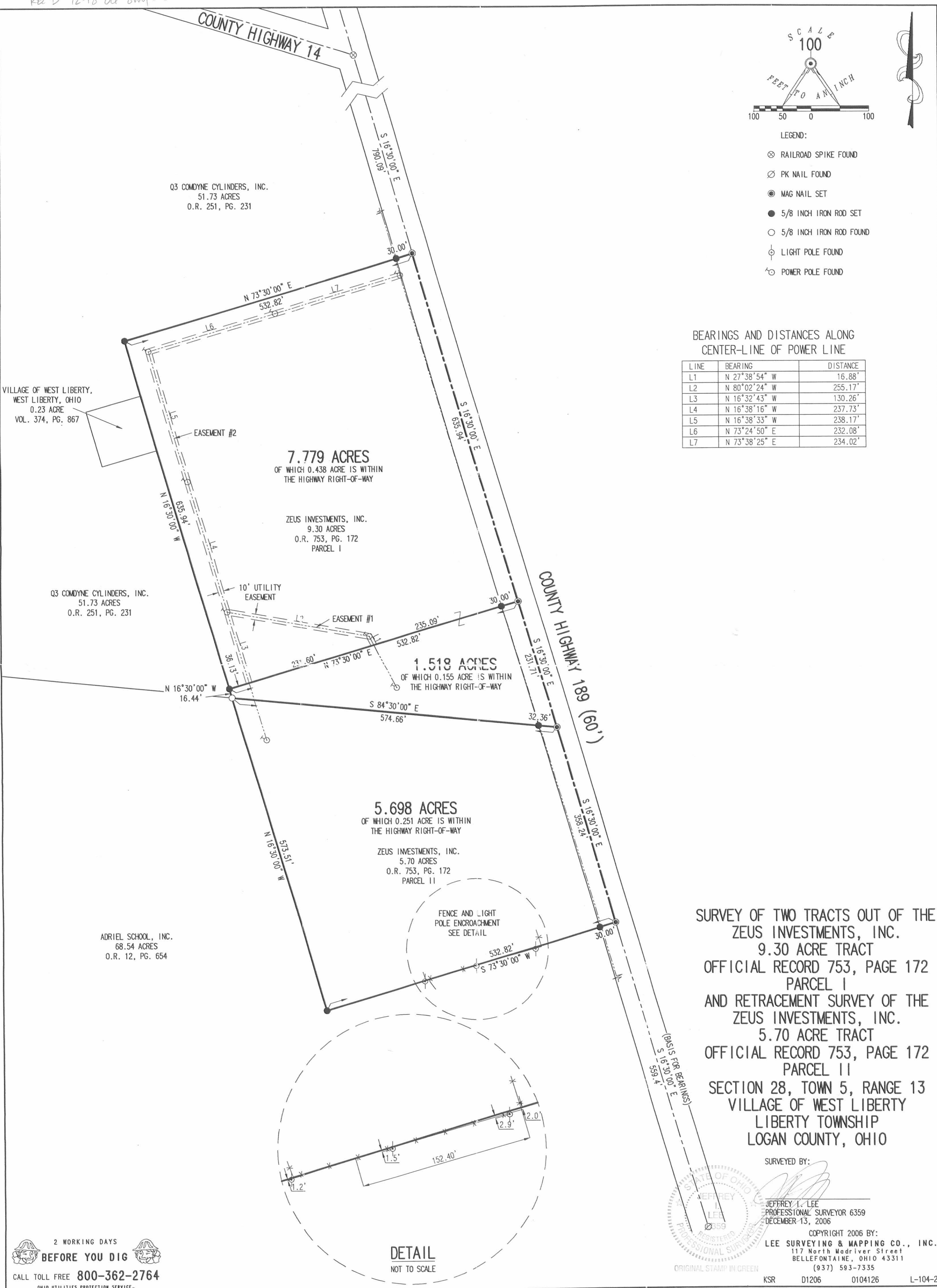




- LEGEND:
- ⊗ RAILROAD SPIKE FOUND
 - ⊙ PK NAIL FOUND
 - MAG NAIL SET
 - 5/8 INCH IRON ROD SET
 - 5/8 INCH IRON ROD FOUND
 - ⊕ LIGHT POLE FOUND
 - ⊖ POWER POLE FOUND

BEARINGS AND DISTANCES ALONG CENTER-LINE OF POWER LINE

LINE	BEARING	DISTANCE
L1	N 27°38'54" W	16.88'
L2	N 80°02'24" W	255.17'
L3	N 16°32'43" W	130.26'
L4	N 16°38'16" W	237.73'
L5	N 16°38'33" W	238.17'
L6	N 73°24'50" E	232.08'
L7	N 73°38'25" E	234.02'



VILLAGE OF WEST LIBERTY,
WEST LIBERTY, OHIO
0.23 ACRE
VOL. 374, PG. 867

Q3 COMDYNE CYLINDERS, INC.
51.73 ACRES
O.R. 251, PG. 231

7.779 ACRES
OF WHICH 0.438 ACRE IS WITHIN
THE HIGHWAY RIGHT-OF-WAY

ZEUS INVESTMENTS, INC.
9.30 ACRES
O.R. 753, PG. 172
PARCEL I

Q3 COMDYNE CYLINDERS, INC.
51.73 ACRES
O.R. 251, PG. 231

1.518 ACRES
OF WHICH 0.155 ACRE IS WITHIN
THE HIGHWAY RIGHT-OF-WAY

5.698 ACRES
OF WHICH 0.251 ACRE IS WITHIN
THE HIGHWAY RIGHT-OF-WAY

ZEUS INVESTMENTS, INC.
5.70 ACRES
O.R. 753, PG. 172
PARCEL II

ADRIEL SCHOOL, INC.
68.54 ACRES
O.R. 12, PG. 654

FENCE AND LIGHT
POLE ENCROACHMENT
SEE DETAIL

SURVEY OF TWO TRACTS OUT OF THE
ZEUS INVESTMENTS, INC.
9.30 ACRE TRACT
OFFICIAL RECORD 753, PAGE 172
PARCEL I
AND RETRACEMENT SURVEY OF THE
ZEUS INVESTMENTS, INC.
5.70 ACRE TRACT
OFFICIAL RECORD 753, PAGE 172
PARCEL II
SECTION 28, TOWN 5, RANGE 13
VILLAGE OF WEST LIBERTY
LIBERTY TOWNSHIP
LOGAN COUNTY, OHIO

SURVEYED BY:
JEFFREY L. LEE
PROFESSIONAL SURVEYOR 6359
DECEMBER 13, 2006



COPYRIGHT 2006 BY:
LEE SURVEYING & MAPPING CO., INC.
117 North Madriver Street
BELLEFONTAINE, OHIO 43311
(937) 593-7335

2 WORKING DAYS
BEFORE YOU DIG
CALL TOLL FREE 800-362-2764
OHIO UTILITIES PROTECTION SERVICE

DETAIL
NOT TO SCALE

ORIGINAL STAMP IN GREEN

KSR D1206 0104126 L-104-2

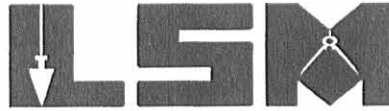
INDEXED ON MAP
5313 1P

REC'D 12-28-06 SUM OK

Lee Surveying and Mapping Co., Inc.

Land Surveys • Topography • Subdivisions • Construction Layout

117 N. Madriver St.
Bellefontaine OH 43311



Phone: (937) 593-7335
Fax: (937) 593-7444

1975-2005 - 30 YEARS OF EXCELLENCE

ZEUS INVESTMENTS, INC.

7.216 ACRES

Lying in Section 28, Town 5, Range 13, Village of West Liberty, Liberty Township, Logan County, Ohio.

Being part of the Zeus Investments, Inc., 9.30 acre tract and all of the 5.70 acre tract as deeded and described in Official Record 753, Page 172, Parcel I and Parcel II of the Logan County Records of Deeds and being more particularly described as follows:

Commencing on a railroad spike found on the intersection of center-lines of County Highway 14 and County Highway 189.

THENCE, with the center-line of County Highway 189 (60 feet wide), S 16°-30'-00"E, a distance of 1426.03 feet to a MAG nail set at the TRUE POINT OF BEGINNING.

THENCE, with the center-line of County Highway 189, S 16°-30'-00"E, a distance of 589.95 feet to a MAG nail set.

THENCE, with the lines of the Adriel School, Inc., 68.54 acre tract (O.R. 12, Pg. 654), the following two courses:

S 73°-30'-00"W, a distance of 532.82 feet to a 5/8 inch iron rod set, passing a 5/8 inch iron rod set at 30.00 feet.

N 16°-30'-00"W, a distance of 589.95 feet to a 5/8 inch iron rod set, passing a 5/8 inch iron rod found at 573.51 feet.

THENCE, N 73°-30'-00"E, a distance of 532.82 feet to the point of beginning, passing a 5/8 inch iron rod set at 502.82 feet.

Containing 7.216 acres, of which 0.406 acre is within the highway right-of-way.

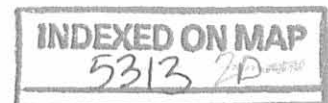
The basis for bearings is the center-line of County Highway 189, south of County Highway 14, being S 16°-30'-00"E, and all other bearings are from angles and distances measured in a field survey by Lee Surveying and Mapping Co., Inc. on December 13, 2006.



ORIGINAL STAMP IN GREEN

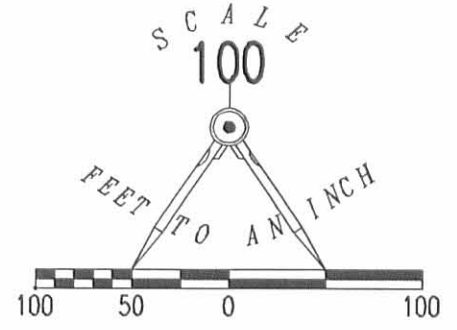
Description prepared by:

A handwritten signature in black ink, appearing to read 'Jeffrey I. Lee', is written over the typed name and title.
Jeffrey I. Lee
Professional Surveyor 6359
December 21, 2006



0104126A

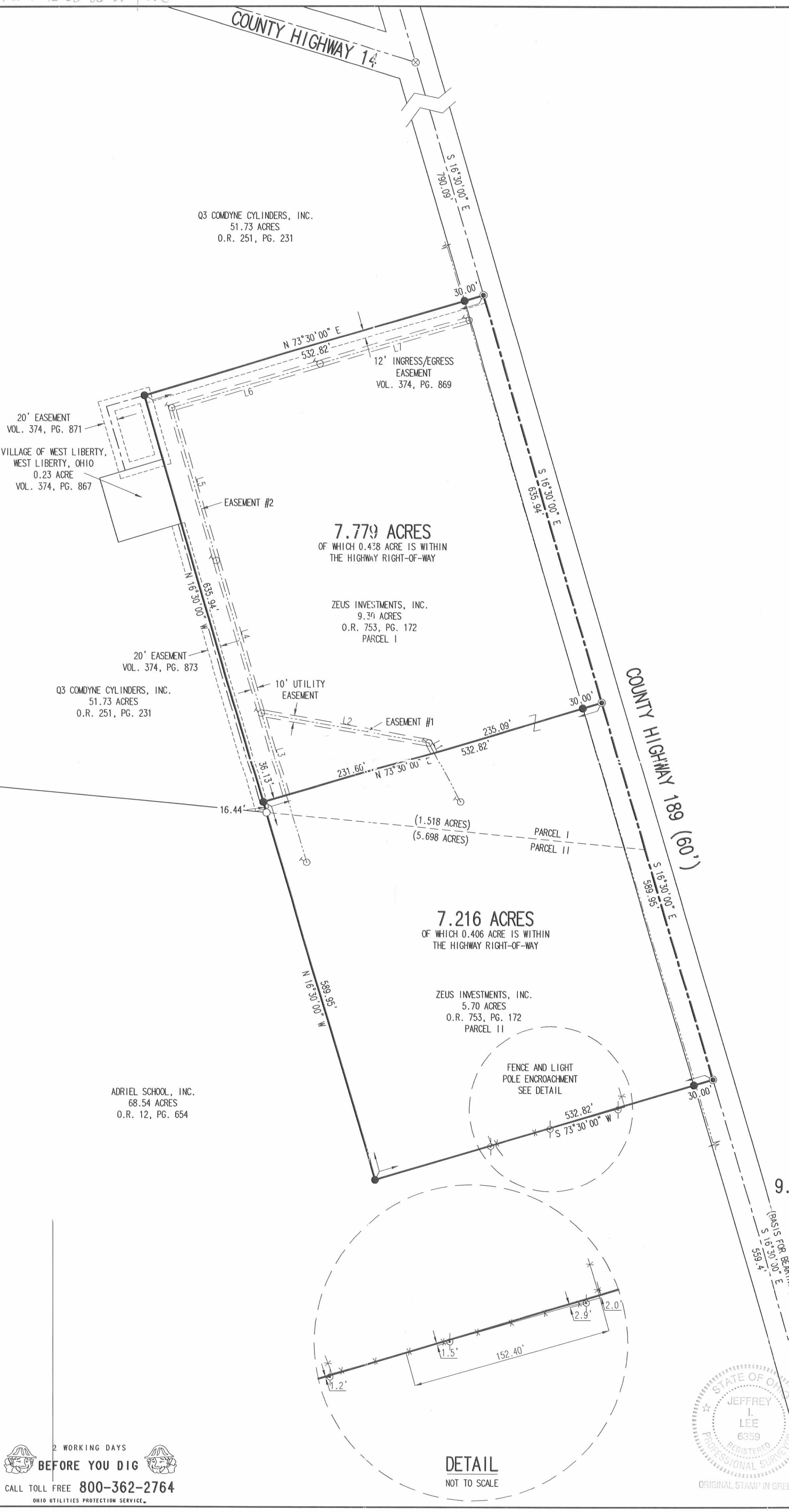
REV'D 12-28-06 SAM OUL



- LEGEND:
- ⊗ RAILROAD SPIKE FOUND
 - ⊗ PK NAIL FOUND
 - MAG NAIL SET
 - 5/8 INCH IRON ROD SET
 - 5/8 INCH IRON ROD FOUND
 - ⊕ LIGHT POLE FOUND
 - ⊕ POWER POLE FOUND

BEARINGS AND DISTANCES ALONG CENTER-LINE OF POWER LINE

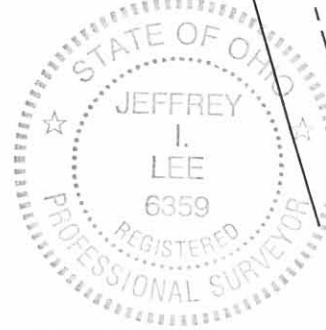
LINE	BEARING	DISTANCE
L1	N 27°38'54" W	16.88'
L2	N 80°02'24" W	255.17'
L3	N 16°32'43" W	130.26'
L4	N 16°38'16" W	237.73'
L5	N 16°38'33" W	238.17'
L6	N 73°24'50" E	232.08'
L7	N 73°38'25" E	234.02'



SURVEY OF TWO TRACTS OUT OF THE
ZEUS INVESTMENTS, INC.
9.30 ACRE TRACT AND 5.70 ACRE TRACT
OFFICIAL RECORD 753, PAGE 172
PARCEL I AND PARCEL II
SECTION 28, TOWN 5, RANGE 13
VILLAGE OF WEST LIBERTY
LIBERTY TOWNSHIP
LOGAN COUNTY, OHIO

SURVEYED BY:

JEFFREY I. LEE
PROFESSIONAL SURVEYOR 6359
DECEMBER 13, 2006
REVISED DECEMBER 21, 2006



COPYRIGHT 2006 BY:
LEE SURVEYING & MAPPING CO., INC.
117 North Madriver Street
BELLEFONTAINE, OHIO 43311
(937) 593-7335

2 WORKING DAYS
BEFORE YOU DIG
CALL TOLL FREE 800-362-2764
OHIO UTILITIES PROTECTION SERVICE.

DETAIL
NOT TO SCALE

ORIGINAL STAMP IN GREEN

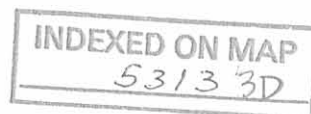
KSR D1206 0104126A L-104-2

INDEXED ON MAP
5313 14

McCord Survey
Sec. 28 T-5 R-13
West Liberty, Ohio
June 27, 1981

The following described real estate situated in the Village of West Liberty, Liberty Township, Logan County, Ohio and being part of the Southwest 1/4 of Section 28, Town 5, Range 13 of the Between the Miami Rivers Survey and more particularly described as follows: Beginning at a nail in the center of County Highway No. 189 at the southeast corner of the Columbia Building Company's 5.70 acre tract as described in Logan County deed record volume 319, page 939, said nail being Station 6+52.8 as shown on Logan County Engineers plan M-40; thence with the centerline of said C. H. 189 S.16°30'E. 250.0 feet to a nail; thence S.73°30'W. 348.5 feet to an iron bar, passing an iron bar at 30.0 feet; thence N.16°30'W. 250.0 feet to an iron bar in the south line of said Columbia Building Company's 5.70 acre tract; thence with said south line N.73°30'E. 348.5 feet to the place of beginning.

Containing 2.00 acres.



COLUMBIA BUILDING CO.
5.70 AC.

DEED VOL. 319 PG. 939



R/W MON
FOUND
P-K NAIL FOUND
STA. 11+00
P-K NAIL FOUND

S. 16° 30' E.
358.16'

6+52.8
P-K NAIL
SET

N. 73° 30' E.
348.5

C.I.T. 70.189
250.0'
P-K NAIL
SET

2.00 AC.

S. 16° 30' E.
250.0'

348.5'
S. 73° 30' W.

M'CORD SURVEY
SEC. 28 T-5 R-13
WEST LIBERTY, OHIO
JUNE 27, 1981
SCALE 1" = 100'
O = 5/8" ϕ BAR SET

INDEXED ON MAP
53/33P

DAN L. DODSON
REG. SURVEYOR 4270
BELLEFONTAINE, OHIO

Zilles Description

The following described real estate situated in the Village of West Liberty, Township of Liberty, County of Logan, State of Ohio and being a part of Section 28 and 34, Town 5, Range 13, M.R.S. and being more particularly described as follows:

Beginning at a 1" Iron Gas Pipe at the northwest corner to an 18.80 Acre tract in the name of The Mennonite Board of Missions and Charities and also being in the east line of Clara Mae Hostetler's present 148.37 Acre tract in Section 34;

Thence with Hostetler's east line, N. 6° 40' 39" E. 1,133.92 feet to a wood corner post, an interior corner to Hostetler;

Thence with Hostetler's and Edna Neer's south line, S. 86° 00' 31" E. 796.01 feet to a wood corner post in the line between Sections 34 and 28 (also being in the corporation line of West Liberty and being Neer's southeast corner) passing a corner to Hostetler at 60.82 feet;

Thence with said Section and Corporation Line, also Neer's east line, N. 6° 52' 57" E. 222.07 feet to an iron bar, southwest corner to Danny L. Lane's present 0.58 Acre tract and being an angle in said Corporation Line;

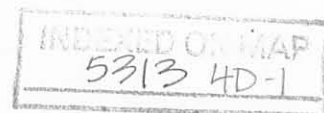
Thence with Lane's and Davisson's south line, also being the Corporation Line, S. 79° 39' 56" E. 223.21 feet to an iron bar, said iron bar being Davisson's southeast corner and an angle in said Corporation Line;

Thence with Davisson's east line and Corporation Line, N. 13° 04' 20" E. 231.82 feet to an iron pipe in the centerline of C. H. No. 14, said iron pipe being Davisson's northeast corner and an angle in said Corporation Line;

Thence with said centerline of C. H. No. 14 and Corporation Line, S. 76° 54' 32" E. 592.06 feet to a P. K. Nail at the intersection of the centerlines of C. H. No. 14 and C. H. No. 189, said nail also being an angle in the Corporation Line;

Thence with the centerline of C. H. No. 189 and Corporation Line, S. 15° 25' 50" E. 791.87 feet to a P. K. Nail, northeast corner to the Columbia Building Co.'s present 9.30 Acre tract;

Thence with the Columbia Building Co.'s north line, S. 74° 39' 46" W. 532.55 feet to an iron bar, northwest corner to said tract, passing through an iron bar at the west side of C. H. No. 189 at 30.00 feet;



(2)

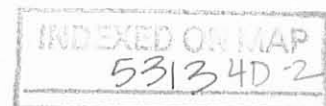
Thence with the Columbia Building Co.'s west line, S. 15° 20' 14" E. 652.38 feet to an iron bar at a corner to the Mennonite Board of Missions and Charities property;

Thence with the Mennonite's north line, N. 83° 30' 00" W. 1,681.71 feet to the place of beginning, passing through the line between Section 28 and 34, also being the Corporation Line at 891.71 feet.

The above described parcel contains a total of 51.96 Acres, of which 30.99 Acres is in Section 28, T.5, R.13 and the Corporation of West Liberty and 20.97 Acres is in Section 24, T.5, R.13 and the Township of Liberty.

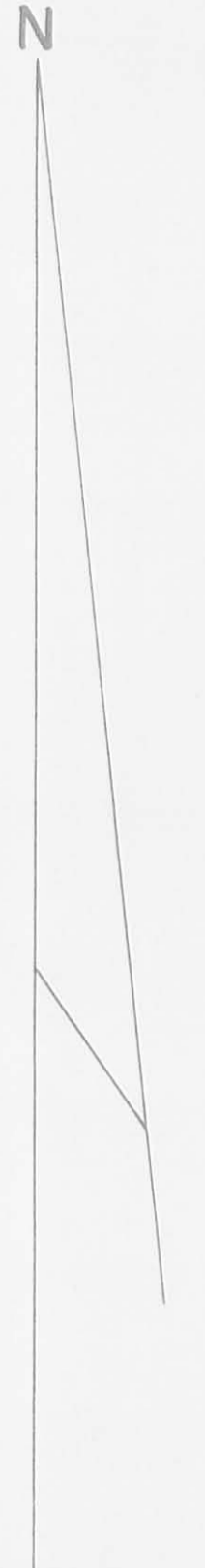
I hereby certify that the above description is true and accurate and the result of a survey completed on February 17, 1973.

Daniel E. Gilbert
Daniel E. Gilbert, P.S.
Reg. Sur. No. 5402
1041 N. Main St.
Bellefontaine, Ohio 43311



ZILLES SURVEY
 SECTIONS 28-34 TOWN 5 RANGE 13, M.R.S.
 VILLAGE OF WEST LIBERTY
 LIBERTY TOWNSHIP
 LOGAN COUNTY, OHIO
 1973
 SCALE: 1" = 100'

VERTICAL CONTROL ONLY
 365' ± NORTH OF
 POINT "3"
 ELEVATION - 1,162.80' ±



CLARA MAE HOSTETLER ETAL
 148.37 ACRES

20.97 ACRES

TOTAL - 51.96 ACRES

30.99 ACRES

COLUMBIA BUILDING CO.
 9.30 ACRES

18.80 ACRES

31.73 ACRES

EDVA NEER ET VIR
 10.74 ACRES

ADDA C. LINE
 23.75 ACRES

T.5 R.13
 DANNY L. LANE ET UX
 0.58 ACRES
 WARREN K. DAVISSON ET UX
 0.76 ACRES

FAIRVIEW CEMETERY TRUSTEES
 43.08 ACRES

THE MENNONITE BOARD OF MISSIONS AND CHARITIES

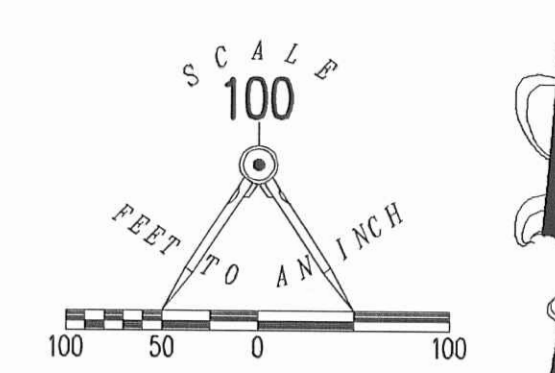
POINT	MATERIAL	CO-ORDINATES		GROUND ELEVATION
		NORTH	EAST	
A	1" PIPE	10,609.036	7,860.687	
B	STEEL POST	11,735.262	7,992.540	
C	STEEL POST	11,679.854	8,786.622	
D	IRON BAR	11,900.319	8,813.233	
E	IRON BAR	11,860.278	9,032.818	
F	1" PIPE	12,086.088	9,085.251	1,172.03
G	P.K. NAIL	11,951.987	9,661.921	1,159.51
H	P.K. NAIL	11,188.665	9,872.614	1,176.83
J	IRON BAR	11,047.806	9,359.031	1,179.01
K	IRON BAR	10,418.659	9,531.586	1,173.84

POINT	MATERIAL	RANDOM POINTS CO-ORDINATES		GROUND ELEVATION
		NORTH	EAST	
1	HUB	10,627.589	7,909.103	1,108.60
2	HUB			1,138.42
3	HUB	11,686.681	8,004.786	1,172.60
4	HUB	11,135.421	8,513.693	1,165.09
5	HUB	11,663.613	8,918.456	1,174.52
6	HUB	10,962.972	9,389.618	
7	HUB	10,425.980	9,566.035	1,185.54

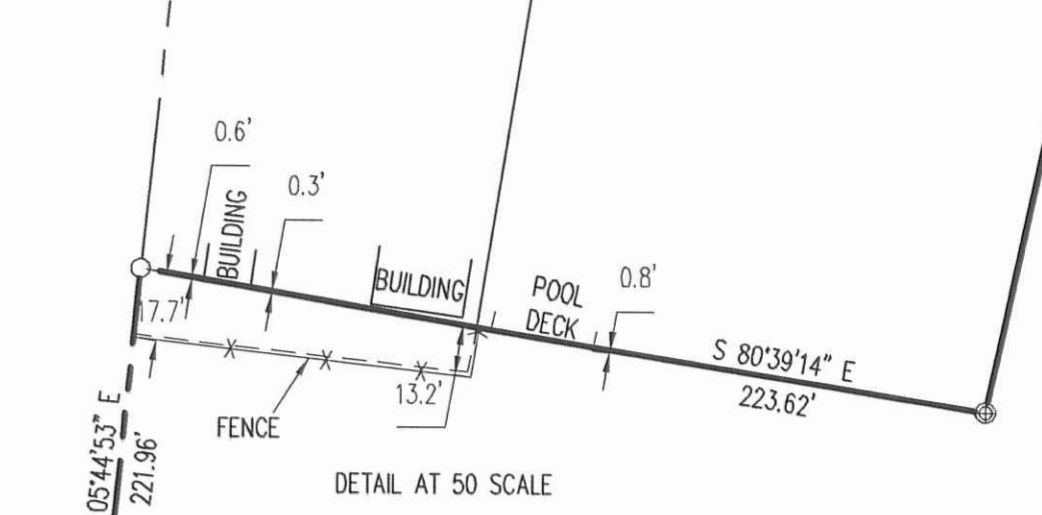
SURVEYED BY:
 LESLIE H. GEESLIN, P.S.
 REG. SUR. NO. 5248
 PLATTED BY:
 DANIEL E. GILBERT, P.S.
 REG. SUR. NO. 5402

INDEXED ON MAP
 5213 4P

ELEVATIONS
 U.S.G.S. DATUM.



- LEGEND
- 5/8 INCH IRON ROD SET WITH PLASTIC I.D. CAP STAMPED "LSM7437"
 - 5/8 INCH IRON ROD FOUND
 - ⊙ 1 INCH IRON PIPE FOUND
 - ⊕ 1/4 INCH IRON PIPE FOUND
 - ⊗ RAILROAD SPIKE FOUND
 - MAG NAIL SET
 - ⊕ STEEL POST



RETRACEMENT SURVEY OF THE
 Q3 COMDYNE CYLINDERS, INC.
 51.73 ACRE TRACT
 OFFICIAL RECORD 251, PAGE 231
 VILLAGE OF WEST LIBERTY
 SECTIONS 34 AND 28, TOWN 5, RANGE 13
 LIBERTY TOWNSHIP
 LOGAN COUNTY, OHIO

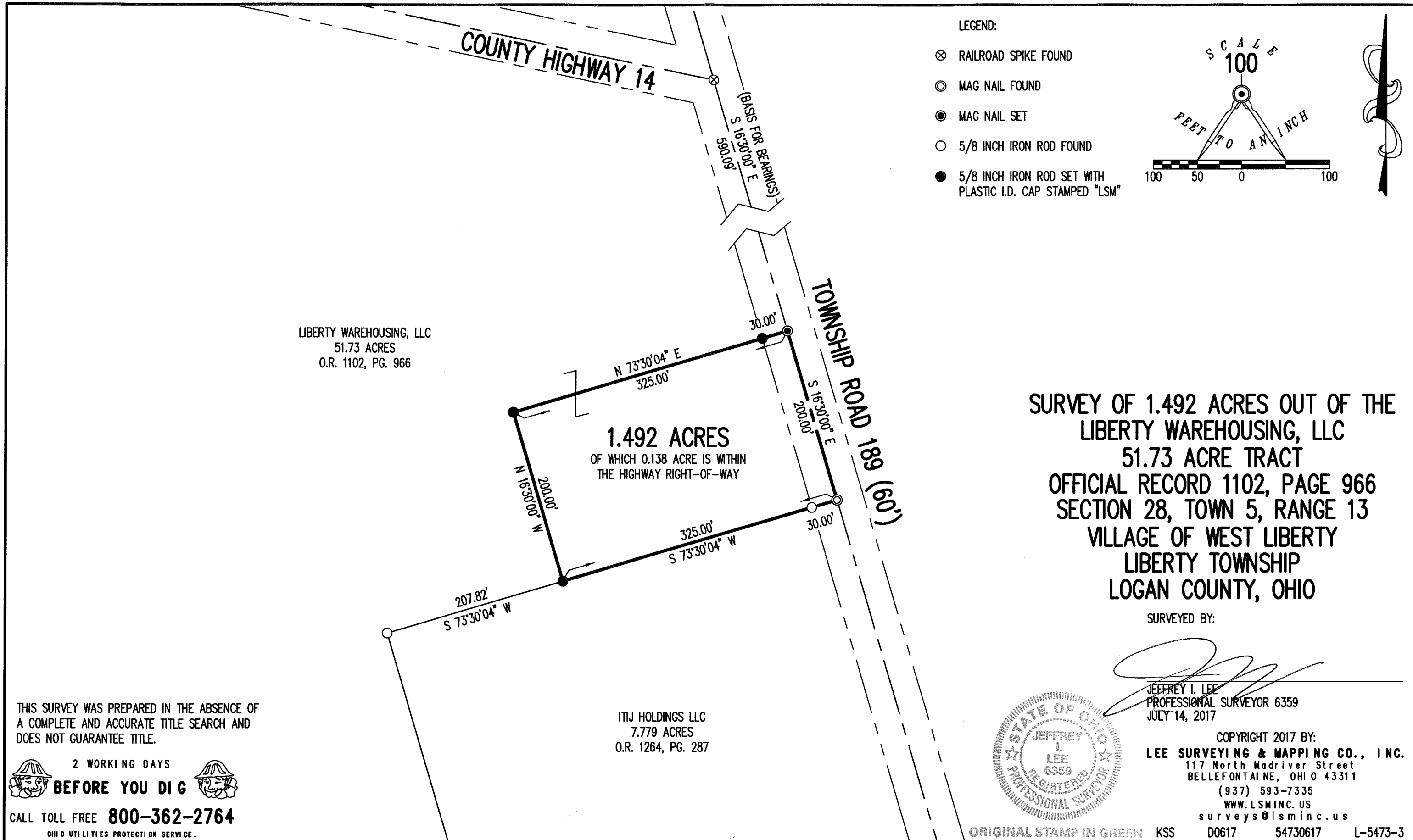
SURVEYED BY:
William K. Bruce
 WILLIAM K. BRUCE
 PROFESSIONAL SURVEYOR 7437
 JANUARY 31, 2013
 REVISED OCTOBER 7, 2013



COPYRIGHT 2013 BY:
 LEE SURVEYING & MAPPING CO., INC.
 117 North Madriver Street
 BELLEFONTAINE, OHIO 43311
 (937) 593-7335
 WWW.LSMINC.US
 surveys@lsminc.us
 ADW D0113 54730113 L-5473-1

INDEXED ON MAP
 5313 SP

2 WORKING DAYS
BEFORE YOU DIG
 CALL TOLL FREE 800-362-2764
 OHIO UTILITIES PROTECTION SERVICE

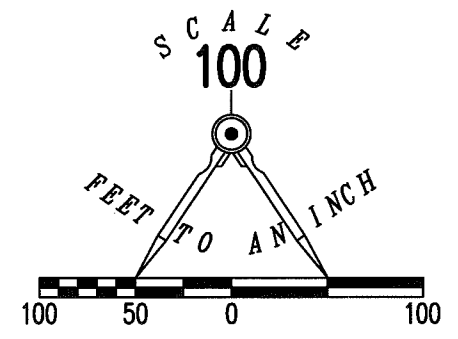


LIBERTY WAREHOUSING, LLC
51.73 ACRES
O.R. 1102, PG. 966

1.492 ACRES
OF WHICH 0.138 ACRE IS WITHIN
THE HIGHWAY RIGHT-OF-WAY

ITIJ HOLDINGS LLC
7.779 ACRES
O.R. 1264, PG. 287

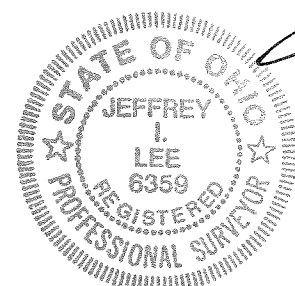
- LEGEND:
- ⊗ RAILROAD SPIKE FOUND
 - ⊙ MAG NAIL FOUND
 - MAG NAIL SET
 - 5/8 INCH IRON ROD FOUND
 - 5/8 INCH IRON ROD SET WITH PLASTIC I.D. CAP STAMPED "LSM"



**SURVEY OF 1.492 ACRES OUT OF THE
LIBERTY WAREHOUSING, LLC
51.73 ACRE TRACT
OFFICIAL RECORD 1102, PAGE 966
SECTION 28, TOWN 5, RANGE 13
VILLAGE OF WEST LIBERTY
LIBERTY TOWNSHIP
LOGAN COUNTY, OHIO**

SURVEYED BY:

Jeffrey I. Lee
JEFFREY I. LEE
PROFESSIONAL SURVEYOR 6359
JULY 14, 2017



COPYRIGHT 2017 BY:
LEE SURVEYING & MAPPING CO., INC.
117 North Madriver Street
BELLEFONTAINE, OHIO 43311
(937) 593-7335
WWW.LSMINC.US
surveys@lsminc.us

THIS SURVEY WAS PREPARED IN THE ABSENCE OF
A COMPLETE AND ACCURATE TITLE SEARCH AND
DOES NOT GUARANTEE TITLE.

2 WORKING DAYS
BEFORE YOU DIG
CALL TOLL FREE **800-362-2764**
OHIO UTILITIES PROTECTION SERVICE

ORIGINAL STAMP IN GREEN KSS D0617 54730617 L-5473-3

INDEXED ON MAP
5313 6



APPROVED 8-1-17

Lee Surveying and Mapping Co., Inc.

Land Surveys • Topography • Subdivisions • Construction Layout

117 N. Madriver St.
Bellefontaine OH 43311



Phone: (937) 593-7335
Fax: (937) 593-7444
surveys@lsminc.us

LIBERTY WAREHOUSING, LLC 1.492 ACRES

Lying in Section 28, Town 5, Range 13, Village of West Liberty, Liberty Township, Logan County, Ohio.

Being out of the Liberty Warehousing, LLC, 51.73 acre tract as deeded and described in Official Record 1102, Page 966 of the Logan County Records of Deeds and being more particularly described as follows:

Commencing on a railroad spike found on the intersection of the center-lines of County Highway 14 and Township Road 189.

THENCE, with the center-line of Township Road 189 (60 feet wide), S 16°-30'-00"E, a distance of 590.09 feet to a MAG nail set at the TRUE POINT OF BEGINNING.

THENCE, with the center-line of Township Road 189, S 16°-30'-00"E, a distance of 200.00 feet to a MAG nail found.

THENCE, with the northerly line of the ITIJ Holdings LLC, 7.779 acre tract (O.R. 1264, Pg. 287), S 73°-30'-04"W, a distance of 325.00 feet to a 5/8 inch iron rod set, passing a 5/8 inch iron rod found at 30.00 feet.

THENCE, N 16°-30'-00"W, a distance of 200.00 feet to a 5/8 inch iron rod set.

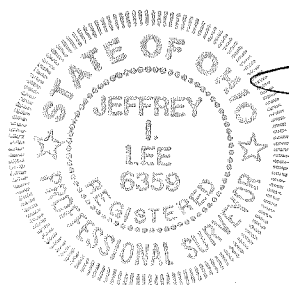
THENCE, N 73°-30'-04"E, a distance of 325.00 feet to the point of beginning, passing a 5/8 inch iron rod set at 295.00 feet.

Containing 1.492 acres, of which 0.138 acre is within the highway right-of-way.

Property is subject to any and all previous easements and rights-of-way of record.

The basis for bearings is the center-line of Township Road 189, being S 16°-30'-00"E, and all other bearings are from angles and distances measured in a field survey by Lee Surveying and Mapping Co., Inc. on July 14, 2017.

Description prepared by:



[Signature]

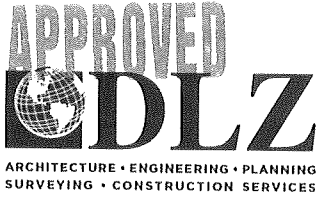
Jeffrey I. Lee
Professional Surveyor 6359
July 17, 2017

54730617

ORIGINAL STAMP IN GREEN

INDEXED ON MAP
5313 6

6-17-2020



INNOVATIVE IDEAS
EXCEPTIONAL DESIGN
UNMATCHED CLIENT SERVICE

ITIJ HOLDINGS LLC

TRACT I

Lying in Section 28, Town 5, Range 13, Between the Miami Rivers Survey, Village of West Liberty, Liberty Township, Logan County, Ohio (all records referenced herein refer to the Logan County Records of Deeds).

Being a part of the ITIJ Holdings LLC 7.779 acre tract as deeded and described in Official Record 1264, Page 287, and being more particularly described as follows:

COMMENCING at a railroad spike found at the centerline intersection of County Highway 14 and Township Road 189 (60 feet wide);

THENCE, South 15°-32'-26" East, with said centerline of Township Road 189, a distance of 790.03 feet to a MAG nail set at the common corner to the northeasterly corner of said 7.779 acre tract and the southeasterly corner of the Liberty Warehousing, LLC 1.492 acre tract as deeded and described in Official Record 1304, Page 676 and being the **TRUE POINT OF BEGINNING**;

THENCE, **South 15°-32'-26" East**, continuing with said centerline and the easterly line of said 7.779 acre tract, a distance of **163.53 feet** to a MAG nail set;

THENCE, **South 74°-28'-00" West**, with a new division line through said 7.779 acre tract, a distance of **532.78 feet** to an iron rebar set on the common line to the westerly line of said 7.779 acre tract and the easterly line of the Village of West Liberty, West Liberty, Ohio 0.23 acre tract as deeded and described in Deed Volume 374, Page 867;

THENCE, **North 15°-31'-28" West**, with said westerly line, said easterly line and an easterly line of the Liberty Warehousing, LLC 51.73 acre tract as deeded and described in Official Record 1102, Page 966, passing a 5/8 inch iron rebar found (I.D. cap stamped "PS 7437"), at a distance of 63.56 feet, a total distance of **163.53 feet** to a 5/8 inch iron rebar found (I.D. cap stamped "PS 7437") at a common corner to the

INDEXED ON MAP
5313

117 N Madriver St, Bellefontaine, OH 43311 | OFFICE 937.593.7335 | ONLINE WWW.DLZ.COM

Akron Bellefontaine Bridgeville Burns Harbor Chicago Cincinnati Cleveland Columbus Detroit Flint Fort Wayne Indianapolis Joliet
Kalamazoo Lansing Lexington Louisville Madison Melvindale Munster Muskegon Pittsburgh Port Huron Saint Joseph South Bend Toledo
Waterford



INNOVATIVE IDEAS
EXCEPTIONAL DESIGN
UNMATCHED CLIENT SERVICE

northwesterly corner of said 7.779 acre tract and an easterly corner of said 51.73 acre tract;

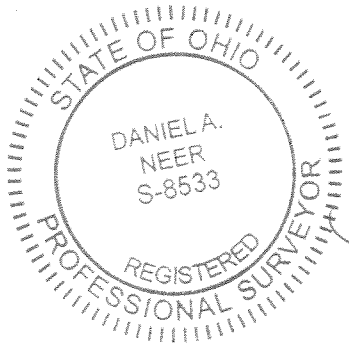
THENCE **North 74°-28'-00" East**, with the northerly line of said 7.779 acre tract and southerly lines of said 51.73 acre and 1.492 acre tracts, passing a 5/8 inch iron rebar found (I.D. cap stamped "PS 6359") at a distance of 502.76 feet, a total distance of **532.74 feet** to the **POINT OF BEGINNING**.

Containing **2.000 acres**, more or less.


Iron rods set, where indicated, are 30 inches in length, 5/8 inch in diameter with a plastic I.D. cap stamped "DLZ OHIO INC."

Property is subject to any and all previous easements and rights-of-way of record.

Bearings and distances, described herein, are derived from GPS observations based on Grid North, Ohio State Plane Coordinate System, North Zone, NAD83 (2011, Epoch 2010), with the centerline of Township Road 189, having a bearing of South 15°-32'-26 East. Distances are expressed in U.S. Survey Feet. All other measurements are from angles and distances measured in a field survey by DLZ on June 16, 2020.



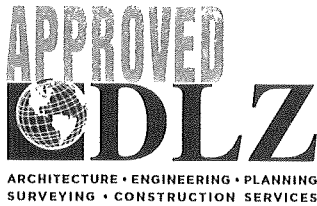
Description prepared by:


Daniel A. Neer
Professional Surveyor No. 8533
June 16, 2020

2021-2061.00

INDEXED ON MAP
5313

6-17-2020



INNOVATIVE IDEAS
EXCEPTIONAL DESIGN
UNMATCHED CLIENT SERVICE

ITIJ HOLDINGS LLC

TRACT II

Lying in Section 28, Town 5, Range 13, Between the Miami Rivers Survey, Village of West Liberty, Liberty Township, Logan County, Ohio (all records referenced herein refer to the Logan County Records of Deeds).

Being a part of the ITIJ Holdings LLC 7.779 acre tract as deeded and described in Official Record 1264, Page 287, and being more particularly described as follows:

COMMENCING at a railroad spike found at the centerline intersection of County Highway 14 and Township Road 189 (60 feet wide);

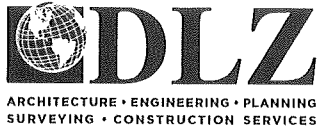
THENCE, South 15°-32'-26" East, with said centerline of Township Road 189, passing a MAG nail set at a distance of 790.03 feet at the common corner to the northeasterly corner of said 7.779 acre tract and the southeasterly corner of the Liberty Warehousing, LLC 1.492 acre tract as deeded and described in Official Record 1304, Page 676, a total distance of 953.56 feet to a MAG nail set on the easterly line of said 7.779 acre tract and being the **TRUE POINT OF BEGINNING**;

THENCE, **South 15°-32'-26" East**, continuing with said centerline and the easterly line of said 7.779 acre tract, a distance of **163.51 feet** to a MAG nail set;

THENCE, **South 74°-28'-00" West**, with a new division line through said 7.779 acre tract, passing an iron rebar set at a distance of 30.00 feet, a total distance of **532.83 feet** to an iron rebar set on the common line to the westerly line of said 7.779 acre tract and an easterly line of the Liberty Warehousing, LLC 51.73 acre tract as deeded and described in Official Record 1102, Page 966;

THENCE, **North 15°-31'-28" West**, with said westerly line, said easterly line and the easterly line of the Village of West Liberty, West Liberty, Ohio 0.23 acre tract as deeded and described in Deed Volume 374, Page 867, a distance of **163.51 feet** to a an iron rebar set;

INDEXED ON MAP
5313



INNOVATIVE IDEAS
EXCEPTIONAL DESIGN
UNMATCHED CLIENT SERVICE

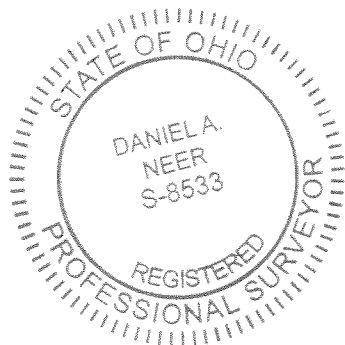
THENCE **North 74°-28'-00" East**, with a new division line through said 7.779 acre tract, passing an iron rebar set at a distance of 502.78 feet, a total distance of **532.78 feet** to the **POINT OF BEGINNING**.

Containing **2.000 acres**, more or less.

Iron rods set, where indicated, are 30 inches in length, 5/8 inch in diameter with a plastic I.D. cap stamped "DLZ OHIO INC."

Property is subject to any and all previous easements and rights-of-way of record.

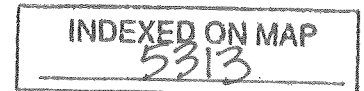
Bearings and distances, described herein, are derived from GPS observations based on Grid North, Ohio State Plane Coordinate System, North Zone, NAD83 (2011, Epoch 2010), with the centerline of Township Road 189, having a bearing of South 15°-32'-26 East. Distances are expressed in U.S. Survey Feet. All other measurements are from angles and distances measured in a field survey by DLZ on June 16, 2020.



Description prepared by:

Daniel A. Neer
Professional Surveyor No. 8533
June 16, 2020

2021-2061.00



6-17-2020



APPROVED



ARCHITECTURE • ENGINEERING • PLANNING
SURVEYING • CONSTRUCTION SERVICES

INNOVATIVE IDEAS
EXCEPTIONAL DESIGN
UNMATCHED CLIENT SERVICE

ITIJ HOLDINGS LLC 20 FEET WIDE COMMON ACCESS DRIVE EASEMENT

Lying in Section 28, Town 5, Range 13, Between the Miami Rivers Survey, Village of West Liberty, Liberty Township, Logan County, Ohio (all records referenced herein refer to the Logan County Records of Deeds).

Being a 20 feet wide common access drive easement across the ITIJ Holdings LLC 7.779 acre tract as deeded and described in Official Record 1264, Page 287, and being more particularly described as follows:

COMMENCING at a railroad spike found at the centerline intersection of County Highway 14 and Township Road 189 (60 feet wide);

THENCE, South 15°-32'-26" East, with said centerline of Township Road 189, passing a MAG nail set at a distance of 790.03 feet at the common corner to the northeasterly corner of said 7.779 acre tract and the southeasterly corner of the Liberty Warehousing, LLC 1.492 acre tract as deeded and described in Official Record 1304, Page 676, a total distance of 943.56 feet to point on the easterly line of said 7.779 acre tract and being the **TRUE POINT OF BEGINNING**;

THENCE, South 15°-32'-26" East, continuing with said centerline and the easterly line of said 7.779 acre tract, passing a MAG nail set at a distance of 10.00 feet, a total distance of **20.00 feet** to a point;

THENCE with said easement lines across said 7.779 acre tract, the following three (3) courses:

- 1) **South 74°-28'-00" West**, a distance of **130.00 feet** to a point;
- 2) **North 15°-32'-26" West**, a distance of **20.00 feet** to a point; and
- 3) **North 74°-28'-00" East**, a distance of **130.00 feet** to the **POINT OF BEGINNING**.

Containing **0.060 acre**, more or less.

Property is subject to any and all previous easements and rights-of-way of record.

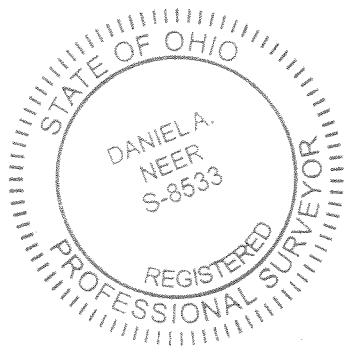
INDEXED ON MAP
5313

117 N Madriver St, Bellefontaine, OH 43311 | OFFICE 937.593.7335 | ONLINE WWW.DLZ.COM



INNOVATIVE IDEAS
EXCEPTIONAL DESIGN
UNMATCHED CLIENT SERVICE

Bearings and distances, described herein, are derived from GPS observations based on Grid North, Ohio State Plane Coordinate System, North Zone, NAD83 (2011, Epoch 2010), with the centerline of Township Road 189, having a bearing of South 15°-32'-26 East. Distances are expressed in U.S. Survey Feet. All other measurements are from angles and distances measured in a field survey by DLZ on June 16, 2020.



Description prepared by:

Daniel A. Neer
Professional Surveyor No. 8533
June 16, 2020

2021-2061.00

INDEXED ON MAP
5313

6-17-2020



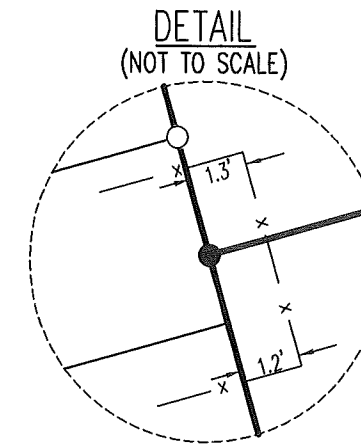
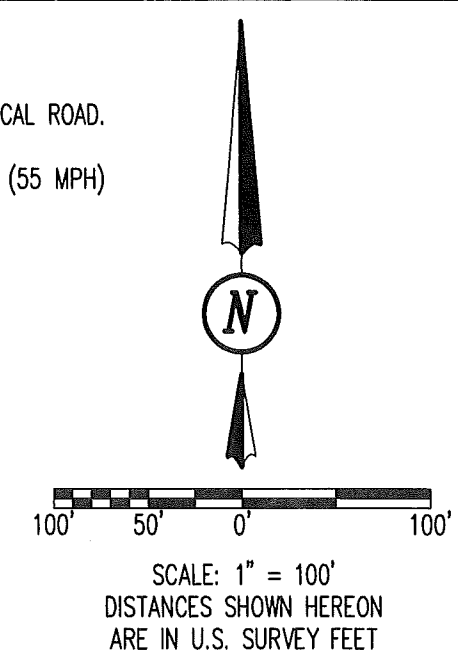
DEED & SURVEY REFERENCES:

LOGAN COUNTY ENGINEER'S MAP ROOM FILES
5313

D.V. 374, PG. 867
O.R. 1102, PG. 966
O.R. 1264, PG. 287
O.R. 1304, PG. 676

ACCESS MANAGEMENT NOTE:

TOWNSHIP ROAD 189 IS CLASSIFIED AS A LOCAL ROAD.
MINIMUM DRIVE SPACING IS 250'
MINIMUM STOPPING SIGHT DISTANCE IS >495 (55 MPH)



LINE	BEARING	DISTANCE
L1	S 15°32'26" E	20.00'
L2	S 74°28'00" W	130.00'
L3	N 15°32'26" W	20.00'
L4	N 74°28'00" E	130.00'

SURVEY NOTE:

- A (I.D. CAP STAMPED "PS 6359")
- B (I.D. CAP STAMPED "PS7437")

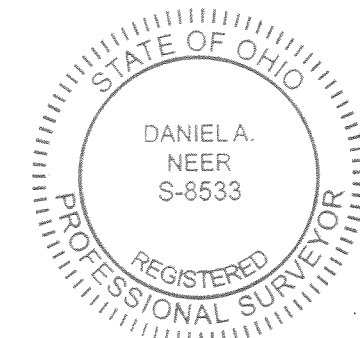
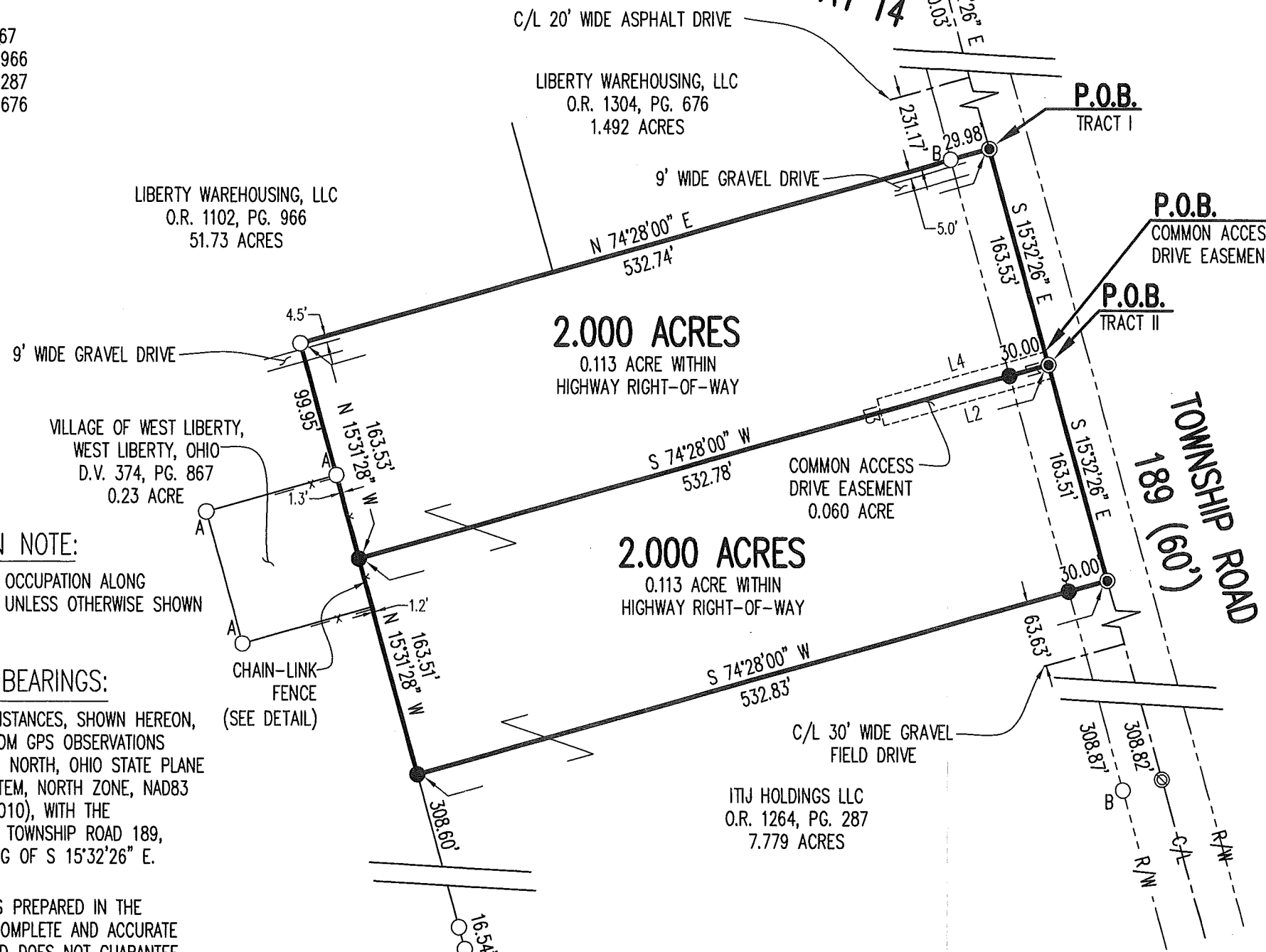
OCCUPATION NOTE:

NO EVIDENCE OF OCCUPATION ALONG
BOUNDARY LINES UNLESS OTHERWISE SHOWN

BASIS FOR BEARINGS:

BEARINGS AND DISTANCES, SHOWN HEREON,
ARE DERIVED FROM GPS OBSERVATIONS
BASED ON GRID NORTH, OHIO STATE PLANE
COORDINATE SYSTEM, NORTH ZONE, NAD83
(2011, EPOCH 2010), WITH THE
CENTER-LINE OF TOWNSHIP ROAD 189,
HAVING A BEARING OF S 15°32'26" E.

THIS SURVEY WAS PREPARED IN THE
ABSENCE OF A COMPLETE AND ACCURATE
TITLE SEARCH AND DOES NOT GUARANTEE
TITLE.



Daniel A. Neer
DANIEL A. NEER
PROFESSIONAL SURVEYOR NO. 8533
JUNE 16, 2020

COPYRIGHT 2020 BY:

117 N. Madriver Street • Bellefontaine, OH 43311
(937) 593-7335 • www.dlz.com
Project #2021-0000.00

LEGEND	
● MAG NAIL SET	⊗ RAILROAD SPIKE FOUND
○ 5/8 INCH IRON REBAR FOUND	
● 5/8 INCH x 30 INCH IRON REBAR SET (WITH I.D. CAP STAMPED "DLZ OHIO INC.")	
◎ MAG NAIL FOUND	
R/W = RIGHT-OF-WAY	P.O.C = POINT OF COMMENCEMENT
C/L = CENTERLINE	P.O.B. = POINT OF BEGINNING
O.R. = OFFICIAL RECORD	PG. = PAGE D.V. = DEED VOLUME

PLAT OF SURVEY
SECTION 28, TOWN 5, RANGE 13
BETWEEN THE MIAMI RIVERS SURVEY
VILLAGE OF WEST LIBERTY,
LIBERTY TOWNSHIP
LOGAN COUNTY, OHIO

DRAWN BY:	DESCRIPTION	REV. NO.	DATE
DAN			6/16/20

INDEXED ON MAP
5313