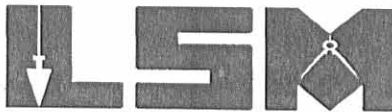


REC'D 4-29-05 SWM RL

Lee Surveying and Mapping Co., Inc.

Land Surveys • Topography • Subdivisions • Construction Layout

117 N. Madriver St.
Bellefontaine OH 43311



Phone: (937) 593-7335
Fax: (937) 593-7444

1975-2005 - 30 YEARS OF EXCELLENCE

**PETERS
13.662 ACRES**

Lying in Section 25, Town 4, Range 14, Liberty Township, Logan County, Ohio.

Being all of the Benjamin J. Peters and Jill Anne Peters 13.68 acre tract as deeded and described in Official Record 89, Page 326 of the Logan County Records of Deeds and being more particularly described as follows:

Beginning at a 1 inch iron pipe found at the northeast corner of Section 25, on the west line of Virginia Military Survey 5864, on the east line of Liberty Township and on the center-line of County Highway 1 (Ludlow Road).

THENCE, with the north line of Section 25, N 87°-13'-46"W, a distance of 1634.00 feet to a 5/8 inch iron rod found at the TRUE POINT OF BEGINNING.

THENCE, with the west line of the Ronald D. Haas 6.14 acre tract (O.R. 252, Pg. 483), S 3°-59'-03"W, a distance of 886.39 feet to a 5/8 inch iron rod set.

THENCE, with the lines of the Gerald W. Ropp 2.28 acre tract (O.R. 42, Pg. 730), the following two courses:

N 87°-17'-17"W, a distance of 225.23 feet to a 5/8 inch iron rod found.

S 2°-47'-53"W, a distance of 449.53 feet to a railroad spike found on the center-line of Township Road 199, passing a 5/8 inch iron rod set at 419.53 feet.

THENCE, with the center-line of Township Road 199 (60 feet wide), N 87°-00'-00"W, a distance of 295.60 feet to a railroad spike found.

THENCE, with the east line of the Benjamin J. Peters and Jill K. Peters 6.496 acre tract (O.R. 233, Pg. 203), N 3°-16'-20"E, a distance of 1334.82 feet to a 5/8 inch iron rod set, passing a 5/8 inch iron rod set at 30.00 feet.

THENCE, with the north line of Section 25 and the south line of the Don K. Miller 65.32 acre tract (Vol. 386, Pg. 111), S 87°-13'-46"E, a distance of 528.13 feet to the point of beginning.

Containing 13.662 acres, of which 0.204 acre is within the highway right-of-way.

The basis for bearings is the center-line of Township Road 199, being S 87°-00'-00"E, and all other bearings are from angles and distances measured in a field survey by Lee Surveying and Mapping Co., Inc. on April 28, 2005.

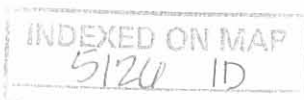


Description prepared by:

Jeffrey I. Lee
Professional Surveyor 6359
April 29, 2005

ORIGINAL STAMP IN GREEN

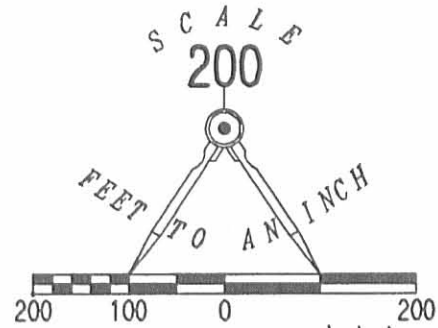
L-4018



2005 4-29-05 8W.1 OK

LEGEND:

- ⊙ 1 INCH IRON PIPE FOUND
- ⊗ RAILROAD SPIKE FOUND
- 5/8 INCH IRON ROD FOUND
- 5/8 INCH IRON ROD SET



DON K. MILLER
65.32 ACRES
VOL. 386, PG. 111

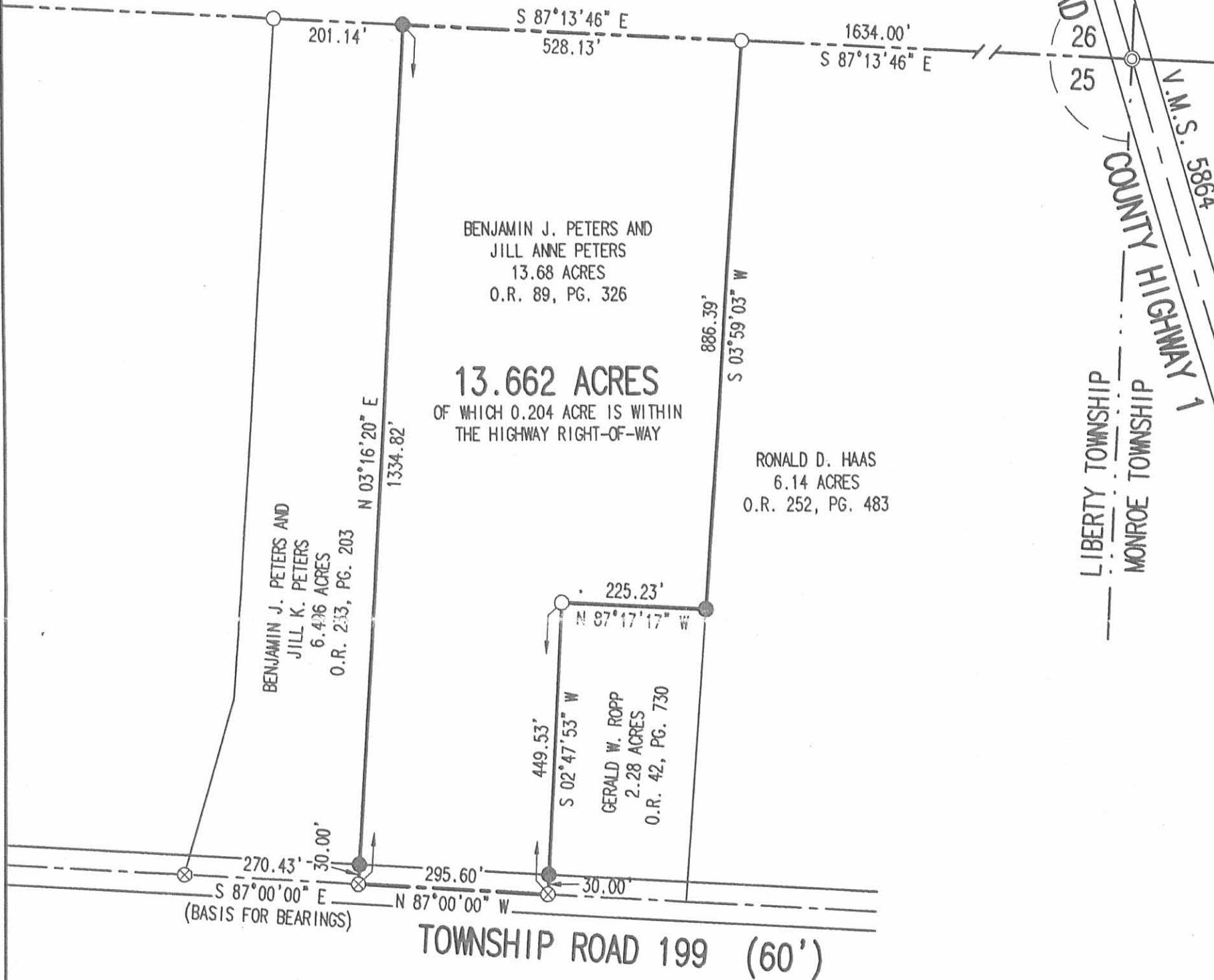
BENJAMIN J. PETERS AND
JILL ANNE PETERS
13.68 ACRES
O.R. 89, PG. 326

13.662 ACRES
OF WHICH 0.204 ACRE IS WITHIN
THE HIGHWAY RIGHT-OF-WAY

RONALD D. HAAS
6.14 ACRES
O.R. 252, PG. 483

BENJAMIN J. PETERS AND
JILL K. PETERS
6.476 ACRES
O.R. 233, PG. 203

GERALD W. ROPP
2.28 ACRES
O.R. 42, PG. 730



RETRACEMENT SURVEY OF THE
BENJAMIN J. PETERS AND
JILL ANNE PETERS
13.68 ACRE TRACT
OFFICIAL RECORD 89, PAGE 326
SECTION 25, TOWN 4, RANGE 14
LIBERTY TOWNSHIP
LOGAN COUNTY, OHIO

SURVEYED BY:



Jeffrey I. Lee
JEFFREY I. LEE
PROFESSIONAL SURVEYOR 6359
APRIL 28, 2005

COPYRIGHT 2005 BY:
LEE SURVEYING & MAPPING CO., INC.
117 North Madriver Street
BELLEFONTAINE, OHIO 43311
(937) 593-7335

INDEXED ON MAP
5126 IP



CALL TOLL FREE 800-362-2764
OHIO UTILITIES PROTECTION SERVICE.

ORIGINAL STAMP IN GREEN

December 30, 1972

The following described real estate situated in the Township of Liberty, County of Logan, State of Ohio and being a part of Section 25 Town 4 Range 14 and being more particularly described as follows:

Beginning at a R. R. Spike in the centerline of T. R. No. 199 at the southwest corner to Milton L. Hass's present 6.14 Acre tract and the southeast corner to John V. McGarry Jr's present 15.96 Acre tract;

Thence with the line between Hass and McGarry, N. $4^{\circ} 08.75'$ E. 450.09 feet to an iron bar in a fence, passing through an iron bar at 15.0 feet;

Thence N. $87^{\circ} 00'$ W. 225.00 feet to an iron bar;

Thence S. $3^{\circ} 00'$ W. 450.00 feet to a R. R. Spike in the centerline of T. R. No. 199, passing through an iron bar at 435.00 feet;

Thence with the centerline of T. R. No. 199, S. $87^{\circ} 00'$ E. 216.00 feet to the place of beginning, containing 2.28 Acres, more or less.

The above described tract being surveyed out of the southeast corner of John V. McGarry Jr's present 15.96 Acre tract.

I hereby certify that this is a true and accurate description of a survey made by me on December 30, 1972.

Daniel E. Gilbert
Daniel E. Gilbert, P.S.
Reg. Sur. No. 5402
1041 N. Main St.
Bellefontaine, Ohio 43311

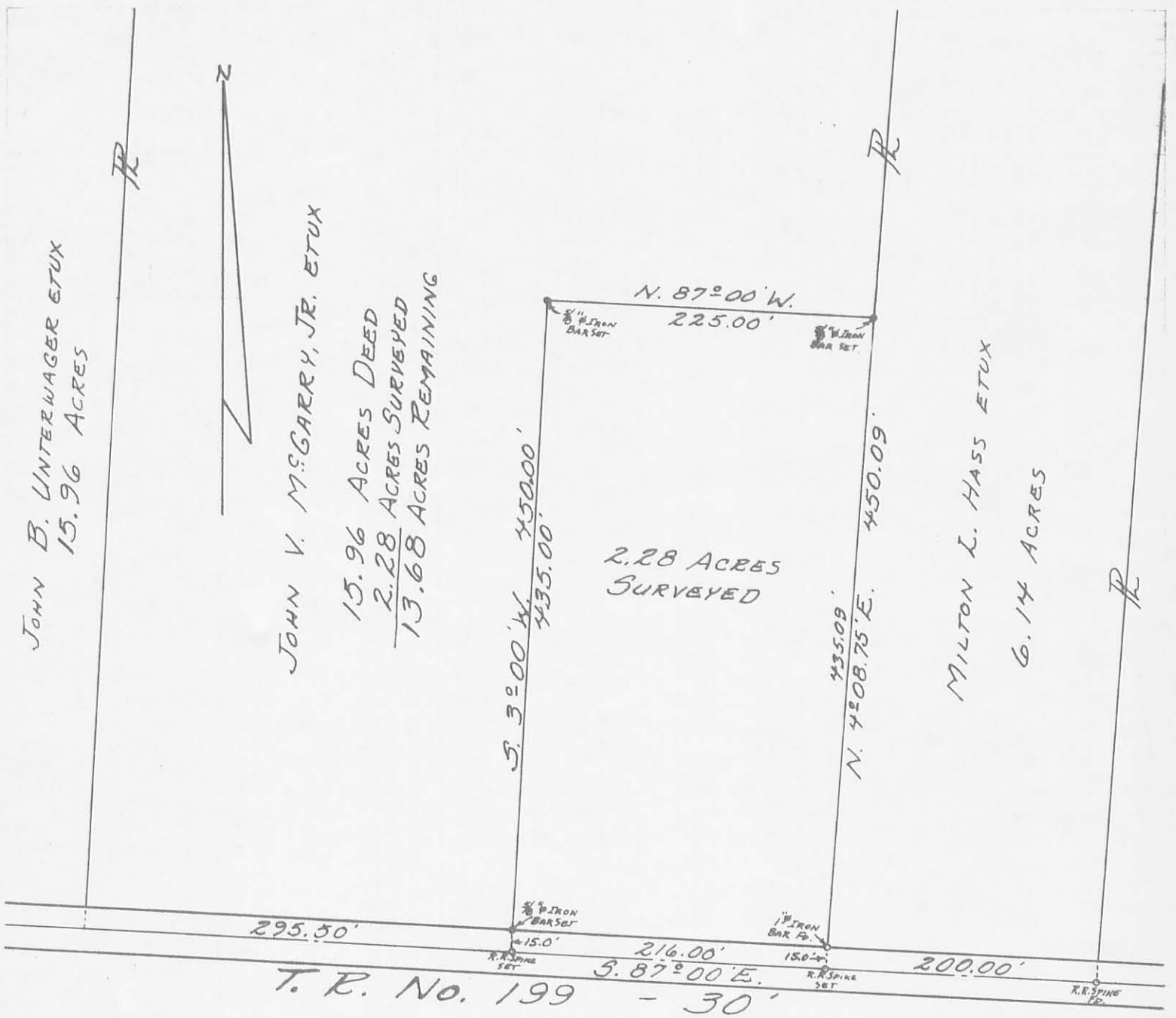
5126 2D

JOHN B. UNTERWAGER ETUX
15.96 ACRES

JOHN V. MCGARRY, JR. ETUX
15.96 ACRES DEED
2.28 ACRES SURVEYED
13.68 ACRES REMAINING

MILTON L. HASS ETUX
6.14 ACRES

2.28 ACRES
SURVEYED



MCGARRY SURVEY
SECTION 25 T. 4 R. 14
LIBERTY TOWNSHIP
LOGAN COUNTY, OHIO
DECEMBER 30, 1972

SURVEYED AND PLATTED BY:
DANIEL E. GILBERT, P.S.
REG. SUR. NO. 5402
1041 N. MAIN ST.
BELLEFONTAINE, OHIO 43311

5126 2P

SCALE: 1" = 100'

INDEXED ON MAP

REC'D 2-24-12 SMM/OK

Lee Surveying and Mapping Co., Inc.

Land Surveys • Topography • Subdivisions • Construction Layout

117 N. Madriver St.
Bellefontaine OH 43311



Phone: (937) 593-7335
Fax: (937) 593-7444
surveys@lsminc.us

ROPP 6.437 ACRES

Lying in Section 25, Town 4, Range 14, Liberty Township, Logan County, Ohio.

Being out of the Gerald W. Ropp and the Teresa L. Ropp 13.662 acre tract as deeded and described in Official Record 777, Page 577 of the Logan County Records of Deeds and being more particularly described as follows:

Commencing at a 1 inch iron pipe found at the northeast corner of Section 25 at the intersection of the east line of Liberty Township and the center-line of County Highway 1 (60 feet wide).

THENCE, with the north line of Section 25, N 87°-13'-46"W, a distance of 1953.04 feet to a point at the TRUE POINT OF BEGINNING.

THENCE, S 03°-16'-20"W, a distance of 1335.65 feet to a MAG nail set, passing a 5/8 inch iron rods set at 5.00 feet and 1305.65 feet.

THENCE, with the center-line of Township Road 199 (60 feet wide), N 87°-00'-00"W, a distance of 210.00 feet to a railroad spike found.

THENCE, with the east line of the Marla D. Stephens 6.496 acre tract, (O.R. 787, Pg. 363), N 03°-16'-20"E, a distance of 1334.82 feet to a 5/8 inch iron rod found, passing a 5/8 inch iron rod found at 30.00 feet.

THENCE, with the south line of the Don K. Miller 65.32 acre tract (Vol. 386, Pg. 111) and the north line of Section 25, S 87°-13'-46"E, a distance of 210.00 feet to the point of beginning, passing a 5/8 inch iron rod set at 205.00 feet.

Containing 6.437 acre tract of which 0.145 acre is within the highway right-of-way.

Property is subject to any and all previous easements and rights-of-way of record.

The basis for bearings is the center-line of Township Road 199, being N 87°-00'-00"W, and all other bearings are from angles and distances measured in a field survey by Lee Surveying and Mapping Co., Inc. on February 22, 2012.



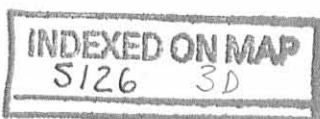
ORIGINAL STAMP IN GREEN

Description prepared by:

A handwritten signature in black ink that reads 'William K. Bruce'.

William K. Bruce
Professional Surveyor 7437
February 23, 2012

L-4018



REC'D 2-24-12 SURV OR

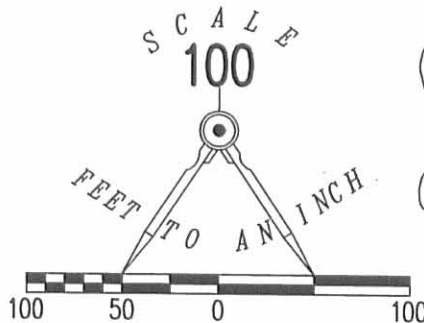
DON K. MILLER
65.32 ACRE TRACT
VOL. 386, PG. 111

SEE DETAIL

V.M.S. 5864
COUNTY HIGHWAY 1 (60')
LIBERTY TOWNSHIP
MONROE TOWNSHIP

MARLA D. STEPHENS
6.496 ACRE TRACT
O.R. 787, PG. 363

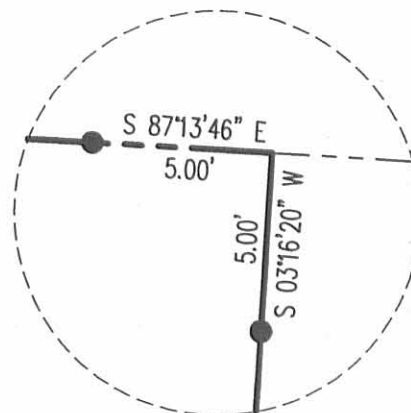
6.437 ACRES
OF WHICH 0.145 ACRES ARE WITHIN
THE HIGHWAY RIGHT-OF-WAY.



LEGEND

- 5/8 INCH IRON ROD SET WITH PLASTIC I.D. CAP STAMPED "LSM 7437"
- 5/8 INCH IRON ROD FOUND
- ⊗ RAILROAD SPIKE FOUND
- MAG NAIL SET
- ⊙ 1 INCH IRON PIPE FOUND

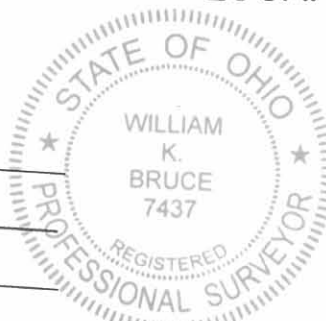
GERALD W. ROPP AND TERESA L. ROPP
13.662 ACRE TRACT
O.R. 777, PG. 577



DETAIL NOT TO SCALE

**SURVEY OF A 6.437 ACRE TRACT OUT OF THE
GERALD W. ROPP AND TERESA L. ROPP
13.662 ACRE TRACT
OFFICIAL RECORD 777, PAGE 577
SECTION 25, TOWN 4, RANGE 14
LIBERTY TOWNSHIP
LOGAN COUNTY, OHIO**

SURVEYED BY:



William K. Bruce
WILLIAM K. BRUCE
PROFESSIONAL SURVEYOR 7437
FEBRUARY 22, 2012

COPYRIGHT 2012 BY:
LEE SURVEYING & MAPPING CO., INC.
117 North Madriver Street
BELLEFONTAINE, OHIO 43311
(937) 593-7335
WWW.LSMINC.US
surveys@lsminc.us

30.00' 210.00' 30.00'
N 87°00'00" W
BASIS FOR BEARINGS
TOWNSHIP ROAD 199 (60')

2 WORKING DAYS



CALL TOLL FREE **800-362-2764**

OHIO UTILITIES PROTECTION SERVICE

INDEXED ON MAP
S126 3P

ORIGINAL STAMP IN GREEN

ADW D0212 40180212 L-4018-3