

Lee Surveying and Mapping Co., Inc.

Land Surveys • Topography • Subdivisions • Construction Layout

117 N. Madriver St.
Bellefontaine OH 43311



Phone: (937) 593-7335
Fax: (937) 593-7444

EARICK 0.304 ACRES

Lying in Section 25, Town 4, Range 14, Liberty Township, Logan County, Ohio.

Being 0.304 acre out of the Steven E. Earick original 42.826 acre tract as deeded and described in Volume 402, Page 876 of the Logan County Records of Deeds and being more particularly described as follows:

Beginning at a stone in monument box found at the southwest corner of Section 25, on the center-line of County Highway 190 (50 feet wide).

THENCE, with the center-line of County Highway 190, S 85°-55'-00" E, a distance of 269.78 feet to a railroad spike found at the southwest property corner of the Charles R. Earick 3.419 acre tract (Vol. 370, Pg. 83).

THENCE, with the west line of the said 3.419 acre tract, N 4°-06'-44" E, a distance of 711.81 feet to a 5/8 inch iron rod found at the TRUE POINT OF BEGINNING.

THENCE, N 4°-06'-44" E, a distance of 63.52 feet to a 5/8 inch iron rod set.

THENCE, S 86°-56'-50" E, a distance of 208.34 feet to a 5/8 inch iron rod set.

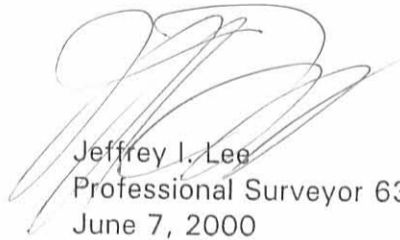
THENCE, S 4°-05'-15" W, a distance of 63.52 feet to a 5/8 inch iron rod found.

THENCE, with the north line of the said 3.419 acre tract, N 86°-56'-50" W, a distance of 208.37 feet to the point of beginning.

Containing 0.304 acre.

The basis for bearings is the center-line of County Highway 190 being S 85°-55'-00" E, and all other bearings are from angles and distances measured in a field survey by Lee Surveying and Mapping Co., Inc. on May 24, 2000.

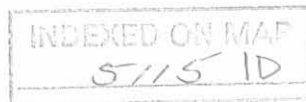
Description prepared by:


Jeffrey I. Lee
Professional Surveyor 6359
June 7, 2000



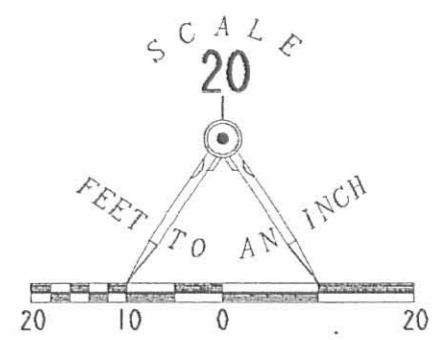
ORIGINAL STAMP IN GREEN

L-224



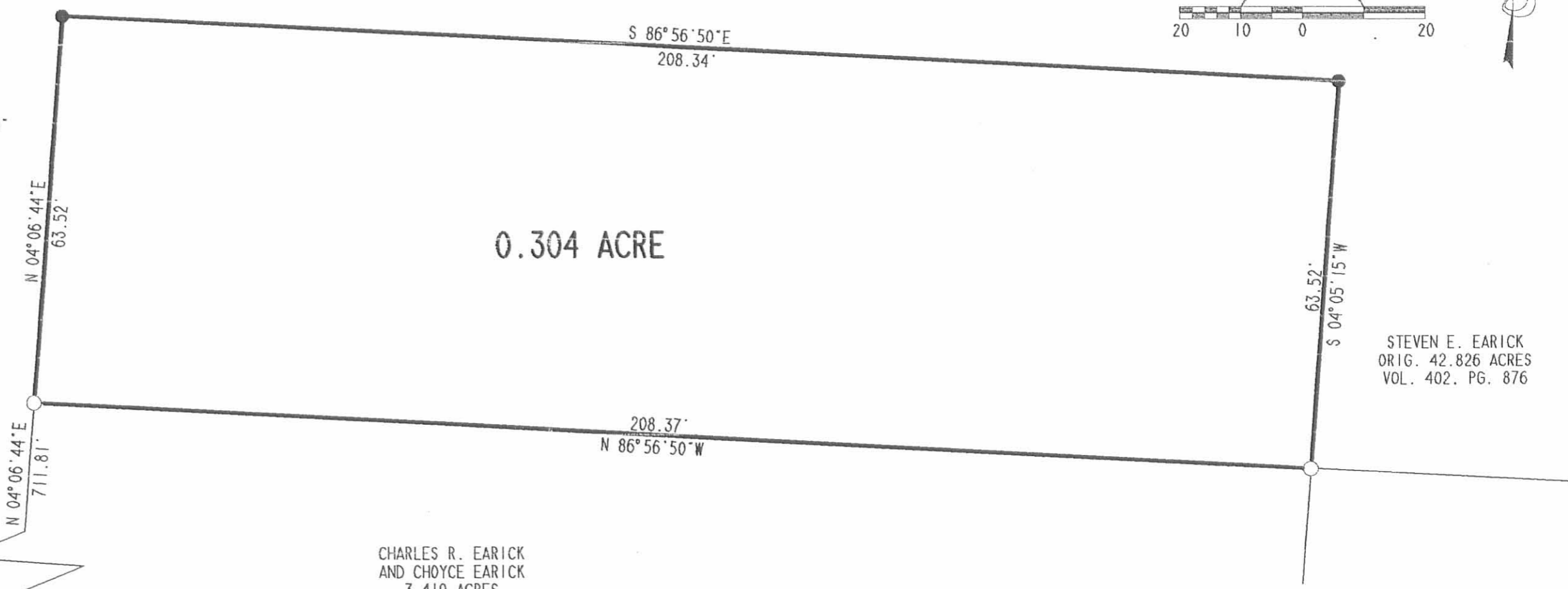
REC'D 6-19-00 smg

STEVEN E. EARICK
ORIG. 42.826 ACRES
VOL. 402. PG. 876



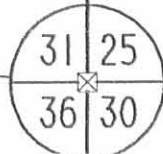
LEGEND

- 5/8 INCH IRON ROD SET WITH PLASTIC ID CAP STAMPED "LEE PS6359"
- 5/8 INCH IRON ROD FOUND
- ⊗ RAILROAD SPIKE FOUND
- ⊠ STONE IN MONUMENT BOX FOUND



CHARLES R. EARICK
AND CHOYCE EARICK
3.419 ACRES
VOL. 370. PG. 83

STEVEN E. EARICK
ORIG. 42.826 ACRES
VOL. 402. PG. 876



S 85° 55' 00" E
269.78'

COUNTY HIGHWAY 190 (50' R\W)

**SURVEY OF 0.304 ACRE OUT OF THE
STEVEN E. EARICK
ORIGINAL 42.826 ACRE TRACT
VOLUME 402. PAGE 876
SECTION 25, TOWN 4, RANGE 14
LIBERTY TOWNSHIP
LOGAN COUNTY, OHIO**



SURVEYED BY:
[Signature]
JEFFREY I. LEE
PROFESSIONAL SURVEYOR 6359
MAY 24, 2000

COPYRIGHT 2000 BY:
LEE SURVEYING & MAPPING CO., INC.
117 North Madriver Street
BELLEFONTAINE, OHIO 43311
(937) 593-7335

2 WORKING DAYS
BEFORE YOU DIG
CALL TOLL FREE **800-362-2764**
OHIO UTILITIES PROTECTION SERVICE.

RELEASED ON MAP
5/15/1P

Lee Surveying and Mapping Co.



Farm Surveys • Lot Surveys • Descriptions • Subdivisions

855 EAST SANDUSKY AVENUE
BELLEFONTAINE, OHIO 43311

CLAYTON M. LEE, P. S.
(513) 593-5780

STEVE AND VICKI EARICK TO
CHARLES AND CHOYCE EARICK

Lying in Section 25, T-4, R-14, Liberty Township, Logan County, Ohio and being out of that tract of land deeded and described in Volume 364, Page 394 of the Logan County Records of Deeds and more particularly described as follows:

Beginning at an iron rod over a stone at the southwest corner of said Section 25. Said section corner lying in the center-line of County Road No. 190 and lying east of the center-line of U.S. Route No. 68 a distance of 141.0 feet.

THENCE, with the center-line of said C.R. 190, S 85°-55' E, a distance of 265.7 feet to a railroad spike set for the true point of beginning.

THENCE, continuing with the center-line of S.R. 190, S 85°-55' E, a distance of 208.71 feet to a railroad spike.

THENCE, N 4°-02' E, a distance of 715.33 feet to an iron rod.

THENCE, N 86°-53' W, a distance of 208.71 feet to an iron rod.

THENCE, S 4°-02' W, a distance of 711.81 feet to the point of beginning. Containing 3.419 acres.

Last previous deed reference: Volume 364, Page 394.

Surveyed by

Clayton M. Lee
Clayton M. Lee
Reg. Surveyor No. 6181
2-1-77

5115 2D

INDEXED ON MAP



NORTH



STEVEN & VICKI EARICK
VOL. 364, PG. 394

SCALE 1"=100'

I.R. N 86°-53'W 208.71' I.R.

S 4°-02'W 711.81'

3,419 ACRES

N 4°-02'E 715.33'

U.S. ROUTE NO. 68

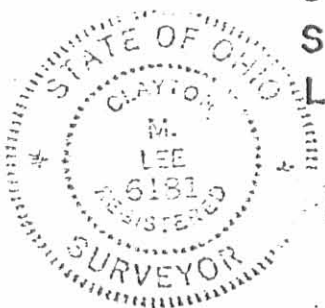
HAYES
2.33 AC.
Vol. 233, Pg. 431

141' 31 25 214.4' 51.3' S 85°-55'E 208.71' RR. Spike RR. Spike

SECTION COR.

CO. RD. NO. 190

SURVEY OF 3.419 ACRES OUT OF THE
STEVEN E. & VICKI P. EARICK LAND (VOL. 364, PG. 394)
SECTION 25, T-4, R-14
LIBERTY TWP., LOGAN CO., OHIO



Lee Surveying & Mapping Co.
855 E. Sandusky Ave.
BELLEFONTAINE, OHIO 43311
(513) 593-5780

SURVEYED BY:

Clayton M. Lee
Clayton M. Lee
Reg. Surveyor 6181

2P

5115

2-1-77

INDEXED ON MAP