

INDEX

"

"

"

"

J.C.H. 189 Sec. D

Time

" " " "

" " " "

" " " "

" " " "

" " " "

" " " "

" " " "

" " " "

" " " "

" " " "

" " " "

" " " "

" " " "

Surrey

1

1

2

3

4

5

6

7

8

9

10

11

12

13

14

15

16

17

18

19

INDEX

I.C.H.	189	Sec. D	Survey.	20
"	"	"	"	21
"	"	"	"	22
"	"	"	"	23
"	"	"	"	24
"	"	"	"	25
"	"	"	"	26
"	"	"	"	27
"	"	"	"	28
"	"	"	"	29
"	"	"	"	30
"	"	"	"	31
"	"	"	"	32
I.C.H.	189	Sec. A	Survey	33
"	"	"	"	34
"	"	"	"	35
"	"	"	"	36
"	"	"	"	37
"	"	"	"	38

INDEX

I.C.H. 189	sec. A.	Surrey	39
"	"	"	40
"	"	"	41
"	"	"	42
"	"	"	43
"	"	"	44
"	"	"	45
"	"	"	46
"	"	"	47
"	"	"	48
"	"	"	49
"	"	"	50
"	"	"	51
"	"	Time	52
"	"	"	53
"	"	"	54
"	"	"	55
"	"	"	56
"	"	"	57

INDEX

I.C.H. 189 Concrete at RR.	58
	59
	60
	61
	62
	63
	64
	65
	66
	67
	68
	69
	70
	71
	72
	73
	74
	75
	76

F.C.N. 189 *Monuments*

77

78

79

80

81

82

F.F. Wright

John McKinstry

Ross Antrim

Ivan Wickersham

James C. Crane

Lenny M. Espinosa

Lunch

Paid By

Stakes

1929

Sat	Nov 9	1/2	1/2		
Mon	Nov 11	1/2	1/2		
Tue	" 12	1	1	1	1
Fri	" 15	1	1	1	1
Sat	" 16			1	1
Wed	Dec. 4	1	1	1	1
Thur	" 5	1	1	1	1
Fri	" 6	1	1	1	1
Sat	" 7			1	1
Mon	" 9	1	1	1	1
Tue	" 10	1	1	1	1
Wed	" 11	1	1		
Thur	" 12	1	1	1	1
Fri	" 13	1	1/2	1/2	1/2
Thur	" 19	1			
Sat	" 21				1

Sec. D

"

"

"

"

"

"

"

Sec. A.

"

Sec A 1/2

Sec D 1/2

Sec. A

Sec. D

18 Miles

.80
~~1.00~~

.40

.90

.90

1.00

.80

.35

1.00

.90

5
1.00

1.00

5
7.05

500
Logan Co. Co.
4.15.00

300
Logan Co. Co.
9.00

5
24.00

Survey

" Survey

" Survey

" Monument

" Survey

" Survey

" Survey

" Monument

" Survey

" Survey

" Survey

" Survey

" Survey

office

office

10. H. 189

Sec. D.
Sec. A.

1929

F.F.W. only
John M Skirrah
Ross H. ...
Iron Wickerham
James C. Cray
Ray, C. S. Hayes

Mon. Dec. 23 | | | | 1/2
Tue. " 24 | | | |
Sat. " 28 | | | |
Mon. " 30 | | | |

Sec. D office
Sec. D office
Sec. A Field
Sec. D .90 F.F.W. Field

Lunch

Paid By

Lion Skirrah
John M Skirrah

1930

Wed. Jan. 8 | | | |
Wed. " 15 | | | |
Thur. " 16 | | | |
Fri. " 17 | | | |
Sat. " 18 | | | |
Mon. " 20 | | | |
Fri. " 24 | | | |
Sat. " 25 | | | |
Wed. Feb. 12 | | 1/2 1/2 |

Sec. D 16 Miles Field
Sec. D 80 F.F.W. Field
Sec. A Field
Sec. D office
Sec. D office
Sec. A office
Sec. D office
Sec. D office

F.F.W. To Columbus
John M Skirrah office

Tires Pose only 9 10 4 1/2 2 1

1.70

.96

I.C.H. 189

Sec. D
Sec. A

8

	1930	F.F. Wright	James C. Crane	John McKirahan	Russ Antrim	Iran Wikorhan	W.G. FULTZ	Roy C. Sykes			
Thur.	Feb. 13	1	1	1	1	1			sec. D.	1.45	Field.
Fri.	" 14	1							sec. D		office.
Sat.	" 15			1			1		sec. D		office.
Mon.	" 17	1	1				1		sec. D.		office.
Tue.	" 18	1	1	1	1	1	1	sykes office	sec. D.	1.25	Field.
Wed.	" 19	1	1	1	1	1	1	sykes office	sec. A.		Field.
Thur.	" 20	1		1	1	1	1		sec. D		office.
Fri.	" 21	1		1	1	1	1		sec. D		office.
Sat.	" <u>22</u>								sec. D		Field.
Mon.	" 24	1	1	1			1		sec. D		office.
Tue.	" 25	1	1	1			1		sec. D		office.
Wed.	" 26	1	1/2	1			1		sec. A		office.
Thur.	" 27	1	1/2	1			1		sec. A		office.
Fri.	" 28	1	1						sec. A		office.
This pay only		12	6	12	5	5	1	9		2.70	

Lunch

Paid By

Washington's Birthday.

I.C.H. 189

Sec. A
Sec. D.

F.F. Wright.

J.C. Crane

John M. Kiraan

C. Roy Sykes

Ross Antires

Iron Wickson.

B.D. Downing.

Charlie Downing.

	1930	F.F. Wright.	J.C. Crane	John M. Kiraan	C. Roy Sykes	Ross Antires	Iron Wickson.	B.D. Downing.	Charlie Downing.		
Sat.	March 1	1	1	1						sec. D	office
Mon.	" 3	1		1						sec. A	"
Tue.	" 4	1								sec. A.	"
Fri.	" 7			1	1					sec. A	"
Sat.	" 8	1		1	1					sec. A	"
Mon.	" 10	1								sec. D	"
Tue.	" 11	1								sec. D	Field office
Fri.	" 14	1								sec. D	office
Mon.	" 17					1	1	1	1	sec. D	Monuments
Wed.	" 19					1	1	1	1	sec. A	Monuments
Thur.	" 20					1	1	1	1	sec. A.	Monuments
Fri.	" 21					1/2	1/2	1	1		Tests.
Sat.	" 22							1	1		Tests
Mon.	" 24							1/2	1/2		Tests
Tue.	" 25							1	1		Tests

Mayer
Here from
Columbus

This page only

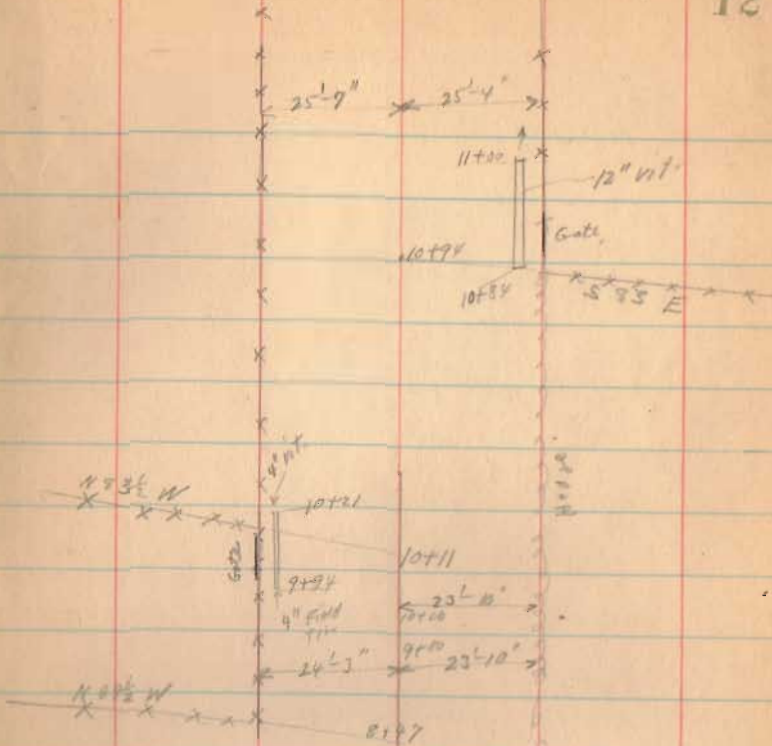
5 2 3 4 3 1/2 3 1/2 6 1/2 6 1/2

(Continued on Page 52)

H. C. H. 189

11-11-27

12



1.C.H. 189

80.63 80.63
 1.27

79.36
77.15

80.63
77.15

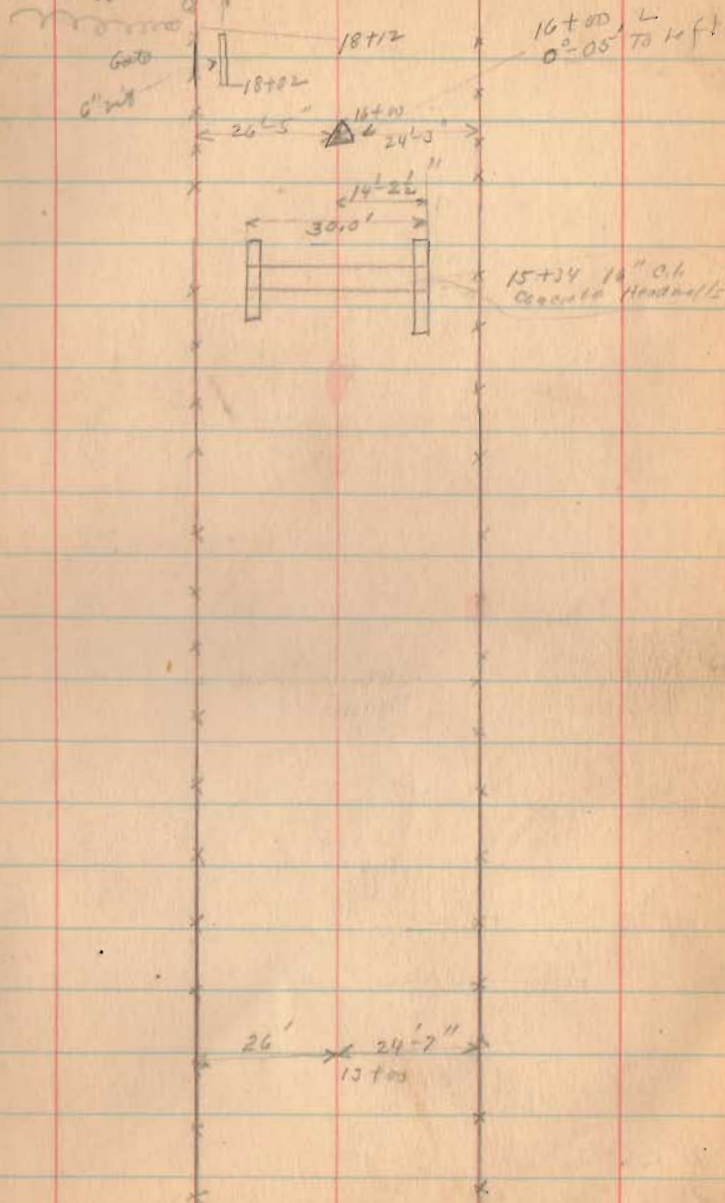
3.48

77.15
5

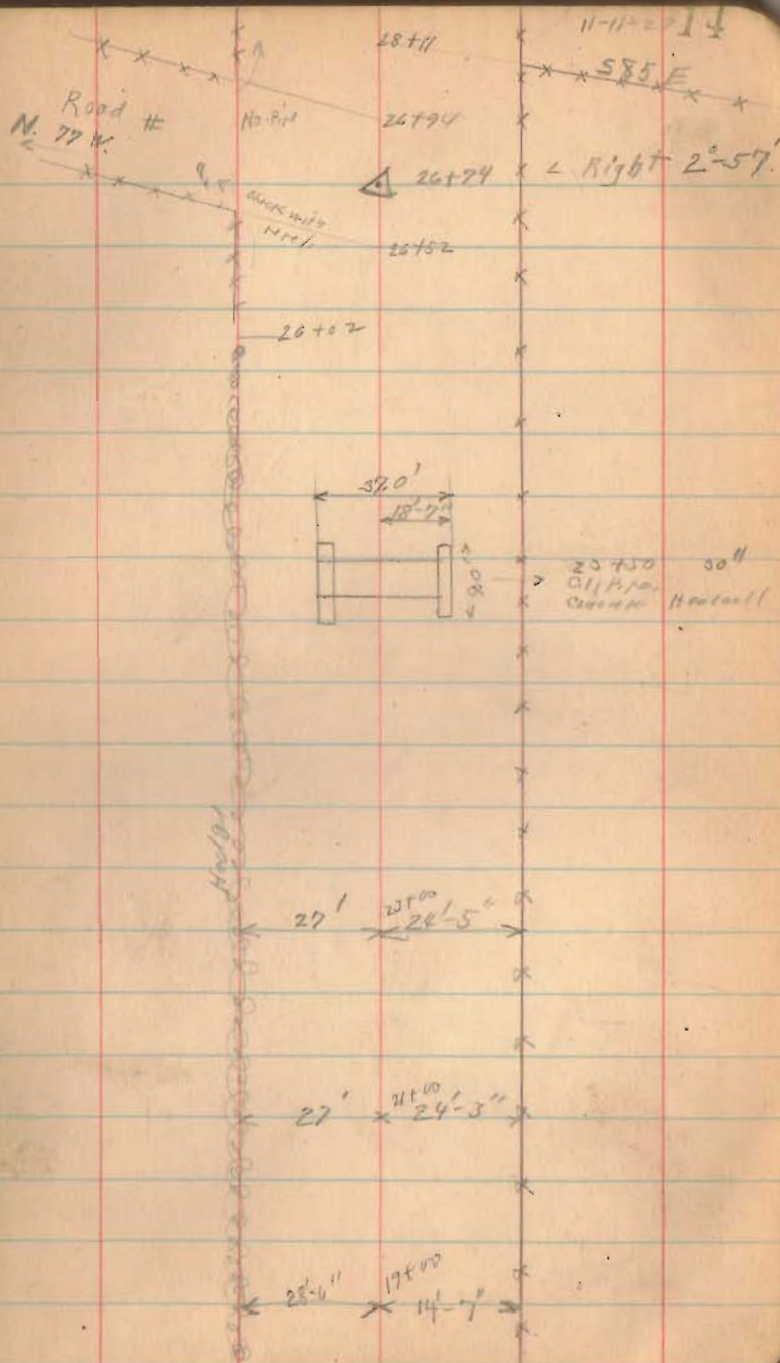
11-11-23

13

S 88° W



1.C.H. 189



I.C.H. 189

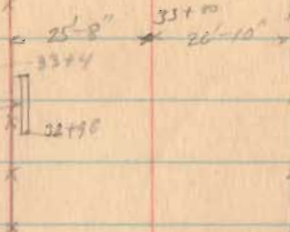
11-11-21

15

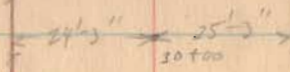
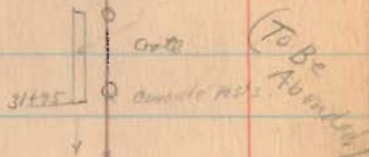
54.70
47.85
6.85

587 W

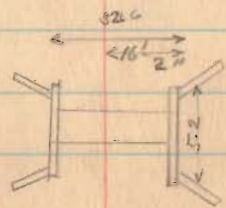
10' of 4" Floor
Thin Small
Go to
head start



16'
4" vit



Stone pile
Outlet for
Small till

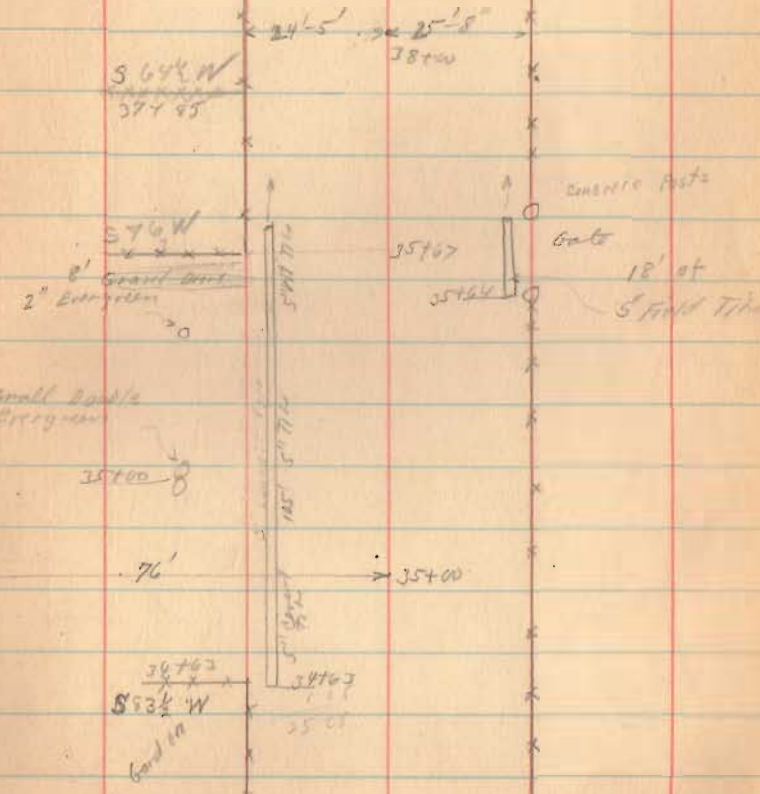


28+87
Concrete Box
3.0 wide

10.11.189

Sec. D

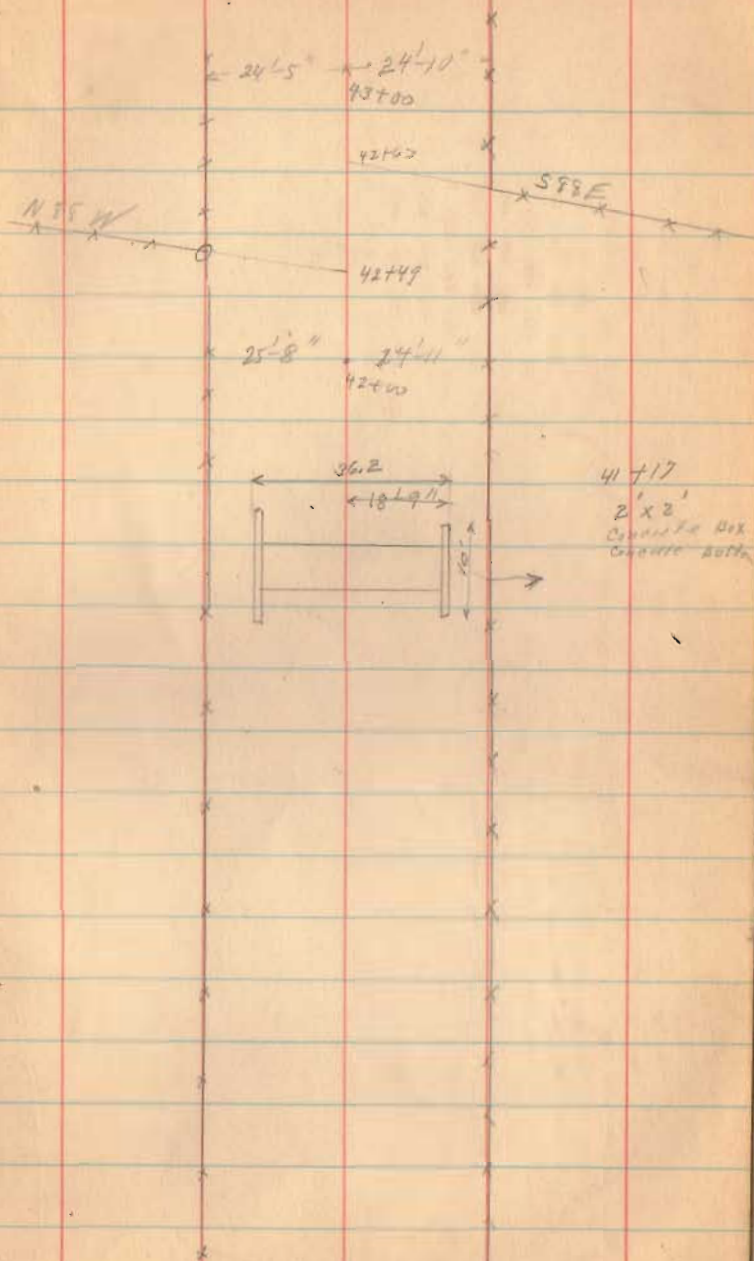
11-11-25(1)



I.C.H. 129 Sec. 17

11-11-29

17



L.C.H. 189. Sec. A

4-10-17

18

49+50

S 72 E

47+12

47+13

46+19

47+11

49+50

79' of 6" vit.

230 ft

8" Grand Vit.

46+30

46+29

46+28

46+49

Picket Fence

BEARN

46+21

55 1/4"

S 83 E

46+17

Gate

12' of 5" vit.

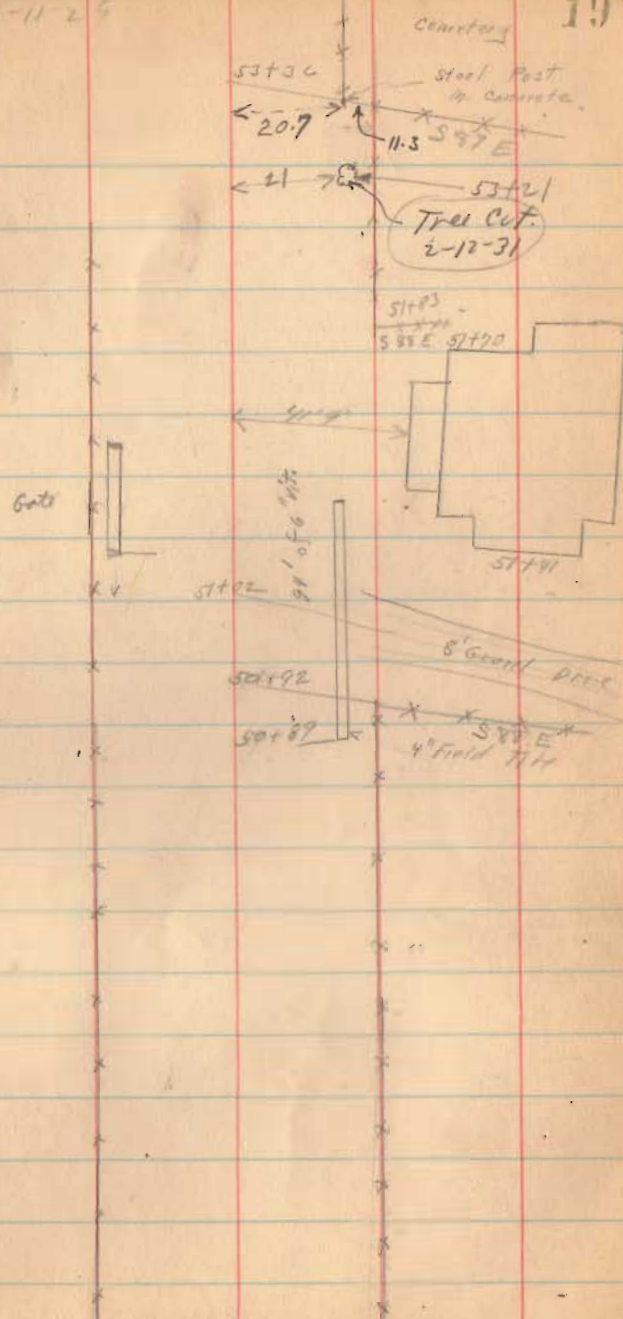
45+80

(To be Abandoned)

7. C.H. 189

11-11-25

Cemetery 19



12' of
6" vit

1.89 sec 0.

Mon-Left 53+40⁵ P.C.

" Left 55+17¹² P.T.

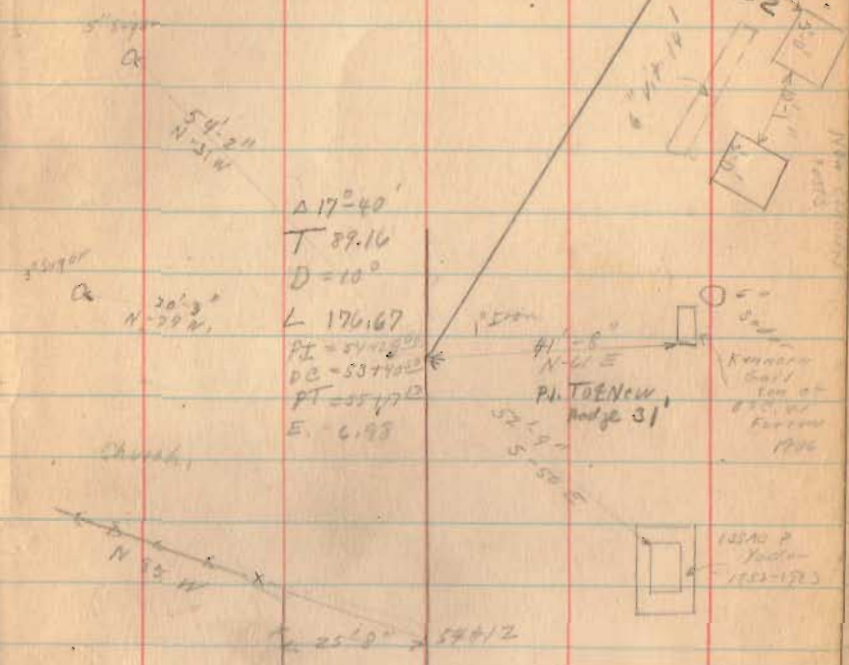
54-2⁰-58'

55-~~8~~⁰-58'

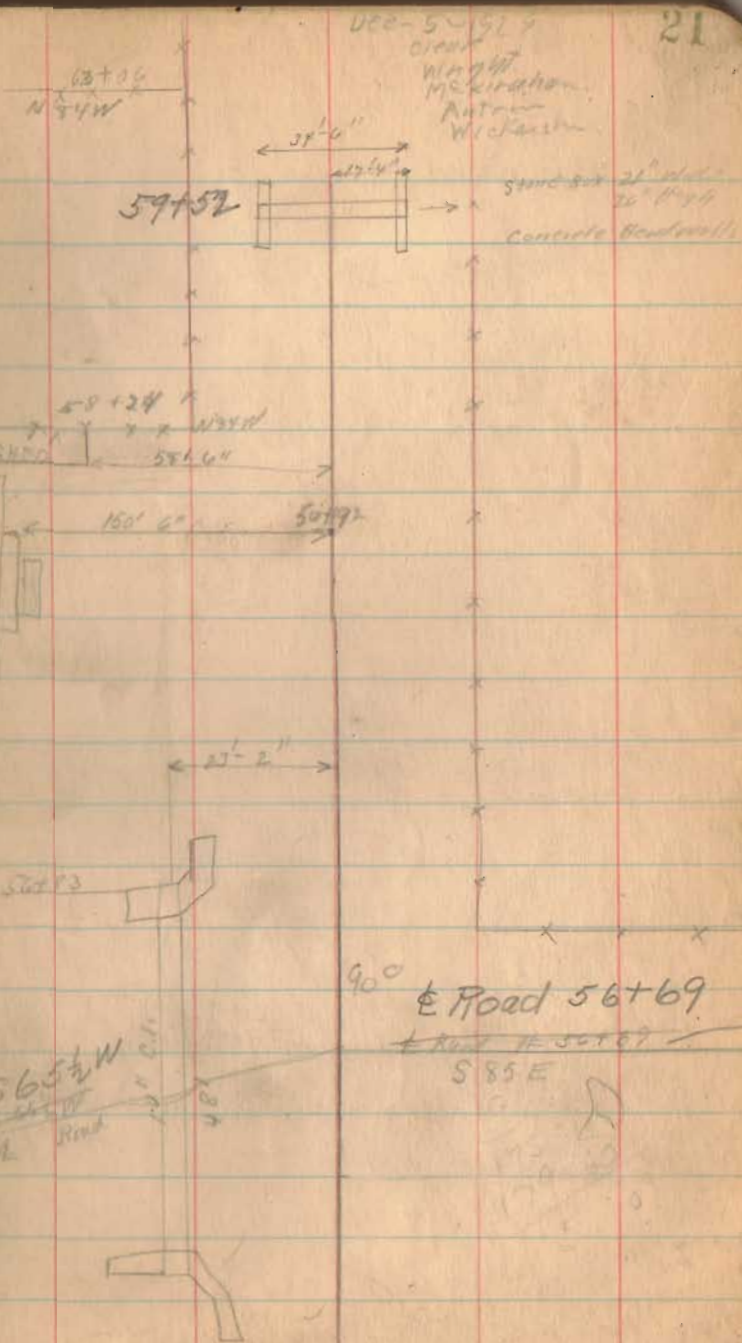
4-25 TO E

Nov. 15-1912
Wagon
Horse
Auto
Wagon

20



10.11.189. Soc. D



12.11.189 Sec. D.

Wagon
76+73
S85 W

89+19

Note units

Level 8817
9043 W
21
57+92.4

10' of Cong. Stone
Mudalls

83+34
N85 W



Gate
76+64

10' 11" 1/2

12-5-29

22

Gate
12' of 6" bit
Clock for
Walls
80
93+20

83+34
S85 E
Stone walls
Concrete
4' 11" 1/2
2' 11" 1/2
62+99

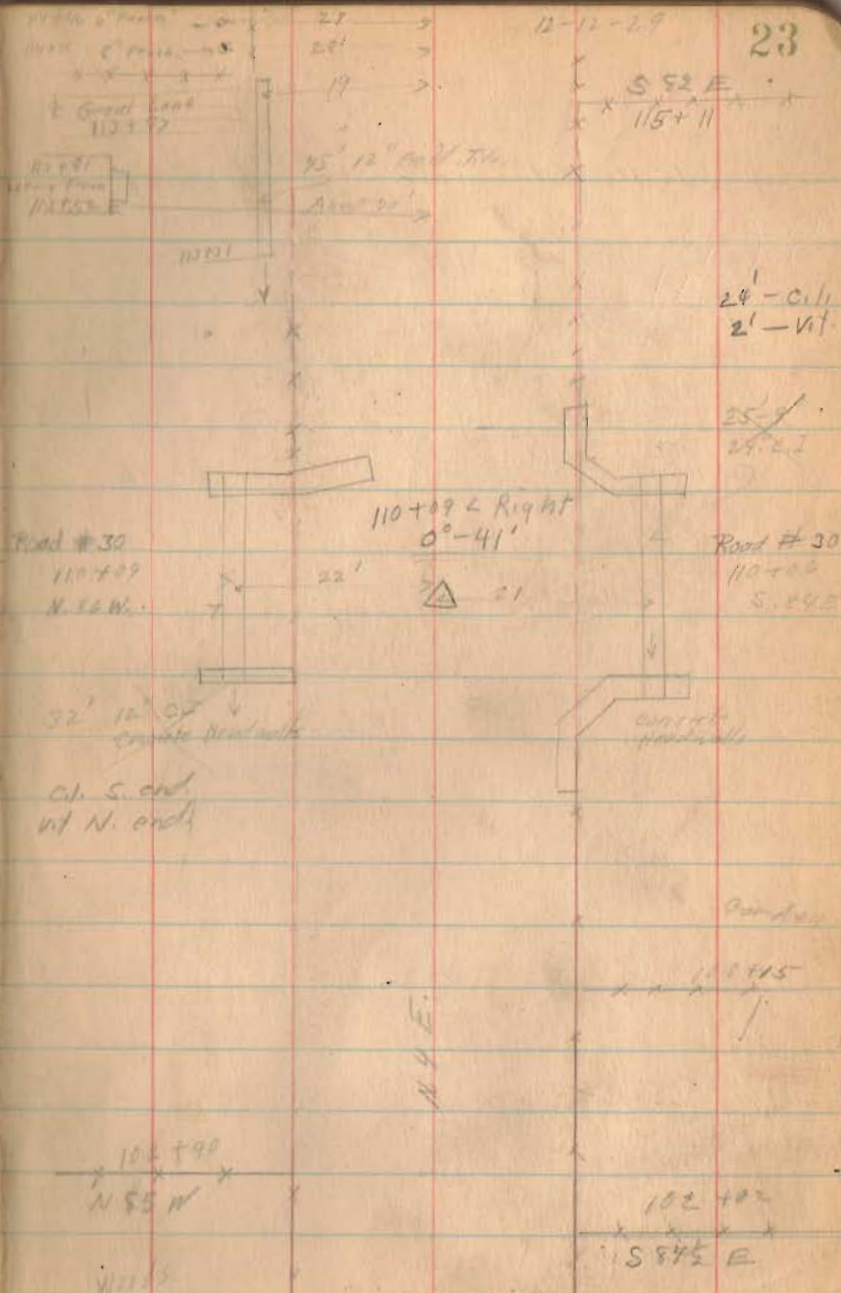
62+62
S84 E

25' 11" 1/2

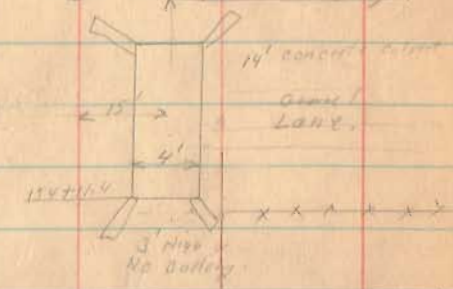
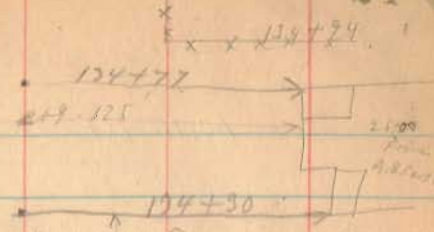
1. C. H. 189 Sec. D.

New & Graded

109+50 -	1291.01
	1288.09
+75 -	1292.23
110	1493.47
+25	1194.72
+50	1195.99

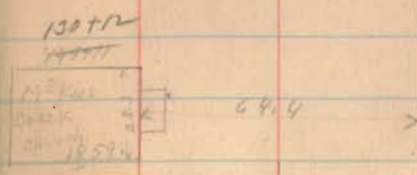


12-11-75



134+78
S 84 E

132+72
S 91 W



127+54
N 83 W

127+51
S 83 E

See survey
by Crowe
Book 521

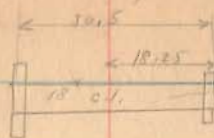
119+36 Ben D. Yoder
Harry Harries

10.11.189. Road

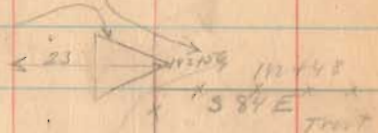
10-12-29

25

142+74



Plank To
Divide Water



24\"/>
V.I.

139+36

Sand. 01. 20'

3 1/2\"/>
DIA.

5 1/2\"/>
DIA.

1337 M

1377 1/2

2 3/4\"/>
DIA.
DIA.
TRUST

121'

1377 1/2

1316

2 3/4\"/>
DIA.

1377 1/2

Δ 137+08
10-27 Right.

100+80

142+74

136+82

584 E

A.B. Carter

10.11.189 P.D.

~~157 19582
158 40-78~~

~~1/2 = 2-20~~

Gravel 146+30
12.01.21

Gravel 146
158+40

150+57

Gravel Layer
153+40

152+77

Gravel 146+30

13+4
8" Red Tilt

Anna Hodges
144+60
J. Hodges

12-11-21

26

PO = 150+21.00
✓ P.I = 152+77.00
P.T = 158+40.00
Δ = 42° 50' 10"

X D = 5'
X E = 4.28'
X L = 156.66'
X R = 1146.25'
X T = 98.61'

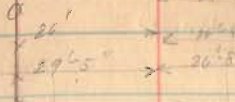
Center
150+14
old concrete
walk 19' long

Gravel base
146+30
14
14
24
14
16

11.11.1895

11-11-1895

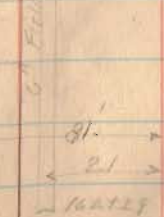
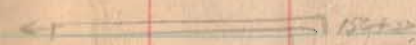
167+81



163+53 21' N. 85 W.

164+00 3'-10" Right

E Road # 163+47 21' S. 20 W.



161+56

162+26

- ← 24' 0" → 162+70
- ← 24' 2" → 162+71
- ← 24' → 162+72
- ← 24' 0" → 162+73
- ← 25' 2" → 162+74
- ← 26' 0" → 162+75
- ← 26' 5" → 162+76
- ← 26' 8" → 162+77
- ← 26' 11" → 162+78
- ← 27' 0" → 162+79
- ← 27' 3" → 162+80
- ← 27' 6" → 162+81
- ← 27' 9" → 162+82
- ← 27' 12" → 162+83
- ← 28' 0" → 162+84
- ← 28' 3" → 162+85
- ← 28' 6" → 162+86
- ← 28' 9" → 162+87
- ← 28' 12" → 162+88
- ← 29' 0" → 162+89
- ← 29' 3" → 162+90
- ← 29' 6" → 162+91
- ← 29' 9" → 162+92
- ← 29' 12" → 162+93
- ← 30' 0" → 162+94
- ← 30' 3" → 162+95
- ← 30' 6" → 162+96
- ← 30' 9" → 162+97
- ← 30' 12" → 162+98
- ← 31' 0" → 162+99
- ← 31' 3" → 162+100
- ← 31' 6" → 162+101
- ← 31' 9" → 162+102
- ← 31' 12" → 162+103
- ← 32' 0" → 162+104
- ← 32' 3" → 162+105
- ← 32' 6" → 162+106
- ← 32' 9" → 162+107
- ← 32' 12" → 162+108
- ← 33' 0" → 162+109
- ← 33' 3" → 162+110
- ← 33' 6" → 162+111
- ← 33' 9" → 162+112
- ← 33' 12" → 162+113
- ← 34' 0" → 162+114
- ← 34' 3" → 162+115
- ← 34' 6" → 162+116
- ← 34' 9" → 162+117
- ← 34' 12" → 162+118
- ← 35' 0" → 162+119
- ← 35' 3" → 162+120
- ← 35' 6" → 162+121
- ← 35' 9" → 162+122
- ← 35' 12" → 162+123
- ← 36' 0" → 162+124
- ← 36' 3" → 162+125
- ← 36' 6" → 162+126
- ← 36' 9" → 162+127
- ← 36' 12" → 162+128
- ← 37' 0" → 162+129
- ← 37' 3" → 162+130
- ← 37' 6" → 162+131
- ← 37' 9" → 162+132
- ← 37' 12" → 162+133
- ← 38' 0" → 162+134
- ← 38' 3" → 162+135
- ← 38' 6" → 162+136
- ← 38' 9" → 162+137
- ← 38' 12" → 162+138
- ← 39' 0" → 162+139
- ← 39' 3" → 162+140
- ← 39' 6" → 162+141
- ← 39' 9" → 162+142
- ← 39' 12" → 162+143
- ← 40' 0" → 162+144
- ← 40' 3" → 162+145
- ← 40' 6" → 162+146
- ← 40' 9" → 162+147
- ← 40' 12" → 162+148
- ← 41' 0" → 162+149
- ← 41' 3" → 162+150
- ← 41' 6" → 162+151
- ← 41' 9" → 162+152
- ← 41' 12" → 162+153
- ← 42' 0" → 162+154
- ← 42' 3" → 162+155
- ← 42' 6" → 162+156
- ← 42' 9" → 162+157
- ← 42' 12" → 162+158
- ← 43' 0" → 162+159
- ← 43' 3" → 162+160
- ← 43' 6" → 162+161
- ← 43' 9" → 162+162
- ← 43' 12" → 162+163
- ← 44' 0" → 162+164
- ← 44' 3" → 162+165
- ← 44' 6" → 162+166
- ← 44' 9" → 162+167
- ← 44' 12" → 162+168
- ← 45' 0" → 162+169
- ← 45' 3" → 162+170
- ← 45' 6" → 162+171
- ← 45' 9" → 162+172
- ← 45' 12" → 162+173
- ← 46' 0" → 162+174
- ← 46' 3" → 162+175
- ← 46' 6" → 162+176
- ← 46' 9" → 162+177
- ← 46' 12" → 162+178
- ← 47' 0" → 162+179
- ← 47' 3" → 162+180
- ← 47' 6" → 162+181
- ← 47' 9" → 162+182
- ← 47' 12" → 162+183
- ← 48' 0" → 162+184
- ← 48' 3" → 162+185
- ← 48' 6" → 162+186
- ← 48' 9" → 162+187
- ← 48' 12" → 162+188
- ← 49' 0" → 162+189
- ← 49' 3" → 162+190
- ← 49' 6" → 162+191
- ← 49' 9" → 162+192
- ← 49' 12" → 162+193
- ← 50' 0" → 162+194
- ← 50' 3" → 162+195
- ← 50' 6" → 162+196
- ← 50' 9" → 162+197
- ← 50' 12" → 162+198
- ← 51' 0" → 162+199
- ← 51' 3" → 162+200
- ← 51' 6" → 162+201
- ← 51' 9" → 162+202
- ← 51' 12" → 162+203
- ← 52' 0" → 162+204
- ← 52' 3" → 162+205
- ← 52' 6" → 162+206
- ← 52' 9" → 162+207
- ← 52' 12" → 162+208
- ← 53' 0" → 162+209
- ← 53' 3" → 162+210
- ← 53' 6" → 162+211
- ← 53' 9" → 162+212
- ← 53' 12" → 162+213
- ← 54' 0" → 162+214
- ← 54' 3" → 162+215
- ← 54' 6" → 162+216
- ← 54' 9" → 162+217
- ← 54' 12" → 162+218
- ← 55' 0" → 162+219
- ← 55' 3" → 162+220
- ← 55' 6" → 162+221
- ← 55' 9" → 162+222
- ← 55' 12" → 162+223
- ← 56' 0" → 162+224
- ← 56' 3" → 162+225
- ← 56' 6" → 162+226
- ← 56' 9" → 162+227
- ← 56' 12" → 162+228
- ← 57' 0" → 162+229
- ← 57' 3" → 162+230
- ← 57' 6" → 162+231
- ← 57' 9" → 162+232
- ← 57' 12" → 162+233
- ← 58' 0" → 162+234
- ← 58' 3" → 162+235
- ← 58' 6" → 162+236
- ← 58' 9" → 162+237
- ← 58' 12" → 162+238
- ← 59' 0" → 162+239
- ← 59' 3" → 162+240
- ← 59' 6" → 162+241
- ← 59' 9" → 162+242
- ← 59' 12" → 162+243
- ← 60' 0" → 162+244
- ← 60' 3" → 162+245
- ← 60' 6" → 162+246
- ← 60' 9" → 162+247
- ← 60' 12" → 162+248
- ← 61' 0" → 162+249
- ← 61' 3" → 162+250
- ← 61' 6" → 162+251
- ← 61' 9" → 162+252
- ← 61' 12" → 162+253
- ← 62' 0" → 162+254
- ← 62' 3" → 162+255
- ← 62' 6" → 162+256
- ← 62' 9" → 162+257
- ← 62' 12" → 162+258
- ← 63' 0" → 162+259
- ← 63' 3" → 162+260
- ← 63' 6" → 162+261
- ← 63' 9" → 162+262
- ← 63' 12" → 162+263
- ← 64' 0" → 162+264
- ← 64' 3" → 162+265
- ← 64' 6" → 162+266
- ← 64' 9" → 162+267
- ← 64' 12" → 162+268
- ← 65' 0" → 162+269
- ← 65' 3" → 162+270
- ← 65' 6" → 162+271
- ← 65' 9" → 162+272
- ← 65' 12" → 162+273
- ← 66' 0" → 162+274
- ← 66' 3" → 162+275
- ← 66' 6" → 162+276
- ← 66' 9" → 162+277
- ← 66' 12" → 162+278
- ← 67' 0" → 162+279
- ← 67' 3" → 162+280
- ← 67' 6" → 162+281
- ← 67' 9" → 162+282
- ← 67' 12" → 162+283
- ← 68' 0" → 162+284
- ← 68' 3" → 162+285
- ← 68' 6" → 162+286
- ← 68' 9" → 162+287
- ← 68' 12" → 162+288
- ← 69' 0" → 162+289
- ← 69' 3" → 162+290
- ← 69' 6" → 162+291
- ← 69' 9" → 162+292
- ← 69' 12" → 162+293
- ← 70' 0" → 162+294
- ← 70' 3" → 162+295
- ← 70' 6" → 162+296
- ← 70' 9" → 162+297
- ← 70' 12" → 162+298
- ← 71' 0" → 162+299
- ← 71' 3" → 162+300
- ← 71' 6" → 162+301
- ← 71' 9" → 162+302
- ← 71' 12" → 162+303
- ← 72' 0" → 162+304
- ← 72' 3" → 162+305
- ← 72' 6" → 162+306
- ← 72' 9" → 162+307
- ← 72' 12" → 162+308
- ← 73' 0" → 162+309
- ← 73' 3" → 162+310
- ← 73' 6" → 162+311
- ← 73' 9" → 162+312
- ← 73' 12" → 162+313
- ← 74' 0" → 162+314
- ← 74' 3" → 162+315
- ← 74' 6" → 162+316
- ← 74' 9" → 162+317
- ← 74' 12" → 162+318
- ← 75' 0" → 162+319
- ← 75' 3" → 162+320
- ← 75' 6" → 162+321
- ← 75' 9" → 162+322
- ← 75' 12" → 162+323
- ← 76' 0" → 162+324
- ← 76' 3" → 162+325
- ← 76' 6" → 162+326
- ← 76' 9" → 162+327
- ← 76' 12" → 162+328
- ← 77' 0" → 162+329
- ← 77' 3" → 162+330
- ← 77' 6" → 162+331
- ← 77' 9" → 162+332
- ← 77' 12" → 162+333
- ← 78' 0" → 162+334
- ← 78' 3" → 162+335
- ← 78' 6" → 162+336
- ← 78' 9" → 162+337
- ← 78' 12" → 162+338
- ← 79' 0" → 162+339
- ← 79' 3" → 162+340
- ← 79' 6" → 162+341
- ← 79' 9" → 162+342
- ← 79' 12" → 162+343
- ← 80' 0" → 162+344
- ← 80' 3" → 162+345
- ← 80' 6" → 162+346
- ← 80' 9" → 162+347
- ← 80' 12" → 162+348
- ← 81' 0" → 162+349
- ← 81' 3" → 162+350
- ← 81' 6" → 162+351
- ← 81' 9" → 162+352
- ← 81' 12" → 162+353
- ← 82' 0" → 162+354
- ← 82' 3" → 162+355
- ← 82' 6" → 162+356
- ← 82' 9" → 162+357
- ← 82' 12" → 162+358
- ← 83' 0" → 162+359
- ← 83' 3" → 162+360
- ← 83' 6" → 162+361
- ← 83' 9" → 162+362
- ← 83' 12" → 162+363
- ← 84' 0" → 162+364
- ← 84' 3" → 162+365
- ← 84' 6" → 162+366
- ← 84' 9" → 162+367
- ← 84' 12" → 162+368
- ← 85' 0" → 162+369
- ← 85' 3" → 162+370
- ← 85' 6" → 162+371
- ← 85' 9" → 162+372
- ← 85' 12" → 162+373
- ← 86' 0" → 162+374
- ← 86' 3" → 162+375
- ← 86' 6" → 162+376
- ← 86' 9" → 162+377
- ← 86' 12" → 162+378
- ← 87' 0" → 162+379
- ← 87' 3" → 162+380
- ← 87' 6" → 162+381
- ← 87' 9" → 162+382
- ← 87' 12" → 162+383
- ← 88' 0" → 162+384
- ← 88' 3" → 162+385
- ← 88' 6" → 162+386
- ← 88' 9" → 162+387
- ← 88' 12" → 162+388
- ← 89' 0" → 162+389
- ← 89' 3" → 162+390
- ← 89' 6" → 162+391
- ← 89' 9" → 162+392
- ← 89' 12" → 162+393
- ← 90' 0" → 162+394
- ← 90' 3" → 162+395
- ← 90' 6" → 162+396
- ← 90' 9" → 162+397
- ← 90' 12" → 162+398
- ← 91' 0" → 162+399
- ← 91' 3" → 162+400
- ← 91' 6" → 162+401
- ← 91' 9" → 162+402
- ← 91' 12" → 162+403
- ← 92' 0" → 162+404
- ← 92' 3" → 162+405
- ← 92' 6" → 162+406
- ← 92' 9" → 162+407
- ← 92' 12" → 162+408
- ← 93' 0" → 162+409
- ← 93' 3" → 162+410
- ← 93' 6" → 162+411
- ← 93' 9" → 162+412
- ← 93' 12" → 162+413
- ← 94' 0" → 162+414
- ← 94' 3" → 162+415
- ← 94' 6" → 162+416
- ← 94' 9" → 162+417
- ← 94' 12" → 162+418
- ← 95' 0" → 162+419
- ← 95' 3" → 162+420
- ← 95' 6" → 162+421
- ← 95' 9" → 162+422
- ← 95' 12" → 162+423
- ← 96' 0" → 162+424
- ← 96' 3" → 162+425
- ← 96' 6" → 162+426
- ← 96' 9" → 162+427
- ← 96' 12" → 162+428
- ← 97' 0" → 162+429
- ← 97' 3" → 162+430
- ← 97' 6" → 162+431
- ← 97' 9" → 162+432
- ← 97' 12" → 162+433
- ← 98' 0" → 162+434
- ← 98' 3" → 162+435
- ← 98' 6" → 162+436
- ← 98' 9" → 162+437
- ← 98' 12" → 162+438
- ← 99' 0" → 162+439
- ← 99' 3" → 162+440
- ← 99' 6" → 162+441
- ← 99' 9" → 162+442
- ← 99' 12" → 162+443
- ← 100' 0" → 162+444
- ← 100' 3" → 162+445
- ← 100' 6" → 162+446
- ← 100' 9" → 162+447
- ← 100' 12" → 162+448
- ← 101' 0" → 162+449
- ← 101' 3" → 162+450
- ← 101' 6" → 162+451
- ← 101' 9" → 162+452
- ← 101' 12" → 162+453
- ← 102' 0" → 162+454
- ← 102' 3" → 162+455
- ← 102' 6" → 162+456
- ← 102' 9" → 162+457
- ← 102' 12" → 162+458
- ← 103' 0" → 162+459
- ← 103' 3" → 162+460
- ← 103' 6" → 162+461
- ← 103' 9" → 162+462
- ← 103' 12" → 162+463
- ← 104' 0" → 162+464
- ← 104' 3" → 162+465
- ← 104' 6" → 162+466
- ← 104' 9" → 162+467
- ← 104' 12" → 162+468
- ← 105' 0" → 162+469
- ← 105' 3" → 162+470
- ← 105' 6" → 162+471
- ← 105' 9" → 162+472
- ← 105' 12" → 162+473
- ← 106' 0" → 162+474
- ← 106' 3" → 162+475
- ← 106' 6" → 162+476
- ← 106' 9" → 162+477
- ← 106' 12" → 162+478
- ← 107' 0" → 162+479
- ← 107' 3" → 162+480
- ← 107' 6" → 162+481
- ← 107' 9" → 162+482
- ← 107' 12" → 162+483
- ← 108' 0" → 162+484
- ← 108' 3" → 162+485
- ← 108' 6" → 162+486
- ← 108' 9" → 162+487
- ← 108' 12" → 162+488
- ← 109' 0" → 162+489
- ← 109' 3" → 162+490
- ← 109' 6" → 162+491
- ← 109' 9" → 162+492
- ← 109' 12" → 162+493
- ← 110' 0" → 162+494
- ← 110' 3" → 162+495
- ← 110' 6" → 162+496
- ← 110' 9" → 162+497
- ← 110' 12" → 162+498
- ← 111' 0" → 162+499
- ← 111' 3" → 162+500
- ← 111' 6" → 162+501
- ← 111' 9" → 162+502
- ← 111' 12" → 162+503
- ← 112' 0" → 162+504
- ← 112' 3" → 162+505
- ← 112' 6" → 162+506
- ← 112' 9" → 162+507
- ← 112' 12" → 162+508
- ← 113' 0" → 162+509
- ← 113' 3" → 162+510
- ← 113' 6" → 162+511
- ← 113' 9" → 162+512
- ← 113' 12" → 162+513
- ← 114' 0" → 162+514
- ← 114' 3" → 162+515
- ← 114' 6" → 162+516
- ← 114' 9" → 162+517
- ← 114' 12" → 162+518
- ← 115' 0" → 162+519
- ← 115' 3" → 162+520
- ← 115' 6" → 162+521
- ← 115' 9" → 162+522
- ← 115' 12" → 162+523
- ← 116' 0" → 162+524
- ← 116' 3" → 162+525
- ← 116' 6" → 162+526
- ← 116' 9" → 162+527
- ← 116' 12" → 162+528
- ← 117' 0" → 162+529
- ← 117' 3" → 162+530
- ← 117' 6" → 162+531
- ← 117' 9" → 162+532
- ← 117' 12" → 162+533
- ← 118' 0" → 162+534
- ← 118' 3" → 162+535
- ← 118' 6" → 162+536
- ← 118' 9" → 162+537
- ← 118' 12" → 162+538
- ← 119' 0" → 162+539
- ← 119' 3" → 162+540
- ← 119' 6" → 162+541
- ← 119' 9" → 162+542
- ← 119' 12" → 162+543
- ← 120' 0" → 162+544
- ← 120' 3" → 162+545
- ← 120' 6" → 162+546
- ← 120' 9" → 162+547
- ← 120' 12" → 162+548
- ← 121' 0" → 162+549
- ← 121' 3" → 162+550
- ← 121' 6" → 162+551
- ← 121' 9" → 162+552
- ← 121' 12" → 162+553
-

1011-168 500.0

12-11-17

Bray

179+80
x x x x x

Ford

195427 & Mid
Low to Ford
Provide T/W

Ford

168+53
x x x x x
168+34

168+09

& Grov. Drain
167+57

167+17

28

Trade
Drain

181+42

Basal #

181+17

195+63

167+38

167+17

168+51

Approx 107'

168+62

168+87

47'

10' Grov. Drain

17'

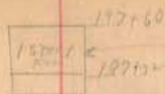
158+08

NOV. 189

Trees on nest

195+28	26'	fr	8"	Calalpa
195+50	20'	"	6"	"
195+76	26'	"	6"	"
196+45	26'	"	10"	"
196+61	20'	"	10"	"
196+80	26'	"	8"	"
196+95	26'	"	10"	"
197+10	26'	"	4 ^v }	"
197+26	20	"	2 ^v }	"
197+62	26"	"	10"	"
197+76	26	"	8"	"
197+93	26	"	8"	"
198+07	26	"	8"	"
198+24	26'	"	10"	"
198+41	26	"	12"	"
198+56	26'	"	8"	"
198+74	20	"	8"	"
198+91	26'	"	8"	"
199+20	26'	"	12"	"

21

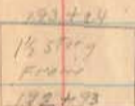


49'

12-12-29



195+10
195+77



Arrow 9'

Ground level
to house

21'
4" fall
T.M.

192+60

Ground
level to
80ft

PH 22

Gate

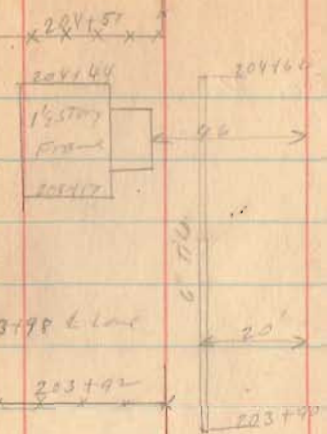
191+19



concrete box 4-0"
36-0"

197+02

104 189 190 P.



203798 & line

x x x 203792



200734

Body

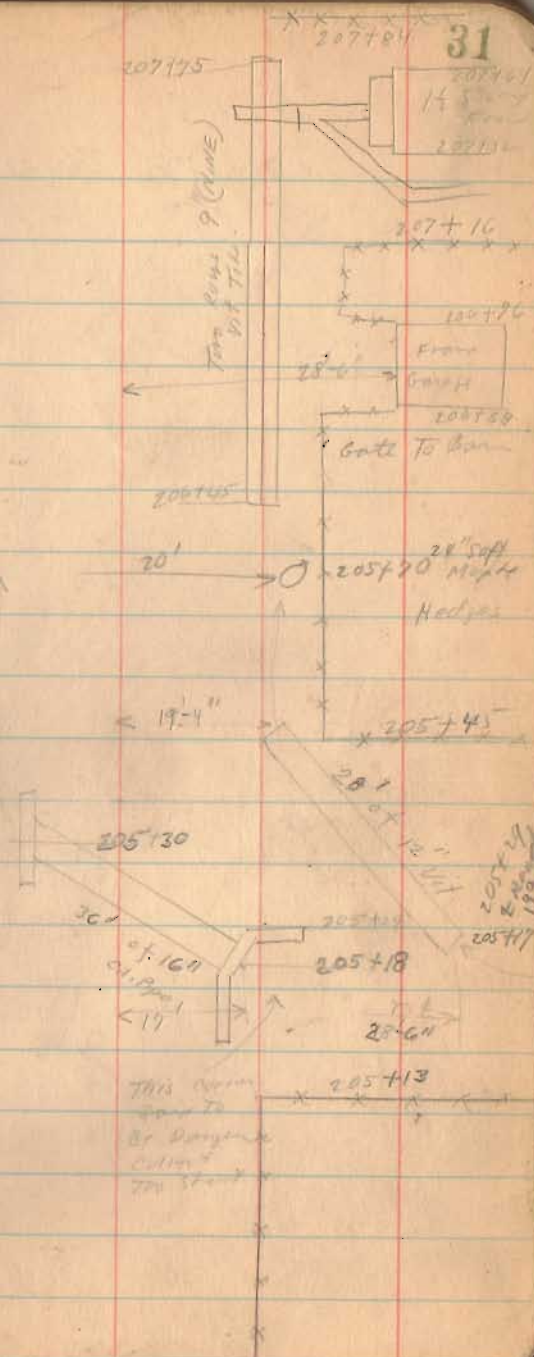
I.C.N. 189 sec. D.

Furrows

207+99

Station

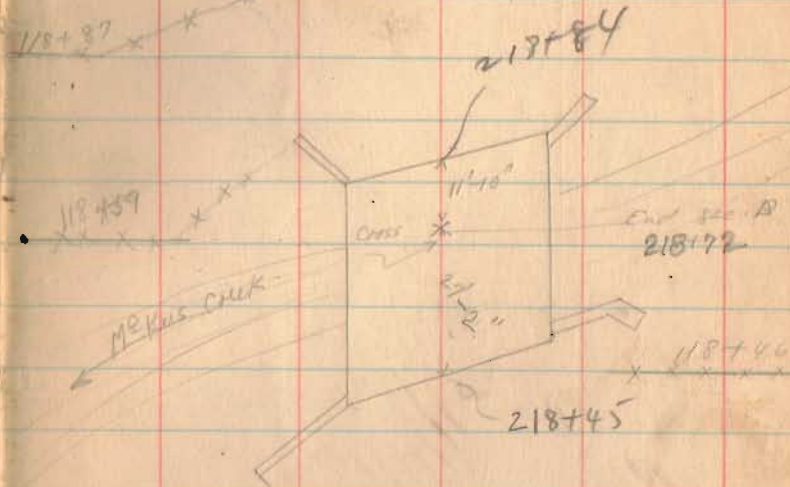
The water part in
ditch cracks



10.H.189 89, D

12-12-29

32



Private
Gravel

± Mod Lime
215+82

Land Area
215+73

I.C.H. 189 Sec. A

Dec. 28 1929

33

cloudy
Wright
McKinnon

204+98
Provide Drill.

231+10
End of
Fence

Gate
221+70

↑
Nails
Needed
↓

SAPP

230+90

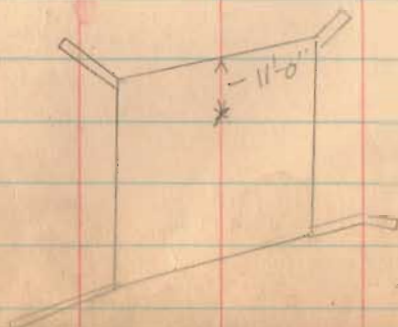
~~XXXX~~

222+96 Fsholtz

no fence

Gate 221+96

Partial
Till



10.11.189 Sec. A

12-18-29

34

insert 1/10

246 + 55

SAPP

243 + 0

7/16

divide
fill
on
DIX

Acres
1/2
Acres

240 + 69

240 + 80

68'

6" SAND TRAIL



Dirt 239 + 80

239 + 73

SAPP

238 + 48

SAPP

1017-139 Pa A

12-25-25

35

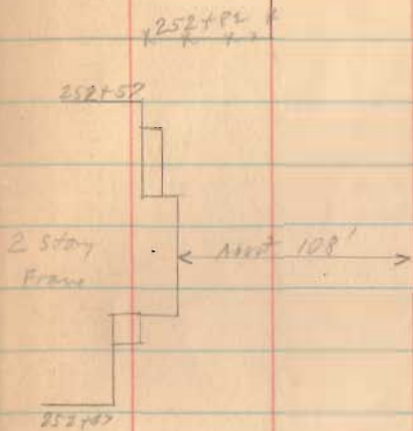
Assue

257+70

mult

12' x
6" x 1"

Contd
254+80



251+93 Lane

251+80

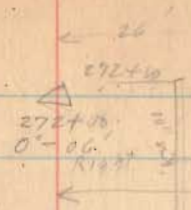
230+20

10 N 187 B A

12-18-25

D. Road #
271+40

270+83



DRIVE 271+58



269+27 DRIVE

269+57

269+11

269+40

267+60

262+86

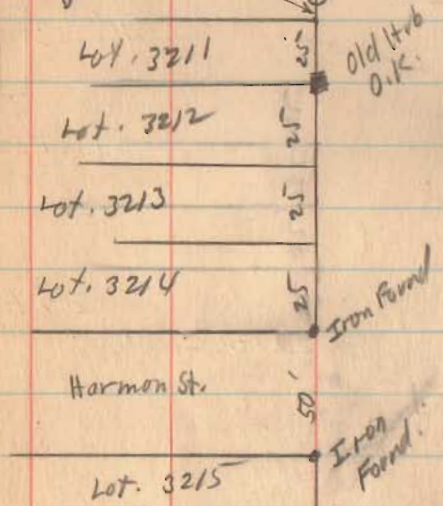
262+86

DRIVE 262+78

I.C.H. 189

March-13-1931
cloudy
Wright
Daily

1.9" Lot Line To
R/W Post
R/W Monument
283+00



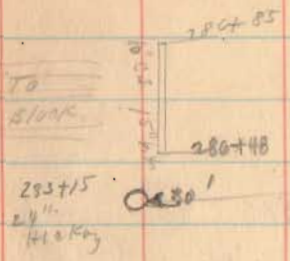
Old Hrb
O.K.

280+73 ²⁵ E St.

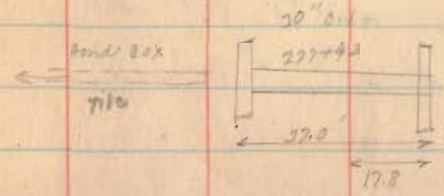
I.C.H. 189

17-18-19

Lane To
Walter Block



Gate
280+00



290+95

274+00
274+00

282+70 277+60
15' 0"

272+44
24" Hickory

271+37
10' 0"

272+17
10' 0"

271+98
10' 0"

N.C.H. 189 1/2. A.

- 1276+98²⁵ @ Parker St. 50'
- 280+73²⁵ @ Harmon St. 50'
- 284+43²⁵ @ Moore St. 40'
- 286+65⁹⁵ @ Lane 25'
- 289+98⁰⁰ @ Clarkson St. 50'
- 298+48⁰⁰ @ Malone St. 50'
- 304+78 @ Alley.

Clark's Addition

12-28-28

$\Delta = 7^{\circ}52'$
 $P.C. = 295+26$
 $P.I. = 296+42$
 $P.T. = 297+102$
 $T_1 = 65.69$
 $E_1 = 2.25$
 $R = 955.39$
 $D = 6$
 $L = 101.11$



CON 189 in 9.

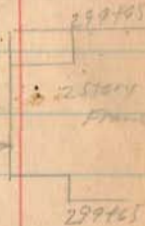
12-28-25

299729

299723
A. 2. 1000
DIM 700 x 100
X 260 x 16



E 68' →



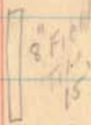
DIM 299752
299740

X
X
X
X

X 298781

DIM 298722
298744
2 story porch
298722

DIM 298740



← 60' →

X 298740
X
X

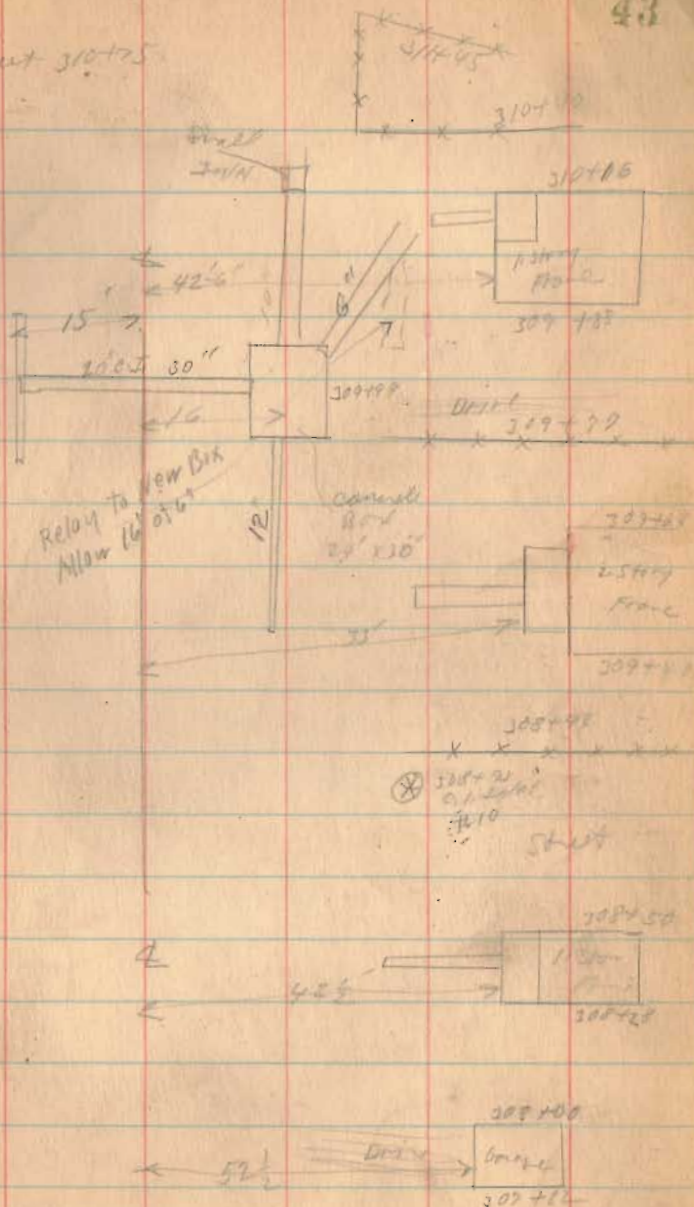
11.11.189 Sec A.

On West Flow line To Top of well 4'-4"
On East " " " " " " 3'-5"

Sheet 310+5

12-18-25

43

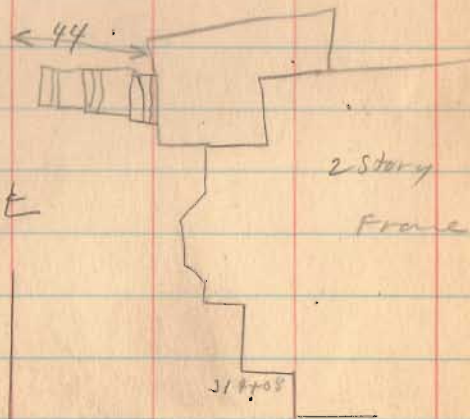


10.11.189 80017

7-19-30

45

315+16
E St.



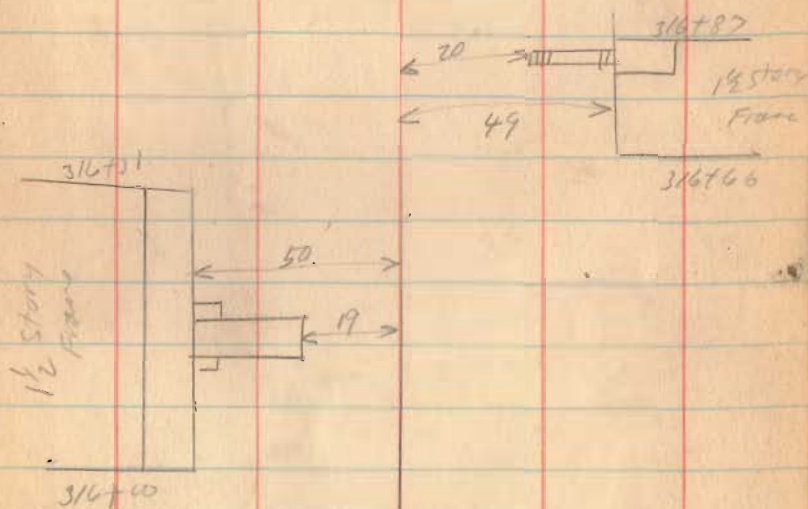
L.C.H. 189 A.

2-15-10

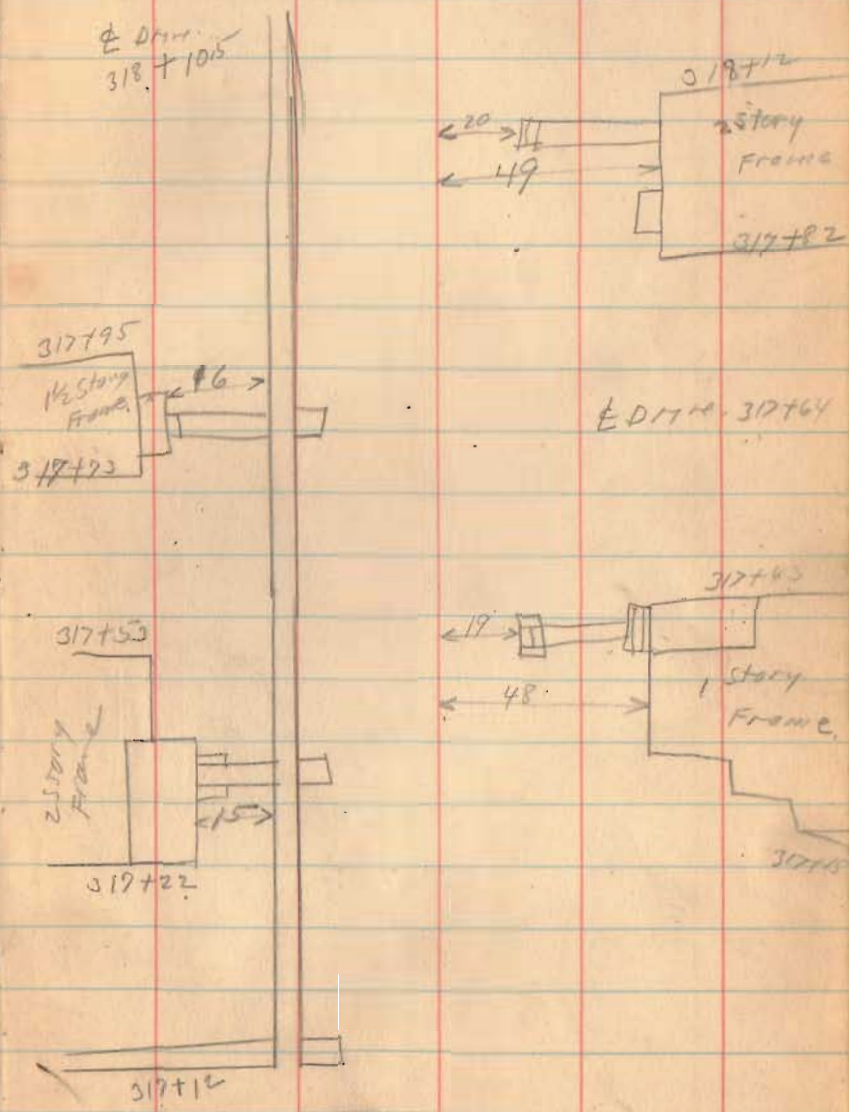
211

EST. 316+86

~~X 317+12~~
~~X X X X~~



10.11.189 Sec. 17



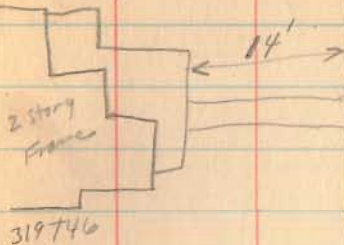
10. H. 189 Sec. A.

2-19-20

27

319+97 E Drive.

319+77

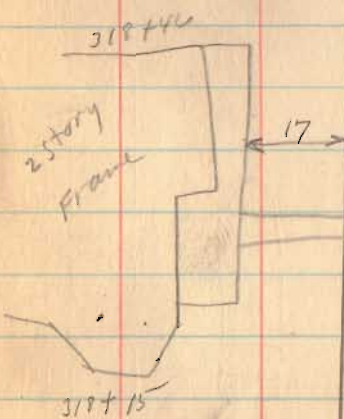


2 story
Frame

319+46

14'

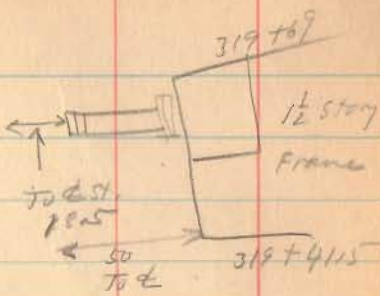
E Drive
319+13



2 story
Frame

319+15

17'



319+67

1/2 story
Frame

319+4115

To St.
1st

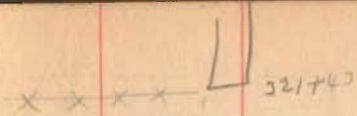
50
To E

016

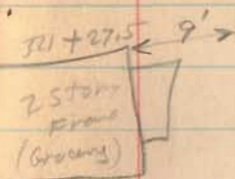
110.A.189 Sec. A

2-19-38

49

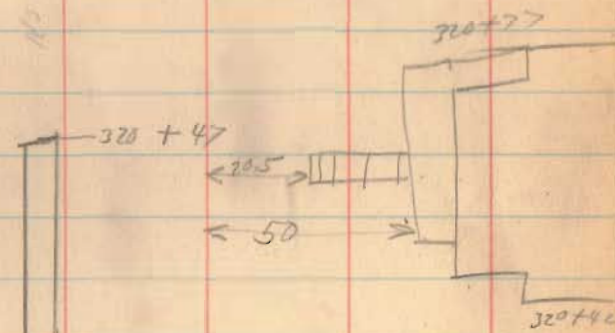
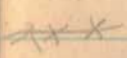


321+37
E Driv.

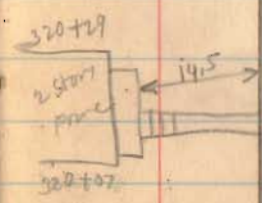


E Driv.
320+95

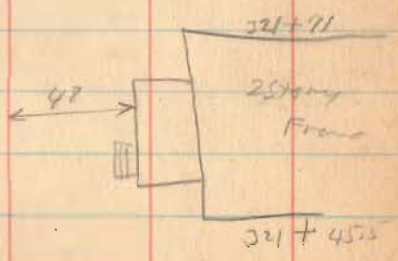
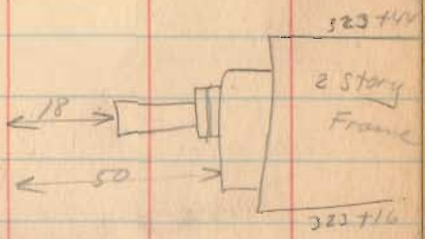
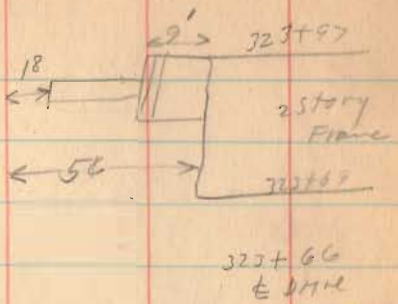
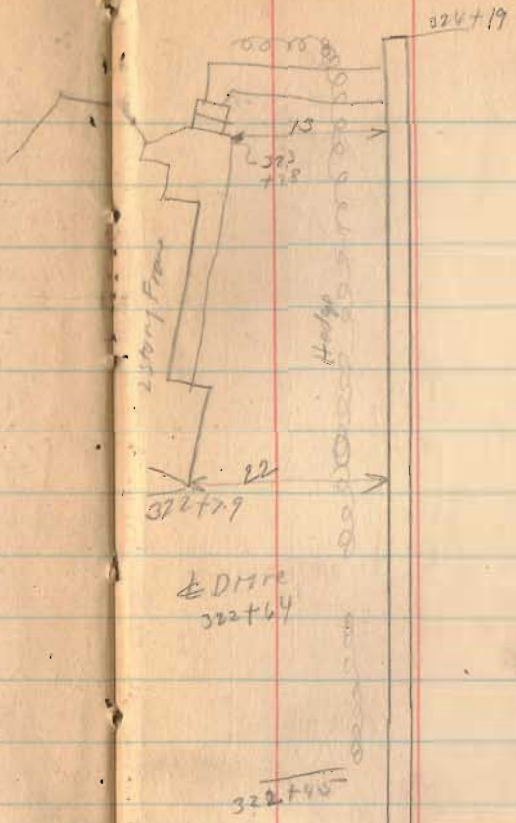
No walk



320+06 E St
To School



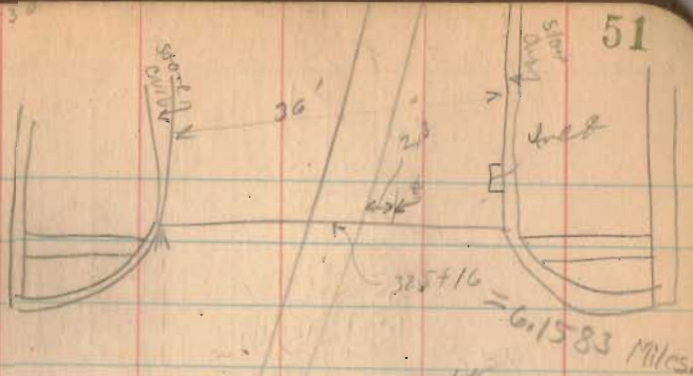
10.A.189 Sec. A



110. N. 185 S. A.

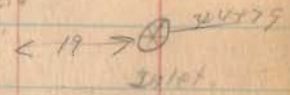
278-30

51



Water Vault

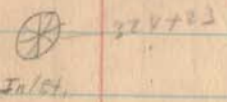
324+92.6
Manhole



5' 7 1/2"
Manhole
Cover 324+83

10' 2 1/2' 1/2'

16'



246

End of
Wall.

1.C.H. 189

Sec. D
Sec. A

(Continued from Page 9)

52

1930

F.B. Wright.
John McKim.
J.S. Crane
E.K. Bredt.

Thur	April 3	1				Sec. D	office
Fri.	" 4	1				Sec. D.	"
Mon.	" 7	1	1			Sec. D	"
Tue.	" 8	1	1			Sec. D	"
Wed.	" 9	1	1			Sec. A	"
Thur.	" 10	1	1			Sec. D	"
Fri.	" 11	1	1			Sec. D.	"
Mon.	" 14	1	1	1		Sec. A	"
Tue.	" 15	1	1			Sec. D	"
Wed.	" 16	1	1			Sec. D	"
Thur.	" 17	1	1			Sec. D.	"
Fri.	" 18	1	1			Sec. D.	"
Sat.	" 19	1				Sec. D.	"
Mon.	" 21	1	1	1		Sec. A	"
Tue.	" 22	1	1			Sec. A	"

This Page Only.

15 " 1 2

F.F.W. High
W.S. Fultz
J.K. Carnes

1930

Wed.	June. 11	1	1	1/2	Sec. A.			office
Thur.	" 12	1	1	1	Sec. A			"
Fri.	" 13	1	1	1	Sec. D			"
Sat.	" 14	1	1	1	Sec. D			"
Mon.	" 16	1	1	1	Sec. D.			"
Tue.	" 17	1	1	1	Sec. D			"
Wed.	" 18.	1			Sec. D			To Sidney
Thur.	" 19	1			Sec. D	Hotel 2.50	F.F.W. Co. 48	To Columbus
Fri.	" 20	1			Sec. D	(19th) Dinner 45 supper 45 (20th) Breakfast 30	F.F.W. Co. 58 F.F.W. Co. 58	From Columbus
Sat.	" 21	1	1/2	1/2	Sec. D			office
Mon.	" 23	1	1		Sec. D	.80	F.F.W. Co. 48	To Sidney
Tue.	" 24	1	1	1	Sec. A			office
Wed.	" 25	1	1	1	Sec. A			office
Thur.	" 26	1	1	1	Sec. D	.70	F.F.W. Co. 48	To Sidney

Lunch.

Hirey

This Post only 14 10 9

6 00 \$ 12 12

Engineering on

I.C.N. 189 To and including June-26-1930

Page		Wright	McKinham	Antrim	Wickens	Crane	Sykes	FOLTZ	B.O. Downey	C. Downey	Bridge	Carnes	Liray	Kunkle Hotel	Stakes
6	10 1/2	11	10 1/2	10 1/2	1										
"	7	9	13	4	4 1/2	2	1								
"	8	12	12	5	5	6	9	1							
"	9	5	3	3 1/2	3 1/2	1	4	6 1/2	6 1/2						
"	52	15	11			1									
"	53	15	13				4								
"	54	15	12			1	1								
"	55	14					10 1/2								

\$ 108	\$ 7.05	24.00	\$ 266.38
1.96	1.70		198.16
	2.70		336.70
			182.25
			188.25
	.70		209.70
10.22	.50		203.23
12.22	6.00		208.87

Total Cost Survey and Plans.
 \$ 1789.54 = 5.50 Per Station.
 Length 325 + 16

Total Dogs	Rate
95 1/2	\$ 8.00
75	5.00
23	4.00
23 1/2	4.00
12	7.25
14	10.00
10 1/2	4 1/2
6 1/2	4.00
6 1/2	4.00
2	6.00
9	35.00

764.00	375.00	92.00	94.00	87.00	140.00	74.25	26.00	26.00	12.00	31.50	25.14	18.65	24.00
--------	--------	-------	-------	-------	--------	-------	-------	-------	-------	-------	-------	-------	-------

\$ 1789.54

I.C.H. 189 sec A.
800.0.

F.F. Wright
W.G. Fultz
J.K. Carnes.

1930

Fri.	June 27	1			
Sat.	" 28	1			
Mon.	" 30	1			
Tue.	July 1	1	1	1	
Wed.	" 2	1			
Sat.	" 5	1			
Sat.	" 12				

5	2	1
4000	900	350

Lunch

Henry

40 FIFW
48

Sec. D .60

F.F.W.
116

Sec. D

Sec. D .60

F.F.W.
116

Sec. D

Sec. D

F.F.W.
20

To Sidney
office
to
Columbus
office
to
Columbus
office
Field

(Time Continued in
Book 554 Page 6)

Page 56 Totals 1789.54
 Page 57 72.10
 to Book 554 \$ 1861.64

\$ 160

1800

This Page only 72.10

I.C.H. 189

Paving at R.R. Lake Ave.

I.C. & E. Elec. Line.

Note Same Date

At T. & O.C.

Deduct 8'-10" (East end)

Deduct 8'-7" (West end)

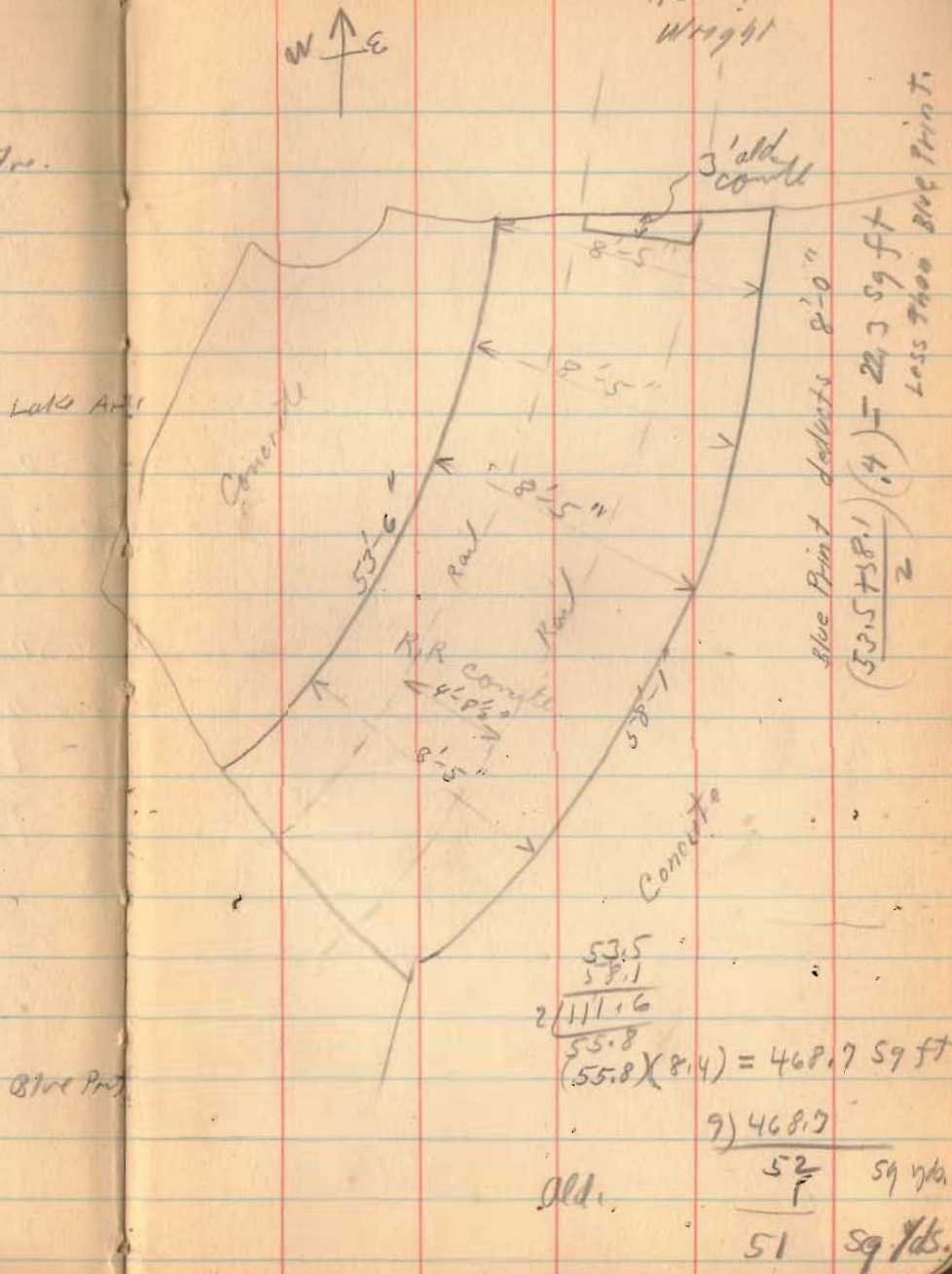
$$\frac{8'-10" + 8'-7"}{2} - 8' - 8\frac{1}{2}" = 8.7'$$

Blue Print Deducts 10' at R.R.

$$\frac{10.0 + 8.7}{1.3} (20) = 260 \text{ Sq. feet More than Blue Print}$$

Aug 12, 1931.
Raining
Wright

58



325+92 ± Lake.

cum. P.C. = 295+76³¹
 P.I. = 296+62
 P.T. = 297+07⁴²

$$\frac{296}{295+76} \frac{31}{69}$$

6° D. cum.

3° n 180' p. w.

118 ft. front

296+00 = 43' from P.C.

297+00 30-43' n P.C.

~~110 + 09~~ L Right. $0^{\circ} - 41'$

Road East S. 84. E 110 + 06

Road West. N. 86 W. 116 + 09

137 + 00 $1^{\circ} - 25'$ Right.

$9^{\circ} - 56'$ Left. To $4^{\circ} - 58'$ $\frac{20690}{869.50}$

R. 114628

T. R. $T = \frac{R}{2} = 114628$ (01690)

$5 \frac{21.89}{4.39}$

98.61

$E = T \tan \frac{\theta}{4}$

98.61

(98.61)

$\tan 2^{\circ} 29' = 0.4237$ = 4.28

$L = \frac{TD \Delta}{D} = \frac{1.8266}{1.86.66}$

P.C. $\frac{156 + 21.20}{98.61}$

P.I. $\frac{157 + 19.81}{158}$

$\frac{150 + 21.20}{786.66}$

$\frac{158}{07.86}$

S. 83 E
N. 85 W

163 + 07 25° E Road East

163 + 53.75 25° E Road West

164 + 00 $0^{\circ} - 18'$ Right

218 + 92 Curve on Rd, end of Road.

$\frac{98.61}{99.48}$

272 + 00 $0^{\circ} - 06'$ Right

$7^{\circ} - 52'$ Right

EX 2

$\tan 3^{\circ} - 50' = 0.068740$

$\frac{.06874}{.06874}$

$\frac{295 + 00}{1 + 41} = 35$

$L = \frac{1000}{p} = 1.3111$

296 + 41.33 P.I. 10' off P.I. = 296 + 42

D = 6'

P.C. = 295 + 72.31

R = 955.37

P.T. = 297 + 09.43

T = R $T = \frac{R}{2} = (955.37) (0.0876)$

65.69

$E = T \tan \frac{\Delta}{4} = 2.25$

Avs for Monuments

04+00	156+21 ³⁰ RC
14+00	158+07 ⁸⁶ P.T.
6+00	163+00
117+00	164+00
16+00	170+00
20+00	175+00
25+00	179+00
27+50	184+00
33+00	191+00
37+00	196+00
43+00	201+00
48+00	206+00
53+00 ^{RC}	211+00
55+17 ^{P.T.}	214+00
61+00	221+00
65+00	226+00
70+00	231+00
76+00	236+00
80+00	241+00
85+00	246+00
89+00	251+00
93+00	256+00
104+00	261+00
109+00	266+00
111+00	272+00
115+00	278+00
120+00	283+00
125+00	288+00
131+00	
134+00	
137+00 90° from North	
142+00	
147+00	
152+00	

See Plan L-16 for
R/W Monuments as Placed.
Note Same Chayes 1-17-3

Ned About 40 More R/W Posts

PC 295+76³¹

P.T. 297+02⁴²

302

307

313

319

324

2.5 Miles N. of W. Liberty

N.W. cor + Road's Granite Boulder II 1195.10

1.5 Miles N. of W. Liberty + Road's R.M.

mail N.W. cor Oak Tree 1164.48

Gov. Elevations

1 Mi S. of Bellefontaine Court House

N.E. cor of cross roads red Granite

Boulder II 1224.50

Top of s. rail T. & O. C 1228.2

2 Mi. S. of Bellefontaine E. side of

road T. & O. Base of Fence Post. 1214.49

Abt. N.E. cor M³ miles
Kear's Creek II 1192.87

3.2 Miles S. of Bellefontaine T. & O. E.

on end of Iron Down 1198.39

4 Miles S. of Bellefontaine S.W. cor
1. Post 1215.84

B.M. Wild Cherry S.W. Sta. 27 1164.10
 B.M. 2 Nails Bottom Yard Corner Post. ^{alt. 35+60} 1164.50
 B.M. 30" Maple at S.S. 47 1165.16
 B.M. 40" White Oak, Sta. 57 1165.73
 B.M. 38" White Oak ^{100' W. 78+50} Stump 1153.91
 B.M. Top Cor. Post Sta. 88 1154.01
 B.M. Sweet Hickory E of 103+25 1183.78
 B.M. N.E. Cor. Cement ^{alt. Sta. 114+} walk 1208.23
 B.M. 18" Oak W. of 125+10 1253.75
 B.M. Center of S. Parapet wall
 Culvert 146+ 1200.44
 B.M. Gov. B.M. S.W. Cor. Cross ^{Roads 163+84} 1215.843
 B.M. 10" Walnut 15+05 1243.40
 B.M. 36" Stump 8' R 36+70 1211.87
 B.M. Gov. B.M. at M^e Kees Creek 1192.73

163+84
 55+20
 219+04 End. of Sec. D

B.M. ^{at School 110.75}
 10' E of S. Entrance

B.M. S.W. Cor. Day Mon. Base
 near Sta. I 1186.33
 B.M. Large rock ss. 12 1190.59
 B.M. Wild Cherry S.W. Sta. 27 - 1164.10

Val 60se 22 Altitud Dec. 3-1838
 Val 60se 56-83 altitud.
 83 June 1839

Road from 24 to 44 posts to
 H 60' wide.

Survey continued
 = Book 554.