

March 26-1931
 Ben D. Yoder J. S. Crane
 Surrey Leonard Yoder

27

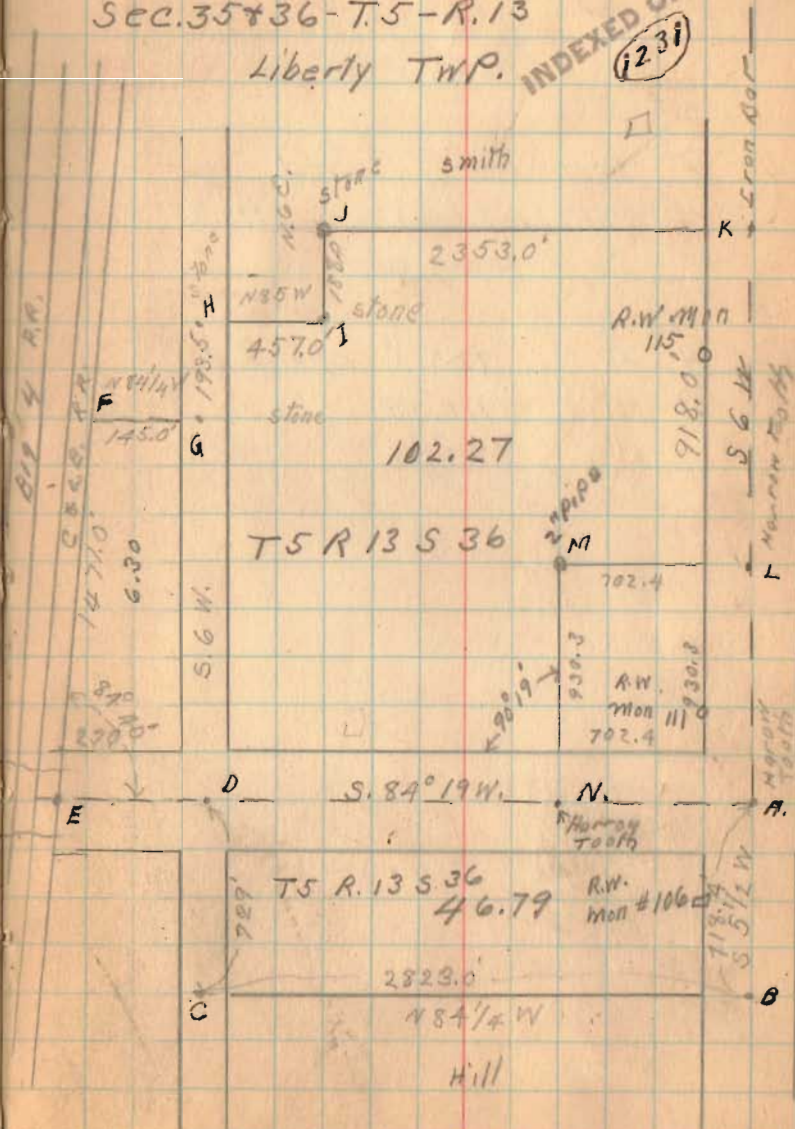
Sec. 35 & 36 - T. 5 - R. 13

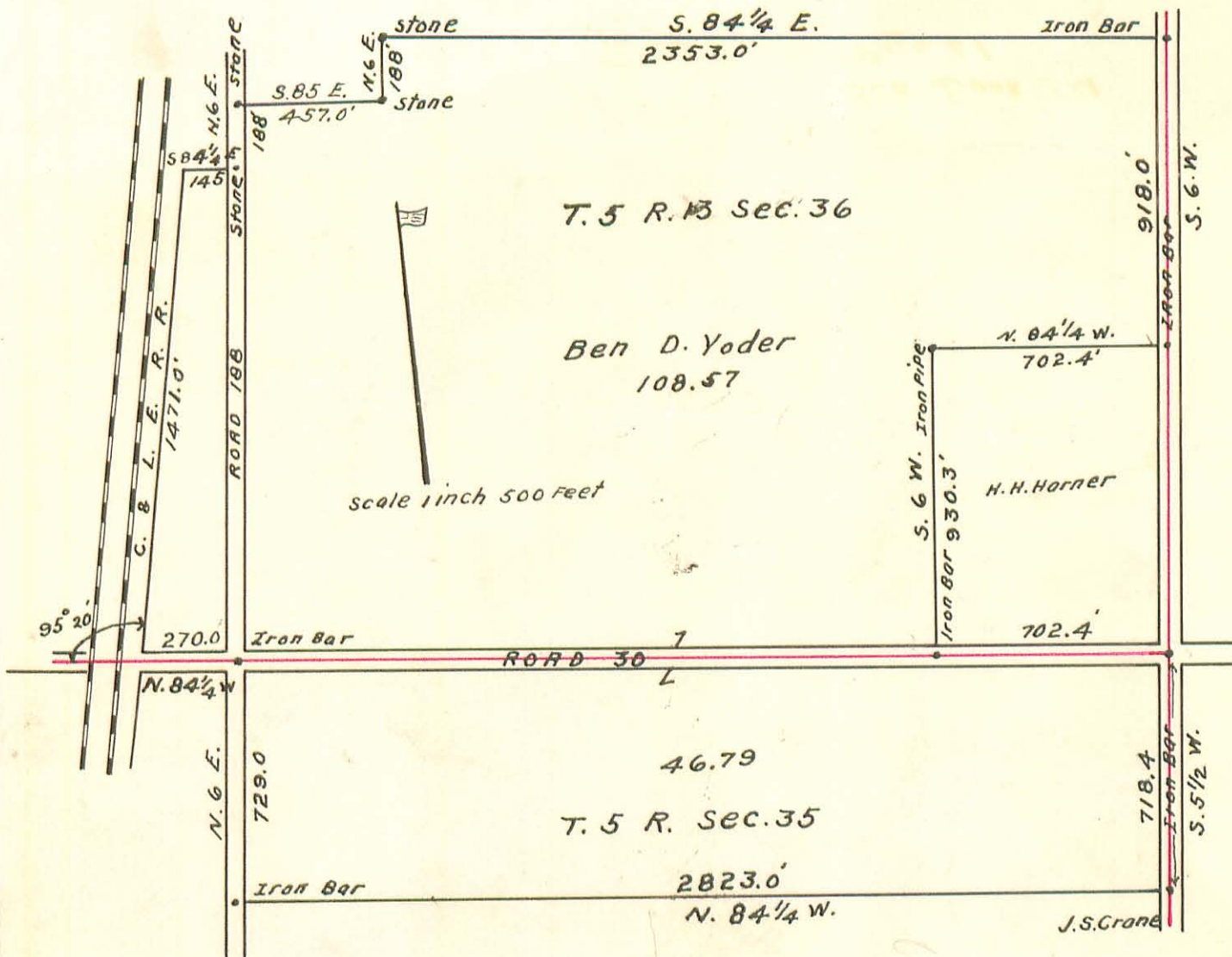
Liberty Twp.

INDEXED ON MAP
 (231)

- A = Iron Bar found
- B = " " set
- C = " " set
- D = " " "
- E = Point of overhead Bridge
- F = stake set
- G = stone found
- H = " "
- I = " "
- J = " "
- K = Iron Bar found
- L = " " "
- M = " Pipe "
- N = " Bar found

36' from & Track to End of
 Bridge
 12' from end of Bridge
 to fence north





The following described lands situated in Liberty Township, Logan County, Ohio, and being in Sections 35 and 36, Town 5, Range 13, bounded and described as follows:-

Beginning at an iron bar in the center of the Bellefontaine and West Liberty Pike and the S.E. corner of Section 36, thence with the center of said Pike and the East line of Sec. 35, S.5½ W. 718.4 to an iron bar at the N.E. corner of the Hill land; thence with the North line of said Hill land N.84¼ E. 2823.0 feet to an iron pin in the center of Road # 188, thence with the center of said Road N.6 E. 729.0 feet to an iron bar in the center of Road # 30 and then South line of Section 36; thence with the center line of Road #30 and line between Sections 35 and 36 N. 84¼ W. 270.0 feet to the East right of way of the C. and L.E. Railroad, thence deflecting 95° 20' right and running with East line of C. and L.E. Railroad 1471.0' to a stake at the S.W. corner of R.T. Smith land, thence with Smith's S. line S.84¼ E. 145.0' to a stone in the center of Road #188 thence with the center of said Road N.6 E. 193.5 feet to a stone at another corner of the Smith land, thence with Smith's S. line S.85 E. 457.0 feet to a stone at another corner of Smith land, thence North 6 E. 188.0 feet to a stone in Smith's South line, thence with said S.84¼ E. 2353.0 feet to an iron bar in the center of Bellefontaine and West Liberty Pike and the East line of Section 36; thence with said section line S.6 W. 918.0 feet to an iron pin at the N.E. corner of Harry Harner's 15 acre tract; thence with Harner's N. line N.84¼ W. 702.4 feet to an iron pipe at his N.W. corner; thence with Harner's W. line S.6 W. 930.3 feet to an iron pin in the center of Road # 30 and the line between Sections 35 and 36; thence with said line S.84¼ E. 702.4 feet to place of beginning, containing 155.35 acres of which 46.79 acres are in Section 35, and 108.57 acres are in Section 36.

See Book 521
Page 27

(1231) IP
INDEXED ON MAP

108.57
46.79
155.36