

Lee Surveying and Mapping Co., Inc.

Land Surveys • Topography • Subdivisions • Construction Layout

117 N. Madriver St.
Bellefontaine OH 43311



Phone: (937) 593-7335
Fax: (937) 593-7444

PAUL T. HUMBLE AND JOHN J. ZIESSLER 22.406 ACRES

Lying in Sections 26 and 32, Town 4, Range 14, City of Bellefontaine, Liberty Township, Logan County, Ohio.

Being out of the Paul T. Humble and John J. Ziessler original 44.475 acre tract as deeded and described in Official Record 332, Page 700 of the Logan County Records of Deeds and being more particularly described as follows:

Beginning at a railroad spike found at the intersection of the north line of Section 32 and the center-line of South Main Street (U.S. Route 68.)

THENCE, with the center-line of South Main Street, S 4°-30'-00" E, a distance of 812.67 to a PK nail found.

THENCE, with the north line of Gunntown Road (80 feet wide), and the south line of the State of Ohio 5.00 acre tract (Vol. 206, Pg. 2) and the extention of both lines, S 86°-34'-19" E, a distance of 40.39 feet to a concrete monument found.

THENCE, with the east line of South Main Street across Gunntown Road, S 4°-30'-00" E, a distance of 80.77 feet to a 5/8 inch iron rod set.

THENCE, with the south line of Gunntown Road and the north line of the Frisch's Restaurants 1.238 acre tract (O.R. 252, Pg. 773), S 86°-34'-19" E, a distance of 299.61 feet to a 5/8 inch iron rod set at the TRUE POINT OF BEGINNING.

THENCE, with the south line of Gunntown Road, S 86°-34'-19" E, a distance of 726.81 feet to a 5/8 inch iron rod set.

THENCE, continuing with the south line of Gunntown Road, S 86°-27'-01" E, a distance of 662.54 feet to a 5/8 inch iron rod found.

THENCE, with the west line of the Brookstone Limited Partnership, an Ohio Limited Partnership, 6.420 acre tract (O.R. 445, Pg. 167), S 3°-32'-59" W, a distance of 726.76 feet to a 5/8 inch iron rod found.

THENCE, with the City of Bellefontaine Corporation Line and the north line of the L. Dale Elleman, Jr., etal, 48.31 acre tract (O.R. 61, Pg. 437), N 86°-28'-22" W, a distance of 1129.13 feet to a 5/8 inch iron rod set.

THENCE, with the east line of the Ryan's Family Steak Houses, Inc. 2.500 acre tract (O.R. 279, Pg. 187), N 3°-31'-37" E, a distance of 230.00 feet to a 5/8 inch iron rod set.

THENCE, with the north line of the said 2.500 acre tract, N 86°-28'-23" W, a distance of 489.70 feet to a 5/8 inch iron rod set.

INDEXED ON MAP
931 1D-1

Lee Surveying and Mapping Co., Inc.

Land Surveys • Topography • Subdivisions • Construction Layout

117 N. Madriver St.
Bellefontaine OH 43311



Phone: (937) 593-7335
Fax: (937) 593-7444

THENCE, with the east line of South Main Street, N 4°-30'-00" W, a distance of 151.88 feet to a 5/8 inch iron rod set.

THENCE, with the lines of the Tumbleweed, Inc., a Delaware Corporation, 1.168 acre tract (O.R. 422, Pg. 705), the following three (3) courses:

S 86°-34'-19" E, a distance of 318.64 feet to a 5/8 inch iron rod set.

N 11°-16'-05" W, a distance of 149.55 feet to a 5/8 inch iron rod set.

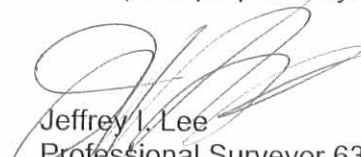
With a curve to the right having a central angle of 6°-46'-22", a radius of 175.00 feet, an arc length of 20.69 feet, and a chord bearing N 7°-52'-39" W, a distance of 20.67 feet to a 5/8 inch iron rod set.

THENCE, with the east line of the aforementioned 1.238 acre tract, N 4°-30'-00" W, a distance of 181.74 feet to the point of beginning.

Containing 22.406 acres of which 9.115 acres are in Section 26 and 13.291 acres are in Section 32.

The basis for bearings is the center-line of South Main Street being S 4°-30'-00" E, and all other bearings are from angles and distances measured in a field survey by Lee Surveying and Mapping Co., Inc. on January 30, 1996.

Description prepared by:


Jeffrey I. Lee
Professional Surveyor 6359
April 6, 2000
Revised April 10, 2000

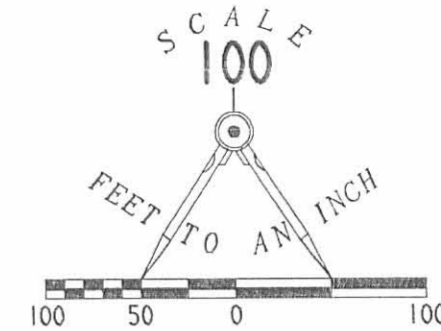


L 1371

ORIGINAL STAMP IN GREEN

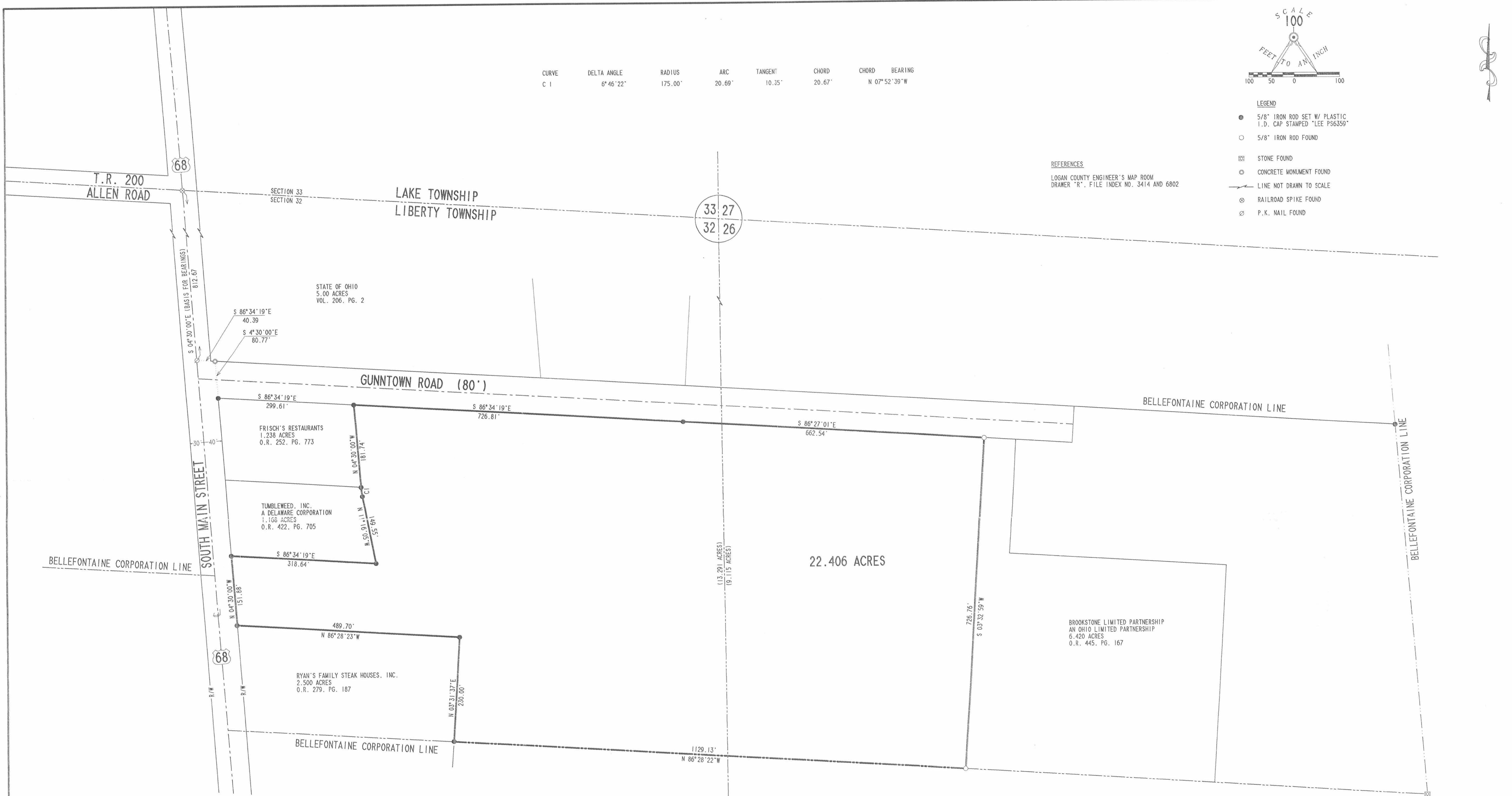


CURVE	DELTA ANGLE	RADIUS	ARC	TANGENT	CHORD	CHORD BEARING
C 1	6°46'22"	175.00'	20.69'	10.35'	20.67'	N 07°52'39"W



- LEGEND**
- 5/8" IRON ROD SET W/ PLASTIC I.D. CAP STAMPED "LEE P56359"
 - 5/8" IRON ROD FOUND
 - ⊞ STONE FOUND
 - ⊙ CONCRETE MONUMENT FOUND
 - LINE NOT DRAWN TO SCALE
 - ⊞ RAILROAD SPIKE FOUND
 - ⊞ P.K. NAIL FOUND

REFERENCES
 LOGAN COUNTY ENGINEER'S MAP ROOM
 DRAWER "R", FILE INDEX NO. 3414 AND 6802



L. DALE ELLEMAN, JR., et al.
 48.31 ACRES
 O.R. 61, PG. 437

SURVEY OF 22.406 ACRES OUT OF THE
 PAUL T. HUMBLE AND JOHN J. ZIESSLER
 ORIGINAL 44.475 ACRE TRACT
 OFFICIAL RECORD 332, PAGE 700
 SECTIONS 32 AND 26, TOWN 4, RANGE 14
 CITY OF BELLEFONTAINE
 LIBERTY TOWNSHIP
 LOGAN COUNTY, OHIO

SURVEYED BY:

 JEFFREY A. LEE
 PROFESSIONAL SURVEYOR 6359
 JANUARY 30, 1996
 MAP PREPARED JUNE 17, 1999
 REVISED APRIL 11, 2000
 COPYRIGHT 2000 BY:
 LEE SURVEYING & MAPPING CO., INC.
 117 North Madriver Street
 BELLEFONTAINE, OHIO 43311
 (937) 593-7335

ORIGINAL STAMP IN GREEN

2 WORKING DAYS
BEFORE YOU DIG
 CALL TOLL FREE 800-362-2764
 OHIO UTILITIES PROTECTION SERVICE.

D 274 ZHREMAN2
 ZHREMAN.DAT L-1371-1

INDEXED ON MAP
 931

ECID 1-18-95 OK gch



Lee Surveying and Mapping Co.



Farm Surveys • Lot Surveys • Topography • Subdivisions • Construction Layout

143 EAST COLUMBUS AVENUE
BELLEFONTAINE, OHIO 43311

(513) 593-7335

JEFFREY I. LEE, P.S.

Z AND H INVESTMENTS 1.405 ACRES

Lying in Section 32, Town 4, Range 14, City of Bellefontaine, Liberty Township, Logan County, Ohio.

Being out of the Z and H Investments, a partnership, 48.31 acre tract as deeded and described in Official Record 248, Page 75 of the Logan County Records of Deeds and being more particularly described as follows:

Beginning at a railroad spike found at the intersection of the north line of said Section 32 and the center-line of South Main Street (U.S. Route 68).

THENCE, with the center-line of South Main Street, S 4°-30'-00" E, a distance of 812.69 feet to a railroad spike set at the TRUE POINT OF BEGINNING.

THENCE, with the south line of the State of Ohio 5.00 acre tract (Vol. 206, Pg. 2), S 86°-34'-19" E, a distance of 340.00 feet to a 5/8 inch iron rod set, passing a concrete right-of-way monument found at 40.39 feet.

THENCE, S 4°-30'-00" E, a distance of 181.74 feet to a 5/8 inch iron rod set.

THENCE, N 86°-34'-19" W, a distance of 340.00 feet to a PK nail set, passing a 5/8 inch iron rod set at 299.61 feet.

THENCE, with the center-line of South Main Street (60 feet wide), N 4°-30'-00" W, a distance of 181.74 feet to the point of beginning.

Containing 1.405 acres of which 0.125 acre is within the highway right-of-way.

The basis for bearings is based upon the center-line of South Main Street being N 4°-30'-00" W, and all other bearings are from angles and distances measured in a field survey by Lee Surveying and Mapping Company on December 29, 1994.

Description prepared by:

Jeffrey I. Lee
Professional Surveyor 6359
January 18, 1995



L 1371

ORIGINAL STAMP IN GREEN

INDEXED ON MAP
93/ 20

REC'D 1-18-95
T.R. 200

SECTION 33
SECTION 32

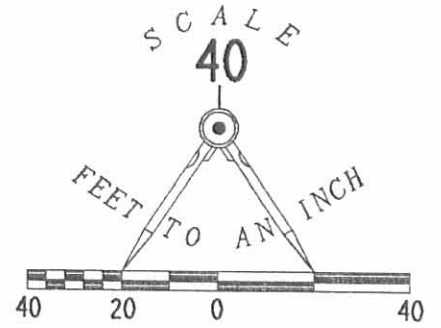
LAKE TOWNSHIP
LIBERTY TOWNSHIP

REFERENCES

LOGAN COUNTY ENGINEERS MAP ROOM.
DRAWER "R". FILE INDEX NUMBERS
3414 AND 6802.

STATE OF OHIO
5 ACRES
VOL. 206, PG. 2

- LEGEND**
- 5/8" IRON ROD SET
 - 5/8" IRON ROD W/ O.D.O.T. I.D. CAP FOUND
 - ⊕ RAILROAD SPIKE SET
 - ⊗ RAILROAD SPIKE FOUND
 - ⊙ CONCRETE MONUMENT FOUND
 - ⊗ PK NAIL SET
 - ✂ LINE NOT DRAWN TO SCALE

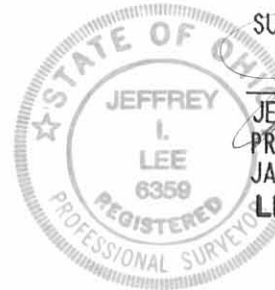


2 WORKING DAYS
BEFORE YOU DIG
CALL TOLL FREE **800-362-2764**
OHIO UTILITIES PROTECTION SERVICE.

BOUNDARY SURVEY
1.405 ACRES OUT OF THE
Z AND H INVESTMENTS
48.31 ACRE TRACT
OFFICIAL RECORD 248, PG. 75
SECTION 32, TOWN 4, RANGE 14
CITY OF BELLEFONTAINE
LIBERTY TOWNSHIP
LOGAN COUNTY, OHIO

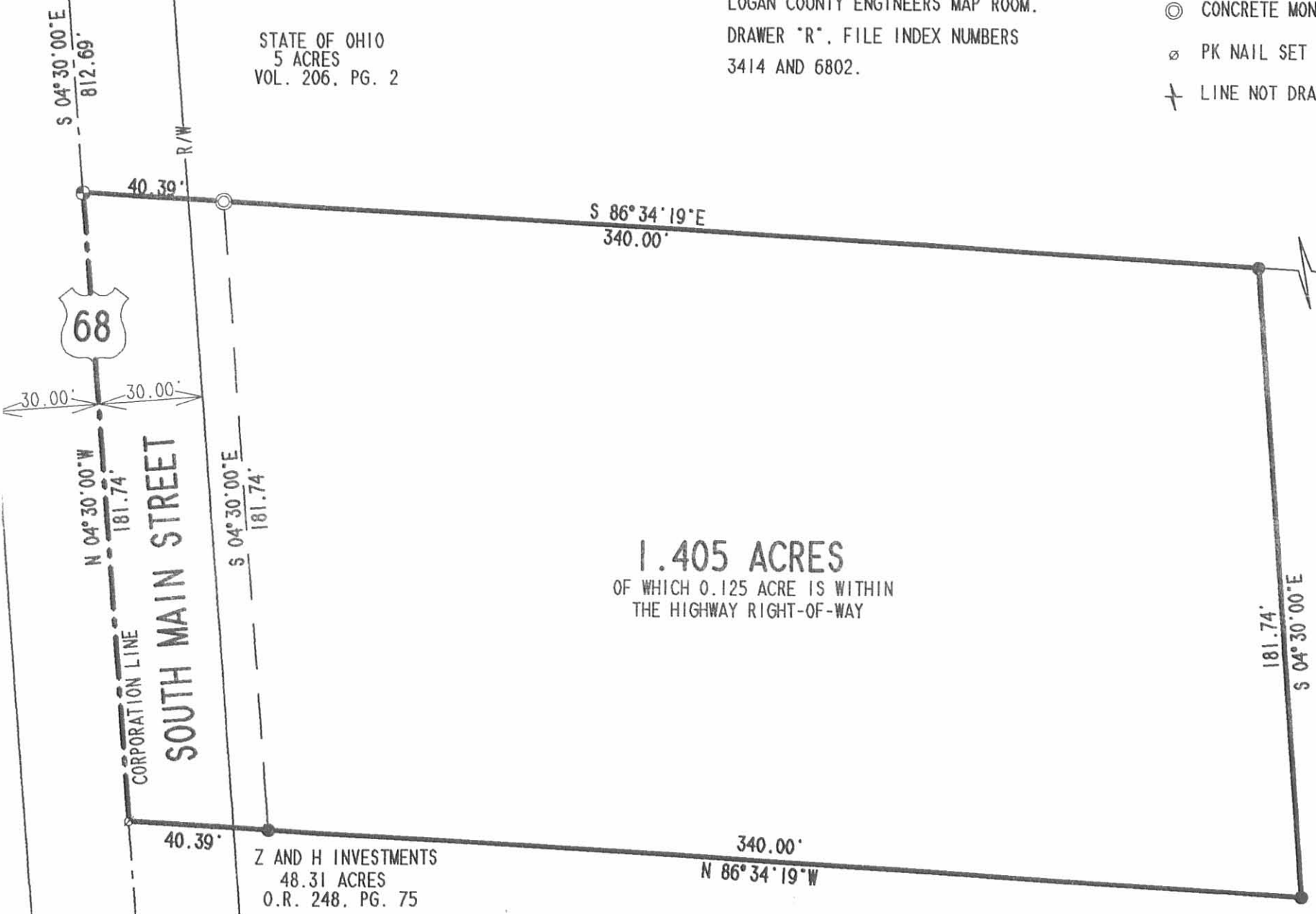
INDEXED ON MAP
931 2P

SURVEYED BY:
Jeffrey I. Lee
JEFFREY I. LEE
PROFESSIONAL SURVEYOR 6359
JANUARY 16, 1995
LEE SURVEYING & MAPPING CO.
143 East Columbus Avenue
BELLEFONTAINE, OHIO 43311
(513) 593-7335



ORIGINAL STAMP IN GREEN

D 240 FRISTOP2 L-1371-1



1.405 ACRES
OF WHICH 0.125 ACRE IS WITHIN
THE HIGHWAY RIGHT-OF-WAY

Z AND H INVESTMENTS
48.31 ACRES
O.R. 248, PG. 75

RECEIVED 6-30-94 SWK @P ✓



Lee Surveying and Mapping Co.



Farm Surveys • Lot Surveys • Topography • Subdivisions • Construction Layout

143 EAST COLUMBUS AVENUE
BELLEFONTAINE, OHIO 43311

(513) 593-7335

JEFFREY I. LEE, P.S.

JAC ZIESSLER 1.623 ACRES

Lying in Section 32, Town 4, Range 14, Liberty Township, Logan County, Ohio.

Being out of the Gene Paul Lantz 48.31 acre tract as deeded and described in Volume 323, Page 242 of the Logan County Records of Deeds and being more particularly described as follows:

Beginning at a railroad spike found at the intersection of the north line of Section 32 and the center-line of U.S. Route 68.

THENCE, with the center-line of U.S. Route 68, S 4°-30'-00" E, a distance of 812.69 feet to a railroad spike set at the TRUE POINT OF BEGINNING.

THENCE, with the south line of the State of Ohio 5.0 acre tract (Vol. 206, Pg. 2), S 86°-34'-19" E, a distance of 340.00 feet to a 5/8 inch iron rod set, passing a concrete monument found at 40.39 feet.

THENCE, S 4°-30'-00" E, a distance of 210.00 feet to a 5/8 inch iron rod set.

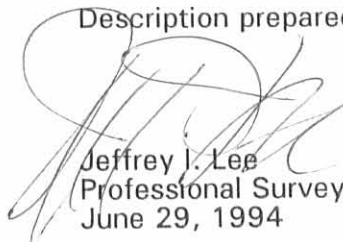
THENCE, N 86°-34'-19" W, a distance of 340.00 feet to a railroad spike set, passing a 5/8 inch iron rod set at 299.61 feet.

THENCE, with the center-line of U.S. Route 68 (60 feet wide right-of-way), N 4°-30'-00" W, a distance of 210.00 feet to the point of beginning.

Containing 1.623 acres of which 0.145 acre is within the present right-of-way of U.S. Route 68.

The basis for bearings is based upon the center-line of U.S. Route 68 being N 4°-30'-00" W, and all other bearings are from angles and distances measured in a field survey by Lee Surveying and Mapping Company on June 18, 1994.

Description prepared by:


Jeffrey I. Lee
Professional Surveyor 6359
June 29, 1994



L 1371

ORIGINAL STAMP IN GREEN

INDEXED ON MAP
931 3D-1

Received 6-30-94 JCH DIC



Lee Surveying and Mapping Co.



Farm Surveys • Lot Surveys • Topography • Subdivisions • Construction Layout

143 EAST COLUMBUS AVENUE
BELLEFONTAINE, OHIO 43311

(513) 593-7335

JEFFREY I. LEE, P.S.

JAC ZIESSLER 30 FEET WIDE DRIVE EASEMENT

Lying in Section 32, Town 4, Range 14, Liberty Township, Logan County, Ohio.

Being an easement reserved for access across and through the above described 1.623 acre tract out of the Gene Paul Lantz 48.31 acre tract as deeded and described in Volume 323, Page 242 of the Logan County Records of Deeds and being more particularly described as follows:

Beginning at a railroad spike found at the intersection of the north line of Section 32 and the center-line of U.S. Route 68.

THENCE, with the center-line of U.S. Route 68, S 4°-30'-00" E, a distance of 812.69 feet to a railroad spike set.

THENCE, with the south line of the State of Ohio 5.0 acre tract (Vol. 206, Pg. 2), S 86°-34'-19" E, a distance of 30.29 feet to a point on the present east right-of-way of U.S. Route 68 and at the TRUE POINT OF BEGINNING.

THENCE, with the south line of the State of Ohio 5.0 acre tract (Vol. 206, Pg. 2), S 86°-34'-19" E, a distance of 309.71 feet to a 5/8 inch iron rod set, passing a concrete monument found at 10.10 feet.

THENCE, S 4°-30'-00" E, a distance of 30.29 feet to a point.

THENCE, N 86°-34'-19" W, a distance of 309.71 feet to a point on the existing right-of-way of U.S. Route 68 (60 feet wide).

THENCE, with the east right-of-way line of U.S. Route 68, N 4°-30'-00" W, a distance of 30.29 feet to the point of beginning.

The basis for bearings is based upon the center-line of U.S. Route 68 being N 4°-30'-00" W, and all other bearings are from angles and distances measured in a field survey by Lee Surveying and Mapping Company on June 18, 1994.

Description prepared by:

Jeffrey I. Lee
Professional Surveyor 6359
June 29, 1994



L 1371

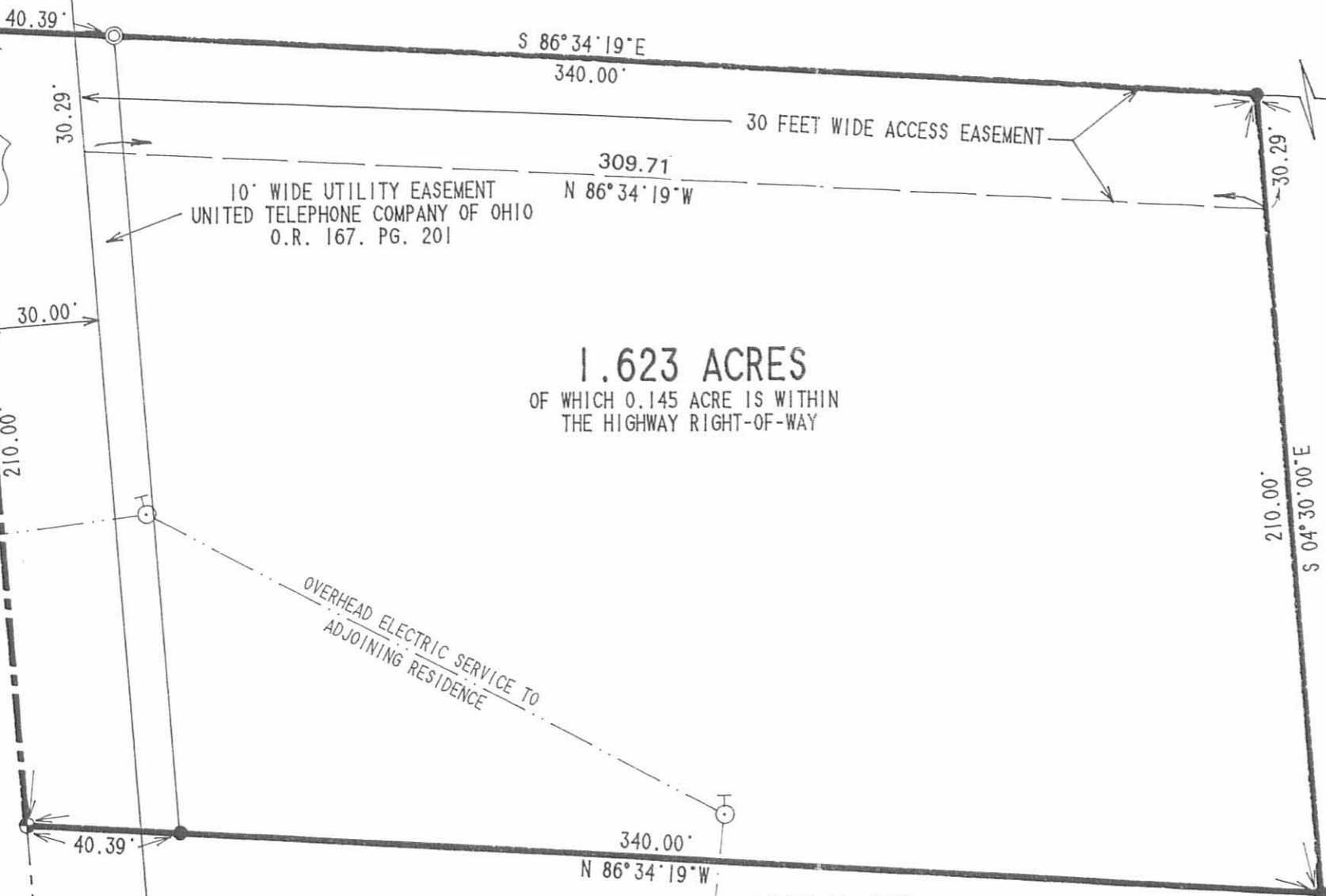
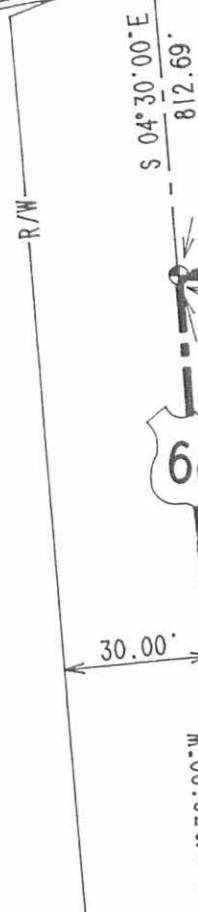
ORIGINAL STAMP IN GREEN

INDEXED ON MAP
931 3D 2

T.R. 200

SECTION 33
SECTION 32 LAKE TOWNSHIP
LIBERTY TOWNSHIP

STATE OF OHIO
5 ACRES
VOL. 206. PG. 2



1.623 ACRES
OF WHICH 0.145 ACRE IS WITHIN
THE HIGHWAY RIGHT-OF-WAY

10' WIDE UTILITY EASEMENT
UNITED TELEPHONE COMPANY OF OHIO
O.R. 167. PG. 201

30 FEET WIDE ACCESS EASEMENT

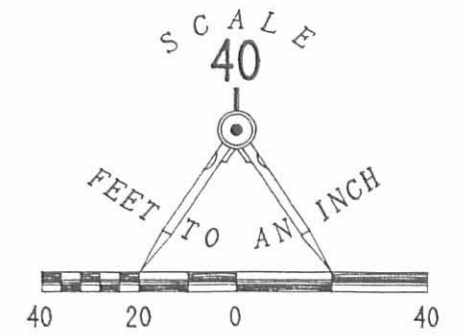
OVERHEAD ELECTRIC SERVICE TO
ADJOINING RESIDENCE

SURVEYOR'S NOTE:

NO TITLE SEARCH HAS BEEN MADE ON THIS
PROPERTY BY LEE SURVEYING AND MAPPING
COMPANY. ADDITIONAL EASEMENTS MAY
AFFECT THIS PROPERTY.

GENE PAUL LANTZ
48.31 ACRES
VOL. 323. PG. 242

INDEXED ON MAP
931 38



LEGEND

- 5/8" IRON ROD SET
- 5/8" IRON ROD W/ O.D.O.T. I.D. CAP FOUND
- ⊕ RAILROAD SPIKE SET
- ⊗ RAILROAD SPIKE FOUND
- ⊙ CONCRETE MONUMENT FOUND
- LINE NOT DRAWN TO SCALE
- ⊖ POWER POLE

REFERENCES

LOGAN COUNTY ENGINEERS MAP ROOM.
DRAWER "R". FILE INDEX NUMBERS
3414 AND 6802.

SURVEY OF 1.623 ACRES OUT OF THE
GENE PAUL LANTZ 48.31 ACRE TRACT
VOLUME 323. PG. 242
SECTION 32. TOWN 4. RANGE 14
LIBERTY TOWNSHIP
LOGAN COUNTY, OHIO



SURVEYED BY:
Jeffrey L. Lee
JEFFREY L. LEE
PROFESSIONAL SURVEYOR 6359
JUNE 18, 1994

LEE SURVEYING & MAPPING CO.
143 East Columbus Avenue
BELLEFONTAINE, OHIO 43311
(513) 593-7335

D 240 FRISH L-1371-3

2 WORKING DAYS
BEFORE YOU DIG
CALL TOLL FREE 800-362-2764
OHIO UTILITIES PROTECTION SERVICE.

(931) 4P

Windsor survey
Liberty Twp
Sec 32 T4 R14

L
W. F. Burkhardt
789¹/₂a

K
B. F. Harmon
789¹/₂a

M. A. Mustain
1607¹/₂a C

I
D. L. Beelmann
6909a

H
H. J. Miller

A
H. J. Miller
8224a

A. H. Windsor

D
John D. Yoder
2856a

Jacob Kenagy
2887a
1027

G
Jacob Kenagy
4115a

889E 68.1
No. 16 1808
22 1/2 1815

6909a

789N 74.8

889E 76.5
889 1/2 174.0

West Liberty and Bellefontaine Pike.
10 1/2 N 198.6 f.

10 1/2 N 174.0 f
N 22 1/2 W 14.00

56 1/2 S 247.0 f

889 1/2 E 12.48

See 32

See 32

See 31

No. 14 5416
11 1/2 1815

80 E 192

N 2 1/2 W 25.50 f

1 ch.

60.0

5.8

12.50

2720

2725

1027

270

2705

4082

7.70

12.64

15.65