

Survey for W.E. Smith

Line "A"

Start from stone in pike N.E. $\frac{1}{4}$ sec. & Smith with road on N. line

Sec. at 16.89 east right of way fence U. B. - T. N. Ry - sub number

at 18.07 center U. B. & N.

" 18.90 $\frac{1}{4}$ " Big # Ry -

S 85 E

at 21.84 corner as found from witness stump

found wild cherry stump with in former survey of Windsor farm (1885)

Set iron bar for NWR $\frac{1}{4}$ sec.

N 21 $\frac{1}{4}$ E 39 lks (25' 9")

from stump

the double maple bearing and dist from north stone N 72 E 89 lks.

Path of Windsor Farm

Feb 22-1906

Set stakes at east line U. B. & N. Right of way in Sec. line

21.84
18.90

2.94

Line "C"

Measured down Big 4 Ry.
at 42.69 set stake in line
north fence Frank Windsor
tract

set pin at 79.40

Ang Ry with N. line Sec -
1 Sec



Line "C"
from \leftarrow stone SW^r Mastain
4.05 to center of Ry

4.05
2.94
1.11

42.69
1.11
42.69
42.69
42.69

79.28) 473859 (59
39640
77459
71352

2.94
30
3.24

35.00
13.83
21.17

42.69
3.24
17076
8538
12807
13.83156

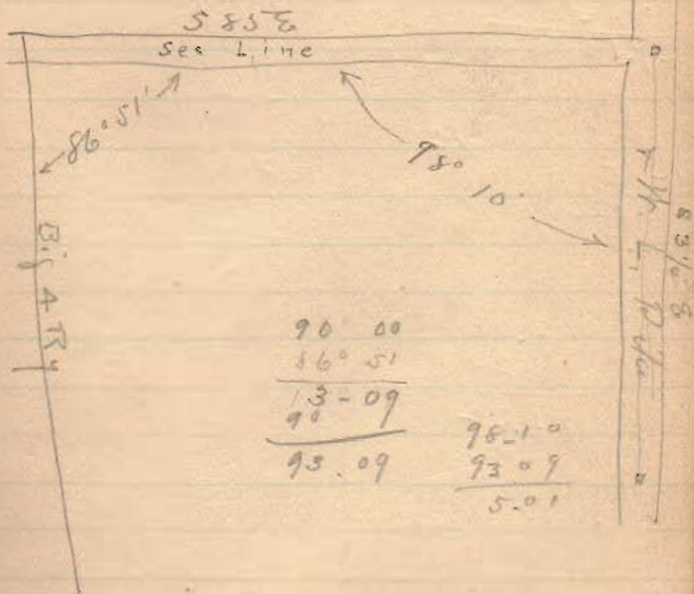
Line "D"

measured from stone S&E Munton
along east line north 34.40 for
Frank Madsen north line
at 34.40 set stake
" 36.59 fence north side Frank
Madsen track

$$\begin{array}{r} 36.59 \\ 42.69 \\ \hline 79.28 \end{array}$$

Line "E"

with B & H. S. Pike
measured from stone at
A. line of Sec found stone
in Miller track at
12.33
S 3/4 E



Calculation for N.E. Smith's 359

359
1383
 2117

5° 1' for 12" = 1.00'

16.89
0.52
 17.42 21.17
 12 21.90
 3484 .27
1742
 20.904

17.42
12.15
 8710
 1742
 3484
1742
 21.16530

16.89
1.05
 17.94) 2.700115
1794
 9060

12

12.15
5
 12.20

12.15
12
 12.27
7
 12.20

12.08
24
 12.32

Lin' E. continued

~~East line of Smith's 21.17 acres
 on file 12.15' line run
 in by staves shown on Miller
 Survey. This corner is 18 lks
 north from stone in road Miller
 Survey set iron bar for <~~

18

Line "P."
Smith's south line
N 85° W
2000



set pipe at 8.97 for center
fence

Correction

I found I had failed to take
into consideration the deflection
from a right angle of $8^{\circ}10'$ in
making the calculation for
Smith's 35 acres.

which would set his line
12 lbs farther south than
now run.

By agreement between Smith
and Detweiler we made
the stow \angle to Miller track
at 12.53 this corner on
the pipe and set the
corner at W & A Refway
at 12.14 - set iron
gas $\frac{3}{4}$ " 6' long.

Bearing of this line N 85° W 17.97

Line "E" (continued)

Measured from stms old <
Miller track and < Smith
& Ditweiler in fike south
with fike

at 66.93 point on bridge in
south line of Sec.

$$66.93 + 12.33 = 79.26$$

Line "F"

On south line Sec from
center fike

at 23.76 east line of Right of way
U. B. & A. Ry.

at 24.98 center U. B. & A. Ry.

" 25.77 1/2 " Beg. A. Ry.

E. 1/2. Sec. 32. T. 4. R. 14.

