

REC'D 8-24-98 SJM OK ✓



Lee Surveying and Mapping Co., Inc.



Land Surveys • Topography • Subdivisions • Construction Layout

117 N. Madriver Street
Bellefontaine OH 43311

Phone: (937) 593-7335
Fax: (937) 593-7444

LAKEVIEW COMMUNITY IMPROVEMENT CORPORATION 0.147 ACRE

Lying in Section 27, Town 6, Range 8, Village of Lakeview, Stokes Township, Logan County, Ohio.

Being out of the Lakeview Community Improvement Corporation original 16.277 acre tract as deeded and described in Official Record 320, Page 82 of the Logan County Records of Deeds and being more particularly described as follows:

Beginning at a P.K. nail with shiner found on the center-line of County Highway 270 at the intersection with the north line of Section 27 and the center-line of Township Road 87, (Duff Road).

THENCE, with the center-line of County Highway 270 (60 feet wide), and the Corporation line of the Village of Lakeview, S 20°-05'-39" E, a distance of 1289.60 feet to a harrow tooth found.

THENCE, continuing with the center-line of County Highway 270, (60 feet wide), and the Corporation line of the Village of Lakeview, S 20°-08'-41" E, a distance of 418.43 feet to a MAG nail set.

THENCE, with the southerly line of the Robert Schaefer 1.432 acre tract, (O.R. 325, Pg. 580), N 69°-51'-19" E, a distance of 280.00 feet to a 5/8 inch iron rod found at the TRUE POINT OF BEGINNING, passing a 5/8 inch iron rod found at 30.00 feet.

THENCE, with the easterly lines of the said 1.432 acre tract, the following two courses:

N 20°-08'-41" E, a distance of 225.00 feet to a 5/8 inch iron rod found.

With a curve to the left having a central angle of 90°-00'-00", a radius of 25.00 feet, an arc length of 39.27 feet, and a chord bearing N 65°-08'-41" W, a distance of 35.36 feet to a 5/8 inch iron rod found.

THENCE, with the northerly line extended of the said 1.432 acre tract, N 69°-51'-19" E, a distance of 50.00 feet to a 5/8 inch iron rod set.

THENCE, S 20°-08'-41" E, a distance of 250.00 feet to a 5/8 inch iron rod set.

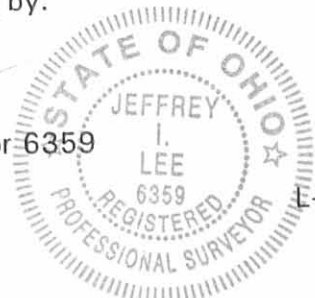
THENCE, S 69°-51'-19" W, a distance of 25.00 feet to the point of beginning.

Containing 0.147 acre.

The basis for bearings is the center-line of County Highway 270 south of the harrow tooth found, being S 20°-08'-41" E, and all other bearings are from angles and distances measured in a field survey by Lee Surveying and Mapping Co., Inc. on August 18, 1998.

Description prepared by:

Jeffrey I. Lee
Professional Surveyor 6359
August 19, 1998



ORIGINAL STAMP IN GREEN

INDEXED ON MAP
9067 4D-1

Received 8-20-98 OKJCH



Lee Surveying and Mapping Co., Inc.



Land Surveys • Topography • Subdivisions • Construction Layout

117 N. Madriver Street
Bellefontaine OH 43311

Phone: (937) 593-7335
Fax: (937) 593-7444

LAKEVIEW COMMUNITY IMPROVEMENT CORPORATION 0.956 ACRE

Lying in Section 27, Town 6, Range 8, Village of Lakeview, Stokes Township, Logan County, Ohio.

Being out of the Lakeview Community Improvement Corporation original 16.277 acre tract as deeded and described in Official Record 320, Page 82 of the Logan County Records of Deeds and being more particularly described as follows:

Beginning at a P.K. nail with shiner found on the center-line of County Highway 270 at the intersection with the north line of Section 27 and the center-line of Township Road 87, (Duff Road).

THENCE, with the center-line of County Highway 270, (60 feet wide), and the Corporation line of the Village of Lakeview, S 20°-05'-39" E, a distance of 1289.60 feet to a harrow tooth found.

THENCE, continuing with the center-line of County Highway 270 and the Corporation line of the Village of Lakeview S 20°-08'-41" E, a distance of 83.43 feet to a MAG nail set.

THENCE, N 69°-51'-19" E, a distance of 30.00 feet to a 5/8 inch iron rod set on the easterly right-of-way of County Highway 270.

THENCE, with a curve to the left having a central angle of 90°-00'-00", a radius of 25.00 feet, an arc length of 39.27 feet, and a chord bearing S 65°-08'-41" E, a distance of 35.36 feet to a 5/8 inch iron rod set.

THENCE, N 69°-51'-19" E, a distance of 180.00 feet to a 5/8 inch iron rod set.

THENCE, with a curve to the left having a central angle of 53°-07'-40", a radius of 50.00 feet, an arc length of 46.36 feet, and a chord bearing N 43°-17'-21" E, a distance of 44.72 feet to a 5/8 inch iron rod set.

THENCE, with a curve to the right having a central angle of 103°-09'-35", a radius of 50.00 feet and an arc length of 90.02 feet, and a chord bearing N 68°-18'-17" E, a distance of 78.35 feet to a 5/8 inch iron rod set at the TRUE POINT OF BEGINNING.

THENCE, N 29°-53'-07" E, a distance of 60.00 feet to a 5/8 inch iron rod set.

THENCE, N 69°-51'-19" E, a distance of 120.00 feet to a 5/8 inch iron rod set.

THENCE, N 20°-08'-41" W, a distance of 60.00 feet to a 5/8 inch iron rod set.

THENCE, N 69°-51'-19" E, a distance of 120.26 feet to a 5/8 inch iron rod set.

THENCE, within the right-of-way of U.S. Route 33 and with an easterly Village of Lakeview Corporation Line, S 19°-48'-30" E, a distance of 199.28 feet to a 5/8 inch iron rod set.

THENCE, S 69°-51'-19" W, a distance of 119.09 feet to a 5/8 inch iron rod set.

THENCE, N 20°-08'-41" W, a distance of 20.00 feet to a 5/8 inch iron rod set.

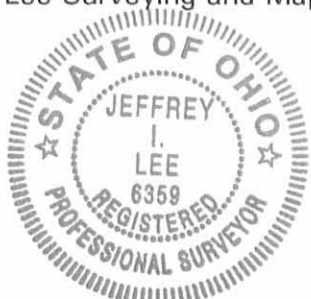
THENCE, S 69°-51'-19" W, a distance of 120.00 feet to a 5/8 inch iron rod set.

THENCE, N 80°-10'-26" W, a distance of 47.31 feet to a 5/8 inch iron rod set.

THENCE, with a curve to the left having a central angle of 69°-56'-10", a radius of 50.00 feet, an arc length of 61.03 feet, and a chord bearing N 25°-08'-40" W, a distance of 57.32 feet to the point of beginning.

Containing 0.956 acre.

The basis for bearings is the center-line of County Highway 270 south of the harrow tooth found, being S 20°-08'-41" E, and all other bearings are from angles and distances measured in a field survey by Lee Surveying and Mapping Co., Inc. on August 18, 1998.

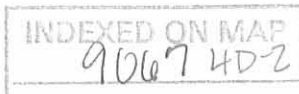


ORIGINAL STAMP IN GREEN

Description prepared by:

Jeffrey I. Lee
Jeffrey I. Lee
Professional Surveyor 6359
August 19, 1998

L-2369



Received 8-20-98 AK



Lee Surveying and Mapping Co., Inc.



Land Surveys • Topography • Subdivisions • Construction Layout

117 N. Madriver Street
Bellefontaine OH 43311

Phone: (937) 593-7335
Fax: (937) 593-7444

LAKEVIEW COMMUNITY IMPROVEMENT CORPORATION 0.753 ACRE

Lying in Section 27, Town 6, Range 8, Village of Lakeview, Stokes Township, Logan County, Ohio.

Being out of the Lakeview Community Improvement Corporation original 16.277 acre tract as deeded and described in Official Record 320, Page 82 of the Logan County Records of Deeds and being more particularly described as follows:

Beginning at a P.K. nail with shiner found on the center-line of County Highway 270 at the intersection with the north line of Section 27 and the center-line of Township Road 87, (Duff Road).

THENCE, with the center-line of County Highway 270 (60 feet wide), and the Corporation line of the Village of Lakeview, S 20°-05'-39" E, a distance of 1289.60 feet to a harrow tooth found.

THENCE, continuing with the center-line of County Highway 270 and the Corporation line of the Village of Lakeview S 20°-08'-41" E, a distance of 83.43 feet to a MAG nail set at the TRUE POINT OF BEGINNING.

THENCE, N 69°-51'-19" E, a distance of 30.00 feet to a 5/8 inch iron rod set on the easterly right-of-way of County Highway 270.

THENCE, with a curve to the left having a central angle of 90°-00'-00", a radius of 25.00 feet, an arc length of 39.27 feet, and a chord bearing S 65°-08'-41" E, a distance of 35.36 feet to a 5/8 inch iron rod set.

THENCE, N 69°-51'-19" E, a distance of 180.00 feet to a 5/8 inch iron rod set.

THENCE, with a curve to the left having a central angle of 53°-07'-40", a radius of 50.00 feet, an arc length of 46.36 feet, and a chord bearing N 43°-17'-21" E, a distance of 44.72 feet to a 5/8 inch iron rod set.

THENCE, with a curve to the right having a central angle of 234°-48'-35", a radius of 50.00 feet and an arc length of 204.90 feet to a 5/8 inch iron rod set.

THENCE, with the lines of the Robert Schaefer 1.432 acre tract, (O.R. 325, Pg. 580), and said line extended, the following three courses:

S 69°-51'-19" W, a distance of 279.98 feet to a 5/8 inch iron rod found, passing 5/8 inch iron rods set at 10.00 feet and a 5/8 inch iron rod found at 60.00 feet.

With a curve to the left having a central angle of 11°-34'-52", a radius of 25.00 feet, an arc length of 5.05 feet, and a chord bearing S 64°-03'-53" W, a distance of 5.04 feet to a 5/8 inch iron rod found on the easterly right-of-way of County Highway 270.

With the easterly right-of-way of County Highway 270, S 20°-08'-41" E, a distance of 249.49 feet to a 5/8 inch iron rod found.

THENCE, S 69°-51'-19" W, a distance of 30.00 feet to a MAG nail set on the center-line of County Highway 270.

THENCE, with the center-line of County Highway 270 and the Corporation line of the Village of Lakeview N 20°-08'-41" W, a distance of 335.00 feet to the point of beginning.

Containing 0.753 acre, of which 0.231 acre is within the highway right-of-way.

The basis for bearings is the center-line of County Highway 270 south of the harrow tooth found, being S 20°-08'-41" E, and all other bearings are from angles and distances measured in a field survey by Lee Surveying and Mapping Co., Inc. on August 18, 1998.



ORIGINAL STAMP IN GREEN

Description prepared by:

Jeffrey I. Lee
Professional Surveyor 6359
August 19, 1998

L-2369

INDEXED ON MAP
90674D-3

REC'D 8-24-98 SMM OK ✓



Lee Surveying and Mapping Co., Inc.



Land Surveys • Topography • Subdivisions • Construction Layout

117 N. Madriver Street
Bellefontaine OH 43311

Phone: (937) 593-7335
Fax: (937) 593-7444

LAKEVIEW COMMUNITY IMPROVEMENT CORPORATION 1.659 ACRE TRACT 7

Lying in Section 27, Town 6, Range 8, Village of Lakeview, Stokes Township, Logan County, Ohio.

Being out of the Lakeview Community Improvement Corporation original 16.277 acre tract as deeded and described in Official Record 320, Page 82 of the Logan County Records of Deeds and being more particularly described as follows:

Beginning at a P.K. nail with shiner found on the center-line of County Highway 270 at the intersection with the north line of Section 27 and the center-line of Township Road 87, (Duff Road).

THENCE, with the center-line of County Highway 270 (60 feet wide), and the Corporation line of the Village of Lakeview, S 20°-05'-39" E, a distance of 1289.60 feet to a harrow tooth found.

THENCE, continuing with the center-line of County Highway 270 and the Corporation line of the Village of Lakeview S 20°-08'-41" E, a distance of 418.43 feet to a MAG nail set at the TRUE POINT OF BEGINNING.

THENCE, with the southerly line of the Robert Schaefer 1.432 acre tract, (O.R. 325, Pg. 580), N 69°-51'-19" E, a distance of 305.00 feet to a 5/8 inch iron rod set, passing 5/8 inch iron rods found at 30.00 feet and 280.00 feet.

THENCE, S 20°-08'-41" E, a distance of 237.00 feet to a 5/8 inch iron rod set.

THENCE, with the northerly line of the remainder of the Village of Lakeview original 29.615 acre tract, (O.R. 255, Pg. 801) and the southerly line of the Lakeview Community Improvement Corporation said 16.277 acre tract, S 69°-51'-19" W, a distance of 305.00 feet to a P.K. nail found on the center-line of County Highway 270 and the Corporation line of the Village of Lakeview passing a 5/8 inch iron rod found at 275.00 feet.

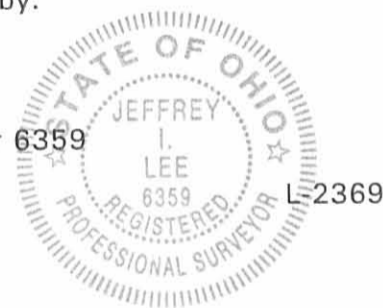
THENCE, with the center-line of County Highway 270 and the Corporation line of the Village of Lakeview N 20°-08'-41" W, a distance of 237.00 feet to the point of beginning.

Containing 1.659 acre, of which 0.163 acre is within the highway right-of-way.

The basis for bearings is the center-line of County Highway 270 south of the harrow tooth found, being S 20°-08'-41" E, and all other bearings are from angles and distances measured in a field survey by Lee Surveying and Mapping Co., Inc. on August 18, 1998.

Description prepared by:

Jeffrey I. Lee
Professional Surveyor 6359
August 19, 1998



ORIGINAL STAMP IN GREEN

INDEXED ON MAP
9067 4D-4

Received 8-20-98 OKJCH



Lee Surveying and Mapping Co., Inc.



Land Surveys • Topography • Subdivisions • Construction Layout

117 N. Madriver Street
Bellefontaine OH 43311

Phone: (937) 593-7335
Fax: (937) 593-7444

LAKEVIEW COMMUNITY IMPROVEMENT CORPORATION 3.685 ACRE TRACT 5

Lying in Section 27, Town 6, Range 8, Village of Lakeview, Stokes Township, Logan County, Ohio.

Being out of the Lakeview Community Improvement Corporation original 16.277 acre tract as deeded and described in Official Record 320, Page 82 of the Logan County Records of Deeds and being more particularly described as follows:

Beginning at a P.K. nail with shiner found on the center-line of County Highway 270 at the intersection with the north line of Section 27 and the center-line of Township Road 87, (Duff Road).

THENCE, with the center-line of County Highway 270 (60 feet wide), and the Corporation line of the Village of Lakeview, S 20°-05'-39" E, a distance of 1289.60 feet to a harrow tooth found.

THENCE, continuing with the center-line of County Highway 270 and the Corporation line of the Village of Lakeview S 20°-08'-41" E, a distance of 655.43 feet to a MAG nail found.

THENCE, with the northerly line of the remainder of the Village of Lakeview original 29.615 acre tract, (O.R. 255, Pg. 801) and with the south line of the said Lakeview Community Improvement Corporation original 16.277 acre tract, N 69°-51'-19" E, a distance of 305.00 feet to a 5/8 inch iron rod set at the TRUE POINT OF BEGINNING, passing a 5/8 inch iron rod found at 30.00 feet

THENCE, N 20°-08'-41" W, a distance of 487.00 feet to a 5/8 inch iron rod set, passing a 5/8 inch iron rod set at 237.00 feet.

THENCE, N 69°-51'-19" E, a distance of 10.00 feet to a 5/8 inch iron rod set.

THENCE, with a curve to the left having a central angle of 60°-43'-46", a radius of 50.00 feet, an arc length of 53.00 feet, and a chord bearing N 40°-11'-17" E, a distance of 50.55 feet to a 5/8 inch iron rod set.

THENCE, S 80°-10'-26" E, a distance of 47.31 feet to a 5/8 inch iron rod set.

THENCE, N 69°-51'-19" E, a distance of 120.00 feet to a 5/8 inch iron rod set.

THENCE, S 20°-08'-41" E, a distance of 20.00 feet to a 5/8 inch iron rod set.

THENCE, N 69°-51'-19" E, a distance of 119.09 feet to a 5/8 inch iron rod set.

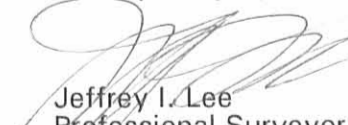
THENCE, within the right-of-way of U.S. Route 33 and an easterly Village of Lakeview Corporation Line, S 19°-48'-30" E, a distance of 468.39 feet to a 5/8 inch iron rod found.

THENCE, with the northerly line of the remainder of the said original 29.615 acre tract and the south line of the said 16.277 acre tract, S 69°-51'-19" W, a distance of 330.64 feet to the point of beginning, passing a 5/8 inch iron rod found at 40.00 feet.

Containing 3.685 acre.

The basis for bearings is the center-line of County Highway 270 south of the harrow tooth found, being S 20°-08'-41" E, and all other bearings are from angles and distances measured in a field survey by Lee Surveying and Mapping Co., Inc. on August 18, 1998.

Description prepared by:


Jeffrey I. Lee
Professional Surveyor 6359
August 19, 1998



ORIGINAL STAMP IN GREEN

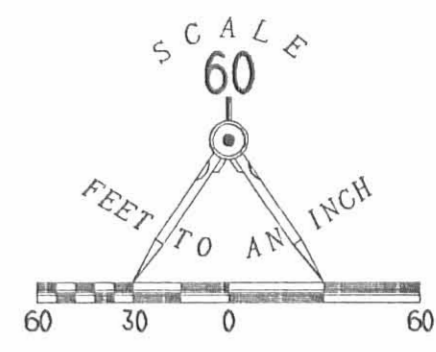
L-2369

INDEXED ON MAP
9067 40-5

TOWNSHIP ROAD 87

DUFF ROAD

SECTION 22
SECTION 27



LEGEND

- 5/8" IRON ROD SET
- 5/8" IRON ROD FOUND
- ⊙ MAG NAIL SET
- ⊗ HARROW TOOTH FOUND
- ⊙ P.K. NAIL FOUND WITH SHINER
- MAG NAIL FOUND

REFERENCES

LOGAN COUNTY ENGINEER'S FILES:
O.K.S. FIELD BOOK 13, PG. 63
FIELD BOOK 705, PG. 33
FIELD BOOK 572, PAGES 36-39
S.H. 168 RELOCATION PLAN
PAGES 9 & 10 OF 11
R-7714, R-6981, R-5960

SURVEY OF FIVE TRACTS OUT OF THE
LAKEVIEW COMMUNITY IMPROVEMENT CORPORATION
ORIGINAL 16.277 ACRE TRACT
OFFICIAL RECORD 320, PAGE 82
SECTION 27, TOWN 6, RANGE 8
VILLAGE OF LAKEVIEW
STOKES TOWNSHIP
LOGAN COUNTY, OHIO

LAKEVIEW COMMUNITY IMPROVEMENT CORPORATION
16.277 ACRES
OFFICIAL RECORD 320, PAGE 82

0.956 ACRE

0.753 ACRE
0.231 AC IS IN THE HIGHWAY
RIGHT-OF-WAY 219.98'

0.147 ACRE

ROBERT SCHAEFER AND
BONNIE SCHAEFER
1.432 ACRES
O.R. 325, PG. 580

TRACT 5
3.685 ACRES

TRACT 7
1.659 ACRES
0.163 AC IS IN THE HIGHWAY
RIGHT-OF-WAY

VILLAGE OF LAKEVIEW
ORIG. 29.615 ACRES
O.R. 255, PG. 801

CURVE	DELTA ANGLE	RADIUS	ARC	TANGENT	CHORD	CHORD BEARING
C 1	90°00'00"	25.00'	39.27'	25.00'	35.36'	S 65°08'41"E
C 2	53°07'40"	50.00'	46.36'	25.00'	44.72'	N 43°17'21"E
C 3	234°48'35"	50.00'	204.90'			
C 4	11°34'52"	25.00'	5.05'	2.54'	5.04'	S 64°03'53"W
C 5	103°09'35"	50.00'	90.02'	63.04'	78.35'	N 68°18'17"E
C 6	69°56'10"	50.00'	61.03'	34.97'	57.32'	N 25°08'40"W
C 7	60°43'46"	50.00'	53.00'	29.30'	50.55'	N 40°11'17"E
C 8	90°00'00"	25.00'	39.27'	25.00'	35.36'	N 65°08'41"W

2 WORKING DAYS
BEFORE YOU DIG
CALL TOLL FREE 800-362-2764
OHIO UTILITIES PROTECTION SERVICE



SURVEYED BY:
Jeffrey L. Lee
JEFFREY L. LEE
PROFESSIONAL SURVEYOR 6359
AUGUST 18, 1998
COPYRIGHT 1998 BY:
LEE SURVEYING & MAPPING CO., INC.
117 North Madison Street
BELLEFONTAINE, OHIO 43311
(937) 593-7335
D 331 LAKYIND4
LAKEVIEW.DAT

ORIGINAL STAMP IN GREEN



INDEXED ON MAP
906748



REC'D 4-16-97 8M OK 907

Lee Surveying and Mapping Co., Inc.



Farm Surveys • Lot Surveys • Topography • Subdivisions • Construction Layout

117 NORTH MADRIVER STREET
BELLEFONTAINE, OHIO 43311

(937) 593-7335
FAX (937) 593-7444

COMMUNITY INDUSTRIAL COUNCIL VILLAGE OF LAKEVIEW 1.432 ACRES

Lying in Section 27, Town 6, Range 8, Village of Lakeview, Stokes Township, Logan County, Ohio.

Being out of the Lakeview Community Improvement Corporation 16.277 acre tract as deeded and described in Official Record 320, Page 82 of the Logan County Records of Deeds and being more particularly described as follows:

Beginning at a railroad spike set at the southwest corner of the Ben B. Pile 1.13 acre tract (Vol. 396, Pg. 313) and on the center-line of County Highway 270 (60 feet wide).

THENCE, with the center-line of County Highway 270, S 20°-05'-39" E, a distance of 381.60 feet to a harrow tooth set.

THENCE, with the center-line of County Highway 270, S 20°-08'-41" E, a distance of 168.94 feet to a MAG nail set.

THENCE, N 69°-51'-19" E, a distance of 30.00 feet to a 5/8 inch iron rod set on the right-of-way of County Highway 270 and the TRUE POINT OF BEGINNING.

THENCE, with a non-tangent curve to the right having a central angle of 11°-34'-52", a radius of 25.00 feet, an arc length of 5.05 feet, and having a chord bearing N 64°-03'-53" E, a distance of 5.04 feet to a 5/8 inch iron rod set.

THENCE, N 69°-51'-19" E, a distance of 219.98 feet to a 5/8 inch iron rod set.

THENCE, with a curve to the right having a central angle of 90°-00'-00", a radius of 25.00 feet, an arc length of 39.27 feet, and having a chord bearing S 65°-08'-42" E, a distance of 35.36 feet to a 5/8 inch iron rod set.

THENCE, S 20°-08'-41" E, a distance of 225.00 feet to a 5/8 inch iron rod set.

THENCE, S 69°-51'-19" W, a distance of 250.00 feet to a 5/8 inch iron rod set.

THENCE, with the easterly right-of-way of County Highway 270, N 20°-08'-41" W, a distance of 249.49 feet to the point of beginning.

Containing 1.432 acres.

The basis for bearings is the east line of the 16.277 acre tract being S 19°-48'-30" E, and all other bearings are from angles and distances measured in a field survey by Lee Surveying and Mapping Co., Inc. on February 17, 1997.

Description prepared by:

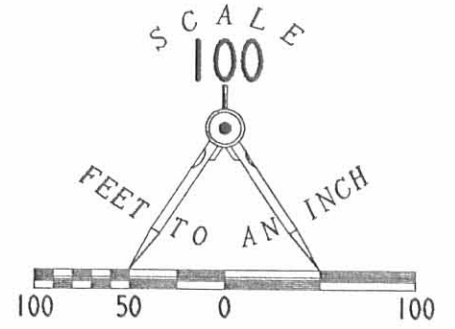
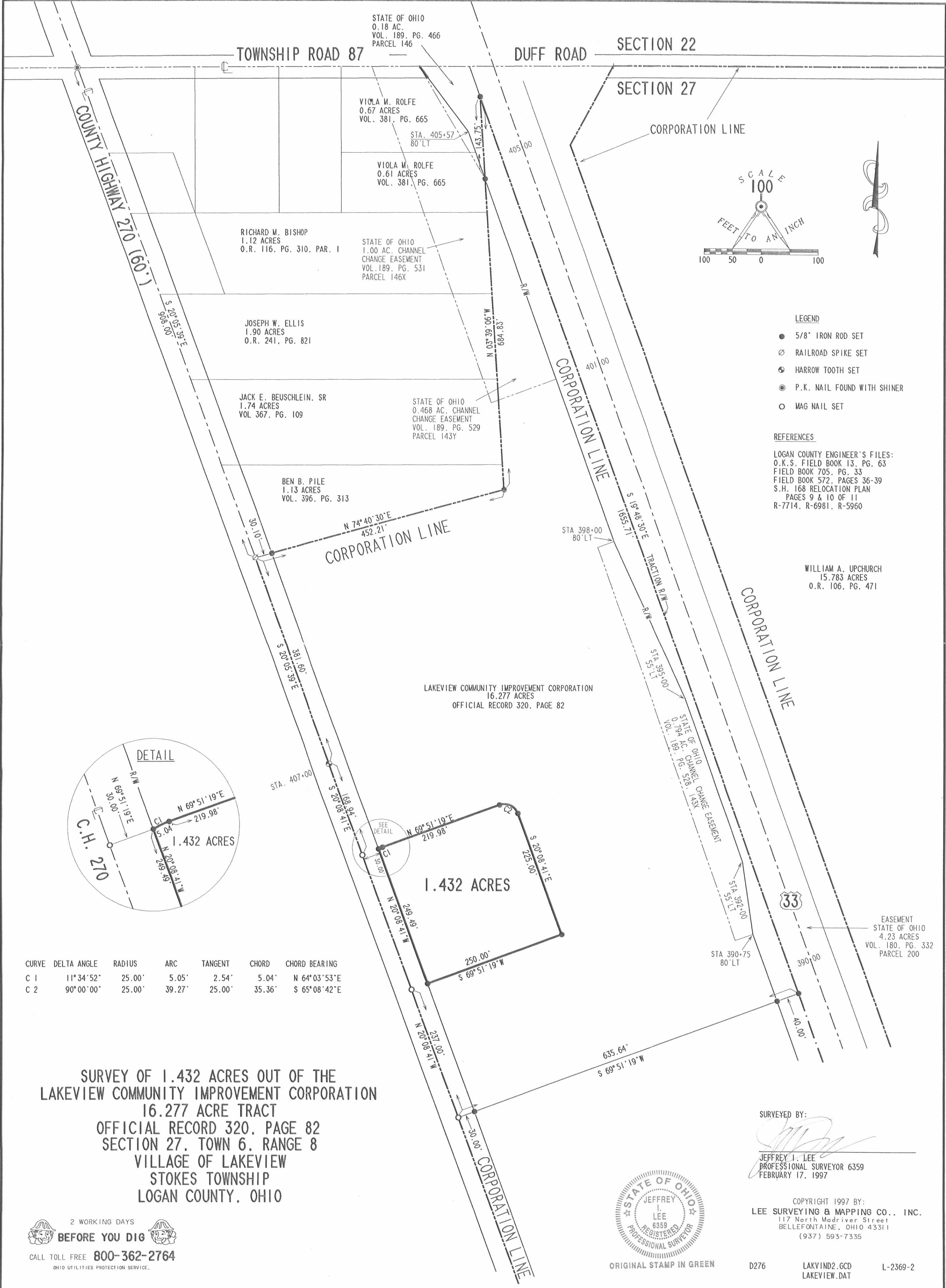
Jeffrey I. Lee
Professional Surveyor 6359
February 28, 1997
Revised April 15, 1997



L 2369

ORIGINAL STAMP IN GREEN

INDEXED ON MAP
9067 5D



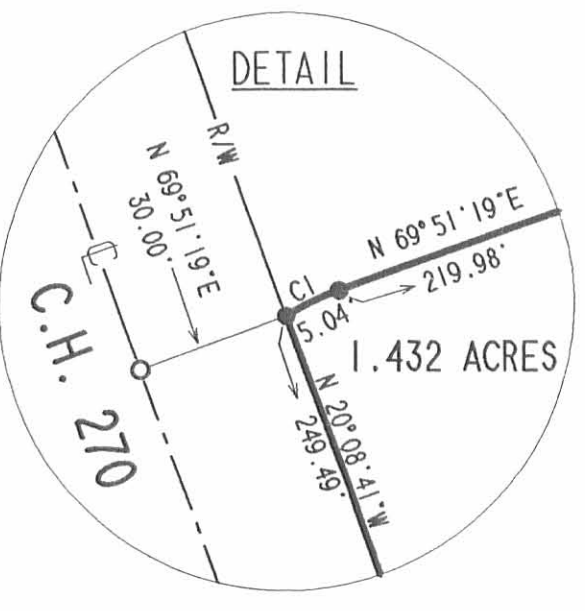
- LEGEND**
- 5/8" IRON ROD SET
 - ⊙ RAILROAD SPIKE SET
 - ⊕ HARROW TOOTH SET
 - ⊙ P.K. NAIL FOUND WITH SHINER
 - MAG NAIL SET

REFERENCES

LOGAN COUNTY ENGINEER'S FILES:
 O.K.S. FIELD BOOK 13, PG. 63
 FIELD BOOK 705, PG. 33
 FIELD BOOK 572, PAGES 36-39
 S.H. 168 RELOCATION PLAN
 PAGES 9 & 10 OF 11
 R-7714, R-6981, R-5960

WILLIAM A. UPCHURCH
 15.783 ACRES
 O.R. 106, PG. 471

LAKEVIEW COMMUNITY IMPROVEMENT CORPORATION
 16.277 ACRES
 OFFICIAL RECORD 320, PAGE 82



CURVE	DELTA ANGLE	RADIUS	ARC	TANGENT	CHORD	CHORD BEARING
C 1	11° 34' 52"	25.00'	5.05'	2.54'	5.04'	N 64° 03' 53" E
C 2	90° 00' 00"	25.00'	39.27'	25.00'	35.36'	S 65° 08' 42" E

**SURVEY OF 1.432 ACRES OUT OF THE
 LAKEVIEW COMMUNITY IMPROVEMENT CORPORATION
 16.277 ACRE TRACT
 OFFICIAL RECORD 320, PAGE 82
 SECTION 27, TOWN 6, RANGE 8
 VILLAGE OF LAKEVIEW
 STOKES TOWNSHIP
 LOGAN COUNTY, OHIO**

SURVEYED BY:

 JEFFREY I. LEE
 PROFESSIONAL SURVEYOR 6359
 FEBRUARY 17, 1997



COPYRIGHT 1997 BY:
LEE SURVEYING & MAPPING CO., INC.
 117 North Madriver Street
 BELLEFONTAINE, OHIO 43311
 (937) 593-7335

2 WORKING DAYS
BEFORE YOU DIG
 CALL TOLL FREE 800-362-2764
 OHIO UTILITIES PROTECTION SERVICE

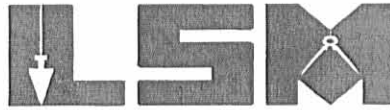
INDEXED ON MAP
 9067 BR

REC'D 2-13-03 SUM OK

Lee Surveying and Mapping Co., Inc.

Land Surveys • Topography • Subdivisions • Construction Layout

117 N. Madriver St.
Bellefontaine OH 43311



Phone: (937) 593-7335
Fax: (937) 593-7444

COMMUNITY STORAGE AND PROPERTIES, LTD. 1.471 ACRES

Lying in Section 27, Town 6, Range 8, Village of Lakeview, Stokes Township, Logan County, Ohio.

Being out of the Community Storage and Properties, Ltd., 7.325 acre tract as deeded and described in Official Record 612, Page 256, Tract I, of the Logan County Records of Deeds and being more particularly described as follows:

Beginning at a P.K. nail with shiner found on the center-line of County Highway 270 (60 feet wide) at the intersection with the north line of Section 27 and the center-line of Township Road 87, (Duff Road).

THENCE, with the center-line of County Highway 270, S 20°-05'-39" E, a distance of 908.00 feet to a harrow tooth found.

THENCE, with the south line of the Ben B. Pile 1.13 acre tract (Vol. 396, Pg. 313), N 74°-40'-30" E, a distance of 452.21 feet to a 5/8 inch iron rod found at the TRUE POINT OF BEGINNING.

THENCE, with the east line of the 1.13 acre tract, the Jack E. Beuschlein, II, 1.74 acre tract (O.R. 605, Pg. 414), the Kyle D. Shaner 1.90 acre tract (O.R. 593, Pg. 703), the Richard M. Bishop 1.12 acre tract (O.R. 116, Pg. 310, Par. 1) and the Charles Calvin Stannard 0.61 acre tract (O.R. 490, Pg. 336), and the Village of Lakeview Corporation Line, N 3°-39'-06" W, a distance of 684.83 feet to a 5/8 inch iron rod found, passing a 5/8 inch iron rod found at 541.08 feet.

THENCE, within the right-of-way of U.S. Route 33 and an easterly Village of Lakeview Corporation Line, S 19°-48'-30" E, a distance of 672.72 feet to a 5/8 inch iron rod set.

THENCE, S 74°-40'-30" W, a distance of 191.15 feet to the point of beginning.

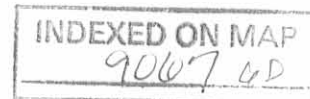
Containing 1.471 acre, of which 0.557 acre is within the righty-of-way of U.S. Route 33.

The basis for bearings is the center-line of County Highway 270, being S 20°-05'-39" E, and all other bearings are from angles and distances measured in a field survey by Lee Surveying and Mapping Co., Inc. on January 17, 2003.

Description prepared by:



Jeffrey I. Lee
Jeffrey I. Lee
Professional Surveyor 6359
February 8, 2003



L-2369

REC'D 2-13-03 SWY OK

TOWNSHIP ROAD 87

DUFF ROAD

SECTION 22

SECTION 27

REFERENCES

LOGAN COUNTY ENGINEER'S FILES:
O.K.S. FIELD BOOK 13, PG. 63
FIELD BOOK 705, PG. 33
FIELD BOOK 572, PAGES 36-39
S.H. 168 RELOCATION PLAN
PAGES 9 & 10 OF 11
R-7714, R-6981, R-5960

CHARLES CALVIN STANNARD
0.67 ACRES
O.R. 490, PG. 336

CHARLES CALVIN STANNARD
0.61 ACRES
O.R. 490, PG. 336

RICHARD M. BISHOP
1.12 ACRES
O.R. 116, PG. 310, PAR. 1

KYLE D. SHANER
1.90 ACRES
O.R. 593, PG. 703

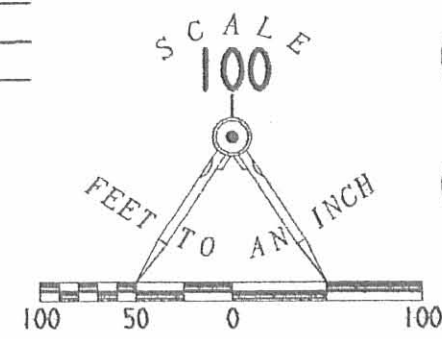
JACK E. BEUSCHLEIN, II
1.74 ACRES
O.R. 605, PG. 414

BEN B. PILE
1.13 ACRES
VOL. 396, PG. 313

COMMUNITY STORAGE
AND PROPERTIES, LTD
7.325 ACRES
OFFICIAL RECORD 612, PAGE 256
TRACT I

LEGEND

- 5/8" IRON ROD SET
- 5/8" IRON ROD FOUND
- ⊕ MAG NAIL SET
- ⊗ HARROW TOOTH FOUND
- ⊙ P.K. NAIL FOUND WITH SHINER
- MAG NAIL FOUND



SURVEY OF 1.471 ACRES OUT OF THE
COMMUNITY STORAGE AND PROPERTIES, LTD
7.325 ACRE TRACT
OFFICIAL RECORD 612, PAGE 256, TRACT I
SECTION 27, TOWN 6, RANGE 8
VILLAGE OF LAKEVIEW
STOKES TOWNSHIP
LOGAN COUNTY, OHIO



ORIGINAL STAMP IN GREEN

SURVEYED BY:

Jeffrey I. Lee
JEFFREY I. LEE
PROFESSIONAL SURVEYOR 6359
JANUARY 17, 2003

COPYRIGHT 2003 BY:

LEE SURVEYING & MAPPING CO., INC.
117 North Madriver Street
BELLEFONTAINE, OHIO 43311
(937) 593-7335

D 331 LAKVIND7
LAKEVIEW.DAT

L-2369-1

COUNTY HIGHWAY 270 (60')
(BASIS FOR BEARINGS)
20° 05' 36" E
908.00'

1.471 ACRES
OF WHICH 0.557 ACRE IS
IN THE HIGHWAY RIGHT-OF-WAY

20' WATER LINE EASEMENT
N 74° 40' 30" E 452.21'
CORPORATION LINE
20' WATER LINE EASEMENT
LINE EASEMENT

2 WORKING DAYS
BEFORE YOU DIG
CALL TOLL FREE 800-362-2764
OHIO UTILITIES PROTECTION SERVICE.

INDEXED ON MAP
90676P

REC'D 8-7-98 SMY OK ✓



Lee Surveying and Mapping Co., Inc.

Land Surveys • Topography • Subdivisions • Construction Layout

Phone: (937) 593-7335

Fax: (937) 593-7444

117 N. Madriver Street
Bellefontaine OH 43311

LAKEVIEW COMMUNITY IMPROVEMENT CORPORATION 30 FEET WIDE WATER EASEMENT

Lying in Section 27, Town 6, Range 8, Village of Lakeview, Stokes Township, Logan County, Ohio.

Being over the Lakeview Community Improvement Corporation original 16.277 acre tract as deeded and described in Official Record 320, Page 82 of the Logan County Records of Deeds and being more particularly described as follows:

Being a 30 feet wide easement centered 15 feet at right angles south and east of the following described line:

Beginning at a harrow tooth set on the center-line of County Highway 270, (60 feet wide) at the southwest corner of the Ben B. Pile 1.13 acre tract, (Vol. 396, Pg. 313).

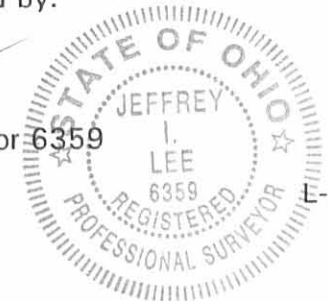
THENCE, with the south line of the said 1.13 acre tract, N 74°-40'-30" E, a distance of 452.21 feet to a 5/8 inch iron rod set.

THENCE, with the east lines of the said 1.13 acre tract, the Jack E. Beuschlein, Sr. 1.74 acre tract, (Vol. 367, Pg. 109), the Joseph W. Ellis 1.90 acre tract, (O.R. 241, Pg. 821), the Richard M. Bishop 1.12 acre tract, (O.R. 116, Pg. 310, Par I), and the Charles Calvin Stannard Jr. 0.61 acre tract, (O.R. 327, Pg. 609), N 3°-39'-06" W, a distance of 684.83 to a 5/8 inch iron rod set at the point of terminus of this easement.

The basis for bearings is the center-line of County Highway 270, being N 20°-05'-39" W, and all other bearings are from deed record.

Description prepared by:

Jeffrey I. Lee
Professional Surveyor 6359
July 29, 1998



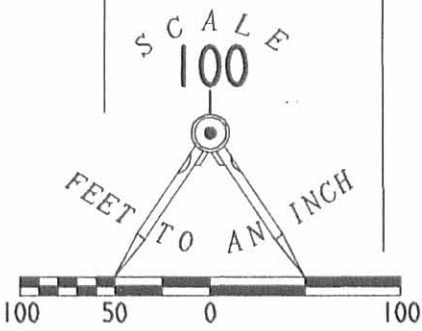
E-2369

ORIGINAL STAMP IN GREEN

INDEXED ON MAP
9067 7D

TOWNSHIP ROAD 87

STATE OF OHIO
0.18 AC.
VOL. 189, PG. 466
PARCEL 146



0.67 ACRES

STA. 405+57
80' LT

CHARLES CALVIN STANNARD, SR.
0.61 ACRES
O.R. 327, PG. 609

RICHARD M. BISHOP
1.12 ACRES
O.R. 116, PG. 310, PAR. 1

STATE OF OHIO
1.00 AC. CHANNEL
CHANGE EASEMENT
VOL. 189, PG. 531
PARCEL 146X

JOSEPH W. ELLIS
1.90 ACRES
O.R. 241, PG. 821

JACK E. BEUSCHLEIN, SR.
1.74 ACRES
VOL. 367, PG. 109

STATE OF OHIO
0.468 AC. CHANNEL
CHANGE EASEMENT
VOL. 189, PG. 529
PARCEL 143Y

BEN B. PILE
1.13 ACRES
VOL. 396, PG. 313

LAKEVIEW COMMUNITY
IMPROVEMENT CORPORATION
ORIG. 16.277 ACRES
O.R. 320, PG. 82

**SURVEY OF A 30 FEET WIDE
WATERLINE EASEMENT OVER THE
LAKEVIEW COMMUNITY
IMPROVEMENT CORPORATION
ORIGINAL 16.277 ACRE TRACT
OFFICIAL RECORD 320, PAGE 82
SECTION 27, TOWN 6, RANGE 8
VILLAGE OF LAKEVIEW
STOKES TOWNSHIP
LOGAN COUNTY, OHIO**

REFERENCES

LOGAN COUNTY ENGINEER'S FILES:
O.K.S. FIELD BOOK 13, PG. 63
FIELD BOOK 705, PG. 33
FIELD BOOK 572, PAGES 36-39
S.H. 168 RELOCATION PLAN
PAGES 9 & 10 OF 11
R-7714, R-6981, R-5960

2 WORKING DAYS



BEFORE YOU DIG



CALL TOLL FREE **800-362-2764**

OHIO UTILITIES PROTECTION SERVICE.

INDEXED ON MAP
9067 7P

COPYRIGHT 1996 BY:
LEE SURVEYING & MAPPING CO., INC.
143 East Columbus Avenue
BELLEFONTAINE, OHIO 43311
(513) 593-7335

D 276 LAKEEASI

L-2369-4