

# Lee Surveying and Mapping Co.



Farm Surveys • Lot Surveys • Topography • Subdivisions • Construction Layout

155 EAST SANDUSKY AVENUE  
HELLEFONTAINE, OHIO 43311

(513) 593-5780

CLAYTON M. LEE, P.S.  
JEFFREY I. LEE, P.S.

## YEASEL (LOT 'A')

Lying in Section 27, T-6, R-8, Stokes Township, Logan County, Ohio.

Being a part of that original 19.44 acre tract in the name of Yeasel as deeded and described in Volume 390, Page 987 of the Logan County Records of Deeds and being more particularly described as follows:

Beginning at a 1" iron pipe found on the center-line of Duff Road (Township Road 87) marking the northwest corner of said 19.44 acre tract.

THENCE, with the said center-line of Duff Road, N 88°-43' E, a distance of 83.79 feet to a railroad spike (set).

THENCE, S 1°-41'-15" E, a distance of 176.00 feet to a 5/8" iron rod (set).

THENCE, parallel to Duff Road S 88°-43' W, a distance of 83.38 feet to the north line of the aforesaid 19.44 acres.

THENCE, with the said north line, N 1°-49'-12" W, a distance of 176.00 feet to the point of beginning.

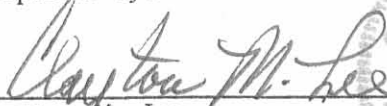
Containing 0.338 acre (14.711 square feet).

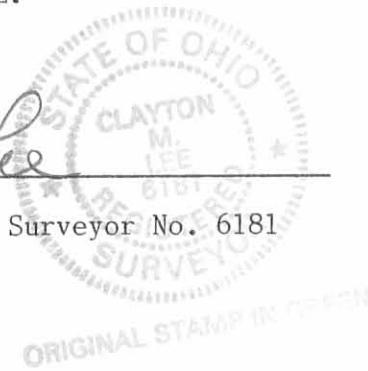
NOTE: It is hereby understood that the owners of this lot must use the public sanitary sewer system for service from this lot.

A 10 foot wide utility easement along the entire west line and a 5 foot wide utility easement along the entire east line is hereby granted for utilities necessary to serve any future development of the remaining part of said original 19.44 acre tract.

This description prepared from an actual field survey.  
Basis for bearings: Center-line of Duff Road = N 88°-43' E.

Prepared by:

  
\_\_\_\_\_  
Clayton M. Lee  
Registered Professional Surveyor No. 6181  
June 17, 1988



INDEXED ON MAP  
779/ 1D-1

# Lee Surveying and Mapping Co.



Farm Surveys • Lot Surveys • Topography • Subdivisions • Construction Layout

55 EAST SANDUSKY AVENUE  
ELLEPONTAINE, OHIO 43311

(513) 593-5780

CLAYTON M. LEE, P.S.  
JEFFREY L. LEE, P.S.

## YEASEL (LOT 'B')

Lying in Section 27, T-6, R-8, Stokes Township, Logan County, Ohio.

Being a part of that original 19.44 acre tract in the name of Yeasel as deeded and described in Volume 390, Page 987 of the Logan County Records of Deeds and being more particularly described as follows:

Beginning at a 1" iron pipe found on the center-line of Duff Road (Township Road 87) marking the northwest corner of said 19.44 acre tract.

THENCE, with the said center-line of Duff Road, N 88°-43' E, a distance of 83.79 feet to a railroad spike set for the TRUE POINT OF BEGINNING.

THENCE, continuing with the said center-line of road, N 88°-43' E, a distance of 83.50 feet to a railroad spike (set).

THENCE, S 1°-41'-15" E, a distance of 176.00 feet to a 5/8" iron rod (set).

THENCE, parallel to Duff Road, S 88°-43' W, a distance of 83.50 feet to a 5/8" iron rod (set).

THENCE, N 1° -41'-15" W, a distance of 176.00 feet to the true point of beginning.

Containing 0.337 acre (14.696 square feet).

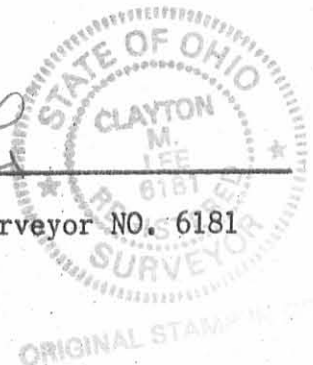
NOTE: It is hereby understood that the owners of this lot must use the public sanitary sewer system for service from this lot.

A 5 foot wide utility easement along the entire west line is hereby granted for utilities necessary to serve any future development of the remaining part of said original 19.44 acre tract.

This description prepared from an actual field survey.  
Basis for bearings: Center-line of Duff Road = N 88°-43' E.

Prepared by:

Clayton M. Lee  
Registered Professional Surveyor NO. 6181  
June 17, 1988



INDEXED ON MAP  
779/10-2

# Lee Surveying and Mapping Co.



Farm Surveys • Lot Surveys • Topography • Subdivisions • Construction Layout

855 EAST SANDUSKY AVENUE  
BELLEFONTAINE, OHIO 43311

(513) 593-5780

CLAYTON M. LEE, P.S.  
JEFFREY I. LEE, P.S.

## YEASEL (LOT 'C')

Lying in Section 27, T-6, R-8, Stokes Township, Logan County, Ohio.

Being a part of that original 19.44 acre tract in the name of Yeasel as deeded and described in Volume 390, Page 987 of the Logan County Records of Deeds and being more particularly described as follows:

Beginning at a 1" iron pipe found on the center-line of Duff Road (Township Road 87) marking the northwest corner of said 19.44 acre tract.

THENCE, with the said center-line of Duff Road, N 88°-43' E, a distance of 227.29 feet to a railroad spike set for the TRUE POINT OF BEGINNING.

THENCE, continuing with the said center-line of road, N 88°-43' E, a distance of 83.50 feet to a railroad spike (set).

THENCE, S 1°-41'-15" E, a distance of 176.00 feet to a 5/8" iron rod (set).

THENCE, parallel to Duff Road, S 88°-43' W, a distance of 83.50 feet to a 5/8" iron rod (set).

THENCE, N 1° -41'-15" W, a distance of 176.00 feet to the true point of beginning.

Containing 0.337 acre (14.696 square feet).

NOTE: It is hereby understood that the owners of this lot must use the public sanitary sewer system for service from this lot.

A 5 foot wide utility easement along the entire east line is hereby granted for utilities necessary to serve any future development of the remaining part of said original 19.44 acre tract.

This description prepared from an actual field survey.  
Basis for bearings: Center-line of Duff Road = N 88°-43' E.

Prepared by:

Clayton M. Lee  
Registered Professional Surveyor NO. 6181  
June 17, 1988



INDEXED ON MAP  
779/10-3

Reciever

# Lee Surveying and Mapping Co.



Farm Surveys • Lot Surveys • Topography • Subdivisions • Construction Layout

855 EAST SANDUSKY AVENUE  
BELLEFONTAINE, OHIO 43311

(613) 493-5780

CLAYTON M. LEE, P.  
JEFFREY L. LEE, P.

## YEASEL (LOT 'D')

Lying in Section 27, T-6, R-8, Stokes Township, Logan County, Ohio.

Being a part of that original 19.44 acre tract in the name of Yeasel as deeded and described in Volume 390, Page 987 of the Logan County Records of Deeds and being more particularly described as follows:

Beginning at a 1" iron pipe found on the center-line of Duff Road (Township Road 87) marking the northwest corner of said 19.44 acre tract.

THENCE, with the said center-line of Duff Road, N 88°-43' E, a distance of 310.79 feet to a railroad spike set for the TRUE POINT OF BEGINNING.

THENCE, continuing with the said center-line of road, N 88°-43' E, a distance of 83.50 feet to a railroad spike (set).

THENCE, S 1°-41'-15" E, a distance of 176.00 feet to a 5/8" iron rod (set).

THENCE, parallel to Duff Road, S 88°-43' W, a distance of 83.50 feet to a 5/8" iron rod (set).

THENCE, N 1° -41'-15" W, a distance of 176.00 feet to the true point of beginning.

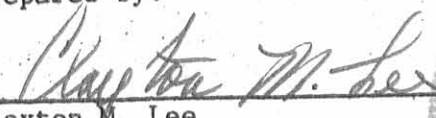
Containing 0.337 acre (14.696 square feet).

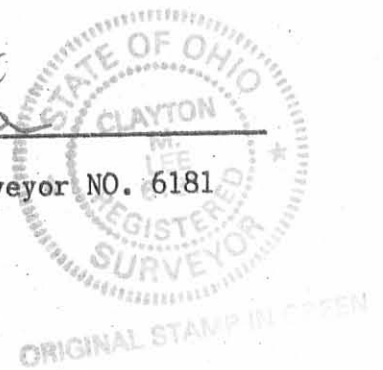
NOTE: It is hereby understood that the owners of this lot must use the public sanitary sewer system for service from this lot.

A 5 foot wide utility easement along the entire west line is hereby granted for utilities necessary to serve any future development of the remaining part of said original 19.44 acre tract.

This description prepared from an actual field survey.  
Basis for bearings: Center-line of Duff Road = N 88°-43' E.

Prepared by:

  
Clayton M. Lee  
Registered Professional Surveyor NO. 6181  
June 17, 1988



INDEXED ON MAP  
7791.1D4

# Lee Surveying and Mapping Co.



Farm Surveys • Lot Surveys • Topography • Subdivisions • Construction Layout

855 EAST SANDUSKY AVENUE  
BELLEFONTAINE, OHIO 43311

(513) 893-5780

CLAYTON M. LEE, P.S.  
JEFFREY I. LEE, P.S.

## YEASEL (LOT 'E')

Lying in Section 27, T-6, R-8, Stokes Township, Logan County, Ohio.

Being a part of that original 19.44 acre tract in the name of Yeasel as deeded and described in Volume 390, Page 987 of the Logan County Records of Deeds and being more particularly described as follows:

Beginning at a 1" iron pipe found on the center-line of Duff Road (Township Road 87) marking the northwest corner of said 19.44 acre tract.

THENCE, with the said center-line of Duff Road, N 88°-43' E, a distance of 454.29 feet to a railroad spike set for the TRUE POINT OF BEGINNING.

THENCE, continuing with said center-line of road, N 88°-43' E, a distance of 83.50 feet to a railroad spike set at the northwest corner of Metz 0.56 acre lot (Volume 310, Page 226).

THENCE, with the west line of the said 0.56 acre lot, S 1°-41'-15" E, a distance of 176.00 feet to a 5/8" iron rod (set).

THENCE, parallel to Duff Road, S 88°-43' W, a distance of 83.50 feet to a 5/8" iron rod (set).

THENCE, N 1°-41'-15" W, a distance of 176.00 feet to the true point of beginning.


Containing 0.337 acre (14,696 square feet).

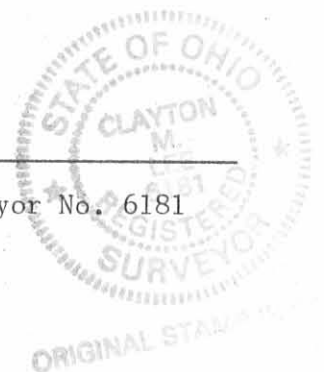
NOTE: It is hereby understood that the owners of this lot must use the public sanitary sewer system for service from this lot.

A 10 foot wide utility easement along the entire east line is hereby granted for utilities necessary to serve any future development of the remaining part of said original 19.44 acre tract.

This description prepared from an actual field survey.  
Basis for bearings: Center-line of Duff Road = N 88°-43' E.

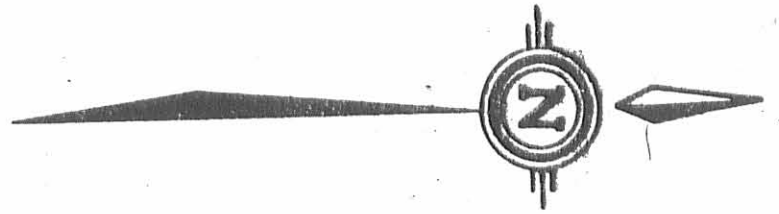
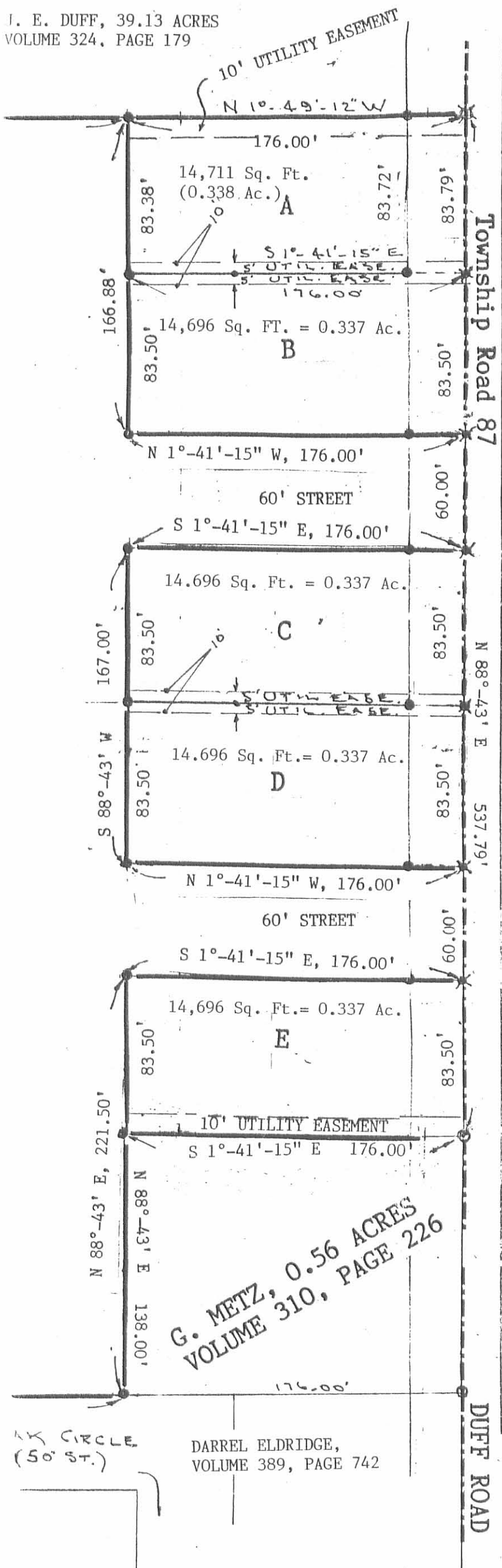
Prepared by:

  
Clayton M. Lee  
Registered Professional Surveyor No. 6181  
June 17, 1988



INDEXED ON MAP

779/1D-5



SCALE: 1 INCH = 60 FEET

**LEGEND**

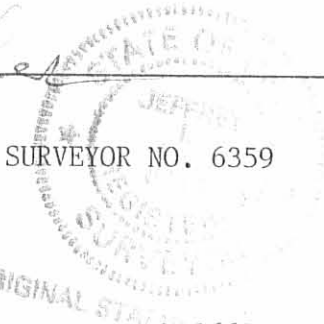
- = 5/8" IRON ROD (SET)
- = 5/8" IRON ROD (FOUND)
- ⊗ = 1" IRON PIPE (FOUND)
- ⊙ = RAILROAD SPIKE (FOUND)
- ⊗ = RAILROAD SPIKE (SET)

**NOTE:**

ALL SANITARY SEWER LINES TO BE CONSTRUCTED TO PUBLIC SANITARY TRUNK LINE ON DUFF ROAD AND/OR SANITARY LINE EAST OF EAST PROPERTY LINE.

SURVEY OF 5 LOTS OUT OF THE YEASEL ORIGINAL 19.44 ACRE TRACT (VOLUME 390, PAGE 987) SECTION 27, T-6, R-8, STOKES TOWNSHIP, LOGAN COUNTY, OHIO.

BY Jeffrey I. Lee  
 JEFFREY I. LEE  
 REGISTERED PROFESSIONAL SURVEYOR NO. 6359  
 JUNE, 1988



ORIGINAL STATE OF OHIO  
 L-1663-3

AK CIRCLE  
 (50' ST.)

DARREL ELDRIDGE,  
 VOLUME 389, PAGE 742

G. METZ, 0.56 ACRES  
 VOLUME 310, PAGE 226

INDEXED ON MAP  
 779/ 1P