

LAKEVIEW ST.

25'

L.H. Y 200
0.25 Ac



W. 2 Dickson
0.15 Ac

1/2" pipe
Found

57.14

1" pipe
Found

46.50

3/4" ϕ B.S.
Set

103.64

90°15'

89°52'

50.10

DR. PAUL V. BONETZKY
0.13 Ac.

49.80

103.78'

1" pipe
Found

3/4" pipe
Found

90°34 1/2'

Homer T. Stabler
0.12 Ac.

25'

DR. BONETZKY SURVEY
SEC 34 T-6S R-8E

LAKEVIEW, OHIO

JANUARY 20, 1968

SCALE 1" = 40'

INDEXED ON MAP

REFERENCE:

FB 410, pg 9
Inskoop Bl. 8, pg 18

NOTES
Bl. 15, pg. 29

4225 IP

DAN L. DODSON
Reg Surveyor 4270
Bellefontaine, Ohio

Bonetzky Survey

LAKE ST.
LAKEVIEW, O

- A = 1/2" pipe found
- B = 1" pipe found
- C = 1/2" pipe found
- D = " " "
- E = " " "
- F = 3/4" pipe found
- G = " " "
- H = 3/4" Bar set on line "A-I"
- I = 1" pipe found

"H-G-F-E" is straight line

See F.B. 419 pg. 9

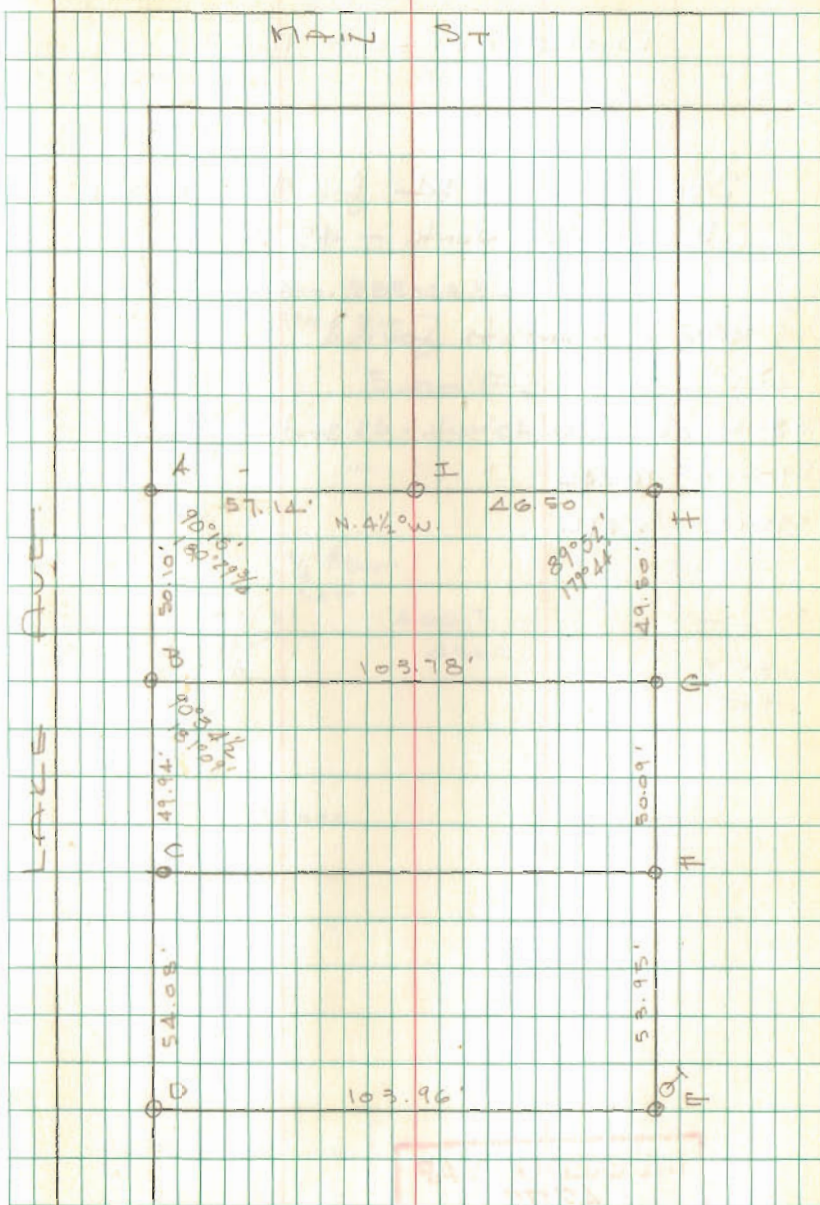
See Inskeep BK 8 pg 18

Dodson
Whitlow
Andis

1/20/68
35°

29

MAIN ST



INDEXED ON MAP
4225