

Pickering Survey

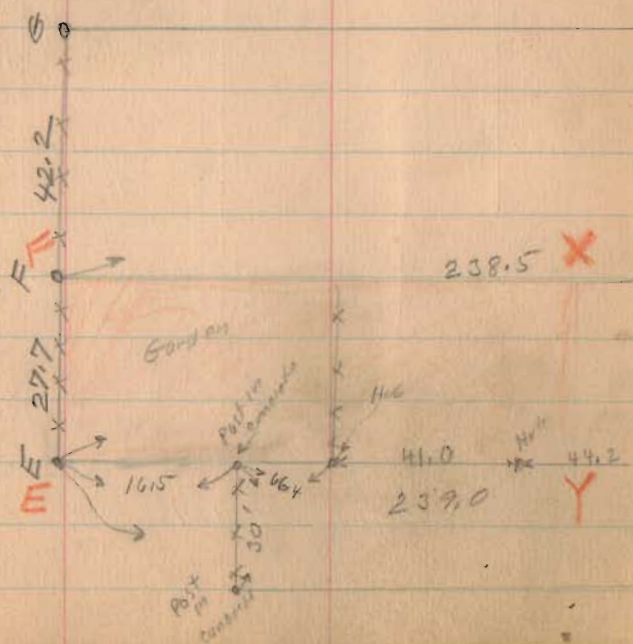
Continued from Page 42 and 43

A-B-C-D-E-F-G same as Page 42

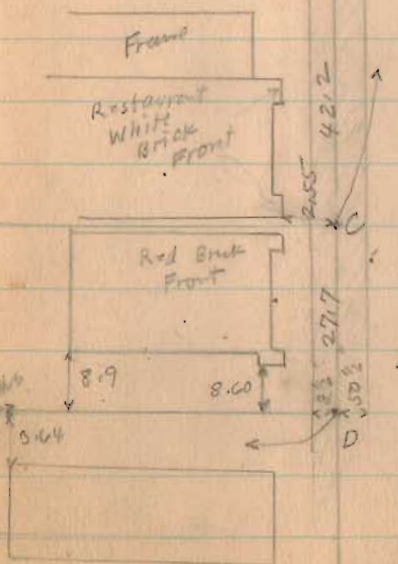
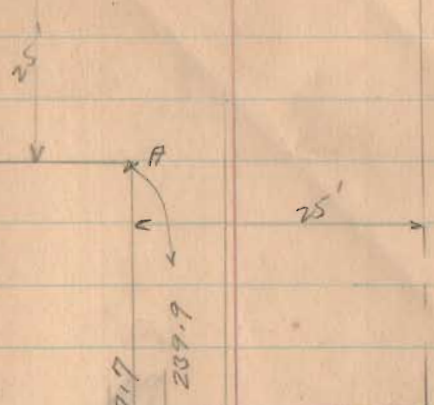
EFXY Transferred Sept. 1933

Deed Vol. 148 Page 160

This deed water 110 X 27.7
CDXY = .07 Acres



Mayn st



(1211)

INDEXED ON MAP

Pickering Surrey - Lakeview

LAKE ST. NE. 1/4 Sec 34 T. 6-R.B.

A - cross on walk see Books 479 Page 24

on Surrey 1100 Drawer R.

B - Mark made on walk

C - R.R. Spike Piled,

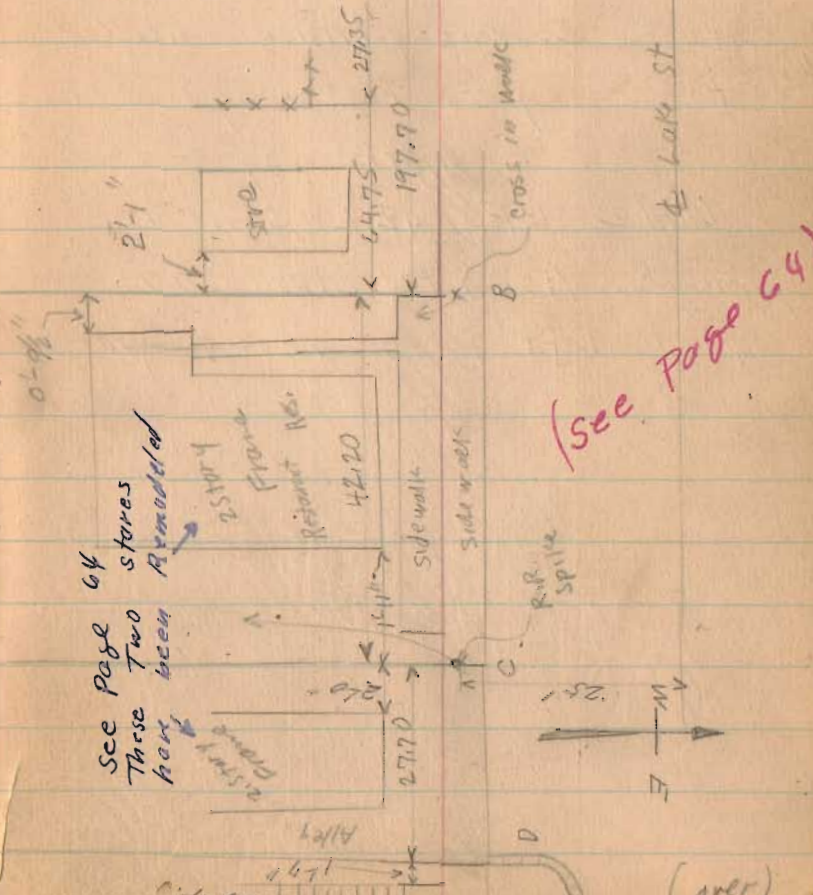
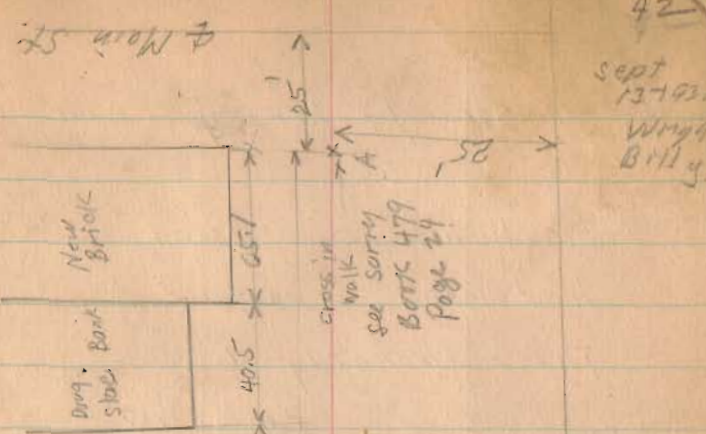
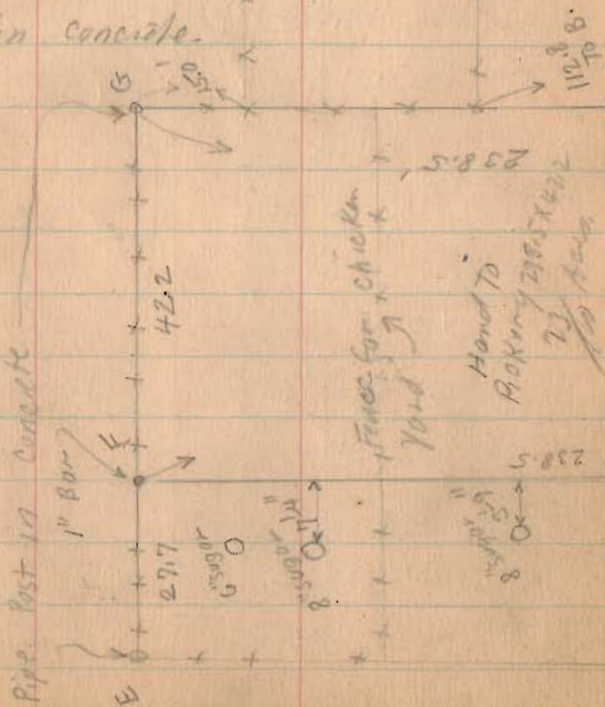
D - Crack in walk

E - Post in concrete

F - 1" Iron Bar

G - Post in concrete.

INDEXED ON MAP. (1211)



See Page 64
These Two
Part been
Armed

(see Page 64)

42
Sept
13-1923
Wm
Bry

(over)

Pickering survey (continued.)

Mr. Hand said point C^{2nd}D
had been considered line.

This apparently is O.K. for
Distance in Back is same
Point C. was division intended
to convey to Pickering.
Set on B sighted on G.
Made G.F. 42.2 same as
front. As noted Above 27.7
part left is same as front.

Vol. - G - 1931
9-13-30

114
43

✓

Christopher To Hand	Vol. 104	Page 393
Miller To Parkinson	" 129	" 72
Miller	" 125	" 468
	" 107	" 192
	" 104	" 393

(see Page 64)

Maple St.

1930

Pickering Survey Lakeview

The following described land in the N.E. Quarter of Sec. 34
Town 6 Range 8 Stokes Township Logan County Ohio, and being in
the Village of Lakeview Ohio.

Beginning at a cross in the concrete sidewalk in the South
side of Lake St. said point being 197.7 feet East of the East side
of Main St. thence S. 238.5 feet to a steel pipe post set in concrete,
thence E. 42.2 feet to a 1" round deformed steel rod, thence
N. 238.5 feet to a R.R. spike in the sidewalk at the South side of
Lake St., thence W. with the S. side of said Lake St., 42.2 feet to
the place of beginning, said tract containing .23 of one acre more
or less and being the same tract as surveyed Sept. 13 1930 as shown and
recorded in Logan County Surveyor's Book 549 page 42.

1211 1D-1

INDEXED ON MAP

Pickering Survey

1934

The following described land in N. E. Quarter of section 34 Town 6 South Range 8 West and being in the village of Lakeview Stokes Township Logan County Ohio.

Beginning at the Intersection of the East side of Main St. and the South Side of Lake St. thence measureing East along the South side of Lake St. 239.9 feet to a cross on the concrete walk for the begining Part of this Survey, thence East with south side of Lake St. 27.7 feet to a cross in concrete walk at William Parish's N. W. corner, thence South with William Parish west line 110.0 feet, thence West 27.7 feet, thence North 110.0 feet to the beging . Said tract containing .07 acres more or less and begining the same tract as surveyed August 10, 1934 as show in Logan County Surveyor's book 549 Page 42.

1211 ID-2

INDEXED ON MAP

F.B. 549

Pickering Surrey - Lakeview

Lake St. NE. 1/4 Sec. 34 T. 6-R.B.

A - cross on walk see Book 479 Page 24

or Surrey 1100 Drawer R.

B - Mark made on walk

C - R.R. Spike Placed.

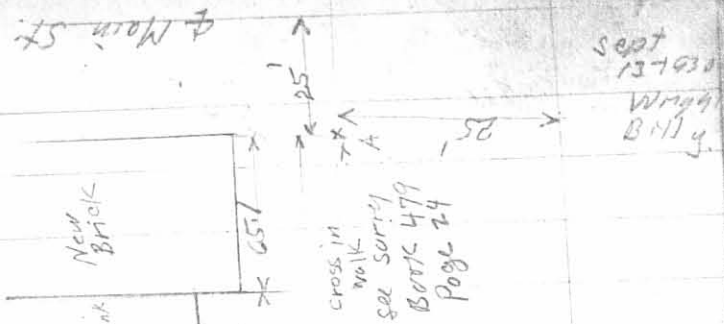
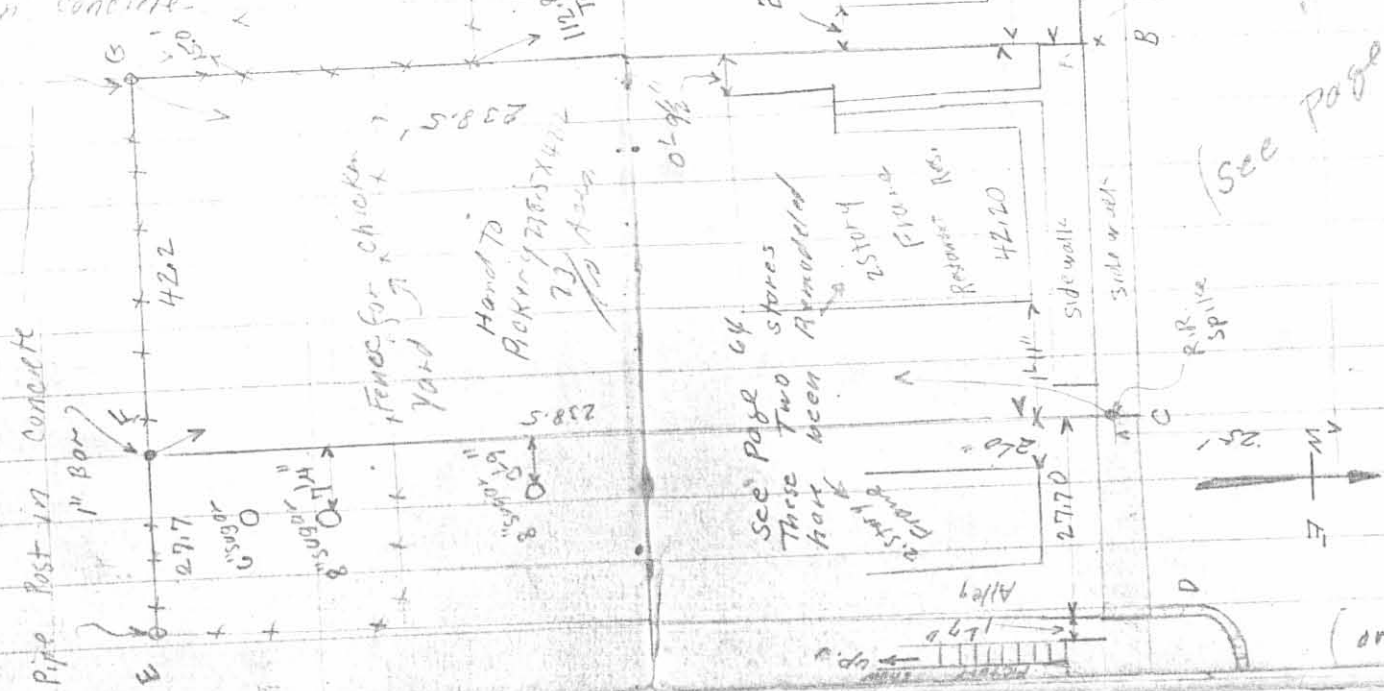
D - Crack in walk

E - Post in concrete

F - 1" Iron Bar

G - Post in concrete

INDEXED ON MAP.
(1211) IP-1



(see page 64)

42
Sept 13-1931
Wright
B.H.G.

(over)

Pickering Survey (continued)

Mr. Hand said point C^{9th D}
had been considered Line
This apparently is O.K. for
Distance in Back is same
Point C. was division intended
to convey to Pickering
set on B sighted on G.
Made G.F. 42.2 same as
front. As noted Above 27.7
part left is same as front.

✓

9-13-30

43

Christopher To Hand	Vol. 104	Page 393
Miller To Parkinson	" 129	" 72
Miller	" 125	" 468
	" 107	" 192
	" 104	" 393

(see Page 64)

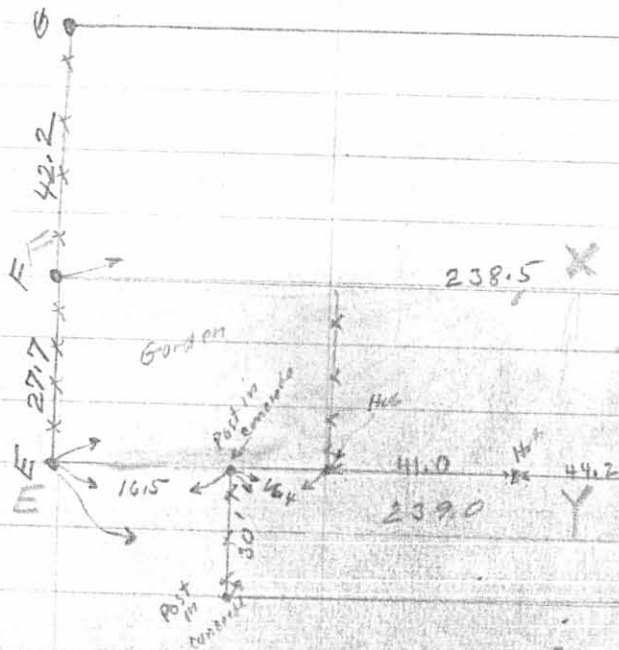
INDEXED ON MAP
1211 IP-2

Pickering Survey
Continued from Page 42 and 43

A-B-C-D-E-F-G same as Page 42

E-F-X-Y Transferred Sept. 1932
Deed Vol. 148 Page 160

This deed written 110 X 27.7
C-D-X-Y = .07 Acres.



(1211) 1P-3
INDEXED ON MAP