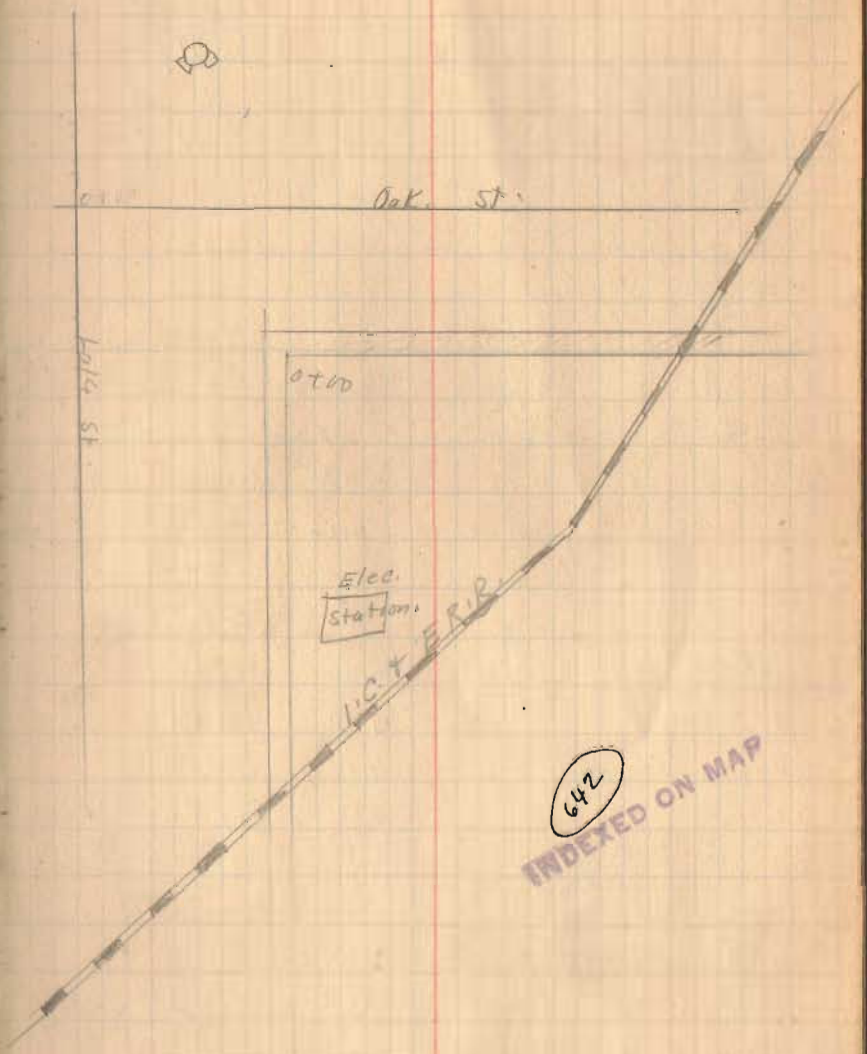


Sidewalks Lakeview.

Aug-13-1927
Wright
Emery Smucker

38



Lakerium Sidewalks

T.S. H.H. -S. E.T.C.

B.M. 3.52 998.33 995.01

0+00 4.40 993.90

0+25 4.50 992.80

0+25 4.60 993.70

0+75 4.80 993.60

1+00 (House Walk ok.) 4.80 993.60

1+25 4.65

1+50 4.50

1+75 4.35

1+50 End abt. End of
good steps.

T.P. 3.90 997.80 4.40 993.90

0+00 3.90 993.90

0+25 4.14 993.66

0+50 4.38 993.42

0+75 4.62 993.18

1+00 4.85

1+25 4.95

1+50 5.05 992.75

1+75 4.14 993.66

2+00 3.20 994.57

2+20 2.50 995.30

B.M. \pm .110.H. \pm .110.YE (See Page 19)

Hubs with Tacks for line

12" off on street side of walk.

Line stakes every 50 feet.

See Book 493 Page 42

for walk on W. side of Oak St.
Note Dates

same at Top E. Rail