

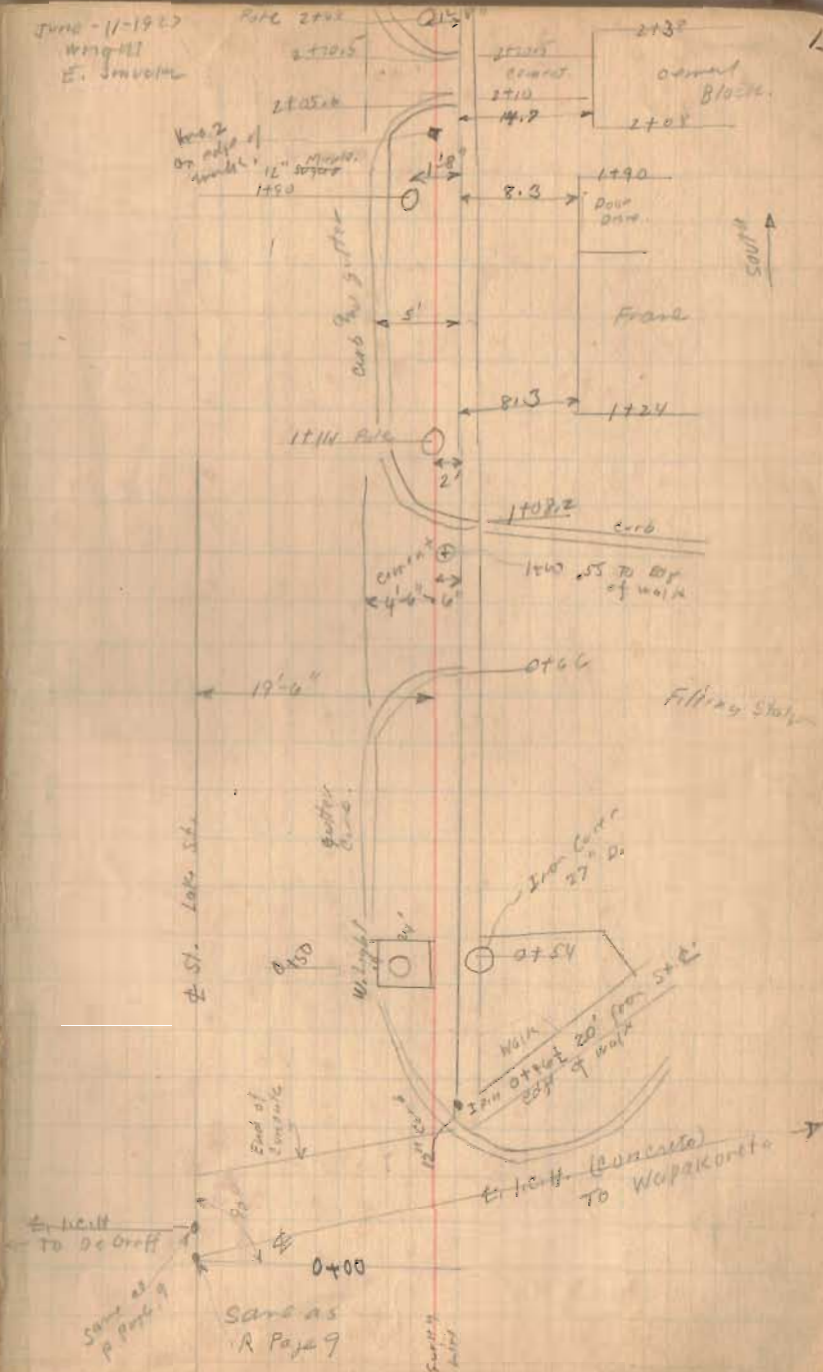
Lake St. Lakeron


INDEXED ON MAP
636

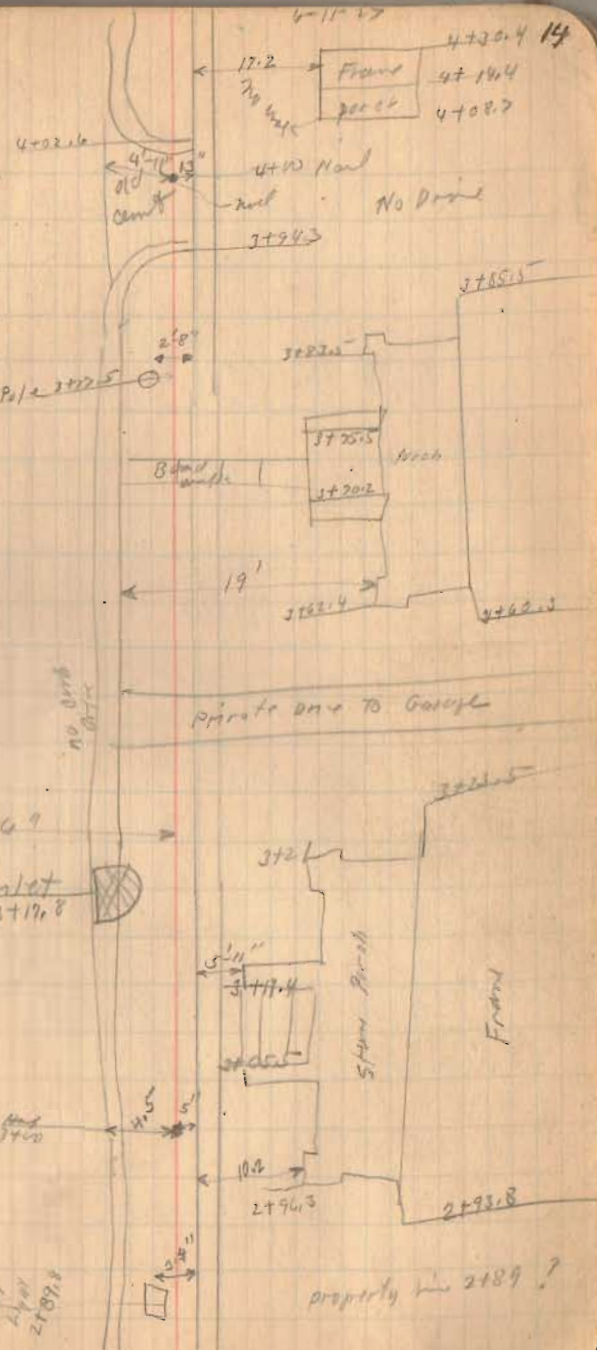
1735
10450

June - 11 - 1963
Wing-H
E. Smalley

13



42'  4113.8



Church.

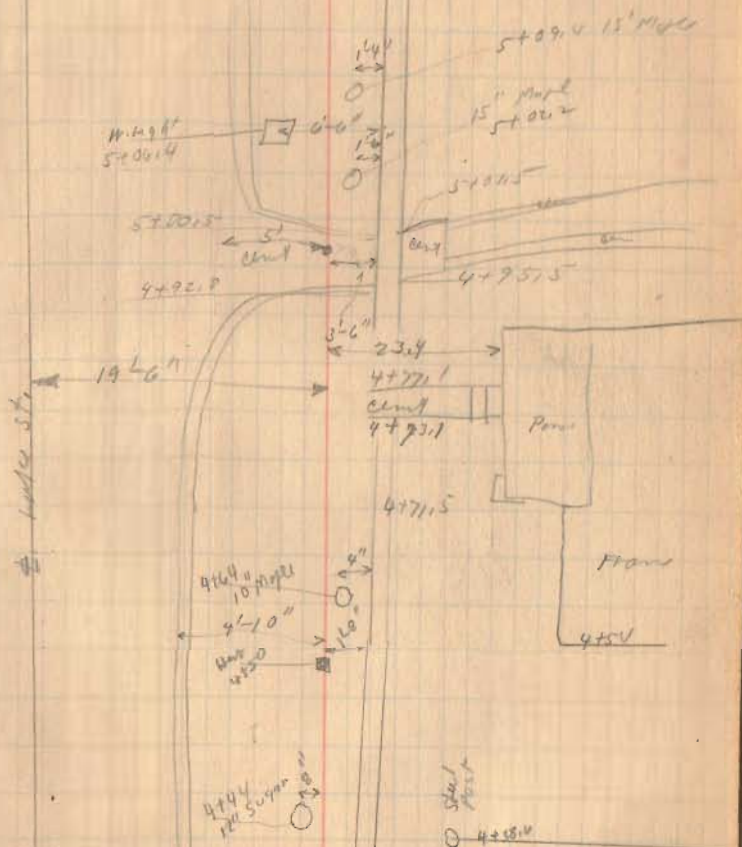
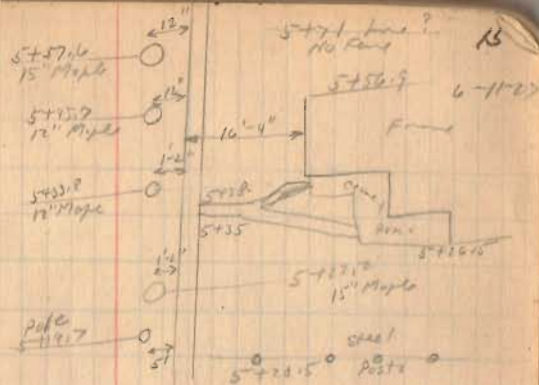
House

No Walk on this side.

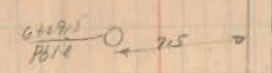
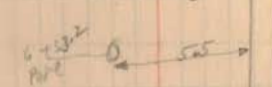
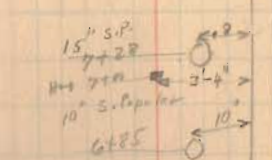
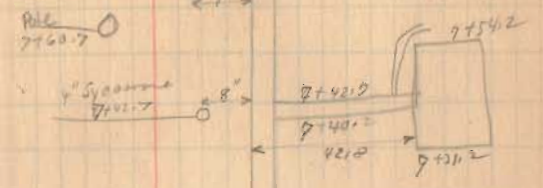
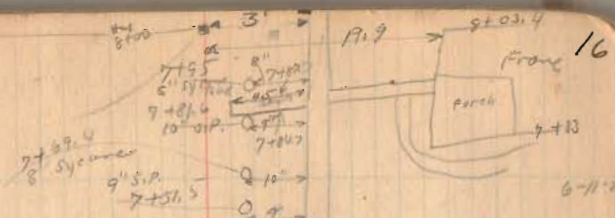
Street 40'?

Chalk	4+72.6
Chalk	4+85.6

Walk,

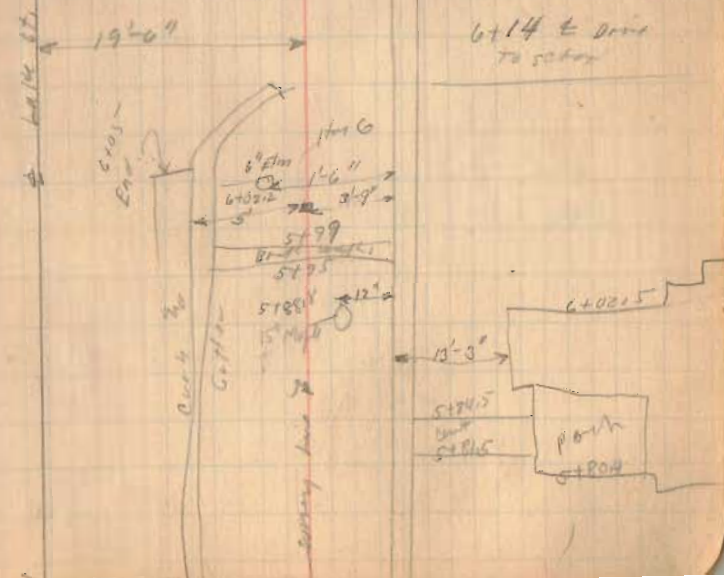


2100



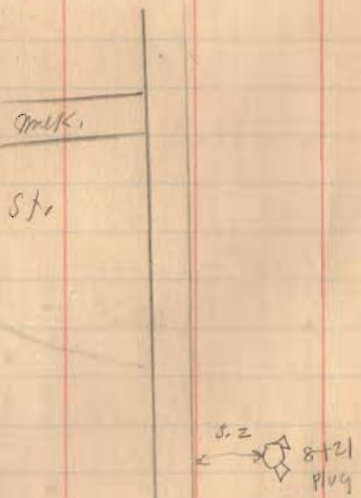
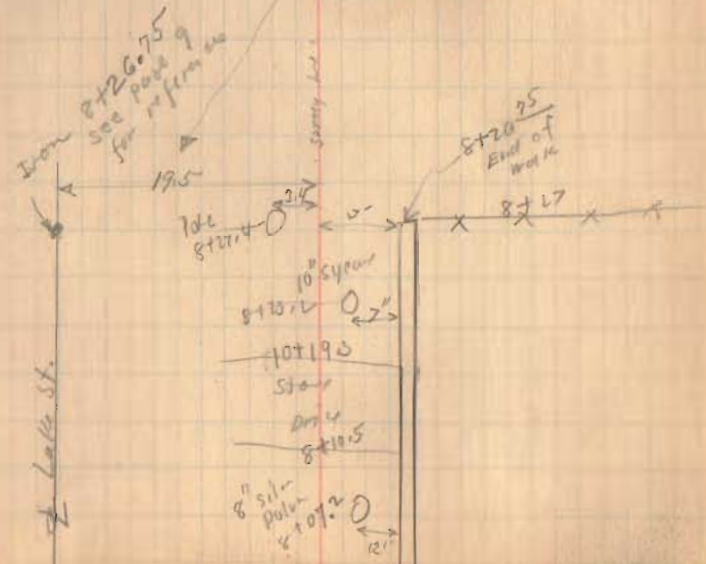
6+32
6+32 Count 70 Sycamore

6+14 to Drive to school



West 

Stakes set 19'-6"
from E of Lake St
as shown



	Lake St.	Lakeview		
	ts.	ts.	ts.	Elev. Grade
B.M.	0.00	1000.71	4.46	1000.71 996.25
	5.10	1001.35		996.25
			6.34	995.01
T.P.	5.50	999.22	<u>7.63</u>	993.72
B.M. (Not T.P.)			2.20	999.02
			4.38	994.74
			5.15	994.07
			5.05	994.17
0 + 50	Northy walk.		4.65	994.57
	Center St.		4.64	994.58
	South walk.		4.95	994.27
1 + 00	North walk		5.25	993.97
	Top curb		5.53	993.69
	& St.		5.29	993.98
	South walk.		5.00	994.22
1 + 50	North walk		5.68	993.54
	curb		5.24	993.48
	South wall		5.40	993.82
	curb		5.47	993.75
T.P.	4.80	998.24	<u>5.78</u>	993.44

June 11-1927

W. Wright

E. Smock

19

B.M. Cross on North end of waste pipe near bulkhead
 H₂O at waste pipe water still gates down - No overflow.
 H₂O Indian Lake at Lakemore 6-11-27 3:00 PM.

See Book 440 Page 6

±, 100 ft. Top S. Rail N.C. & E. R.R.

B.M. Top side of Hydrant N.E. Cor. Lake & Main

Center of Sts. Concrete

On Walk. Air Stone Cor. S.W. Cor.

Top of inlet S.W. Cor.

93.75

Lake St.

	ts.	H. L.	-s.	Elev.	Grade
2+00	North	998.24 walk	5.00	93.24	93.20
		Top curb	5.11	93.13	
	E. St.		4.38	93.86	
	South	walk	4.48	93.76	
		curb	4.65	93.59	
			4.13	94.11	
2+50	N	walk	4.88	93.36	93.65
		curb	5.41	92.83	
	E. St.		4.86	93.38	
	S.	walk	4.60	93.64	
		curb	5.16	93.08	
3+00	N.	walk	5.16	93.08	<u>93.60</u>
		curb	5.46	92.78	
			5.38	92.86	
	E. St.		4.83	93.41	
	S.	walk	4.59	93.09	
		curb	5.22	92.97	
			5.30	92.94	
3+50	N.	walk	4.95	93.29	93.65
		curb	5.54	92.70	
	E. St.				
	S.		4.35	93.89	
		walk	4.90	93.54	
		curb	5.32	92.91	

Flour Van Horn Garage

Top Inlet Ni Side 3+17.8

Top of inlet 3+18 ?

3162 Max
Yard

Stupa said to be High water

6-11-27

21

Lake St.

T.S.	H. I.	-S.	Elev.	Grid	
	998.24				
4+00	North	walk	4.93	93.31	93.00
		curb	5.33	92.91	
		Yard	4.83	93.41	
	E. St.		4.82	93.42	
	South	walk	4.50	93.74	
		curb	4.83	93.41	
B.M. (NOR. T.I.P.)			2.00	96.18	
4+50	North	walk	4.84	93.40	93.75
		curb	5.30	92.94	
		Yard	3.50	94.74	
	E. St.		4.70	93.54	
	South	walk	4.33	93.91	
		curb	4.95	93.29	
5+00	North	walk	4.62	93.62	93.90
		curb	5.20	93.04	
		Yard	3.00	95.24	
	E. St.		4.52	93.72	
	South		4.52	93.72	
5+50	North	walk	4.50	93.74	93.85
		curb	5.12	93.12	
		Yard	4.00	94.24	
	St. St.		4.43	93.81	
	South	walk	4.48	93.76	
		curb	4.99	93.47	

B.M. Top of Fire Plug South Side 4+

E. St. South

		Lake St.			
	+S,	H.L.	-S.	Elev	Grnd
		998.24			
6+00	North	walk	4.48	93.76	93.90
		curb	4.85	93.39	
		Yard	3.85	94.39	
	E. St.		4.45	93.79	
	South	walk	4.35	93.89	
T.P.	588	999.61	4.51	993.93	
6+50	North	walk	5.65	93.96	93.55
		Yard			
	E. St.		5.88	93.73	
	South	walk	5.71	93.90	
7+00	North	walk	5.53	94.08	<u>94.00</u>
		Yard	4.55	95.00	
	E. St.		5.52	94.09	
	South	walk	5.46	94.15	
7+50	North	walk	5.31	94.30	
		Yard	4.00	95.61	
	E. St.		5.20	94.41	
	South	walk	5.13	94.48	
8+00	North	walk	5.15	94.46	
		Yard	3.60	96.01	
	E. St.		4.92	94.69	
	South	walk	5.00	94.61	

LOKE ST.

	T.S.	H.I.	-S.	Elev	Grade
		999.61			
8+00	North		5.12	94.49	
	E St.		4.88	94.73	
			4.80	94.81	
			4.60	95.01	
			4.30	95.31	
			4.05	95.56	
			3.92	95.69	

B.M. 2.00 997.61

check levels

B.M. 0.42 998.04 997.61

T.P. 5.80 998.93 4.91 993.13

B.M. 1.88 997.05

997.02

8+50

9+00

9+50

10+00

95.50

6-1-27

23

end of walk 8+37

at Iron Section

South walk: Down to E. Ld. 8+51.65

" " " W 9+01.75

" " " 50' W 9+51.75

" " " 50' W 10+01.75

" " " 50' W 10+51.75

B.M. Top of Hydrant Near 8+20.
on South side of St.

B.M. Top of Hydrant N.E. Cor. Loke St. Man
See Plat 19

(See Book 493)