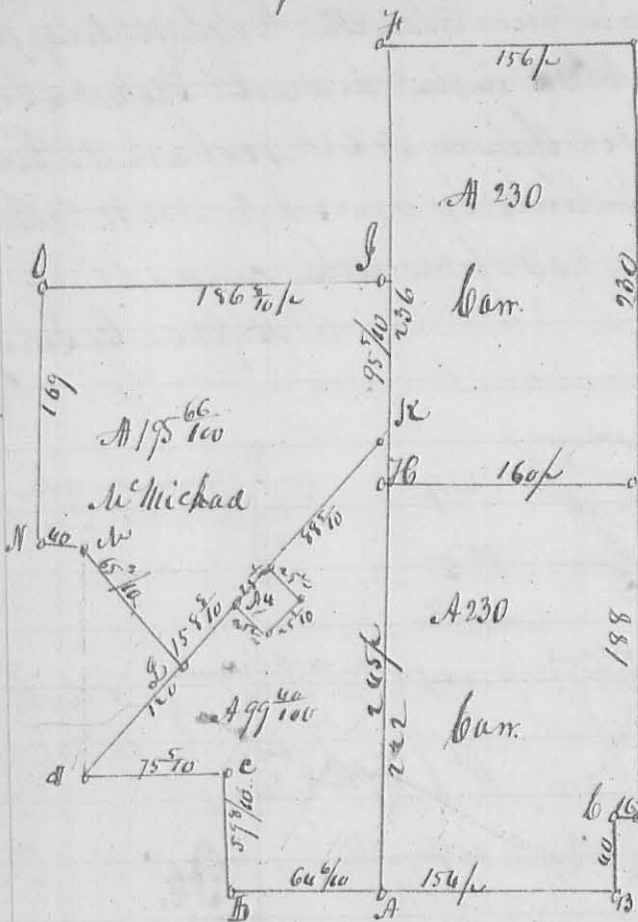


242
N^o 327

May 1836.



Surveyed May 10 1836 for
of the Steiner part of survey
N^o 3316. 43317. as represented by
the annexed plat. Beginning
at A thence N 80 E 154 feet
to W. G. Point
to 2 Hickories the beginning is a
stake in a pine mostly about
1/2 pole from an oak in the
North line and 6 1/2 feet from the
NW corner thence N 10 W 45 feet
to 2 Hickories & Elms on a small
branch in the South line of 3316
thence N 80 E 16 feet to B. to 2
black oaks and oak. Original
made corner. thence N 10 W
to rally sugar
(cupping several branches) thence
E 7 1/2 N 156 feet to 2 Hickories and sugar on the bank of a drain
thence N 10 E 458 feet to the beginning containing 460 acres - Sub. di-
vided into two equal parts by the line G. H. Beginning at G. South
from the N. E. corner as above 23 feet to a White oak of 2 1/2 inches then
G. H. S 81 W 160 feet to Sugar in the East line of the foregoing lot -
at farm turn Surveyed the lot K. L. M. N. O. P. as follows Beginning at S
3 1/2 Yrns Sugar & Hickory S. E. corner to James Byers thence S 80 E 95
feet to a stem in the Sandusky Road (the letter K) thence with
said Road S 31 W 158 1/2 feet to a stake thence N 50 W 65 1/2 feet to
2 Sugar. thence N 80 W 45 feet to stem in the edge of a small branch -
thence N 10 W 169 feet to an Elm an Yrns corner to pole 12 yds then
N 80 E 186 1/2 feet to the beginning containing 195 1/2 acres. also
Surveyed the lot A B C D K. A as follows Beginning at K. a stem in the
Sandusky Road. corner to the foregoing lot. thence S 31 W 88 1/2 feet
to a stem corner to Robert L. Lamb's 4 acres (on the plat) thence
S 59 E 25 1/2 feet to a stem. thence S 31 W 25 1/2 feet to a stem. thence
N 59 W 25 1/2 feet to a stem in the Sandusky road. then in said
Road S 31 W 120 feet passing a stake at 44 1/2 feet. corner to McMichad
ad. to a stake. corner to Kirkpatrick a stem beam. S 76 N 44 feet

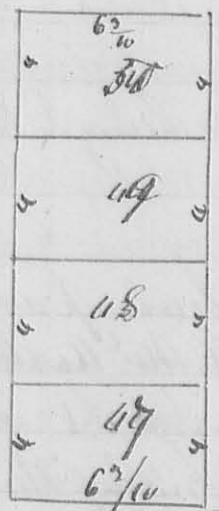
418 feet to E NW corner of the survey
E 7 1/2 N 156 feet to 2 Hickories and sugar on the bank of a drain
thence N 10 E 458 feet to the beginning containing 460 acres - Sub. di-
vided into two equal parts by the line G. H. Beginning at G. South
from the N. E. corner as above 23 feet to a White oak of 2 1/2 inches then
G. H. S 81 W 160 feet to Sugar in the East line of the foregoing lot -
at farm turn Surveyed the lot K. L. M. N. O. P. as follows Beginning at S
3 1/2 Yrns Sugar & Hickory S. E. corner to James Byers thence S 80 E 95
feet to a stem in the Sandusky Road (the letter K) thence with
said Road S 31 W 158 1/2 feet to a stake thence N 50 W 65 1/2 feet to
2 Sugar. thence N 80 W 45 feet to stem in the edge of a small branch -
thence N 10 W 169 feet to an Elm an Yrns corner to pole 12 yds then
N 80 E 186 1/2 feet to the beginning containing 195 1/2 acres. also
Surveyed the lot A B C D K. A as follows Beginning at K. a stem in the
Sandusky Road. corner to the foregoing lot. thence S 31 W 88 1/2 feet
to a stem corner to Robert L. Lamb's 4 acres (on the plat) thence
S 59 E 25 1/2 feet to a stem. thence S 31 W 25 1/2 feet to a stem. thence
N 59 W 25 1/2 feet to a stem in the Sandusky road. then in said
Road S 31 W 120 feet passing a stake at 44 1/2 feet. corner to McMichad
ad. to a stake. corner to Kirkpatrick a stem beam. S 76 N 44 feet

thence N 80° 6 7/10 parts in a County, said to a Beavert, corner 243
 Corner to Kirkpatrick. thence N 10° E with said Kirkpatrick East
 by line 59 7/10 parts to a stone near small kitchen, from which
 N. by N. of Loch's N. W. thence N 80° E with his north line 64 10/100 parts to
 a stone in a pond south westerly about one mile from an old the
 beginning corner of the tract in this survey divided between the bounds
 thence with their west line N 10° W 245 parts, passing Lewis' Corner 42
 gain at 222 parts to the beginning containing 99 40/100 acres.

John Horn }
 John Taylor } Ch. carriers
 Dan Hopkins Secy. Jan. 26

N 328

(876)



This plat represents a South Addition to
 the town of Legansville, and shows lots in the North
 as by the plat. The course of the line and the form as the
 former plat. See page 126. The lots in the South ad-
 dition point on the Sidney road as marked on the plat.
 The figures represent feet. There on the North part
 on the streets and alleys of the old town, and extend
 to Dickson's north line as marked in feet.

Sidney Road



Plantation stone as marked
 above.

Surveyed June 9. 1826.

James Bennett
 Mr Douglas chmn.

Dan Hopkins Secy
 Jan. 26

