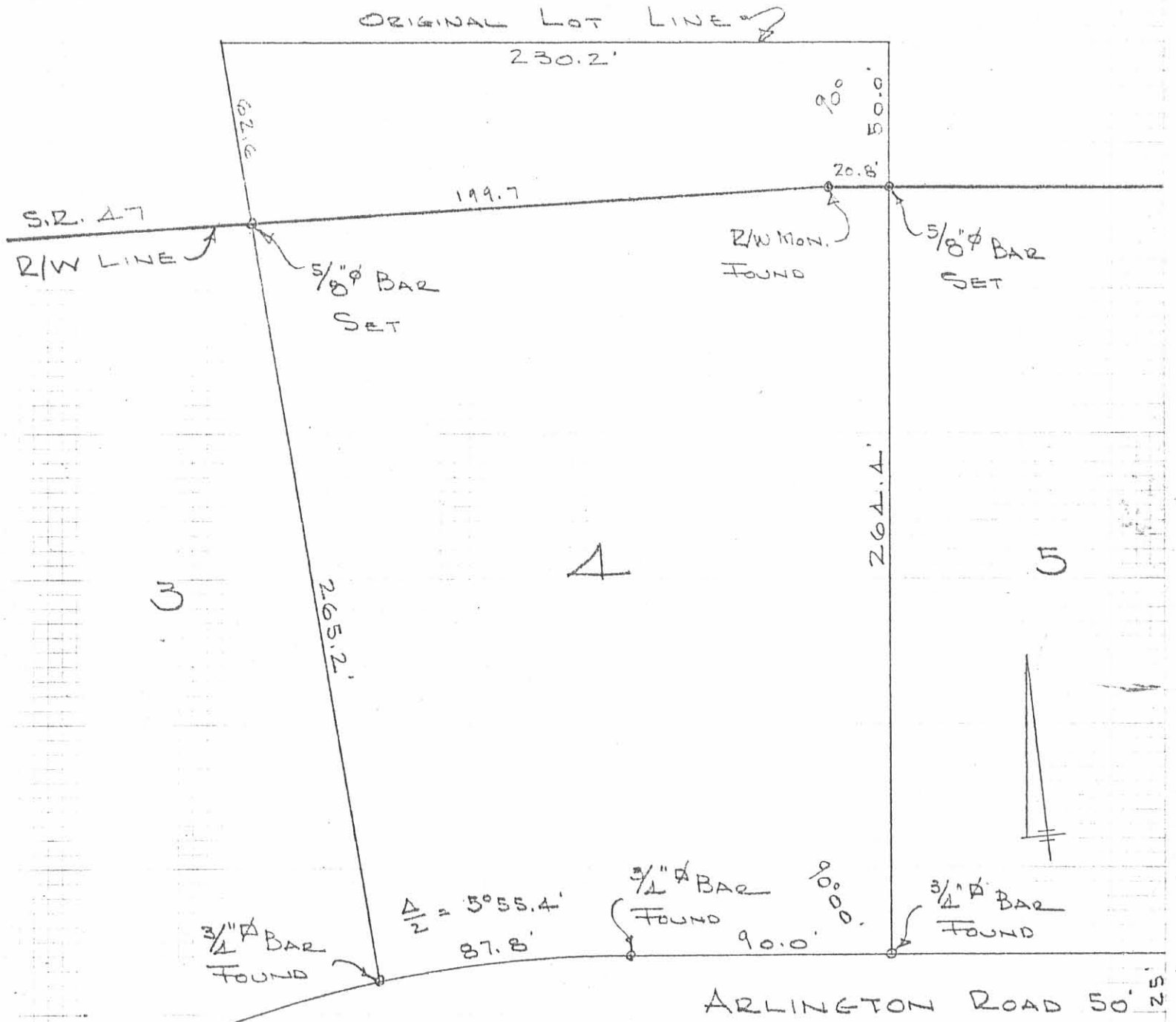


See Dodson Files For Topo Survey



SURVEY OF  
 LOT No 4  
 WOODLAND SUB'D.  
 V.M.S. 2873  
 LAKE TOWNSHIP  
 LOGAN COUNTY, OHIO  
 OCTOBER 25, 1977  
 SCALE 1" = 50'

7300 IP

INDEXED ON MAP

DAN L. DODSON  
 REG. SURVEYOR 4270  
 BELLEFONTAINE, O.