

Morris Description  
October, 1974

Being situated in Lake Township, Logan County, Ohio; and being a part of Section 27, Town 4, Range 14.

Beginning at a iron at the intersection of the centerlines of County Road 185 (Lake Avenue) and County Road 1 (Ludlow Road).

Thence with the center of County Road 1 S  $19^{\circ} - 30'E$  917.5 feet to a iron at the true place of beginning for this description.

Thence continuing with the center of County Road 1 S  $19^{\circ} - 30'E$  156.0 feet to a iron.

Thence with the north line of Henderson's 0.98 acre tract S  $89^{\circ} - 48'W$  215.0 feet to a point.

Thence N  $19^{\circ} - 30'W$  156.0 feet to a point.

Thence with the south line of Eckharts 0.49 acre tract. N  $89^{\circ} - 48'E$  215.0 feet to the place of beginning.

Containing 0.74 of an acre more or less. Being surveyed from a 41.001 acre tract.

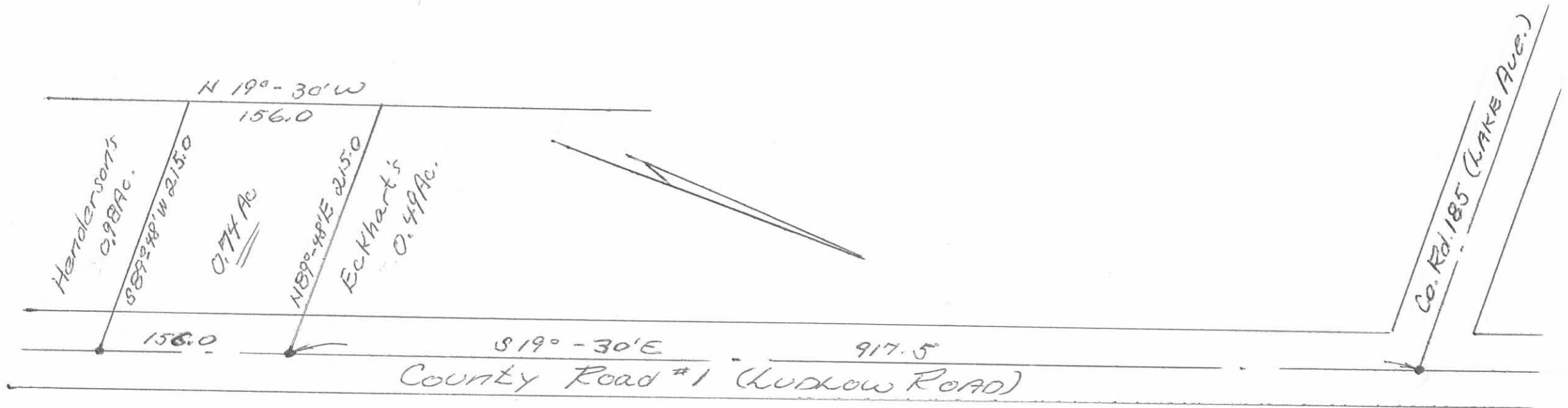
---

Owen K. Shirk

Surveyor 4271

ID  
5571

MORRIS SURVEY  
 LAKE TOWNSHIP, LOGAN COUNTY, OHIO  
 SECTION 27, TOWN 4, RANGE 14 - 1" = 100'



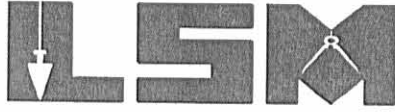
Owen K. Stirk  
 Surveyor 4271  
 Oct, 1974

IP  
 5571

# Lee Surveying and Mapping Co., Inc.

Land Surveys • Topography • Subdivisions • Construction Layout

117 N. Madriver St.  
Bellefontaine OH 43311



Phone: (937) 593-7335  
Fax: (937) 593-7444

**1975-2005 - 30 YEARS OF EXCELLENCE**

PEEK

## 20.00 FEET STORM DRAINAGE EASEMENT

Lying in Section 27, Town 4, Range 14, Lake Township, Logan County, Ohio.

Being a 20.00 feet wide storm drainage easement through the John W. Peek 0.74 acre tract as deeded and described in Official Record 735, Page 527, Tract I of the Logan County Records of Deeds and being more particularly described as follows:

Beginning at a point on the west line of Virginia Military Survey 9572, the east line of Section 27, Town 4, Range 14 on the intersection of center-lines of Township Road 185 (Lake Avenue) and County Highway 1 (Ludlow Road).

THENCE, with the center-line of County Highway 1 (60 feet wide), S 19°-30'-00"E, a distance of 1073.50 feet to a point at the southeast corner of the aforesaid 0.74 acre tract.

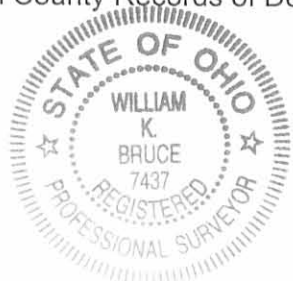
THENCE, with the north line of the William A. Gilroy 0.98 acre tract (O.R. 235, Pg. 483, Tract I), S 89°-48'-00"W, a distance of 30.27 feet to a point.

THENCE, N 0°-12'-00"W, a distance of 10.00 feet to the TRUE POINT OF BEGINNING.

THENCE, with the center-line of this easement, S 89°-48'-00"W, a distance of 188.24 feet to a point on the west line of the aforesaid 0.74 acre tract at the terminus of this easement.

The aforesaid 0.74 acre tract is also subject to a 10.00 feet wide temporary construction easement, 10.00 north of and parallel to said 20.00 feet wide storm drainage easement.

The basis for bearings is the east line of Section 27, being S 19°-30'-00"E, and all other bearings are from angles and distances (from existing records) taken from Official Record 735, Page 527, Tract I of the Logan County Records of Deeds.

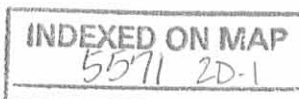


ORIGINAL STAMP IN GREEN

Description prepared by:

William K. Bruce  
Professional Surveyor 7437  
May 24, 2005

L-3829

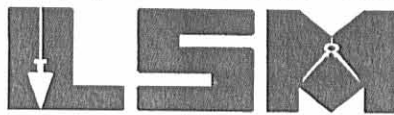


11/10 9 26 05 SMJ OK

# Lee Surveying and Mapping Co., Inc.

Land Surveys • Topography • Subdivisions • Construction Layout

117 N. Madriver St.  
Bellefontaine OH 43311



Phone: (937) 593-7335  
Fax: (937) 593-7444

**1975-2005 - 30 YEARS OF EXCELLENCE**

**PEEK**

## 20.00 FEET STORM DRAINAGE EASEMENT

Lying in Section 27, Town 4, Range 14, Lake Township, Logan County, Ohio.

Being a 20.00 feet wide storm drainage easement through the John W. Peek 0.169 acre tract as deeded and described in Official Record 735, Page 527, Tract II of the Logan County Records of Deeds and being more particularly described as follows:

Beginning at a point on the west line of Virginia Military Survey 9572, the east line of Section 27, Town 4, Range 14 on the intersection of center-lines of Township Road 185 (Lake Avenue) and County Highway 1 (Ludlow Road).

THENCE, with the center-line of County Highway 1 (60 feet wide), S 19°-30'-00"E, a distance of 1073.50 feet to a point at the southeast corner of the John W. Peek 0.74 acre tract (O.R. 735, Pg. 527, Tract I).

THENCE, with the south line of the said 0.74 acre tract and the north line of the William A. Gilroy 0.98 acre tract (O.R. 235, Pg. 483, Tract I), S 89°-48'-00"W, a distance of 30.27 feet to a point.

THENCE, N 0°-12'-00"W, a distance of 10.00 feet to a point.

THENCE, S 89°-48'-00"W, a distance of 188.24 feet to a point at the TRUE POINT OF BEGINNING, on the west line of the aforesaid 0.74 acre tract.

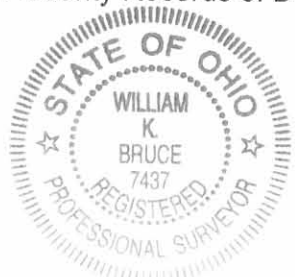
THENCE, with the center-line of this easement, the following two courses:

S 89°-48'-00"W, a distance of 49.19 feet to a point.

S 59°-52'-00"W, a distance of 0.78 feet to a point on the east line of the Karl E. Morris original 36.191 acre tract (O.R. 437, Pg. 854, Tract I) at the terminus of this easement.

The aforesaid 0.169 acre tract is also subject to a 10.00 feet wide temporary construction easement, 10.00 north of and parallel to said 20.00 feet wide storm drainage easement.

The basis for bearings is the east line of Section 27, being S 19°-30'-00"E, and all other bearings are from angles and distances (from existing records) taken from Official Record 735, Page 527, Tract I of the Logan County Records of Deeds.



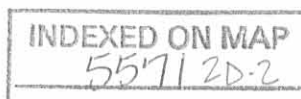
ORIGINAL STAMP IN GREEN

Description prepared by:

A handwritten signature in black ink that reads 'William K. Bruce'.

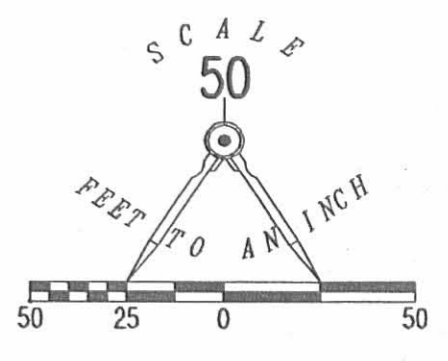
William K. Bruce  
Professional Surveyor 7437  
May 24, 2005

L-3829



REV'D 5-26-05 SWM/OK

LAKE AVENUE TOWNSHIP ROAD 185



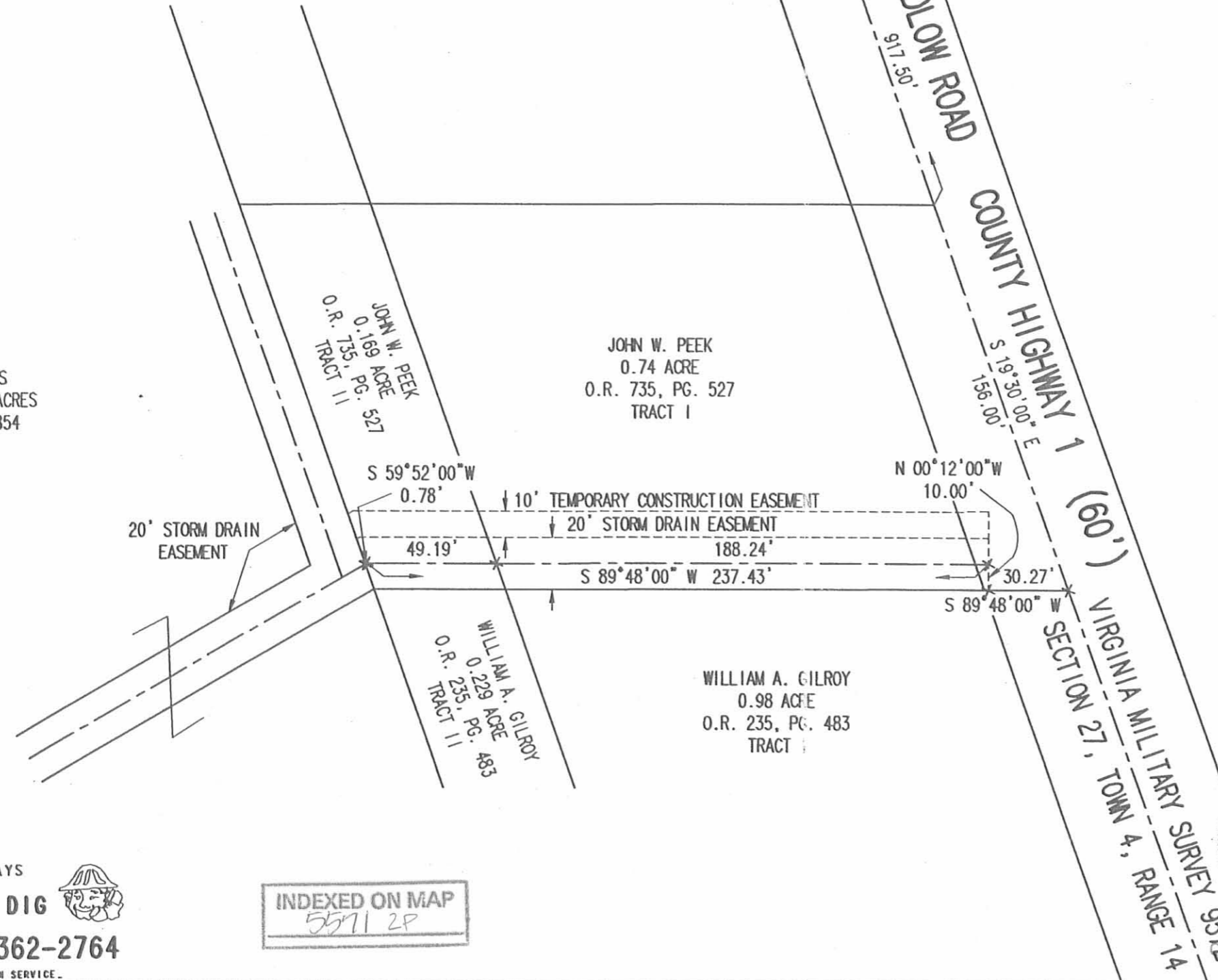
KARL E. MORRIS  
ORIGINAL 36.191 ACRES  
O.R. 437, PG. 854  
TRACT 1

JOHN W. PEEK  
0.189 ACRE  
O.R. 735, PG. 527  
TRACT 1

JOHN W. PEEK  
0.74 ACRE  
O.R. 735, PG. 527  
TRACT 1

WILLIAM A. GILROY  
0.229 ACRE  
O.R. 235, PG. 483  
TRACT 1

WILLIAM A. GILROY  
0.98 ACRE  
O.R. 235, PG. 483  
TRACT 1



STORM DRAIN EASEMENT  
AND  
TEMPORARY CONSTRUCTION EASEMENT  
SECTION 27, TOWN 4, RANGE 14  
LAKE TOWNSHIP  
LOGAN COUNTY, OHIO

SURVEYED BY:

*William K. Bruce*  
WILLIAM K. BRUCE  
PROFESSIONAL SURVEYOR 7437  
MAY 24, 2005



COPYRIGHT 2005 BY:  
LEE SURVEYING & MAPPING CO., INC.  
117 North Madriver Street  
BELLEFONTAINE, OHIO 43311  
(937) 593-7335

2 WORKING DAYS  
**BEFORE YOU DIG**  
CALL TOLL FREE **800-362-2764**  
OHIO UTILITIES PROTECTION SERVICE.

INDEXED ON MAP  
5571 2P

OK-704 8/1/25

# Lee Surveying and Mapping Co., Inc.

Land Surveys • Topography • Subdivisions • Construction Layout

117 N. Madriver St.  
Bellefontaine OH 43311



Phone: (937) 593-7335  
Fax: (937) 593-7444

**1975-2005 - 30 YEARS OF EXCELLENCE**

## PEEK 10.00 FEET STORM DRAINAGE EASEMENT

Lying in Section 27, Town 4, Range 14, Lake Township, Logan County, Ohio.

Being a 10.00 feet wide storm drainage easement through the John W. Peek 0.74 acre tract as deeded and described in Official Record 735, Page 527, Tract I of the Logan County Records of Deeds and being more particularly described as follows:

Beginning at a point on the west line of Virginia Military Survey 9572, the east line of Section 27, Town 4, Range 14 on the intersection of center-lines of Township Road 185 (Lake Avenue) and County Highway 1 (Ludlow Road).

THENCE, with the center-line of County Highway 1 (60 feet wide), S 19°-30'-00"E, a distance of 1073.50 feet to a point at the southeast corner of the aforesaid 0.74 acre tract.

THENCE, with the north line of the William A. Gilroy 0.98 acre tract (O.R. 235, Pg. 483, Tract I), S 89°-48'-00"W, a distance of 30.27 feet to a point.

THENCE, N 0°-12'-00"W, a distance of 10.00 feet to the TRUE POINT OF BEGINNING.

THENCE, with the center-line of this easement, S 89°-48'-00"W, a distance of 188.24 feet to a point on the west line of the aforesaid 0.74 acre tract at the terminus of this easement.

The aforesaid 0.74 acre tract is also subject to a 10.00 feet wide temporary construction easement, 10.00 north of and parallel to said 10.00 feet wide storm drainage easement.

The basis for bearings is the east line of Section 27, being S 19°-30'-00"E, and all other bearings are from angles and distances (from existing records) taken from Official Record 735, Page 527, Tract I of the Logan County Records of Deeds.



ORIGINAL STAMP IN GREEN

Description prepared by:

A handwritten signature in black ink, appearing to read 'Jeffrey I. Lee'.

Jeffrey I. Lee  
Professional Surveyor 6359  
July 28, 2005

L-3829

INDEXED ON MAP  
55713D.1



orig 8/1/05

# Lee Surveying and Mapping Co., Inc.

Land Surveys • Topography • Subdivisions • Construction Layout



117 N. Madriver St.  
Bellefontaine OH 43311

Phone: (937) 593-7335  
Fax: (937) 593-7444

**1975-2005 - 30 YEARS OF EXCELLENCE**

**PEEK**

## 10.00 FEET STORM DRAINAGE EASEMENT

Lying in Section 27, Town 4, Range 14, Lake Township, Logan County, Ohio.

Being a 10.00 feet wide storm drainage easement through the John W. Peek 0.169 acre tract as deeded and described in Official Record 735, Page 527, Tract II of the Logan County Records of Deeds and being more particularly described as follows:

Beginning at a point on the west line of Virginia Military Survey 9572, the east line of Section 27, Town 4, Range 14 on the intersection of center-lines of Township Road 185 (Lake Avenue) and County Highway 1 (Ludlow Road).

THENCE, with the center-line of County Highway 1 (60 feet wide), S 19°-30'-00"E, a distance of 1073.50 feet to a point at the southeast corner of the John W. Peek 0.74 acre tract (O.R. 735, Pg. 527, Tract I).

THENCE, with the south line of the said 0.74 acre tract and the north line of the William A. Gilroy 0.98 acre tract (O.R. 235, Pg. 483, Tract I), S 89°-48'-00"W, a distance of 30.27 feet to a point.

THENCE, N 0°-12'-00"W, a distance of 10.00 feet to a point.

THENCE, S 89°-48'-00"W, a distance of 188.24 feet to a point at the TRUE POINT OF BEGINNING, on the west line of the aforesaid 0.74 acre tract.

THENCE, with the center-line of this easement, the following two courses:

S 89°-48'-00"W, a distance of 49.19 feet to a point.

S 59°-52'-00"W, a distance of 0.78 feet to a point on the east line of the Karl E. Morris original 36.191 acre tract (O.R. 437, Pg. 854, Tract I) at the terminus of this easement.

The aforesaid 0.169 acre tract is also subject to a 10.00 feet wide temporary construction easement, 10.00 north of and parallel to said 10.00 feet wide storm drainage easement.

The basis for bearings is the east line of Section 27, being S 19°-30'-00"E, and all other bearings are from angles and distances (from existing records) taken from Official Record 735, Page 527, Tract I of the Logan County Records of Deeds.



Description prepared by:

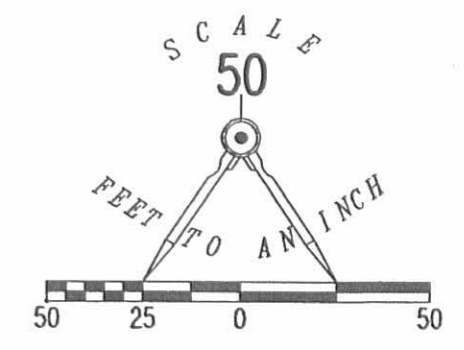
*[Signature]*  
Jeffrey I. Lee  
Professional Surveyor 6359  
July 28, 2005

ORIGINAL STAMP IN GREEN

L-3829

INDEXED ON MAP  
5571 3D-2

LAKE AVENUE TOWNSHIP ROAD 185



KARL E. MORRIS  
ORIGINAL 36.191 ACRES  
O.R. 437, PG. 854  
TRACT I

JOHN W. PEEK  
O.R. 735, PG. 527  
TRACT II

JOHN W. PEEK  
0.74 ACRE  
O.R. 735, PG. 527  
TRACT I

20' STORM DRAIN EASEMENT

S 59°52'00"W

0.78'

10' TEMPORARY CONSTRUCTION EASEMENT

10' STORM DRAIN EASEMENT

49.19'

S 89°48'00" W 237.43'

N 00°12'00"W

10.00'

S 89°48'00" W

30.27'

WILLIAM A. GILROY  
O.R. 235, PG. 483  
TRACT II

WILLIAM A. GILROY  
0.98 ACRE  
O.R. 235, PG. 483  
TRACT I

LUDLOW ROAD  
917.50'  
S 19°30'00" E  
159.00'  
COUNTY HIGHWAY 1  
(60')  
SECTION 27, TOWN 4, RANGE 14  
VIRGINIA MILITARY SURVEY 6912

STORM DRAIN EASEMENT  
AND  
TEMPORARY CONSTRUCTION EASEMENT  
SECTION 27, TOWN 4, RANGE 14  
LAKE TOWNSHIP  
LOGAN COUNTY, OHIO

SURVEYED BY:

*Jeffrey I. Lee*  
JEFFREY I. LEE  
PROFESSIONAL SURVEYOR 6359  
JULY 28, 2005



COPYRIGHT 2005 BY:  
LEE SURVEYING & MAPPING CO., INC.  
117 North Madriver Street  
BELLEFONTAINE, OHIO 43311  
(937) 593-7335

KSR D0505 3829055 L-3829-3

2 WORKING DAYS  
**BEFORE YOU DIG**  
CALL TOLL FREE **800-362-2764**  
OHIO UTILITIES PROTECTION SERVICE

INDEXED ON MAP  
5571 3P