

REC'D 2-12-96 SWJ OK JCH



Lee Surveying and Mapping Co.



Farm Surveys • Lot Surveys • Topography • Subdivisions • Construction Layout

143 EAST COLUMBUS AVENUE
BELLEFONTAINE, OHIO 43311

(513) 593-7335

JEFFREY I. LEE, P.S.

JAMES F. WISH 12.629 ACRES

Lying in Virginia Military Survey 2873, Lake Township, Logan County, Ohio.

Being out of the James F. Wish original 120.31 acre tract as deeded and described in Official Record 13, Page 222 of the Logan County Records of Deeds and being more particularly described as follows:

Beginning at a stone found at the intersection of Virginia Military Surveys 3317, 2873 and 3324, and at the northeast corner of the Senora Louise Brugler 4.18 acre tract (O.R. 154, Pg. 609, Par. 2).

THENCE, with the north line of Virginia Military Survey 2873 and the said 4.18 acre tract, S 85°-15'-00" W, a distance of 559.44 feet to a 5/8 inch iron rod set at the TRUE POINT OF BEGINNING.

THENCE, with the lines of the said 4.18 acre tract the following two courses:

S 10°-37'-53" E, a distance of 291.80 feet to a 5/8 inch iron rod set.

S 85°-12'-28" E, a distance of 538.29 feet to a 5/8 inch iron rod set.

THENCE, with the west line of the James F. Wish, Trustee 61.94 acre tract (O.R. 196, Pg. 158, Tr. I), S 4°-56'-51" E, a distance of 899.56 feet to a 5/8 inch iron rod set.

THENCE, through the said original 120.31 acre tract, S 73°-40'-05" W, a distance of 440.00 feet to a 5/8 inch iron rod set.

THENCE, with the east line of the Richard E. Groves original 106.32 acre tract (Vol. 352, Pg. 270), N 14°-43'-32" W, a distance of 1388.38 feet to a stone found at the northwest corner of the said 120.31 acre tract and on the north line of Virginia Military Survey 2873.

THENCE, with the north line of Virginia Military Survey 2873 and the south line of the Senora Louise Brugler 143.45 acre tract (O.R. 154, Pg. 609, Parcel 1), N 85°-15'-00" E, a distance of 107.70 feet to the point of beginning.

Containing 12.629 acres.

The basis for bearings is the north line of Virginia Military Survey 2873 is N 85°-15'-00" E, and all other bearings are from angles and distances measured in a field survey by Lee Surveying and Mapping Co., Inc. on February 2, 1996.



Description prepared by:

Jeffrey I. Lee
Professional Surveyor 6359
February 6, 1996
Revised February 12, 1996

L 1150

ORIGINAL STAMP IN GREEN

INDEXED ON MAP
4810 ID

REFERENCES:

LOGAN COUNTY ENGINEER'S FILES:
 R-4935
 R-295
 R-4810

SENORA LOUISE BRUGLER
 143.45 ACRES
 O.R. 154, PG. 609
 PARCEL NO. 1

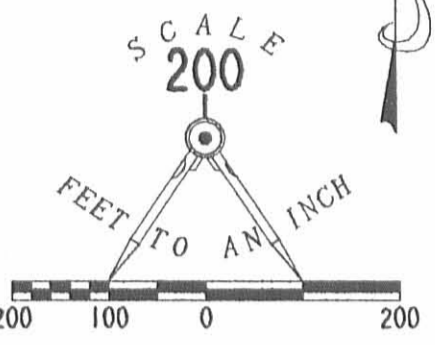
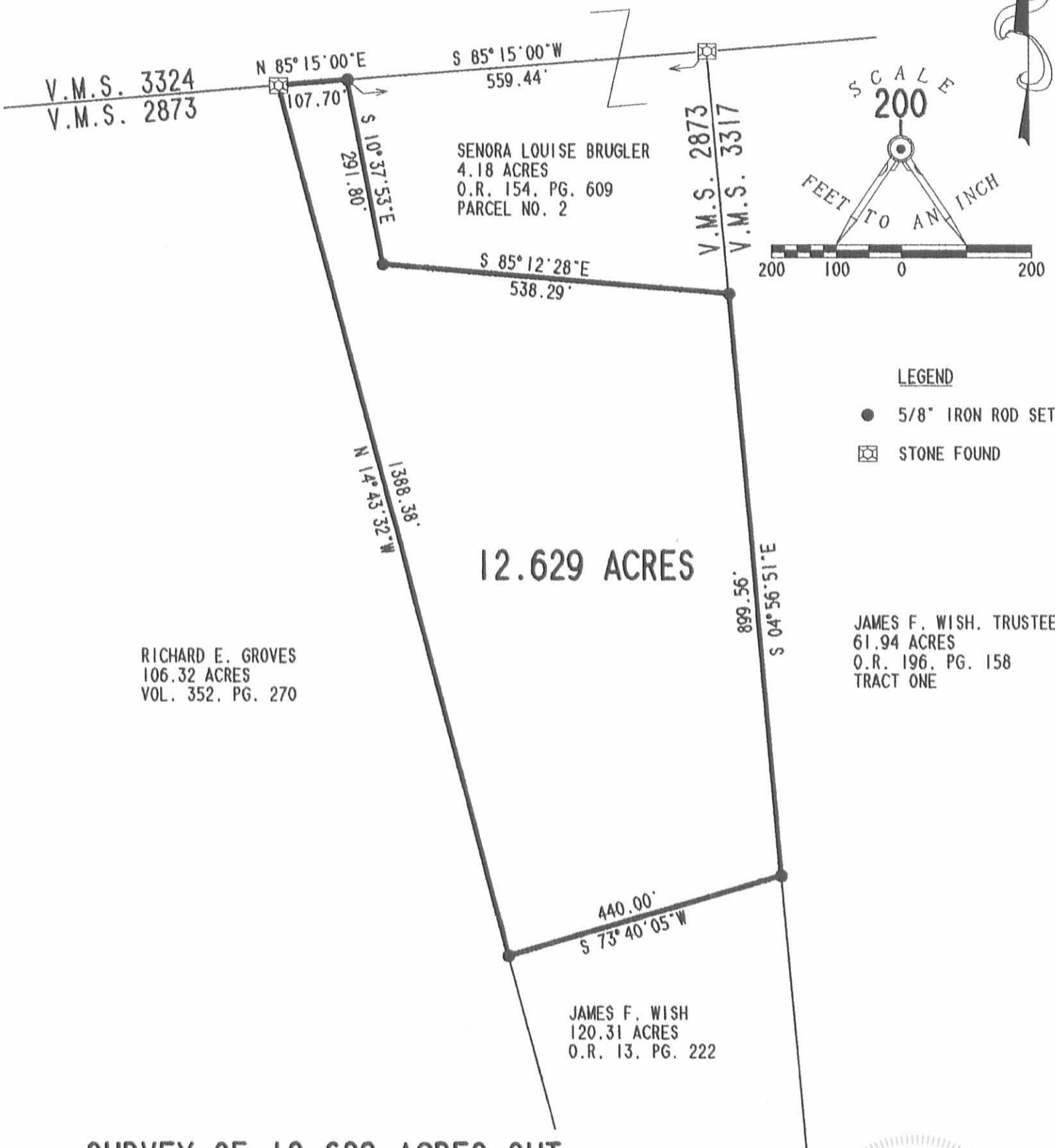
SENORA LOUISE BRUGLER
 4.18 ACRES
 O.R. 154, PG. 609
 PARCEL NO. 2

RICHARD E. GROVES
 106.32 ACRES
 VOL. 352, PG. 270

JAMES F. WISH
 120.31 ACRES
 O.R. 13, PG. 222

JAMES F. WISH, TRUSTEE
 61.94 ACRES
 O.R. 196, PG. 158
 TRACT ONE

12.629 ACRES



- LEGEND**
- 5/8" IRON ROD SET
 - ⊠ STONE FOUND

**SURVEY OF 12.629 ACRES OUT
 OF THE JAMES F. WISH
 ORIGINAL 120.31 ACRE TRACT
 OFFICIAL RECORD 13, PAGE 222
 VIRGINIA MILITARY SURVEY 2873
 LAKE TOWNSHIP
 LOGAN COUNTY, OHIO**



SURVEYED BY:

ORIGINAL STAMP IN GREEN

JEFFREY I. LEE
 PROFESSIONAL SURVEYOR 6359
 FEBRUARY 2, 1996
 REVISED FEBRUARY 12, 1996

COPYRIGHT 1996 BY:
LEE SURVEYING & MAPPING CO., INC.
 143 East Columbus Avenue
 BELLEFONTAINE, OHIO 43311
 (513) 593-7335

2 WORKING DAYS
BEFORE YOU DIG
 CALL TOLL FREE **800-362-2764**
 OHIO UTILITIES PROTECTION SERVICE.

INDEXED ON MAP
 4810.1P

Wish-Groves Survey
V.M.S. 2873
Lake Township
February 22, 1975

The following described real estate situated in Lake Township;
Logan County, Ohio and being part of Virginia Military Survey
2873 and more particularly described as follows:

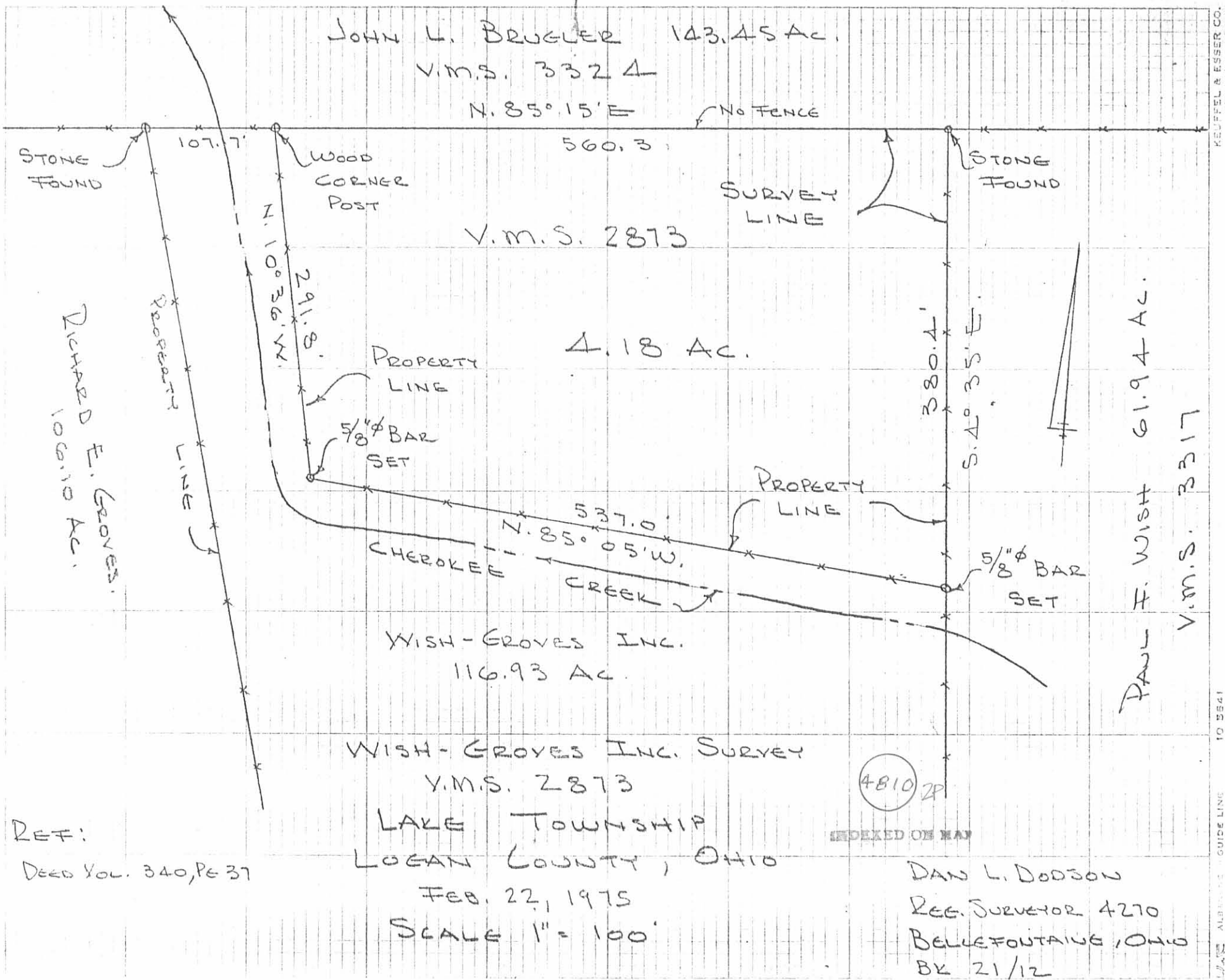
Commencing at a stone in the north line of V.M.S. 2873 at the
northeast corner of Richard E. Groves' 106.10 acre tract;
thence with said survey line N.85° 15'E. 107.7 feet to a
wood post, said post being the beginning point of this description;
thence continuing with the north line of V.M.S. 2873 N.85° 15'E.
560.3 feet to a stone at the northeast corner of said V.M.S.
2873; thence with the east line of said survey S.4° 35'E.
380.4 feet to an iron bar; thence N.85° 05'W. 537.0 feet to
an iron bar; thence N. 10° 36'W. 291.8 feet to the place
of beginning.

Containing 4.18 acres more or less.

The above described tract being part of Wish-Groves Inc.
121.11 acre tract as recorded in deed volume 340, page 37.

4810 2D

INDEXED ON MAP



JOHN L. BRUGLER 143.45 Ac.
 V.M.S. 3324

N. 85° 15' E

560.3

NO FENCE

STONE FOUND

107.7'

WOOD CORNER POST

STONE FOUND

SURVEY LINE

V.M.S. 2873

RICHARD F. GROVES
 106.10 AC.

PROPERTY LINE

N. 100° 36' W.
 291.8'

PROPERTY LINE

4.18 AC.

5/8" φ BAR SET

380.4'
 S. 40° 35' E.

PROPERTY LINE

537.0'
 N. 85° 05' W.

CHEROKEE CREEK

5/8" φ BAR SET

WISH-GROVES INC.
 116.93 AC.

PAUL F. WISH 61.94 AC.
 V.M.S. 3317

WISH-GROVES INC. SURVEY
 V.M.S. 2873

LAKE TOWNSHIP
 LOGAN COUNTY, OHIO

FEB. 22, 1975
 SCALE 1" = 100'

4810

INDEXED ON MAP

DAN L. DODSON
 REG. SURVEYOR 4270
 BELLEFONTAINE, OHIO
 BK 21/12

REF:
 DEED VOL. 340, PG 37

REDFIELD & ESSER CO.

10 5541

LAKE ALBANY GUIDE LINE

GROVES SURVEY

A Stone Found @ W. side of Cen. post

55°54.7
235°54.2
180°00.1

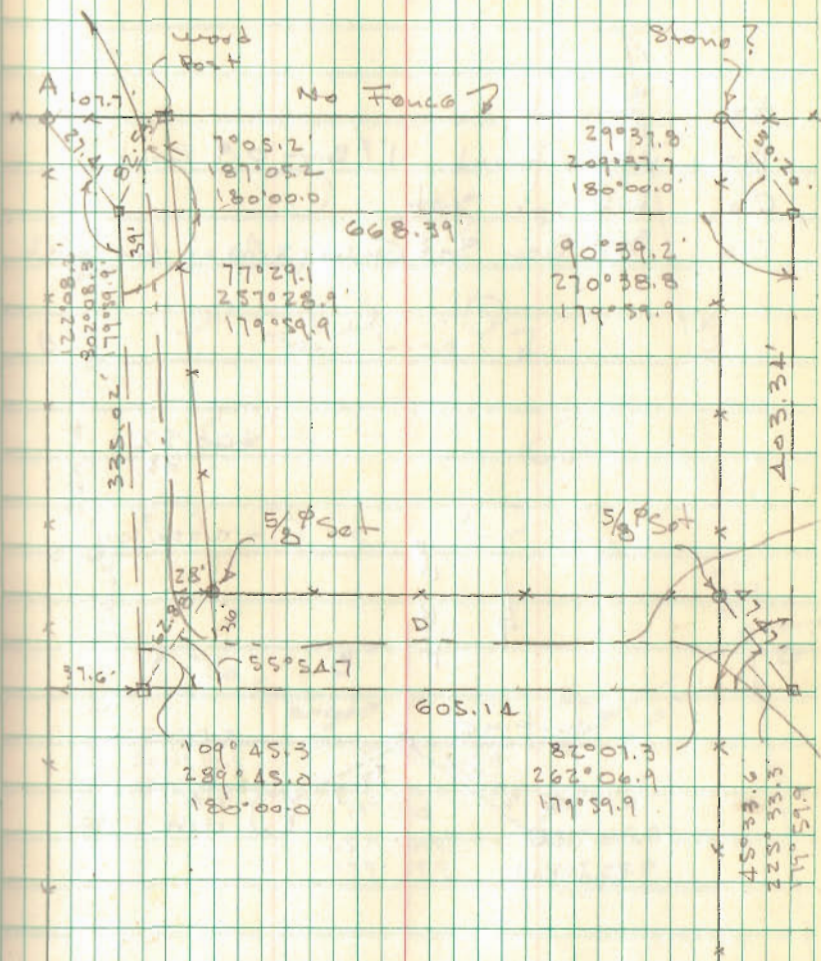
99.00

INDEXED ON MAP
4810

Dodson
Artis
McCurdy

2/19/75
50'

12



12-10-15

Lee Surveying and Mapping Co., Inc.



APPROVED

Land Surveys • Topography • Subdivisions • Construction Layout

117 N. Madriver St.
Bellefontaine OH 43311



Phone: (937) 593-7335
Fax: (937) 593-7444
surveys@lsminc.us

C.E. DUFF & SONS, INC. 26.454 ACRE

Lying in Virginia Military Survey 2873, Lake Township, Logan County, Ohio.

Being out of the C.E. Duff & Sons, Inc., 106.32 acre tract as deeded and described in Official Record 545, Page 480 of the Logan County Records of Deeds and being more particularly described as follows:

Commencing at stone found at the northeast corner of Virginia Military Survey 2873.

THENCE, with the north line of Virginia Military Survey 2873, S 84°-02'-14"W, a distance of 667.14 feet to a stone found.

THENCE, with the west line of the James F. Wish and Susan E. Wish, Trustees 12.629 acre tract (O.R. 354, Pg. 135), S 15°-56'-18"E, a distance of 962.61 feet to a 5/8 inch iron rod set at the true point of beginning.

THENCE with the west line of said 12.629 acre tract and a west line of the C.E. Duff & Son, Inc. 83.681 acre tract (O.R. 281, Pg. 180), S 15°-56'-18"E. a distance of 1364.09 feet to a stone found, passing a 5/8 inch iron rod found at 425.83 feet.

THENCE, with a north line of said 83.681 acre tract, S 74°-02'-46"W, a distance of 928.16 feet to a 5/8 inch iron rod set.

THENCE, N 16°-12'-03"W, a distance of 675.77 feet to a 5/8 inch iron rod set.

THENCE, N 65°-26'-13"W, a distance of 102.39 feet to a 5/8 inch iron rod set.

THENCE, N 12°-51'-32"W, a distance of 199.64 feet to a 5/8 inch iron rod set.

THENCE, N 71°-08'-20"E, a distance of 380.80 feet to a 5/8 inch iron rod set.

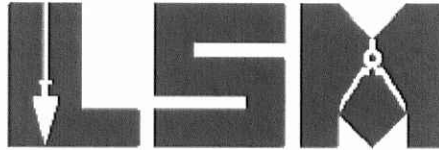
INDEXED ON MAP

4810 3D-1

Lee Surveying and Mapping Co., Inc.

Land Surveys • Topography • Subdivisions • Construction Layout

117 N. Madriver St.
Bellefontaine OH 43311



Phone: (937) 593-7335
Fax: (937) 593-7444
surveys@lsminc.us

THENCE, N 15°-54'-57"W, a distance of 385.87 feet to a 5/8 inch iron set.

THENCE, N 72°-26'-40"E, a distance of 618.18 feet to the point of beginning.

Containing 26.454 acres.

This parcel is to be attached to an adjoining tract of land and is not to be used as a separate and independent parcel.

Property is subject to any and all previous easements and rights-of-way of record.

The basis for bearings is the north line of Virginia Military Survey 2873, being S 84°-02'-14"W, and all other bearings are from angles and distances measured in a field survey by Lee Surveying and Mapping Co., Inc. on December 3, 2015.

Description prepared by:

A handwritten signature in black ink that reads "William K. Bruce". The signature is written in a cursive style.

William K. Bruce
Professional Surveyor 7437
December 3, 2015



L-60281015

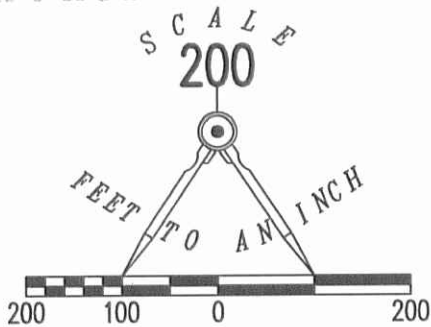
INDEXED ON MAP

4810 3D-2

12-10-15



APPROVED



BASIS FOR BEARINGS
S 84°02'14" W 667.14'
V.M.S. 3324
V.M.S. 2873

JAMES F. WISH AND SUSAN E. WISH, TRUSTEES
12.629 ACRE TRACT
O.R. 354, PG. 135

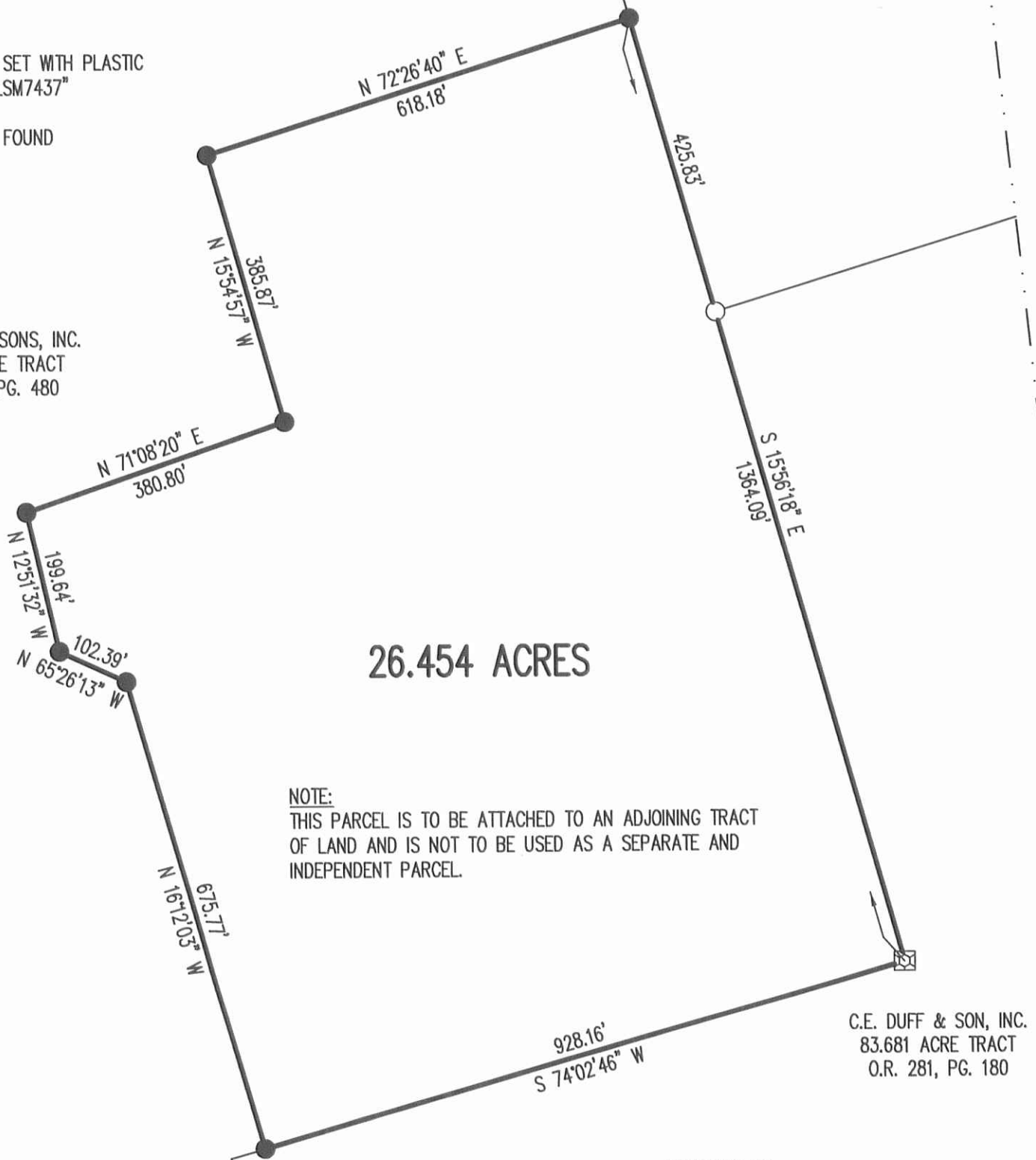
V.M.S. 3317
V.M.S. 2873

A SURVEY OF A 26.454
ACRE TRACT OUT OF THE
C.E. DUFF & SONS, INC.
106.32 ACRE TRACT
OFFICIAL RECORD 545, PAGE 480
VIRGINIA MILITARY SURVEY 2873
LAKE TOWNSHIP
LOGAN COUNTY, OHIO

LEGEND

- 5/8 INCH IRON ROD SET WITH PLASTIC I.D. CAP STAMPED "LSM7437"
- 5/8 INCH IRON ROD FOUND
- ⊠ STONE FOUND

C.E. DUFF & SONS, INC.
106.32 ACRE TRACT
O.R. 545, PG. 480



26.454 ACRES

C.E. DUFF & SON, INC.
83.681 ACRE TRACT
O.R. 281, PG. 180

INDEXED ON MAP
4810 3P



SURVEYED BY:

William K. Bruce
WILLIAM K. BRUCE
PROFESSIONAL SURVEYOR 7437
DECEMBER 3, 2015

COPYRIGHT 2015 BY:

LEE SURVEYING & MAPPING CO., INC.
117 North Madriver Street
BELLEFONTAINE, OHIO 43311
(937) 593-7335
WWW.LSMINC.US
surveys@lsminc.us



CALL TOLL FREE 800-362-2764

OHIO UTILITIES PROTECTION SERVICE

ADW D1015 60281015 L-6028-3