

Lee Surveying and Mapping Co., Inc.

Land Surveys • Topography • Subdivisions • Construction Layout

117 N. Madriver St.
Bellefontaine OH 43311



Phone: (937) 593-7335
Fax: (937) 593-7444

HARMAN 58.326

Lying in Section 33, Town 4, Range 14, Lake Township, Logan County, Ohio.

Being all of the Lloyd Harman original 57.82 acre tract as deeded and described in Official Record 395, Page 710 of the Logan County Records of Deeds and being more particularly described as follows:

Beginning at a resurvey monument found at the northwest corner of Section 33 at the intersection of the center-lines of County Highway 11 (Lake Avenue) and Township Road 216 (Troy Road.)

THENCE, with the west line of Section 33 and the centerline of Township Road 216 (35 feet wide), S 00°-30'-34" W, a distance of 2642.70 feet to a 5/8 inch rod set at the TRUE POINT OF BEGINNING.

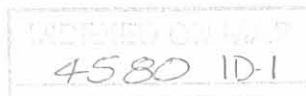
THENCE, with the southerly line of the Joe A. Burkhammer 1.00 acre (Vol. 378, Pg. 140), S 89°-28'-56" E, a distance of 233.46 feet to an 1/2 inch iron pipe found.

THENCE, with the easterly lines of the said 1.00 acre tract, the Clayton C. Hursh, Jr. 1.00 acre tract (Vol. 299, Pg. 418), the Charles M. Barton, Jr. 1.00 acre tract (Vol. 300, Pg. 130), the Gregory A. Levan 1.00 acre tract (O.R. 34, Pg. 362), the Bryron H. Roll 1.00 acre tract (O.R. 239, Pg. 724), the William Lee Ward 1.00 acre tract (Vol. 339, Pg. 933), the Steve R. Ault 1.00 acre tract (O.R. 193, Pg. 541), N 00°-28'-53" E, a distance of 1315.80 feet to a 5/8 inch iron rod set.

THENCE, with south line of the City of Bellefontaine original 43.06 acre tract (O.R. 349, Pg. 806), with the Bellefontaine Corporation Limit, and the southerly line of the Gerald L. Price original 17.89 acre tract (O.R. 199, Pg. 837), S 89°-18'-16" E, a distance of 2072.48 feet to a 5/8 inch iron rod set, passing a 5/8 inch iron rod set at 2058.16 feet.

THENCE, with the original west right-of-way line of County Highway 18 (60 feet wide) and said line extended, S 02°-22'-22" E, a distance of 593.67 feet to a 5/8 inch iron rod set.

THENCE, with the center-line of County Highway 18 (variable width), S 37°-08'-33" W, a distance of 681.83 to a MAG nail set.



Lee Surveying and Mapping Co., Inc.

Land Surveys • Topography • Subdivisions • Construction Layout

117 N. Madriver St.
Bellefontaine OH 43311



Phone: (937) 593-7335
Fax: (937) 593-7444

THENCE, with the lines of the Harrison Grange No. 378, Inc., 1.00 acre tract (O.R. 121, Pg. 248), the following two courses:

S 89°-37'-36" W, a distance of 287.19 feet to a 5/8 inch iron rod found, passing a 5/8 inch iron rod set at 37.82 feet.

S 14°-39'-45" W, a distance of 186.64 feet to a railroad tie post found.

THENCE, with the north line of the Jo Anne Harman original 70.355 acre tract (O.R. 311, Pg. 164), N 89°-18'-50" W, a distance of 1595.52 feet to a resurvey monument found at the southwest corner of the northwest quarter of Section 33.

THENCE, with the west line of Section 33, N 00°-30"-34" E, a distance of 11.51 feet to the POINT OF BEGINNING

Containing 58.326 acres, of which 1.055 acres are within the highway right-of-way.

The basis for bearings is the west line of Section 33, being S 00°-30'-34" W, and all other bearings are from angles and distances measured in a field survey by Lee Surveying and Mapping Co., Inc. on January 4, 2000.

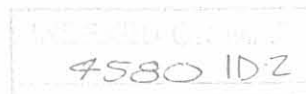
Description prepared by:

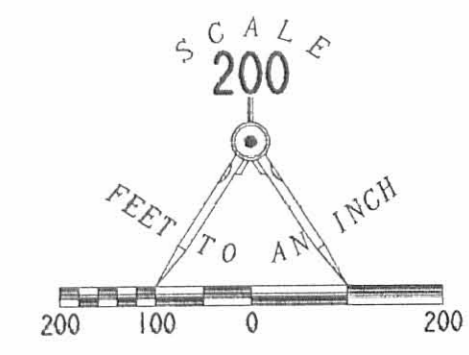
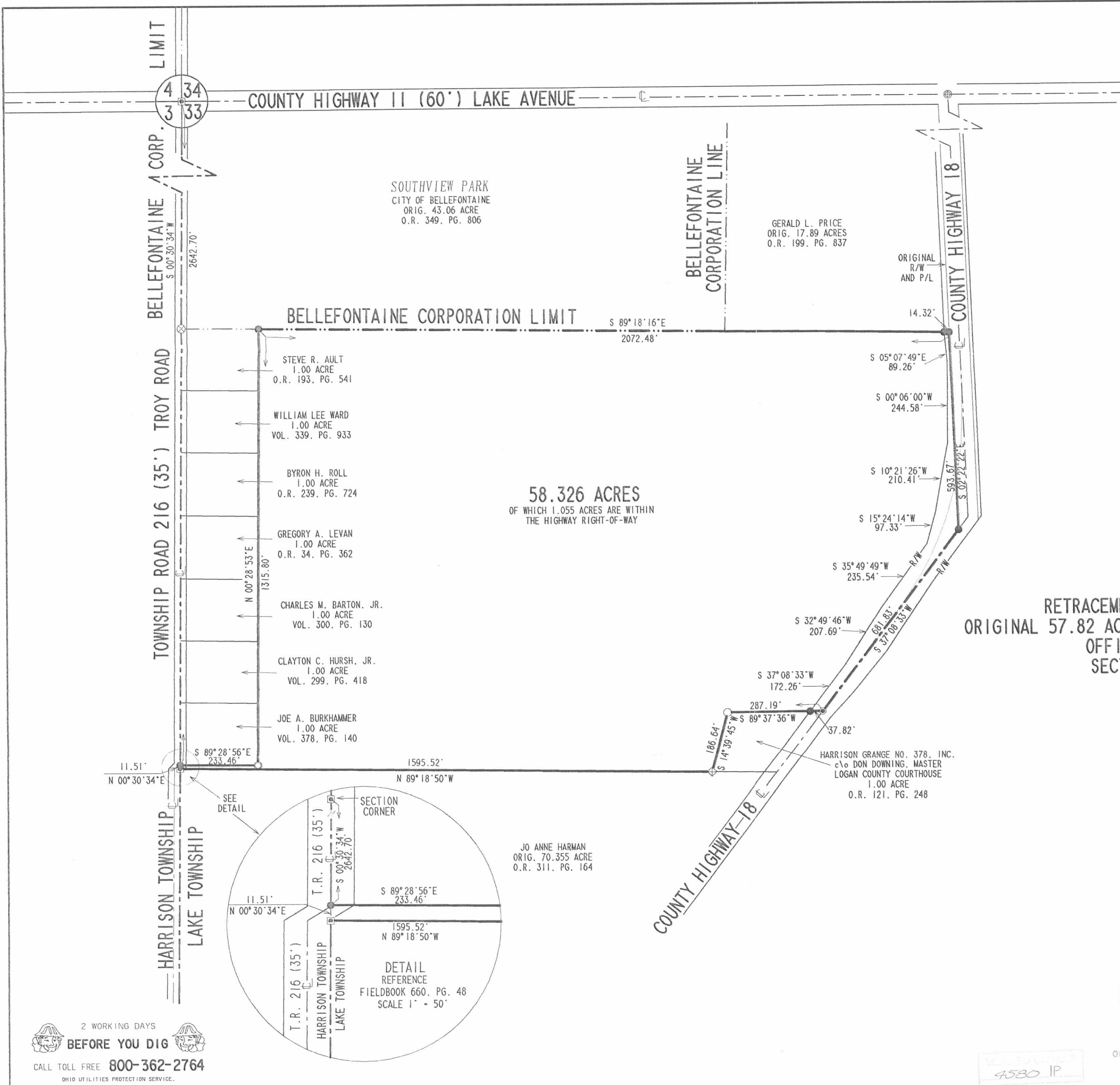
A handwritten signature in black ink, appearing to read 'Jeffrey J. Lee', is written over a faint circular stamp.

Jeffrey J. Lee
Professional Surveyor 6359
January 19, 2000



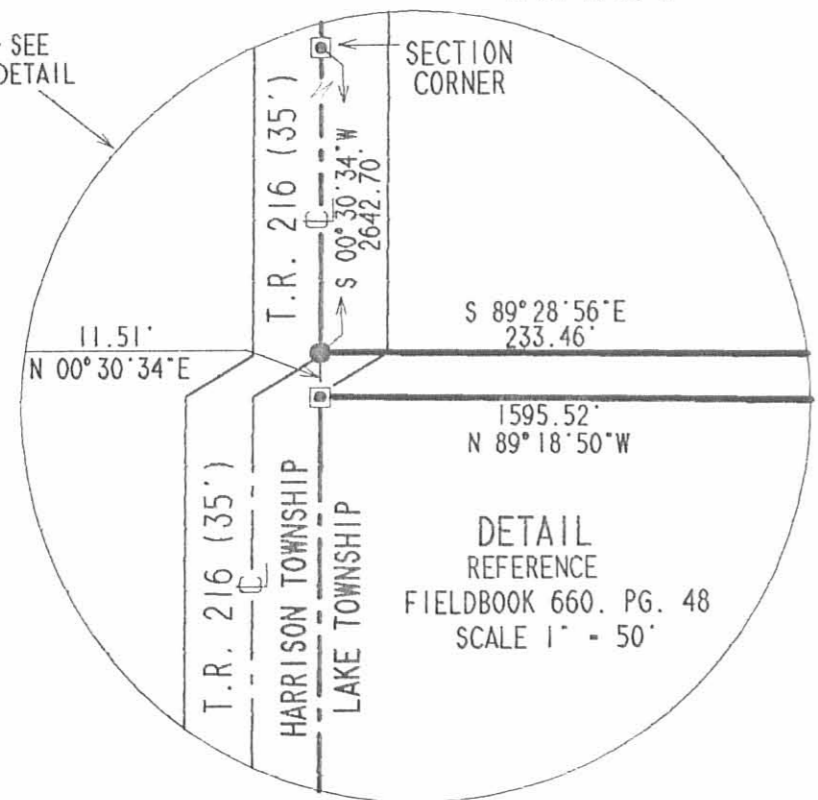
L-2863





- LEGEND**
- 5/8 INCH IRON ROD SET
 - 5/8 INCH IRON ROD FOUND
 - ⊙ MAG NAIL SET
 - ⊕ RAILROAD TIE POST FOUND
 - ⊞ RESURVEY MONUMENT FOUND
 - 1/2 INCH PIPE FOUND
 - ⊗ 3/4 INCH IRON ROD FOUND
 - ⊗ RAILROAD SPIKE FOUND

RETRACEMENT SURVEY OF THE LLOYD HARMAN ORIGINAL 57.82 ACRE TRACT (58.326 ACRES BY THIS SURVEY) OFFICIAL RECORD 395, PAGE 710 SECTION 33, TOWN 4, RANGE 14 LAKE TOWNSHIP LOGAN COUNTY, OHIO



JO ANNE HARMAN
ORIG. 70.355 ACRE
O.R. 311, PG. 164

GERALD L. PRICE
ORIG. 17.89 ACRES
O.R. 199, PG. 837

HARRISON GRANGE NO. 378, INC.
c/o DON DOWNING, MASTER
LOGAN COUNTY COURTHOUSE
1.00 ACRE
O.R. 121, PG. 248



SURVEYED BY:
Jeffrey I. Lee
JEFFREY I. LEE
PROFESSIONAL SURVEYOR 6359
JANUARY 4, 2000

COPYRIGHT 2000 BY:
LEE SURVEYING & MAPPING CO., INC.
117 North Madriver Street
BELLEFONTAINE, OHIO 43311
(937) 593-7335

2 WORKING DAYS
BEFORE YOU DIG
CALL TOLL FREE 800-362-2764
OHIO UTILITIES PROTECTION SERVICE.

4530 IP

ORIGINAL STAMP IN GREEN

HARMON to HARRISON GRANGE

JUNE, 1969

Being situated in Section 33, Town 4, Range 14, M.R.S.; of
Lake Township, Logan County, Ohio.

Beginning at a iron in the center of County Road #18 at the
southeast corner of Loyd Harmon's 57.94 acre tract. (See County
Engineer's Field Book 702, page 62.)

Thence with the south line of said Harmon 57.94 acre tract
N 85°-34'W 194.0 feet to a corner post.

Thence N 18°-05'E 187.0 feet to a iron.

Thence S 86°-42'E 286.4 feet to a iron in the center of
County Road #18.

Thence with the center of County Road #18 S 40°-30'W 231.8
feet to the place of beginning.

Containing 1.00 acres more or less. Being surveyed from
a 57.94 acre tract.

Owen K. Shirk

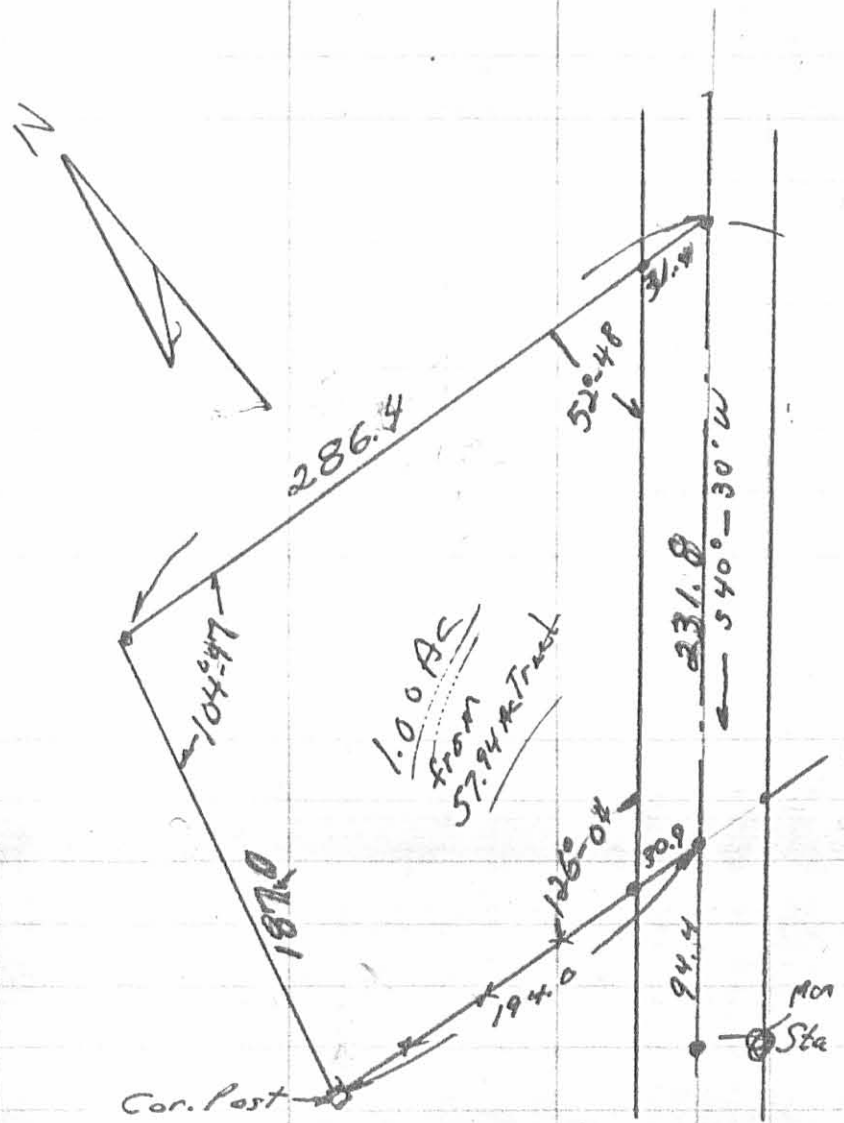
Surveyor 4271

217

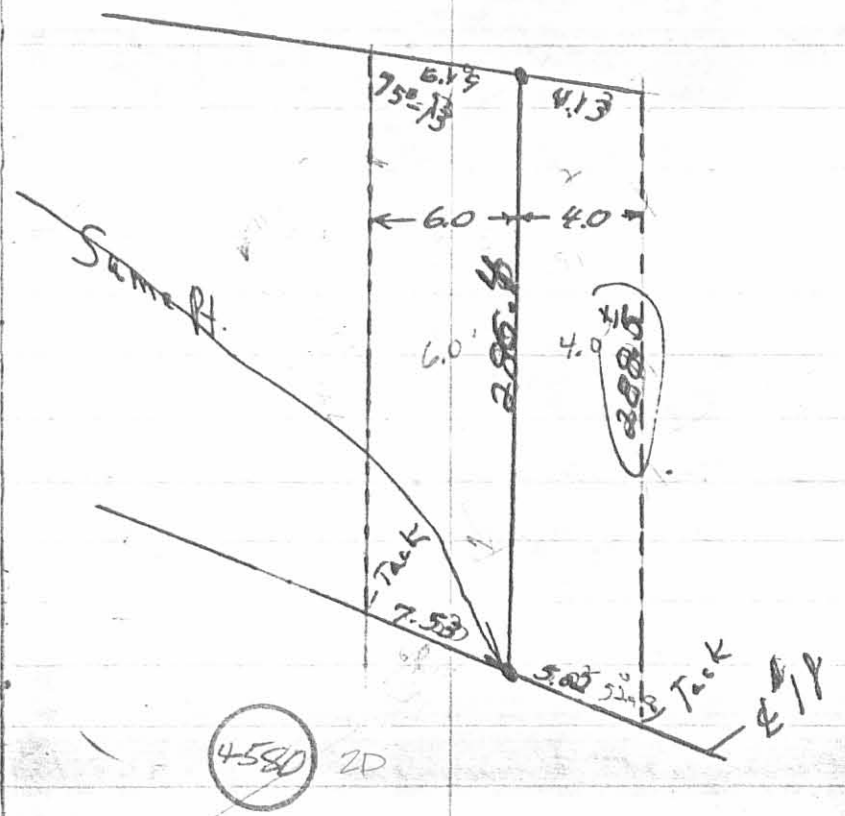
4580

INDEXED ON MAP

Mr. Loyd Harmon
 Sec 33, Town 4; Range 14, MRS
 LAKE TWP



June 16, 69 F.B.O.K.S. 12 P. 52



101 + 76.2 - See Co. Engr. FB. 702; pg 62

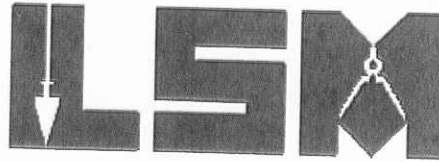
2-17-17

Lee Surveying and Mapping Co., Inc.



Land Surveys • Topography • Subdivisions • Construction Layout

117 N. Madriver St.
Bellefontaine OH 43311



Phone: (937) 593-7335
Fax: (937) 593-7444
surveys@lsminc.us

HARMAN 35.349 ACRES

Lying in Section 33, Town 4, Range 14, Lake Township, Logan County, Ohio.

Being out of the Charles Alan Harman 58.326 acre tract as deeded and described in Official Record 1241, Page 200 of the Logan County Records of Deeds and being more particularly described as follows:

Commencing on a resurvey monument found in a monument box on the northwest corner of Section 33 at the intersection of the center-lines of County Highway 11 (Lake Avenue) and Township Road 216 (Troy Road).

THENCE, with the west line of Section 33 and the center-line of Township Road 216 (35 feet wide), S 00°-28'-53" W, a distance of 1326.18 feet to a railroad spike found.

THENCE, with the south line of the City of Bellefontaine 43.06 acre tract (O.R. 349, Pg. 806) and a south line of the Bellefontaine Corporation line, S 89°-18'-16"E, a distance of 690.18 feet to a 5/8 inch iron rod set at the TRUE POINT OF BEGINNING.

THENCE, with the south lines of the said 43.06 acre tract and Bellefontaine Corporation line and the Gerald L. Price 14.099 acre tract (O.R. 1234, Pg. 854, Parcel II), S 89°-18'-16"E, a distance of 1614.48 feet to a 5/8 inch iron rod found on the original right-of-way of County Highway 18, passing a 5/8 inch iron rod found on the present right-of-way of County Highway 18 (variable widths) at 1599.66 feet.

THENCE, with the original west right-of-way of County Highway 18 and within the present highway right-of-way, S 02°-22'-22"E, a distance of 593.67 feet to a 5/8 inch iron rod found on the center-line of County Highway 18.

THENCE, with the center-line of County Highway 18, S 37°-08'-33"W, a distance of 517.68 feet to a MAG nail set.

THENCE, S 89°-06'-02"W, a distance of 566.70 feet to a 5/8 inch iron rod set, passing a 5/8 inch iron rod set on the present right-of-way of County Highway 18 at 38.09 feet.

MEMBER: NATIONAL SOCIETY OF PROFESSIONAL SURVEYORS (NSPS)
PROFESSIONAL LAND SURVEYORS OF OHIO (PLSO)

INDEXED ON MAP
4500 3D-1

Lee Surveying and Mapping Co., Inc.

Land Surveys • Topography • Subdivisions • Construction Layout

117 N. Madriver St.
Bellefontaine OH 43311



Phone: (937) 593-7335
Fax: (937) 593-7444
surveys@lsminc.us

THENCE, N 72°-49'-03"W, a distance of 293.11 feet to a 5/8 inch iron rod set.

THENCE, N 89°-21'-08"W, a distance of 464.80 feet to a 5/8 inch iron rod set.

THENCE, N 00°-54'-29"W, a distance of 942.60 feet to the point of beginning.


Containing 35.349 acres, of which 0.947 acre is within the highway right-of-way.

Property is subject to any and all previous easements and rights-of-way of record.

The basis for bearings is the west line of Section 33, being S 00°-28'-53"W, and all other bearings are from angles and distances measured in a field survey by Lee Surveying and Mapping Co., Inc. on February 14, 2017.



Description prepared by:


Jeffrey I. Lee
Professional Surveyor 6359
February 15, 2017

ORIGINAL STAMP IN GREEN

28630217

INDEXED ON MAP
4580 3D-2

2-17-17

APPROVED

4 34
3 33

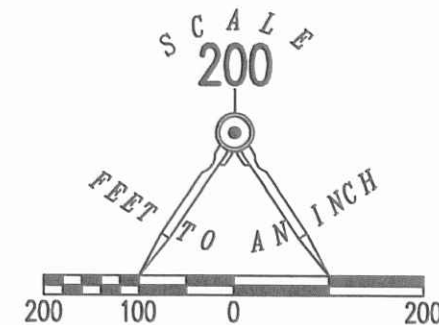
COUNTY HIGHWAY 11 LAKE AVENUE

SOUTHVIEW PARK
CITY OF BELLEFONTAINE
43.06 ACRES
O.R. 349, PG. 806

BELLEFONTAINE
CORPORATION LINE

GERALD L. PRICE
14.099 ACRES
O.R. 1234, PG. 854
PARCEL II

ORIGINAL
R/W & P/L



LEGEND:

- ☐ RESURVEY MONUMENT FOUND IN A MONUMENT BOX
- ⊗ RAILROAD SPIKE FOUND
- MAG NAIL SET
- 5/8 INCH IRON ROD FOUND
- 5/8 INCH IRON ROD SET WITH PLASTIC I.D. CAP STAMPED "LSM"

(BASIS FOR BEARINGS)
S 00°28'53" W

TOWNSHIP ROAD 216 (35') TROY ROAD

S 89°18'16" E
690.18'

BELLEFONTAINE CORPORATION LINE

S 89°18'16" E
1614.48'

14.82'

593.67'

S 02°22'22" E

35.349 ACRES

OF WHICH 0.947 ACRE IS WITHIN
THE HIGHWAY RIGHT-OF-WAY

CHARLES ALAN HARMAN
58.326 ACRES
O.R. 1241, PG. 200

N 00°54'29" W
942.60'

464.80'
N 89°21'08" W

293.11'
N 72°49'03" W

566.70'
S 89°06'02" W

38.09'

517.88'
S 37°08'33" W



ORIGINAL STAMP IN GREEN

SURVEY OF 35.349 ACRES OUT OF THE
CHARLES ALAN HARMAN
58.326 ACRE TRACT
OFFICIAL RECORD 1241, PAGE 200
SECTION 33, TOWN 4, RANGE 14
LAKE TOWNSHIP
LOGAN COUNTY, OHIO

SURVEYED BY:

JEFFREY I. LEE
PROFESSIONAL SURVEYOR 6359
FEBRUARY 14, 2017

COPYRIGHT 2017 BY:
LEE SURVEYING & MAPPING CO., INC.
117 North Madriver Street
BELLEFONTAINE, OHIO 43311
(937) 593-7335
WWW.LSMINC.US
surveys@lsminc.us

KSS D0217 28630217 L-2863-3

THIS SURVEY WAS PREPARED IN THE ABSENCE OF
A COMPLETE AND ACCURATE TITLE SEARCH AND
DOES NOT GUARANTEE TITLE.

2 WORKING DAYS



BEFORE YOU DIG

CALL TOLL FREE 800-362-2764

OHIO UTILITIES PROTECTION SERVICE

(VARIABLE RIGHT-OF-WAY WIDTHS)
COUNTY HIGHWAY 18

INDEXED ON MAP
4500 3P