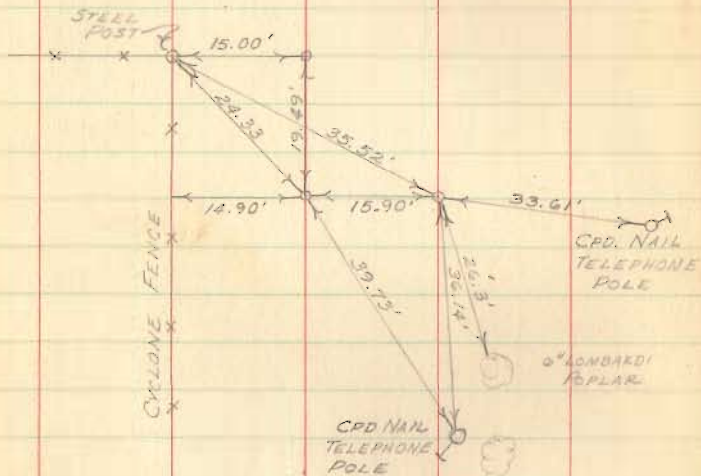


C.H. No. 245  
LAKE TWP.

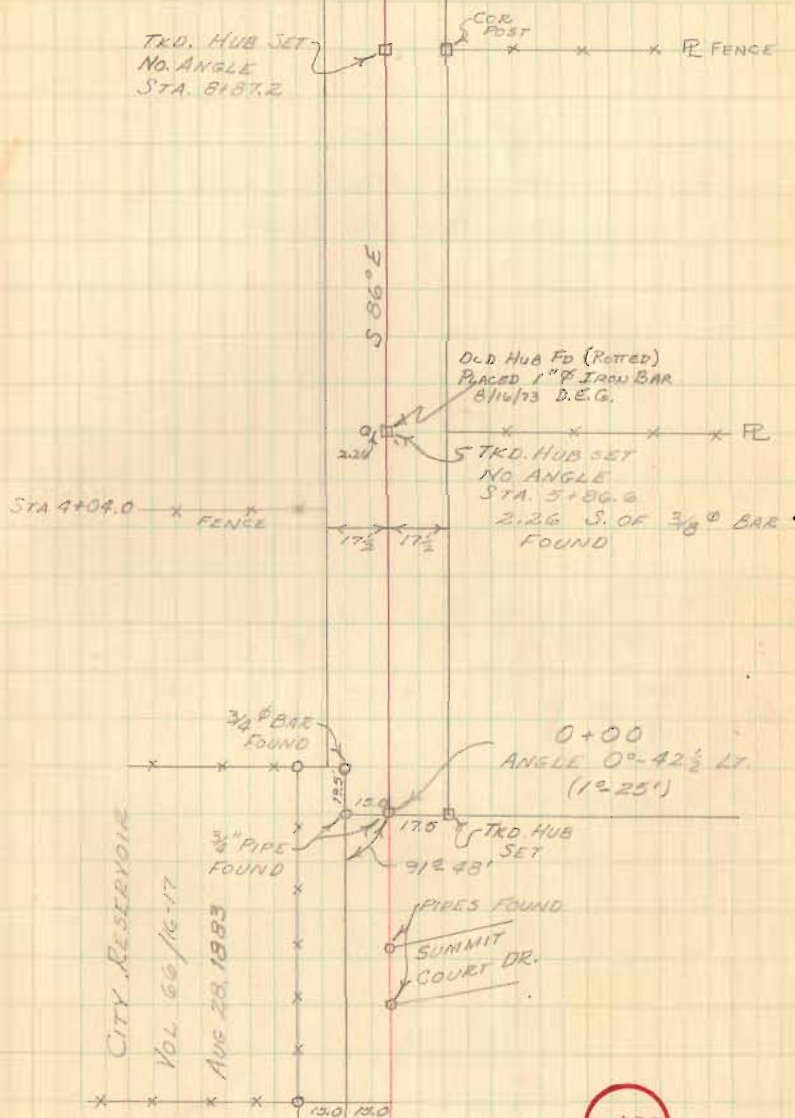
HAMER ROAD  
C.H. No 245 - 35' R/W  
SURVEYED 1904



DODSON  
GILBERT  
TEVIS

MAY 18, 1959  
70°

50



3475

INDEXED ON MAP

C.H. No. 245

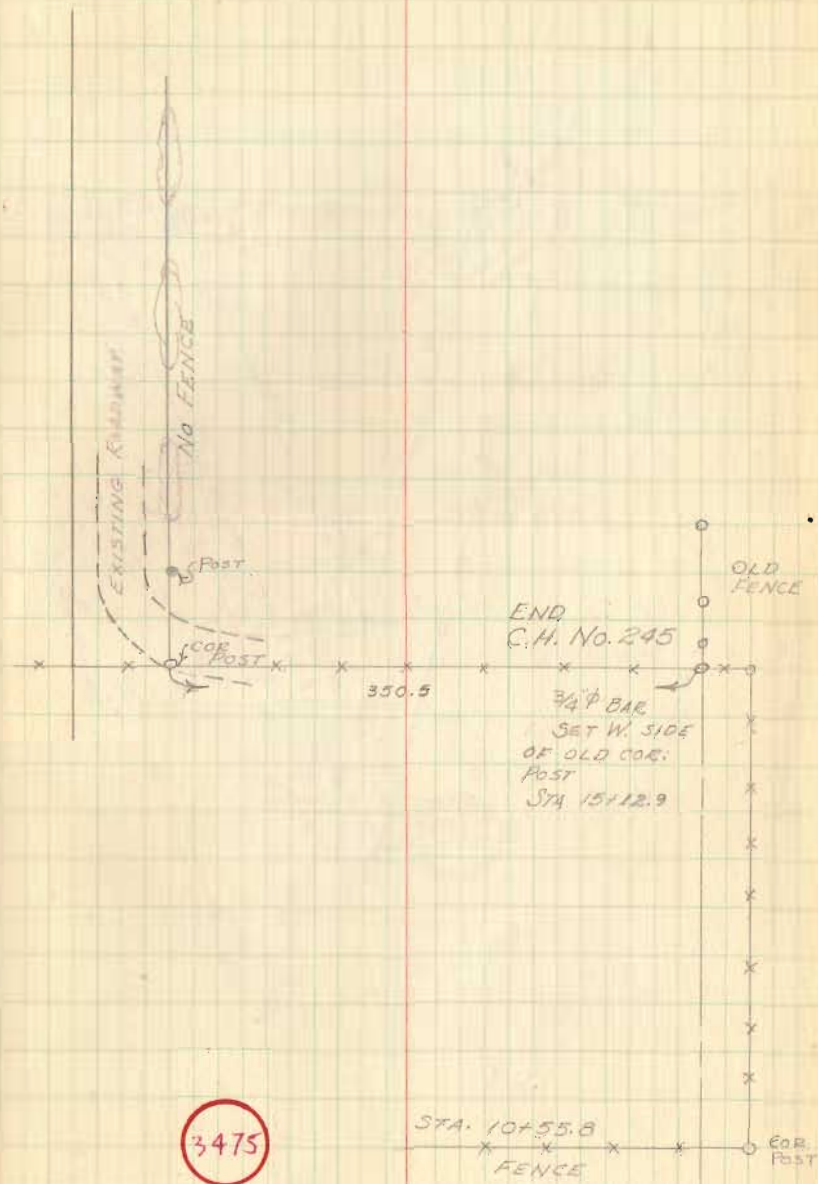
C.H. No. 245

VACATED MARCH 9, 1935

SEE FILE RD. # 245

MAY 13, 1959

51



INDEXED ON MAP