

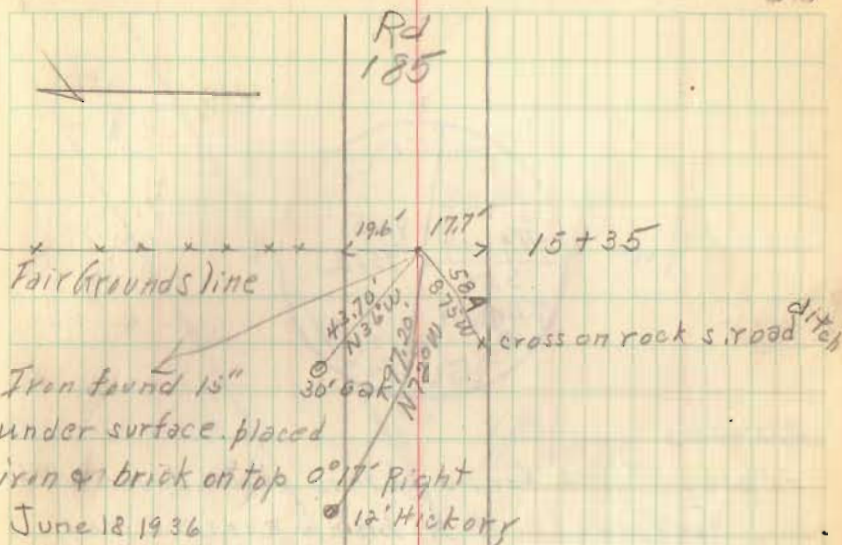


3/22/43 Found harrow tooth, with broken brick placed about it, driven level with surface of road, at point indicated in Book 511-23. Immediately North of and approx. 0.8' below surface of road, re-encasing rod  $\frac{1}{2}$ " x 15" was found. Some pieces of broken rock about 3" dia. irregular shape was found near said rod but not considered in any way as identifying marks. Approx. 0.9' North of the above mentioned marks an iron bar  $1\frac{1}{4}$ " x 15" was found about 22" below surface of road, having been driven directly over a large pointed rock 12" dia.

This man was removed when sewer was placed on Lake Ave

copied from  
Field Book 511 R23

52



June 18 1936

F. Wright

E. Core

G. W. Tavis

J. Montgomery

Iron 1' East of  
Fair Ground Fence line

INDEXED ON MAP

Lake

2664

Twp.

INDEXED ON MAP

S, H 189

Rt 68