



3/22/43

Found 0.1' below road surface - $\frac{5}{8}$ " bolt
 15" long driven beside iron pin - 1" x 36"
 long approx. 0.5' below road surface.
 Said iron pin had been driven through 2' x 2' x 12"
 oak hub to the top of large stone approx.
 12" diameter, which was recognized a original
 section corner stone (This stone was approved
 by C.A. Inskeep, Co Eng.). Bolt, iron pin and
 hub, were removed and concrete monument
 37" long was set about 0.4' below surface
 of roadway directly over large stone
 above mentioned.

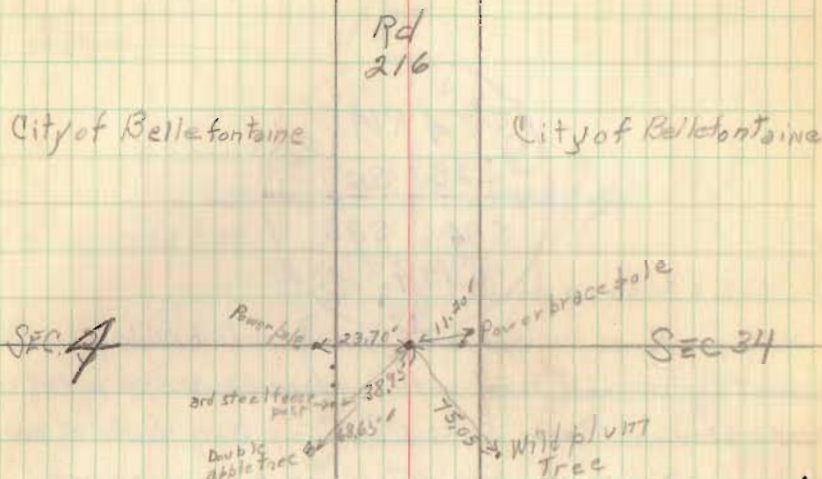
HANE KERNS

R. H. REED

MONUMENT drilled and stamped as above

3/22/43

R.M.P.



Sewage treatment
 Plant

Harrison
 Twp.

INDEXED ON MAP

Witness from Thesis

O.S.V 1943

Extension - Application of

Horizontal Control

By Corey, Harper, Morromatis

2663

Lake
 Twp

INDEXED ON MAP