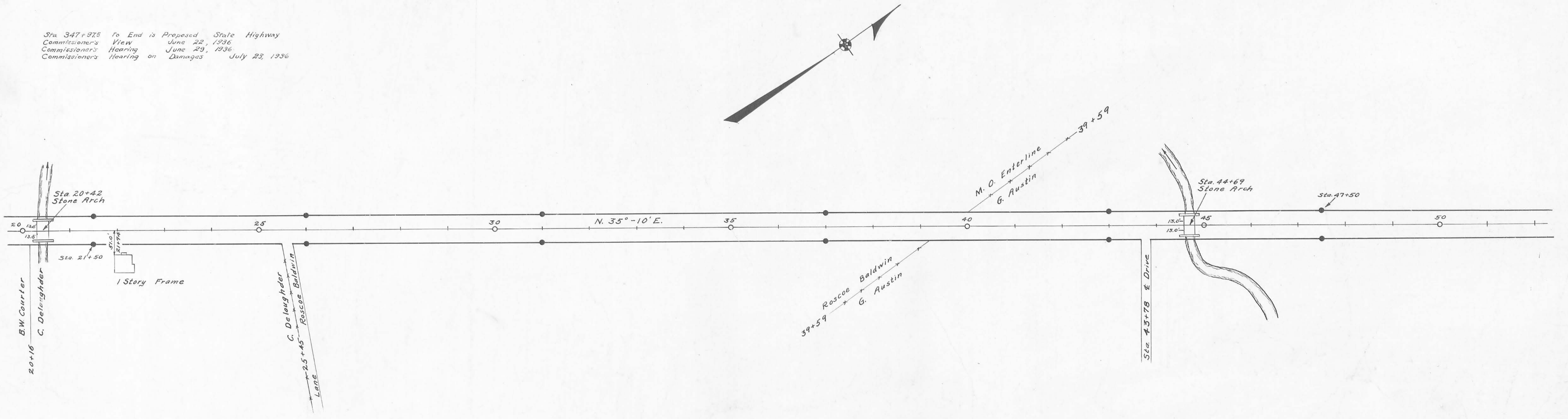


P.I. Sta. 41+63.4  
Δ = 21°-14'  
D = 12'  
T = 89.66'  
E = 8.38'  
See Plan L-22  
Logan County Engineer's Office

P.T. Sta. 51+81  
Δ = 50°-30'  
D = 20'  
T = 135.1'  
E = 30.26'  
See Plan L-22  
Logan County Engineer's Office

Bellefontaine - Rushsylvania Pike 1873 60' wide  
See Free Turnpike Record Vol. 3 Page 238  
See Map Book H Page 56  
Rushsylvania - Big Springs Pike 1874 60' wide  
See Free Turnpike Record Vol. 3 Page 348  
See Map Book H Page 58  
Concrete right-of-way monuments set as shown  
Field Notes Book 578, Logan County Engineer's Office

Sta. 347+975 To End is Proposed State Highway  
Commissioner's View June 22, 1936  
Commissioner's Hearing June 29, 1936  
Commissioner's Hearing on Damages July 23, 1936



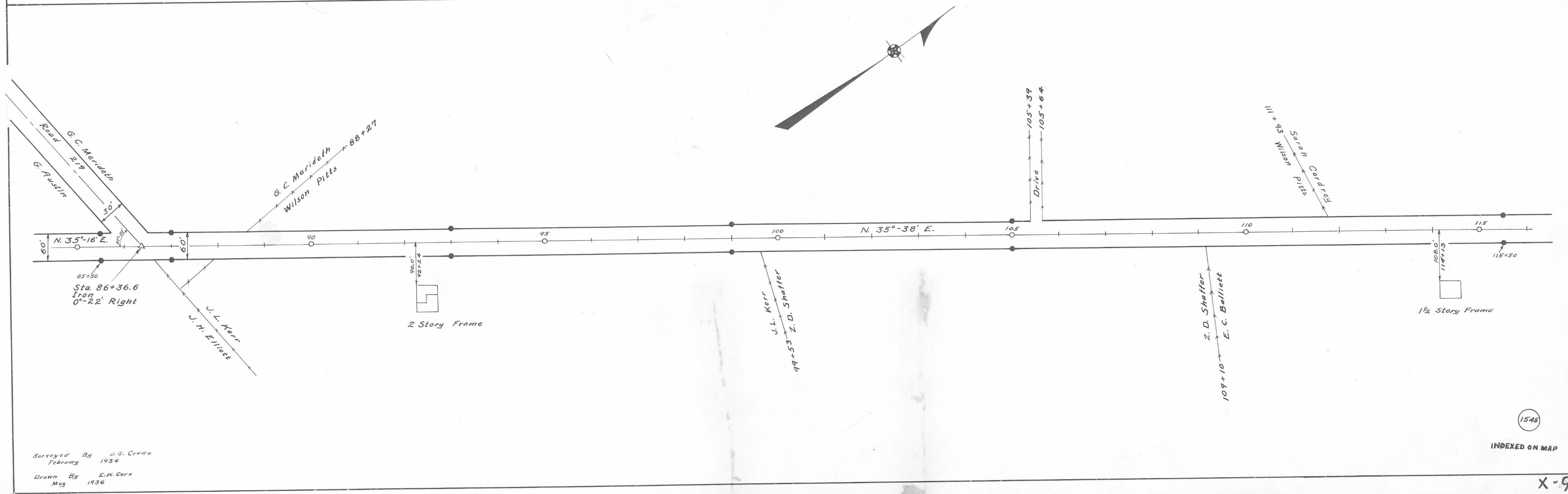
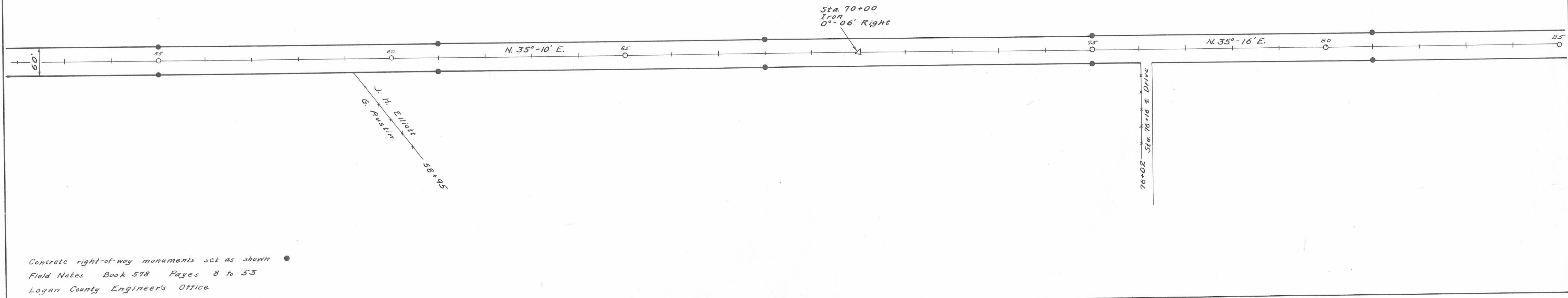
Surveyed By J.S. Crane  
February 1934  
Drawn By E.K. Corb  
May 1936

ROAD 9

X-9

X-9



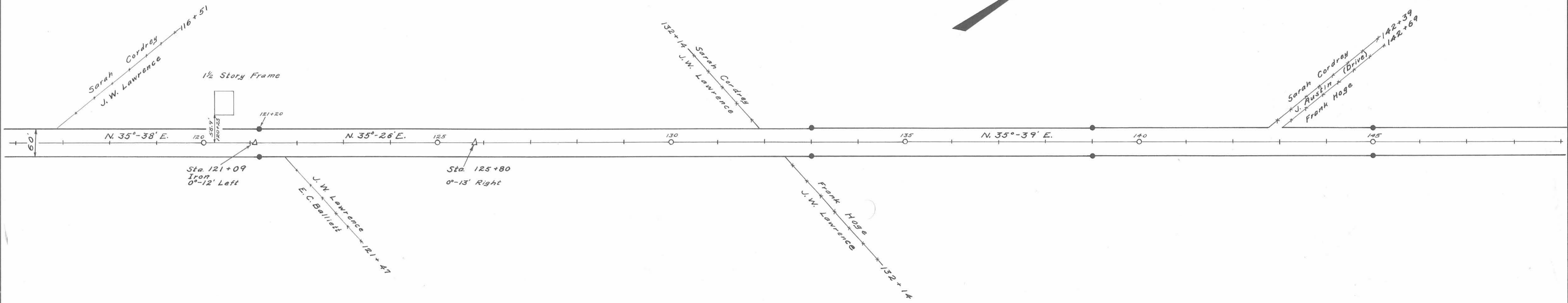
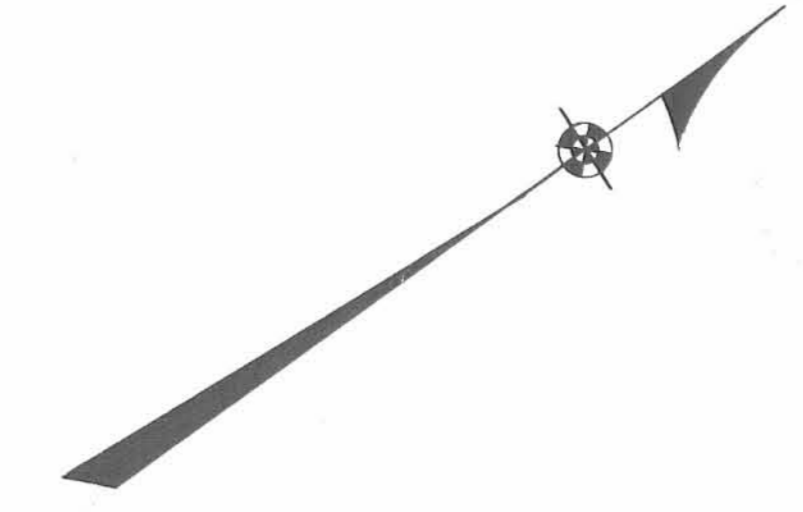


Surveyed By U.S. Crona  
 February 1934  
 Drawn By E.K. Core  
 May 1936

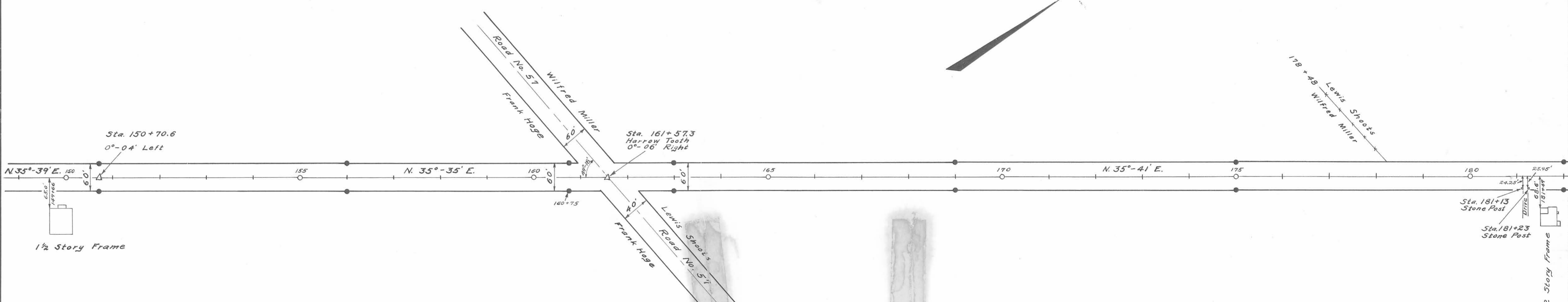
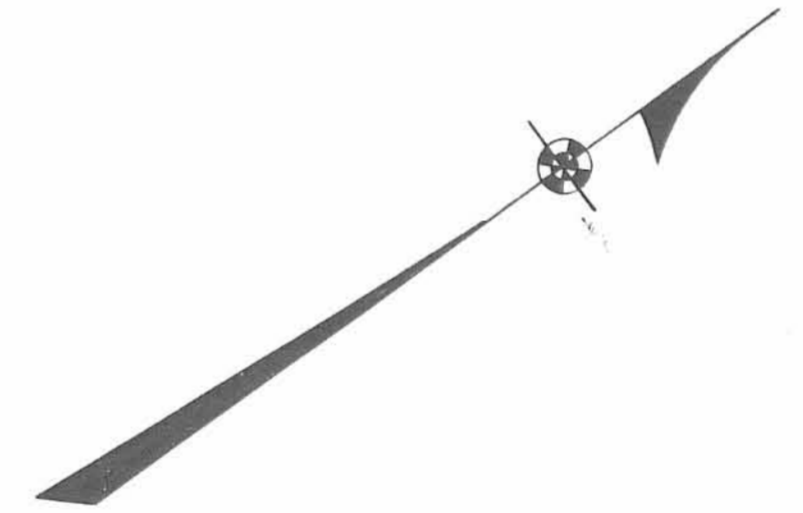
1545

INDEXED ON MAP

X-9

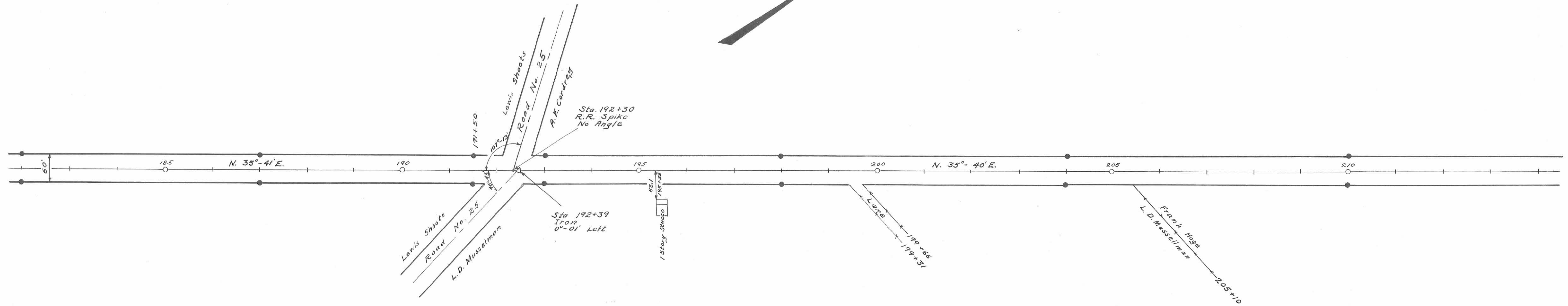


Concrete right-of-way monuments set as shown •  
Field Notes Book 578 Pages 8 to 53  
Logan County Engineers Office

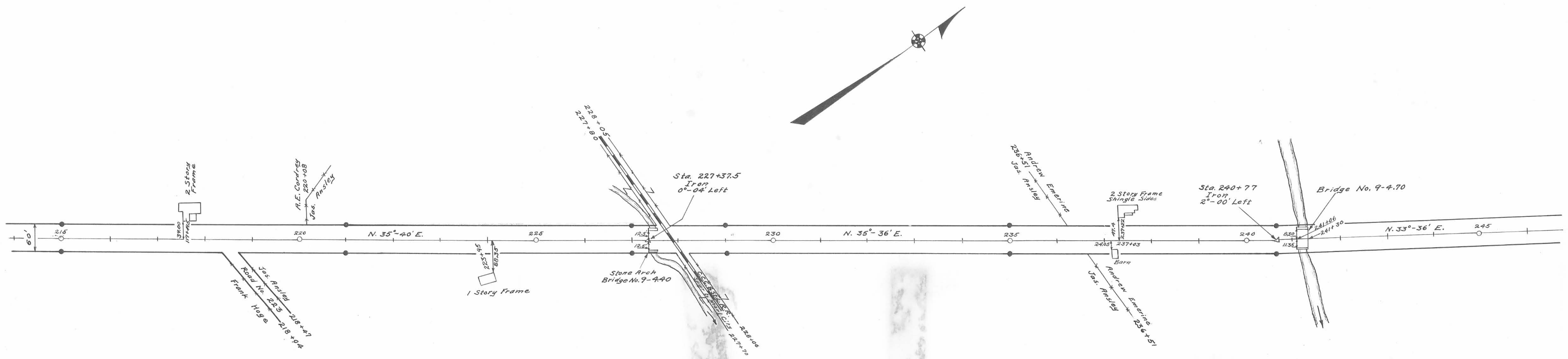


Surveyed By J.S. Crane  
March 1934  
Drawn By E.K. Core  
May 1936

1545  
INDEXED ON MAP

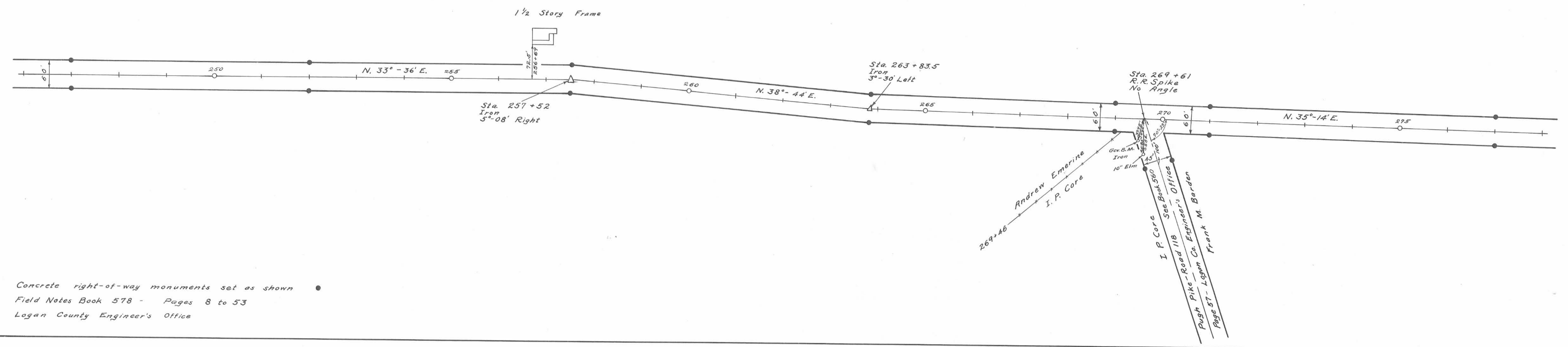


Concrete right-of-way monuments set as shown ©  
Field Notes Book 578 Pages 8 to 53  
Logan County Engineers Office

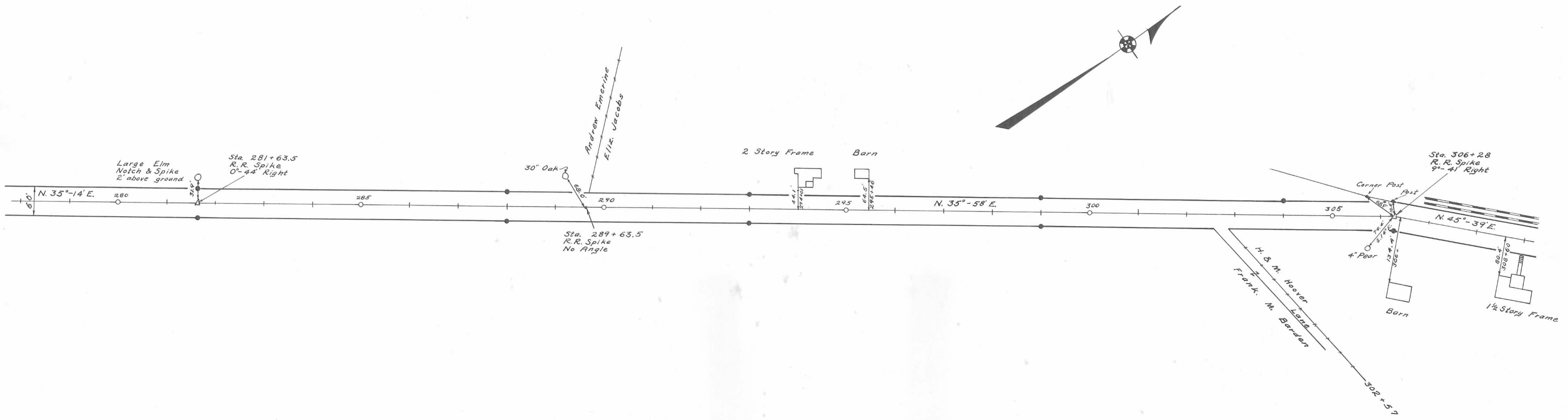


Surveyed By U.S. Crane & F.F. Wright  
March 1934  
Drawn By F.F. Wright & E.K. Core  
May 1936

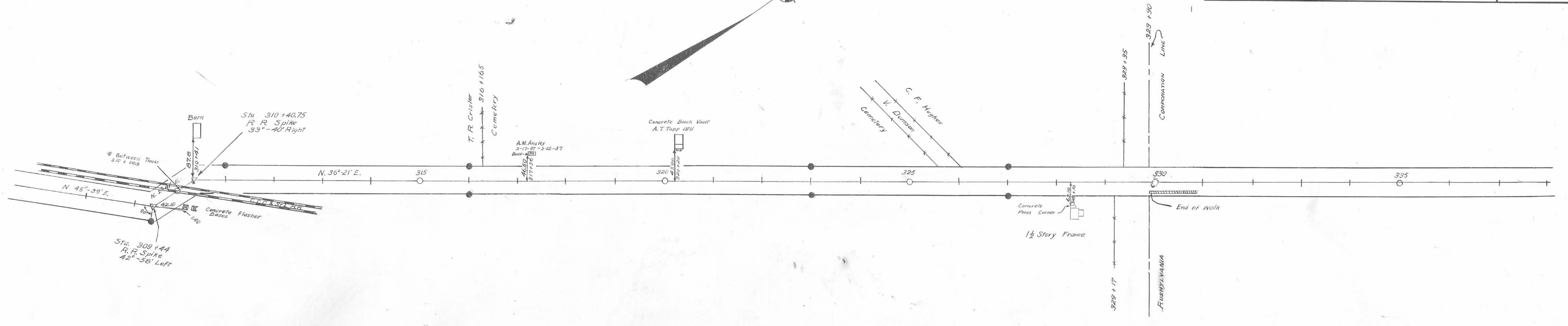




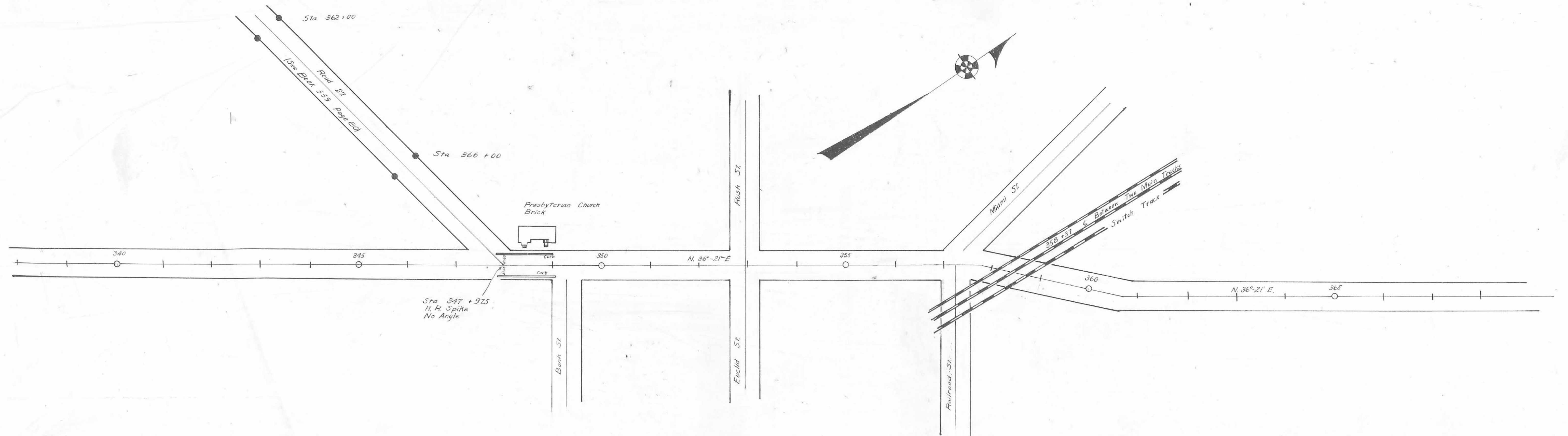
Concrete right-of-way monuments set as shown  
 Field Notes Book 578 - Pages 8 to 53  
 Logan County Engineer's Office



Surveyed By F. F. Wright  
 March 1934  
 Drawn By E. K. Core  
 May 1936

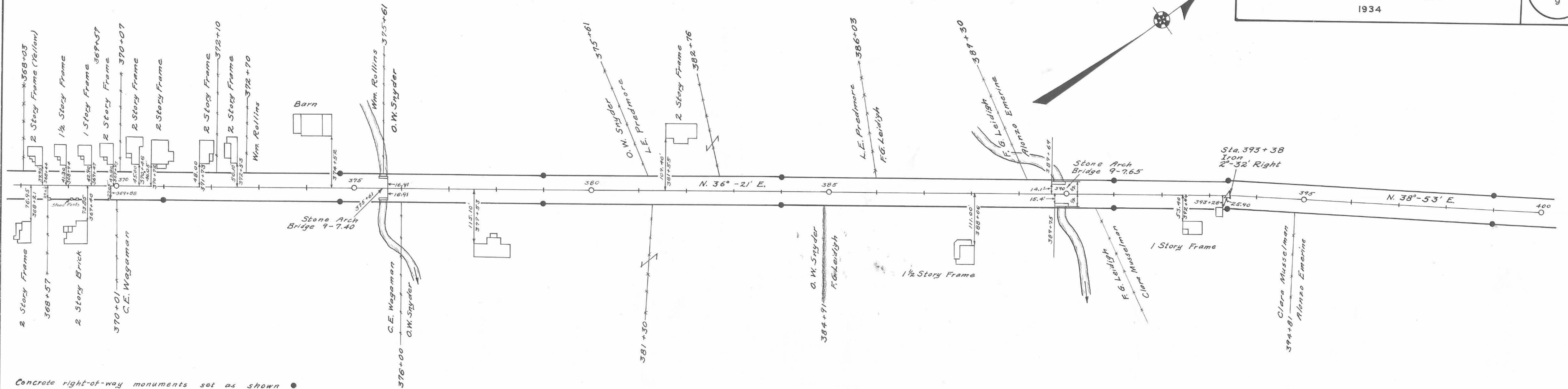


Concrete Right of Way Markments Set as Shown  
Field Notes Book 578 Pages 8 to 53  
Logan County Engineer's Office

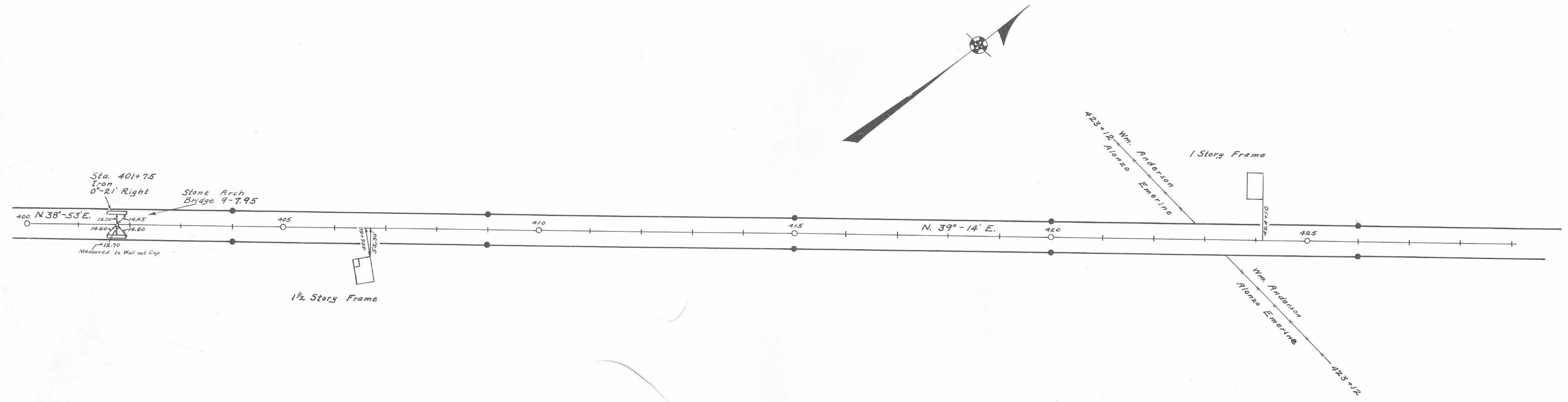


Surveyed By R. F. Wright  
March 1934  
Drawn By E. K. Cere  
June 1936

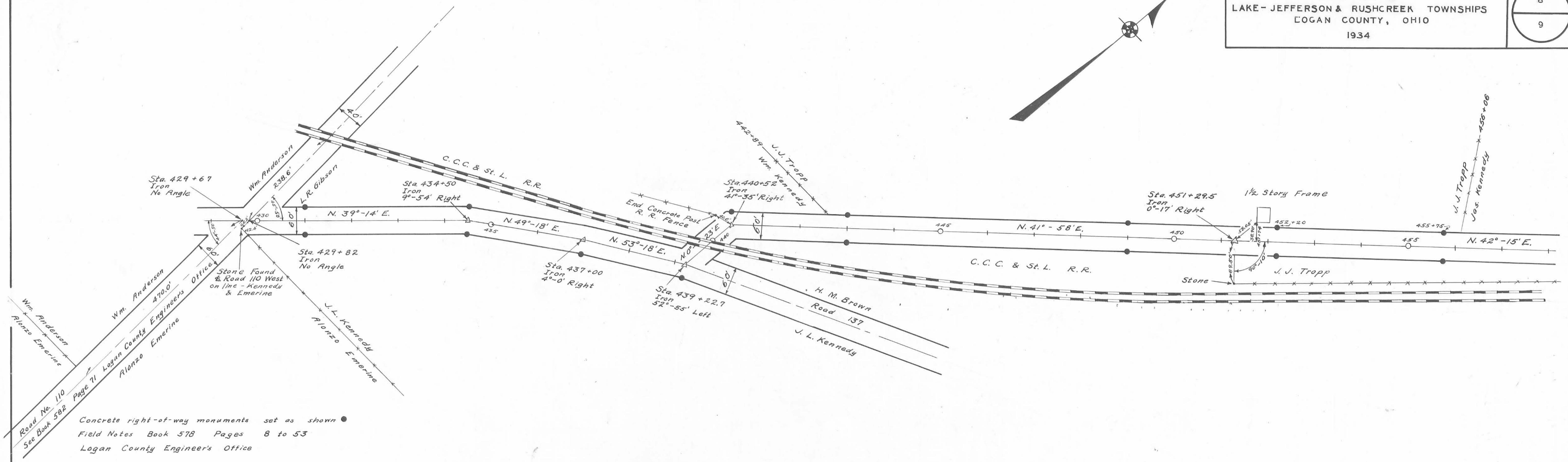




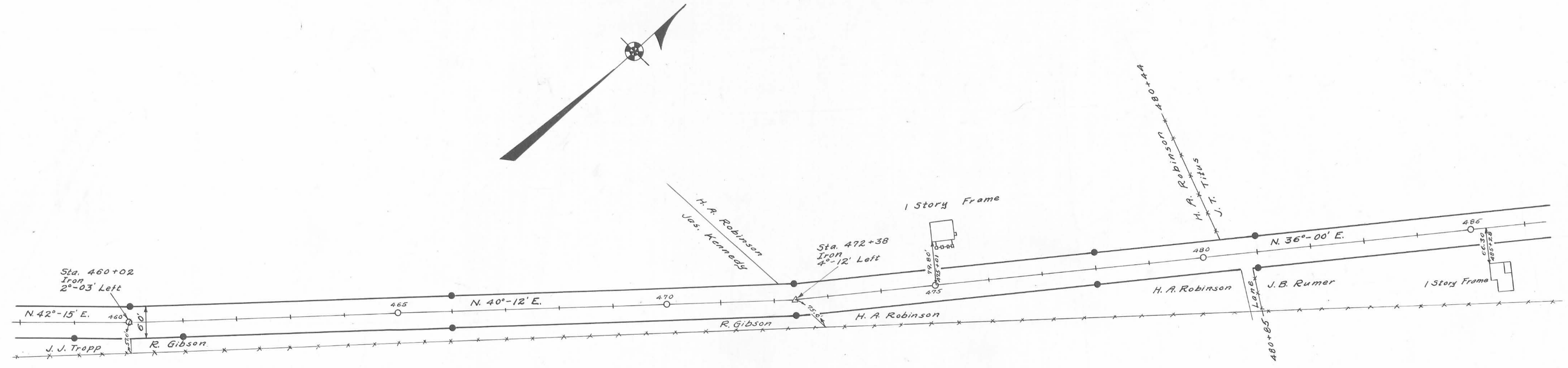
Concrete right-of-way monuments set as shown ●  
Field Notes Book 578 Pages 8 to 53  
Logan County Engineers Office



Surveyed By F. F. Wright  
March 1934  
Drawn By E. K. Carr  
May 1936

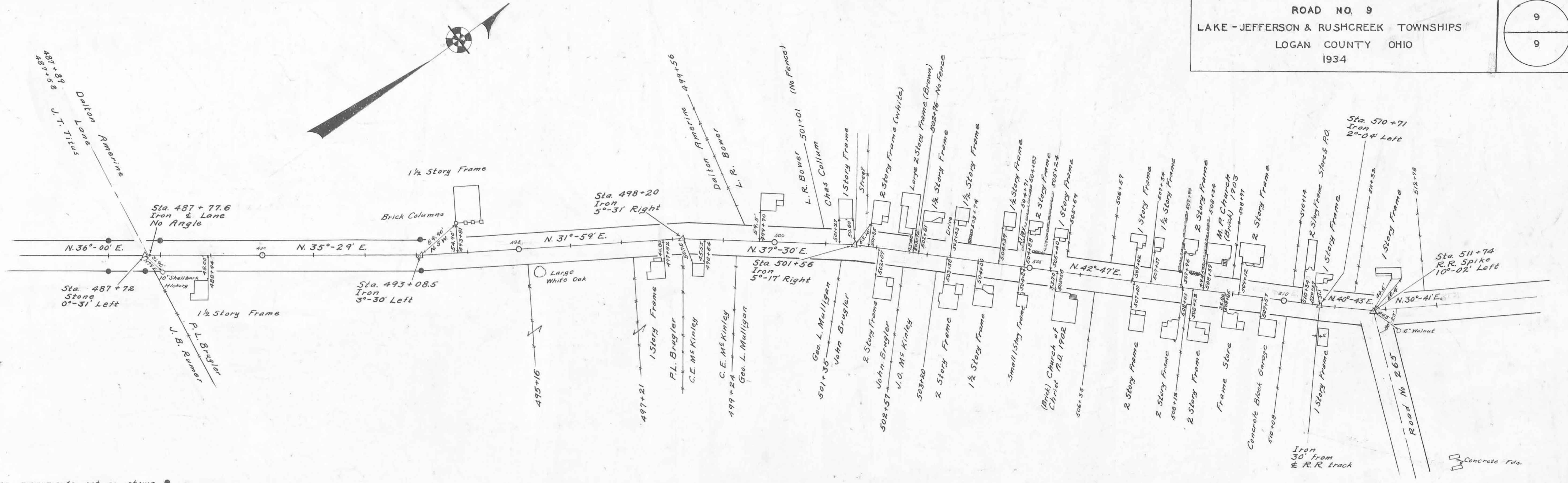


Concrete right-of-way monuments set as shown  
Field Notes Book 578 Pages 8 to 53  
Logan County Engineer's Office



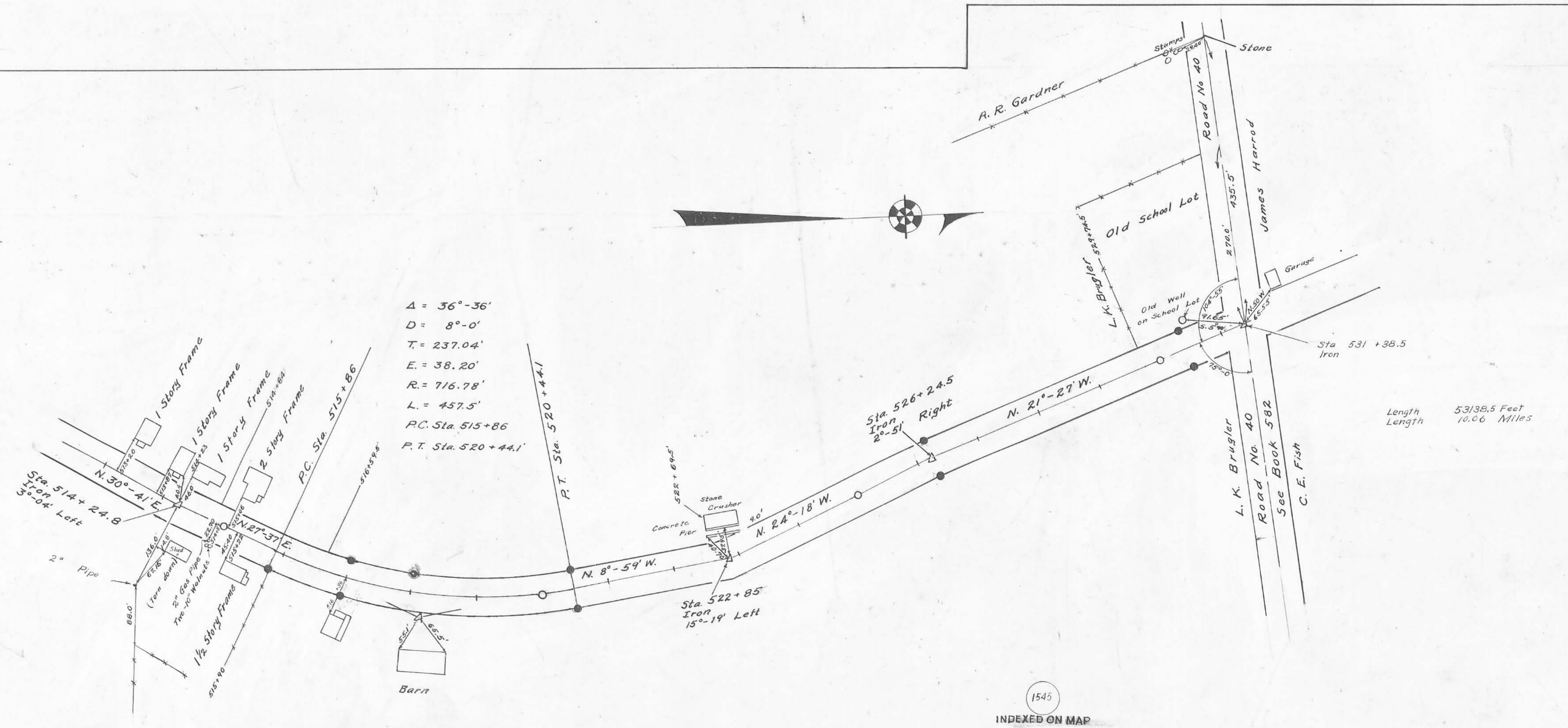
Surveyed By F.F. Wright  
March 1934  
Drawn By E.K. Core  
May 1936





Concrete right-of-way monuments set as shown •  
Field Notes Book 578 Pages 8 to 53  
Logan County Engineers Office

ROAD 9



Surveyed By F.F. Wright  
March 1934  
Drawn By E. H. Cera  
June 1936

1545  
INDEXED ON MAP



Road 9 (Rushsylvania Pike)

Lake - Jefferson & Rushcraft Taps.

60' Free Turnpike Record  
3 Page 238 1893  
Map Book H Page 56  
Profile Vault.

Hand Surv  
Book 493  
Page 72  
M.S. Adams  
C.B. Rogers

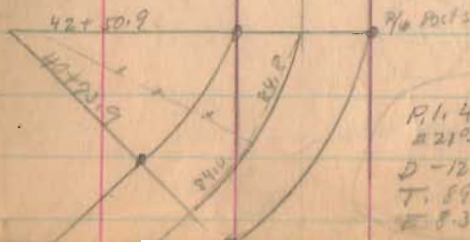
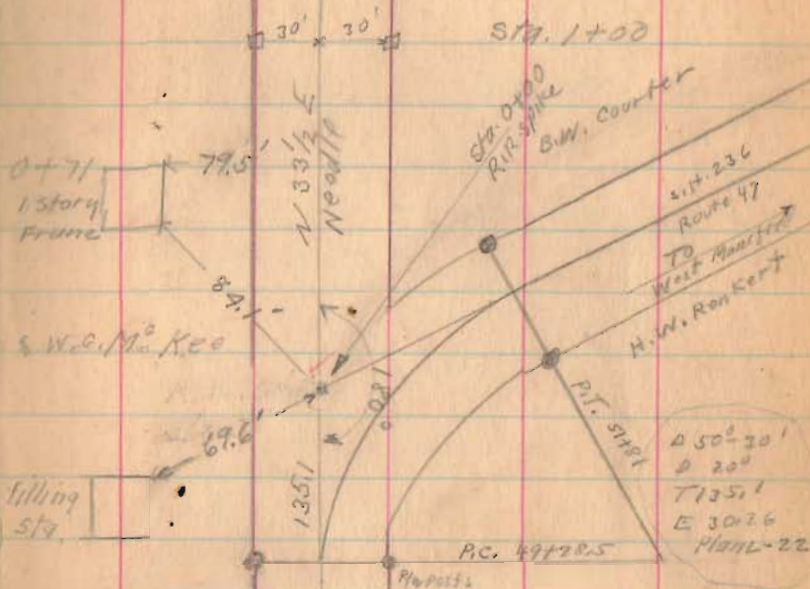
1545

INDEXED ON MAP

Feb - 20 1934  
cold - yes.  
Cranes  
and Cars  
Organ  
Path fields  
Hunt  
Running

N 33° 17' E

Monuments  
placed as shown  
30' from E for 60' Road



R.I. 41+63.4  
221.74' - Plan  
D - 12°  
T. 89.64  
E 8.38  
L-22



Road 9

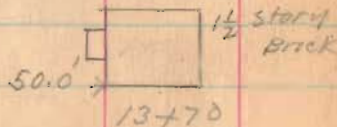
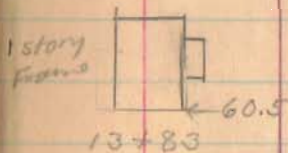
2-28-34

12

N 35 1/2° E  
Neddie

Harrow Tooth  
15+65 Angle  
01° 53' R.

14+50



Wm Chris  
13+13  
x  
Roy Alberts

N 33° - 17' E

10+50

6+80 Lane

Roy Alberts  
x  
6+75

1545

INDEXED ON MAP

Sta 5+00

Road 9

2-28-34 18

31+00

26+00

Roscoe Baldwin  
Lane


X X

25+45 DeLaughter  
25+45

N 35° 10' E

51.0' →  1-story  
house  
21+94

21+50

←  20+42 stone Arch

DeLaughter

X X

20+16  
B.W. Courter

M.O. Entarline

X X

19+79

Wm. Ohns

16+00

N 35 1/2° E  
N 30° E

1545

INDEXED ON MAP



Road 9

2-28-37

N. 35° - 10' E

55+00

47+50

13 13

44+69 Stone Arch

43+78 E Drive

43+00

G. Hustlin  
Mo. Enterline  
37+58  
39+59

G. Hustlin  
R. Baldwin

1545

INDEXED ON MAP

37+00

Road 9

R/W Mon  
Sta. 68+00

1/2" bolt  
hex. nut  
Set  
Sta. 62+68.5

S. 68°-50' E.  
340.0'

88°-00'

1/2" bolt  
hex. nut  
Set

S. 32°-30'

W. W. Windham  
to  
Don E. Edgington

2.20 Acres

2082

INDEXED ON MAP

R/W Mon  
Sta. 61+00

N. 35°-10' E.  
204.67'

S. 53°-40' E.

1/2" bolt  
hex. nut  
Set  
Sta. 58+95.5

S. 88°-53' W.  
472.7'

10" x 6" H. Side of Fence

Surveyed for

D. E. Edgington by  
D. E. Dodson  
V. E. Detrick  
April 4, 1932

1545

INDEXED ON MAP

N 35°-16' E

N 37° E  
Needle

81+00

59195

76+16 & DRIVE

76+02

75+00

Found bent R.R. Spike - Replaced with 1" iron pipe. 6/7/61 D.E.T. D.H.L.

Iron 70+00 Angle 0° 06' Right

68+00

61+00

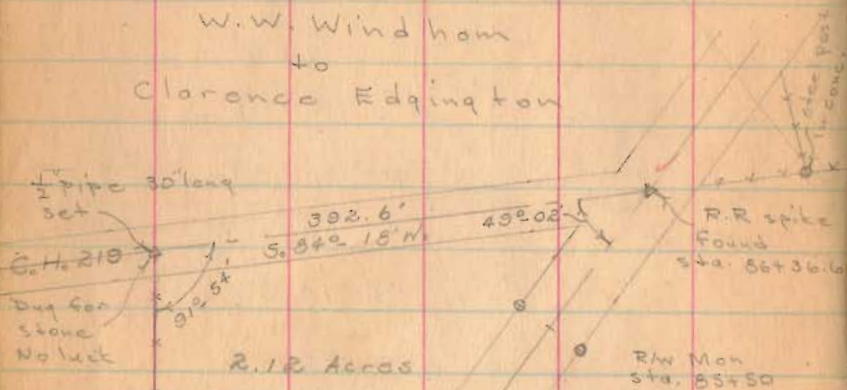
N. 35°-10' E

J. H. Elliott  
G. Austin  
58+95



Road 19

W.W. Windham  
to  
Clarence Edgington



INDEXED ON MAP

2082

Surveyed for  
C. Edgington by  
Dan E. Dodson  
Vinton E. Detrick  
April 4, 1958

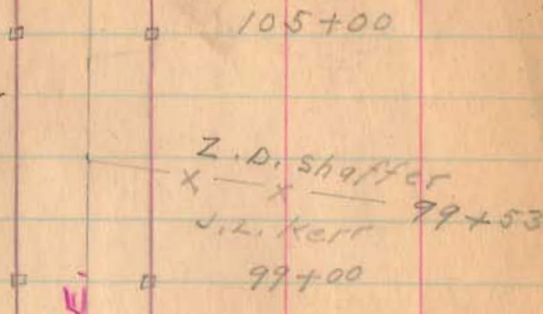
R/W Mon  
Sta. 84+00

1/2" bold-hex. nut  
1 1/4" long set  
Sta. 84+13.8

1545

INDEXED ON MAP

2-28-3



N. 35°-38' E.

Wilson Pitts  
X  
G.C. Meredith  
X  
88+27

G.C. Meredith  
Road 219 86+36.6  
X  
G. Austin  
X  
87+00  
X  
J.L. Kerr  
X  
J.M. Elliott  
X  
86+36.6  
X  
85+50

N 35°-16' E

(R.R. spike  
found 4-4-53  
D.E.D.)

Road 9

Crane  
Ed Carr  
Hatch  
Bugs  
Hunt  
Kenny

March - 1 - 1934

clear - Warner

17

Mon 121+20  
Iron  
1 1/2 story  
Frame  
120+23 ← 58.9 →

J. W. Lawrence  
S. Cordrey  
116+51

J. W. Lawrence  
121+47  
E. C. Balliett  
121+09  
0° 12' Left

N. 35° 38' E.

115+50

108 → 1 1/2 story Frame  
119+13

Sarah Cordrey  
111+93 — x — x  
W. Pitts

111+00

E. C. Balliett  
109+10  
Z. D. Shaffer

105+64  
x — x  
+ Lane +  
105+39

117+23  
458

1545

INDEXED ON MAP



Road 9

42.39  
32.14  
1025

1545

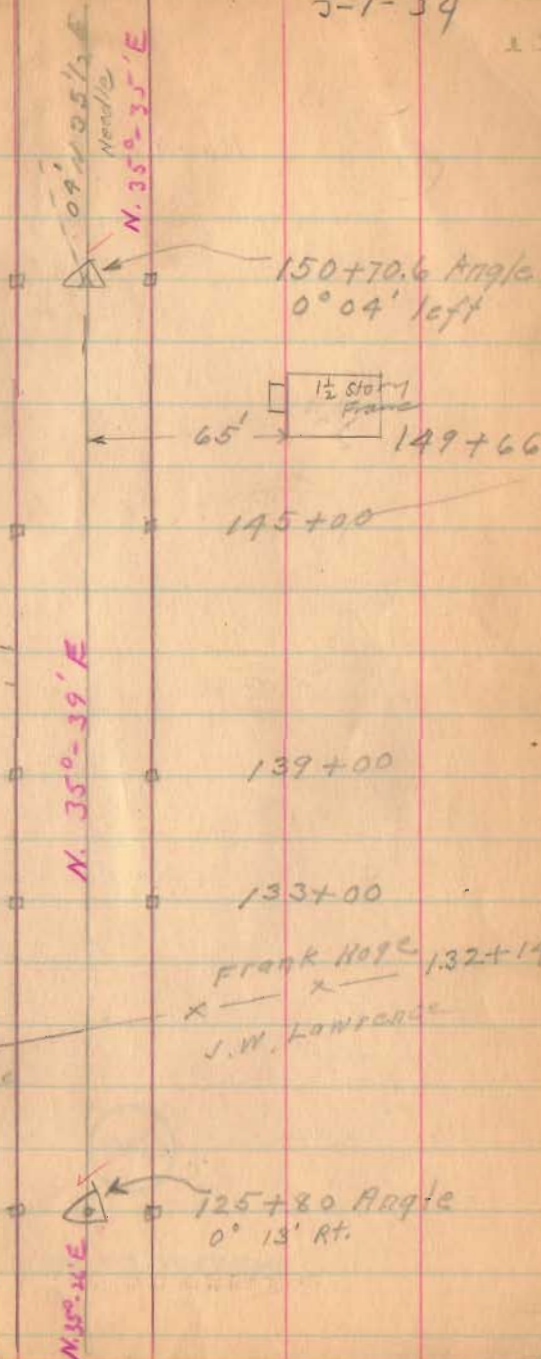
INDEXED ON MAP

5-1-34

23

Frank Hope  
142+64  
J. Austin  
142+39 Drive  
Sarah Cordrey

Sarah Cordrey  
J. W. Lawrence

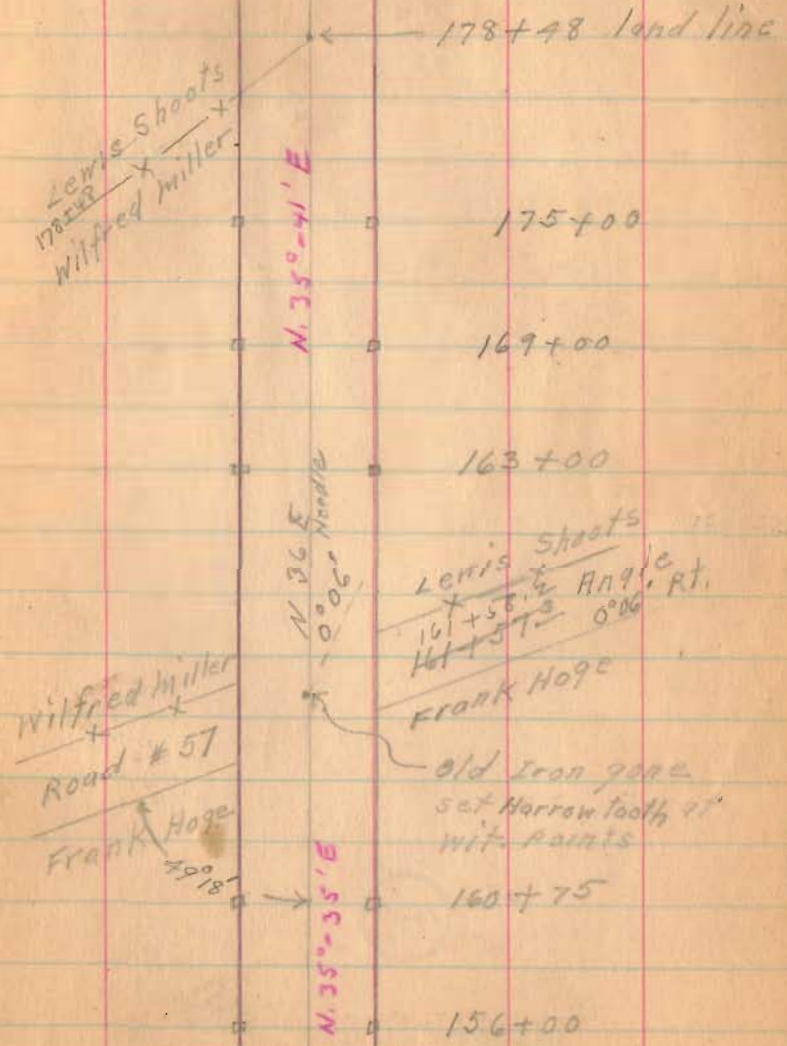


Road: -9

30.10  
18.20  
11.90

1545

INDEXED ON MAP





Road 9

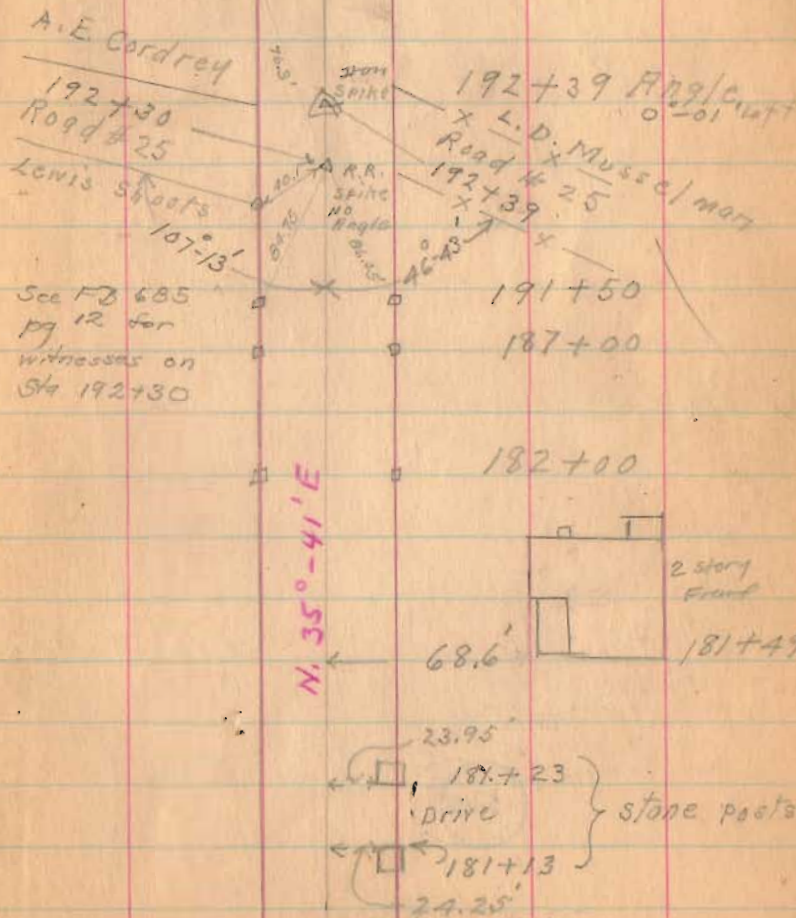
To  
Harper

1545

INDEXED ON MAP

3-1-34

21



Road 9

221+00

215+00

1545

INDEXED ON MAP

3-1-34

21

Jas. Ansley

A.E. Cordray 220+08

Jas. Ansley

218+47

Road No. 222

To Mod City

218+04

Frank Hoge



See pg. 64  
this book

N. 350+40' E

210+00

Frank Hoge 205+10  
+  
L.D. Musselman

204+00

199+66  
+  
199+01  
Lone

198+00

N. 325' E  
Needs



Road 9

229+00

227+00

1545

INDEXED ON MAP

March 7-1934

cloudy - cold

Wright

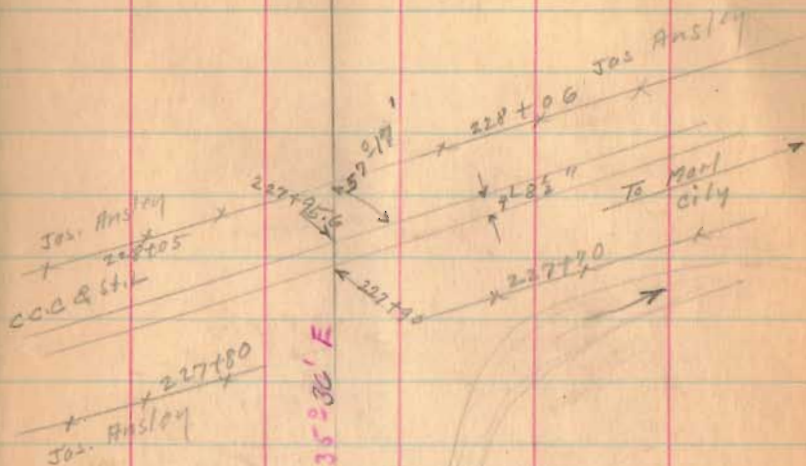
Mills

Richardson

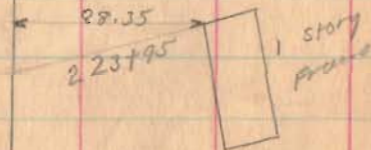
Ratfield

Henry

23



Iron  
222+95  
0.04



Road. 9

247+00

240+77

235+00

1545

INDEXED ON MAP

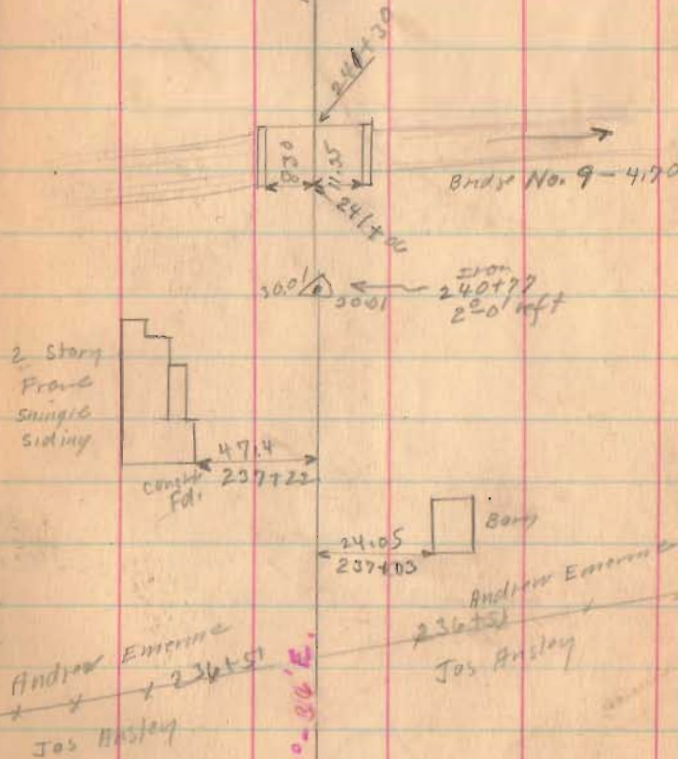
3-7-34

23

14106  
14077  
25

N. 33° - 36' E.

N 32 E.  
Needle



N. 35° - 36' E.

400 100 1000



Road 9

8163  
6961  
1202

281+63.5

90° Bk side

277+00

271+00

269+00

263+83.5

257+52

252+00

1545

INDEXED ON MAP

3-7-34

27

Large  
Mound

31.9  
Notch &  
Spikes  
2' above  
ground.

R.R. Spike  
269+61  
No Angle

Iron  
263+83.5  
3° 30' Left

History  
Front

N. 35°-38' E

N. 35° E

N. 35°-14' E.

N. 38°-44' E

N. 33°-36' E

RR Spike  
0-44' Right  
281+63.5

20°-25'

100.0

45.85  
5.53 E

59.95

50.00

269+46

50.02

20.02

20.02

20.02

20.02

20.02

20.02

20.02

20.02

20.02

20.02

20.02

20.02

20.02

Frank M. Borden

Book 560  
Page 57

118

118

118

118

118

118

118

118

118

118

118

118

118

118

118

118

118

118

118

118

Road 9

304+00

left Only

299+00

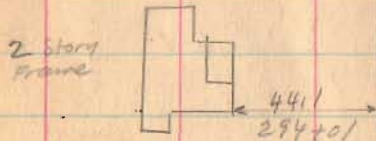
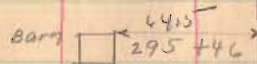
293+00

288+00

1545

INDEXED ON MAP

89-04-20



W. 35°-58' E

H. & M. Hooper  
302+57  
Lane  
2  
Frank M. Borden





Road 9



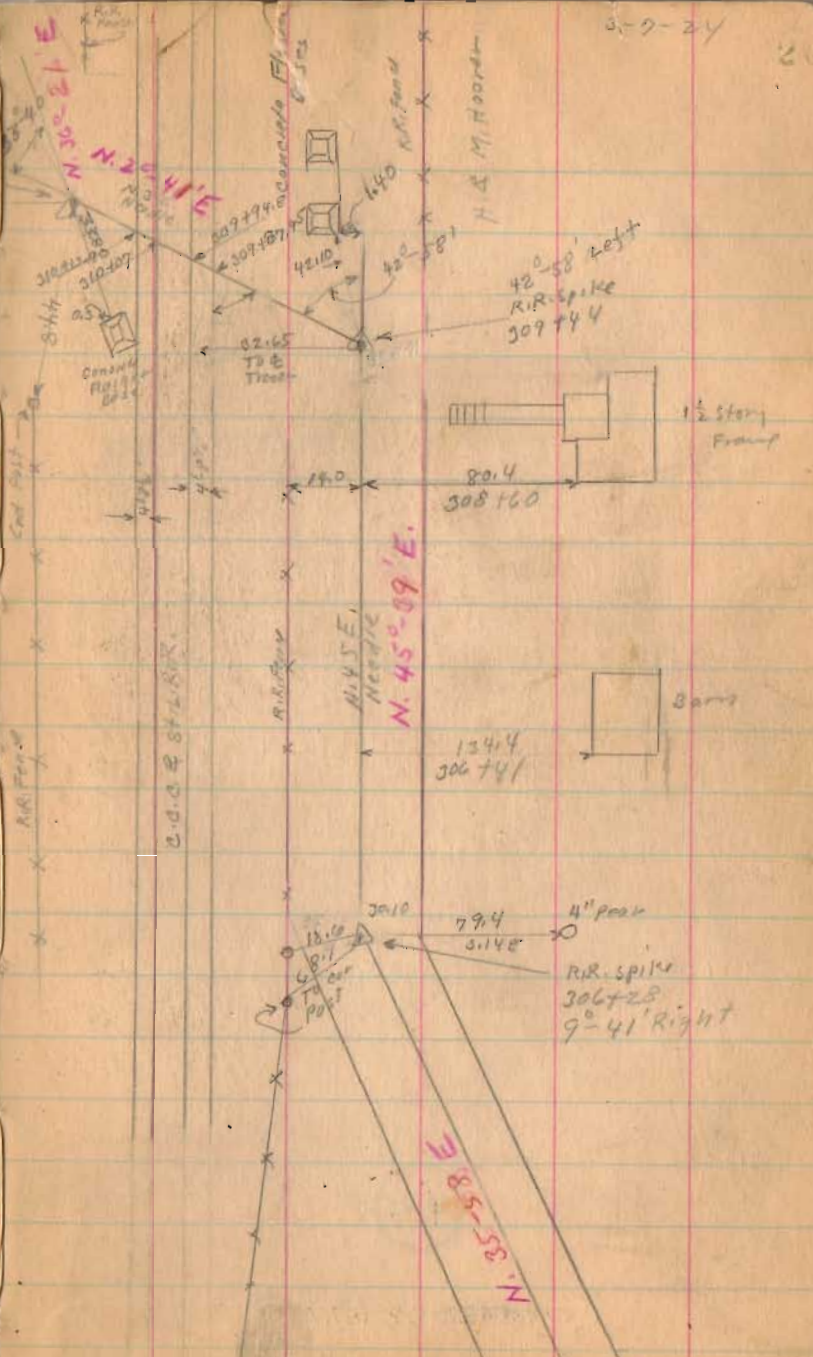
311+00 left only

309+44 90° from Booksite Right Only

306+28 Right Only

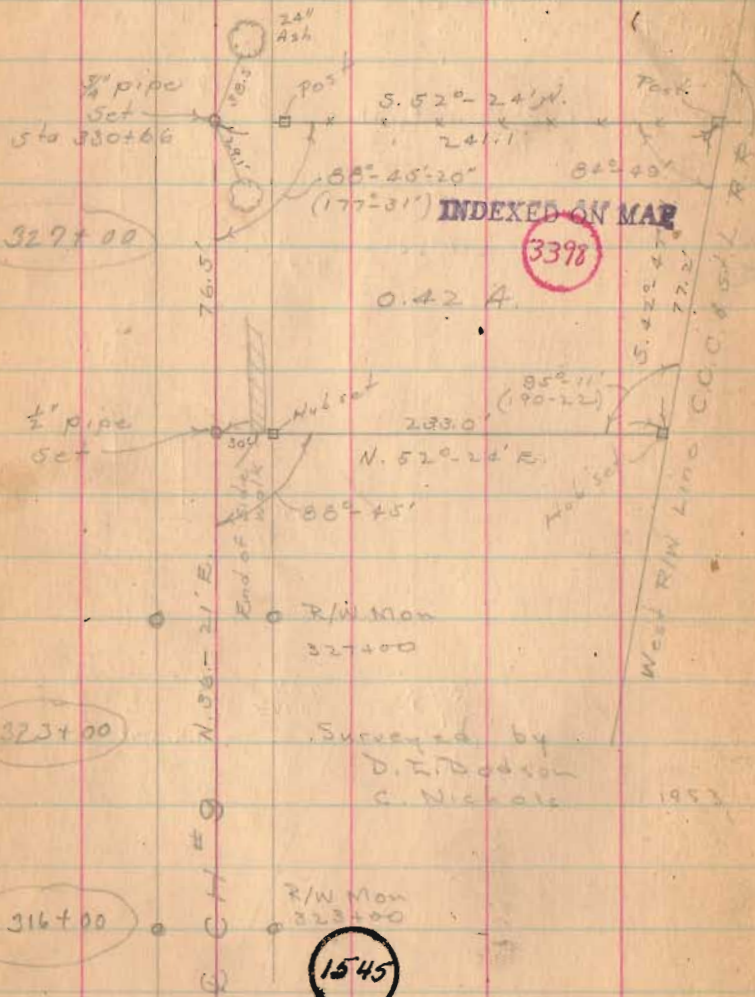
1545

INDEXED ON MAP





Road 9



329+00

3398

323+00

316+00

1545

INDEXED ON MAP

Surveyed by  
D. F. Dodson  
C. Nichols  
1953

3-9-24

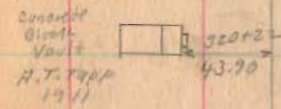
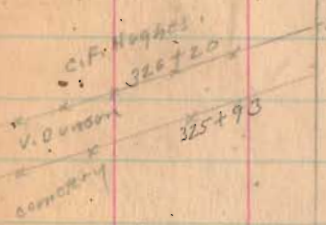
329+35

329+90  
End of water  
329+17  
Continued on Page 49

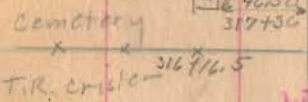


52

Continued page 49



1897  
R.M. Ausley  
March 12  
1897



N. 36° 21' E  
N. 37° E  
N. 36° 21' E



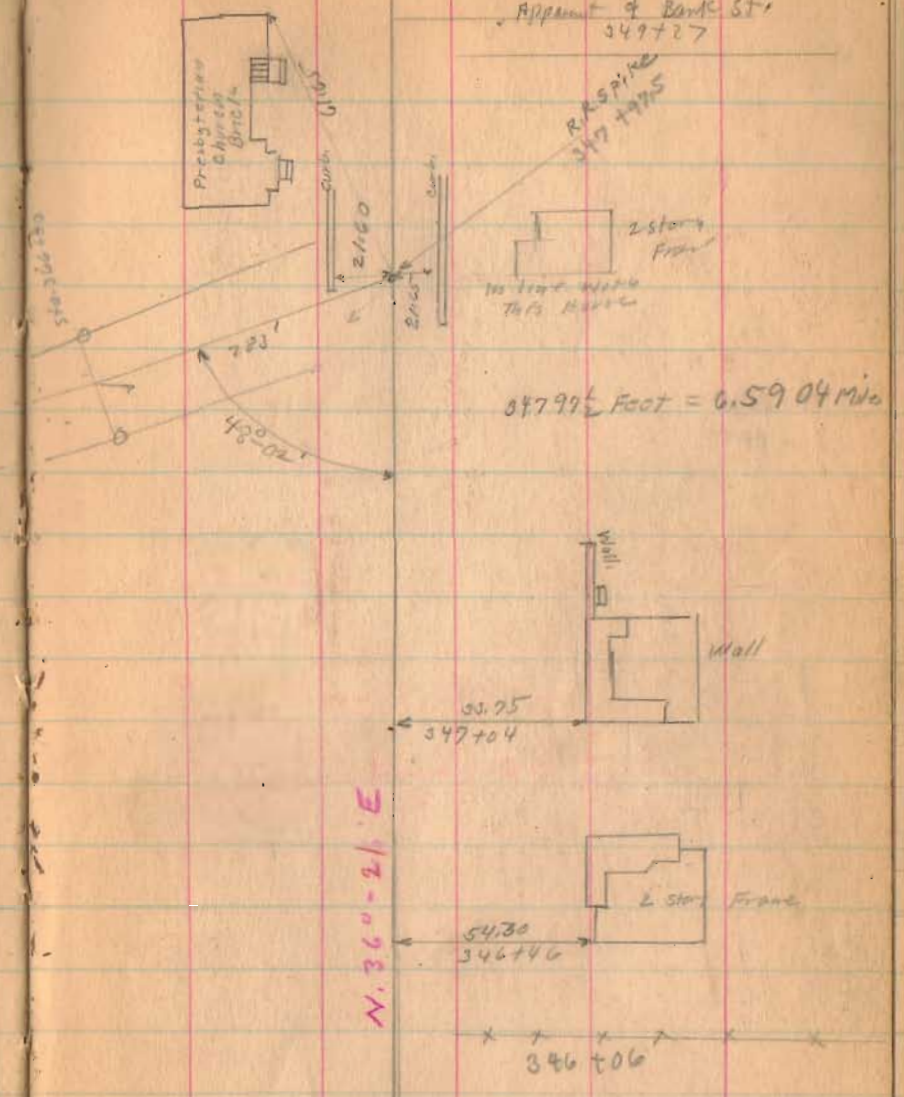
Road. 9



( See Book 501 for Street  
 Survey Rehsylvania )

INDEXED ON MAP

1545



Sta. 330+00 TO 346+06  
 See Pages 49 TO 52

Road 9

March 28-1934  
Year - odd 29  
Very Heavy frost  
Winged  
Mills  
Rathfelder  
Richardson  
Henry

Apparent &  
Rush St.

52+95  
Apparent &  
Euclid St.

N 36° - 21' E

1545

INDEXED ON MAP



Road-9

3-28-34

x 364+41 x

x 362+46  
CCC 294.

N 36°-21' E

x x 364+39 x (31)

x 362+02 x

vic. Padmont.

South Track

358+35 & between  
Two Main Tracks

Apparent & 357+09  
Miami Road.

357+24  
Apparent & Rail Road St.

N 36°-21' E

1545

INDEXED ON MAP





Road 9

379+00

374+70

1545

INDEXED ON MAP

8-28-34

32

2 story  
Frame



109.40  
381+55

F.G. Leidigh

a.w. Snyder

381+30

E.E. Padon  
O.P. Snyder

115.10  
377+53



RESERVATION 376+11 ± WAS

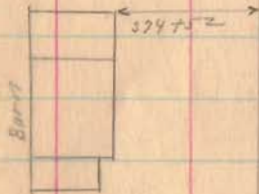
L.O. W. Snyder  
Wm. Rollins

375+66

O.W. Snyder  
C.E. Waples

376+00

Stone 18624  
# 375+61



Wm. Rollins  
372+70



N. 36-21 E.

Road 9

393+38

391+00

384+00

1545

INDEXED ON MAP

3-22-34

33

Iron  
393+38  
2<sup>nd</sup> 21' Right

N 38°-53' E

N 36-21 E

HONZO EMBROID  
394+81  
Clara Musselman

30+02  
35.90  
393+28  
Garage

53.40  
392+44  
1 story  
Frame

Clara Musselman  
388+87

FG. Leidigh

389+69  
389+25

HONZO EMBROID  
FG. Leidigh

111.0  
388+06  
1 1/2 story  
Frame

High Mast  
384+91

386+00

FG. Leidigh  
LIE. PHARM  
382+76

3-22-34



Road 9

415+00

409+00

404+00

399+00

1545

INDEXED ON MAP

8-28-34

37

N. 39-14 E.

50.00

406+60



1 1/2 story  
Frame

one  
stone cap  
gone



Stone Arch

Iron  
401+75  
0°-21' Right

measured to  
wall not cap.

N. 38°-53' E.







Road 9

466+00

461+00

Right Only

460+02

left only 90° from Box 518

459+00

Right Only

455+75

452+20

449+00

443+00

1545

INDEXED ON MAP

March 29 1934

Clear - Nice day

102 about gone

Wright  
Mills  
Ratcliffe  
Richardson  
Henry

NOTE:  
Sta. 460102 - OLD IRON BAR  
FOUND BENT - REPLACED WITH  
5/8" IRON BAR - APRIL 22, 1972  
D.E.G.

460+02  
Iron  
2'-03" left

N. 40-12E

R. Gibson

57.0'

460+02

W. J. Tropp

N. 42-15E

Jos Kennedy

456+06

J. J. Tropp

1 1/2 story  
Frame

38.90

451+24

53.05

90° 10'

Iron Found

89.50

Iron Found

V.M.S. 9955

J. J. Tropp

442+89

W. J. Kennedy

V.M.S. 10041

N. 41-58E



Road 9

481+00

498+00

472+38

1545

INDEXED ON MAP

J.T. Titus

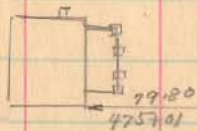
H.A. Robinson

480+44

480+85

lane

1 story  
Frame



N. 36-00-E

DO  
472+38  
42' 4 FT

N. 36-E  
N. 40-E

H. Robinson

R.R. Fegan

750  
LINE

H.A. Robinson

Jos. Kennedy

30.02

30.02

N. 40-12-E

R. Gibson

road. 9

493+08.5

488+00 left only

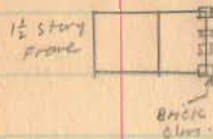
487+72 Right Only 90° Backsite

487+00 left only

1545

INDEXED ON MAP

(Emerging Survey 9-20-05)  
Book 384. Page 73



(NO FENCE)

30.00

Iron Found  
493 to 8.5  
3°-30' left

Stone Found  
487+72  
0°-31' left.

Dalton Amrine

487+29

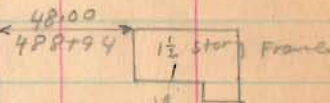
lane

487+58

Titus

N. 35-29 E

N. 36-00' E.

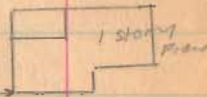


Stone No. Angle  
487+72  
& lane  
12" shell/bark  
Highway

31.90  
N. 79 E P.L. Brugler

J. Runner

46.30  
485+28



3-25-24

39

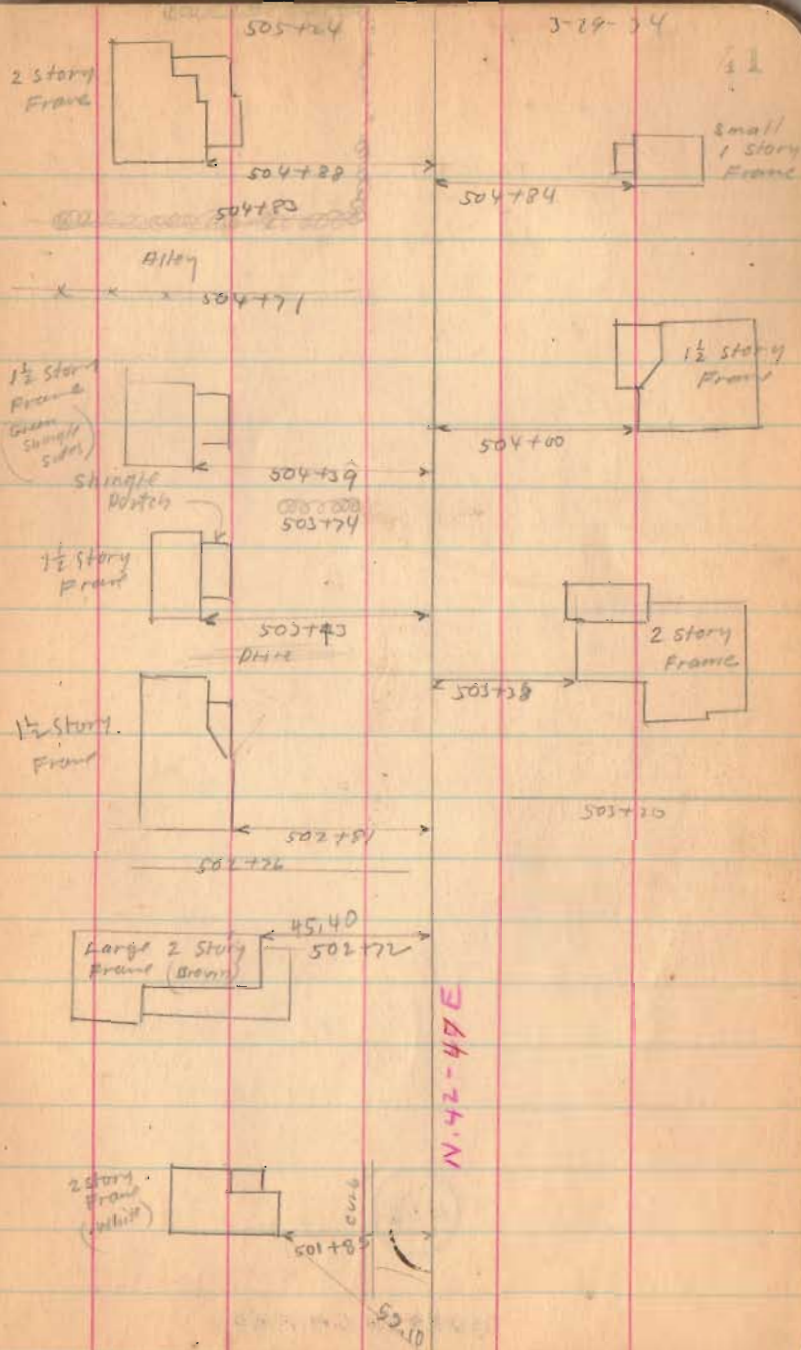




Road 9

1545

INDEXED ON MAP





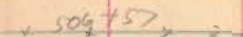
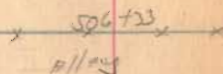
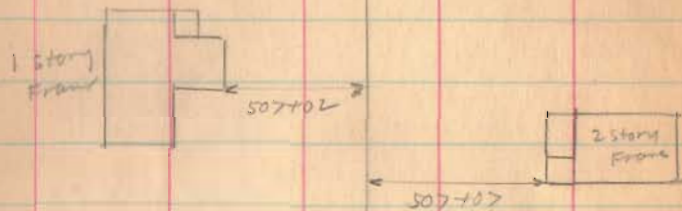
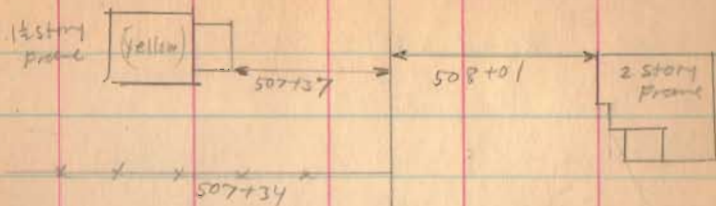
Road 9

1545

INDEXED ON MAP

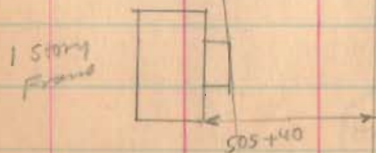
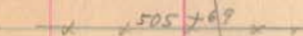
3-29-34

23



N. 42-47 E.

33.90  
505+56



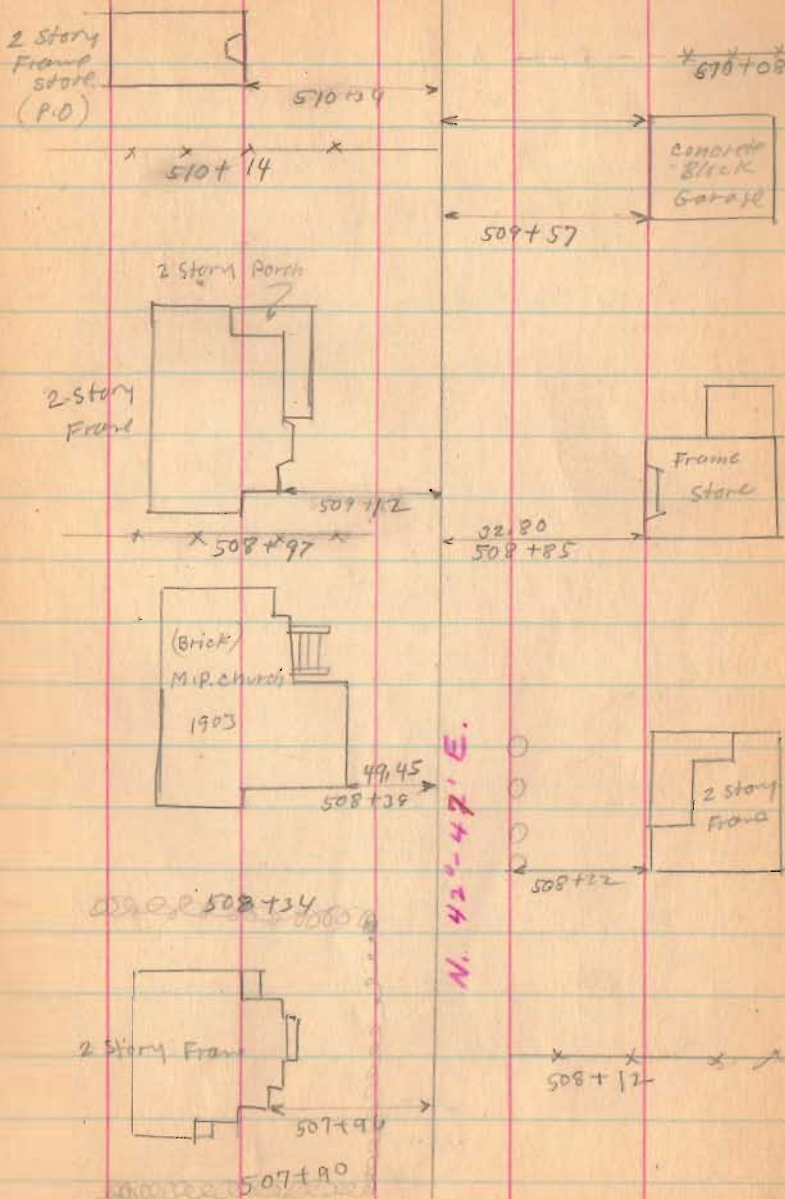
Road. 9

1545

INDEXED ON MAP

3-29-74

33





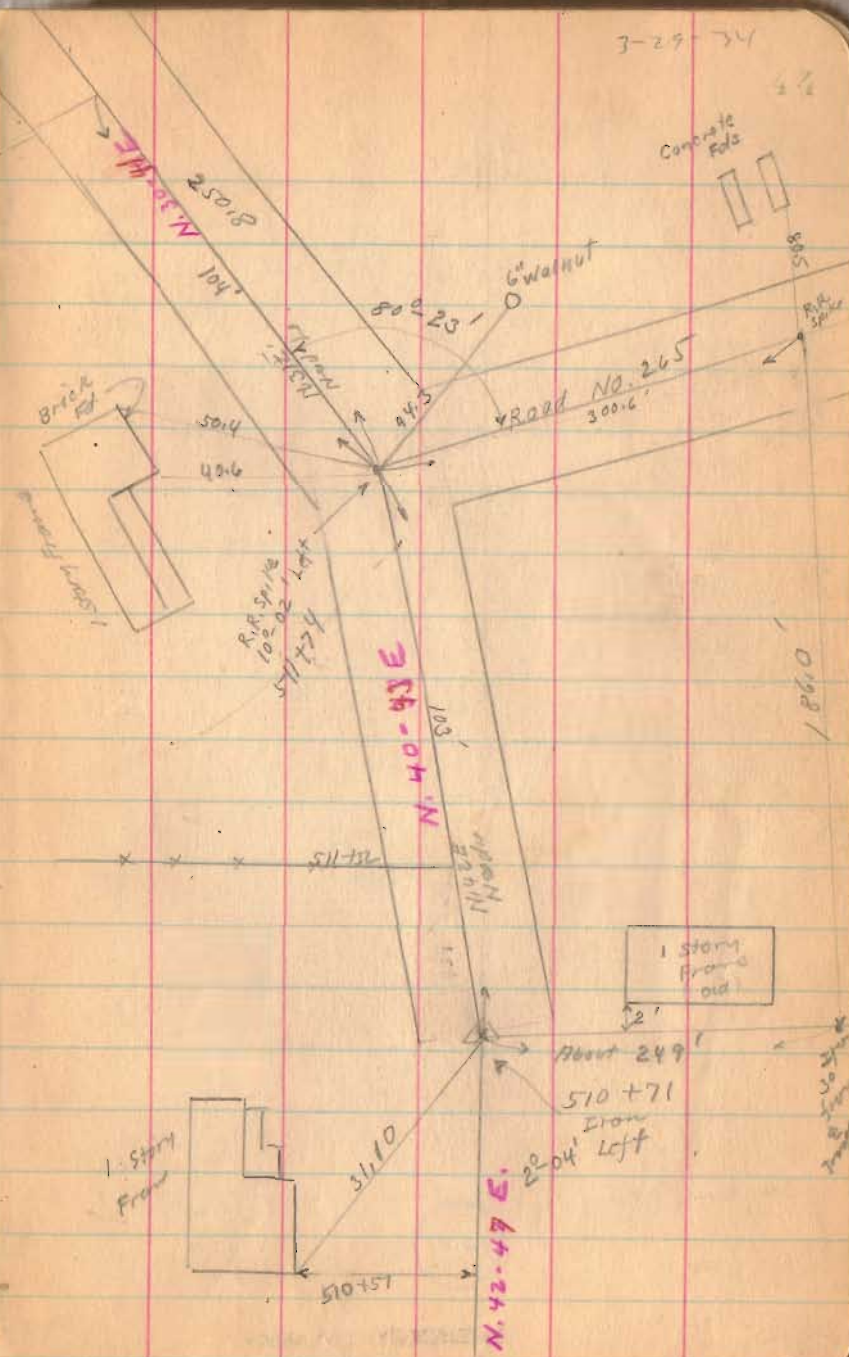
Road No. 9



1545

INDEXED ON MAP

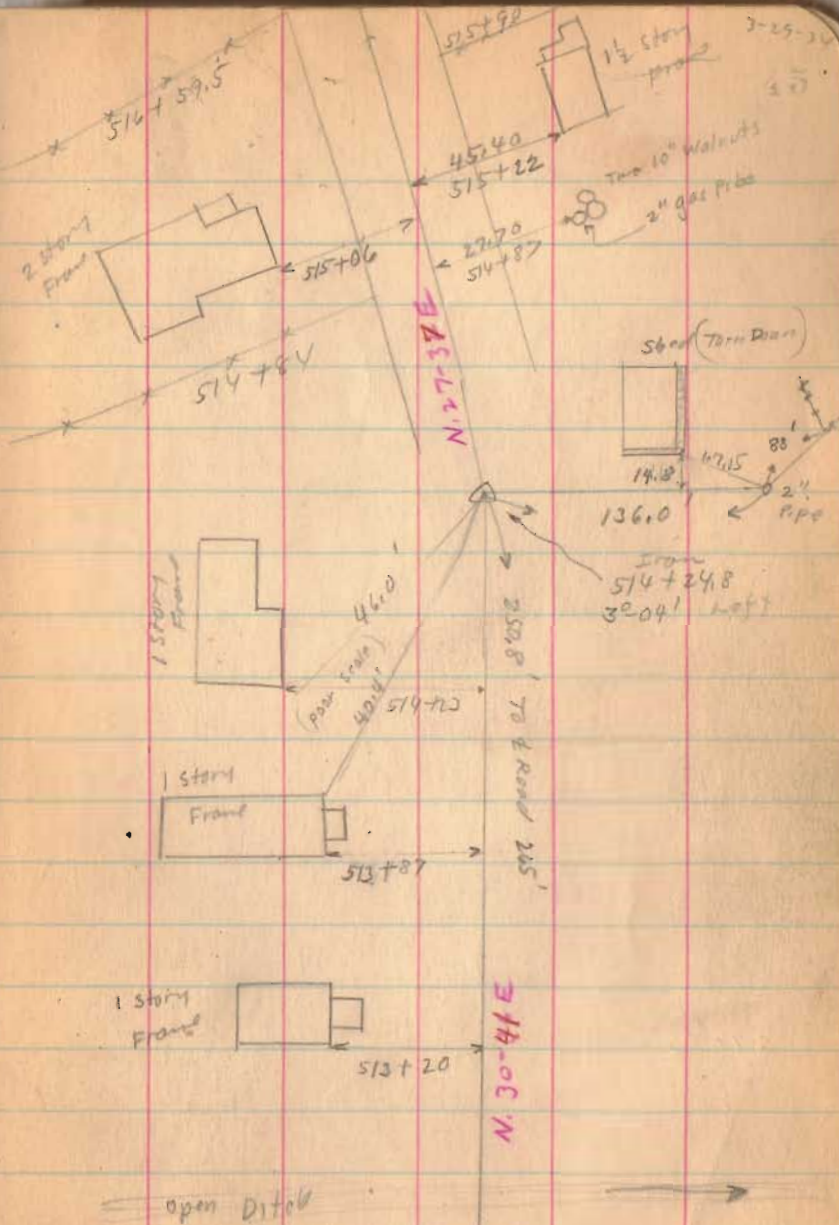
3-29-34



Road - 9

1545

INDEXED ON MAP







Road 9

526+24.5

526+33

522+85

522+93.5

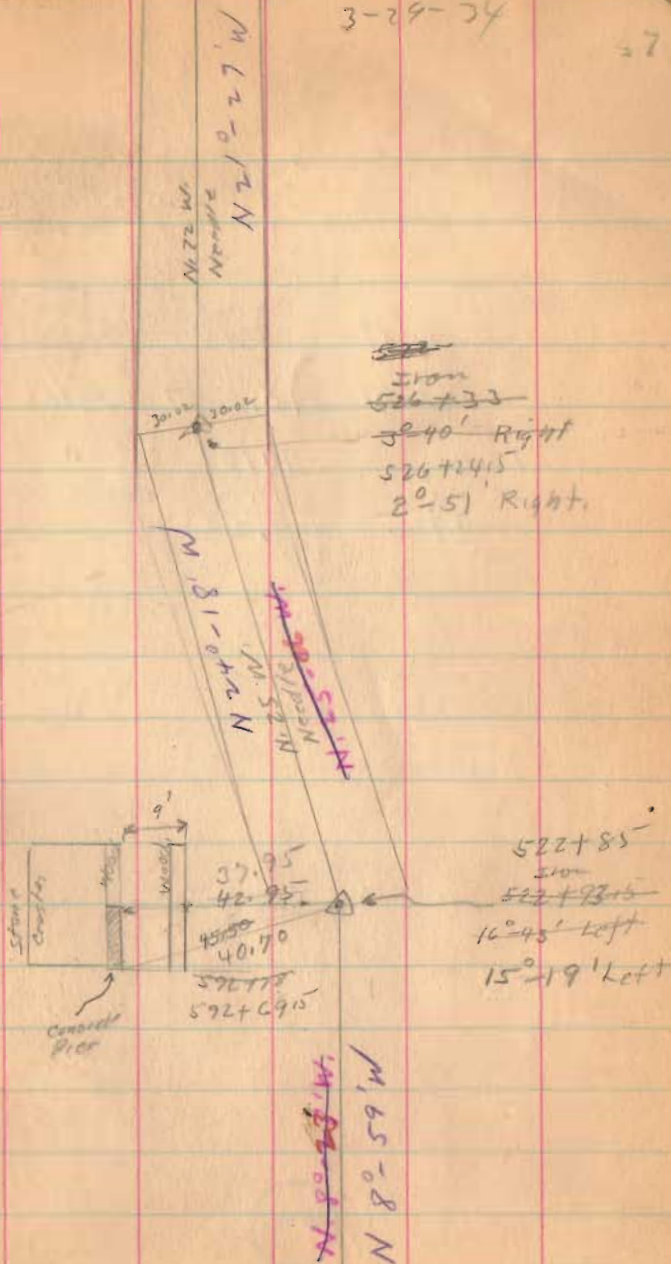
No Manurets  
No Stakes  
Too Much stone

1545

INDEXED ON MAP

3-29-34

27





Road. 9

Length  $53138\frac{1}{2}$  Feet  
~~53147~~ Feet

Length  $10.0657$  Miles

$\frac{10.06}{85}$   
9.21

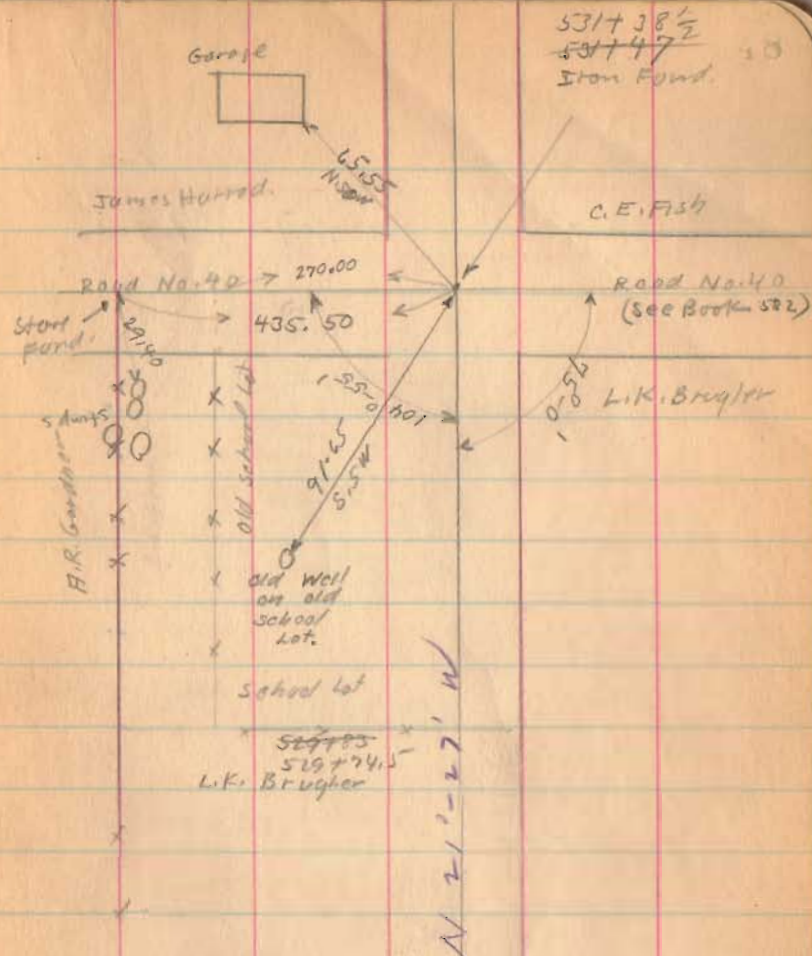
$\frac{10.07}{.85}$  " Deduct for Rushsylvania  
9.22

~~530750~~

530741.5

1545

INDEXED ON MAP







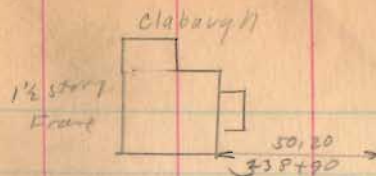
Road 9

15-45

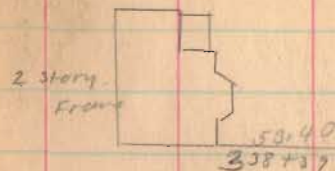
INDEXED ON MAP

3-7-34

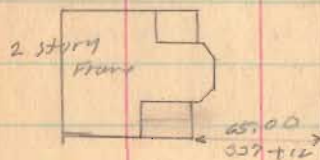
50



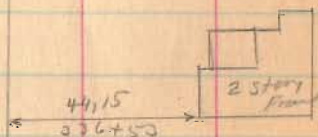
90° angle  
x  
225+91



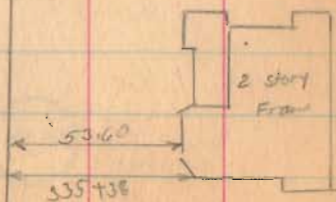
N. 36° - 26' E.



339+10



336+50

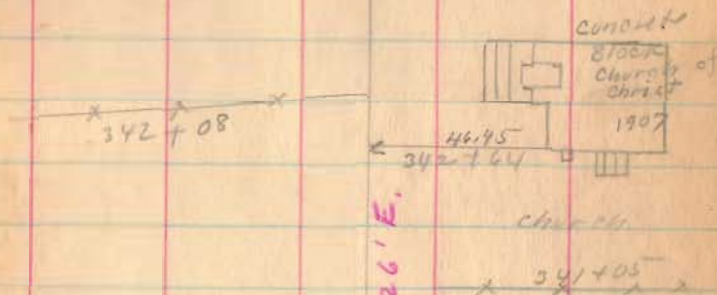
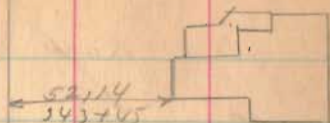
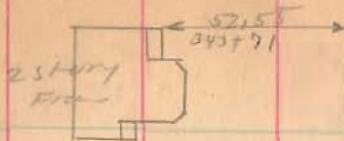


Road 9

1545

INDEXED ON MAP

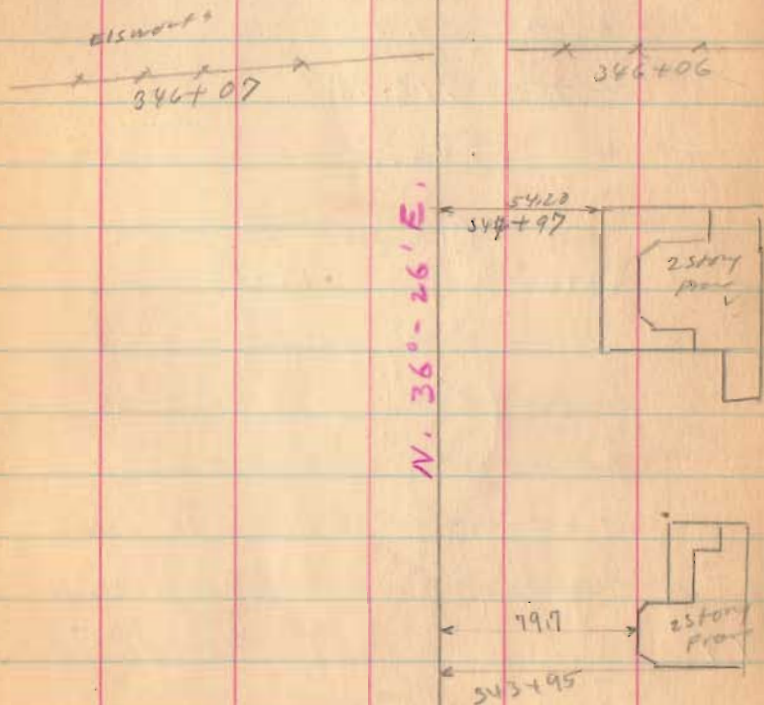
51





Road 9

Continued on Page 28.



1545

