

REC'D 4-7-08 SMJ/AL

Lee Surveying and Mapping Co., Inc.

Land Surveys • Topography • Subdivisions • Construction Layout

117 N. Madriver St.
Bellefontaine OH 43311



Phone: (937) 593-7335
Fax: (937) 593-7444

BARROWS 14.252 ACRES

Lying in Virginia Military Survey 12563 & 13067, Jefferson Township, Logan County, Ohio.

Being out of the Kathleen K. Barrows 111.7 acre tract as deeded and described in Official Record 144, Page 423 of the Logan County Records of Deeds and being more particularly described as follows:

Commencing on a 1/2 inch iron rod found in a monument box on the center-line of County Highway 10 at center-line Station 172+14 (Logan County Engineer's Field Book 615, Page 17).

THENCE, with the center-line of County Highway 10 (50 feet wide), N 85°-27'-43"E, a distance of 716.75 feet to a railroad spike found at the TRUE POINT OF BEGINNING.

THENCE, with the center-line of County Highway 10, the following two courses:

N 85°-27'-43"E, a distance of 177.70 feet to a 1/2 inch iron rod found in a monument box at center-line Station 149+55.6 (Logan County Engineer's Field Book 615, Page 16).

N 84°-22'-55"E, a distance of 122.35 feet to a MAG nail set.

THENCE, S 5°-53'-02"E, a distance of 626.74 feet to a 5/8 inch iron rod set, passing a 5/8 inch iron rod set at 30.00 feet.

THENCE, N 79°-36'-08"E, a distance of 545.00 feet to a 5/8 inch iron rod set.

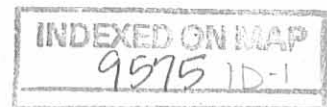
THENCE, S 5°-22'-51"E, a distance of 701.93 feet to a 5/8 inch iron rod set.

THENCE, S 76°-35'-36"W, a distance of 349.52 feet to a 5/8 inch iron rod set.

THENCE, with the easterly lines of The Miami Presbytery original 68 3/4 acre tract (Vol. 389, Pg. 853), the following two courses:

N 43°-04'-02"W, a distance of 755.10 feet to a 5/8 inch iron rod set.

N 12°-02'-02"W, a distance of 320.00 feet to a 5/8 inch iron rod found.



Lee Surveying and Mapping Co., Inc.

Land Surveys • Topography • Subdivisions • Construction Layout

117 N. Madriver St.
Bellefontaine OH 43311



Phone: (937) 593-7335
Fax: (937) 593-7444

THENCE, with the easterly lines of the said original 68 3/4 acre tract and the Ed DeLair 1.205 acre tract (O.R. 486, Pg. 354), N 5°-53'-01"W, a distance of 416.50 feet to the point of beginning, passing a 5/8 inch iron rod found at 391.49 feet.

Containing 14.252 acres, of which 0.172 acre is within the highway right-of-way.

The basis for bearings is the center-line of County Highway 10 between center-line Station 172+14 and center-line Station 149+55.6, being N 85°-27'-43"E, and all other bearings are from angles and distances measured in a field survey by Lee Surveying and Mapping Co., Inc. on March 10, 2008 and April 4, 2008.

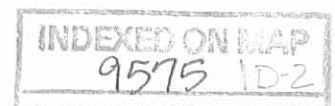


ORIGINAL STAMP IN GREEN

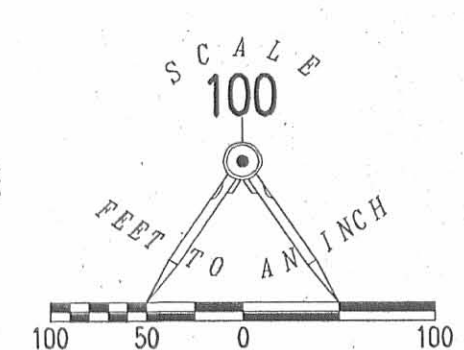
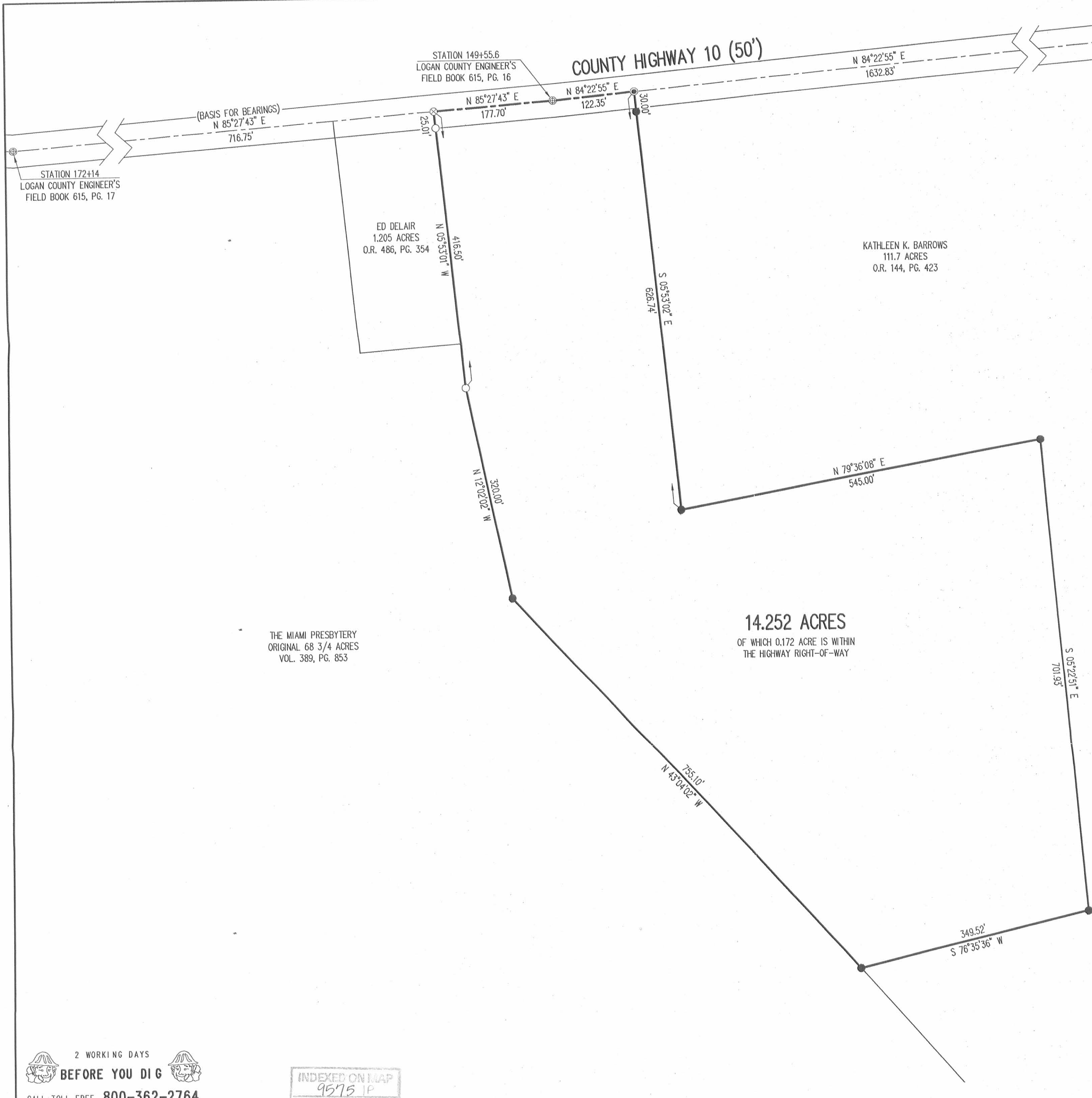
Description prepared by:

William K. Bruce
Professional Surveyor 7437
April 4, 2008

4600038A



READ 4-7-08 SURV OK



- LEGEND:
- ⊕ 1/2 INCH IRON ROD FOUND IN MONUMENT BOX
 - ⊗ RAILROAD SPIKE FOUND
 - MAG NAIL SET
 - 5/8 INCH IRON ROD FOUND
 - 5/8 INCH IRON ROD SET

SURVEY OF 14.252 ACRES OUT OF THE
KATHLEEN K. BARROWS
111.7 ACRE TRACT
OFFICIAL RECORD 144, PAGE 423
VIRGINIA MILITARY SURVEY 12563 & 13067
JEFFERSON TOWNSHIP
LOGAN COUNTY, OHIO

SURVEYED BY:
William K. Bruce

WILLIAM K. BRUCE
PROFESSIONAL SURVEYOR 7437
MARCH 10, 2008
REVISED APRIL 4, 2008



COPYRIGHT 2008 BY:
LEE SURVEYING & MAPPING CO., INC.

117 North Madriver Street
BELLEFONTAINE, OHIO 43311
(937) 593-7335
surveys@lsmcinc.us

ORIGINAL STAMP IN GREEN

KSS D0308 4600038A L-4600-2

2 WORKING DAYS
BEFORE YOU DIG
CALL TOLL FREE 800-362-2764
OHIO UTILITIES PROTECTION SERVICE

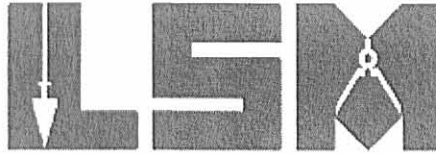
INDEXED ON MAP
9575 1P

RECID 1-12-09 SWJ/ok

Lee Surveying and Mapping Co., Inc.

Land Surveys • Topography • Subdivisions • Construction Layout

117 N. Madriver St.
Bellefontaine OH 43311



Phone: (937) 593-7335
Fax: (937) 593-7444

BARROWS 5.982 ACRES

Lying in Virginia Military Survey 12563 & 13067, Jefferson Township, Logan County, Ohio.

Being out of the Kathleen K. Barrows 111.7 acre tract as deeded and described in Official Record 144, Page 423 of the Logan County Records of Deeds and being more particularly described as follows:

Commencing on a 1/2 inch iron rod found in a monument box on the center-line of County Highway 10 at center-line Station 172+14 (Logan County Engineer's Field Book 615, Page 17).

THENCE, with the center-line of County Highway 10 (50 feet wide), N 85°-27'-43"E, a distance of 716.75 feet to a railroad spike found at the TRUE POINT OF BEGINNING.

THENCE, with the center-line of County Highway 10, the following two courses:

N 85°-27'-43"E, a distance of 177.70 feet to a 1/2 inch iron rod found in a monument box at center-line Station 149+55.6 (Logan County Engineer's Field Book 615, Page 16).

N 84°-22'-55"E, a distance of 122.35 feet to a MAG nail set.

THENCE, S 5°-53'-02"E, a distance of 1080.20 feet to a point referenced by a 5/8 inch iron rod set, S 43°-04'-02"E a distance of 5.00 feet, passing a 5/8 inch iron rod set at 30.00 feet.

THENCE, with the easterly lines of The Miami Presbytery original 68 3/4 acre tract (Vol. 389, Pg. 853), the following two courses:

N 43°-04'-02"W, a distance of 439.66 feet to a 5/8 inch iron rod set.

N 12°-02'-02"W, a distance of 320.00 feet to a 5/8 inch iron rod found.

THENCE, with the easterly lines of the said original 68 3/4 acre tract and the Ed DeLair 1.205 acre tract (O.R. 486, Pg. 354), N 5°-53'-01"W, a distance of 416.50 feet to the point of beginning, passing a 5/8 inch iron rod found at 391.49 feet.

Containing 5.982 acres, of which 0.172 acre is within the highway right-of-way.

The basis for bearings is the center-line of County Highway 10 between center-line Station 172+14 and center-line Station 149+55.6, being N 85°-27'-43"E, and all other bearings are from angles and distances measured in a field survey by Lee Surveying and Mapping Co., Inc. on March 10, 2008 and May 5, 2008.

Description prepared by:

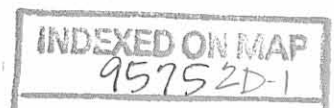


ORIGINAL STAMP IN GREEN

William K. Bruce

William K. Bruce
Professional Surveyor 7437
May 6, 2008

4600048



REC'D 1-12-09 SMY OK

Lee Surveying and Mapping Co., Inc.

Land Surveys • Topography • Subdivisions • Construction Layout

117 N. Madriver St.
Bellefontaine OH 43311



Phone: (937) 593-7335
Fax: (937) 593-7444

BARROWS 10.406 ACRES

Lying in Virginia Military Survey 12563 & 13067, Jefferson Township, Logan County, Ohio.

Being out of the Kathleen K. Barrows 111.7 acre tract as deeded and described in Official Record 144, Page 423 of the Logan County Records of Deeds and being more particularly described as follows:

Commencing on a 1/2 inch iron rod found in a monument box on the center-line of County Highway 10 at center-line Station 172+14 (Logan County Engineer's Field Book 615, Page 17).

THENCE, with the center-line of County Highway 10 (50 feet wide), N 85°-27'-43"E, a distance of 716.75 feet to a railroad spike found.

THENCE, with the center-line of County Highway 10, the following two courses:

N 85°-27'-43"E, a distance of 177.70 feet to a 1/2 inch iron rod found in a monument box at center-line Station 149+55.6 (Logan County Engineer's Field Book 615, Page 16).

N 84°-22'-55"E, a distance of 122.35 feet to a MAG nail set at THE TRUE POINT OF BEGINNING.

THENCE, with the center-line of County Highway 10, N 84°-22'-55"E, a distance of 150.00 feet to a MAG nail set.

THENCE, S 5°-53'-02"E, a distance of 614.21 feet to a 5/8 inch iron rod set, passing a 5/8 inch iron rod set at 30.00 feet.

THENCE, N 79°-36'-08"E, a distance of 394.53 feet to a 5/8 inch iron rod set.

THENCE, S 5°-22'-51"E, a distance of 701.93 feet to a 5/8 inch iron rod set.

THENCE, S 76°-35'-36"W, a distance of 349.52 feet to a 5/8 inch iron rod set.

THENCE, with the easterly line of The Miami Presbytery original 68 3/4 acre tract (Vol. 389, Pg. 853), N 43°-04'-02"W, a distance of 315.43 feet to a point, passing a 5/8 inch iron rod set at 310.43 feet.

THENCE, N 5°-53'-02"W, a distance of 1080.20 feet to the point of beginning, passing a 5/8 inch iron rod at 1050.20 feet.

Containing 10.406 acres, of which 0.086 acre is within the highway right-of-way.

The basis for bearings is the center-line of County Highway 10 between center-line Station 172+14 and center-line Station 149+55.6, being N 85°-27'-43"E, and all other bearings are from angles and distances measured in a field survey by Lee Surveying and Mapping Co., Inc. on March 10, 2008 and May 5, 2008.

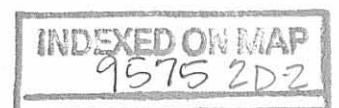


ORIGINAL STAMP IN GREEN

Description prepared by:

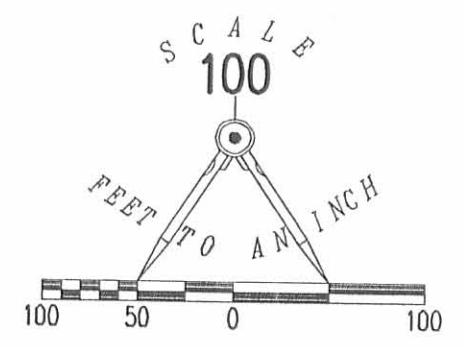
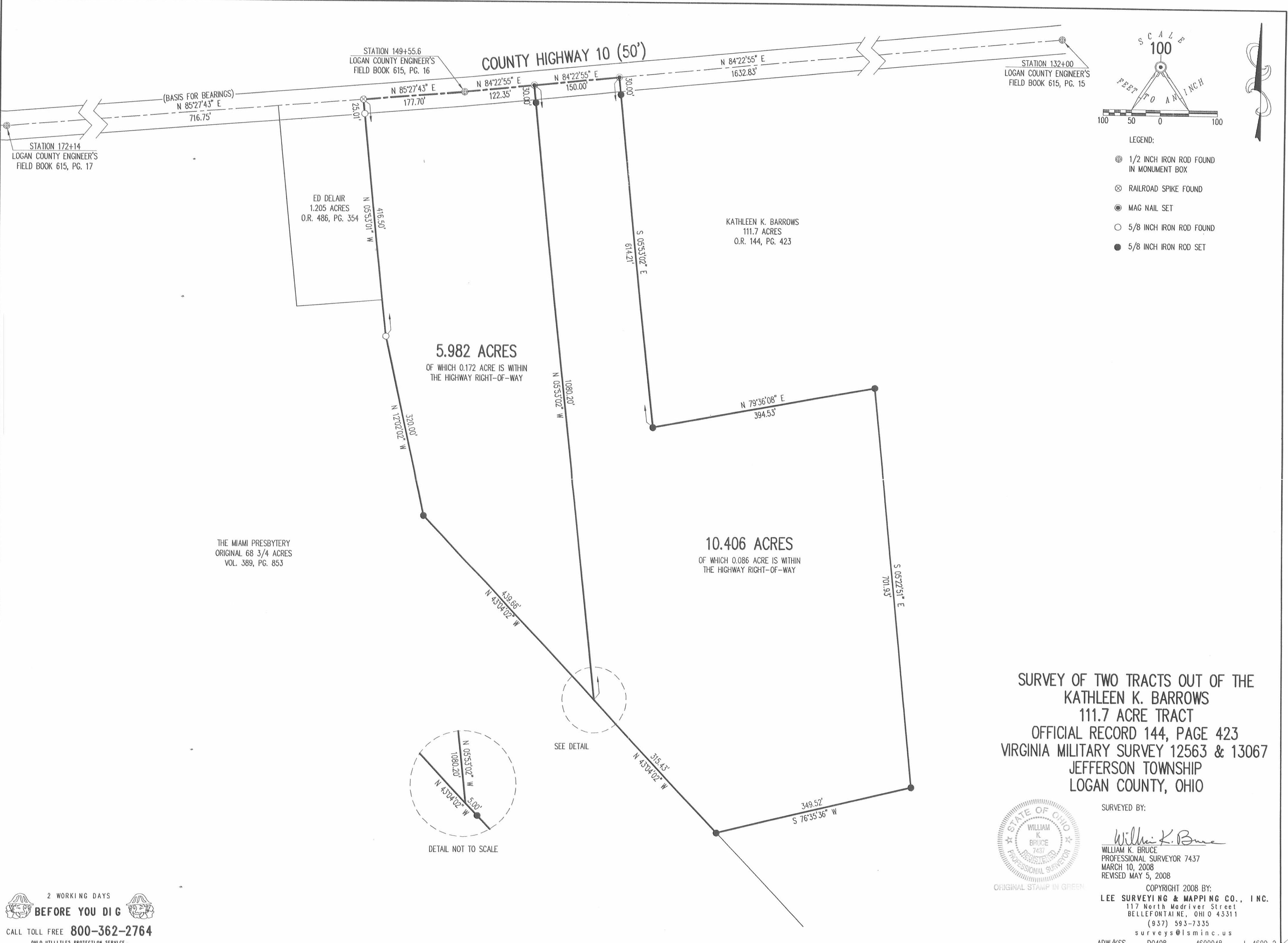
A handwritten signature in cursive script that reads 'William K. Bruce'.

William K. Bruce
Professional Surveyor 7437
May 6, 2008



4600048

REC'D 1-12-09 smy/dk



- LEGEND:
- ⊕ 1/2 INCH IRON ROD FOUND IN MONUMENT BOX
 - ⊗ RAILROAD SPIKE FOUND
 - MAG NAIL SET
 - 5/8 INCH IRON ROD FOUND
 - 5/8 INCH IRON ROD SET

SURVEY OF TWO TRACTS OUT OF THE
KATHLEEN K. BARROWS
111.7 ACRE TRACT
OFFICIAL RECORD 144, PAGE 423
VIRGINIA MILITARY SURVEY 12563 & 13067
JEFFERSON TOWNSHIP
LOGAN COUNTY, OHIO



SURVEYED BY:
William K. Bruce
WILLIAM K. BRUCE
PROFESSIONAL SURVEYOR 7437
MARCH 10, 2008
REVISED MAY 5, 2008

COPYRIGHT 2008 BY:
LEE SURVEYING & MAPPING CO., INC.
117 North Madriver Street
BELLEFONTAINE, OHIO 43311
(937) 593-7335
surveys@lsmc.us

2 WORKING DAYS
BEFORE YOU DIG
CALL TOLL FREE 800-362-2764
OHIO UTILITIES PROTECTION SERVICE

INDEXED ON MAP
9575 ZP

ADW/KSS D0408 4600048 L-4600-2

DEED 8-3-09 smy ok

Lee Surveying and Mapping Co., Inc.

Land Surveys • Topography • Subdivisions • Construction Layout

117 N. Madriver St.
Bellefontaine OH 43311



Phone: (937) 593-7335
Fax: (937) 593-7444

BARROWS 10.00 FEET WIDE SANITARY EASEMENT

Lying in Virginia Military Survey 12563 & 13067, Jefferson Township, Logan County, Ohio.

Being a 10.00 feet wide sanitary easement over a portion of the Kathleen K. Barrows 111.7 acre tract as deeded and described in Official Record 144, Page 423 of the Logan County Records of Deeds and being more particularly described as follows:

Commencing on a 1/2 inch iron rod found in a monument box on the center-line of County Highway 10 at center-line Station 149+55.6 (Logan County Engineer's Field Book 615, Page 16).

THENCE, with the center-line of County Highway 10 (50 feet wide), N 84°-22'-55"E, a distance of 787.35 feet to a MAG nail set.

THENCE, S 06°-52'-26"E, a distance of 559.48 feet to a 5/8 inch iron rod set, passing a 5/8 inch iron rod set at 27.84 feet.

THENCE, S 83°-07'-35"W, a distance of 50.00 feet to a 5/8 inch iron rod set.

THENCE, S 06°-52'-25"E, a distance of 45.00 feet to a point at the TRUE POINT OF BEGINNING.

THENCE, with the center-line of the 10.00 feet wide sanitary easement, S 26°-53'-33"W, a distance of 113.21 feet to a point at the terminus of this easement.

The sidelines of said easement to be shortened or prolonged to meet at angle point intersections.

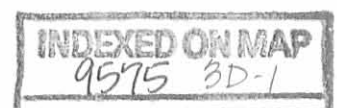
The basis for bearings is the center-line of County Highway 10, between center-line Station 149+55.6 and Station 132+00, being N 84°-22'-55"E, and all other bearings are from angles and distances measured in a field survey by Lee Surveying and Mapping Co., Inc. on January 22, 2009, revised July 24, 2009.



Description prepared by:

William K. Bruce
Professional Surveyor 7437
July 31, 2009

4600079



REC'D 8-3-09 SUM OK

Lee Surveying and Mapping Co., Inc.

Land Surveys • Topography • Subdivisions • Construction Layout

117 N. Madriver St.
Bellefontaine OH 43311



Phone: (937) 593-7335
Fax: (937) 593-7444

BARROWS 12.785 ACRES

Lying in Virginia Military Survey 12563 & 13067, Jefferson Township, Logan County, Ohio.

Being out of the Kathleen K. Barrows 111.7 acre tract as deeded and described in Official Record 144, Page 423 of the Logan County Records of Deeds and being more particularly described as follows:

Commencing on a 1/2 inch iron rod found in a monument box on the center-line of County Highway 10 at center-line Station 132+00 (Logan County Engineer's Field Book 615, Page 15).

THENCE, with the center-line of County Highway 10 (50 feet wide), S 84°-22'-55"W, a distance of 274.63 feet to a MAG nail set at the TRUE POINT OF BEGINNING.

THENCE, with the west line of the Rolling Ridge Co., 28.6 acre tract (Vol. 324, Pg. 716, Tract Two), S 18°-57'-58"E, a distance of 752.85 feet to a 5/8 inch iron rod set, passing a 5/8 inch iron rod set at 30.83 feet.

THENCE, S 82°-54'-21"W, a distance of 383.65 feet to a 5/8 inch iron rod set.

THENCE, N 85°-57'-29"W, a distance of 440.36 feet to a 5/8 inch iron rod set.

THENCE, N 74°-23'-27"W, a distance of 18.24 feet to a 5/8 inch iron rod set.

THENCE, N 48°-09'-47"W, a distance of 27.06 feet to a 5/8 inch iron rod set.

THENCE, N 06°-52'-26"W, a distance of 7.64 feet to a 5/8 inch iron rod set.

THENCE, S 83°-07'-35"W, a distance of 50.00 feet to a 5/8 inch iron rod set.

THENCE, N 06°-52'-25"W, a distance of 75.00 feet to a 5/8 inch iron rod set.

THENCE, N 83°-07'-35"E, a distance of 50.00 feet to a 5/8 inch iron rod set.

THENCE, N 06°-52'-26"W, a distance of 559.48 feet to a MAG nail set on the center-line of County Highway 10, passing a 5/8 inch iron rod set at 531.64 feet.

THENCE, with the center-line of County Highway 10, N 84°-22'-55"E, a distance of 693.20 feet to the point of beginning.

Containing 12.785 acres, of which 0.399 acre is within the highway right-of-way.

The basis for bearings is the center-line of County Highway 10, between center-line Station 149+55.6 and Station 132+00, being N 84°-22'-55"E, and all other bearings are from angles and distances measured in a field survey by Lee Surveying and Mapping Co., Inc. on January 22, 2009, revised July 24, 2009.

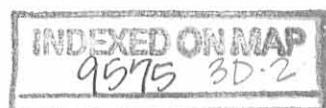


ORIGINAL STAMP IN GREEN

Description prepared by:

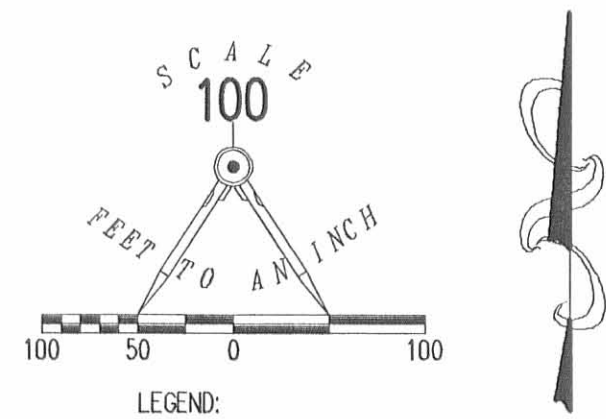
William K. Bruce

William K. Bruce
Professional Surveyor 7437
July 31, 2009



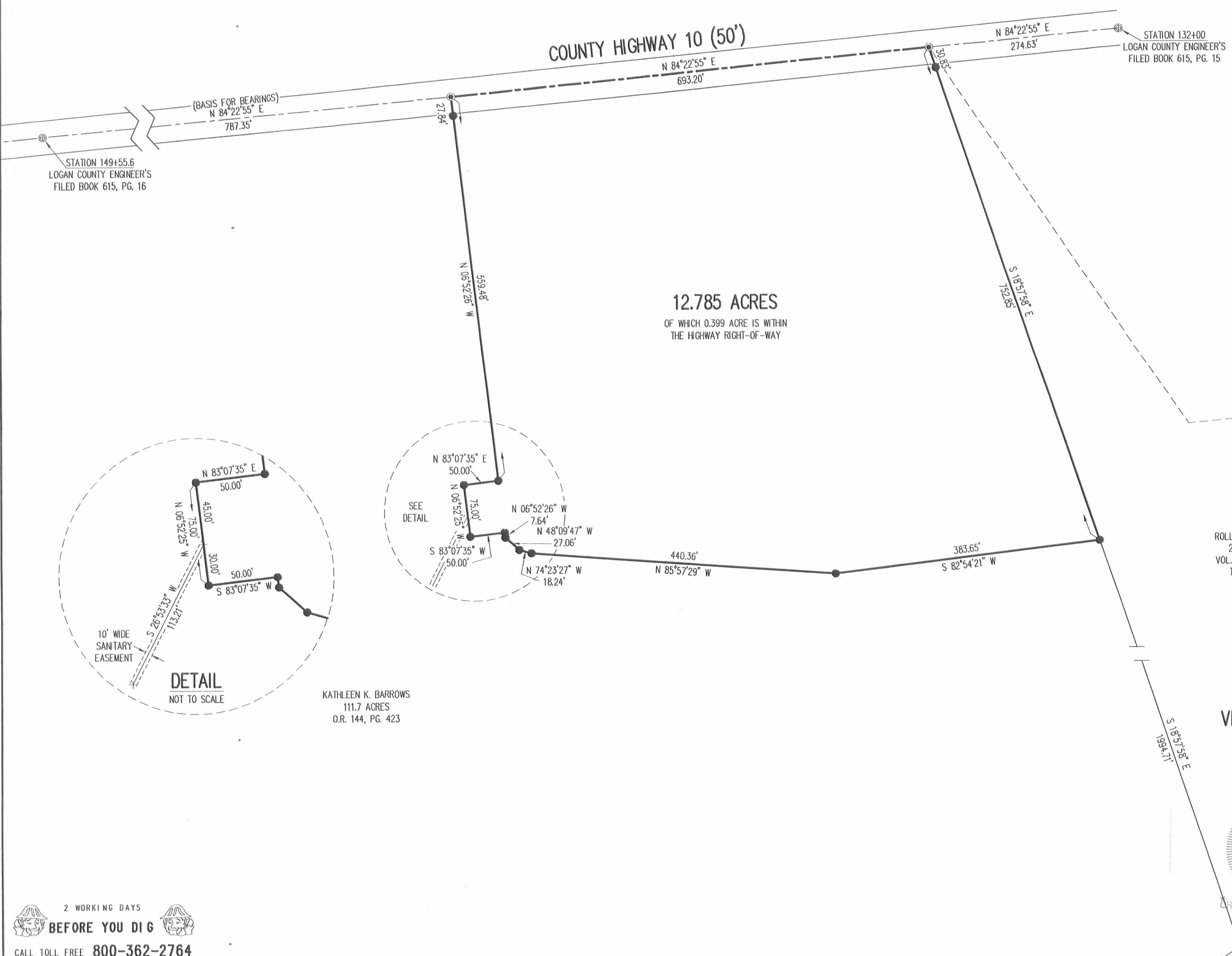
4600079

REV'D 8-3-09 SWY OK



- LEGEND:
- ⊕ 1/2 INCH IRON ROD FOUND IN MONUMENT BOX
 - MAG NAIL SET
 - 5/8 INCH IRON ROD SET
 - ⊗ REMAINS OF ROTTED 8 INCH WOOD POST FOUND AT FENCE INTERSECTION

COUNTY HIGHWAY 10 (50')

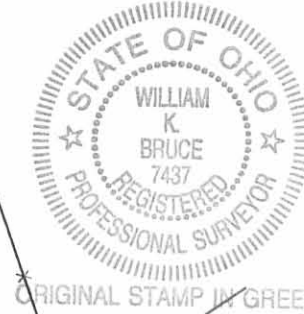


ROLLING RIDGE CO.
160 ACRES
VOL. 324, PG. 716
TRACT ONE

ROLLING RIDGE CO.
28.6 ACRES
VOL. 324, PG. 716
TRACT TWO

**SURVEY OF 12.785 ACRES OUT OF THE
KATHLEEN K. BARROWS
111.7 ACRE TRACT
OFFICIAL RECORD 144, PAGE 423
VIRGINIA MILITARY SURVEY 12563 & 13067
JEFFERSON TOWNSHIP
LOGAN COUNTY, OHIO**

SURVEYED BY:



William K. Bruce
WILLIAM K. BRUCE
PROFESSIONAL SURVEYOR 7437
JANUARY 21, 2009
REVISED JULY 24, 2009

COPYRIGHT 2009 BY:
LEE SURVEYING & MAPPING CO., INC.
117 North Madriver Street
BELLEFONTAINE, OHIO 43311
(937) 593-7335
surveys@lsmcinc.us

KSS D0709 4600079 L-4600-2

2 WORKING DAYS
BEFORE YOU DIG
CALL TOLL FREE **800-362-2764**
OHIO UTILITIES PROTECTION SERVICE

INDEXED ON MAP
9675 2P

REC'D 5-7-12 S.M. & M.

Lee Surveying and Mapping Co., Inc.

Land Surveys • Topography • Subdivisions • Construction Layout

117 N. Madriver St.
Bellefontaine OH 43311



Phone: (937) 593-7335
Fax: (937) 593-7444

BARROWS 6.260 ACRES

Lying in Virginia Military Survey 12563 & 13067, Jefferson Township, Logan County, Ohio.

Being out of the Kathleen K. Barrows 111.7 acre tract as deeded and described in Official Record 144, Page 423 of the Logan County Records of Deeds and being more particularly described as follows:

Commencing on a 1/2 inch iron rod found in a monument box on the center-line of County Highway 10 at center-line Station 158+50 (Logan County Engineer's Field Book 615, Page 17).

THENCE, with the center-line of County Highway 10 (60 feet wide), N 85°-27'-43"E, a distance of 716.75 feet to a railroad spike found at the TRUE POINT OF BEGINNING.

THENCE, with the center-line of County Highway 10, the following two courses:

N 85°-27'-43"E, a distance of 177.70 feet to a 1/2 inch iron rod found in a monument box at center-line Station 149+55.6 (Logan County Engineer's Field Book 615, Page 16).

N 84°-22'-55"E, a distance of 122.35 feet to a MAG nail set.

THENCE, S 5°-53'-02"E, a distance of 1171.57 feet to a point referenced by a 5/8 inch iron rod set, bearing N 03°-54'-11"W a distance of 87.43 feet, passing a 5/8 inch iron rod set at 30.00 feet.

THENCE, with the easterly lines of The Miami Presbytery original 68 3/4 acre tract (Vol. 389, Pg. 853), the following two courses:

N 36°-55'-02"W, a distance of 515.42 feet to a 5/8 inch iron rod set.

N 12°-02'-02"W, a distance of 320.00 feet to a 5/8 inch iron rod found.

THENCE, with the easterly lines of the said original 68 3/4 acre tract and the Ed DeLair 1.205 acre tract (O.R. 486, Pg. 354), N 5°-53'-01"W, a distance of 416.50 feet to the point of beginning, passing a 5/8 inch iron rod found at 391.49 feet.

Containing 6.260 acres, of which 0.207 acre is within the highway right-of-way.

The basis for bearings is the center-line of County Highway 10 between center-line Station 158+50 and center-line Station 149+55.6, being N 85°-27'-43"E, and all other bearings are from angles and distances measured in a field survey by Lee Surveying and Mapping Co., Inc. on March 10, 2008 and May 5, 2008.

Description prepared by:

William K. Bruce
Professional Surveyor 7437
May 3, 2012



ORIGINAL STAMP IN GREEN

46000412



Lee Surveying and Mapping Co., Inc.

Land Surveys • Topography • Subdivisions • Construction Layout

117 N. Madriver St.
Bellefontaine OH 43311



Phone: (937)593-7335
Fax: (937) 593-7444

PROFESSIONAL SURVEYOR'S AFFIDAVIT

William K. Bruce, being first duly sworn, deposes and says that he is a Registered Professional Surveyor under the laws of the State of Ohio, being Professional Surveyor No. 7437 and that he is making this affidavit for the purposes of correcting the description to certain real estate situated in Jefferson Township, Logan County, Ohio, presently owned by Jeff Bruns and Mark Bruns by virtue of a General Warranty Deed recorded in Official Record Volume 961, Page 536 of the Logan County Records of Deeds.

The corrected description being as follows with corrections underlined:

EXHIBIT "A"

Lying in Virginia Military Survey 12563 & 13067, Jefferson Township, Logan County, Ohio.

Being out of the Kathleen K. Barrows 111.7 acre tract as deeded and described in Official Record 144, Page 423 of the Logan County Records of Deeds and being more particularly described as follows:

Commencing on a 1/2 inch iron rod found in a monument box on the center-line of County Highway 10 at center-line Station 158+50 (Logan County Engineer's Field Book 615, Page 17).

THENCE, with the center-line of County Highway 10 (60 feet wide), N 85°-27'-43"E, a distance of 716.75 feet to a railroad spike found.

THENCE, with the center-line of County Highway 10, the following two courses:

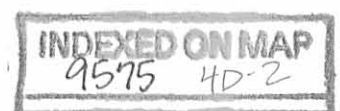
N 85°-27'-43"E, a distance of 177.70 feet to a 1/2 inch iron rod found in a monument box at center-line Station 149+55.6 (Logan County Engineer's Field Book 615, Page 16).

N 84°-22'-55"E, a distance of 122.35 feet to a MAG nail set at THE TRUE POINT OF BEGINNING.

THENCE, with the center-line of County Highway 10, N 84°-22'-55"E, a distance of 150.00 feet to a MAG nail set.

THENCE, S 5°-53'-02"E, a distance of 614.21 feet to a 5/8 inch iron rod set, passing a 5/8 inch iron rod set at 30.00 feet.

MEMBER: AMERICAN CONGRESS ON SURVEYING & MAPPING (ACSM) • NATIONAL SOCIETY OF PROFESSIONAL SURVEYORS (NSPS) PROFESSIONAL LAND SURVEYORS OF OHIO (PLSO)



Lee Surveying and Mapping Co., Inc.

Land Surveys • Topography • Subdivisions • Construction Layout

117 N. Madriver St.
Bellefontaine OH 43311



Phone: (937)593-7335
Fax: (937) 593-7444

THENCE, N 79°-36'-08"E, a distance of 394.53 feet to a 5/8 inch iron rod set.

THENCE, S 5°-22'-51"E, a distance of 701.93 feet to a 5/8 inch iron rod set.

THENCE, S 76°-35'-36"W, a distance of 437.74 feet to a point, passing a 5/8 inch iron rod set at 349.52 feet.

THENCE, with the easterly line of The Miami Presbytery original 68 ¾ acre tract (Vol. 389, Pg. 853), N 36°-55'-02"W, a distance of 200.14 feet to a point, referenced by a 5/8 inch iron rod set bearing N 03°-54'-11"W, a distance of 87.43 feet.

THENCE, N 5°-53'-02"W, a distance of 1171.57 feet to the point of beginning, passing a 5/8 inch iron rod at 1141.57 feet.

Containing 10.792 acres, of which 0.103 acre is within the highway right-of-way.

The basis for bearings is the center-line of County Highway 10 between center-line Station 158+50 and center-line Station 149+55.6, being N 85°-27'-43"E, and all other bearings are from angles and distances measured in a field survey by Lee Surveying and Mapping Co., Inc. on March 10, 2008 and May 5, 2008.

Parcel No. 12-110-00-00-029.001

This description prepared by William K. Bruce, Professional Surveyor No. 7437 on May 6, 2008.

DESCRIPTION CHECKED
LOGAN CO. ENGINEER

WMB 5-8-12

Lee Surveying and Mapping Co., Inc.

Land Surveys • Topography • Subdivisions • Construction Layout

117 N. Madriver St.
Bellefontaine OH 43311

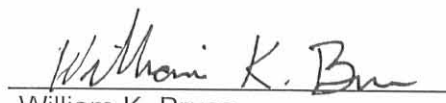


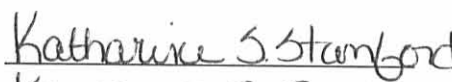
Phone: (937)593-7335
Fax: (937) 593-7444

This affidavit is made in compliance with Revised Code of Ohio Sec. 5301.252 and particularly to show an affidavit of a professional surveyor to reconcile conflicts and ambiguities in descriptions of land in recorded instruments as stated in paragraph B(5) of Section 5301.252. Under Sec. 5301.252(C) the County Recorder shall receive and cause such affidavit to be recorded as deeds are recorded.

SIGNED AND ACKNOWLEDGED IN THE PRESENCE OF:


ROBERT POLING


William K. Bruce
Professional Surveyor No. 7437


KATHARINE S. STANFORD

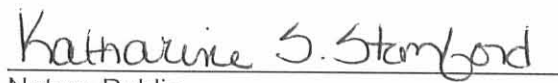
STATE OF OHIO,
LOGAN COUNTY, SS:

BE IT REMEMBERED, that on this 3RD day of MAY, 2012, before me, the subscriber, a Notary Public in and for said County and State, personally came the above named William K. Bruce the maker of the foregoing Affidavit, and acknowledged the signing of the same to be his voluntary act and deed, for the uses and purposes therein mentioned.

IN TESTIMONY WHEREOF, I have hereunto subscribed my name and affixed my official seal, on the day and year last aforesaid.



KATHARINE S. STANFORD
NOTARY PUBLIC
STATE OF OHIO
Comm. Expires
June 06, 2015

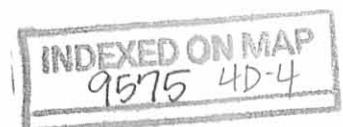

Notary Public,

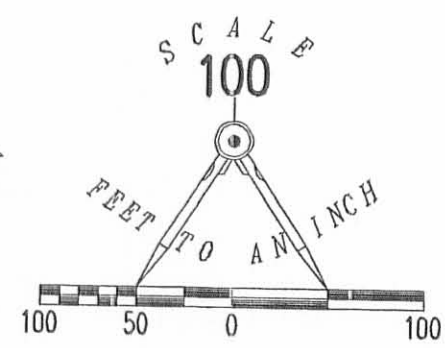
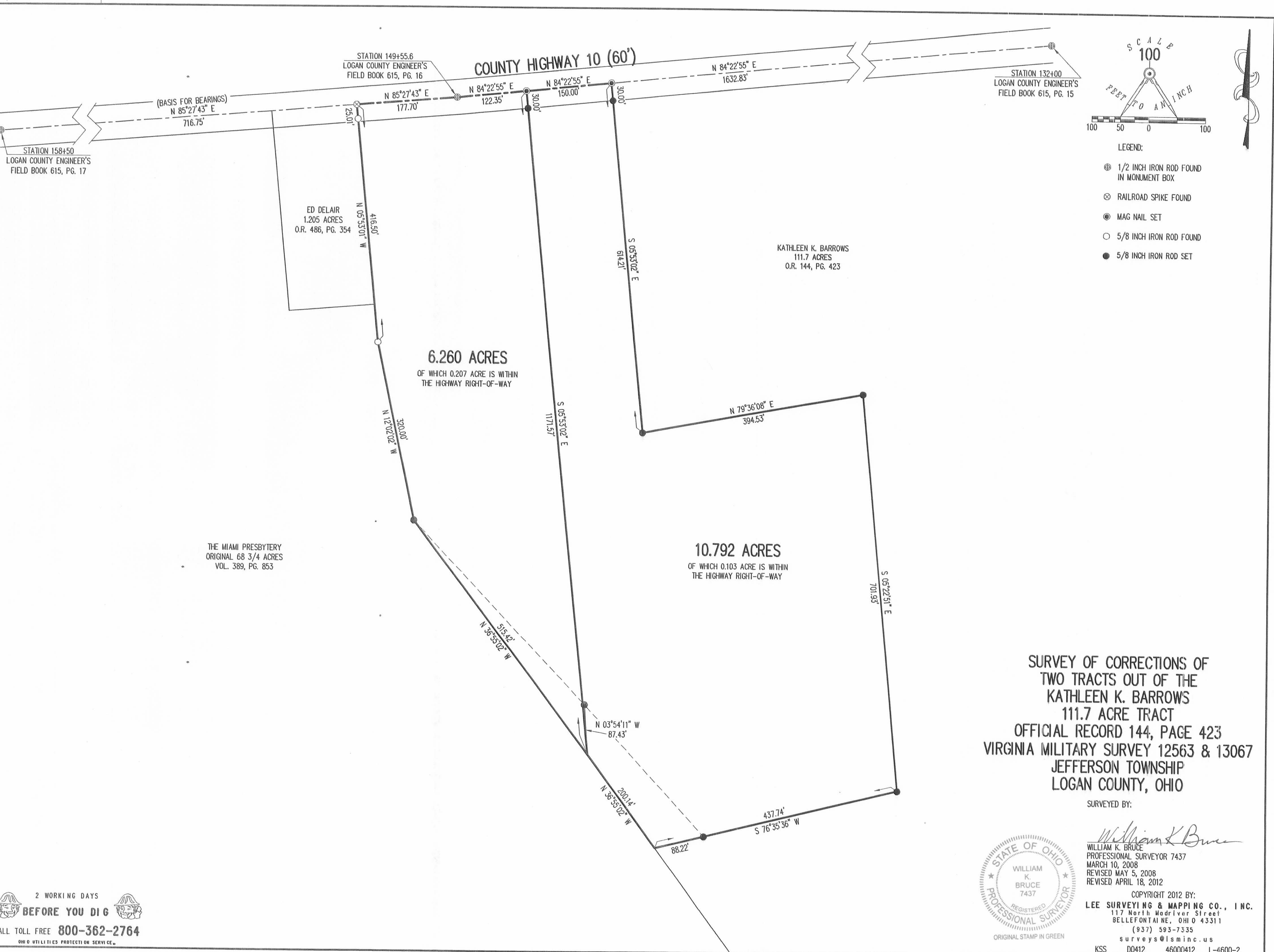
RECORDER:

Please cross reference to Official Record Volume 961, Page 536 in the Abstract of the Deed Records of Logan County, Ohio.

This instrument was prepared by William K. Bruce.

46000412.aff





- LEGEND:
- ⊕ 1/2 INCH IRON ROD FOUND IN MONUMENT BOX
 - ⊗ RAILROAD SPIKE FOUND
 - ⊙ MAG NAIL SET
 - 5/8 INCH IRON ROD FOUND
 - 5/8 INCH IRON ROD SET

SURVEY OF CORRECTIONS OF
 TWO TRACTS OUT OF THE
 KATHLEEN K. BARROWS
 111.7 ACRE TRACT
 OFFICIAL RECORD 144, PAGE 423
 VIRGINIA MILITARY SURVEY 12563 & 13067
 JEFFERSON TOWNSHIP
 LOGAN COUNTY, OHIO

SURVEYED BY:
William K. Bruce
 WILLIAM K. BRUCE
 PROFESSIONAL SURVEYOR 7437
 MARCH 10, 2008
 REVISED MAY 5, 2008
 REVISED APRIL 18, 2012



COPYRIGHT 2012 BY:
 LEE SURVEYING & MAPPING CO., INC.
 117 North Madriver Street
 BELLEFONTAINE, OHIO 43311
 (937) 593-7335
 surveys@lisminc.us
 KSS D0412 46000412 L-4600-2

2 WORKING DAYS
BEFORE YOU DIG
 CALL TOLL FREE 800-362-2764
 OHIO UTILITIES PROTECTION SERVICE

INDEXED ON MAP
 9575 4P

DESCRIPTION CHECKED
LOGAN CO. ENGINEER
BY SMY 5-8-12

Lee Surveying and Mapping Co., Inc.

Land Surveys • Topography • Subdivisions • Construction Layout

117 N. Madriver St.
Bellefontaine OH 43311



Phone: (937)593-7335
Fax: (937) 593-7444

William K. Bruce, being first duly sworn, deposes and says that he is a Registered Professional Surveyor under the laws of the State of Ohio, being Professional Surveyor No. 7437 and that he is making this affidavit for the purposes of correcting the description to certain real estate situated in Jefferson Township, Logan County, Ohio, presently owned by Jeff Bruns and Mark Bruns by virtue of a General Warranty Deed recorded in Official Record Volume 961, Page 539 of the Logan County Records of Deeds.

The corrected description being as follows with corrections underlined:

EXHIBIT "A"

Situated in the Township of Jefferson, in the County of Logan, and State of Ohio, in V.M.S. No. 13,067 and beginning at an iron stake in the center of the road leading from East Liberty to Zanesfield, northeast (see DB 106/613) corner to school house lot formerly corner to James Brown tract; thence N. 84 deg. E. 100.5 poles with the line of said road to a stake from which a white oak 2 1/2 feet in diameter bears south 3/4 deg. W. 54 links distant; thence S. 18 deg. E. 168.2 poles with the W. line of J.F. Reams' land to a stake in a branch and in the N. line of Kate Outland's land; thence S. 57 1/2 deg. W. 78.88 poles with the S. line of said Survey No. 13067, passing said Kate Outland's N.W. corner at 13.38 poles to a stone and broken crocks placed to designate N.E. corner of Surveys Nos. 10426, 10427 and 11041; thence S. 85 deg. W. 35.2 poles to a small red oak in a branch with steep banks and also in survey line; thence up said branch with the various meanderings N. 4 3/4 deg. E. 19 poles to a stake; thence N. 17 1/4 deg. E 13.4 poles to a point; thence N. 78 1/4 deg. E. 4.88 poles; thence N. 24 1/2 deg. E. 16.8 poles; thence N. 45 1/4 deg. W. 16.4 poles; thence N. 6 deg. W. 20 3/4 poles; thence N. 40 deg. W. 14 poles; thence N. 6 1/4 deg. W. 14 poles; thence N. 38 deg. W. 60 poles to a swamp elm 18 inches in diameter; thence N. 11 3/4 deg. W. 19.4 poles to a stone; thence N. 5 3/4 deg. W. 25 poles to the beginning, containing 111.7 acres, more or less.

EXCEPTING THEREFROM THE FOLLOWING DESCRIBED REAL ESTATE:

Lying in Virginia Military Survey 12563 & 13067, Jefferson Township, Logan County, Ohio.

Being out of the Kathleen K. Barrows 111.7 acre tract as deeded and described in Official Record 144, Page 423 of the Logan County Records of Deeds and being more particularly described as follows:

Commencing on a 1/2 inch iron rod found in a monument box on the center-line of County Highway 10 at center-line Station 158+50 (Logan County Engineer's Field Book 615, Page 17).

Lee Surveying and Mapping Co., Inc.

Land Surveys • Topography • Subdivisions • Construction Layout

117 N. Madriver St.
Bellefontaine OH 43311



Phone: (937)593-7335
Fax: (937) 593-7444

THENCE, with the center-line of County Highway 10 (60 feet wide), N 85°-27'-43"E, a distance of 716.75 feet to a railroad spike found.

THENCE, with the center-line of County Highway 10, the following two courses:

N 85°-27'-43"E, a distance of 177.70 feet to a 1/2 inch iron rod found in a monument box at center-line Station 149+55.6 (Logan County Engineer's Field Book 615, Page 16).

N 84°-22'-55"E, a distance of 122.35 feet to a MAG nail set at THE TRUE POINT OF BEGINNING.

THENCE, with the center-line of County Highway 10, N 84°-22'-55"E, a distance of 150.00 feet to a MAG nail set.

THENCE, S 5°-53'-02"E, a distance of 614.21 feet to a 5/8 inch iron rod set, passing a 5/8 inch iron rod set at 30.00 feet.

THENCE, N 79°-36'-08"E, a distance of 394.53 feet to a 5/8 inch iron rod set.

THENCE, S 5°-22'-51"E, a distance of 701.93 feet to a 5/8 inch iron rod set.

THENCE, S 76°-35'-36"W, a distance of 437.74 feet to a point, passing a 5/8 inch iron rod set at 349.52 feet.

THENCE, with the easterly line of The Miami Presbytery original 68 3/4 acre tract (Vol. 389, Pg. 853), N 36°-55'-02"W, a distance of 200.14 feet to a point, referenced by a 5/8 inch iron rod set bearing N 03°-54'-11"W, a distance of 87.43 feet.

THENCE, N 5°-53'-02"W, a distance of 1171.57 feet to the point of beginning, passing a 5/8 inch iron rod at 1141.57 feet.

Containing 10.792 acres, of which 0.103 acre is within the highway right-of-way.

The basis for bearings is the center-line of County Highway 10 between center-line Station 158+50 and center-line Station 149+55.6, being N 85°-27'-43"E, and all other bearings are from angles and distances measured in a field survey by Lee Surveying and Mapping Co., Inc. on March 10, 2008 and May 5, 2008.

This description prepared by William K. Bruce, Professional Surveyor No. 7437 on May 6, 2008.

FURTHER EXCEPTING THEREFROM THE FOLLOWING DESCRIBED REAL ESTATE:

Lee Surveying and Mapping Co., Inc.

Land Surveys • Topography • Subdivisions • Construction Layout

117 N. Madriver St.
Bellefontaine OH 43311



Phone: (937)593-7335
Fax: (937) 593-7444

Lying in Virginia Military Survey 12563 & 13067, Jefferson Township, Logan County, Ohio.

Being out of the Kathleen K. Barrows 111.7 acre tract as deeded and described in Official Record 144, Page 423 of the Logan County Records of Deeds and being more particularly described as follows:

Commencing on a 1/2 inch iron rod found in a monument box on the center-line of County Highway 10 at center-line Station 132+00 (Logan County Engineer's Field Book 615, Page 15).

THENCE, with the center-line of County Highway 10 (50 feet wide), S 84°-22'-55"W, a distance of 274.63 feet to a MAG nail set at the TRUE POINT OF BEGINNING.

THENCE, with the west line of the Rolling Ridge Co., 28.6 acre tract (Vol. 324, Pg. 716, Tract Two), S 18°-57'-58"E, a distance of 752.85 feet to a 5/8 inch iron rod set, passing a 5/8 inch iron rod set at 30.83 feet.

THENCE, S 82°-54'-21"W, a distance of 383.65 feet to a 5/8 inch iron rod set.

THENCE, N 85°-57'-29"W, a distance of 440.36 feet to a 5/8 inch iron rod set.

THENCE, N 74°-23'-27"W, a distance of 18.24 feet to a 5/8 inch iron rod set.

THENCE, N 48°-09'-47"W, a distance of 27.06 feet to a 5/8 inch iron rod set.

THENCE, N 06°-52'-26"W, a distance of 7.64 feet to a 5/8 inch iron rod set.

THENCE, S 83°-07'-35"W, a distance of 50.00 feet to a 5/8 inch iron rod set.

THENCE, N 06°-52'-25"W, a distance of 75.00 feet to a 5/8 inch iron rod set.

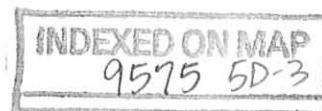
THENCE, N 83°-07'-35"E, a distance of 50.00 feet to a 5/8 inch iron rod set.

THENCE, N 06°-52'-26"W, a distance of 559.48 feet to a MAG nail set on the center-line of County Highway 10, passing a 5/8 inch iron rod set at 531.64 feet.

THENCE, with the center-line of County Highway 10, N 84°-22'-55"E, a distance of 693.20 feet to the point of beginning.

Containing 12.785 acres, of which 0.399 acre is within the highway right-of-way.

The basis for bearings is the center-line of County Highway 10, between center-line Station 149+55.6 and Station 132+00, being N 84°-22'-55"E, and all other bearings are from angles and distances measured in a field survey



Lee Surveying and Mapping Co., Inc.

Land Surveys • Topography • Subdivisions • Construction Layout

117 N. Madriver St.
Bellefontaine OH 43311



Phone: (937)593-7335
Fax: (937) 593-7444

by Lee Surveying and Mapping Co., Inc. on January 22, 2009, revised July 24, 2009.

This description prepared by William K. Bruce, Professional Surveyor 7437 on July 31, 2009.

FURTHER EXCEPTING THEREFROM THE FOLLOWING DESCRIBED REAL ESTATE:

Lying in Virginia Military Survey 12563 & 13067, Jefferson Township, Logan County, Ohio.

Being out of the Kathleen K. Barrows 111.7 acre tract as deeded and described in Official Record 144, Page 423 of the Logan County Records of Deeds and being more particularly described as follows:

Commencing on a 1/2 inch iron rod found in a monument box on the center-line of County Highway 10 at center-line Station 158+50 (Logan County Engineer's Field Book 615, Page 17).

THENCE, with the center-line of County Highway 10 (60 feet wide), N 85°-27'-43"E, a distance of 716.75 feet to a railroad spike found at the TRUE POINT OF BEGINNING.

THENCE, with the center-line of County Highway 10, the following two courses:

N 85°-27'-43"E, a distance of 177.70 feet to a 1/2 inch iron rod found in a monument box at center-line Station 149+55.6 (Logan County Engineer's Field Book 615, Page 16).

N 84°-22'-55"E, a distance of 122.35 feet to a MAG nail set.

THENCE, S 5°-53'-02"E, a distance of 1171.57 feet to a point referenced by a 5/8 inch iron rod set, bearing N 03°-54'-11"W a distance of 87.43 feet, passing a 5/8 inch iron rod set at 30.00 feet.

THENCE, with the easterly lines of The Miami Presbytery original 68 3/4 acre tract (Vol. 389, Pg. 853), the following two courses:

N 36°-55'-02"W, a distance of 515.42 feet to a 5/8 inch iron rod set.

N 12°-02'-02"W, a distance of 320.00 feet to a 5/8 inch iron rod found.

THENCE, with the easterly lines of the said original 68 3/4 acre tract and the Ed DeLair 1.205 acre tract (O.R. 486, Pg. 354), N 5°-53'-01"W, a distance of 416.50 feet to the point of beginning, passing a 5/8 inch iron rod found at 391.49 feet.

Containing 6.260 acres, of which 0.207 acre is within the highway right-of-way.

Lee Surveying and Mapping Co., Inc.

Land Surveys • Topography • Subdivisions • Construction Layout

117 N. Madriver St.
Bellefontaine OH 43311



Phone: (937)593-7335
Fax: (937) 593-7444

The basis for bearings is the center-line of County Highway 10 between center-line Station 158+50 and center-line Station 149+55.6, being N 85°-27'-43"E, and all other bearings are from angles and distances measured in a field survey by Lee Surveying and Mapping Co., Inc. on March 10, 2008 and May 5, 2008.

This description prepared by William K. Bruce, Professional Surveyor 7437 on May 6, 2008.

Containing 81.863 acres after said exceptions. PARCEL # 12-110-00-00-029.002

RESERVING, HOWEVER, UNTO THE GRANTO HEREIN, THE FOLLOWING DESCRIBED 10.00 FEET WIDE SANITARY SEWER EASEMENT:

Lying in Virginia Military Survey 12563 & 13067, Jefferson Township, Logan County, Ohio.

Being a 10.00 feet wide sanitary easement over a portion of the Kathleen K. Barrows 111.7 acre tract as deeded and described in Official Record 144, Page 423 of the Logan County Records of Deeds and being more particularly described as follows:

Commencing on a 1/2 inch iron rod found in a monument box on the center-line of County Highway 10 at center-line Station 149+55.6 (Logan County Engineer's Field Book 615, Page 16).

THENCE, with the center-line of County Highway 10 (50 feet wide), N 84°-22'-55"E, a distance of 787.35 feet to a MAG nail set.

THENCE, S 06°-52'-26"E, a distance of 559.48 feet to a 5/8 inch iron rod set, passing a 5/8 inch iron rod set at 27.84 feet.

THENCE, S 83°-07'-35"W, a distance of 50.00 feet to a 5/8 inch iron rod set.

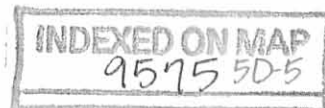
THENCE, S 06°-52'-25"E, a distance of 45.00 feet to a point at the TRUE POINT OF BEGINNING.

THENCE, with the center-line of the 10.00 feet wide sanitary easement, S 26°-53'-33"W, a distance of 113.21 feet to a point at the terminus of this easement.

The sidelines of said easement to be shortened or prolonged to meet at angle point intersections.

The basis for bearings is the center-line of County Highway 10, between center-line Station 149+55.6 and Station 132+00, being N 84°-22'-55"E, and all other bearings are from angles and distances measured in a field survey by Lee Surveying and Mapping Co., Inc. on January 22, 2009, revised July 24, 2009.

This description prepared by William K. Bruce, Professional Surveyor 7437 on July 31, 2009.



Lee Surveying and Mapping Co., Inc.

Land Surveys • Topography • Subdivisions • Construction Layout

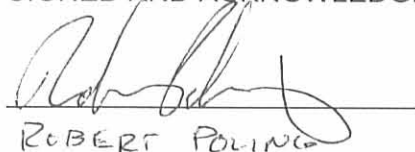
117 N. Madriver St.
Bellefontaine OH 43311

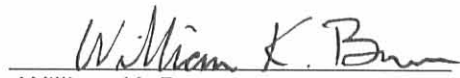


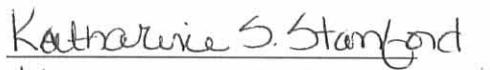
Phone: (937)593-7335
Fax: (937) 593-7444

This affidavit is made in compliance with Revised Code of Ohio Sec. 5301.252 and particularly to show an affidavit of a professional surveyor to reconcile conflicts and ambiguities in descriptions of land in recorded instruments as stated in paragraph B(5) of Section 5301.252. Under Sec. 5301.252(C) the County Recorder shall receive and cause such affidavit to be recorded as deeds are recorded.

SIGNED AND ACKNOWLEDGED IN THE PRESENCE OF:


ROBERT POLING


William K. Bruce
Professional Surveyor No. 7437


KATHARINE S. STANFORD

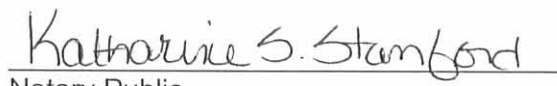
STATE OF OHIO,
LOGAN COUNTY, SS:

BE IT REMEMBERED, that on this 3RD day of MAY, 2012, before me, the subscriber, a Notary Public in and for said County and State, personally came the above named William K. Bruce the maker of the foregoing Affidavit, and acknowledged the signing of the same to be his voluntary act and deed, for the uses and purposes therein mentioned.

IN TESTIMONY WHEREOF, I have hereunto subscribed my name and affixed my official seal, on the day and year last aforesaid.



KATHARINE S. STANFORD
NOTARY PUBLIC
STATE OF OHIO
Comm. Expires
June 06, 2015


Notary Public,

RECORDER:

Please cross reference to Official Record Volume 961, Page 539 in the Abstract of the Deed Records of Logan County, Ohio.

This instrument was prepared by William K. Bruce.

46000412.aff

